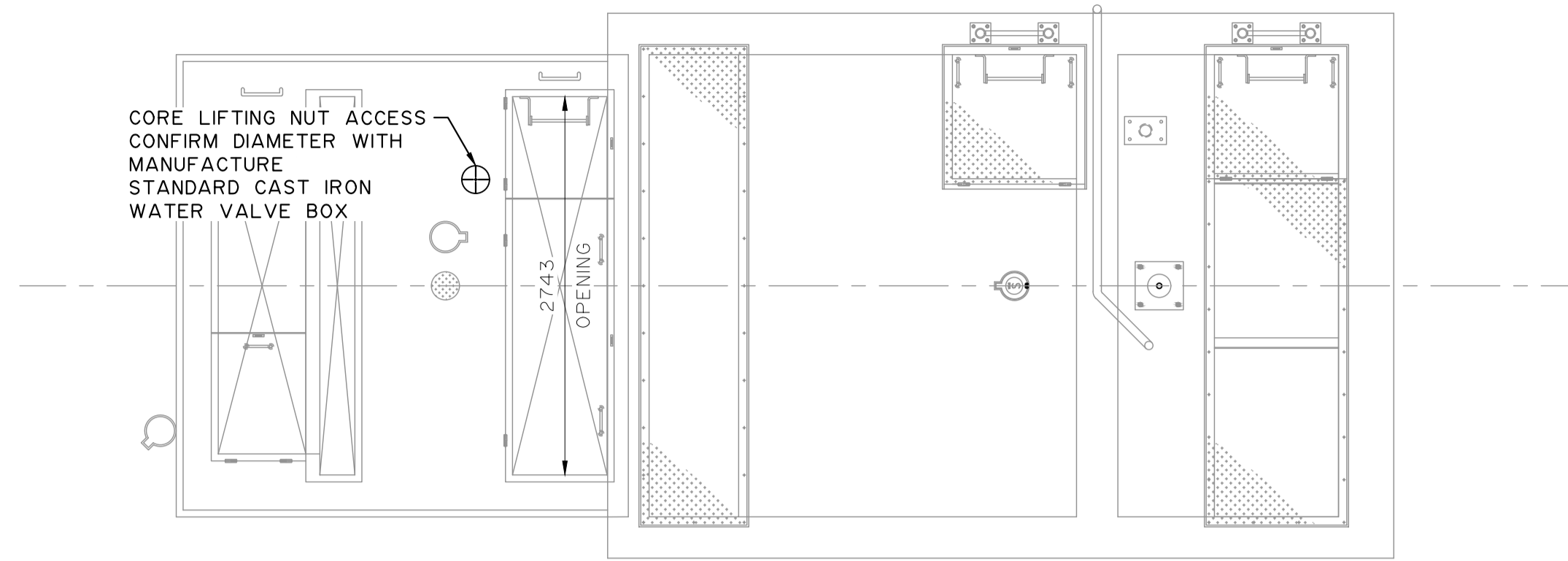
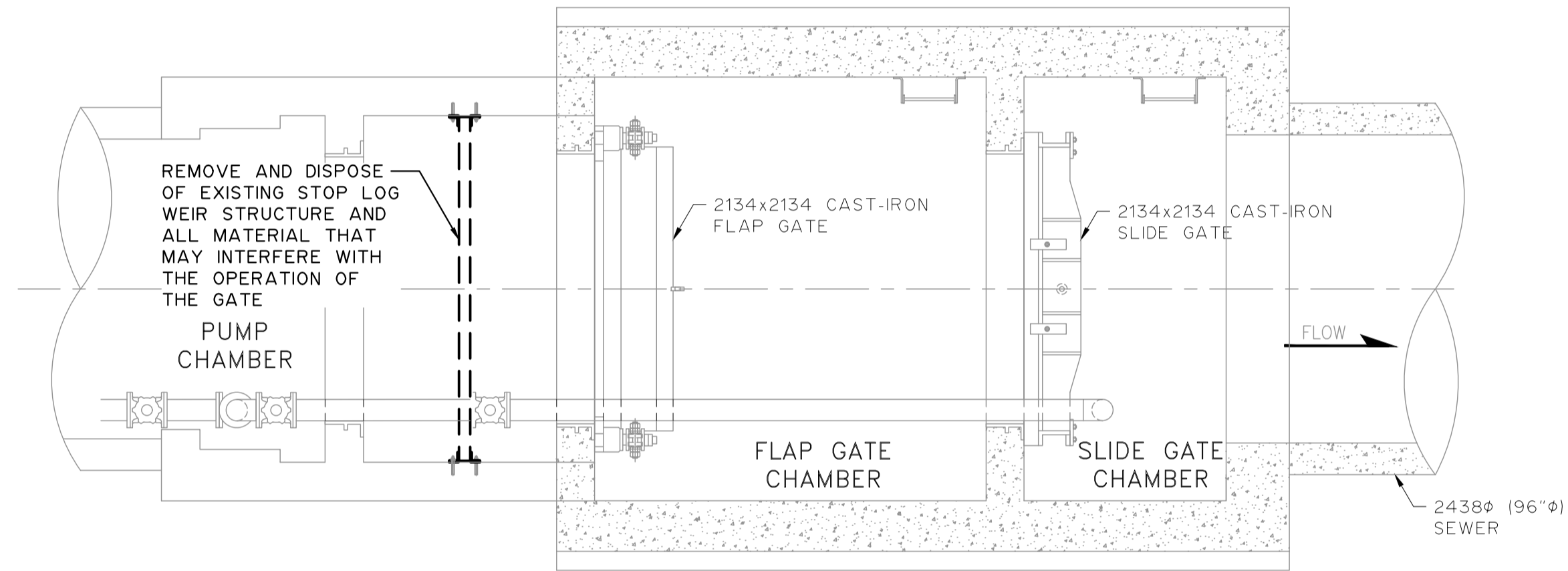


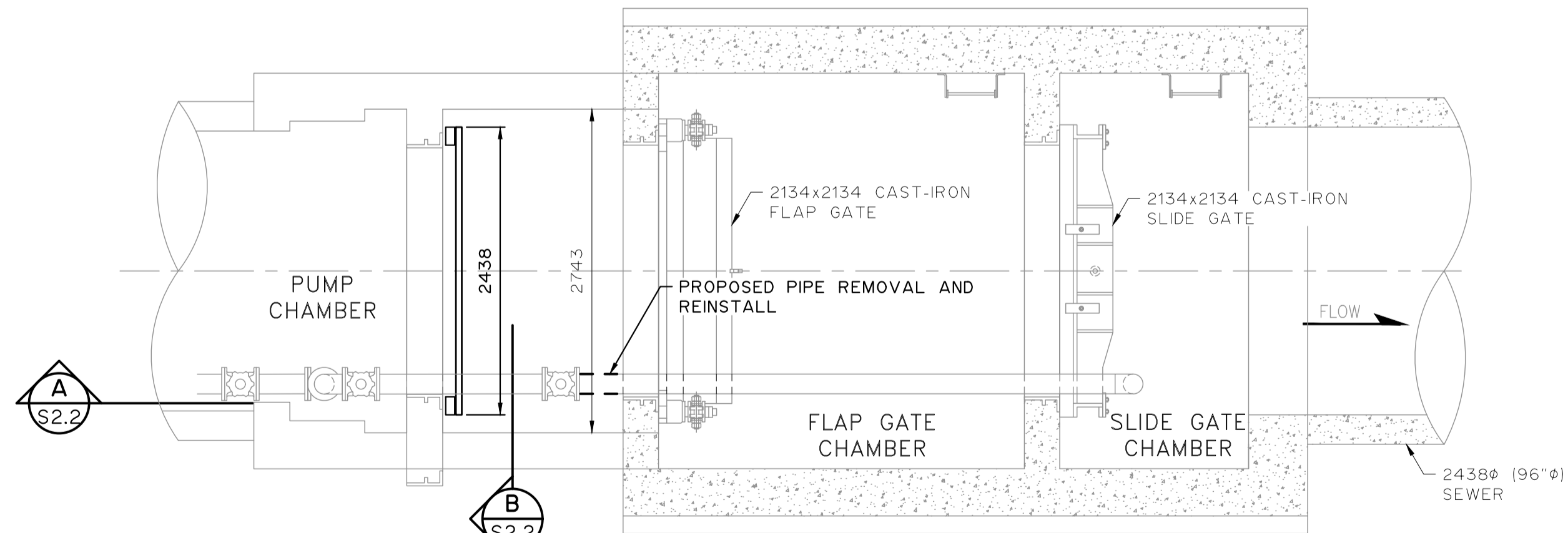
SITE PLAN
1:250



CHAMBER PLAN
1:40

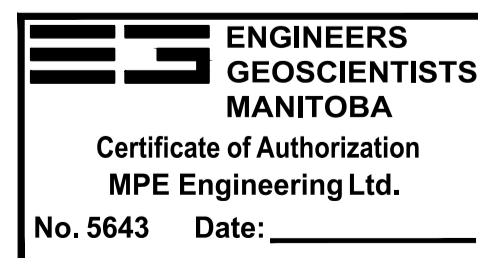


CHAMBER DEMOLITION FLOOR PLAN
1:40



CHAMBER FLOOR PLAN
1:40

- NOTES:
1. ALL DIMENSIONS IN mm UNLESS NOTED OTHERWISE. ALL ELEVATIONS IN m UNLESS NOTED OTHERWISE.
 2. FIELD VERIFY ALL DIMENSIONS. NOTE ANY DISCREPANCIES WITH ENGINEER PRIOR TO CONSTRUCTION.
 3. ALL SURFACE RESTORATION WORKS TO BE CONSTRUCTED WITH THE LATEST VERSION OF THE CITY OF WINNIPEG STANDARD CONSTRUCTION SPECIFICATIONS.
 4. CONTRACTOR RESPONSIBLE FOR ALL DEWATERING AND BYPASS PUMPING TO COMPLETE THE WORK.
 5. RESTORE GRASS AREAS WITH 150 TOPSOIL AND SOD.



LOCATION APPROVED
UNDERGROUND STRUCTURES

SUPV. U/G STRUCTURES COMMITTEE DATE

NOTE:
LOCATION OF UNDERGROUND STRUCTURES AS SHOWN ARE BASED ON THE BEST INFORMATION AVAILABLE. BUT NO GUARANTEE IS GIVEN THAT ALL EXISTING UTILITIES ARE SHOWN OR THAT THE GIVEN LOCATIONS ARE EXACT. CONFIRMATION OF EXISTENCE AND EXACT LOCATION OF ALL SERVICES MUST BE OBTAINED FROM THE INDIVIDUAL UTILITIES BEFORE PROCEEDING WITH CONSTRUCTION.

B.M. ELEV.	NO.	FOR TENDER	DATE	BY
	1	FOR TENDER	2021 11 16	M.J.B.
		REVISIONS	DATE	BY

MPE Engineering Ltd.

DESIGNED BY M.B. (204)334-3621
CHECKED BY P.N.B.

DRAWN BY C.W.H.
APPROVED BY XX

SCALE: HORIZONTAL AS SHOWN
VERTICAL

DATE 2021 11 16
DATE

ENGINEER'S SEAL

PROVINCE OF MANITOBA REGISTERED PROFESSIONAL ENGINEER

M.J. BAKER
Member 43540

CONSULTANT DRAWING NUMBER S2.1

THE CITY OF WINNIPEG
WATER AND WASTE DEPARTMENT
ENGINEERING DIVISION

McDERMOT AND FORT ROUGE SRS WEIR GATE UPGRADES

FORT ROUGE SRS OUTFALL CHAMBER
SITE AND CHAMBER PLANS

CITY DRAWING NUMBER 1-0204G-S0001-001 SHEET 4 OF 5