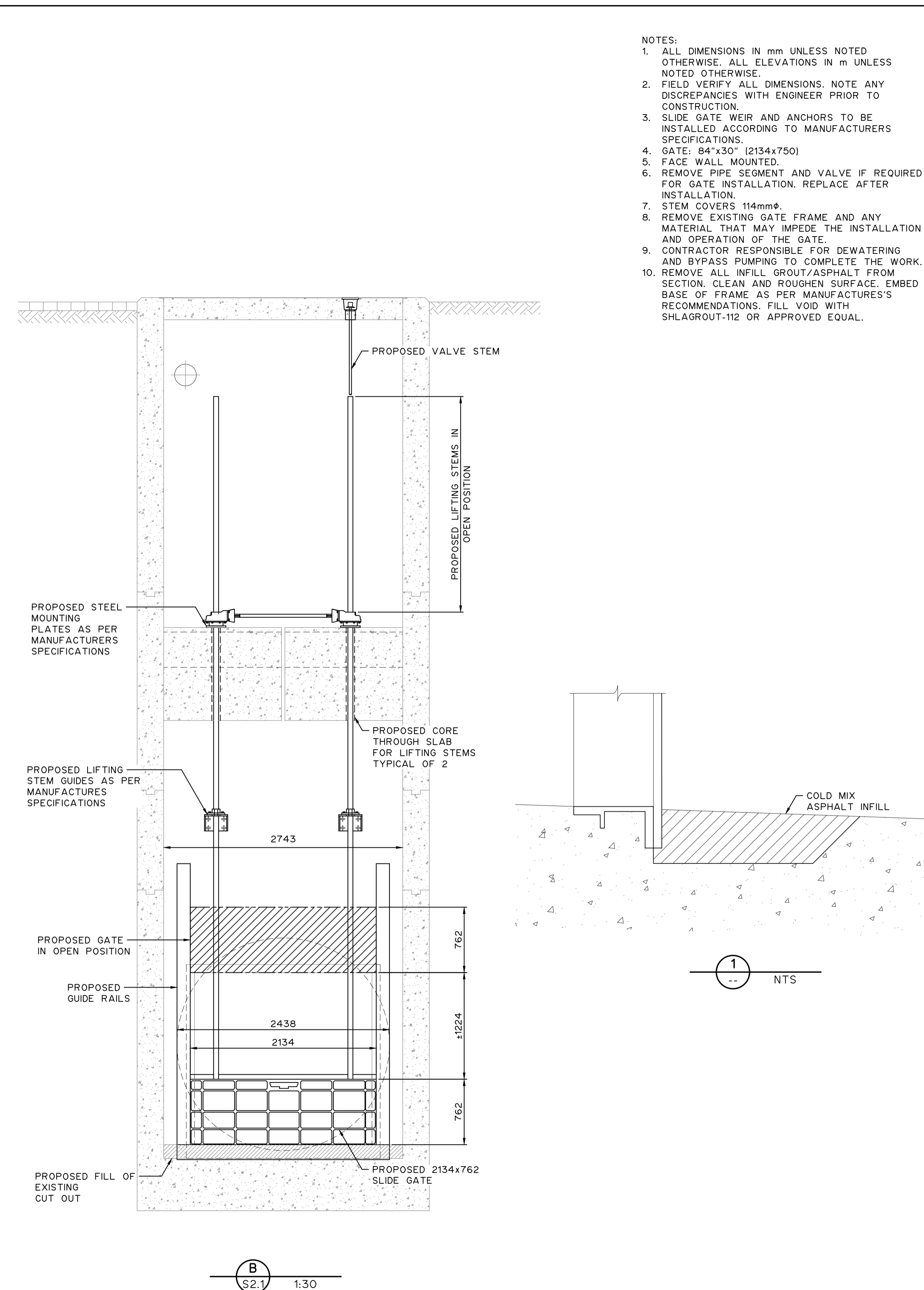
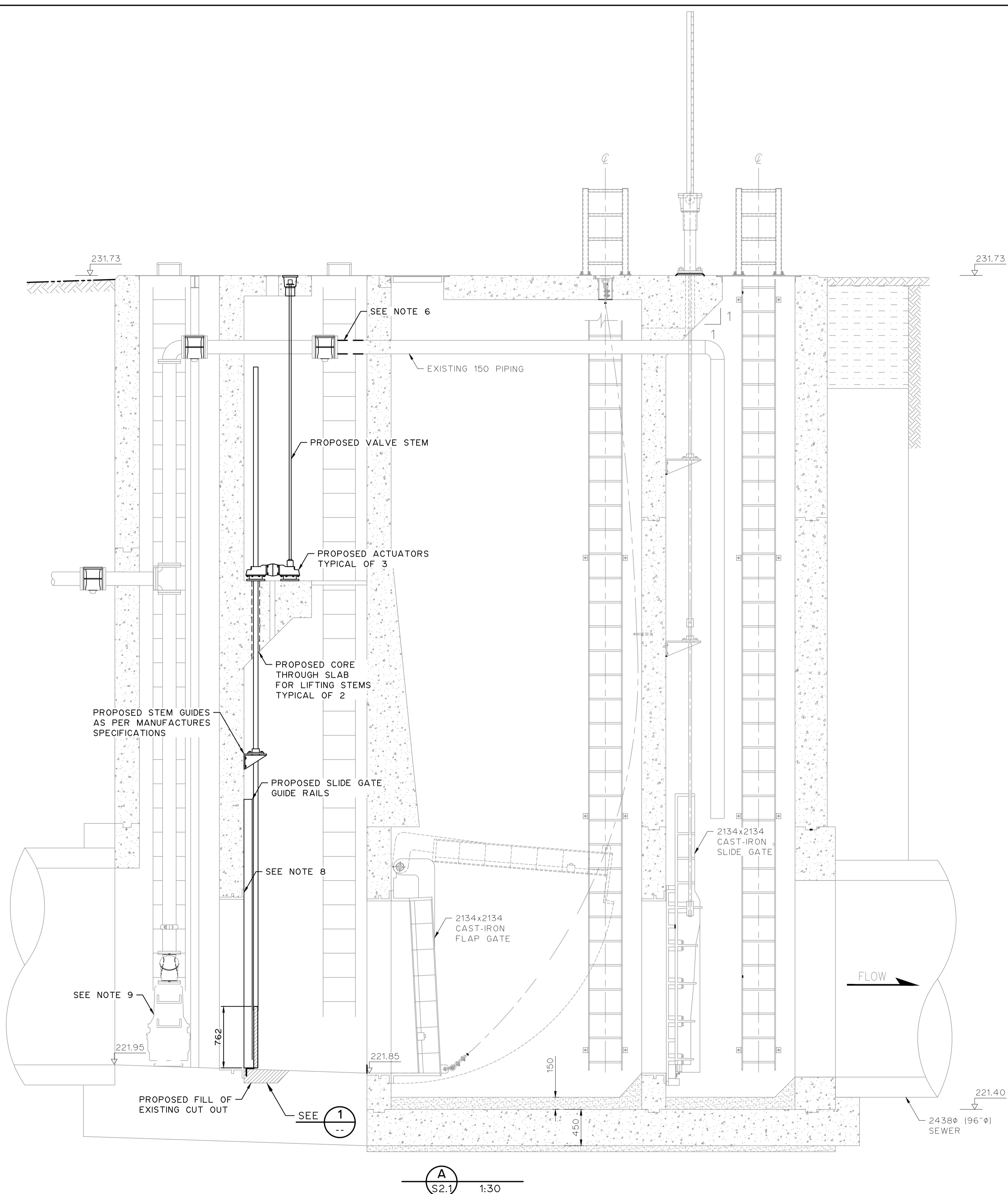
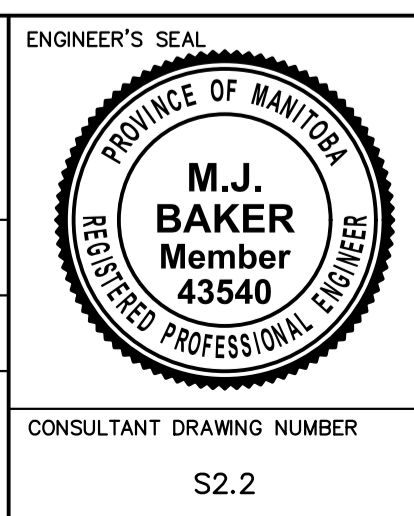


- NOTES:
1. ALL DIMENSIONS IN mm UNLESS NOTED OTHERWISE. ALL ELEVATIONS IN m UNLESS NOTED OTHERWISE.
  2. FIELD VERIFY ALL DIMENSIONS. NOTE ANY DISCREPANCIES WITH ENGINEER PRIOR TO CONSTRUCTION.
  3. SLIDE GATE WEIR AND ANCHORS TO BE INSTALLED ACCORDING TO MANUFACTURERS SPECIFICATIONS.
  4. GATE: 84"x30" (2134x750)
  5. FACE WALL MOUNTED.
  6. REMOVE PIPE SEGMENT AND VALVE IF REQUIRED FOR GATE INSTALLATION. REPLACE AFTER INSTALLATION.
  7. STEM COVERS 114mm $\phi$ .
  8. REMOVE EXISTING GATE FRAME AND ANY MATERIAL THAT MAY IMPEDE THE INSTALLATION AND OPERATION OF THE GATE.
  9. CONTRACTOR RESPONSIBLE FOR DEWATERING AND BYPASS PUMPING TO COMPLETE THE WORK.
  10. REMOVE ALL INFILL GROUT/ASPHALT FROM SECTION. CLEAN AND ROUGHEN SURFACE. EMBED BASE OF FRAME AS PER MANUFACTURER'S RECOMMENDATIONS. FILL VOID WITH SHLAGROUT-112 OR APPROVED EQUAL.



LOCATION APPROVED UNDERGROUND STRUCTURES		B.M. ELEV.
SUPV. U/G STRUCTURES COMMITTEE	DATE	
NOTE: LOCATION OF UNDERGROUND STRUCTURES AS SHOWN ARE BASED ON THE BEST INFORMATION AVAILABLE BUT NO GUARANTEE IS GIVEN THAT ALL EXISTING UTILITIES ARE SHOWN OR THAT THE GIVEN LOCATIONS ARE EXACT. CONFIRMATION OF EXISTENCE AND EXACT LOCATION OF ALL SERVICES MUST BE OBTAINED FROM THE INDIVIDUAL UTILITIES BEFORE PROCEEDING WITH CONSTRUCTION.		
NO.	FOR TENDER REVISIONS	DATE BY
1		2021 11 16 M.J.B.

<b>MPE</b> Engineering Ltd.	
DESIGNED BY M.B. (204)334-3621	CHECKED BY P.N.B.
DRAWN BY C.W.H.	APPROVED BY XX
SCALE: HORIZONTAL AS SHOWN VERTICAL	RELEASED FOR CONSTRUCTION
DATE 2021 11 16	DATE



**THE CITY OF WINNIPEG**  
WATER AND WASTE DEPARTMENT  
ENGINEERING DIVISION

McDERMOT AND FORT ROUGE SRS WEIR GATE UPGRADES

**FORT ROUGE SRS OUTFALL CHAMBER**  
ELEVATION AND SECTIONS

CITY DRAWING NUMBER **1-0204G-S0002-001** SHEET **5** OF **5**