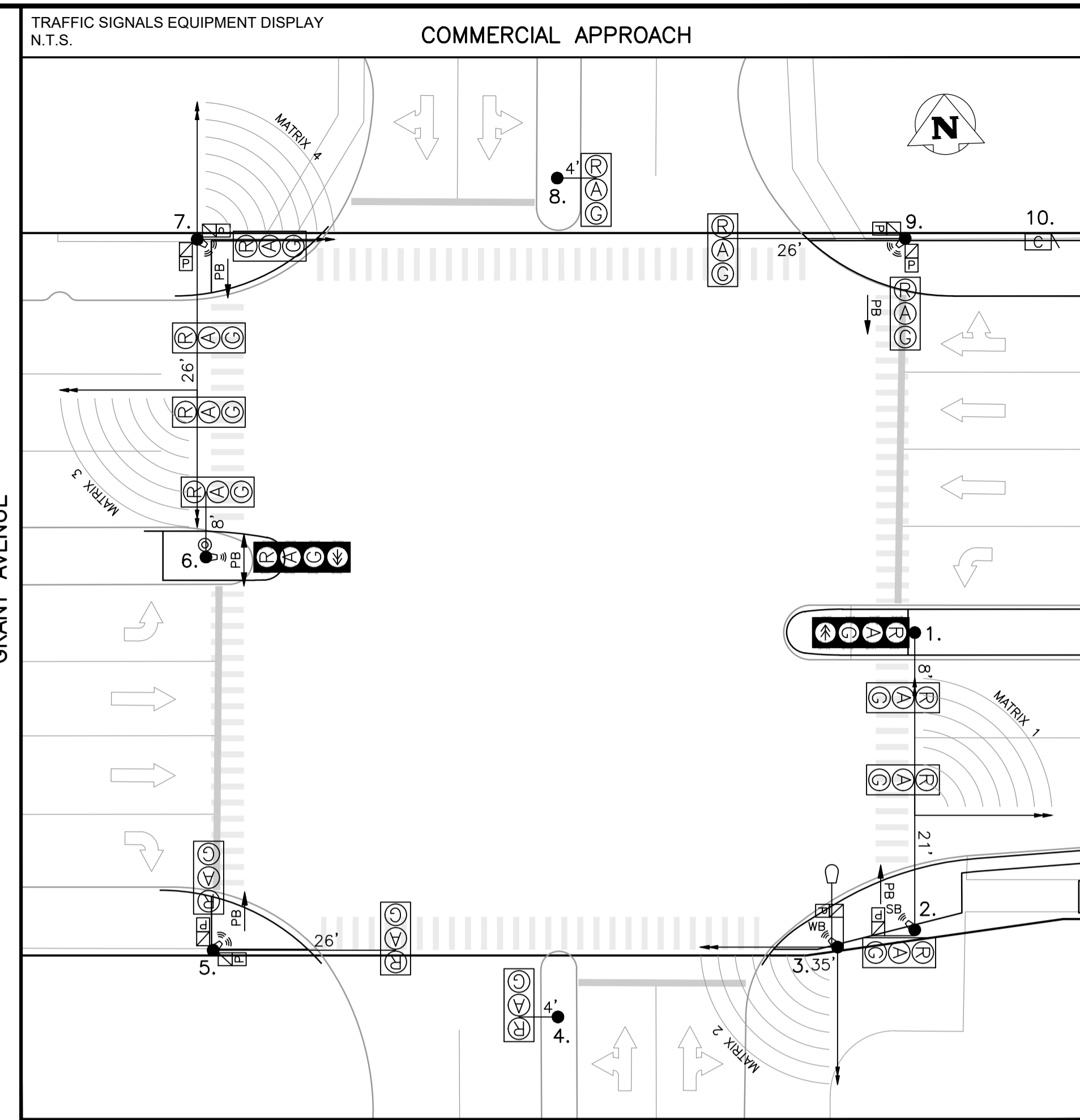
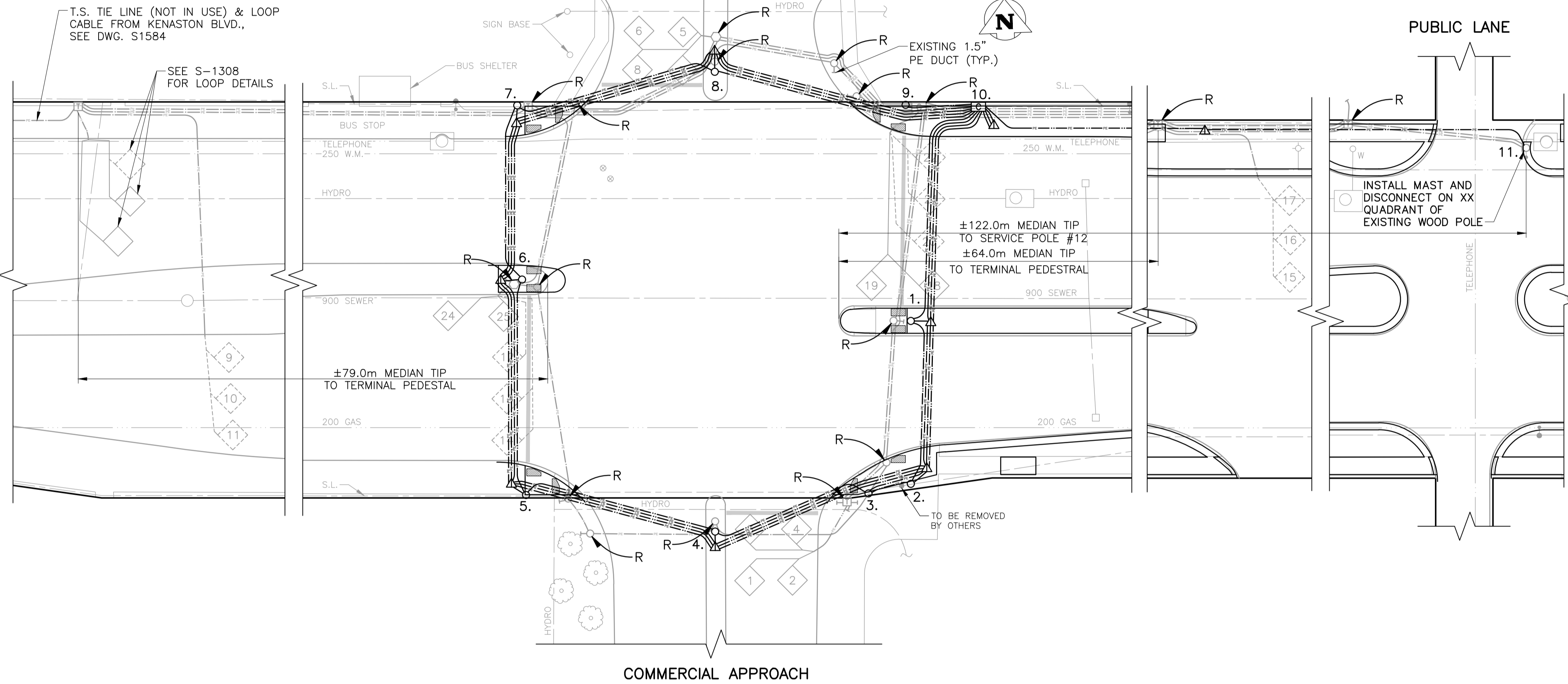


GRANT AVENUE



EQUIPMENT DISPLAY LEGEND

	EXISTING		PROPOSED (AS SHOWN BELOW)		TRAFFIC SIGNAL HEAD		LOW ARM (SHOWN FROM CENTRE)		HIGH ARM (SHOWN FROM SIDE)
	EXISTING		PROPOSED (AS SHOWN BELOW)		TRAFFIC SIGNAL POLE		RED FLASHER		LUMINAIRE
	EXISTING		PROPOSED (AS SHOWN BELOW)		PUSH BUTTON & DIRECTION (P/B = DOUBLE P/B)		RFB (PHASE 'A' OR 'B')		APS DUAL DIRECTION (2 SEPARATE SPEAKERS)
	EXISTING		PROPOSED (AS SHOWN BELOW)		APS SINGLE DIRECTION		APS DUAL DIRECTION (2 SEPARATE SPEAKERS)		AMBER FLASHER (CIRCUIT 'A' OR 'B')
	EXISTING		PROPOSED (AS SHOWN BELOW)		TRAFFIC SIGNAL HEAD		TRAFFIC SIGNAL POLE		LUMINAIRE

NO.	EQUIPMENT LIST	ARM	BASE	B.B.	NO.	EQUIPMENT LIST	ARM	BASE	B.B.
1.	CANTILEVER	8'	OD	DC	11.	HYDRO WOOD SERVICE:			
2.	CANTILEVER	21'	OD	FIXED					
3.	35' SIGNAL FOR XX WATT (XXXX LUMEN) LUMINAIRE		G	GD					
4.	CANTILEVER	4'	OD	DC					
5.	CANTILEVER	26'	G	FIXED					
6.	CANTILEVER FOR CAMERA	8'	G	GC					
7.	CANTILEVER	26'	G	FIXED					
8.	CANTILEVER	4'	OD	DC					
9.	CANTILEVER	26'	G	FIXED					
10.	332 CABINET/2070 CONTROLLER								

TRAFFIC SIGNALS UNDERGROUND LEGEND

	1 1/2" PE CONDUIT		POLE BASE		CONTROLLER BASE
	2" PE CONDUIT		PEDestal BASE		TERMINAL BASE
	4" PVC CONDUIT		SERVICE BOX (PIT)		24" PRECAST PIT
	AERIAL / BURIED CABLE		30" PRECAST PIT		36" PRECAST PIT
	CONDUIT STUB		REMOVAL		
	BREAK-IN				
	SPICE				
	SAW-CUT LOOPS				
	PREFORMED LOOPS				

SIGNAL BASE BOLT SQUARE TYPES

	TYPE "A" - 8 1/8"
	TYPE "B" - 6 3/4"
	TYPE "C" - 8 1/8" SCREW TYPE
	TYPE "D" - 12 3/4", 1 1/4" DIA. BOLTS, 24" DIA.
	TYPE "OD" - 12 3/4", 1 1/4" DIA. BOLTS, 28" DIA.
	TYPE "PD" - 12 3/4", PRECAST, 1 1/4" DIA. BOLTS
	TYPE "E" - 9 9/16" SCREW TYPE
	TYPE "F" - 9 9/16"
	TYPE "G" - 8 1/8", 1 1/4" DIA. BOLTS, 89mm PROJ.
	TYPE "GS" - 8 1/8", 1 1/4" DIA. BOLTS, 76mm PROJ.
	TYPE "PG" - 8 1/8", PRECAST, 1 1/4" DIA. BOLTS
	TYPE "H" - 9 7/8" SCREW TYPE
	TYPE "I" - 7 3/4"
	TYPE "J" - 10 5/8", 1 1/4" DIA. BOLTS
	TYPE "K" - 10 5/8", PRECAST, 1 1/4" DIA. BOLTS
	TYPE "L" - 6", 5/8" DIA. BOLTS
	TYPE "PM" - 8 1/8", PRECAST, 5/8" DIA. BOLTS

EXISTING	LEGEND	PROPOSED	EXISTING	LEGEND	PROPOSED	EXISTING	LEGEND	PROPOSED
	WATERMAIN			PROPERTY LINE			TELEPHONE	
	HYDRANT			ROADWAY			TELEPHONE	
	VALVE			SIDEWALK			WOOD POLE	
	SEWER			CURB & CURB RAMP			STREET LIGHT	
	MANHOLE			WARNING TILE			BANNER POLE	
	CATCH BASIN			SLOPE			RAILWAY POLE	
	CURB INLET			CULVERT			GUY-WIRE	
	HYDRO			BUILDING			FENCE	
	GAS			TREE			GUARDRAIL	

UNDERGROUND STRUCTURES

UNDERGROUND STRUCTURES ID	DATE (YYYYMMDD)
WATER & WASTE REVIEW ID	

NOTE: LOCATIONS OF UNDERGROUND STRUCTURES AS SHOWN ARE BASED ON THE BEST INFORMATION AVAILABLE. BUT NO GUARANTEE IS GIVEN THAT ALL EXISTING UTILITIES ARE SHOWN OR THAT THE GIVEN LOCATIONS ARE EXACT. CONFIRMATION OF EXISTENCE AND EXACT LOCATION OF ALL SERVICES MUST BE OBTAINED FROM THE INDIVIDUAL UTILITIES BEFORE PROCEEDING WITH CONSTRUCTION.

CONSTRUCTION REVISIONS

NO.	REVISION	DATE (YYYYMMDD)	BY	APPROVED BY
A	PRELIMINARY DESIGN			

ACCOUNTS:

DESIGNED BY: R.S.

DRAWN BY: R.S.

CHECKED BY:

APPROVED BY:

LIABILITY DISCLAIMER NOTICE: THE DIGITAL INFORMATION PROVIDED FOR YOUR CONVENIENCE HEREIN IS FOR USE AT YOUR OWN RISK. THE CITY OF WINNIPEG, PUBLIC WORKS DEPARTMENT, SHALL ASSUME NO RESPONSIBILITY FOR THE INFORMATION AND IT SHOULD NOT BE CONSTRUED AS ASSULT INFORMATION. THE INFORMATION SHOULD BE USED FOR PLANNING PURPOSES ONLY AND SHOULD BE VERIFIED BY SURVEY. THE DEPARTMENT SHALL NOT IN ANY WAY SUFFER ANY LIABILITY WHATSOEVER TO ANY PARTY FOR INJURY, LOSS OR DAMAGES SUFFERED BY SUCH PARTY ARISING FROM THEIR USE OF, OR RELIANCE UPON, THIS INFORMATION.

ENGINEER'S SEAL:

PRELIMINARY

NOT FOR CONSTRUCTION

THE CITY OF WINNIPEG

Winnipeg

PUBLIC WORKS DEPARTMENT

TRANSPORTATION DIVISION

TRAFFIC SIGNALS

GRANT AVE. 155m E OF KENASTON BLVD.

UNITS: ALL DIMENSIONS ARE IN METERS UNLESS OTHERWISE NOTED

DRAWING NUMBER: S-1225