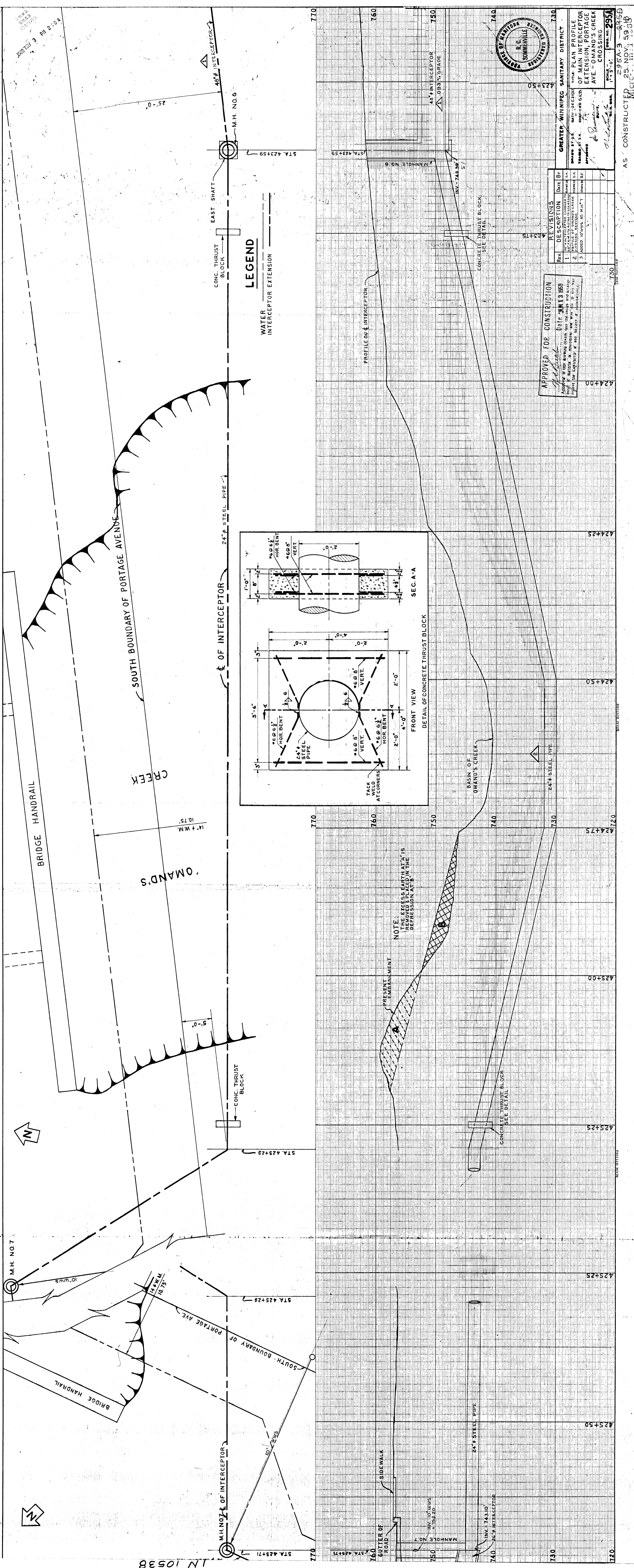


APPENDIX A

AS-BUILT/RECORD DRAWING INFORMATION



LEGEND

WATER INTERCEPTOR EXTENSION

CONC. THRUST BLOCK

EAST SHAFT

48" INTERCEPTOR

M.H. NO. 6

STA. 423+59

25'-0"

48" INTERCEPTOR

0.091% GRADE

750

740

730

720

710

700

690

680

670

660

650

640

630

620

610

600

590

580

570

560

550

540

530

520

510

500

490

480

470

460

450

440

430

420

410

400

390

380

370

360

350

340

330

320

310

300

290

280

270

260

250

240

230

220

210

200

190

180

170

160

150

140

130

120

110

100

90

80

70

60

50

40

30

20

10

0

-10

-20

-30

-40

-50

-60

-70

-80

-90

-100

-110

-120

-130

-140

-150

-160

-170

-180

-190

-200

-210

-220

-230

-240

-250

-260

-270

-280

-290

-300

-310

-320

-330

-340

-350

-360

-370

-380

-390

-400

-410

-420

-430

-440

-450

-460

-470

-480

-490

-500

-510

-520

-530

-540

-550

-560

-570

-580

-590

-600

-610

-620

-630

-640

-650

-660

-670

-680

-690

-700

-710

-720

-730

-740

-750

-760

-770

-780

-790

-800

-810

-820

-830

-840

-850

-860

-870

-880

-890

-900

-910

-920

-930

-940

-950

-960

-970

-980

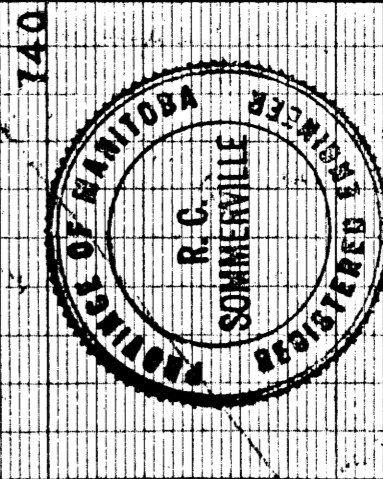
-990

-1000

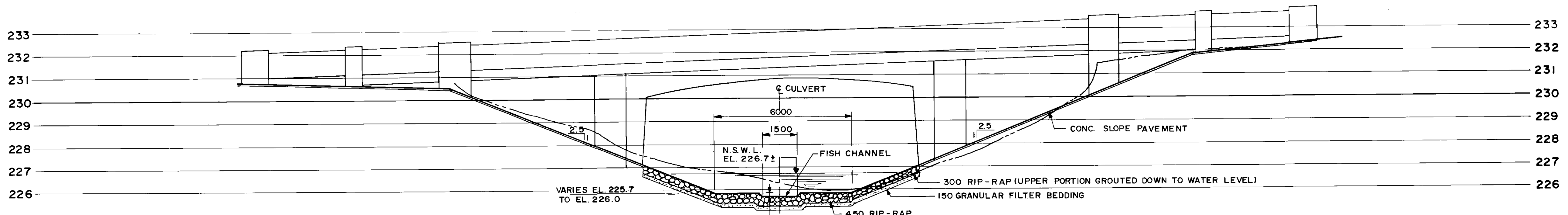
APPROVED FOR CONSTRUCTION
Date: JUNE 1950
James Jessop

REV.	DESCRIPTION	DATE	BY
1	REVISIONS		
2			
3			

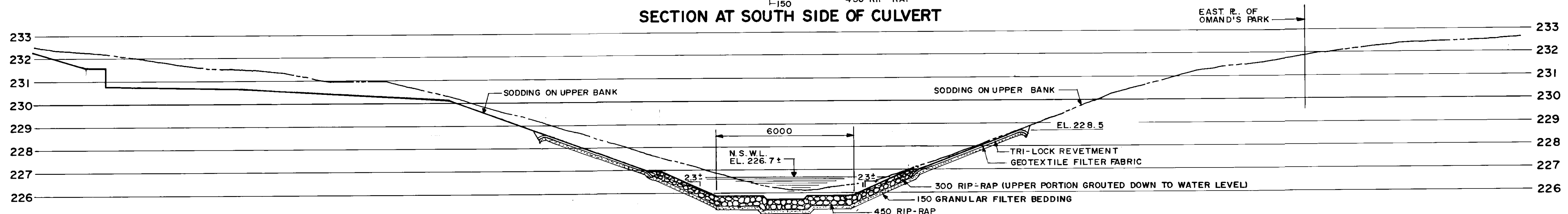
GREATER WINNIPEG SANITARY DISTRICT
TITLE: PLAN PROFILE
OF MAIN INTERCEPTOR
EXTENSION ON PORTAGE
AVE. - OMAND'S CREEK
CROSSING



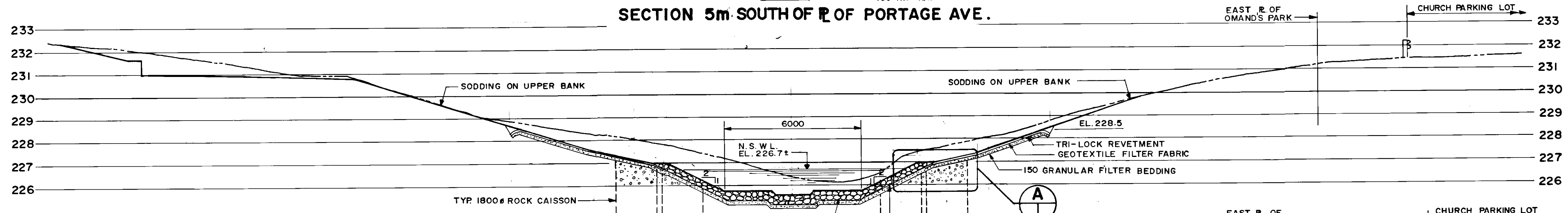
AS CONSTRUCTED 295A-3 045D
25 NOV. 59 148
M.C.C. 11.31



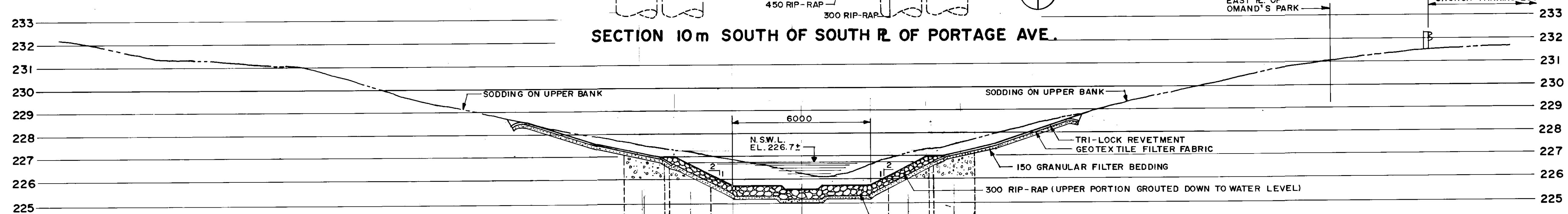
SECTION AT SOUTH SIDE OF CULVERT



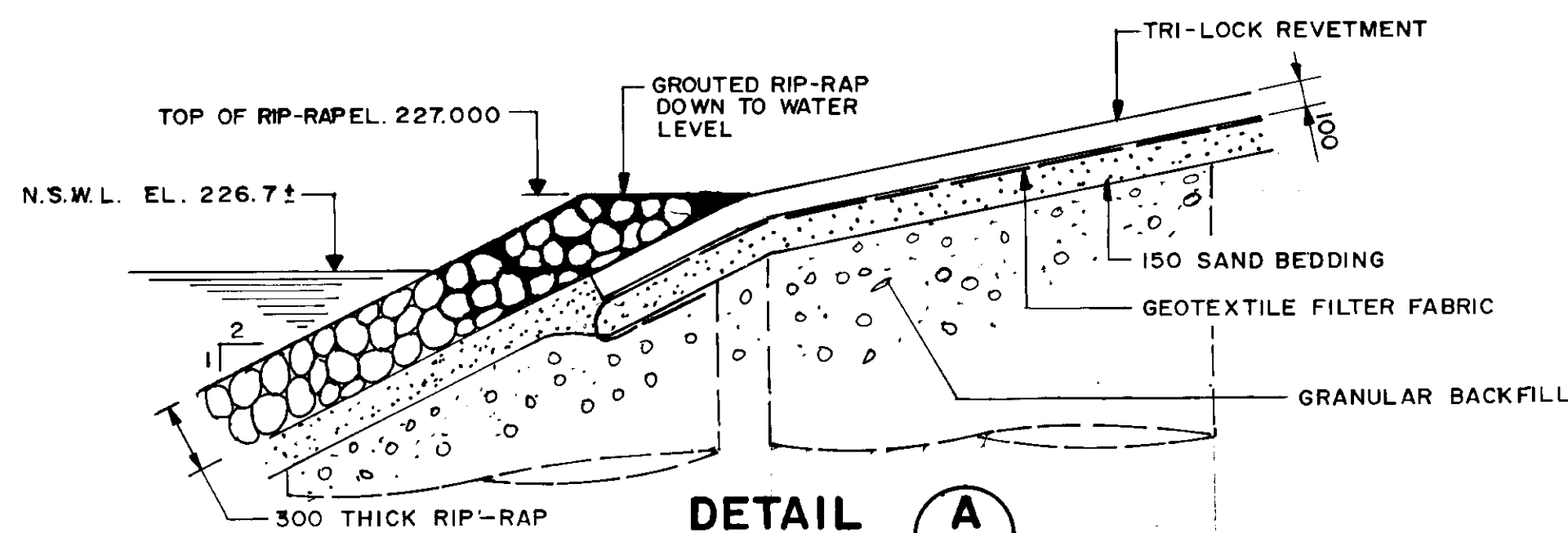
SECTION 5m SOUTH OF R. OF PORTAGE AVE.



SECTION 10m SOUTH OF SOUTH R. OF PORTAGE AVE.



SECTION 20m SOUTH OF SOUTH R. OF PORTAGE AVE.



DETAIL A
1:25

LOCATION APPROVED
UNDERGROUND STRUCTURES

DESIGNED BY: W.P.S./SSR.
DRAWN BY: W.P.S./NBG.
HOR. SCALE: 1:100 OR VERTICAL: NOTED
DATE: NOV. 1994

NO.	REVISIONS	DATE	BY

DILLON
Consulting Engineers • Planners
Environmental Scientists

DESIGNED BY: W.P.S./SSR.
CHECKED BY: S.SR.
DRAWN BY: W.P.S./NBG.
APPROVED BY: [Signature]
DATE: 94/11/27



PROVINCE OF MANITOBA
Nov 29/94
S.S. RIHAL
REGISTERED PROFESSIONAL ENGINEER

CONSULTANT DRAWING NO. 92-3813-02-06A

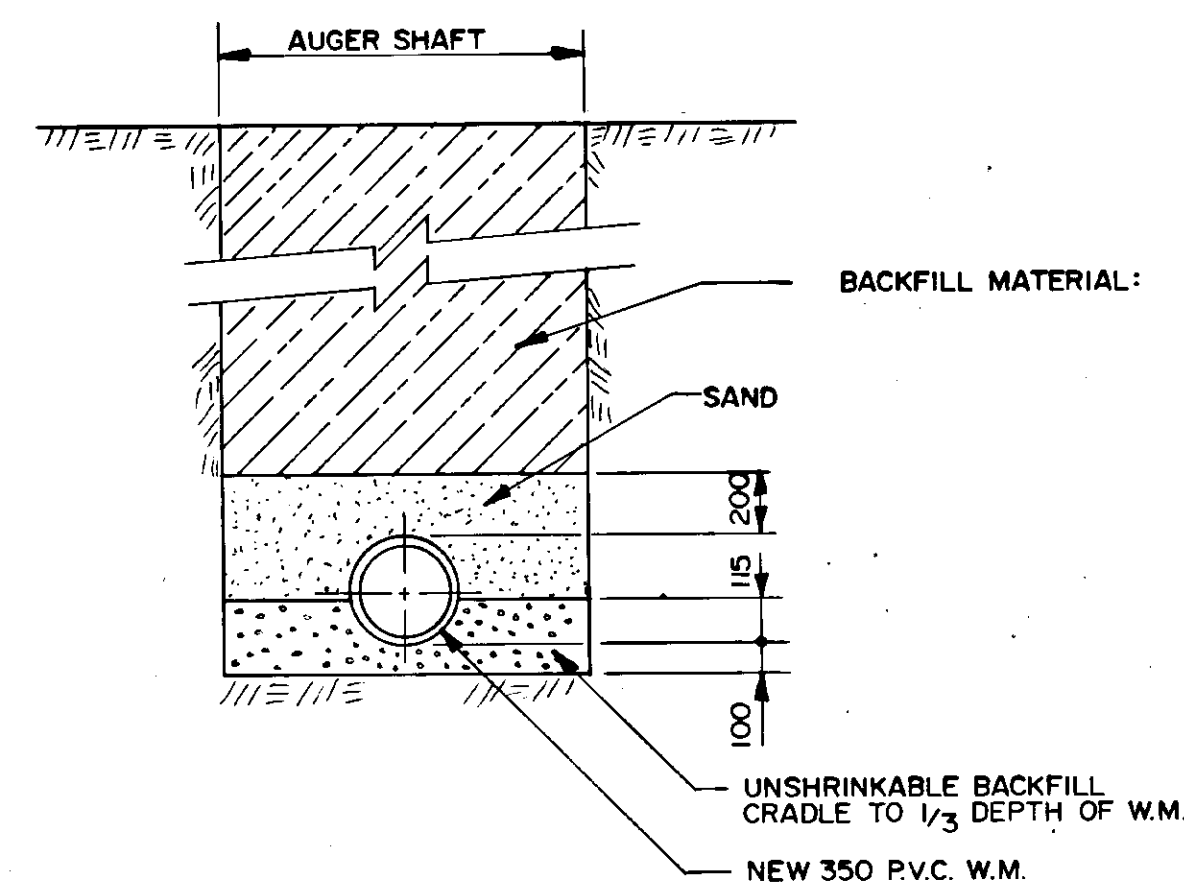
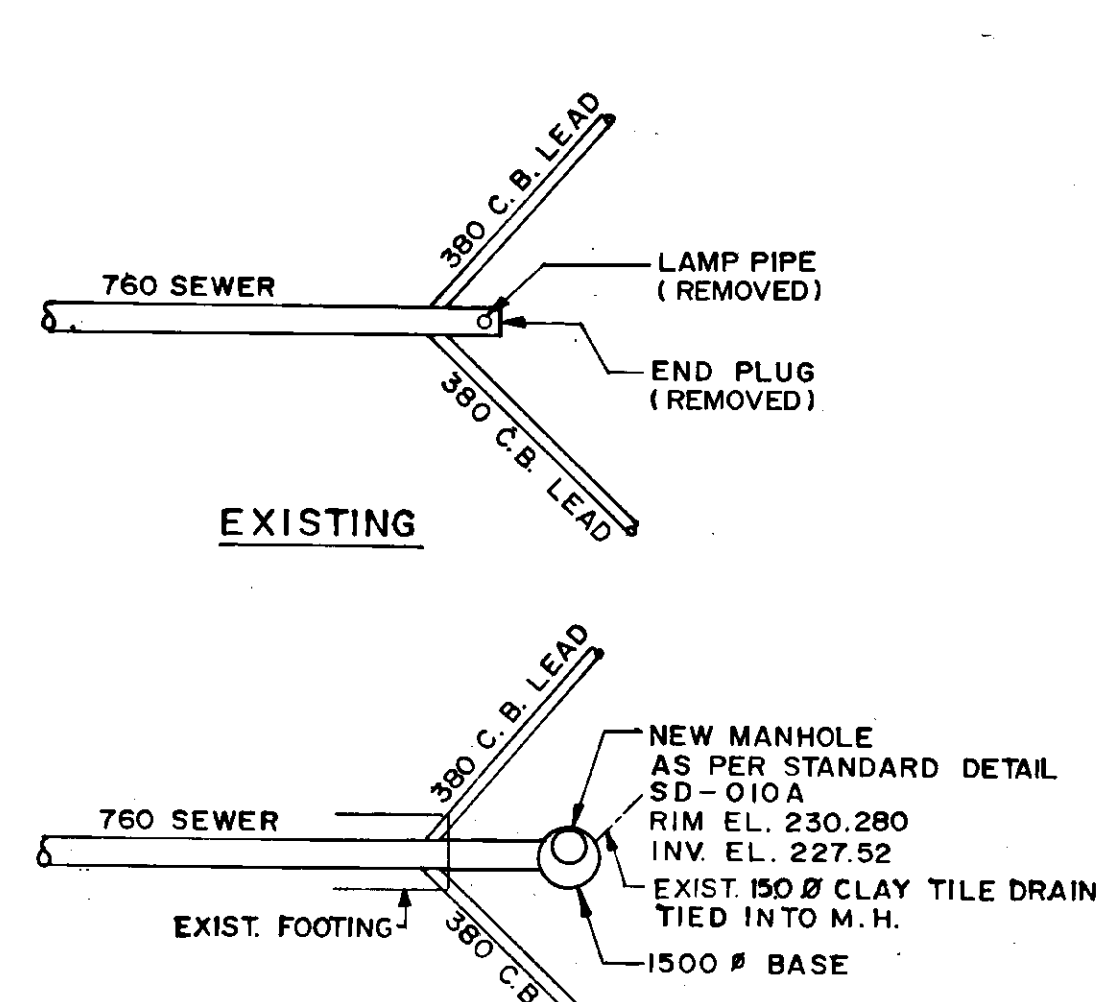
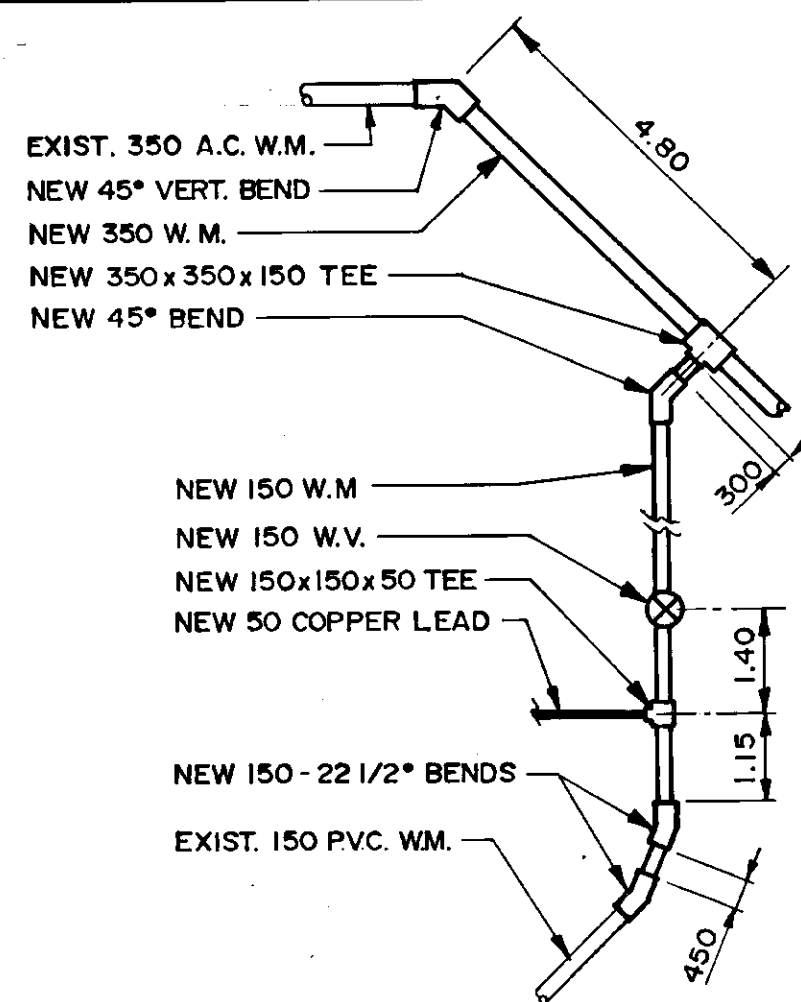
THE CITY OF WINNIPEG
WORKS AND OPERATIONS DIVISION
STREETS AND TRANSPORTATION DEPARTMENT

PORTAGE AVE. CULVERT & UNDERPASS
OMAND'S CREEK CULVERT REHABILITATION,
UNDERPASS ROADWAY RESURFACING
AND RELATED WORKS

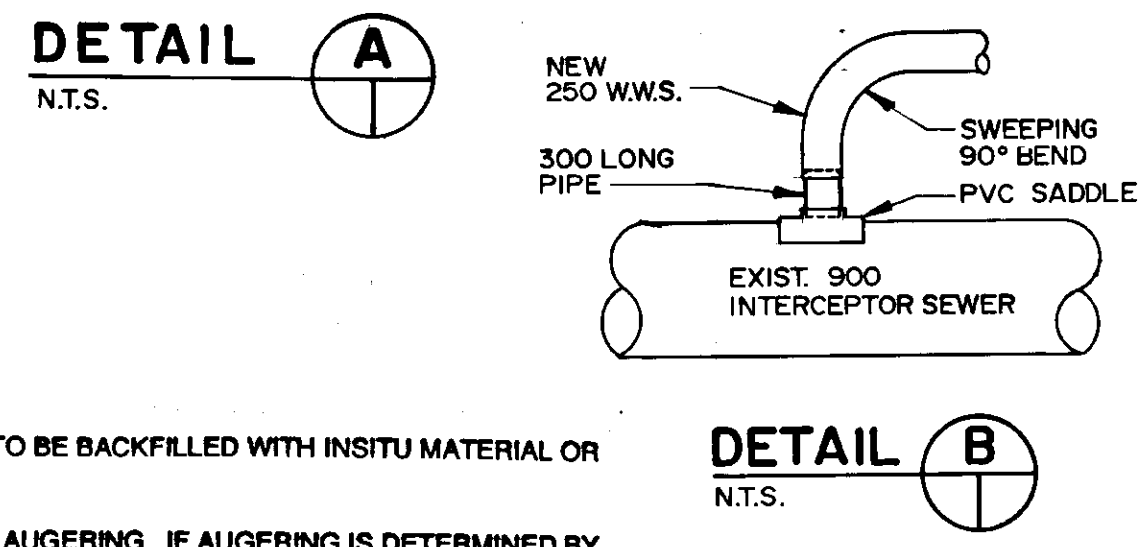
CREEK CHANNEL CROSS SECTIONS
SOUTH OF CULVERT

CITY DRAWING NUMBER U200-95-06A
SHEET OF
B-5983-6A

RECORD DRAWING
APPROVED BY: [Signature] DATE: 20/20/96

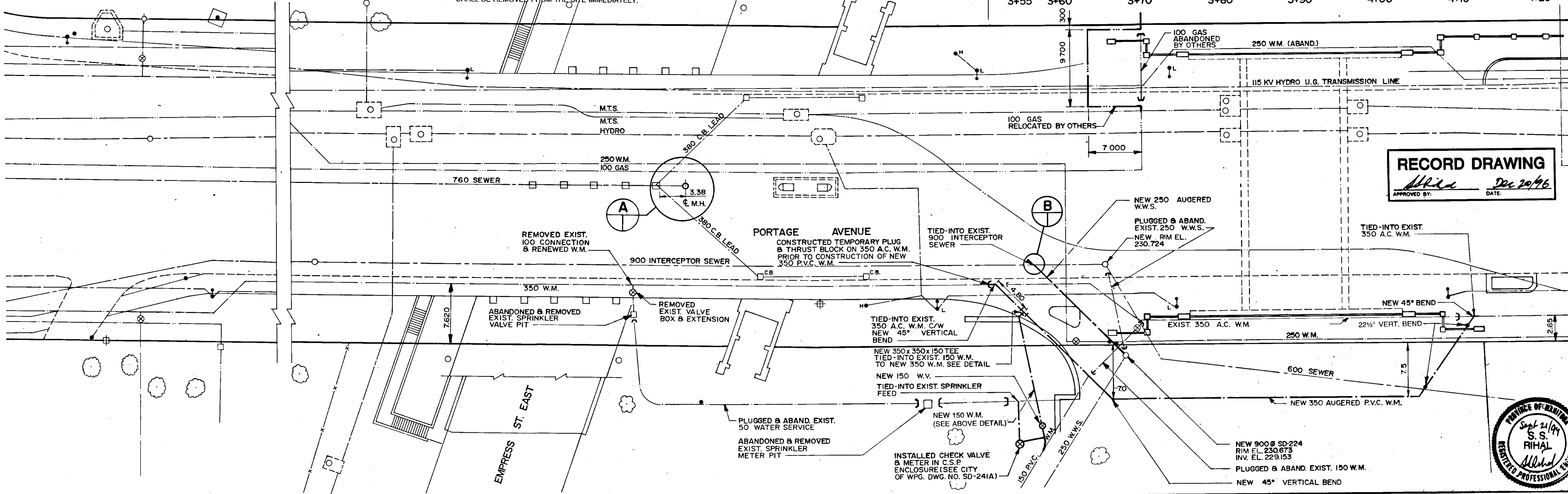
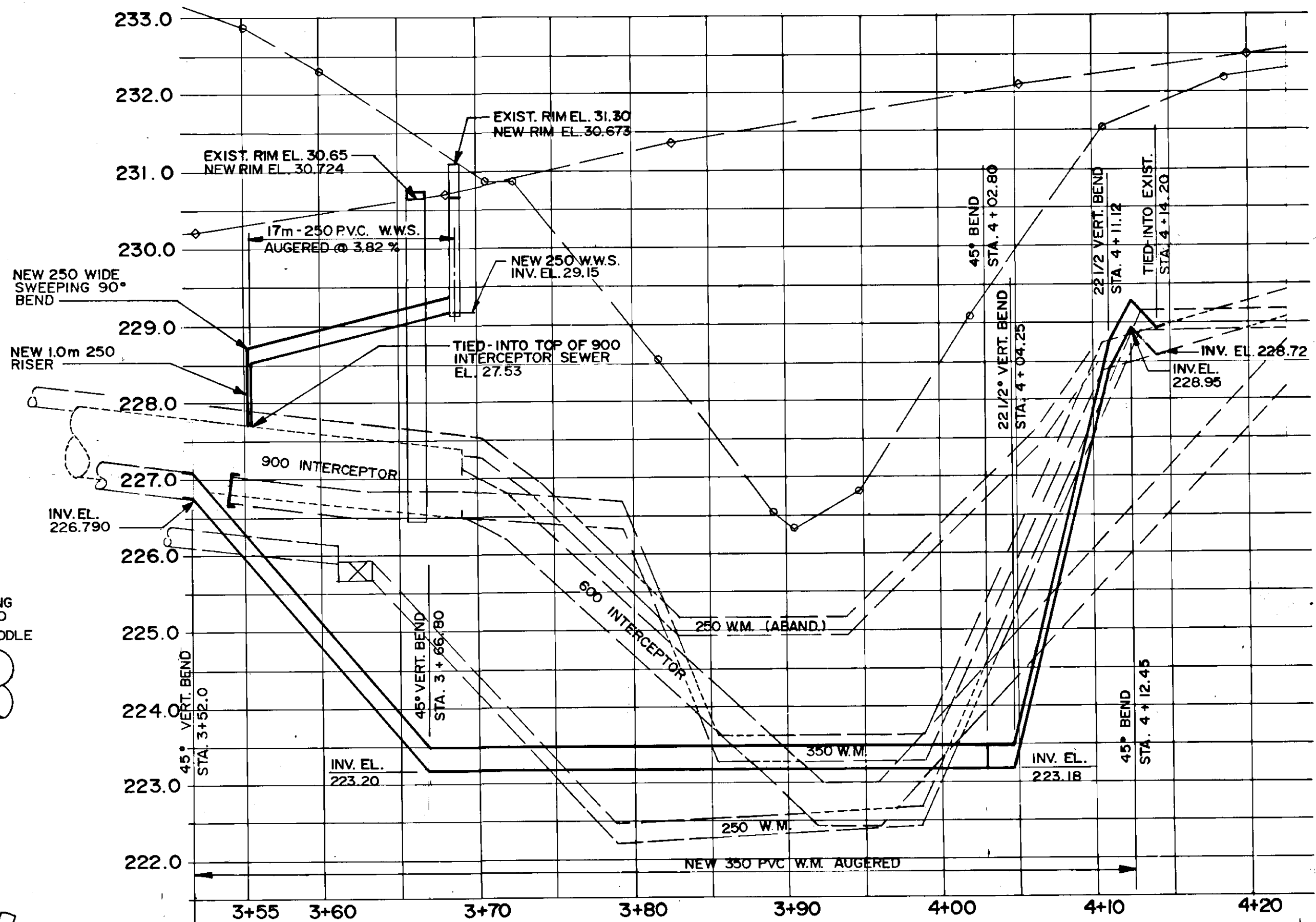


NEW 150 Ø WATERMAIN DETAIL
N.T.S.

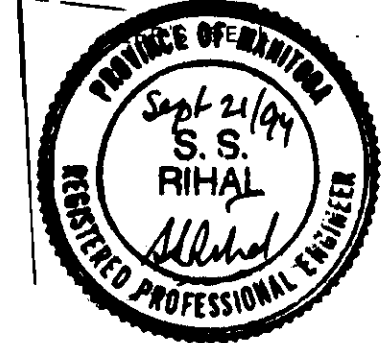


NOTES

- SHAFTS FOR WATERMAIN INSTALLATION TO BE BACKFILLED WITH INSITU MATERIAL OR AS INDICATED ON AUGER SHAFT DETAIL.
- THE WATERMAIN SHALL BE INSTALLED BY AUGERING. IF AUGERING IS DETERMINED BY THE CONTRACT ADMINISTRATOR TO BE IMPOSSIBLE, THEN AN APPROVED OPEN CUT INSTALLATION MAY BE REQUIRED.
- EXCAVATED MATERIAL SHALL AT NO TIME BE STOCKPILED AT OR NEAR THE TOP EDGE OF THE EMBANKMENT AND SLOPES. SURPLUS EXCAVATED MATERIAL SHALL BE REMOVED FROM THE SITE IMMEDIATELY.



RECORD DRAWING
APPROVED BY: *[Signature]* DATE: Dec 20/96



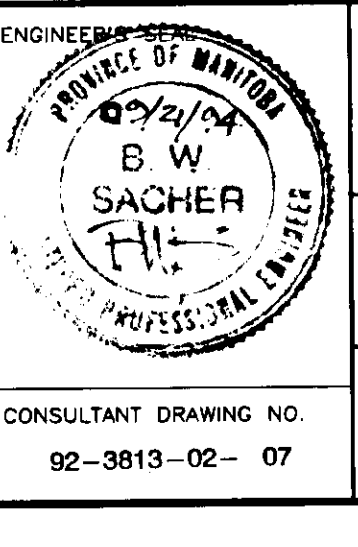
EXISTING	LEGEND-PLAN	PROPOSED	EXISTING	LEGEND-PLAN	PROPOSED	EXISTING	LEGEND-PROFILE	PROPOSED
150 mm W.M.	WATERMAIN	150 mm W.M.	HYDRO	150 mm W.M.	WATERMAIN	150 mm W.M.	WATERMAIN	150 mm W.M.
Hydrant	Hydrant	Hydrant	M.T.S.	Hydrant	Hydrant	Hydrant	Hydrant	Hydrant
Valve	Valve	Valve	Concrete	Valve	Valve	Valve	Valve	Valve
300 mm L.D.S.	LAND DRAINAGE SEWER	300 mm L.D.S.	Asphalt	300 mm L.D.S.	LAND DRAINAGE SEWER	300 mm L.D.S.	LAND DRAINAGE SEWER	300 mm L.D.S.
250 mm W.W.S.	WASTE WATER SEWER	250 mm W.W.S.	Property Line	250 mm W.W.S.	WASTE WATER SEWER	250 mm W.W.S.	WASTE WATER SEWER	250 mm W.W.S.
Manhole	Manhole	Manhole	Survey Bar	Manhole	Manhole	Manhole	Manhole	Manhole
Catch Basin	Catch Basin	Catch Basin		Catch Basin	Catch Basin	Catch Basin	Catch Basin	Catch Basin
Curb Inlet	Curb Inlet	Curb Inlet		Curb Inlet	Curb Inlet	Curb Inlet	Curb Inlet	Curb Inlet
Junctions	Junctions	Junctions		Junctions	Junctions	Junctions	Junctions	Junctions
Culvert	Culvert	Culvert		Culvert	Culvert	Culvert	Culvert	Culvert
Gas	Gas	Gas		Gas	Gas	Gas	Gas	Gas

UNDERGROUND STRUCTURES
DATE: _____
NOTE: LOCATION OF UNDERGROUND STRUCTURES AS SHOWN ARE BASED ON THE BEST INFORMATION AVAILABLE. BUT NO GUARANTEE IS GIVEN THAT ALL EXISTING UTILITIES ARE SHOWN OR THAT THE GIVEN LOCATIONS ARE EXACT. CONFIRMATION OF EXISTENCE AND EXACT LOCATION OF ALL SERVICES MUST BE OBTAINED FROM THE INDIVIDUAL UTILITIES BEFORE PROCEEDING WITH CONSTRUCTION.

NO.	REVISIONS	DATE	BY

DILLON
Consulting Engineers • Planners
Environmental Scientists

DESIGNED BY: B.W.S. CHECKED BY: B.W.S./S.S.R.
DRAWN BY: D.M.W. APPROVED BY: *[Signature]*
HOR. SCALE: 1:250
VERTICAL: 1:50
DATE: SEPT 94

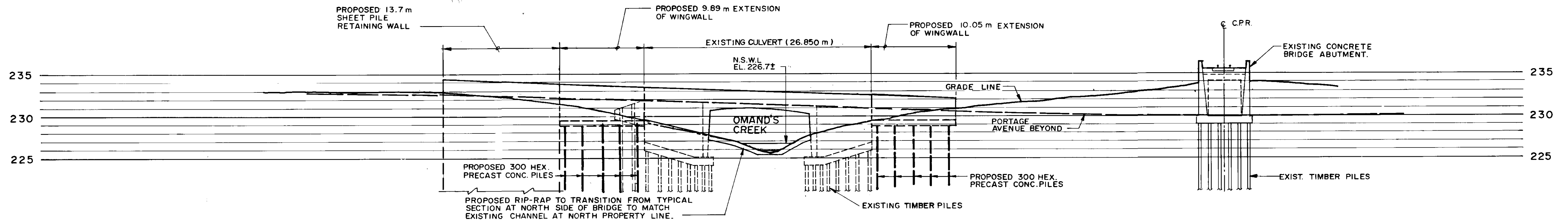


THE CITY OF WINNIPEG
WORKS AND OPERATIONS DIVISION
STREETS AND TRANSPORTATION DEPARTMENT

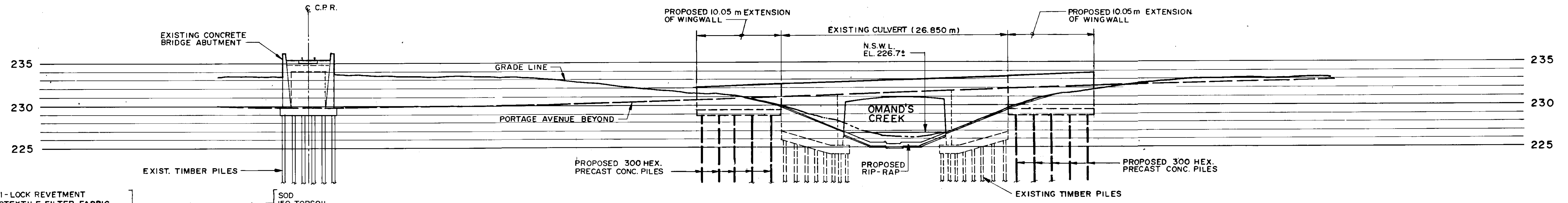
PORTAGE AVE. CULVERT & UNDERPASS
OMAND'S CREEK CULVERT REHABILITATION,
UNDERPASS ROADWAY RESURFACING
AND RELATED WORKS

UNDERGROUND UTILITY RELOCATIONS
AND RELATED WORKS

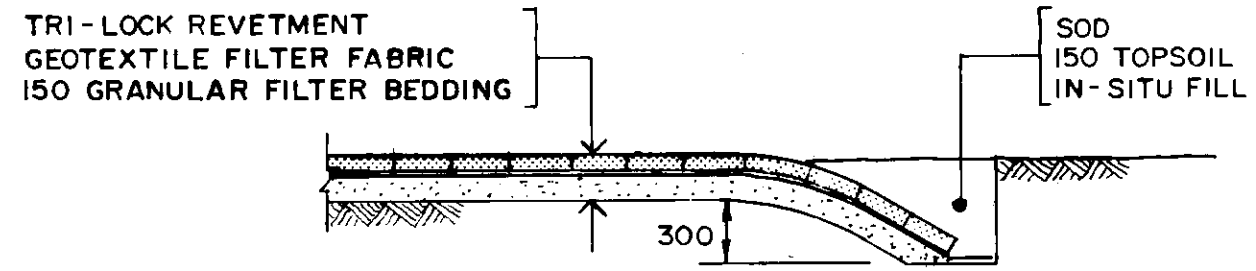
CITY DRAWING NUMBER: U200-95-07
SHEET OF
B-5983-7



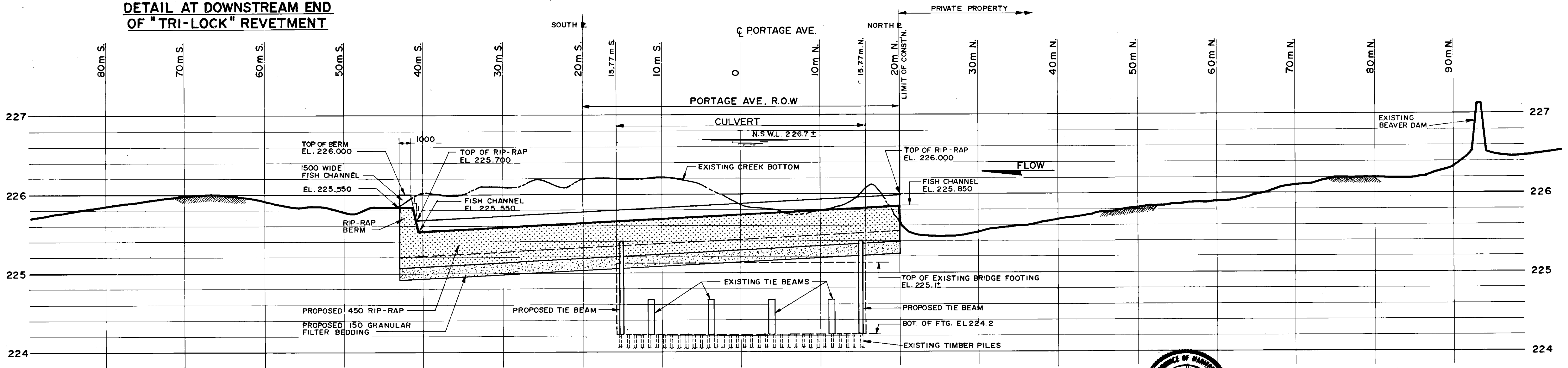
SECTION ALONG NORTH PROPERTY LINE OF PORTAGE AVENUE (LOOKING SOUTH)
SCALE 1: 250



SECTION ALONG SOUTH PROPERTY LINE OF PORTAGE AVENUE (LOOKING NORTH)
SCALE 1: 250



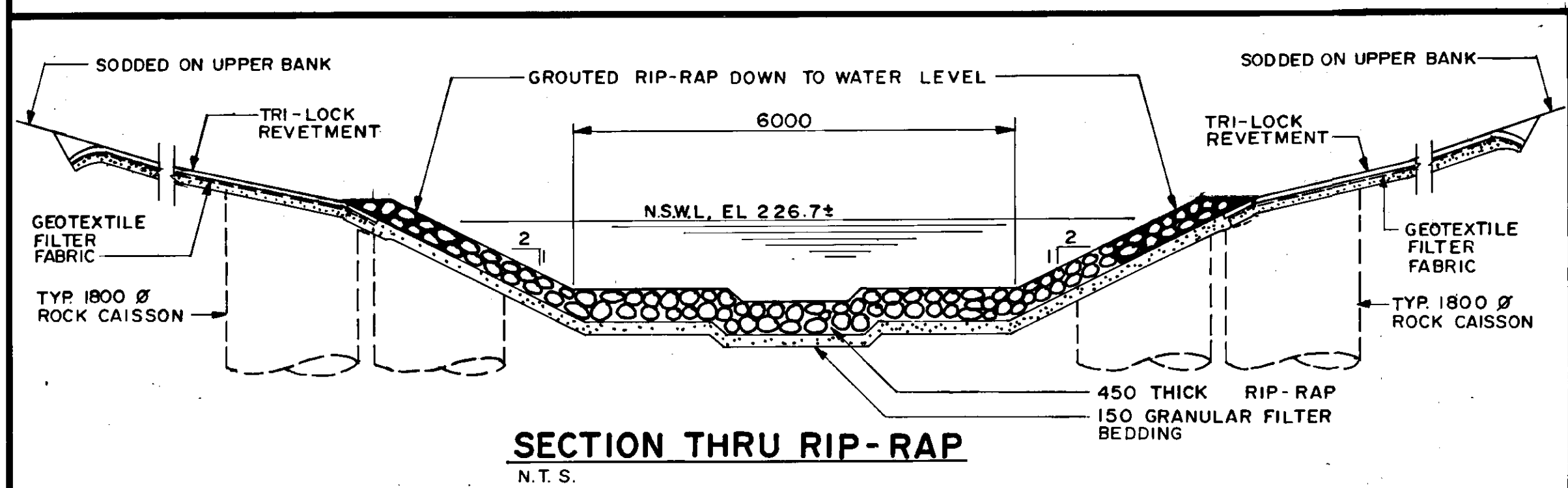
DETAIL AT DOWNSTREAM END OF "TRI-LOCK" REVETMENT



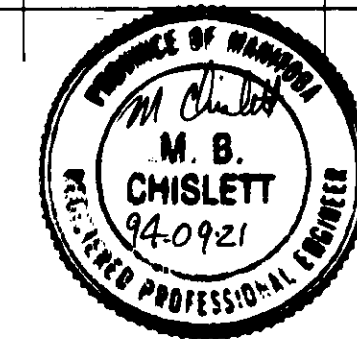
PROFILE OF CREEK BOTTOM (LOOKING WEST)

SCALE: HOR. 1: 250
VERT. 1: 25

NOTE: UTILITY PIPES UNDER CREEK BED NOT SHOWN FOR CLARITY



SECTION THRU RIP-RAP
N.T.S.



RECORD DRAWING
APPROVED BY: *[Signature]* DATE: 20/20/96

NO.	REVISIONS	DATE	BY

DILLON
Consulting Engineers - Planners
Environmental Scientists

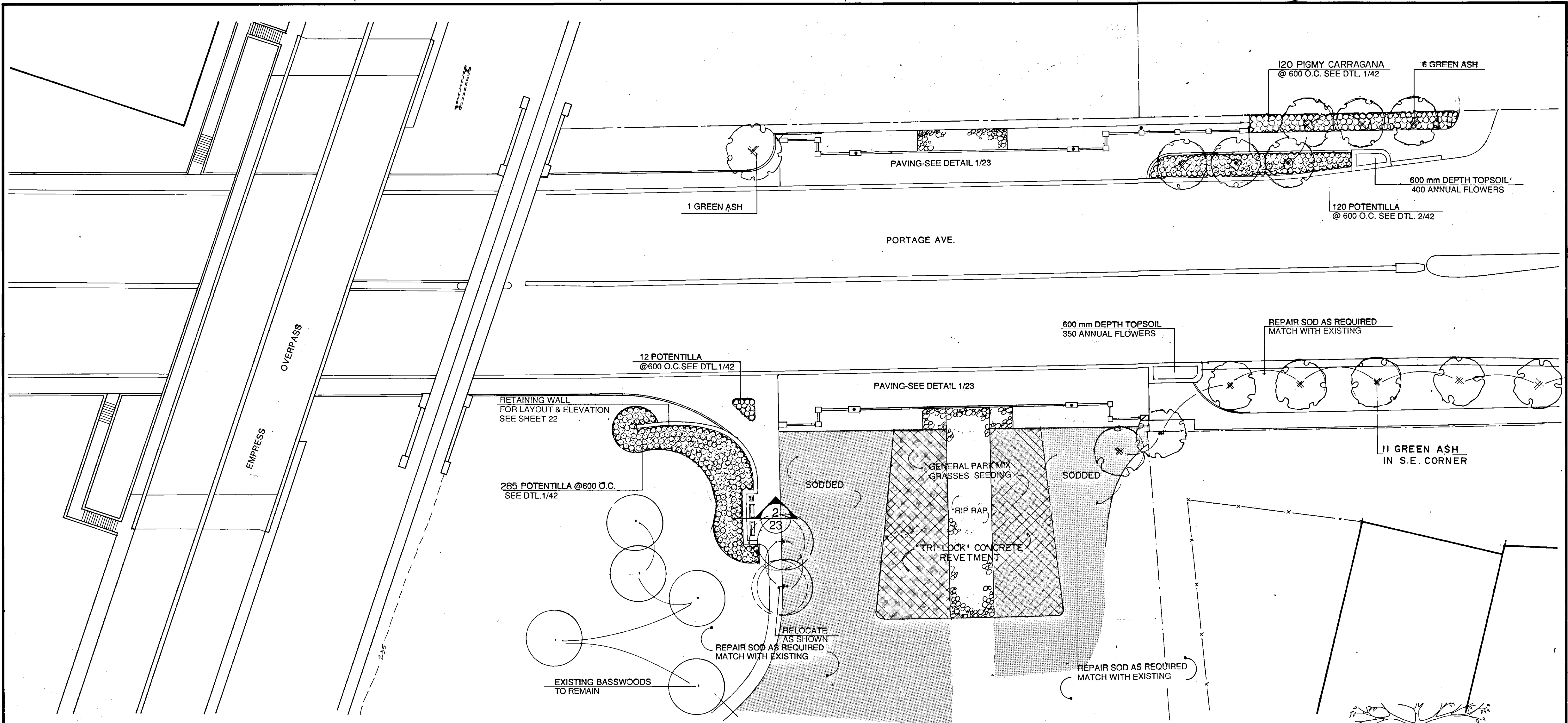
DESIGNED BY: S.S.R. CHECKED BY: S.S.R./M.B.C.
DRAWN BY: W.P.S. APPROVED BY: *[Signature]*
HOR. SCALE: AS SHOWN
VERTICAL: AS SHOWN
DATE: SEPT 1994

ENGINEER: *[Signature]*
S.S. RIMAL
CONSULTANT DRAWING NO. 92-3813-02-08

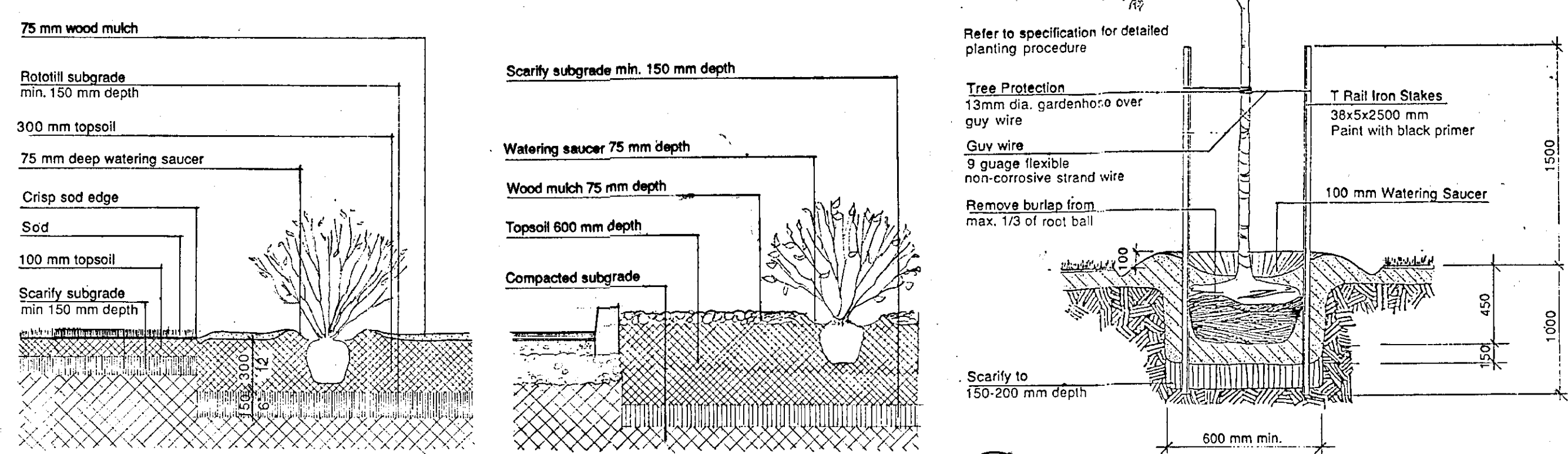
THE CITY OF WINNIPEG
WORKS AND OPERATIONS DIVISION
STREETS AND TRANSPORTATION DEPARTMENT

PORTAGE AVE. CULVERT & UNDERPASS
OMAND'S CREEK CULVERT REHABILITATION,
UNDERPASS ROADWAY RESURFACING
AND RELATED WORKS

CITY DRAWING NUMBER: U200-95-08
SHEET OF
OMAND'S CREEK CROSS SECTIONS & PROFILE
B-5983-8



PLAN



RECORD DRAWING
 APPROVED BY: *[Signature]* DATE: 04/20/96

B.M. ELEV.	Hilderman Witty Crosby & Hanna Associates Landscape Architects & Planners	DILLON Consulting Engineers, Planners & Environmental Scientists	ENGINEER'S SEAL G. HILDERMAN Member No. [blank]	THE CITY OF WINNIPEG WORKS AND OPERATIONS DIVISION STREETS AND TRANSPORTATION DEPARTMENT PORTAGE AVE. CULVERT & UNDERPASS OMAND'S CREEK CULVERT REHABILITATION, UNDERPASS, ROADWAY RESURFACING AND RELATED WORKS	CITY DRAWING NUMBER U200-95-43
DESIGNED BY: G.H.	CHECKED BY: G.H./N.J.	APPROVED BY: <i>[Signature]</i> DATE: 9/11/92	CONSULTANT DRAWING NO. 92-3813-02-43		SHEET OF
DRAWN BY: N.J.	HOR. SCALE: 1:250	ACCEPTED BY: <i>[Signature]</i> DATE: 9/11/92	LANDSCAPING & PLANTING	B-5983-39	
NO. REVISIONS	DATE BY	DATE	SEPT. 1994		