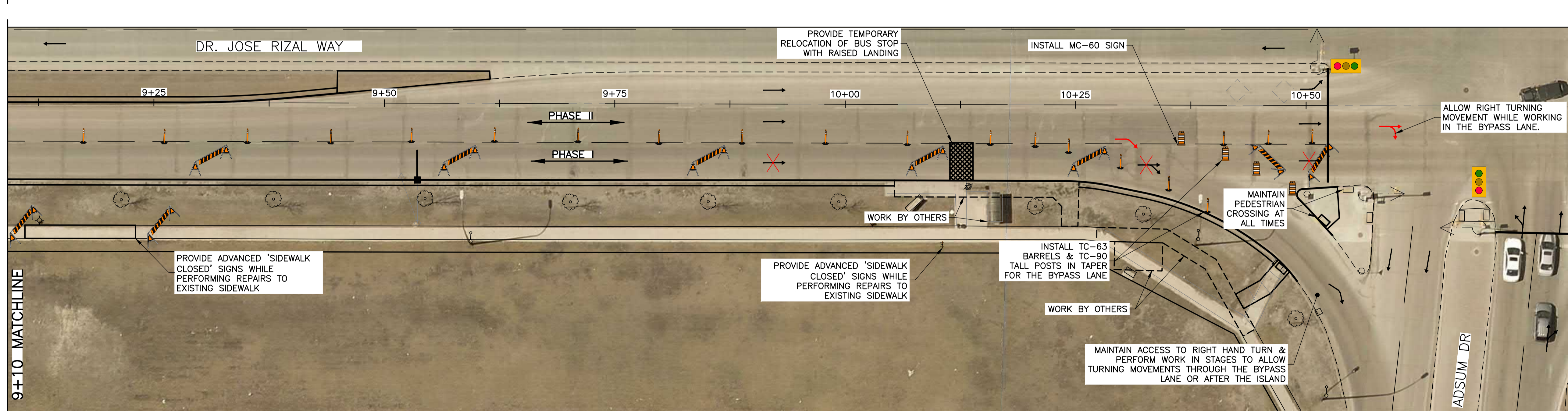
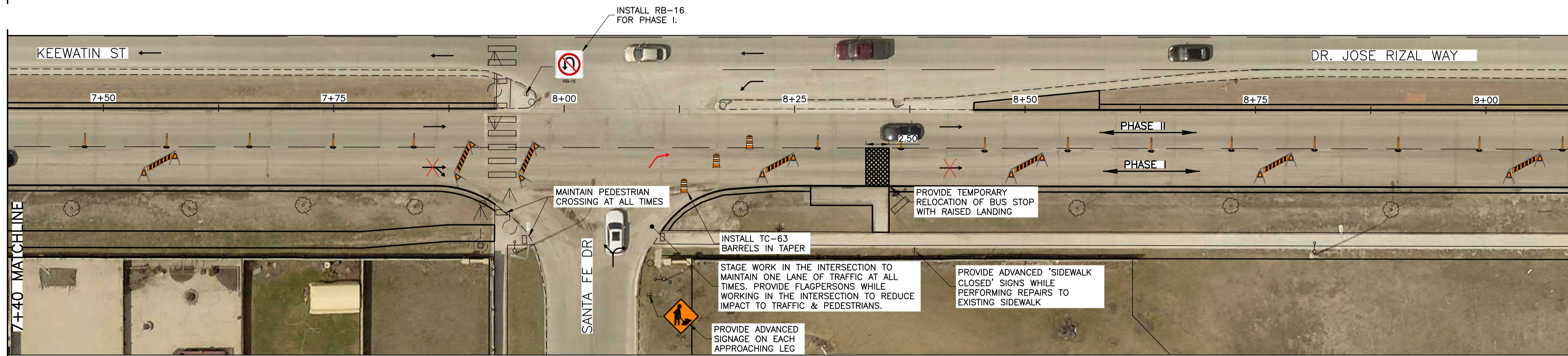


- GENERAL NOTES:**
1. ALL TEMPORARY TRAFFIC CONTROL TO BE IN ACCORDANCE WITH THE LATEST MANUAL OF TEMPORARY TRAFFIC CONTROL ON CITY STREETS (MTTC).
  2. PERFORM WORK IN STAGES TO MINIMIZE IMPACT TO TRAFFIC FLOW AND ACCESS TO BUSINESSES.
  3. NOT ALL REQUIRED SIGNAGE IS SHOWN FOR EACH PHASE & SUB-PHASE.
  4. ALL MAJOR ASPHALT OR CONCRETE PAVING SHALL BE DONE AT OFF-PEAK HOURS TO MINIMIZE IMPACT TO TRAFFIC.
  5. PERMANENT POSTED SPEED LIMIT OF 60km/h SHALL BE USED FOR ALL TAPER LENGTHS AND OTHER CRITERIA IN THE MTTC.
  6. SUBMIT ACCESSIBILITY PLAN IN ACCORDANCE WITH E20.
  7. CONTRACTOR SHALL BE RESPONSIBLE FOR THE SUPPLY, PLACEMENT, AND MAINTENANCE OF ALL TEMPORARY TRAFFIC CONTROL SIGNAGE IN ACCORDANCE WITH E5.
  8. CONTRACTOR SHALL BE RESPONSIBLE FOR ALL PERMITS AND LANE CLOSURE REQUESTS. ALL LANE CLOSURES REQUIRE APPROVAL OF THE TRAFFIC MANAGEMENT BRANCH.
  9. CONTRACTOR TO PROVIDE FLAGPERSONS IN ACCORDANCE WITH THE MTTC WHEN MOVING MATERIALS OR EQUIPMENT INTO OR OUT OF TRAFFIC.
  10. CONTRACTOR SHALL PROVIDE FLAGPERSONS DURING ALL ASPHALT PLACEMENT TO MINIMIZE IMPACT TO TRAFFIC.
  11. WHEN FLAGPERSONS ARE PRESENT SIGNAGE MUST BE PLACED IN ACCORDANCE WITH THE MTTC.
  12. WHEN FLAGPERSONS ARE NOT PRESENT THE SIGNAGE MUST BE REMOVED OR HIDDEN.
  13. PROVIDE TEMPORARY RAMPS & CROSSINGS WHERE DIRECTED BY CONTRACT ADMINISTRATOR AND IN ACCORDANCE WITH THE ACCESSIBILITY PLAN FOR PEDESTRIAN CROSSINGS WHILE PERFORMING WORK IN THE INTERSECTIONS AND APPROACHES.
  14. PROVIDE TEMPORARY WOODEN LANDINGS WITH ANTI-SLIP COATINGS FOR ALL TEMPORARY TRANSIT STOPS.
  15. RELOCATE TEMPORARY TRANSIT LANDINGS IN CONSULTATION WITH WINNIPEG TRANSIT AS REQUIRED TO PERFORM THE WORKS. MAINTAIN ACCESSIBLE PATHWAYS TO EACH RELOCATED TEMPORARY TRANSIT LANDING.
  16. INSTALL WARNING FLAGS IN ACCORDANCE WITH MTTC 3.07.04 ON THE FIRST WARNING SIGN IN EACH LANE DROP TAPER.



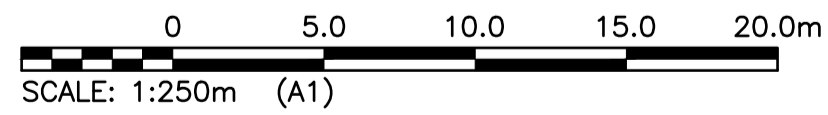
**ENGINEERS GEOSCIENTISTS MANITOBA**  
 Certificate of Authorization  
 KGS Group  
 No. 245

**PROPERTY LIMITS DELINEATION**  
 DELINEATION OF PROPERTY LIMITS AS SHOWN ON THIS DWG DOES NOT REPRESENT A "LEGAL SURVEY". KGS GROUP MAKES NO REPRESENTATION OR WARRANTY AS TO THE ACCURACY OF PROPERTY LIMITS DELINEATED ON THIS DWG, NOR ON THE DIMENSIONAL ACCURACY OF DWG FEATURES RELATIVE TO THOSE PROPERTY LIMITS.

**WARNING**  
 NOTIFY THE GAS COMPANY OF THE PROPOSED LOCATION OF EXCAVATION.  
 TAKE PRECAUTION TO AVOID DAMAGE TO GAS COMPANY INSTALLATIONS.  
 SEE PROVINCIAL REGULATION 210/72 FOR DETAILS.

**METRIC**  
 WHOLE NUMBERS INDICATE MILLIMETRES  
 DECIMALIZED NUMBERS INDICATE METRES

**SIGNAGE PLANS**  
 SCALE: 1:250



**ISSUED FOR TENDER**  
 NOT TO BE USED FOR CONSTRUCTION

300 LBS	LAND DRAINAGE SEWER	300 LBS	TEST HOLE	TEMP. TRAFFIC FLOW
250 WWS	WASTE WATER SEWER	250 WWS	GUY WIRE	TEMP. TRAFFIC SIGN
---	GAS	---	DETECTABLE TILE	TRAFFIC SIGNAL
---	HYDRO	---	BACK OF CURB	LIGHT STANDARD
---	M.T.S.	---	ASPHALT MILL & FILL	LEGEND-PLAN
---	ASPHALT OVERLAY	---	CONCRETE	PROPOSED
150 WM	WATERMAIN	150 WM	PVMT. REPAIR FABRIC	SIDEWALK
+	HYDRANT	+	LANDSCAPING	NORTH OR WEST GUTTER
+	VALVE	+	PROPERTY LINE	SOUTH OR EAST GUTTER
+	MANHOLE	+	GEODETIC BENCHMARK	Q. PROFILE
+	CATCH BASIN	+	ELEVATION	NORTH OR WEST P
+	CURB INLET	+	(231.334)	SOUTH OR EAST P
+	POLES	+		PROPOSED
+	LEGEND-PLAN	+		

**LOCATION APPROVED UNDERGROUND STRUCTURES**

SCALE: 1:250

LEGEND-PLAN

LEGEND-PROFILE

EXISTING

PROPOSED

NOTE:  
 LOCATION OF UNDERGROUND STRUCTURES AS SHOWN ARE BASED ON THE BEST INFORMATION AVAILABLE BUT NO GUARANTEE IS GIVEN THAT ALL EXISTING UTILITIES ARE SHOWN OR THAT THE GIVEN LOCATIONS ARE EXACT. CONFIRMATION OF EXISTENCE AND EXACT LOCATION OF ALL SERVICES MUST BE OBTAINED FROM THE INDIVIDUAL UTILITIES BEFORE PROCEEDING WITH CONSTRUCTION.

**KGS GROUP**

DESIGNED BY: GES  
 CHECKED BY: GEL  
 DRAWN BY: GES  
 APPROVED BY: CR

HOR. SCALE: 1:250  
 VERTICAL: 2021-05-01

ISSUED FOR TENDER: 22/01/17  
 NO. REVISIONS: 0

**THE CITY OF WINNIPEG**  
 PUBLIC WORKS DEPARTMENT  
 ENGINEERING DIVISION

PROJECT TITLE: KEEWATIN STREET NORTHBOUND REHABILITATION  
 INKSTER BOULEVARD TO ADSUM DRIVE  
 SIGNAGE PLAN: PHASE I - SHEET 2

SHEET 18 OF 22  
 COMPUTER FILE NAME: 21-0107-006  
 CITY DRAWING NUMBER: P-3551-17

P:\PROJECTS\2021\21-0107-006\DWG\MUNY\21-0107-006\_C-SIGNAGE\DWG01-17  
 PLOT 1:1 (A-1)