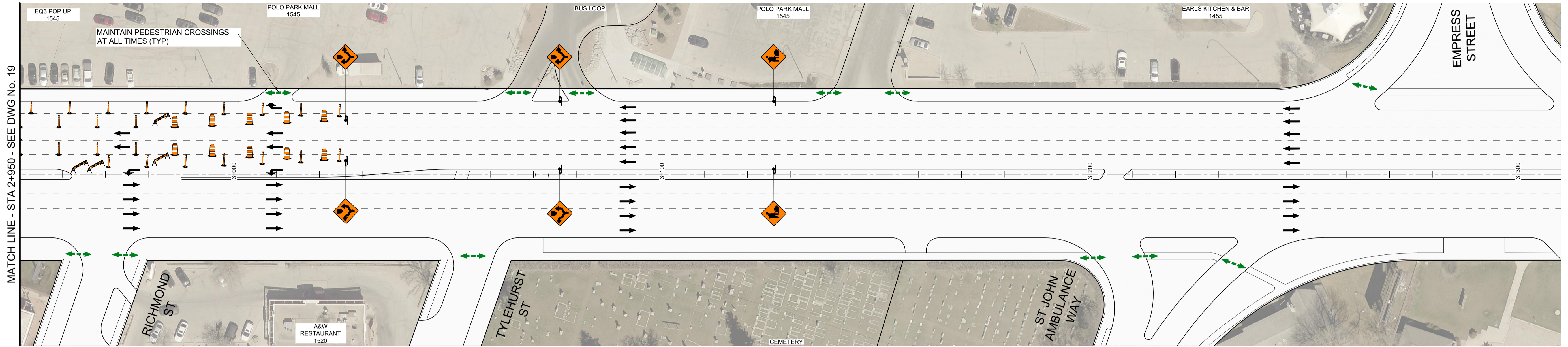
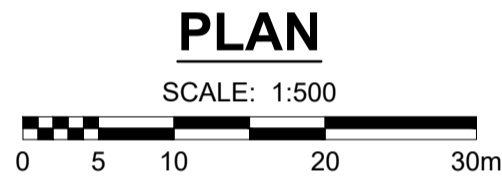


PORTAGE AVENUE



MATCH LINE - STA 2+950 - SEE DWG No. 19



**METRIC**  
WHOLE NUMBERS INDICATE MILLIMETRES  
DECIMALIZED NUMBERS INDICATE METRES

**LOCATION APPROVED UNDERGROUND STRUCTURES**

DATE \_\_\_\_\_  
COMMITTEE \_\_\_\_\_  
**NOTE:**  
LOCATION OF UNDERGROUND STRUCTURES AS SHOWN ARE BASED ON THE BEST INFORMATION AVAILABLE BUT NO GUARANTEE IS GIVEN THAT ALL EXISTING UTILITIES ARE SHOWN OR THAT THE GIVEN LOCATIONS ARE EXACT. CONFIRMATION OF EXISTENCE AND EXACT LOCATION OF ALL SERVICES MUST BE OBTAINED FROM THE INDIVIDUAL UTILITIES BEFORE PROCEEDING WITH CONSTRUCTION.

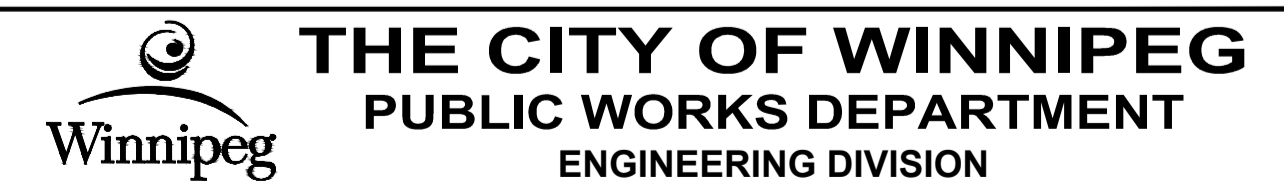
BM 38-004 ELEV 235.636 m	Tilt in 7.6 m Conc. pile under B.M. cover, 4 m N. of S.L. of Portage, 2.4 m W. of line of E.L. of Conway St. N. of Portage & 28.1 m N.E. of N.E. Cor. of Pumphouse S. of Portage	
B	ISSUED FOR TENDER	21/02/04 GFC
A	ISSUED FOR CLIENT REVIEW	20/12/21 GFC
No.	REVISIONS	YY/MM/DD BY DATE



DESIGNED BY	ASM	CHECKED BY	GFC
DRAWN BY	DML	APPROVED BY	RPB
HOR SCALE	1:500	RELEASED FOR CONSTRUCTION	
VERT SCALE			
DATE	20/12/15	DATE	

CONSULTANT FILE NAME  
2020287-STAGE 4.dwg

TENDER No. 8-2021



**2021 PAVEMENT RENEWALS PROJECT**  
**PORTAGE AVENUE MILL AND FILL**  
**MOORGATE STREET TO ST JAMES STREET**  
CONSTRUCTION STAGING  
**STAGE 4 - WESTBOUND HIGH SIDE**  
STA 2+950 TO EMPRESS ST

CITY DRAWING NUMBER	N/A
SHEET OF	20 OF 20
DRAWING NUMBER	20