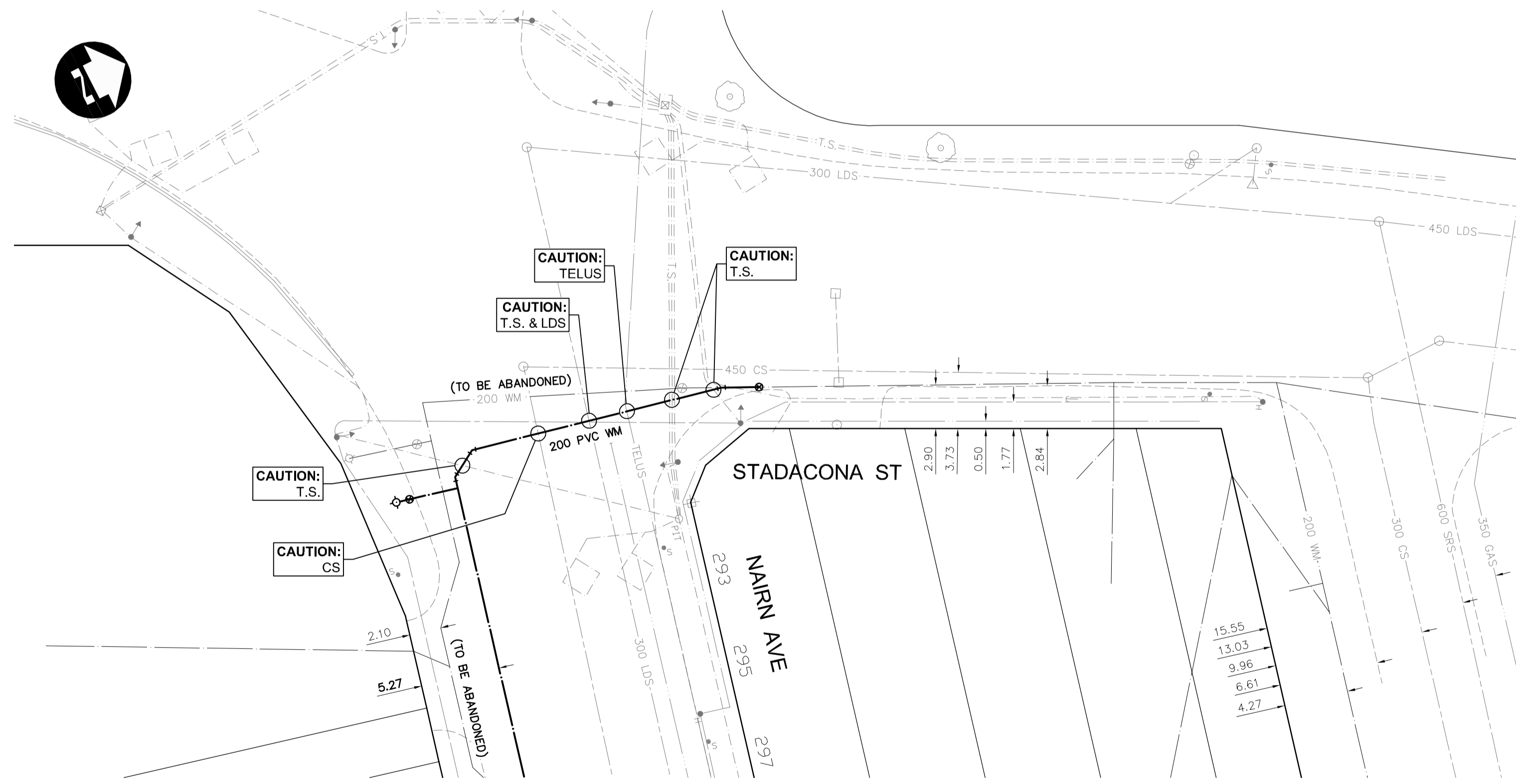


NOTE: CHAINAGES SHOWN ARE ALONG THE EAST PROPERTY LINE OF STADACONA ST



- SYMBOLS:**
- HYDRO MANHOLE
 - TELEPHONE MANHOLE
 - TRAFFIC SIGNAL SPLICE PIT
 - WATER VALVE
 - HYDRANT
 - CURB STOP
 - GAS VALVE
 - HYDRO POLE
 - HYDRO POLE WITH LIGHT
 - LIGHT STANDARD
 - TRAFFIC SIGNAL
 - SIGNAL CONTROL BOX
 - BELLMTS PEDESTAL
 - TREE
 - IRON PROPERTY BAR
 - HYDRO GUY ANCHOR

- WATERMAIN CONSTRUCTION NOTES:**
- EXPOSE EXISTING WATERMAIN & CONFIRM INVERTS PRIOR TO CONSTRUCTION.
 - LOCATION OF ALL SERVICES TO BE CONFIRMED IN THE FIELD.
 - INSTALL WATERMAIN BY TRENCHLESS METHODS.
 - TRENCHES AND EXCAVATIONS WITHIN 1.0 m OF A PAVED AREA INCLUDING SIDEWALKS SHALL BE CLASS 3 BACKFILL.
 - ALL MATERIALS SHALL CONFORM TO THE CITY OF WINNIPEG STANDARD CONSTRUCTION SPECIFICATIONS.
 - MINIMUM COVER TO TOP OF WATERMAIN SHALL BE 2.4 m.
 - REPLACE ALL EXISTING LEAD SERVICES FROM PROPOSED WATERMAIN TO PROPERTY LINE.
 - NOTIFY ALL AFFECTED RESIDENTS AND BUSINESSES 24 HOURS IN ADVANCE OF ANY WATER SHUTDOWNS OR DISRUPTION OF SERVICE.
 - WHERE CROSSING AN EXISTING COMBINED SEWER OR LAND DRAINAGE SEWER, THE WATERMAIN SHALL BE INSTALLED TO MAINTAIN A MINIMUM 0.5m VERTICAL CLEARANCE BETWEEN THE PIPES.

ABBREVIATIONS:

WWS	WASTE WATER SEWER
CS	COMBINED SEWER
LDS	LAND DRAINAGE SEWER
CL	CENTER LINE
GIS	GEOGRAPHIC INFORMATION SYSTEM
BM	BENCH MARK
TH	TEST HOLE
ELEV	ELEVATION
INV	INVERT
OBV	OBVERT
MIN	MINIMUM
MAX	MAXIMUM
SL	STREET LIGHTS
TS	TRAFFIC SIGNALS
ABAND	ABANDONED
BLDG	BUILDING
HSE	HOUSE
CRN	CORNER
OPP	OPPOSITE
WM	WATERMAIN
MH	MANHOLE
CB	CATCH BASIN
CI	CURB INLET
VERT	VERTICAL
HORZ	HORIZONTAL
TYP	TYPICAL
HYD	HYDRANT
EX	EXISTING
N	NORTH
E	EAST
S	SOUTH
W	WEST
WI	WITH
C/W	CONSTRUCTED WITH
CONC	CONCRETE
ASP	ASPHALT
AC	ASBESTOS CEMENT
VC	VITRIFIED CLAY
CI	CAST IRON
DI	DUCTILE IRON
PVC	POLYVINYL CHLORIDE
HDPE	HIGH DENSITY POLYETHYLENE
PCCP	PRESTRESSED CONCRETE CYLINDER PIPE

**PRELIMINARY ONLY
NOT FOR CONSTRUCTION**

**ES ENGINEERS
GEOSCIENTISTS
MANITOBA**
Certificate of Authorization
Dillon Consulting Limited (MB)
No. 1789 Date: 2022/03/09

C:\pwworking\directory\projects\2021_40\p\wms08082_212462-CU-CO-WM.dwg

150 WM	WATERMAIN	150 WM	150 WM	WATERMAIN	150 WM	WATERMAIN	150 WM	DESIGNED BY	SDG			THE CITY OF WINNIPEG PUBLIC WORKS DEPARTMENT 2021 REGIONAL STREET PROGRAM NAIRN AVENUE RECONSTRUCTION AND WATERMAIN RENEWAL STADACONA ST - WATERMAIN RENEWAL	CITY DRAWING NUMBER	P-3556-18												
300 LDS	LAND DRAINAGE SEWER	300 LDS	300 LDS	LAND DRAINAGE SEWER	300 LDS	LAND DRAINAGE SEWER	300 LDS	DRAWN BY	TJH				SHEET	18	OF	21										
250 WWS	WASTE WATER SEWER	250 WWS	250 WWS	WASTE WATER SEWER	250 WWS	WASTE WATER SEWER	250 WWS	CHECKED BY	TS				CONSULTANT DRAWING NUMBER													
HYDRO	HYDRO	HYDRO	HYDRO	HYDRANT	HYDRANT	HYDRANT	HYDRANT	APPROVED BY	TJP				21-2462													
BELLMTS	BELLMTS	BELLMTS	BELLMTS	TEE OR CROSS	TEE OR CROSS	TEE OR CROSS	TEE OR CROSS	HOR. SCALE	1:250	RELEASED FOR CONSTRUCTION	DATE															
100 GAS	GAS	100 GAS	100 GAS	COUPLING OR BEND	COUPLING OR BEND	COUPLING OR BEND	COUPLING OR BEND	VERTICAL	1:50	DATE																
T.S.	TRAFFIC SIGNALS	T.S.	T.S.	REDUCER	REDUCER	REDUCER	REDUCER	<table border="1"> <tr><td>0</td><td>ISSUED FOR TENDER</td><td>22/03/09</td><td>TJP</td><td></td><td></td></tr> <tr><td>NO.</td><td>REVISIONS</td><td>DATE</td><td>BY</td><td>DATE</td><td></td></tr> </table>							0	ISSUED FOR TENDER	22/03/09	TJP			NO.	REVISIONS	DATE	BY	DATE	
0	ISSUED FOR TENDER	22/03/09	TJP																							
NO.	REVISIONS	DATE	BY	DATE																						
S.L.	STREET LIGHTS	S.L.	S.L.	END OF PIPE	END OF PIPE	END OF PIPE	END OF PIPE																			
○	MANHOLE	●	●																							
□	CATCH BASIN	■	■																							
▽	CATCH PIT	▼	▼																							
EXISTING	LEGEND-PLAN	PROPOSED	EXISTING	LEGEND-PLAN	PROPOSED	EXISTING	LEGEND-PROFILE	PROPOSED																		