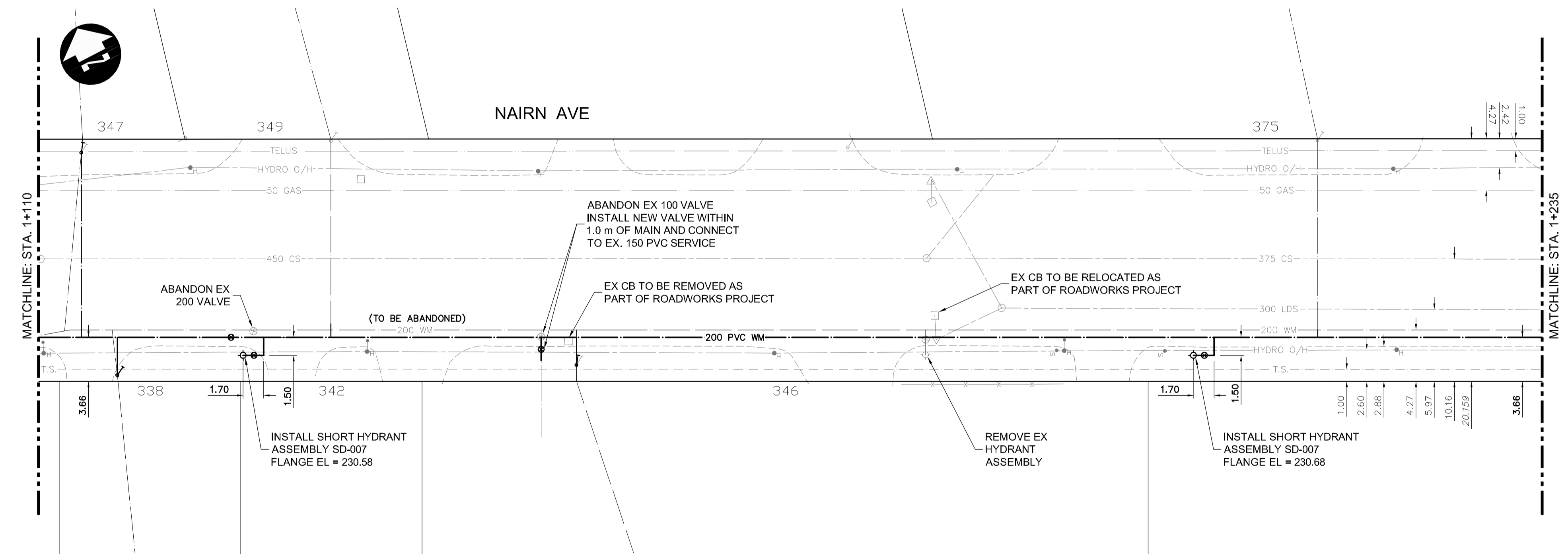


NOTE: CHAINAGES SHOWN ARE ALONG THE SOUTH PROPERTY LINE OF NAIRN AVENUE



- SYMBOLS:**
- HYDRO MANHOLE
  - TELEPHONE MANHOLE
  - TRAFFIC SIGNAL SPLICE PIT
  - WATER VALVE
  - HYDRANT
  - CURB STOP
  - GAS VALVE
  - HYDRO POLE
  - HYDRO POLE WITH LIGHT
  - LIGHT STANDARD
  - TRAFFIC SIGNAL
  - SIGNAL CONTROL BOX
  - BELLMTS PEDESTAL
  - IRON PROPERTY BAR
  - HYDRO GUY ANCHOR

- WATERMAIN CONSTRUCTION NOTES:**
- EXPOSE EXISTING WATERMAIN & CONFIRM INVERTS PRIOR TO CONSTRUCTION.
  - LOCATION OF ALL SERVICES TO BE CONFIRMED IN THE FIELD.
  - INSTALL WATERMAIN BY TRENCHLESS METHODS.
  - TRENCHES AND EXCAVATIONS WITHIN 1.0 m OF A PAVED AREA INCLUDING SIDEWALKS SHALL BE CLASS 3 BACKFILL.
  - ALL MATERIALS SHALL CONFORM TO THE CITY OF WINNIPEG STANDARD CONSTRUCTION SPECIFICATIONS.
  - MINIMUM COVER TO TOP OF WATERMAIN SHALL BE 2.4 m.
  - REPLACE ALL EXISTING LEAD SERVICES FROM PROPOSED WATERMAIN TO PROPERTY LINE.
  - NOTIFY ALL AFFECTED RESIDENTS AND BUSINESSES 24 HOURS IN ADVANCE OF ANY WATER SHUTDOWNS OR DISRUPTION OF SERVICE.
  - WHERE CROSSING AN EXISTING COMBINED SEWER OR LAND DRAINAGE SEWER, THE WATERMAIN SHALL BE INSTALLED TO MAINTAIN A MINIMUM 0.5m VERTICAL CLEARANCE BETWEEN THE PIPES.

- ABBREVIATIONS:**
- WWS WASTE WATER SEWER
  - CS COMBINED SEWER
  - LDS LAND DRAINAGE SEWER
  - CL CENTER LINE
  - GIS GEOGRAPHIC INFORMATION SYSTEM
  - BM BENCH MARK
  - TH TEST HOLE
  - ELEV ELEVATION
  - INV INVERT
  - OBV OBVERT
  - MIN MINIMUM
  - MAX MAXIMUM
  - SL STREET LIGHTS
  - TS TRAFFIC SIGNALS
  - ABAND ABANDONED
  - BLDG BUILDING
  - HSE HOUSE
  - CRN CORNER
  - OPP OPPOSITE
  - WM WATERMAIN
  - MH MANHOLE
  - CB CATCH BASIN
  - CI CURB INLET
  - VERT VERTICAL
  - HORZ HORIZONTAL
  - TYP TYPICAL
  - HYD HYDRANT
  - EX EXISTING
  - N NORTH
  - E EAST
  - S SOUTH
  - W WEST
  - WI WITH
  - C/W CONSTRUCTED WITH
  - CONC CONCRETE
  - ASP ASPHALT
  - AC ASBESTOS CEMENT
  - VC VITRIFIED CLAY
  - CI CAST IRON
  - DI DUCTILE IRON
  - PVC POLYVINYL CHLORIDE
  - HDPE HIGH DENSITY POLYETHYLENE
  - PCCP PRESTRESSED CONCRETE CYLINDER PIPE

WATER SERVICE INFORMATION					
ADDRESS	SIZE (mm) MATERIAL (STREET)	SIZE (mm) MATERIAL (PROP.)	SHORT & LONG MEASUREMENTS	CORP. LOCATION	REMARKS
338 NAIRN AVE EMPTY LOT	12 LEAD	12 LEAD	3' E W HL 2' ST LINE	452 EEL STADACONA	RENEW SERVICE
346 NAIRN AVE COMMERCIAL	100 CI	100 CI			RENEW SERVICE
348 NAIRN AVE COMMERCIAL	100 PVC	150 CI			RECONNECT SPRINKLER SERVICE C/W NEW VALVE 1.0m FROM MAIN
347 NAIRN AVE COMMERCIAL	20 LEAD	12 LEAD	28' WEL OF BLDG 46" OUT FR BLDG	4 E OF S/C	RENEW SERVICE
349 NAIRN AVE COMMERCIAL	25 CU	25 LEAD	25 WEL BLDG 16.6 FR BLDG FRT	OPP S/C	RECONNECT SERVICE
375 NAIRN AVE COMMERCIAL	25 CU	25 CU	32.0m EWLL	OPP S/C	RECONNECT SERVICE

**PRELIMINARY ONLY  
NOT FOR CONSTRUCTION**

**ES ENGINEERS  
GEOSCIENTISTS  
MANITOBA**  
Certificate of Authorization  
**Dillon Consulting Limited (MB)**  
No. 1789 Date: 2022/03/09

C:\pwworking\directory\projects\2021\_400\p\mbs0082\_212462-CU-CON-WM.dwg

EXISTING	LEGEND-PLAN	PROPOSED	EXISTING	LEGEND-PLAN	PROPOSED	EXISTING	LEGEND-PROFILE	PROPOSED
○	WATERMAIN	○	○	WATERMAIN	○	○	WATERMAIN	○
○	LAND DRAINAGE SEWER	○	○	LAND DRAINAGE SEWER	○	○	LAND DRAINAGE SEWER	○
○	WASTE WATER SEWER	○	○	WASTE WATER SEWER	○	○	WASTE WATER SEWER	○
○	HYDRO	○	○	HYDRO	○	○	HYDRO	○
○	BELLMTS	○	○	BELLMTS	○	○	BELLMTS	○
○	GAS	○	○	GAS	○	○	GAS	○
○	TRAFFIC SIGNALS	○	○	TRAFFIC SIGNALS	○	○	TRAFFIC SIGNALS	○
○	STREET LIGHTS	○	○	STREET LIGHTS	○	○	STREET LIGHTS	○
○	MANHOLE	○	○	MANHOLE	○	○	MANHOLE	○
○	CATCH BASIN	○	○	CATCH BASIN	○	○	CATCH BASIN	○
○	CATCH PIT	○	○	CATCH PIT	○	○	CATCH PIT	○
○	CURB STOP	○	○	CURB STOP	○	○	CURB STOP	○
○	HYDRANT	○	○	HYDRANT	○	○	HYDRANT	○
○	VALVE	○	○	VALVE	○	○	VALVE	○
○	BEND	○	○	BEND	○	○	BEND	○
○	REDUCER	○	○	REDUCER	○	○	REDUCER	○
○	COUPLING	○	○	COUPLING	○	○	COUPLING	○
○	PLUG	○	○	PLUG	○	○	PLUG	○
○	CROSS	○	○	CROSS	○	○	CROSS	○
○	TEE	○	○	TEE	○	○	TEE	○
○	VERTICAL BEND	○	○	VERTICAL BEND	○	○	VERTICAL BEND	○
○	JUNCTION	○	○	JUNCTION	○	○	JUNCTION	○

**UNDERGROUND STRUCTURES**

SUPV. U/G STRUCTURES DATE

LOCATION OF UNDERGROUND STRUCTURES AS SHOWN ARE BASED ON THE BEST INFORMATION AVAILABLE, BUT NO GUARANTEE IS GIVEN THAT ALL EXISTING UTILITIES ARE SHOWN OR THAT THE GIVEN LOCATIONS ARE EXACT. CONFIRMATION OF EXISTENCE AND EXACT LOCATION OF ALL SERVICES MUST BE OBTAINED FROM THE INDIVIDUAL UTILITIES BEFORE PROCEEDING WITH CONSTRUCTION.

B.M. ELEV.	NO.	REVISIONS	DATE	BY
	0	ISSUED FOR TENDER	22/03/09	TJP

DESIGNED BY	SDG
DRAWN BY	TJH
CHECKED BY	TS
APPROVED BY	TJP
HOR. SCALE	1:250
VERTICAL	1:50

ENGINEER'S SEAL

PROVINCE OF MANITOBA  
REGISTERED PROFESSIONAL ENGINEER  
S.D. GOLDSTINE  
2022/03/09  
Member 42343

CONSULTANT PROJECT NUMBER  
**21-2462**

**THE CITY OF WINNIPEG**  
PUBLIC WORKS DEPARTMENT

**2021 REGIONAL STREET PROGRAM**  
NAIRN AVENUE RECONSTRUCTION AND  
WATERMAIN RENEWAL

NAIRN AVE - WATERMAIN RENEWAL  
(STA. 1+110 TO 1+235)

CITY DRAWING NUMBER  
P-3556-20

SHEET  
20 OF 21

CONSULTANT DRAWING NUMBER