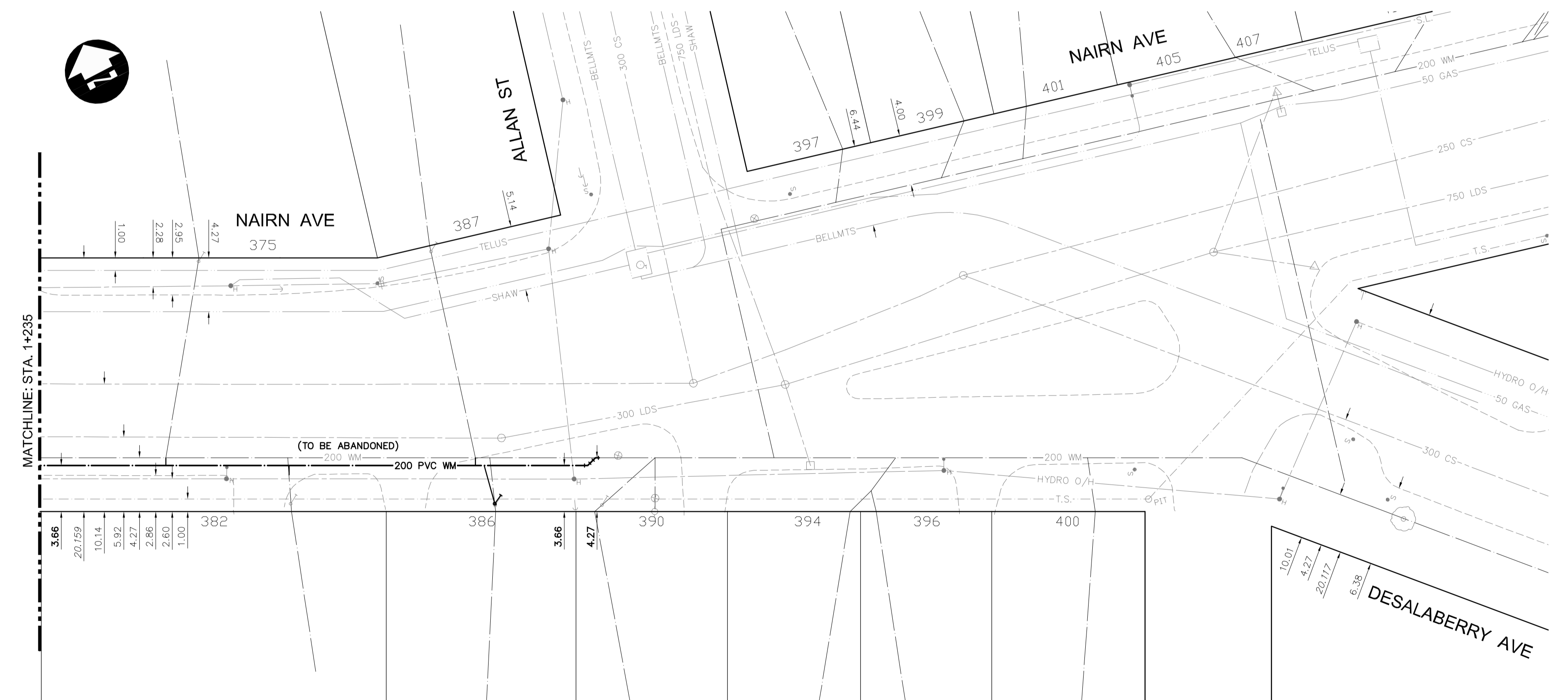


NOTE: CHAINAGES SHOWN ARE ALONG THE SOUTH PROPERTY LINE OF NAIRN AVENUE



- SYMBOLS:**
- HYDRO MANHOLE
 - TELEPHONE MANHOLE
 - TRAFFIC SIGNAL SPLICE PIT
 - WATER VALVE
 - HYDRANT
 - CURB STOP
 - GAS VALVE
 - HYDRO POLE
 - HYDRO POLE WITH LIGHT
 - LIGHT STANDARD
 - TRAFFIC SIGNAL
 - SIGNAL CONTROL BOX
 - BELLMTS PEDESTAL
 - TREE
 - IRON PROPERTY BAR
 - HYDRO GUY ANCHOR

- WATERMAIN CONSTRUCTION NOTES:**
- EXPOSE EXISTING WATERMAIN & CONFIRM INVERTS PRIOR TO CONSTRUCTION.
 - LOCATION OF ALL SERVICES TO BE CONFIRMED IN THE FIELD.
 - INSTALL WATERMAIN BY TRENCHLESS METHODS.
 - TRENCHES AND EXCAVATIONS WITHIN 1.0 m OF A PAVED AREA INCLUDING SIDEWALKS SHALL BE CLASS 3 BACKFILL.
 - ALL MATERIALS SHALL CONFORM TO THE CITY OF WINNIPEG STANDARD CONSTRUCTION SPECIFICATIONS.
 - MINIMUM COVER TO TOP OF WATERMAIN SHALL BE 2.4 m.
 - REPLACE ALL EXISTING LEAD SERVICES FROM PROPOSED WATERMAIN TO PROPERTY LINE.
 - NOTIFY ALL AFFECTED RESIDENTS AND BUSINESSES 24 HOURS IN ADVANCE OF ANY WATER SHUTDOWNS OR DISRUPTION OF SERVICE.
 - WHERE CROSSING AN EXISTING COMBINED SEWER OR LAND DRAINAGE SEWER, THE WATERMAIN SHALL BE INSTALLED TO MAINTAIN A MINIMUM 0.5m VERTICAL CLEARANCE BETWEEN THE PIPES.

- ABBREVIATIONS:**
- WWS WASTE WATER SEWER
 - CS COMBINED SEWER
 - LDS LAND DRAINAGE SEWER
 - CL CENTER LINE
 - GIS GEOGRAPHIC INFORMATION SYSTEM
 - BM BENCH MARK
 - TH TEST HOLE
 - ELEV ELEVATION
 - INV INVERT
 - OBV OBVERT
 - MIN MINIMUM
 - MAX MAXIMUM
 - SL STREET LIGHTS
 - TS TRAFFIC SIGNALS
 - ABAND ABANDONED
 - BLDG BUILDING
 - HSE HOUSE
 - CRN CORNER
 - OPP OPPOSITE
 - WM WATERMAIN
 - MH MANHOLE
 - CB CATCH BASIN
 - CI CURB INLET
 - VERT VERTICAL
 - HORZ HORIZONTAL
 - TYP TYPICAL
 - HYD HYDRANT
 - EX EXISTING
 - N NORTH
 - E EAST
 - S SOUTH
 - W WEST
 - WI WITH
 - C/W CONSTRUCTED WITH
 - CONC CONCRETE
 - ASP ASPHALT
 - AC ASBESTOS CEMENT
 - VC VITRIFIED CLAY
 - CI CAST IRON
 - DI DUCTILE IRON
 - PVC POLYVINYL CHLORIDE
 - HDPE HIGH DENSITY POLYETHYLENE
 - PCCP PRESTRESSED CONCRETE CYLINDER PIPE

WATER SERVICE INFORMATION					
ADDRESS	SIZE (mm) MATERIAL (STREET)	SIZE (mm) MATERIAL (PROP.)	SHORT & LONG MEASUREMENTS	CORP. LOCATION	REMARKS
382 NAIRN AVE RESIDENTIAL	20 CU	20 CU	5.5 EWL HOUSE 89 WWL ALLEN	1 W S/C	RECONNECT SERVICE
386 NAIRN AVE RESIDENTIAL	20 LEAD	20 LEAD	15' E WIL 20' 6" OUT	1.5 N S/C	RENEW SERVICE
387 NAIRN AVE RESIDENTIAL	20 CU	12 CU	14 WEL HOUSE 34 WWL ALLEN	6 W S/C	RECONNECT SERVICE

**PRELIMINARY ONLY
NOT FOR CONSTRUCTION**

**ES ENGINEERS
GEOSCIENTISTS
MANITOBA**
Certificate of Authorization
Dillon Consulting Limited (MB)
No. 1789 Date: 2022/03/09

C:\pwworking\directory\projects\2021_40\p\wms08082_212462-CU-CO-N-WM.dwg

EXISTING	LEGEND-PLAN	PROPOSED	EXISTING	LEGEND-PLAN	PROPOSED	EXISTING	LEGEND-PROFILE	PROPOSED
150 WM	WATERMAIN	150 WM	150 WM	WATERMAIN	150 WM	300 LDS	LAND DRAINAGE SEWER	300 LDS
300 LDS	LAND DRAINAGE SEWER	300 LDS	250 WWS	WASTE WATER SEWER	250 WWS	HYDRO	HYDRO	HYDRO
250 WWS	WASTE WATER SEWER	250 WWS	BELLMTS	BELLMTS	BELLMTS	100 GAS	GAS	100 GAS
HYDRO	HYDRO	HYDRO	T.S.	TRAFFIC SIGNALS	T.S.	S.L.	STREET LIGHTS	S.L.
BELLMTS	BELLMTS	BELLMTS	○	MANHOLE	○	□	CATCH BASIN	□
100 GAS	GAS	100 GAS	▽	CATCH PIT	▽			
T.S.	TRAFFIC SIGNALS	T.S.						
S.L.	STREET LIGHTS	S.L.						
○	MANHOLE	○						
□	CATCH BASIN	□						
▽	CATCH PIT	▽						
EXISTING	LEGEND-PLAN	PROPOSED	EXISTING	LEGEND-PLAN	PROPOSED	EXISTING	LEGEND-PROFILE	PROPOSED

UNDERGROUND STRUCTURES

SUPV. U/G STRUCTURES DATE

LOCATION OF UNDERGROUND STRUCTURES AS SHOWN ARE BASED ON THE BEST INFORMATION AVAILABLE, BUT NO GUARANTEE IS GIVEN THAT ALL EXISTING UTILITIES ARE SHOWN OR THAT THE GIVEN LOCATIONS ARE EXACT. CONFIRMATION OF EXISTENCE AND EXACT LOCATION OF ALL SERVICES MUST BE OBTAINED FROM THE INDIVIDUAL UTILITIES BEFORE PROCEEDING WITH CONSTRUCTION.

B.M. ELEV.	DESIGNED BY	DRAWN BY	CHECKED BY	APPROVED BY	HOR. SCALE	VERTICAL SCALE
	SDG	TJH	TS	TJP	1:250	1:50

NO.	ISSUED FOR TENDER	DATE	BY
0	ISSUED FOR TENDER	22/03/09	TJP

DILLON CONSULTING

RELEASED FOR CONSTRUCTION

DATE

ENGINEER'S SEAL

PROVINCE OF MANITOBA

REGISTERED PROFESSIONAL ENGINEER

S.D. GOLDSTINE
2022/03/09
Member 42343

CONSULTANT PROJECT NUMBER
21-2462

THE CITY OF WINNIPEG
PUBLIC WORKS DEPARTMENT

2021 REGIONAL STREET PROGRAM
NAIRN AVENUE RECONSTRUCTION AND WATERMAIN RENEWAL

NAIRN AVE - WATERMAIN RENEWAL (STA. 1+235 TO END)

CITY DRAWING NUMBER
P-3556-21

SHEET **21** OF **21**

CONSULTANT DRAWING NUMBER