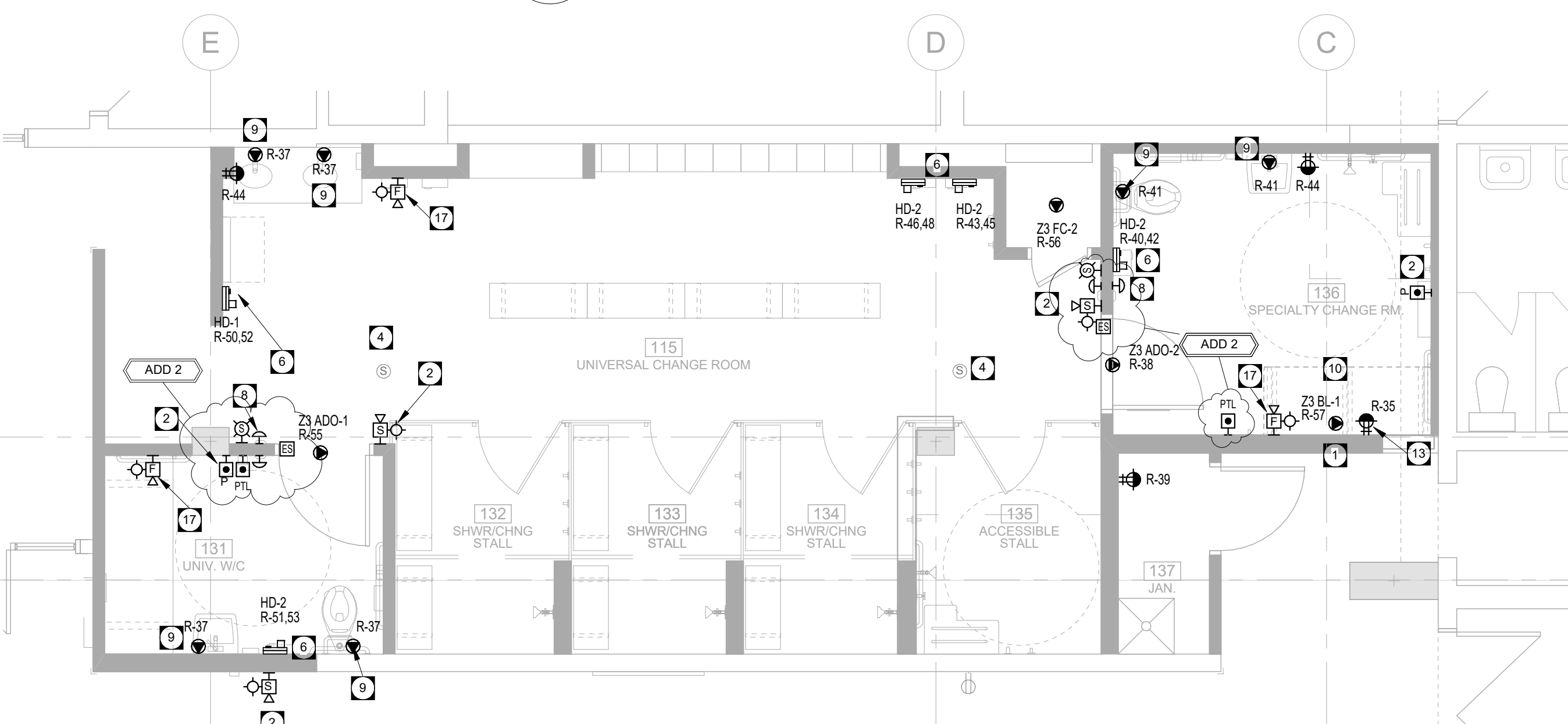
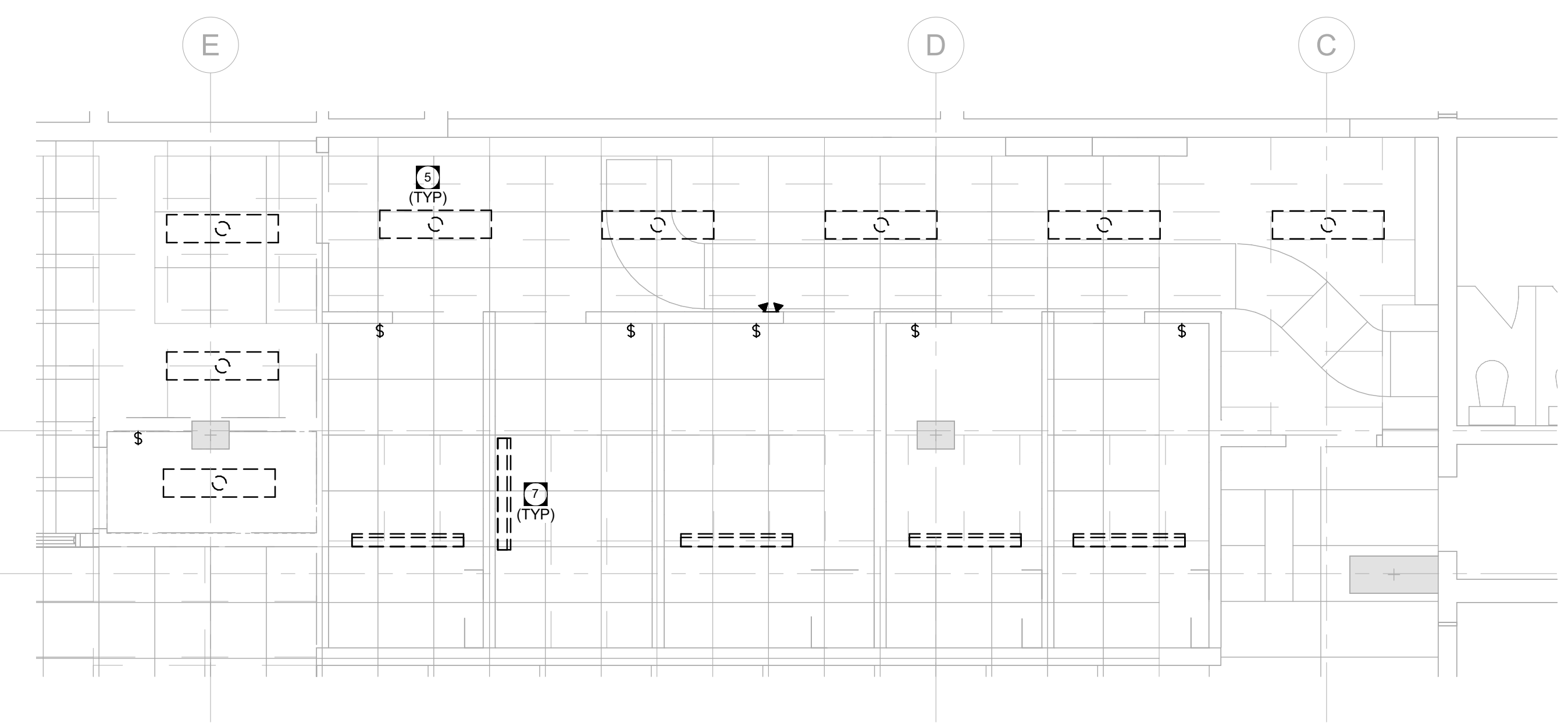


1 POWER DEMOLITION
E2.5-R1 SCALE: 1/4" = 1'-0"



2 POWER RENOVATION
E2.5-R1 SCALE: 1/4" = 1'-0"



3 LIGHTING DEMOLITION
E2.5-R1 SCALE: 1/4" = 1'-0"

EQUIPMENT CONNECTION SCHEDULE													
NO.	DESCRIPTION	LOAD AMPS	VOLT	PH.	BKR	CIRCUIT	CONDUIT & WIRE SIZE	STARTER		CONTROL DEVICE		DISCONNECT	
								COMPONENT	FURN. INST. WIRED	COMPONENT	FURN. INST. WIRED	COMPONENT	FURN. INST. WIRED
Z3 ADD-1	AUTOMATIC DOOR OPERATOR	5 A	120 V	1	15A/1P	R-55	1 SET 21(3/4") 2-#12R90 #12 BOND	---	---	PB PTL	DIV. 08 DIV. 08 DIV. 26	NFS	DIV. 26 DIV. 26 DIV. 26
Z3 ADD-2	AUTOMATIC DOOR OPERATOR	5 A	120 V	1	15A/1P	R-38	1 SET 21(3/4") 2-#12R90 #12 BOND	---	---	PB PTL	DIV. 08 DIV. 08 DIV. 26	NFS	DIV. 26 DIV. 26 DIV. 26
Z3 BL-1	BIARIATRIC LIFT	5 A	120 V	1	15A/1P	R-67	1 SET 21(3/4") 2-#12R90 #12 BOND	---	---	---	---	5-16R RCPT	DIV. 26 DIV. 26 DIV. 26
Z3 CU-2	CONDENSING UNIT	15 A	208 V	3	25A/3P	R-32,34,36	1 SET 21(3/4") 3-#10R90 #12 BOND	PKG	DIV. 23	LOW VOLTAGE TC	DIV. 23 DIV. 23 DIV. 23	NFS	DIV. 26 DIV. 26 DIV. 26
Z3 FC-2	FAN COIL	11.5 A	120 V	1	25A/1P	R-56	1 SET 21(3/4") 2-#10R90 #12 BOND	PKG	DIV. 23	LOW VOLTAGE TC	DIV. 23 DIV. 23 DIV. 23	NFS	DIV. 26 DIV. 26 DIV. 26

ABBREVIATIONS:
 PKG PACKAGED (STARTER) KS KEY SWITCH RCPT RECEPTACLE (TYPE DENOTED)
 PB PUSHBUTTON NFS NON-FUSED DISCONNECT SWITCH PTL PUSH-TO-LOCK SYSTEM

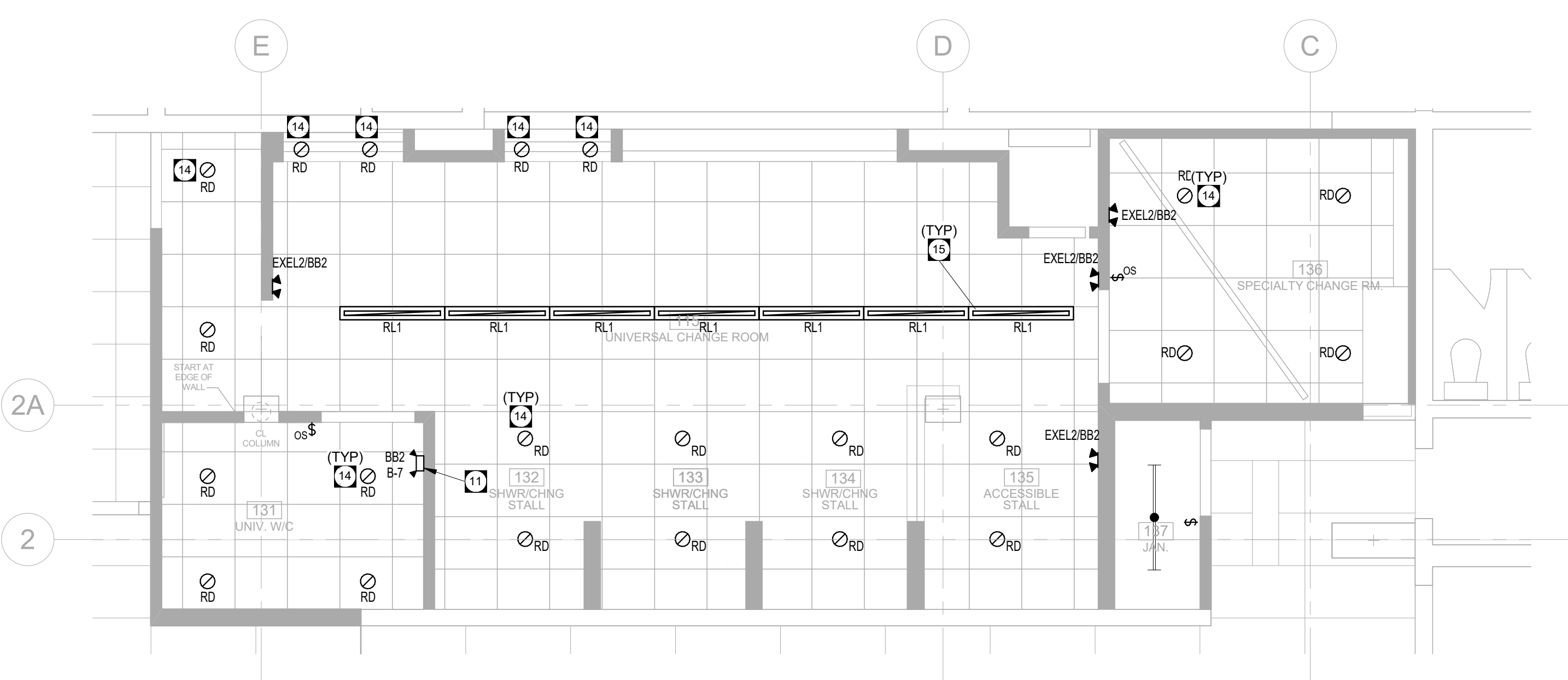
GENERAL NOTES:
 A. CIRCUITING IS REPRESENTATIONAL ONLY. CONFIRM CIRCUITING ARRANGEMENTS ON SITE WITH EXISTING CONDITIONS.
 B. WIRING BETWEEN VSDS AND MOTORS SHALL BE RATED FOR VSD USE.

- GENERAL NOTES**
- A. ALL NEW WIRING SHALL BE CONCEALED WHERE POSSIBLE. UTILIZE CRAWLSPACE AND/OR ACCESSIBLE CEILING SPACE TO RUN NEW WIRING AS REQUIRED AND FISH INTO WALLS/MILLOWORK.
 - B. WHERE EXISTING WALLS ARE TO BE OPENED FOR INSTALLATION OF NEW WIRING, COORDINATE WITH GENERAL CONTRACTOR ROUTING OF SAME. ARRANGE AND PAY FOR ALL CUTTING/REPAIR/PATCHING AS REQUIRED.
 - C. WHERE BRANCH CIRCUIT BREAKERS ARE REMOVED, PROVIDE FILLER PLATES FOR BREAKER SPACES.
 - D. CIRCUIT BREAKERS SHALL MATCH EXISTING. CONFIRM SHORT CIRCUIT RATING AND TYPE ON SITE, PRIOR TO FINALIZING PRICING.
 - E. UTILIZE SPARE FREED UP CIRCUITS FROM DEMOLITION AS REQUIRED TO ACCOMMODATE THE ADDITIONAL CIRCUITING REQUIREMENTS IN THE RENOVATION.
 - F. PROVIDE NEW TYPEWRITTEN PANEL DIRECTORIES TO ACCOMMODATE UPDATED CIRCUITING. NEW BREAKERS IN DISTRIBUTION PANELS SHALL BE LABELLED USING LAMACODS.
 - G. RELOCATE EXISTING LIGHT SWITCHES AS REQUIRED TO ACCOMMODATE NEW DOOR CONFIGURATIONS.
 - H. ALL EXISTING LUMINAIRES BEING RETROFITTED WITH NEW LAMPS AND BALLASTS SHALL HAVE THE LENSES AND THE INTERIOR OF THE LUMINAIRE CLEANED. BROKEN OR YELLOWED LENSES SHALL BE REPLACED.
 - I. WHERE NEW TOGGLE SWITCHES, OR DIMMER CONTROLS ARE ADJACENT EACH OTHER, PROVIDE GANGED SWITCHING TO ACCOMMODATE TOTAL NUMBER OF SWITCHES, UNLESS NOTED OTHERWISE.
 - J. ALL RECESSED LIGHTING FIXTURES IN LAY-IN CEILINGS SHALL BE INSTALLED WITH 6' LONG FLEXIBLE METAL CONDUIT.
 - K. ALL MOUNTING HEIGHTS FOR LUMINAIRES ARE TO THE BOTTOM OF THE LUMINAIRE UNLESS NOTED OTHERWISE.
 - L. REFER TO ARCHITECTURAL ELEVATIONS FOR MOUNTING HEIGHTS OF EXTERIOR OR INTERIOR LUMINAIRES.
 - M. EMERGENCY LIGHTING DOUBLE REMOTE HEADS THIS DRAWING/AREA SHALL BE TYPE MOMP-NX UNLESS NOTED OTHERWISE.
 - N. EMERGENCY LIGHTING DOUBLE REMOTE HEADS THIS DRAWING/AREA SHALL BE FED FROM BATTERY UNIT BB2 UNLESS NOTED OTHERWISE.
 - O. FINAL CONNECTION TO ALL MECHANICAL EQUIPMENT SHALL BE FLEXIBLE. CONFIRM FINAL CIRCUIT BREAKER AND WIRE SIZE WITH MECHANICAL EQUIPMENT SHOP DRAWINGS. ADJUST CIRCUIT BREAKER AND WIRE SIZE AS REQUIRED WITHOUT ADDITIONAL COST TO OWNER.
 - P. ELECTRICAL CONTRACTOR SHALL COORDINATE QUANTITIES AND LOCATIONS OF ALL SWITCHES AND VALVES REQUIRING WIRING WITH SPRINKLER CONTRACTOR.
 - Q. PROVIDE RE-VERIFICATION OF FIRE ALARM SYSTEM FOR ALL NEW AND MODIFIED DEVICES.
 - R. ALL WIRING METHODS IN ZONE 3 SHALL BE RATED FOR WET LOCATION.
 - S. PANEL B IS LOCATED IN NETWORK ROOM 112.
 - T. PANEL R IS LOCATED IN THE BASEMENT ELECTRICAL ROOM.
 - U. UNLESS NOTED OTHERWISE, ALL NEW DEVICES REQUIRING NEW POWER CONNECTIONS, SHALL BE CIRCUITED TO 15A CIRCUIT BREAKERS. ALL NEW RECEPTACLES OF CSA TYPE 5-20R (T-SLOT) SHALL BE CIRCUITED TO 20A/1P CIRCUIT BREAKERS. UTILIZE EXISTING SPARE OR FREED UP BREAKERS AS AVAILABLE, PROVIDE NEW AS REQUIRED.

- KEY NOTES**
1. WIRE AND CONNECT NEW CEILING BIARIATRIC LIFT. JUNCTION BOX TO BE MOUNTED IN CEILING SPACE.
 2. PROVIDE NEW BLUE PUSHBUTTONS WITH WEATHER COVER (STI SS-2411E OR APPROVED EQUAL) AND BLUE STROBE NOTIFICATION (STI SS-2411E OR APPROVED EQUAL). TIE INTO EXISTING INTRUSION ALARM SYSTEM. EXPAND EXISTING SYSTEM TO ACCOMMODATE EACH PUSHBUTTON PANIC ALARM SHALL BE WIRED AS A SEPARATE ZONE. STROBE DEVICES OUTSIDE EACH WASHROOM SHALL ANNUNCIATE SEPARATELY FOR EACH PANIC ALARM. STROBE DEVICE OUTSIDE CHANGE ROOM AREA SHALL ANNUNCIATE COMMONLY FOR ALL PANIC ALARMS.
 3. REMOVE AND REINSTALL EXISTING INTERCOM SPEAKER. REFER TO RENOVATION LAYOUT FOR NEW LOCATION.
 4. REINSTALL INTERCOM SPEAKER.
 5. DEMOLISH EXISTING RECESSED FLUORESCENT TROFFERS AND RETURN TO OWNER. RETAIN EXISTING CIRCUITS FOR REUSE.
 6. INSTALL HAND DRYERS AS SUPPLIED BY ARCHITECTURAL. REFER TO ARCHITECTURAL DRAWINGS FOR MOUNTING HEIGHTS. WIRE AND CONNECT AS INDICATED TO 15A/2P CIRCUIT BREAKERS. UTILIZE SPARE BREAKERS AS AVAILABLE, PROVIDE NEW AS REQUIRED.
 7. DEMOLISH EXISTING VAPOUR TIGHT FLUORESCENT LIGHTS AND RETURN TO OWNER. RETAIN EXISTING CIRCUITS FOR REUSE.
 8. INSTALL AND CONNECT BARRIER FREE OPERATOR COMPLETE WITH VERTICAL BAR ACTUATORS, COMPLETE WITH PUSH-TO-LOCK, AND OCCUPIED-WHEN-LIT EQUIPMENT COMPLETE WITH ASSOCIATED CONTROLLER AND POWER SUPPLY AS FURNISHED BY DOOR HARDWARE. REFER TO ARCHITECTURAL FOR EXACT ACTUATOR AND INDICATOR LOCATIONS AND ELEVATIONS.
 9. WIRE AND CONNECT 24 VAC TRANSFORMERS. SINKS AND LAVATORIES: COORDINATE WITH MECHANICAL FOR INSTALLATION.
 10. ADJUST CONDUIT IN CEILING SPACE AS REQUIRED TO ALLOW INSTALLATION OF BIARIATRIC LIFT.
 11. PROVIDE 100W BATTERY BANK. BATTERY BANK TO BE LUMACELL RG12S SERIES OR APPROVED EQUAL COMPLETE WITH TWIN HEADS. WIRE AND CONNECT TO EXISTING 120V/20R 3PH 4W PANEL B LOCATED IN THE BASEMENT ELECTRICAL ROOM. COORDINATE LOCATION WITH MECHANICAL PRIOR TO INSTALLATION.
 12. DEDICATED RECEPTACLE FOR MOTORISED CHANGE BENCH. CONFIRM LOCATION WITH CONTRACT ADMINISTRATOR PRIOR TO INSTALLATION.
 13. FIXTURES TO BE RECESSED IN ACT. WIRE AND CONNECT TO EXISTING LIGHTING CIRCUITS. PROVIDE LUMENWERX AE4RR-TRM-SW-OF-120-14W-D1.
 14. FIXTURES TO BE RECESSED IN ACT. PROVIDE CONTINUOUS RUN. WIRE AND CONNECT TO EXISTING LIGHTING AND CONTROL CIRCUITS. PROVIDE LUMENWERX VIAWETR-PYC-HLO-LED-80-750-35-4FT-120-D1-1-TF-W.
 15. REROUTE EXISTING WIRE AND CONDUIT IN THIS LOCATION AS REQUIRED TO ACCOMMODATE RENOVATION.
 16. WIRE AND CONNECT FIRE ALARM HORN/STROBE DEVICE TO EXISTING SIMPLEX 4100U FIRE ALARM PANEL LOCATED IN MAIN ENTRANCE.
 - 17.

1	22-05-26	Issued for Addendum 2
0	22-04-26	Issued for Construction
No.	DATE:	REVISION / ISSUANCE

Architect



4 LIGHTING RENOVATION
E2.5-R1 SCALE: 1/4" = 1'-0"