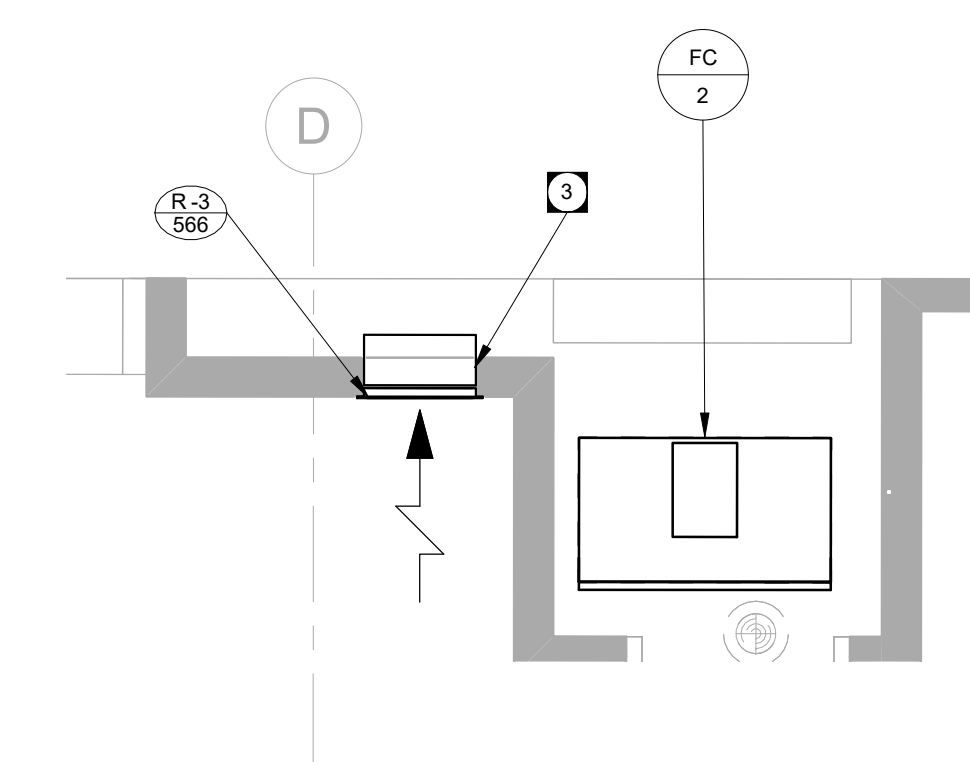


HVAC GENERAL NOTES

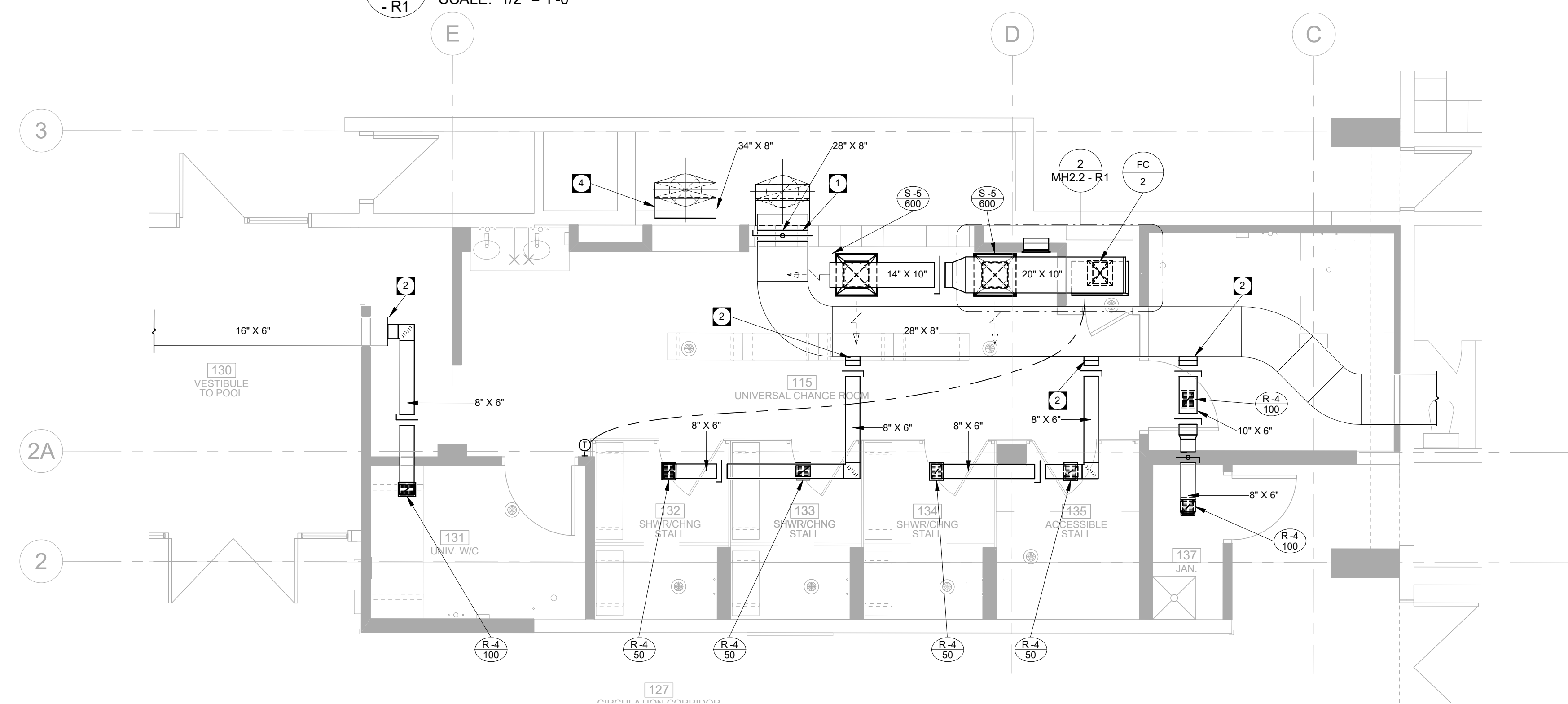
- A. FIRESTOP ALL MECHANICAL PENETRATIONS THROUGH FIRE-RATED FLOOR AND WALL ASSEMBLIES. SEE ARCHITECTURAL DRAWINGS FOR LOCATION AND TYPE OF RATINGS.
- B. DUCT TRANSITIONS MAY NOT BE SHOWN IN DETAIL. ON PLAN, REFER TO DETAILS SHEETS AND SMACNA - HVAC DUCT CONSTRUCTION STANDARDS FOR REQUIRED DUCT TRANSITIONS AND FITTINGS. ALL DUCT TAPS TO BRANCH DUCTS SHALL HAVE 45 DEGREE ENTRY FITTINGS.
- C. INSTALL FIRE DAMPERS ON ALL DUCTS PENETRATING FIRE RATED WALL ASSEMBLIES, COMPLETE WITH ACCESS DOORS, SEE STANDARD DETAIL. REFER TO ARCHITECTURAL DRAWING FOR WALL TYPES.
- D. ALL DUCTWORK SHALL BE SEALED AND INSULATED ACCORDING TO THE MECHANICAL SPECIFICATIONS.
- E. COORDINATE FINAL THERMOSTAT INSTALLATION HEIGHT AND DISTANCE FROM DOOR WITH ARCHITECT.
- F. REFER TO SPECIFICATION FOR ADDITIONAL STANDARD INSTALLATION DETAILS.
- G. DUCT INSULATION MATERIALS SHALL MEET SMOKE AND FLAME SPREAD REQUIREMENTS FOR PLENUM INSULATION.
- H. DUCT INSULATION SHALL FOLLOW THE SCHEDULES IN THE SPECIFICATION AS A MINIMUM REQUIREMENT. THESE REQUIREMENTS SHALL APPLY REGARDLESS OF WHETHER OR NOT DUCT INSULATION IS SHOWN ON THE DRAWINGS.
- I. WHERE DUCT INSULATION IS SHOWN ON THE DRAWINGS (EITHER WITH THE HATCHING CONVENTION OR BY MEANS OF A KEY NOTE) AND EXCEEDS THE REQUIREMENTS OF THE SCHEDULES IN THE SPECIFICATION, THE ADDITIONAL INSULATION REQUIREMENTS SHALL BE MET.
- J. PROVIDE MANUAL BALANCE DAMPERS FOR EACH EXHAUST, SUPPLY, AND RETURN GRILLE WHERE AN AIR VOLUME HAS BEEN PROVIDED.
- K. INSTALL BALANCE DAMPERS AS FAR AWAY FROM GRILLES OR DIFFUSERS SERVED AS PRACTICALLY POSSIBLE.
- L. INSTALL ALL BALANCE DAMPERS IN AN EASILY ACCESSIBLE LOCATION.
- M. REFER TO ARCHITECTURAL REFLECTED CEILING PLANS FOR EXACT LOCATIONS OF GRILLES AND DIFFUSERS.
- N. REFER TO CONTROLS SCHEMATICS FOR REQUIREMENTS FOR SENSORS, ACTUATORS AND OTHER CONTROLS COMPONENTS.
- O. CONTRACTOR SHALL SCAN FOR REBAR AND CONDUIT AND PROVIDE RESULTS OF SCAN IN WRITING TO OWNER PRIOR TO CORING OR DRILLING IN ANY CONCRETE WALL OR FLOOR.
- P. AT DUCT HEATER INTAKE, INSTALL A MINIMUM OF 24" STRAIGHT DUCT. INSTALL A MINIMUM OF 30" OF DUCT BETWEEN DIFFUSER, GRILLE OR ACCESS DOOR AND DUCT HEATER DISCHARGE. INSTALL HEAT SUCH THAT THERE IS 24" CLEARANCE BETWEEN CONTROL BOX COVER AND ANY OBSTRUCTION.
- Q. FRESH AIR INTAKES SHALL BE A MINIMUM OF 3 METERS FROM ALL EXHAUST DISCHARGES. COMPLETE WITH LOUVER, BACKDRAFT DAMPER AND BIRD SCREEN.

KEY NOTES

- 1. PROVIDE NEW FIRE DAMPER WHERE EXISTING EXHAUST DUCT PASSES INTO SHAFT ABOVE THE CEILING LEVEL.
- 2. CONNECT TO EXISTING EXHAUST DUCT.
- 3. NEW LOW LEVEL RETURN FOR FAN COIL. INSTALL BOTTOM OF GRILLE A MINIMUM OF 300MM A.F.F.
- 4. CAP EXISTING DUCT WITHIN WALL. GENERAL CONTRACTOR TO REPAIR OPENING AS PER ARCHITECTURAL REQUIREMENTS.



2 MAIN FLOOR - LOW LEVEL PARTIAL PLAN
SCALE: 1/2" = 1'-0"



1 MAIN FLOOR PARTIAL PLAN - HVAC
SCALE: 1/4" = 1'-0"

CONDENSING UNIT SCHEDULE					
MARK	UNIT SERVED	COOLING CAPACITY (Btu/h)	(kW)	ELECTRICAL CONDENSER (V/PH)	NOTES
CU	2	42100	12	3.5	208/3/60

1. COMPLETE WITH A MINIMUM OF 1 STAGE DIGITAL SCROLL.

DIFFUSER & GRILLES SCHEDULE			
MARK	MODEL	NOTES	
S	5	21X21/SMX/B12	1
R	3	34X14/730/FLA/B12	2
R	4	8X8/730/FLA/B12	2

1. DIRECTIONAL DIFFUSER. REFER TO DRAWING FOR FLOW ARROWS FROM DIFFUSERS FOR THE REQUIRED DIRECTIONAL PATTERN.
2. STAINLESS STEEL EXHAUST GRILLE.

FAN COIL SCHEDULE											
MARK	MODEL	ZONE SERVED	SUPPLY AIRFLOW (cfm)	(L/s)	SUPPLY FAN E.S.P. (° w.c.)	(Pa)	FILTERS	MAXIMUM DIMENSIONS (WxDxH) (mm)	(in)	ELECTRICAL	NOTES
FC	2	DAIKIN BCAD0121	1200	566	0.75	187	MERV-8	800x457x1702	31.5x18x67	120/1/60	1.2

1. ECM DRIVEN BLOWER, DIRECT DRIVE.
2. UNIT IS VERTICAL ORIENTATION.

FAN COIL SOUND POWER SCHEDULE									
MARK	63 Hz	125 Hz	250 Hz	500 Hz	1000 Hz	2000 Hz	4000 Hz	8000 Hz	
FC	2	80/82/68	81/80/68	70/81/57	67/77/51	68/78/54	58/73/50	56/73/34	46/69/28

FAN COIL - COIL SCHEDULE																
MARK	COOLING CAPACITY			AIR TEMPERATURES						MEDIUM	NOTES					
	TOTAL (Btu/h)	(kW)	(tons)	EDB (°F)	(°C)	EWB (°F)	(°C)	LDW (°F)	(°C)							
FC	2	44669	13.1	3.7	31.048	9.1	80	27	67	19	56	14	56	14	R-410a	1.2

1. PROVIDE WITH STAINLESS STEEL DRAIN PAN.
2. PROVIDE WITH COATED COIL FOR POOL APPLICATION. REFER TO SPECIFICATIONS. VELOCITY OF COIL NOT TO EXCEED 450 FPM.

1	22-05-26	Issued for Addendum 2
0	22-04-26	Issued for Construction

No.	DATE	REVISION / ISSUANCE
-----	------	---------------------

Architect



Engineer



Project: BID OPPORTUNITY 878-2021

PAN AM POOL UNIVERSAL CHANGE ROOM 25 POSEIDON BAY

Sheet Title

MAIN FLOOR - HVAC RENOVATION PLAN

Project No. 21085

Date: 22-04-26

**MH2.2
- R1**