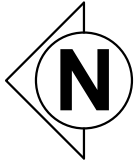


This is a print of a document that has been electronically authenticated with technology authorized by the Engineers Geoscientists Manitoba. The original is in electronic form.

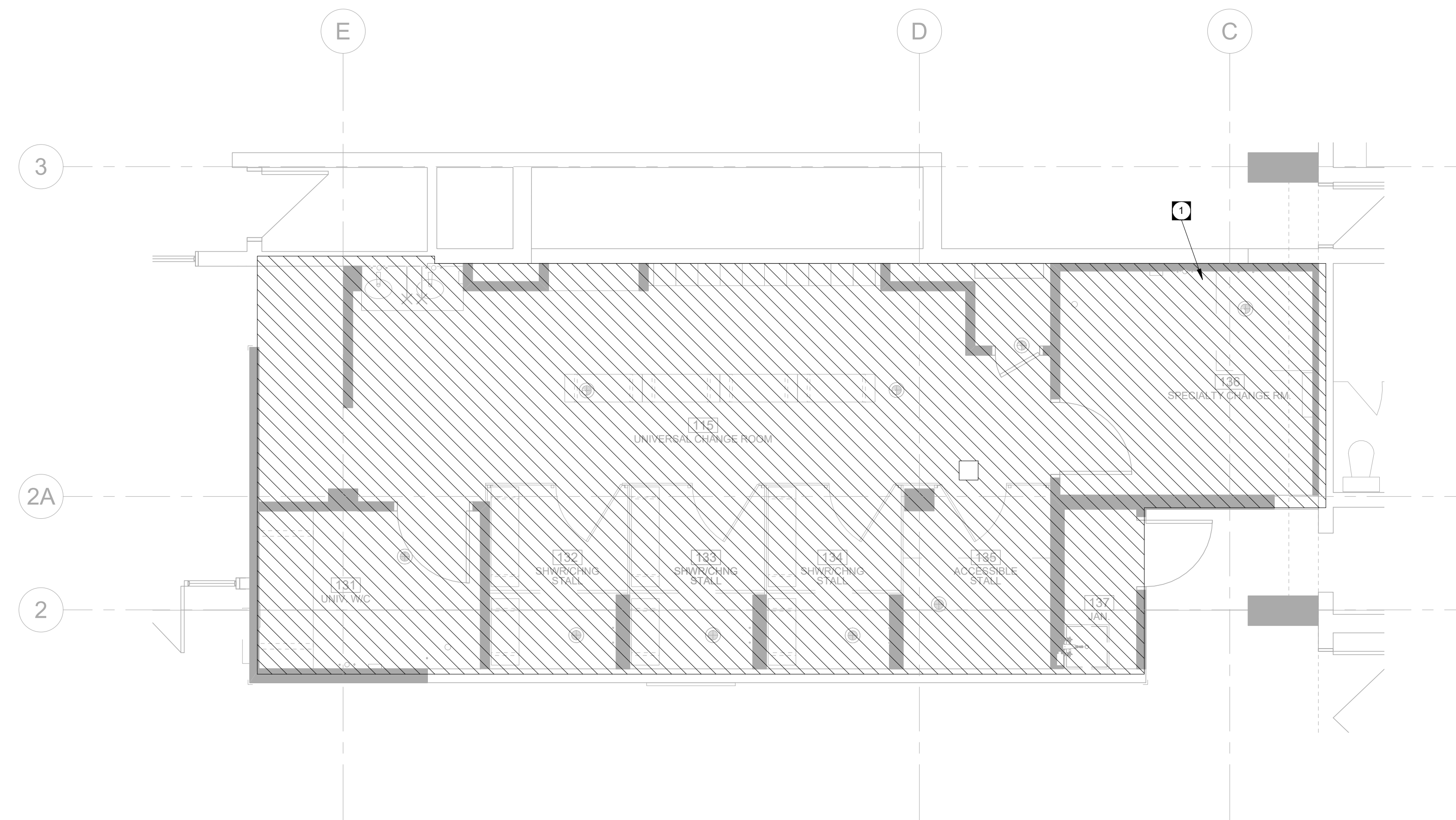


**FIRE PROTECTION GENERAL NOTES**

- A. THE SPRINKLER CONTRACTOR SHALL INSTALL A COMPLETE SPRINKLER SYSTEM AS NOTED ON THE DRAWINGS AND SPECIFICATIONS.
- B. THE SPRINKLER CONTRACTOR SHALL PREPARE ALL NECESSARY DETAILED DESIGN DRAWINGS AND/OR DOCUMENTS AND SUBMIT TO THE ENGINEER FOR REVIEW AND COORDINATION. ENSURE COMPLETE SPRINKLER COVERAGE IN COMPLIANCE WITH NFPA 13, AND RELATED APPLICABLE NFPA CODES.
- C. THE INSTALLATION OF SPRINKLER SYSTEMS SHALL NOT COMMENCE UNTIL THE COMPLETE SHOP DRAWINGS AND SPECIFICATIONS HAVE BEEN APPROVED BY THE AUTHORITY HAVING JURISDICTION (A.H.J.).
- D. IN AREAS WITH SUSPENDED TILE CEILINGS INSTALL SPRINKLER HEADS CENTRED ON THE TILES. ALLOW FOR ADDITIONAL HEADS IF NECESSARY TO MEET THIS REQUIREMENT.
- E. THE SPRINKLER CONTRACTOR SHALL CONFIRM ON SITE THE LOCATIONS OF EXISTING STRUCTURES, EQUIPMENT, AND SYSTEMS FOR INTERFERENCE AND COORDINATION PURPOSES. INCLUDE ALL OFFSETS, ADDITIONAL LOW-POINT DRAINS, ADDITIONAL HEADS AS REQUIRED, ROUTE BRANCH LINES AS REQUIRED.
- F. GRADE ALL NEW PIPING TO ALLOW COMPLETE SYSTEM DRAINAGE. DRAINAGE SHALL BE ROUTED TO THE NEAREST SANITARY DRAIN OF SUFFICIENT SIZE. COORDINATE WITH PLUMBING CONTRACTOR. DRAINAGE TO STORM DRAINAGE PIPING OR SUMP PITS IS NOT PERMITTED.
- G. THE SPRINKLER INSTALLATION SHALL COMPLY WITH THE APPLICABLE NFPA CODES AND REQUIREMENTS OF THE A.H.J. IF THERE IS A CONFLICT WITH THE PERCEIVED INTENT OF THIS DRAWING SET AND THE REQUIREMENTS OF NFPA OR THE A.H.J., NOTIFY THE ENGINEER TO RESOLVE. NO INCREASES TO THE CONTRACT WILL BE PERMITTED FOR COMPLIANCE WITH MINIMUM CODE REQUIREMENTS.
- H. THE SPRINKLER CONTRACTOR SHALL SUPPLY AND INSTALL FIRE EXTINGUISHERS AND CABINETS IN COMPLIANCE WITH NFPA 10. COORDINATE EXTINGUISHER AND CABINET TYPE WITH ARCHITECTURAL DRAWINGS AND SPECIFICATIONS.

**KEY NOTES**

- 1. ADJUST SPRINKLER HEADS WITHIN THE SHADED AREA TO MEET THE NEW ARRANGEMENT AS SHOWN ON ARCHITECTURAL PLANS. AREA IS TO REMAIN LIGHT HAZARD.



**1** MAIN FLOOR PARTIAL PLAN - FIRE PROTECTION  
MF2.1 SCALE: 1/4" = 1'-0"

**SPRINKLER SYMBOLS**

○	UPRIGHT SPRINKLER
●	PENDENT SPRINKLER
⊗	SPRINKLER WITH GUARD
▽	SIDEWALL SPRINKLER
⊗	RISER



0 22-04-26 Issued for Construction

No. DATE: REVISION / ISSUANCE

Seal

Architect

x architecture inc.  
107 Fort Street, Suite 103 Winnipeg, Manitoba R3C 1C7 204.316.2016

Engineer

**epp siepman  
engineering**

400 - 136 Market Avenue  
Winnipeg, MB R3B 0P4  
T 204 453 1080

Project: BID OPPORTUNITY 878-2021

PAN AM POOL UNIVERSAL  
CHANGE ROOM  
25 POSEIDON BAY

Sheet Title

**MAIN FLOOR - FIRE  
PROTECTION PLAN**

Project No. 21085

Date 22-04-26

**MF2.1**