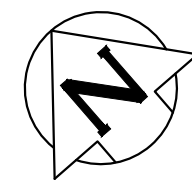


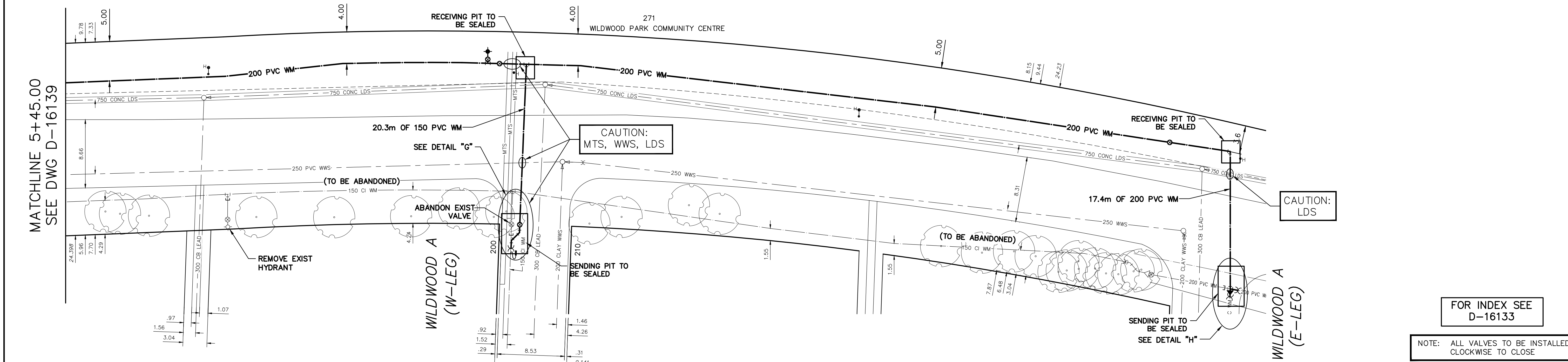
NOTE: CHAINAGES SHOWN ARE ALONG S. P. OF NORTH DRIVE

**CONSTRUCTION NOTES**

- BOREHOLES ANNULUS IN SENDING AND RECEIVING PIT CROSSING THE PRIMARY LINE OF DEFENSE (PLD) TO BE SEALED IN ACCORDANCE WITH E9.
- BACKFILLING OF EXCAVATIONS TO BE IN ACCORDANCE WITH E9.
- LIMITS OF PRIMARY LINE OF DEFENSE (PLD) AS SHOWN IN APPENDIX "A".



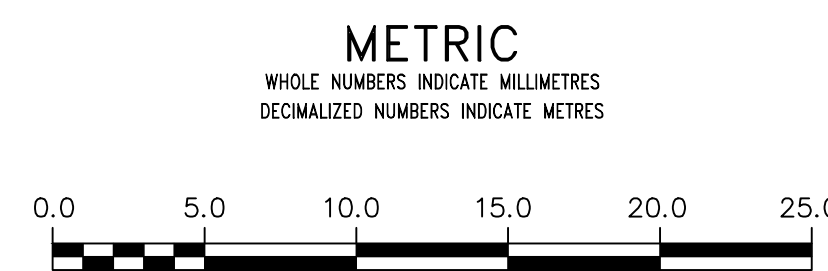
**WATER SERVICE INFORMATION**  
 WATER SERVICES TO ALL HOUSES ON WILDWOOD A, B, C, AND D SERVICED FROM WATER MAINS LOCATED ON THOSE PARTICULAR STREETS.



MATCHLINE 5+45.00  
SEE DWG D-16139

FOR INDEX SEE D-16139

NOTE: ALL VALVES TO BE INSTALLED CLOCKWISE TO CLOSE



**WARNING**  
 IF POWER EQUIPMENT OR EXPLOSIVES ARE TO BE USED FOR EXCAVATION ON THIS PROJECT THE CONTRACTOR MUST:  
 1) NOTIFY THE GAS COMPANY OF THE PROPOSED LOCATION OF EXCAVATION.  
 2) TAKE PRECAUTION TO AVOID DAMAGE TO GAS COMPANY INSTALLATIONS.  
 SEE PROVINCIAL REGULATION 210/72 FOR DETAILS

**LOCATION APPROVED UNDERGROUND STRUCTURES**  
 SUPV. U/G STRUCTURES COMMITTEE DATE  
 NOTE:  
 LOCATION OF UNDERGROUND STRUCTURES AS SHOWN ARE BASED ON THE BEST INFORMATION AVAILABLE BUT NO GUARANTEE IS GIVEN THAT ALL EXISTING UTILITIES ARE SHOWN OR THAT THE GIVEN LOCATIONS ARE EXACT. CONFIRMATION OF EXISTENCE AND EXACT LOCATION OF ALL SERVICES MUST BE OBTAINED FROM THE INDIVIDUAL UTILITIES BEFORE PROCEEDING WITH CONSTRUCTION.

VERTICAL DATUM: CGVD28 (HT2.0 Geoid)  
 HORIZONTAL DATUM: NAD83 (June 1990), Zone 14

NO.	REVISIONS	DATE	BY

DESIGNED BY	RG	CHECKED BY	SC
DRAWN BY	AJ/AOM	APPROVED BY	KZ
SCALE:			
HORIZONTAL	1:250		
VERTICAL	1:50		
DATE	2022 07 14		
PLOT DATE:	2022 07 14		

ENGINEER'S SEAL  
 CONSULTANT DRAWING NUMBER

**THE CITY OF WINNIPEG**  
 WATER AND WASTE DEPARTMENT  
 ENGINEERING DIVISION

2022 WATER MAIN RENEWALS  
 CONTRACT 12  
**NORTH DRIVE**  
 18.2 S OF WILDWOOD B (E-LEG) TO  
 89.0 S OF WILDWOOD A (E-LEG)

SHEET 11 OF 14  
 CITY DRAWING NUMBER  
**D-16139**