

WATER SERVICE INFORMATION

ADDRESS	SIZE (mm) MATERIAL (STREET)	SIZE (mm) MATERIAL (PROP.)	SHORT & LONG MEASUREMENT	LINEAR DISTANCE (1) CORP LOCATION (2)	REMARKS
1465 CHEVRIER BLVD COMMERCIAL	50 CU	50 CU	0.91 EEL BLDG	95.921 WWL HAMLIN AVE	OPP S/C RECONNECT SERVICE
1461 CHEVRIER BLVD COMMERCIAL	25 CU	25 CU	4.26 EW BLDG	85.292 WWL HAMLIN AVE	OPP S/C RECONNECT SERVICE

(1) LINEAR DISTANCE FROM THE S/C TO THE CORP USED ALONG BENDS & CURVED R.O.W.
 (2) DIRECTION FROM S/C

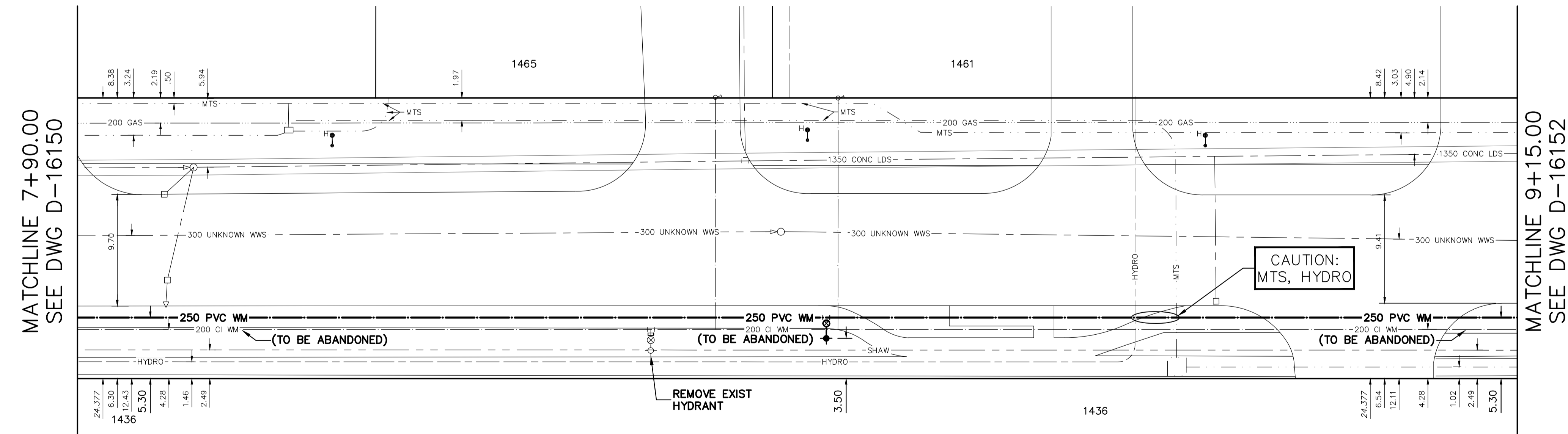
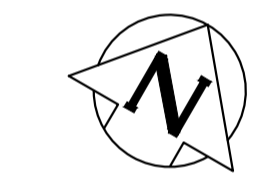
* SERVICES TO BE RENEWED TO R_L. ALL OTHERS TO BE RECONNECTED

CONSTRUCTION NOTES

- Permanent restoration of the asphalt active transportation path, separate concrete splash strip and concrete sidewalk to be in accordance with E5.

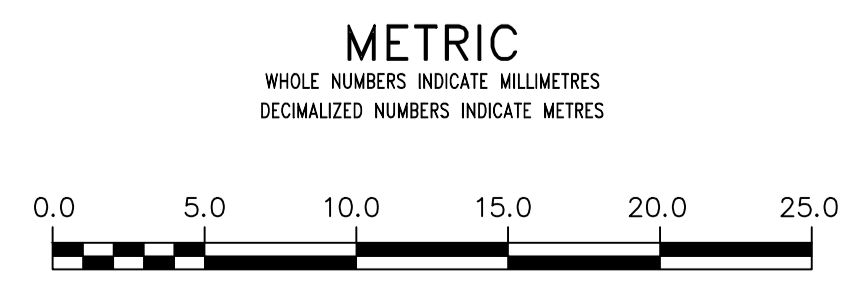
NOTE: CHAINAGES SHOWN ARE ALONG S. R_L OF CHEVRIER BOULEVARD

CHEVRIER BOULEVARD



FOR INDEX SEE D-16144

NOTE: ALL VALVES TO BE INSTALLED CLOCKWISE TO CLOSE



WARNING
 IF POWER EQUIPMENT OR EXPLOSIVES ARE TO BE USED FOR EXCAVATION ON THIS PROJECT THE CONTRACTOR MUST:
 1) NOTIFY THE GAS COMPANY OF THE PROPOSED LOCATION OF EXCAVATION.
 2) TAKE PRECAUTION TO AVOID DAMAGE TO GAS COMPANY INSTALLATIONS.
 SEE PROVINCIAL REGULATION 210/72 FOR DETAILS

LOCATION APPROVED UNDERGROUND STRUCTURES
 SUPV. U/G STRUCTURES COMMITTEE DATE
 NOTE:
 LOCATION OF UNDERGROUND STRUCTURES AS SHOWN ARE BASED ON THE BEST INFORMATION AVAILABLE BUT NO GUARANTEE IS GIVEN THAT ALL EXISTING UTILITIES ARE SHOWN OR THAT THE GIVEN LOCATIONS ARE EXACT. CONFIRMATION OF EXISTENCE AND EXACT LOCATION OF ALL SERVICES MUST BE OBTAINED FROM THE INDIVIDUAL UTILITIES BEFORE PROCEEDING WITH CONSTRUCTION.

VERTICAL DATUM: CGVD28 (HT2.0 Geoid)
 HORIZONTAL DATUM: NAD83 (June 1990), Zone 14

NO.	REVISIONS	DATE	BY

DESIGNED BY	RG	CHECKED BY	SC
DRAWN BY	RS	APPROVED BY	KZ
SCALE:			
HORIZONTAL	1: 250		
VERTICAL	1: 50		
DATE	2022 05 12	RELEASED FOR CONSTRUCTION	
PLOT DATE:	2022 05 12	DATE	

ENGINEER'S SEAL
 CONSULTANT DRAWING NUMBER

THE CITY OF WINNIPEG
 WATER AND WASTE DEPARTMENT
 ENGINEERING DIVISION

2022 WATER MAIN RENEWALS
 CONTRACT 13
 CHEVRIER BOULEVARD
 390 E OF NEWMARKET BOULEVARD TO
 26.5 W OF HAMLIN AVENUE

SHEET 9 OF 11
 CITY DRAWING NUMBER
 D-16151