

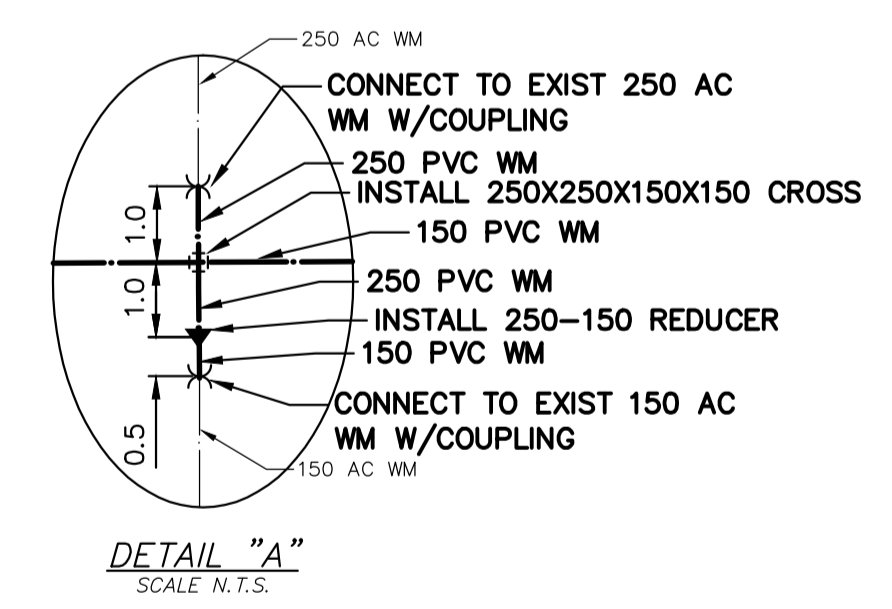
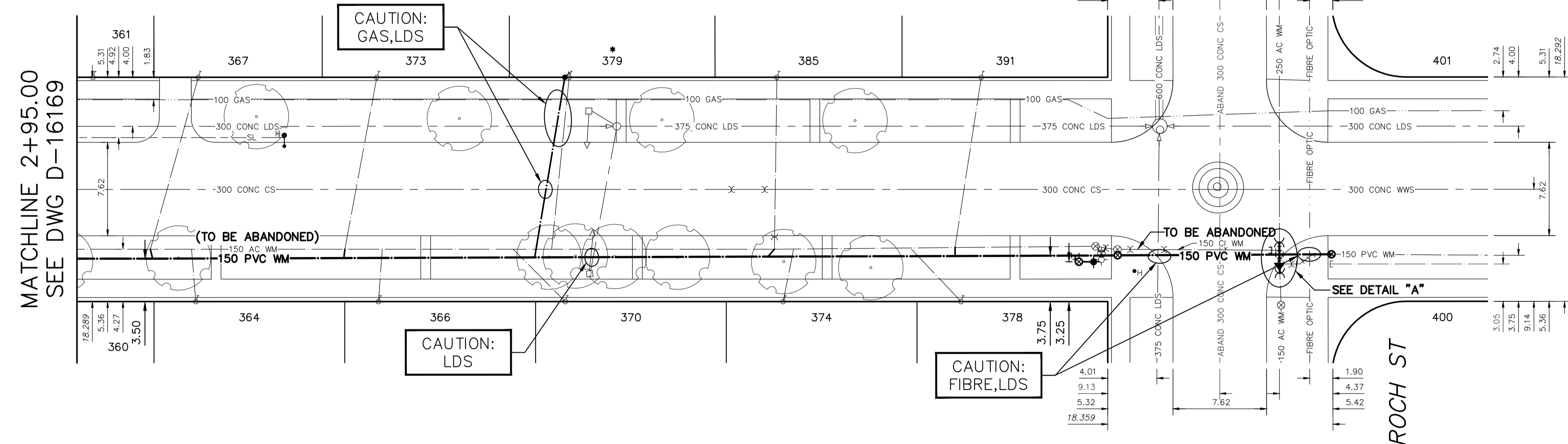
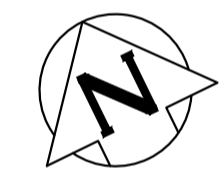
**WATER SERVICE INFORMATION**

ADDRESS	SIZE (mm) MATERIAL (STREET)	SIZE (mm) MATERIAL (PROP.)	SHORT & LONG MEASUREMENT	CORP LOCATION	REMARKS
360 HELMSDALE AVE	20	20	3.67 EWL HSE		
RESIDENTIAL	CU	CU	190.670 EEL BRAZIER ST	OPP S/C	RECONNECT SERVICE
361 HELMSDALE AVE	-	20	9.18 EWL HSE		
RESIDENTIAL	CU	CU	196.320 EEL BRAZIER ST		RECONNECT SERVICE
364 HELMSDALE AVE	20	20	2.07 EWL HSE		
RESIDENTIAL	CU	CU	74.330 WWL ROCH ST	0.3 W OF S/C	RECONNECT SERVICE
366 HELMSDALE AVE	20	20	1.04 EWL HSE		
RESIDENTIAL	CU	CU	59.440 WWL ROCH ST	0.3 E OF S/C	RECONNECT SERVICE
367 HELMSDALE AVE	12	12	0.74 EWL HSE		
RESIDENTIAL	CU	CU	74.320 WWL ROCH ST	3.9 W OF S/C	RECONNECT SERVICE
370 HELMSDALE AVE	20	20	1.34 EWL HSE		
RESIDENTIAL	CU	CU	44.210 WWL ROCH ST	4.2 W OF S/C	RECONNECT SERVICE
373 HELMSDALE AVE	12	20	2.83 EWL HSE		
RESIDENTIAL	CU	CU	59.570 WWL ROCH ST	2.6 W OF S/C	RECONNECT SERVICE
374 HELMSDALE AVE	20	20	4.55 EWL BLDG		
RESIDENTIAL	CU	CU	26.520 WWL ROCH ST	0.8 E OF S/C	RECONNECT SERVICE
376 HELMSDALE AVE	20	20	2.41 EWL BLDG		
RESIDENTIAL	CU	CU	11.850 WWL ROCH ST	4.0 W OF S/C	RECONNECT SERVICE
* 379 HELMSDALE AVE	12	12	4.37 EWL HSE		
RESIDENTIAL	CU	CU	43.880 WWL ROCH ST	1.4 W OF S/C	RENEW TO R W/20 CU
385 HELMSDALE AVE	12	12	4.37 EWL HSE		
RESIDENTIAL	CU	CU	26.970 WWL ROCH ST	0.2 W OF S/C	RECONNECT SERVICE
391 HELMSDALE AVE	12	12	4.19 EWL HSE		
RESIDENTIAL	CU	CU	10.300 WWL ROCH ST	2.1 W OF S/C	RECONNECT SERVICE
400 HELMSDALE AVE	20	20	0.80 EEL HSE		
RESIDENTIAL	CU	CU	14.330 EEL ROCH ST	0.8 E OF S/C	RECONNECT SERVICE
401 HELMSDALE AVE	20	20	8.96 EWL HSE		
RESIDENTIAL	CU	CU	14.240 EEL ROCH ST	2.5 E OF S/C	RECONNECT SERVICE

\* SERVICES TO BE RENEWED TO R. ALL OTHERS TO BE RECONNECTED

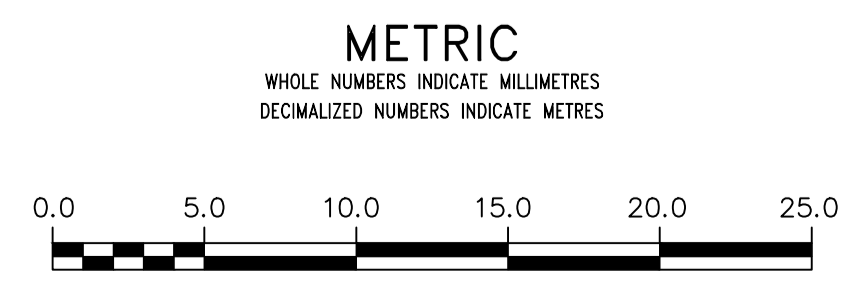
NOTE: CHAINAGES SHOWN ARE ALONG S. R. OF HELMSDALE AVENUE

HELMSDALE AVENUE



FOR INDEX SEE D-16167

NOTE: ALL VALVES TO BE INSTALLED COUNTERCLOCKWISE TO CLOSE



**WARNING**  
IF POWER EQUIPMENT OR EXPLOSIVES ARE TO BE USED FOR EXCAVATION ON THIS PROJECT THE CONTRACTOR MUST:  
1) NOTIFY THE GAS COMPANY OF THE PROPOSED LOCATION OF EXCAVATION.  
2) TAKE PRECAUTION TO AVOID DAMAGE TO GAS COMPANY INSTALLATIONS.  
SEE PROVINCIAL REGULATION 210/72 FOR DETAILS

**LOCATION APPROVED**  
UNDERGROUND STRUCTURES  
SUPV. U/G STRUCTURES COMMITTEE DATE  
NOTE:  
LOCATION OF UNDERGROUND STRUCTURES AS SHOWN ARE BASED ON THE BEST INFORMATION AVAILABLE BUT NO GUARANTEE IS GIVEN THAT ALL EXISTING UTILITIES ARE SHOWN OR THAT THE GIVEN LOCATIONS ARE EXACT. CONFIRMATION OF EXISTENCE AND EXACT LOCATION OF ALL SERVICES MUST BE OBTAINED FROM THE INDIVIDUAL UTILITIES BEFORE PROCEEDING WITH CONSTRUCTION.

VERTICAL DATUM: CGVD28 (HT2.0 Geoid)  
HORIZONTAL DATUM: NAD83 (June 1990), Zone 14

NO.	REVISIONS	DATE	BY

DESIGNED BY	JB	CHECKED BY	SC
DRAWN BY	AJ	APPROVED BY	KZ
SCALE:		RELEASED FOR CONSTRUCTION	
HORIZONTAL	1:250		
VERTICAL	1:50		
DATE	2022 03 14	DATE	

PLOT DATE: 2022 03 14

ENGINEER'S SEAL  
CONSULTANT DRAWING NUMBER

**THE CITY OF WINNIPEG**  
WATER AND WASTE DEPARTMENT  
ENGINEERING DIVISION

2022 WATER MAIN RENEWALS  
CONTRACT 1  
HELMSDALE AVENUE  
195 E OF BRAZIER STREET TO  
ROCH STREET

SHEET 5 OF 11  
CITY DRAWING NUMBER  
D-16170

FILE PATH: R:\DRAWINGS\WATER\RENEWAL\2022 RENEWALS\Contract 1\Construction Dwg\ HELMSDALE AVE.dwg