

- REFERENCE NOTES:**
- PAVEMENT DIMENSIONS ARE TO BACK OF CURB
 - BASELINE IS CENTER LINE ROADWAY
 - PROPERTY LINES OBTAINED FROM CITY OF WINNIPEG L.B.I.S., AND NO SCALE FACTOR WAS APPLIED
 - REFER TO AECOM FIELD BOOK NO. 5114
- CONSTRUCTION NOTES:**
- CONSTRUCT NEW ASPHALT PAVEMENT OVERLAY TYPE 1A (100mm AVG. THICKNESS)
 - REMOVE EXISTING CONCRETE PAVEMENT AND CONSTRUCT NEW 150mm REINFORCED CONCRETE PAVEMENT c/w ASPHALT OVERLAY TYPE 1A
 - ADJUST EXISTING MANHOLE / CATCH BASIN TO GRADE
 - INSTALL NEW CAST IRON RISER RING
 - REMOVE EXISTING FRAME AND COVER AND PLACE NEW FRAME AND COVER (AP-006 / AP-007)
 - ADJUST EXISTING PAVING STONES
 - ADJUST EXISTING PATIO BLOCKS
 - REMOVE EXISTING PAVEMENT AND CONSTRUCT NEW 150mm REINFORCED CONCRETE PAVEMENT
 - RENEW 100mm CONCRETE SIDEWALK
 - RENEW EXISTING CONCRETE BARRIER CURB (DOWELED SD-205 100mm REVEAL HT.)
 - INSTALL CONCRETE BARRIER CURB (SEPARATE SD-203A 150mm REVEAL HT.)
 - ADJUST EXISTING WATER VALVE TO GRADE
 - RENEW 100mm PRIVATE CONCRETE SIDEWALK
 - PLANE EXISTING ASPHALT PAVEMENT
 - REMOVE EXISTING CONCRETE SIDEWALK
 - CONTRACT ADMINISTRATOR TO DETERMINE LOCATIONS FOR INSTALLATION OF PAVEMENT REPAIR FABRIC PRIOR TO ASPHALT PAVING
 - MH20008102 - REPAIR BENCHING AND REPLACE RISER TO 1.0m

ENGINEERS
SCIENTISTS
MANITOBA
 Certificate of Authorization
 AECOM Canada Ltd.
 No. 4671 Date: 2022/02/17

METRIC
 WHOLE NUMBERS INDICATE MILLIMETRES
 DECIMALIZED NUMBERS INDICATE METRES

EXISTING	LEGEND - PLAN	PROPOSED	EXISTING	LEGEND - PLAN	PROPOSED	EXISTING	LEGEND - PROFILE	PROPOSED
150mm W.W.M.	WATERMAIN	150mm W.W.M.	HYDRO	M.T.S.	CONCRETE	---	Q PROFILE	---
300mm L.D.S.	LAND DRAINAGE SEWER	300mm L.D.S.	---	CONCRETE	---	---	WEST GUTTER	---
250mm W.W.S.	WASTEWATER SEWER	250mm W.W.S.	---	ASPHALT	---	---	EAST GUTTER	---
---	MANHOLE	---	---	PROPERTY LINE	---	---	WEST PROPERTY LINE	---
---	CATCH BASIN	---	---	SURVEY BAR	---	---	EAST PROPERTY LINE	---
---	CATCH PIT	---	---	ELEVATION	(235.750)	---	---	---
---	JUNCTIONS	---	---	TREE	---	---	---	---
---	CULVERT	---	---	SIDEWALK RAMP	---	---	---	---
---	GAS	---	---	CONCRETE SIDEWALK	---	---	---	---
---	---	---	---	FENCE	---	---	---	---

LOCATION APPROVED UNDERGROUND STRUCTURES

SUPV. U/G STRUCTURES COMMITTEE DATE

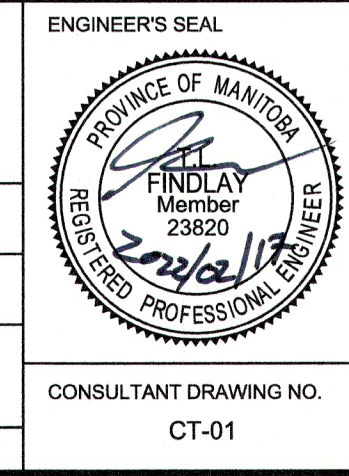
NOTE: LOCATION OF UNDERGROUND STRUCTURES AS SHOWN ARE BASED ON THE BEST INFORMATION AVAILABLE. BUT NO GUARANTEE IS GIVEN THAT ALL EXISTING UTILITIES ARE SHOWN OR THAT THE GIVEN LOCATIONS ARE EXACT. CONFIRMATION OF EXISTENCE AND EXACT LOCATION OF ALL SERVICES MUST BE OBTAINED FROM THE INDIVIDUAL UTILITIES BEFORE PROCEEDING WITH CONSTRUCTION.

B.M. #45 S.E. Corn. Portage Ave. & Parkview Str., Tbit. in N. Con. Foundation No. 1830 Portage Ave. (Oswald Apts.) 0.5m E. & 6.5m below brick of N.W. Corn. of Bldg. ELEVATION 234.937 BOOK #5114

AECOM

DESIGNED BY: BC CHECKED BY: BC/TF
 DRAWN BY: AA APPROVED BY:
 HOR. SCALE: 1=250
 VERTICAL: 1=10
 DATE: 02/17/2022

0 ISSUED FOR TENDER 02/17/2022 BC
 A ISSUED FOR REVIEW 01/28/2022 BC
 NO. REVISIONS DATE BY



THE CITY OF WINNIPEG
 PUBLIC WORKS DEPARTMENT
 ENGINEERING DIVISION

2022 LOCAL AND INDUSTRIAL STREET RENEWAL PROGRAM

PARKVIEW STREET - ASSINIBOINE AVENUE TO PORTAGE AVENUE
 ASPHALT PAVEMENT REHABILITATION
 ASSINIBOINE AVENUE TO STATION 0+210

CITY DRAWING NUMBER SHEET 01 OF 19

CONSULTANT DRAWING NO. CT-01