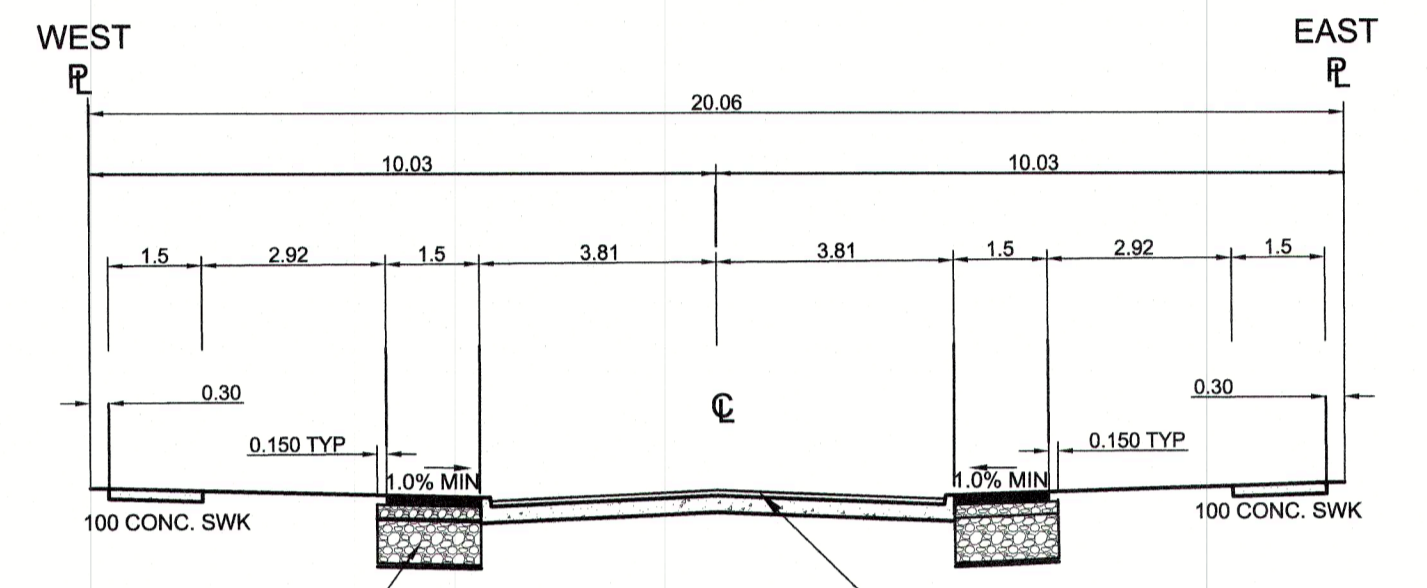


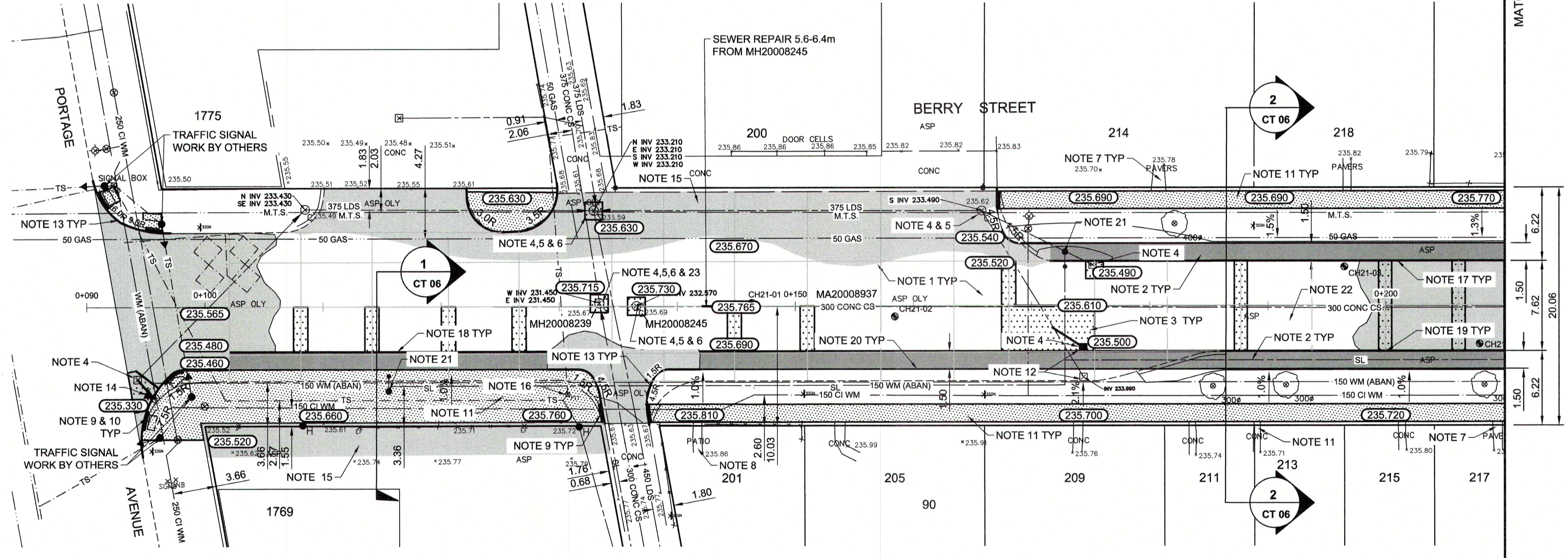
**1 ASPHALT PATH TYPICAL SECTION-1 AT SIDEWALK**  
Scale NTS



**2 ASPHALT PATH TYPICAL CROSS SECTION-2**  
Scale NTS

- REFERENCE NOTES:**
- PAVEMENT DIMENSIONS ARE TO BACK OF CURB
  - BASELINE IS CENTRE LINE ROADWAY
  - PROPERTY LINES OBTAINED FROM CITY OF WINNIPEG L.B.I.S., AND NO SCALE FACTOR WAS APPLIED
  - REFER TO AECOM FIELD BOOK NO. 5113

- CONSTRUCTION NOTES:**
- CONSTRUCT NEW ASPHALT PAVEMENT OVERLAY TYPE 1A (100mm AVG. THICKNESS)
  - CONSTRUCT NEW ASPHALT BIKE PATHWAY PAVEMENT TYPE 1A (75mm THICKNESS) C/W COMPACTED 125mm OF LIMESTONE BASE COURSE, GEOGRID, 150mm OF 50mm LIMESTONE SUB-BASE AND SEPARATION/FILTRATION GEOTEXTILE
  - REMOVE EXISTING CONCRETE PAVEMENT AND CONSTRUCT NEW 150mm REINFORCED CONCRETE PAVEMENT
  - ADJUST EXISTING MANHOLE / CATCH BASIN TO GRADE
  - INSTALL NEW CAST IRON RISER RING
  - REMOVE EXISTING FRAME AND COVER AND PLACE NEW FRAME AND COVER (AP-006 / AP-007)
  - ADJUST EXISTING PAVING STONES
  - ADJUST EXISTING PATIO BLOCKS
  - CONSTRUCT NEW CONCRETE CURB RAMP (10-12mm MONOLITHIC)
  - INSTALL NEW DETECTABLE WARNING TILE
  - RENEW 100mm CONCRETE SIDEWALK
  - REMOVE AND RELOCATE EXISTING CATCH BASIN AND CONNECT TO EXISTING 250mm LEAD
  - REMOVE EXISTING BARRIER CURB AND CONSTRUCT NEW MODIFIED BARRIER CURB (150mm REVEAL)
  - INSTALL NEW CATCHPIT c/w BARRIER CURB AND GUTTER INLET FRAME AND COVER (SD-023) AND CONNECT TO EXISTING CATCH BASIN
  - REMOVE EXISTING ASPHALT PAVEMENT AND PLACE 75mm ASPHALT PAVEMENT (TYPE 1A)
  - ADJUST EXISTING TRAFFIC SIGNAL SPLICE PIT TO GRADE
  - REMOVE EXISTING BARRIER CURB AND CONSTRUCT NEW CONCRETE BARRIER CURB (75mm REVEAL HT. DOWELED)
  - CONSTRUCT NEW CONCRETE BARRIER CURB (75mm REVEAL HT. DOWELED)
  - INSTALL CONCRETE BARRIER CURB (SEPARATE SD-203A 75mm REVEAL)
  - REMOVE EXISTING CONCRETE BARRIER CURB
  - REMOVE AND RELOCATE STREET LIGHTS. REFER TO MANITOBA HYDRO STREET LIGHT DRAWINGS FOR LOCATION
  - CONTRACT ADMINISTRATOR TO DETERMINE LOCATIONS FOR INSTALLATIONS OF PAVEMENT REPAIR FABRIC PRIOR TO ASPHALT PAVING
  - MH20008239 - REPLACE RISER TO 1.6m



**ENGINEERS  
GEO-SCIENTISTS  
MANITOBA**  
Certificate of Authorization  
AECOM Canada Ltd.  
No. 4671 Date: 2022/02/17

**METRIC**  
WHOLE NUMBERS INDICATE MILLIMETRES  
DECIMALIZED NUMBERS INDICATE METRES

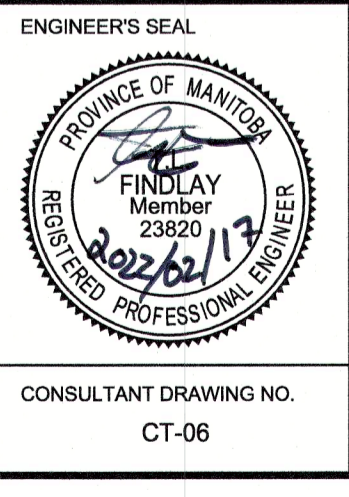
EXISTING	LEGEND - PLAN	PROPOSED	EXISTING	LEGEND - PLAN	PROPOSED	EXISTING	LEGEND - PROFILE	PROPOSED
150mm W.M.	WATERMAIN	150mm W.M.	---	HYDRO	---	---	C. PROFILE	---
300mm L.D.S.	HYDRANT	300mm L.D.S.	---	M.T.S.	---	---	WEST GUTTER	---
250mm W.W.S.	VALVE	250mm W.W.S.	---	CONCRETE	---	---	EAST GUTTER	---
---	LAND DRAINAGE SEWER	---	---	ASPHALT	---	---	WEST PROPERTY LINE	---
---	WASTEWATER SEWER	---	---	PROPERTY LINE	---	---	EAST PROPERTY LINE	---
---	MANHOLE	---	---	SURVEY BAR	---	---	---	---
---	CATCH BASIN	---	---	ELEVATION	---	---	---	---
---	CATCH PIT	---	---	TREE	---	---	---	---
---	JUNCTIONS	---	---	SIDEWALK RAMP	---	---	---	---
---	CULVERT	---	---	CONCRETE SIDEWALK	---	---	---	---
---	GAS	---	---	FENCE	---	---	---	---

**LOCATION APPROVED UNDERGROUND STRUCTURES**

SUPV. U/G STRUCTURES COMMITTEE DATE

**NOTE:**  
LOCATION OF UNDERGROUND STRUCTURES AS SHOWN ARE BASED ON THE BEST INFORMATION AVAILABLE. BUT NO GUARANTEE IS GIVEN THAT ALL EXISTING UTILITIES ARE SHOWN OR THAT THE GIVEN LOCATIONS ARE EXACT. CONFIRMATION OF EXISTENCE AND EXACT LOCATION OF ALL SERVICES MUST BE OBTAINED FROM THE INDIVIDUAL UTILITIES BEFORE PROCEEDING WITH CONSTRUCTION.

B.M. #30 N.W. Corn. Queen St. & Silver Ave., 101. in S. Corn. Foundation No. 424 Queen St., 1m E. & 0.2m below. ELEVATION: 234.449m. BOOK # 5113.	DESIGNED BY	BC	CHECKED BY	BC/TF
	DRAWN BY	AA	APPROVED BY	
	HOR. SCALE:	1=250	RELEASED FOR CONSTRUCTION BY:	
	VERTICAL:	1=10	DATE	
	NO.	0	ISSUED FOR TENDER	02/17/2022
	REVISIONS	A	ISSUED FOR REVIEW	01/28/2022



**ENGINEER'S SEAL**

**THE CITY OF WINNIPEG**  
PUBLIC WORKS DEPARTMENT  
ENGINEERING DIVISION

2022 LOCAL AND INDUSTRIAL STREET RENEWAL PROGRAM

BERRY STREET - PORTAGE AVENUE TO ELLICE AVENUE  
ASPHALT PAVEMENT REHABILITATION  
PORTAGE AVENUE TO STATION 0+210

CITY DRAWING NUMBER  
SHEET 06 OF 19

CONSULTANT DRAWING NO. CT-06