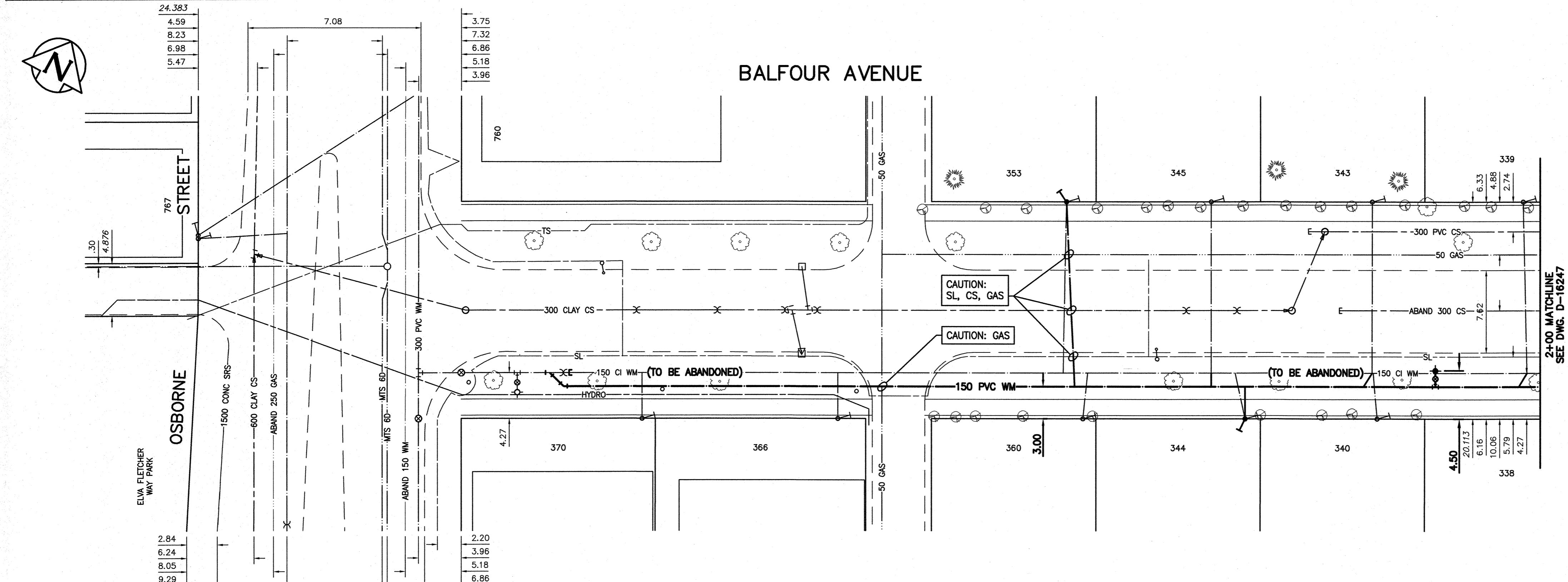


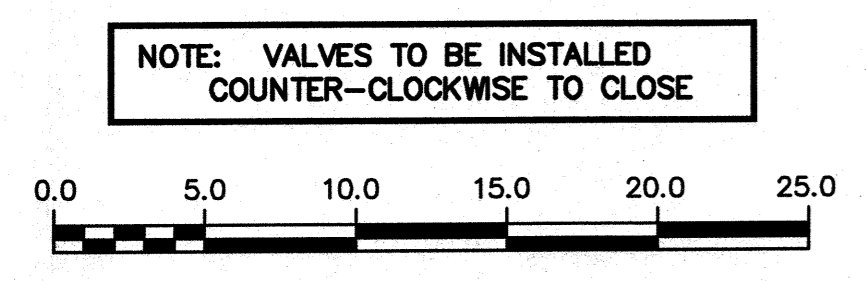
NOTE: CHAINAGES SHOWN ARE ALONG CENTRE LINE OF ROW



**WATER SERVICE INFORMATION**

ADDRESS	PIPE SIZE & MATERIAL (STREET)	PIPE SIZE & MATERIAL (PROP.)	SHORT & LONG MEASUREMENT	CORP. LOCATION	REMARKS
370 BALFOUR AVE	CU	CU	6.00 WEL BLOCK	OPP S/C	RECONNECT SERVICE
RESIDENTIAL	25	25	55.00 EEL OSBORNE		
366 BALFOUR AVE	CU	CU	11.00 WEL BLOCK	OPP S/C	RECONNECT SERVICE
RESIDENTIAL	25	25	114.50 EEL OSBORNE		
360 BALFOUR AVE	CU	CU	OPP EL CELLAR	1.5 E OF S/CBOR	RECONNECT SERVICE
RESIDENTIAL	20	20	189.00 EEL OSBORNE		
* 353 BALFOUR AVE	LEAD	CU	1.00 EWL E WINDOW	183.0 EEL OSBORNE	RENEW SERVICE
RESIDENTIAL	12	20	184.00 EEL OSBORNE		
345 BALFOUR AVE	CU	CU	2.00 WEL OF HSE	OPP S/C	RECONNECT SERVICE
RESIDENTIAL	20	20	228.00 EEL OF OSBORNE		
* 344 BALFOUR AVE	LEAD	LEAD	1.00 WEL FOUNDATION	3.0 W S/C	RENEW SERVICE
RESIDENTIAL	12	12	238.30 EEL OSBORNE		
343 BALFOUR AVE	CU	LEAD	4.27 WEL HOUSE	SAME AS S/C	RECONNECT SERVICE
RESIDENTIAL	20	12	277.00 EEL OSBORNE		
340 BALFOUR AVE	CU	CU	6.23 WEL HOUSE	3.6 W S/C	RECONNECT SERVICE
RESIDENTIAL	20	20	36.40 W 2ND HYD E OSBORNE		
339 BALFOUR AVE	-	-	-	-	RECONNECT SERVICE
RESIDENTIAL	-	-	-	-	

\* SERVICES TO BE RENEWED TO 8



NOTE: VALVES TO BE INSTALLED COUNTER-CLOCKWISE TO CLOSE

FOR INDEX SEE D-16245

**METRIC**  
WHOLE NUMBERS INDICATE MILLIMETRES  
DECIMALIZED NUMBERS INDICATE METRES

**ENGINEERS GEOSCIENTISTS MANITOBA**  
Certificate of Authorization  
Stantec Consulting Ltd.  
No. 1301

LOCATION APPROVED UNDERGROUND STRUCTURES

SUPV. U/G STRUCTURES COMMITTEE DATE

NOTE:  
LOCATION OF UNDERGROUND STRUCTURES AS SHOWN ARE BASED ON THE BEST INFORMATION AVAILABLE BUT NO GUARANTEE IS GIVEN THAT ALL EXISTING UTILITIES ARE SHOWN OR THAT THE GIVEN LOCATIONS ARE EXACT. CONFIRMATION OF EXISTENCE AND EXACT LOCATION OF ALL SERVICES MUST BE OBTAINED FROM THE INDIVIDUAL UTILITIES BEFORE PROCEEDING WITH CONSTRUCTION.

B.M. 53-31 ELEV. 232.097	N.W. Cor. Baltimore Rd. & Hoy St. Brass plug in 14.8m Conc. pile, 2.4m E. of W.L. Hoy St., 2.4m S. of N.L. Baltimore Rd.		
01	ISSUED FOR TENDER	2022.04.22	RS
NO.	REVISIONS	DATE	BY

**Stantec**

DESIGNED BY: RS  
CHECKED BY: RS  
DRAWN BY: OS  
APPROVED BY: RS

SCALE:  
HORIZONTAL: 1:250  
VERTICAL: 1:50

RELEASED FOR CONSTRUCTION  
DATE: 2022.03.01

ENGINEER'S SEAL

PROVINCE OF MANITOBA  
2022-04-22  
R.M. SHERBROOK  
Member  
24045  
REGISTERED PROFESSIONAL ENGINEER

CONSULTANT DRAWING NUMBER  
C-201

**THE CITY OF WINNIPEG**  
WATER AND WASTE DEPARTMENT  
ENGINEERING DIVISION

2022 WATERMAIN RENEWALS  
CONTRACT 5  
BALFOUR AVENUE  
8.2 E OF OSBORNE STREET TO  
100.0 E OF OSBORNE STREET

SHEET 03 OF 16  
CITY DRAWING NUMBER  
D-16246