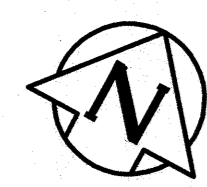
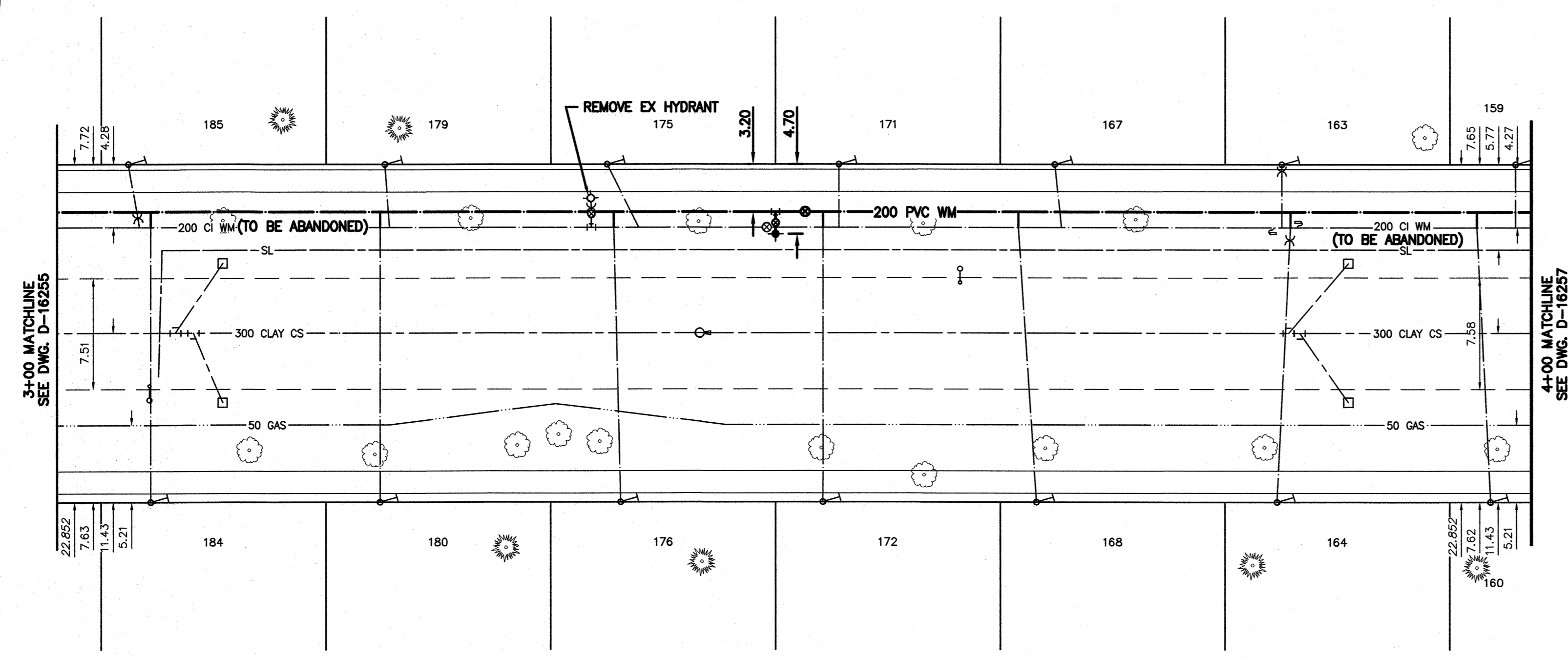


NOTE: CHAINAGES SHOWN ARE ALONG CENTRE LINE OF ROW

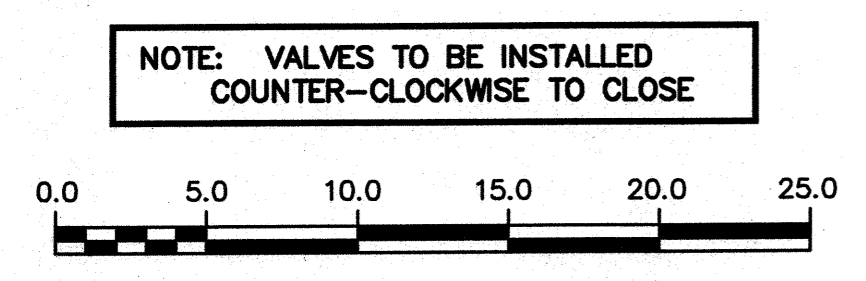


CLARE AVENUE



WATER SERVICE INFORMATION

ADDRESS	PIPE SIZE & MATERIAL (STREET)	PIPE SIZE & MATERIAL (PROP.)	SHORT & LONG MEASUREMENT	CORP. LOCATION	REMARKS
185 CLARE AVE	CU	CU	3.50 EWL HSE	0.8 E OF S/C	RECONNECT SERVICE
RESIDENTIAL	20	20	106.00 EEL FISHER		
184 CLARE AVE	CU	CU	6.00 EWL HSE	OPP S/C	RECONNECT SERVICE
RESIDENTIAL	20	20	111.00 EEL FISHER		
180 CLARE AVE	CU	CU	8.0 EWL HSE	OPP S/C	RECONNECT SERVICE
RESIDENTIAL	20	20	162.00 EEL FISHER		
179 CLARE AVE	CU	CU	2.80 EWL HSE	1.0 E S/C	RECONNECT SERVICE
RESIDENTIAL	20	20	337.00 WWL MABEL		
176 CLARE AVE	CU	CU	11.00 EWL HSE	4.0 E S/C	RECONNECT SERVICE
RESIDENTIAL	20	20	215.50 EEL FISHER		
175 CLARE AVE	CU	CU	2.50 EWL HSE	1.5 E S/C	RECONNECT SERVICE
RESIDENTIAL	20	20	287.60 WWL MABEL		
172 CLARE AVE	CU	CU	5.00 EWL HSE	OPP S/C	RECONNECT SERVICE
RESIDENTIAL	20	20	260.50 EEL FISHER		
171 CLARE AVE	CU	CU	4.50 EWL HSE	OPP S/C	RECONNECT SERVICE
RESIDENTIAL	20	20	236.00 WWL MABEL		
168 CLARE AVE	CU	CU	3.50 EWL HSE	4.0 W S/C	RECONNECT SERVICE
RESIDENTIAL	20	20	308.00 EEL FISHER		
167 CLARE AVE	CU	CU	1.50 EWL HSE	1.5 E S/C	RECONNECT SERVICE
RESIDENTIAL	20	20	188.00 WWL MABEL		
164 CLARE AVE	CU	CU	1.52 E W/L HSE	3.0 E S/C	RECONNECT SERVICE
RESIDENTIAL	20	20	361.50 EEL ECCLES		
163 CLARE AVE	CU	CU	0.81 E W/L HSE	OPP S/C	RECONNECT SERVICE
RESIDENTIAL	20	20	137.50 WWL MABEL		
160 CLARE AVE	CU	CU	4.00 EWL HSE	3.0 W S/C	RECONNECT SERVICE
RESIDENTIAL	20	20	409.00 EEL FISHER		
159 CLARE AVE	CU	CU	4.50 EWL HSE	OPP S/C	RECONNECT SERVICE
RESIDENTIAL	20	20	85.50 WWL MABEL		



NOTE: VALVES TO BE INSTALLED COUNTER-CLOCKWISE TO CLOSE

FOR INDEX SEE D-16245

METRIC  
WHOLE NUMBERS INDICATE MILLIMETRES  
DECIMALIZED NUMBERS INDICATE METRES

**ENGINEERS GEOSCIENTISTS MANITOBA**  
Certificate of Authorization  
Stantec Consulting Ltd.  
No. 1301

LOCATION APPROVED UNDERGROUND STRUCTURES

SUPV. U/G STRUCTURES COMMITTEE DATE

NOTE:  
LOCATION OF UNDERGROUND STRUCTURES AS SHOWN ARE BASED ON THE BEST INFORMATION AVAILABLE BUT NO GUARANTEE IS GIVEN THAT ALL EXISTING UTILITIES ARE SHOWN OR THAT THE GIVEN LOCATIONS ARE EXACT. CONFIRMATION OF EXISTENCE AND EXACT LOCATION OF ALL SERVICES MUST BE OBTAINED FROM THE INDIVIDUAL UTILITIES BEFORE PROCEEDING WITH CONSTRUCTION.

B.M. 53-31 ELEV. 232.097	N.W. Cor. Baltimore Rd. & Hoy St., Brass plug in 14.8m Conc. pile, 2.4m E. of W.L. Hoy St., 2.4m S. of N.L. Baltimore Rd.		
NO.	REVISIONS	DATE	BY
01	ISSUED FOR TENDER	2022.04.22	RS

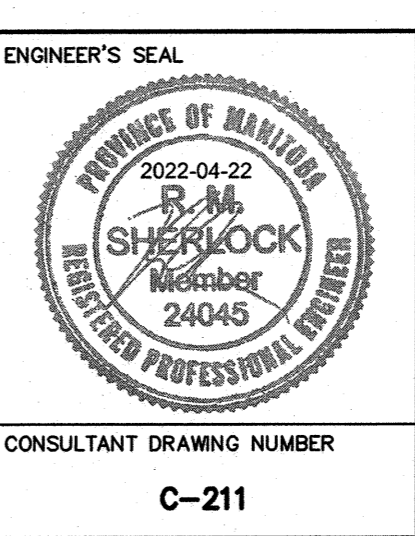
**Stantec**

DESIGNED BY: RS  
CHECKED BY: RS  
DRAWN BY: OS  
APPROVED BY: RS

SCALE:  
HORIZONTAL: 1:250  
VERTICAL: 1:50

DATE: 2022.03.01

RELEASED FOR CONSTRUCTION  
DATE: APR 22 2022



**THE CITY OF WINNIPEG**  
WATER AND WASTE DEPARTMENT  
ENGINEERING DIVISION

2022 WATERMAIN RENEWALS  
CONTRACT 5  
CLARE AVENUE  
27.5 E OF FISHER STREET TO  
24.9 W OF MABEL STREET

SHEET 13 OF 16  
CITY DRAWING NUMBER  
D-16256

C-211