

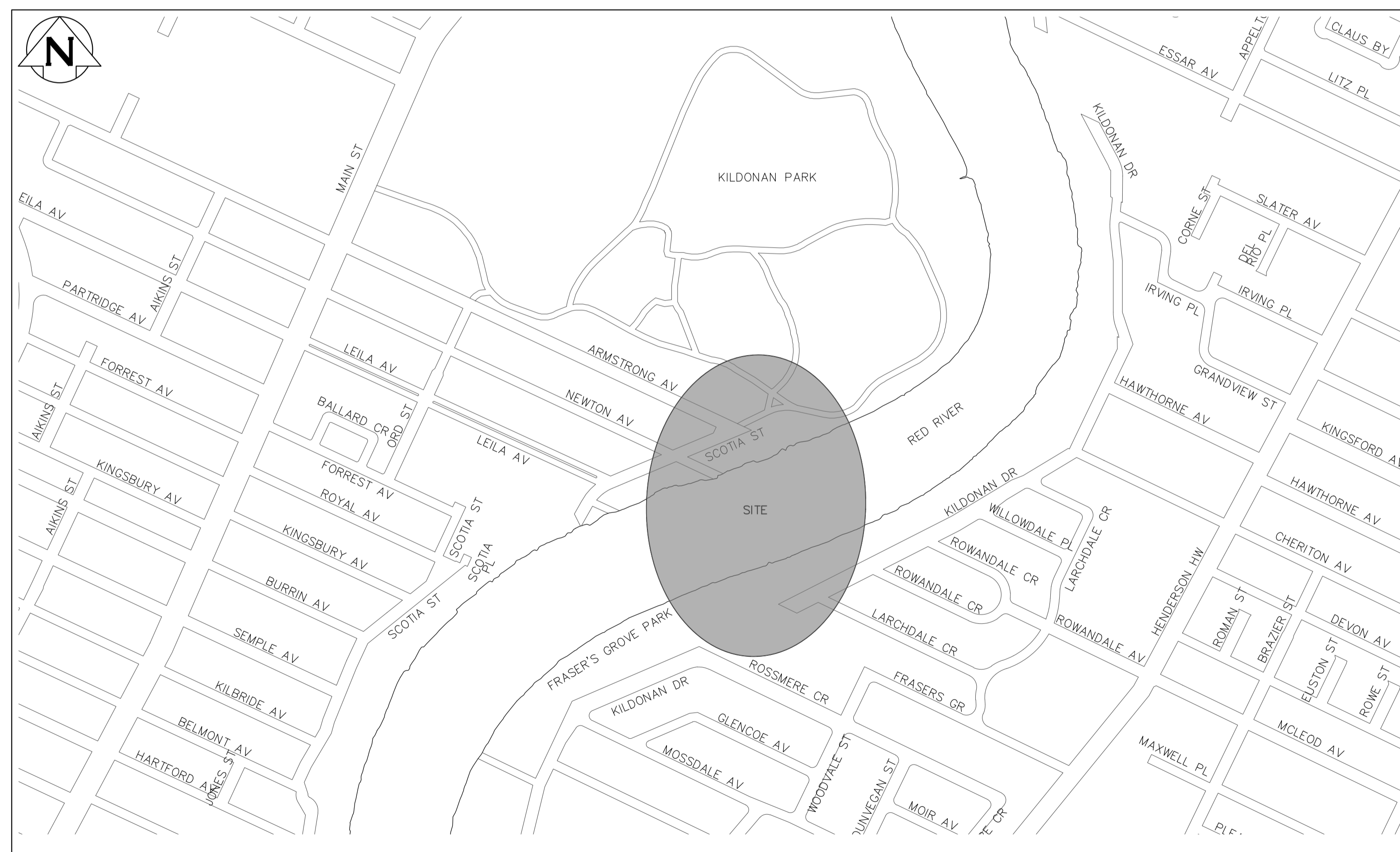


# THE CITY OF WINNIPEG

WATER AND WASTE DEPARTMENT  
ENGINEERING DIVISION

## NEWTON FORCE MAIN RIVER CROSSING REPLACEMENT

BID OPPORTUNITY 814-2022



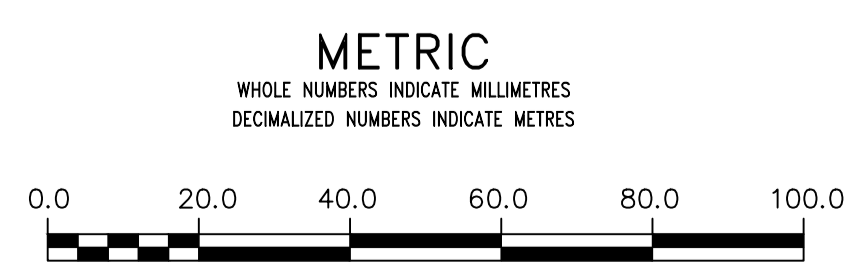




PLAN  
SCALE 1:1000

**PRELIMINARY**  
NOT TO BE USED FOR CONSTRUCTION

FOR INDEX PAGE  
SEE DWG \_\_\_\_\_



**WARNING**  
IF POWER EQUIPMENT OR EXPLOSIVES ARE TO BE USED FOR EXCAVATION ON THIS PROJECT THE CONTRACTOR MUST:  
1) NOTIFY THE GAS COMPANY OF THE PROPOSED LOCATION OF EXCAVATION.  
2) TAKE PRECAUTION TO AVOID DAMAGE TO GAS COMPANY INSTALLATIONS.  
SEE PROVINCIAL REGULATION 210/72 FOR DETAILS

LOCATION APPROVED UNDERGROUND STRUCTURES  
SUPV. U/G STRUCTURES COMMITTEE DATE  
NOTE:  
LOCATION OF UNDERGROUND STRUCTURES AS SHOWN ARE BASED ON THE BEST INFORMATION AVAILABLE BUT NO GUARANTEE IS GIVEN THAT ALL EXISTING UTILITIES ARE SHOWN OR THAT THE GIVEN LOCATIONS ARE EXACT. CONFIRMATION OF EXISTENCE AND EXACT LOCATION OF ALL SERVICES MUST BE OBTAINED FROM THE INDIVIDUAL UTILITIES BEFORE PROCEEDING WITH CONSTRUCTION.

B.M.	ELEV.				
C		ISSUED FOR 95% REVIEW	2022 10 13	RBO	
B		ISSUED FOR 66% REVIEW	2022 08 16	RBO	
A		ISSUED FOR 33% REVIEW	2022 07 11	RBO	
NO.		REVISIONS	DATE	BY	

**KGS GROUP** **AE Associated Engineering**

DESIGNED BY: TLE (KGS)  
CHECKED BY:  
DRAWN BY: GEL (KGS)  
APPROVED BY:  
SCALE: HORIZONTAL 1:1000, VERTICAL -  
DATE: 2022 10 13  
PLOT DATE: 2022 10 13

ENGINEER'S SEAL  
CONSULTANT DRAWING NUMBER  
22-0107-21\_C202

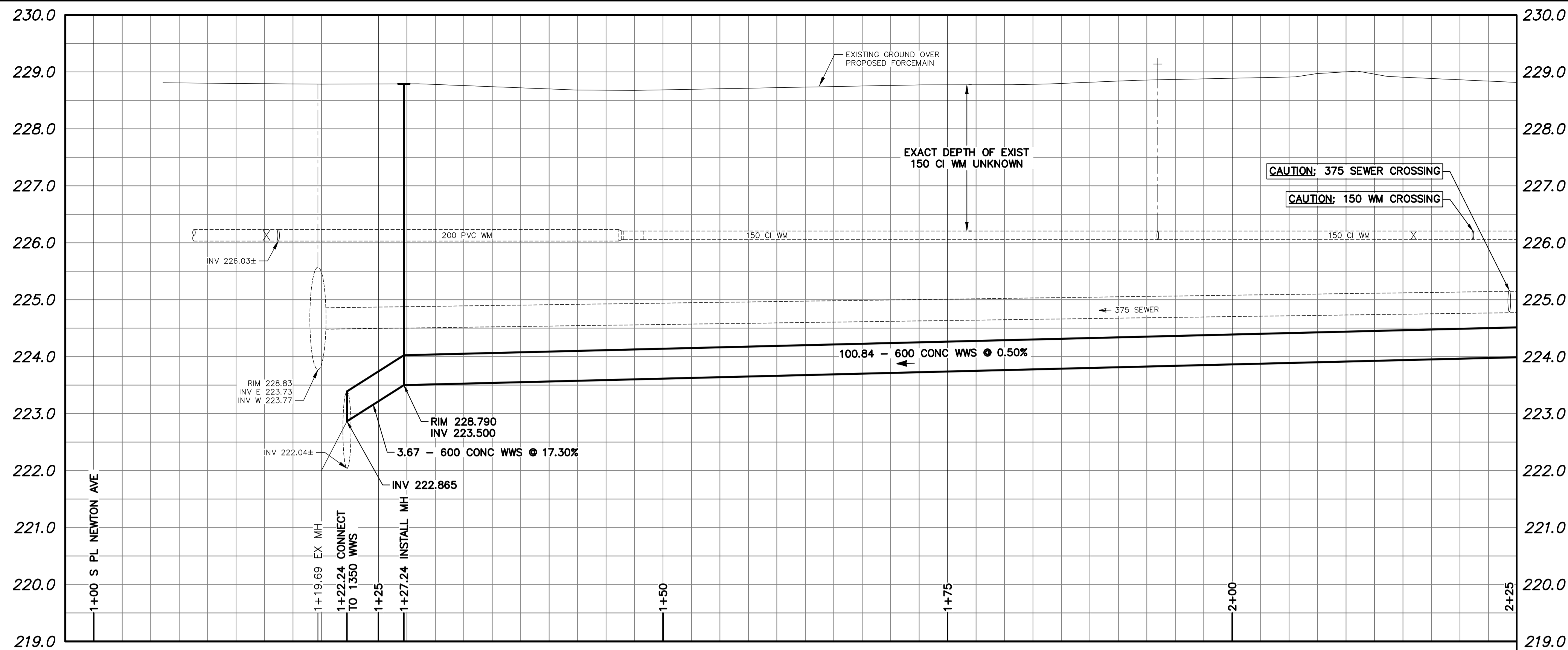
**Winnipeg** THE CITY OF WINNIPEG  
WATER AND WASTE DEPARTMENT  
ENGINEERING DIVISION

NEWTON FORCE MAIN  
RIVER CROSSING REPLACEMENT  
KEYPLAN

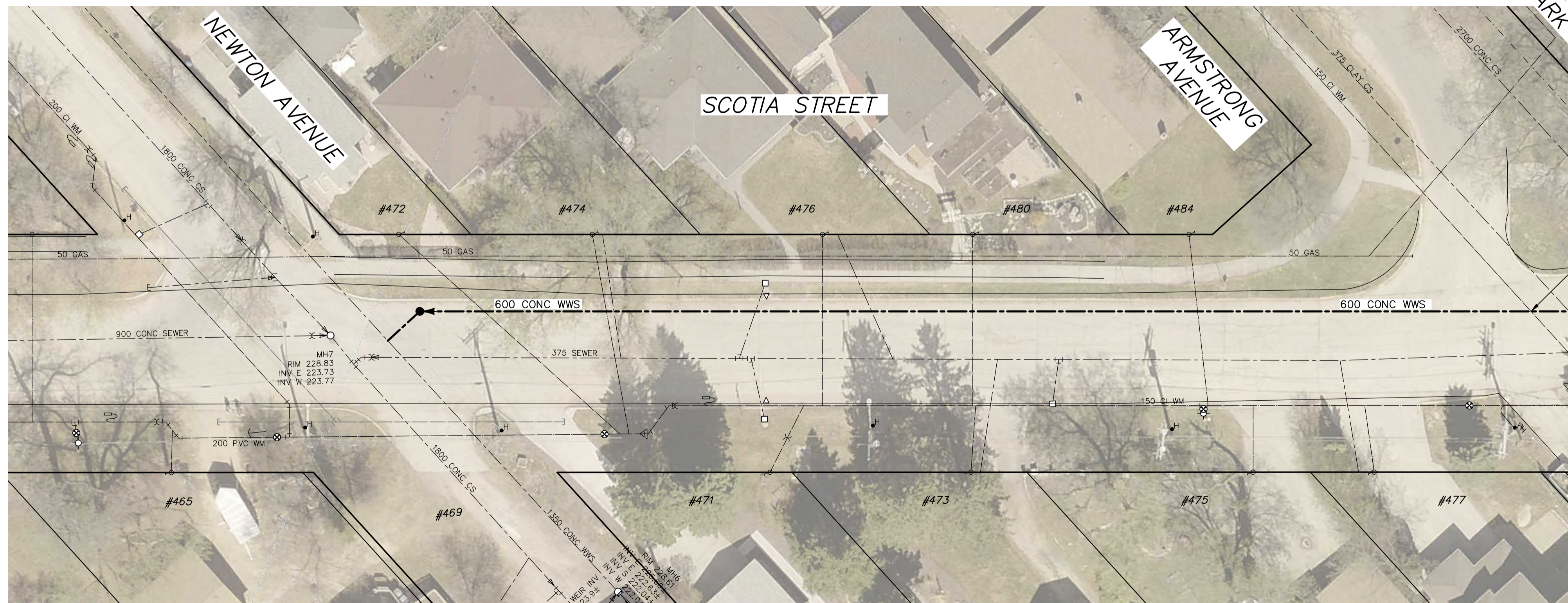
SHEET **X** OF **X**  
CITY DRAWING NUMBER: -

BID OPPORTUNITY: XXX-2022B  
CONTRACT NUMBER:  
FILE PATH: P:\Projects\2022\22-0107-021\Drawg\Mun\  
FILE NAME: 22-0107-021\_CALL.gwg





NOTE: CHAINAGES SHOWN ARE ALONG W P SCOTIA STREET

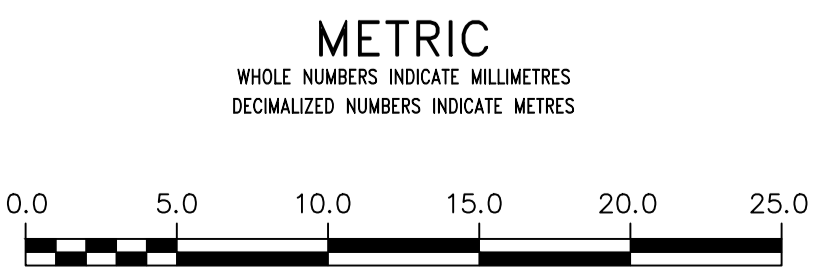


CAUTION: 150 WM CROSSING  
CAUTION: 375 SEWER CROSSING

MATCHLINE

**PRELIMINARY**  
NOT TO BE USED FOR CONSTRUCTION

FOR INDEX PAGE  
SEE DWG \_\_\_\_\_



**WARNING**  
IF POWER EQUIPMENT OR EXPLOSIVES ARE TO BE USED FOR EXCAVATION ON THIS PROJECT THE CONTRACTOR MUST:  
1) NOTIFY THE GAS COMPANY OF THE PROPOSED LOCATION OF EXCAVATION.  
2) TAKE PRECAUTION TO AVOID DAMAGE TO GAS COMPANY INSTALLATIONS.  
SEE PROVINCIAL REGULATION 21072 FOR DETAILS

**LOCATION APPROVED UNDERGROUND STRUCTURES**  
SUPV. U/G STRUCTURES COMMITTEE DATE \_\_\_\_\_  
NOTE:  
LOCATION OF UNDERGROUND STRUCTURES AS SHOWN ARE BASED ON THE BEST INFORMATION AVAILABLE BUT NO GUARANTEE IS GIVEN THAT ALL EXISTING UTILITIES ARE SHOWN OR THAT THE GIVEN LOCATIONS ARE EXACT. CONFIRMATION OF EXISTENCE AND EXACT LOCATION OF ALL SERVICES MUST BE OBTAINED FROM THE INDIVIDUAL UTILITIES BEFORE PROCEEDING WITH CONSTRUCTION.

B.M. ELEV.	NO.	REVISIONS	DATE	BY
	C	ISSUED FOR 95% REVIEW	2022 10 13	RBO
	B	ISSUED FOR 66% REVIEW	2022 08 16	RBO
	A	ISSUED FOR 33% REVIEW	2022 07 11	RBO

**KGS GROUP** **AE Associated Engineering**

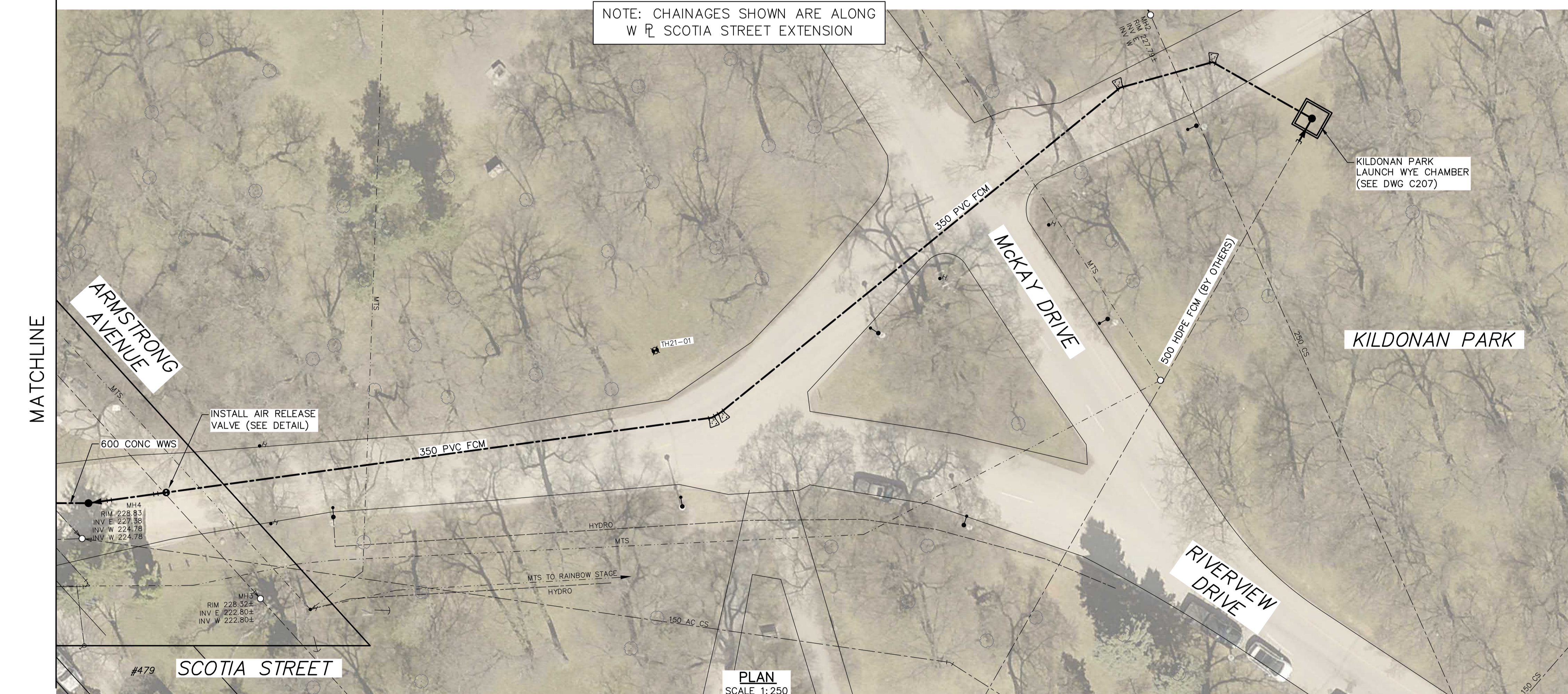
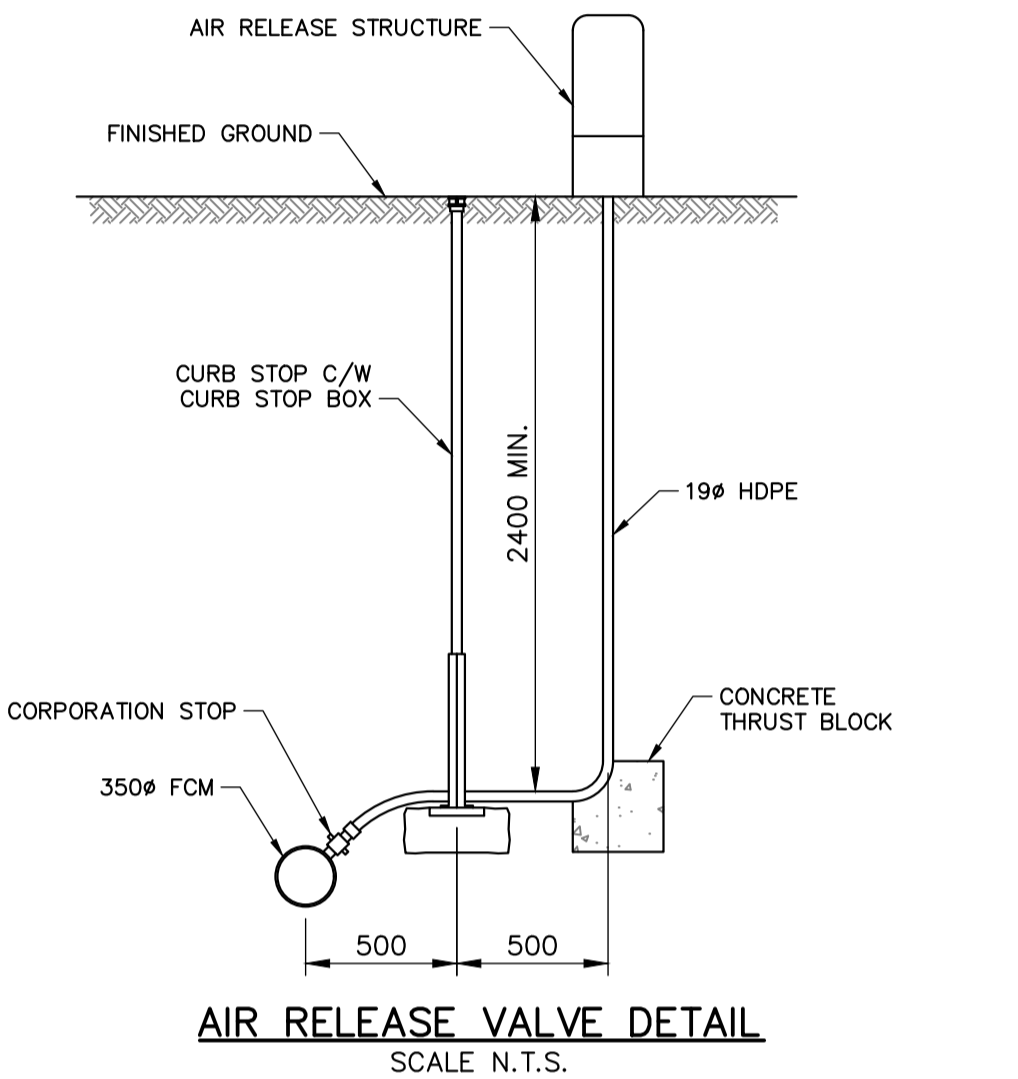
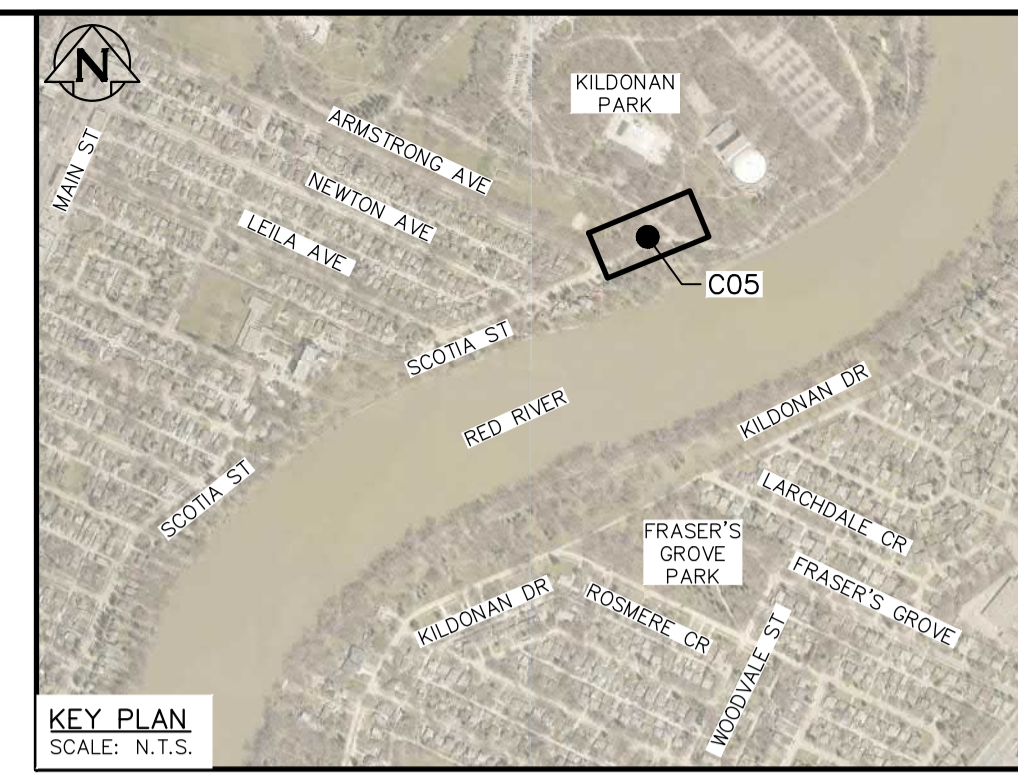
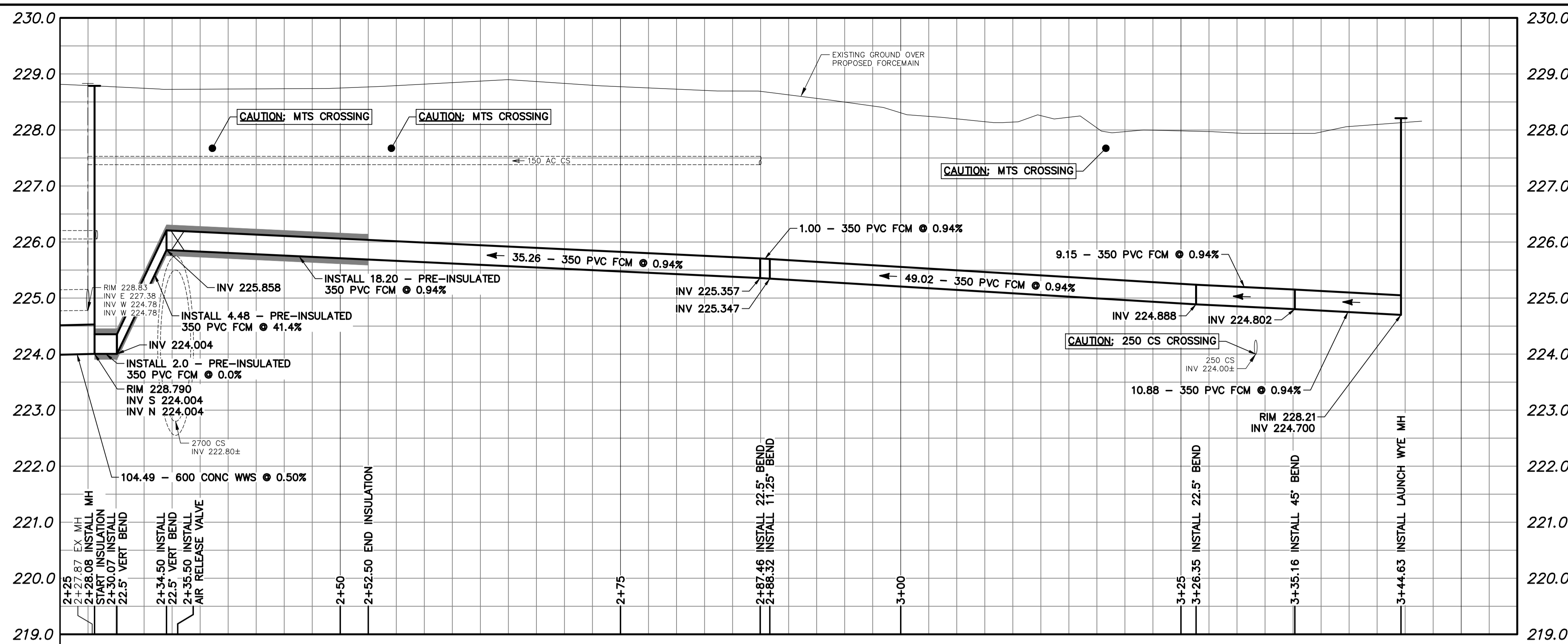
DESIGNED BY: TLE (KGS)  
CHECKED BY: \_\_\_\_\_  
DRAWN BY: GEL (KGS)  
APPROVED BY: \_\_\_\_\_  
SCALE: HORIZONTAL 1:250  
VERTICAL -  
DATE: 2022 10 13  
PLOT DATE: 2022 10 13

ENGINEER'S SEAL  
CONSULTANT DRAWING NUMBER  
22-0107-21\_C204

**THE CITY OF WINNIPEG**  
WATER AND WASTE DEPARTMENT  
ENGINEERING DIVISION

**NEWTON FORCE MAIN  
RIVER CROSSING REPLACEMENT  
SCOTIA STREET SEWER  
SHEET 1**

SHEET  X  
CITY DRAWING NUMBER: \_\_\_\_\_



**PRELIMINARY**  
NOT TO BE USED FOR CONSTRUCTION

FOR INDEX PAGE  
SEE DWG \_\_\_\_\_

**METRIC**  
WHOLE NUMBERS INDICATE MILLIMETRES  
DECIMALIZED NUMBERS INDICATE METRES



**WARNING**  
IF POWER EQUIPMENT OR EXPLOSIVES ARE TO BE USED FOR EXCAVATION ON THIS PROJECT THE CONTRACTOR MUST:  
1) NOTIFY THE GAS COMPANY OF THE PROPOSED LOCATION OF EXCAVATION.  
2) TAKE PRECAUTION TO AVOID DAMAGE TO GAS COMPANY INSTALLATIONS.  
SEE PROVINCIAL REGULATION 21072 FOR DETAILS

**LOCATION APPROVED**  
UNDERGROUND STRUCTURES  
SUPV. U/G STRUCTURES COMMITTEE DATE  
NOTE:  
LOCATION OF UNDERGROUND STRUCTURES AS SHOWN ARE BASED ON THE BEST INFORMATION AVAILABLE BUT NO GUARANTEE IS GIVEN THAT ALL EXISTING UTILITIES ARE SHOWN OR THAT THE GIVEN LOCATIONS ARE EXACT. CONFIRMATION OF EXISTENCE AND EXACT LOCATION OF ALL SERVICES MUST BE OBTAINED FROM THE INDIVIDUAL UTILITIES BEFORE PROCEEDING WITH CONSTRUCTION.

B.M. ELEV.	NO.	REVISIONS	DATE	BY
	C	ISSUED FOR 95% REVIEW	2022 10 13	RBO
	B	ISSUED FOR 66% REVIEW	2022 08 16	RBO
	A	ISSUED FOR 33% REVIEW	2022 07 11	RBO

**KGS GROUP** **AE Associated Engineering**

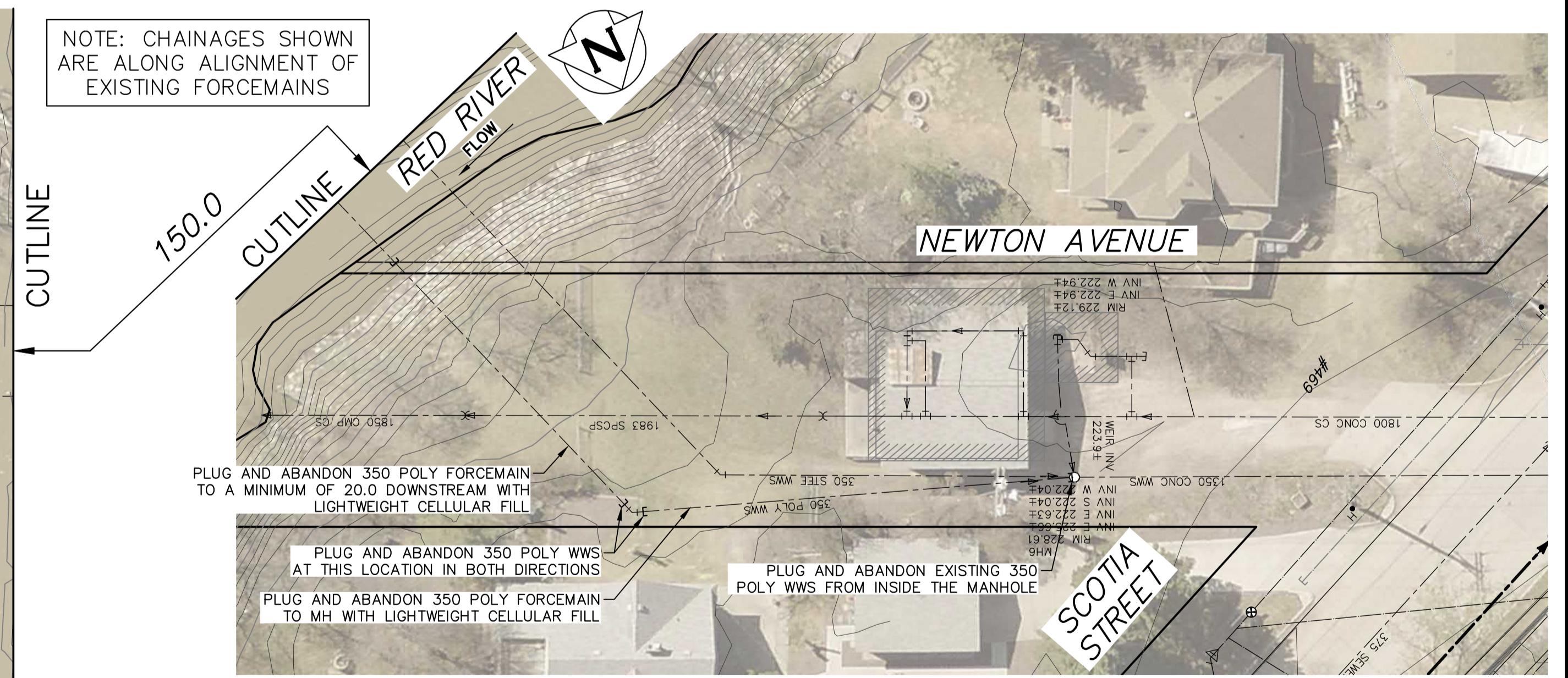
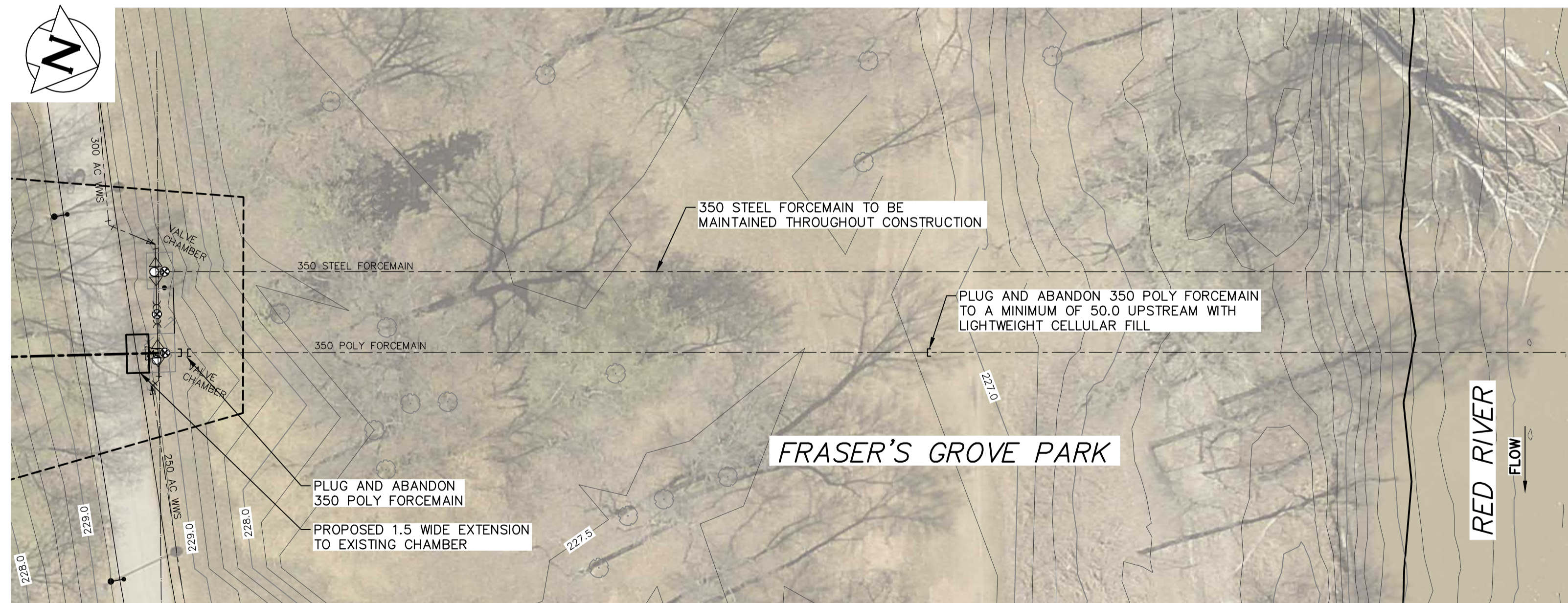
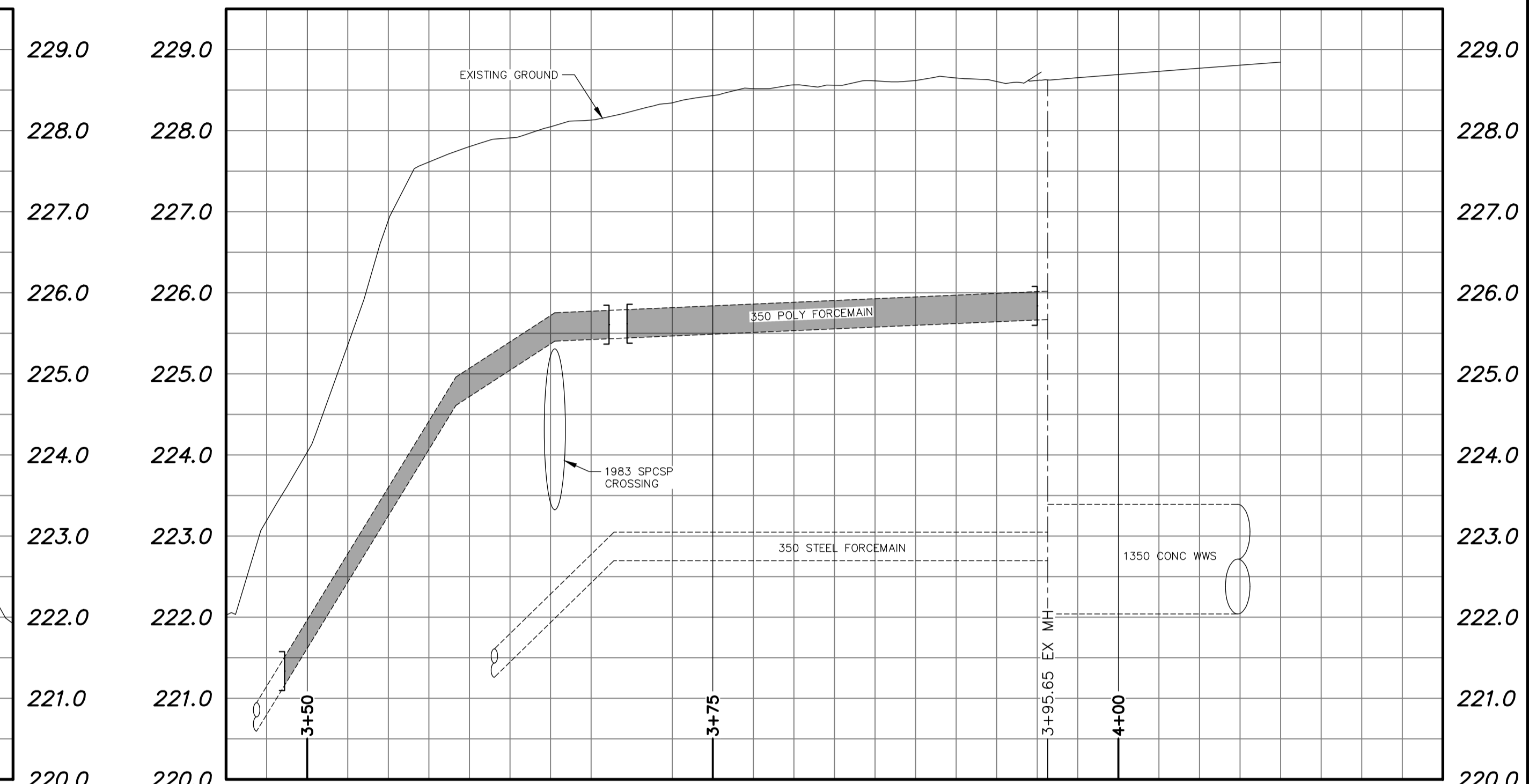
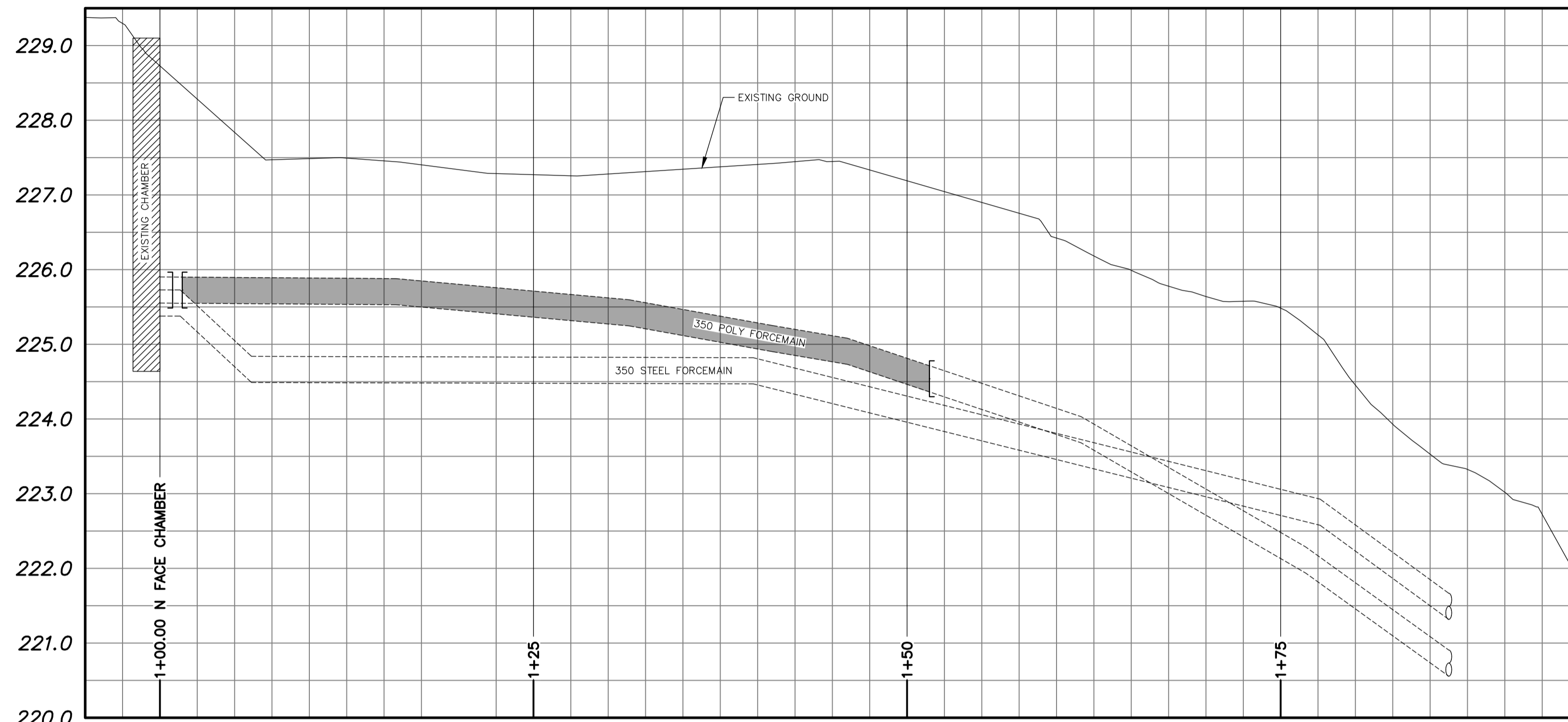
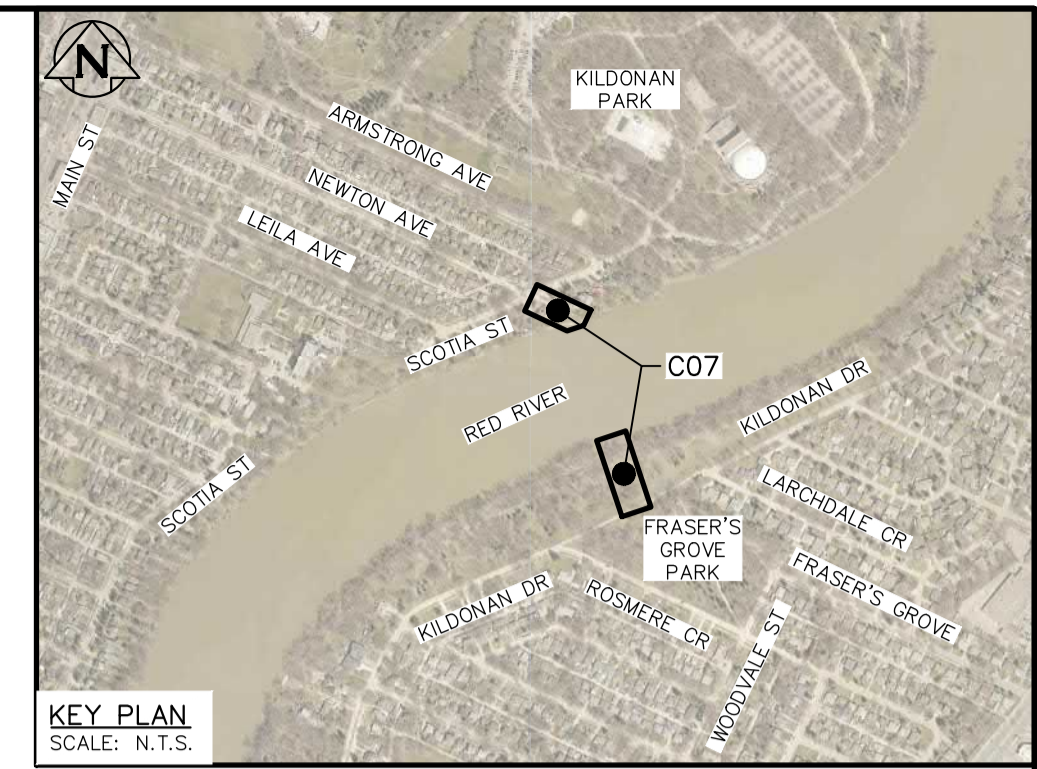
DESIGNED BY: TLE (KGS)  
CHECKED BY:  
DRAWN BY: GEL (KGS)  
APPROVED BY:  
SCALE: HORIZONTAL 1:250, VERTICAL -  
DATE: 2022 10 13

ENGINEER'S SEAL  
CONSULTANT DRAWING NUMBER  
22-0107-21\_C205

**THE CITY OF WINNIPEG**  
WATER AND WASTE DEPARTMENT  
ENGINEERING DIVISION

NEWTON FORCE MAIN  
RIVER CROSSING REPLACEMENT  
SCOTIA STREET SEWER  
SHEET 2

SHEET  X  
CITY DRAWING NUMBER: -



PLAN  
SCALE 1:250

**PRELIMINARY**  
NOT TO BE USED FOR CONSTRUCTION

FOR INDEX PAGE  
SEE DWG \_\_\_\_\_

METRIC  
WHOLE NUMBERS INDICATE MILLIMETRES  
DECIMALIZED NUMBERS INDICATE METRES



**WARNING**  
IF POWER EQUIPMENT OR EXPLOSIVES ARE TO BE USED FOR EXCAVATION ON THIS PROJECT THE CONTRACTOR MUST:  
1) NOTIFY THE GAS COMPANY OF THE PROPOSED LOCATION OF EXCAVATION.  
2) TAKE PRECAUTION TO AVOID DAMAGE TO GAS COMPANY INSTALLATIONS.  
SEE PROVINCIAL REGULATION 210/72 FOR DETAILS

LOCATION APPROVED  
UNDERGROUND STRUCTURES  
SUPV. U/G STRUCTURES COMMITTEE DATE  
NOTE:  
LOCATION OF UNDERGROUND STRUCTURES AS SHOWN ARE BASED ON THE BEST INFORMATION AVAILABLE BUT NO GUARANTEE IS GIVEN THAT ALL EXISTING UTILITIES ARE SHOWN OR THAT THE GIVEN LOCATIONS ARE EXACT. CONFIRMATION OF EXISTENCE AND EXACT LOCATION OF ALL SERVICES MUST BE OBTAINED FROM THE INDIVIDUAL UTILITIES BEFORE PROCEEDING WITH CONSTRUCTION.

B.M. ELEV.	NO.	REVISIONS	DATE	BY
	C	ISSUED FOR 95% REVIEW	2022 10 13	RBO
	B	ISSUED FOR 66% REVIEW	2022 08 16	RBO
	A	ISSUED FOR 33% REVIEW	2022 07 11	RBO

**KGS GROUP** **AE Associated Engineering**

DESIGNED BY: TLE (KGS)  
CHECKED BY:  
DRAWN BY: GEL (KGS)  
APPROVED BY:  
RELEASED FOR CONSTRUCTION  
SCALE: HORIZONTAL 1:250  
VERTICAL -  
DATE: 2022 10 13

ENGINEER'S SEAL  
CONSULTANT DRAWING NUMBER  
22-0107-21\_C206

**THE CITY OF WINNIPEG**  
WATER AND WASTE DEPARTMENT  
ENGINEERING DIVISION

NEWTON FORCE MAIN  
RIVER CROSSING REPLACEMENT  
EXISTING FORCEMAIN  
ABANDONMENT AND CHAMBER MODIFICATIONS

SHEET **X** OF **X**  
CITY DRAWING NUMBER





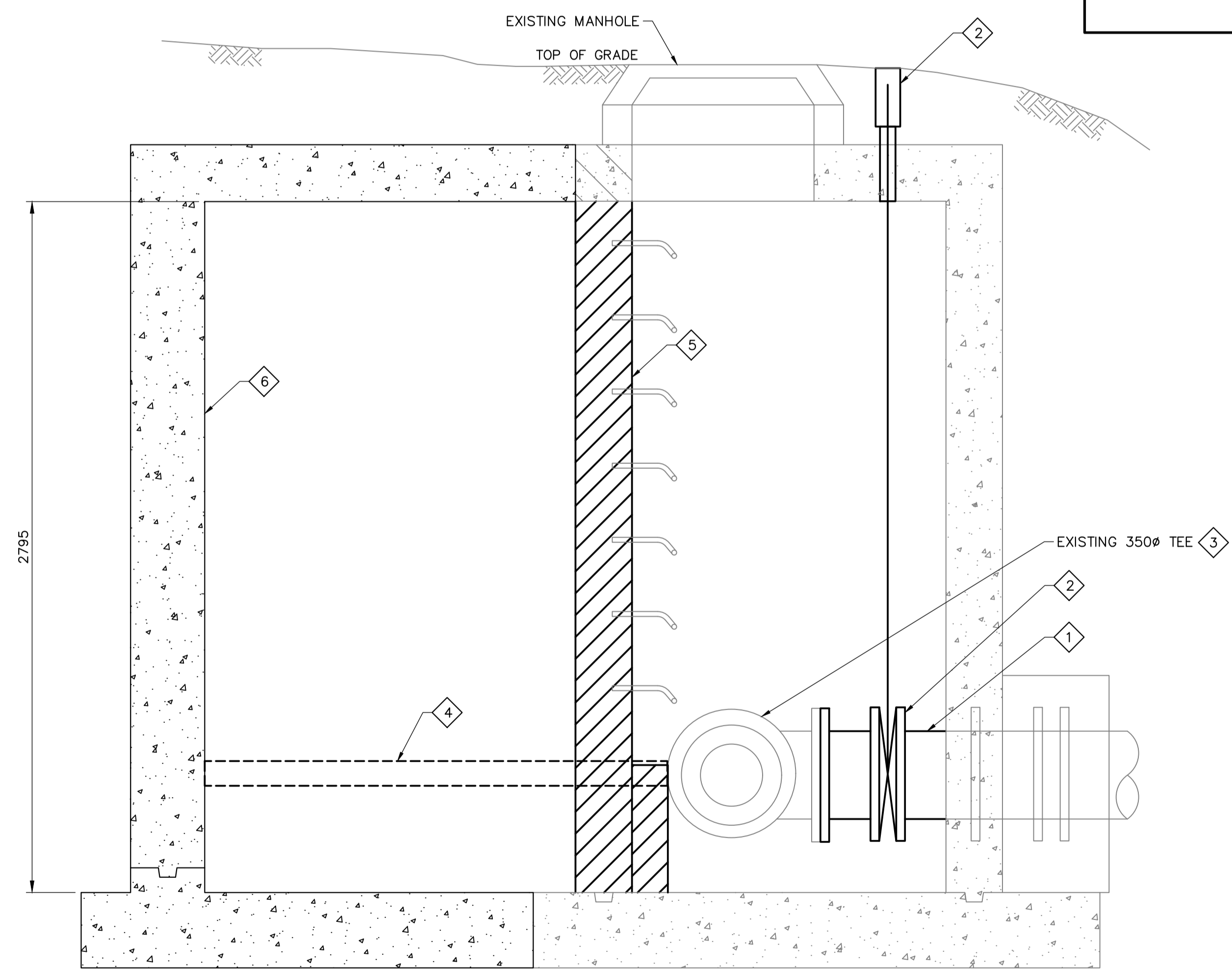
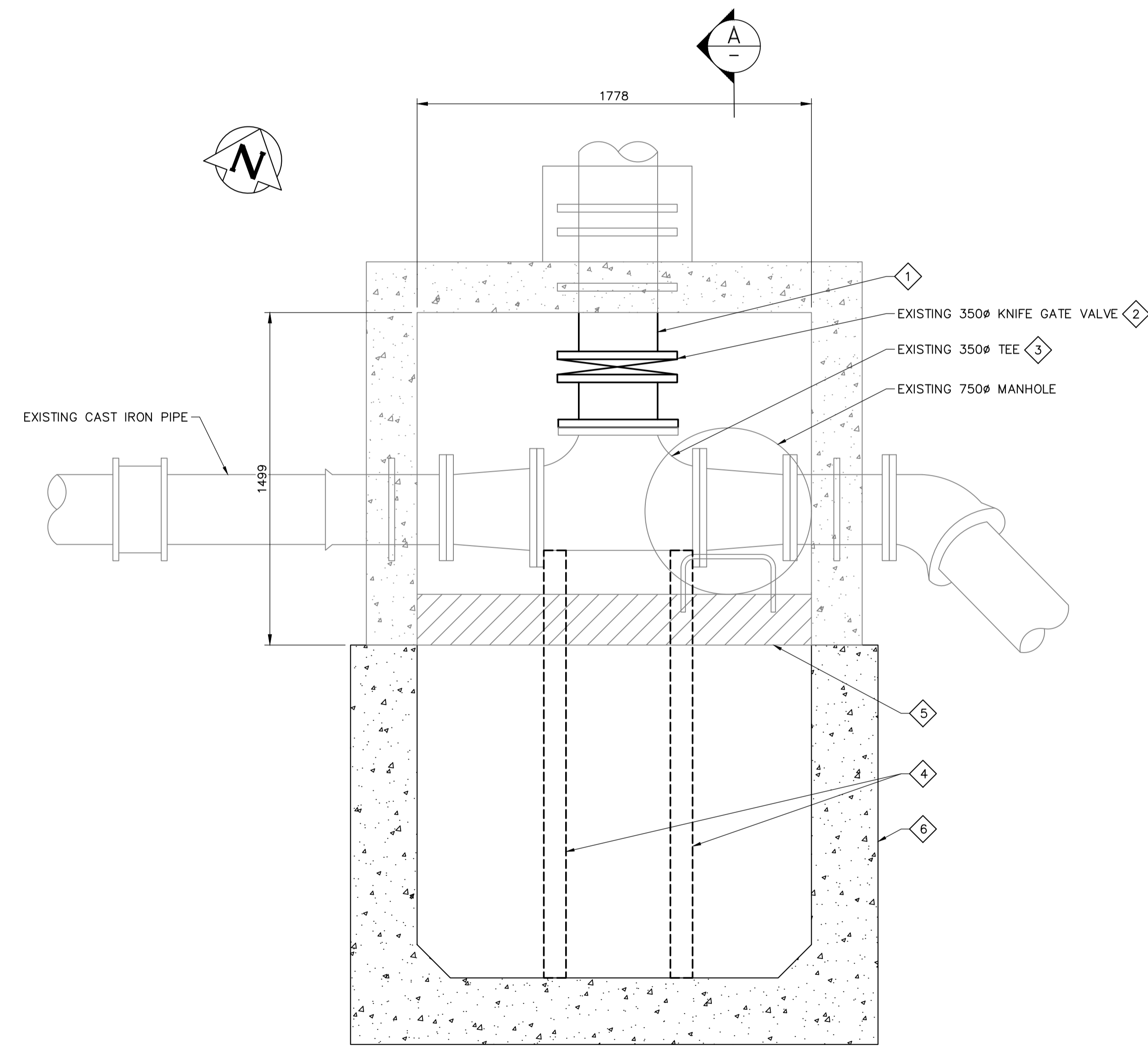
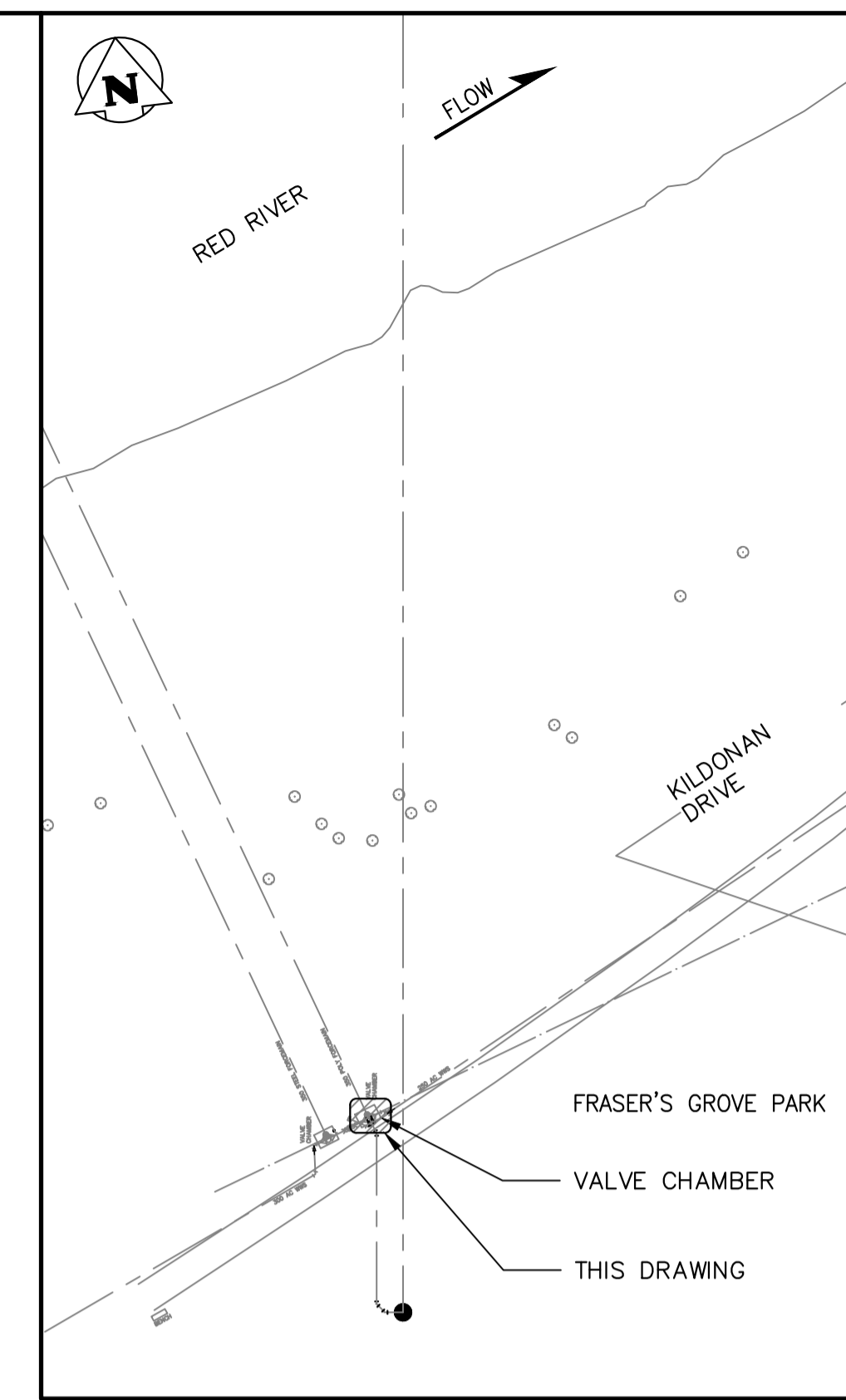
**GENERAL NOTES:**

1. CONFORM TO ALL APPLICABLE CODES AND STANDARDS, INCLUDING AWWA/ANSI C600 (INSTALLATION OF DUCTILE IRON MAINS AND THEIR APPURTENANCES) AND AWWA/ANSI C906 (POLYETHYLENE PRESSURE PIPE AND FITTINGS).
2. DIMENSIONS AND LAYOUT IS APPROXIMATE ONLY. ALL DIMENSIONS AND LAYOUT MUST BE CONFIRMED BY THE CONTRACTOR BEFORE COMMENCING WORK.

**KEYNOTES:**

1. DEMOLISH Ø350 WALL PIECE FROM THE NORTH CHAMBER WALL. CAP REMAINING PIPE OUTSIDE CHAMBER AND ABANDON IN PLACE. MAKE GOOD WALL PENETRATION - REFER TO STRUCTURAL DRAWING S02 FOR DETAILS.
2. REMOVE AND RETAIN EXISTING Ø350 KNIFE GATE VALVE FOR RE-USE DURING NEW CONSTRUCTION. CLEAN AND SERVICE THE GATE VALVE PRIOR TO RE-INSTALLATION. CONTRACTOR TO SUPPLY NEW STEM AND VALVE BOX EQUIVALENT TO EXISTING.
3. ROTATE EXISTING 350 TEE 180° SUCH THAT BRANCH OUTLET IS ALIGNED WITH NEW FORCE MAIN SOUTH OF CHAMBER. INSTALL NEW GASKETS.
4. TEMPORARY THRUST RESTRAINTS TO BE INSTALLED PRIOR TO DEMOLITION OF THE EXISTING SOUTH CHAMBER WALL. TEMPORARY RESTRAINTS MAY BE REMOVED AFTER NEW CONCRETE THRUST BLOCK HAS CURED SUFFICIENTLY. REFER TO STRUCTURAL DRAWINGS S02.
5. PARTIAL DEMOLITION OF THE EXISTING CONCRETE WALL AND THRUST BLOCK. REFER TO STRUCTURAL DRAWING S02.
6. NEW CHAMBER EXTENSION, REFER TO STRUCTURAL DRAWING S02

LEGEND	
	EXISTING PIPE/VALVES/EQUIPMENT
	EXISTING PIPING/VALVES TO BE REMOVED OR MODIFIED



KEYPLAN  
N.T.S.

FOR INDEX PAGE  
SEE DWG \_\_\_\_\_

PLAN  
SCALE 1:15

SECTION A-A  
SCALE 1:15

METRIC  
WHOLE NUMBERS INDICATE MILLIMETRES  
DECIMALIZED NUMBERS INDICATE METRES

LOCATION APPROVED UNDERGROUND STRUCTURES  SUPV. U/G STRUCTURES COMMITTEE DATE  NOTE: LOCATION OF UNDERGROUND STRUCTURES AS SHOWN ARE BASED ON THE BEST INFORMATION AVAILABLE BUT NO GUARANTEE IS GIVEN THAT ALL EXISTING UTILITIES ARE SHOWN OR THAT THE GIVEN LOCATIONS ARE EXACT. CONFIRMATION OF EXISTENCE AND EXACT LOCATION OF ALL SERVICES MUST BE OBTAINED FROM THE INDIVIDUAL UTILITIES BEFORE PROCEEDING WITH CONSTRUCTION.		B.M. ELEV.		ENGINEER'S SEAL   CONSULTANT DRAWING NUMBER 22-0107-021_M201	THE CITY OF WINNIPEG WATER AND WASTE DEPARTMENT ENGINEERING DIVISION  NEWTON FORCE MAIN RIVER CROSSING REPLACEMENT  MECHANICAL - DEMOLITION SOUTH CHAMBER EXPANSION	SHEET X OF X CITY DRAWING NUMBER -
DESIGNED BY: BP (KGS) DRAWN BY: GEL (KGS) SCALE: HORIZONTAL AS NOTED VERTICAL NA DATE: 2022 10 13	CHECKED BY: APPROVED BY: RELEASED FOR CONSTRUCTION DATE:	ISSUED FOR 95% REVIEW DATE: 2022 10 13 BY: RBD	PLOT DATE: 2022 10 13	BID OPPORTUNITY: XXX-2022B	FILE PATH: P:\Projects\2022\22-0107-021\Drawg\Mun\	

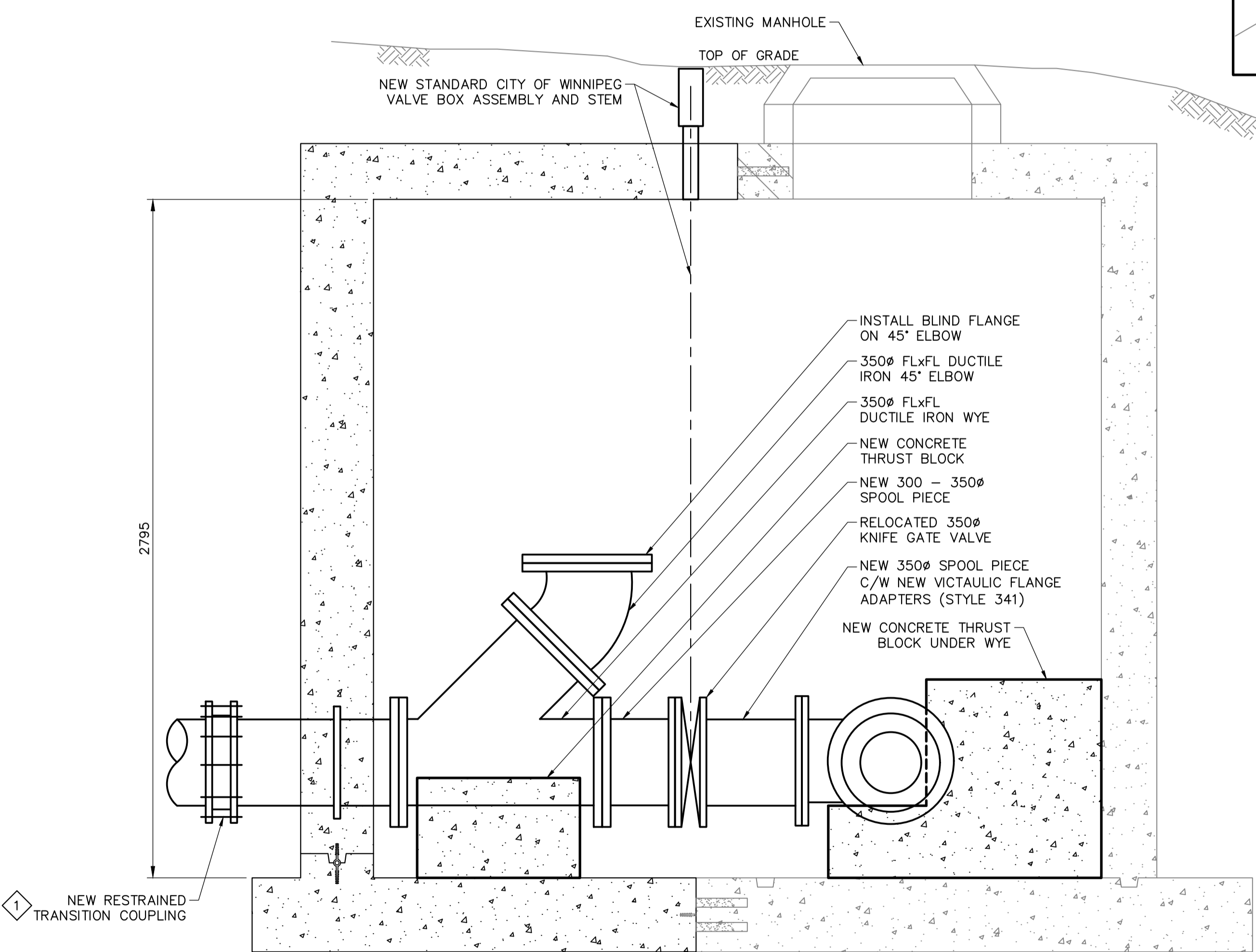
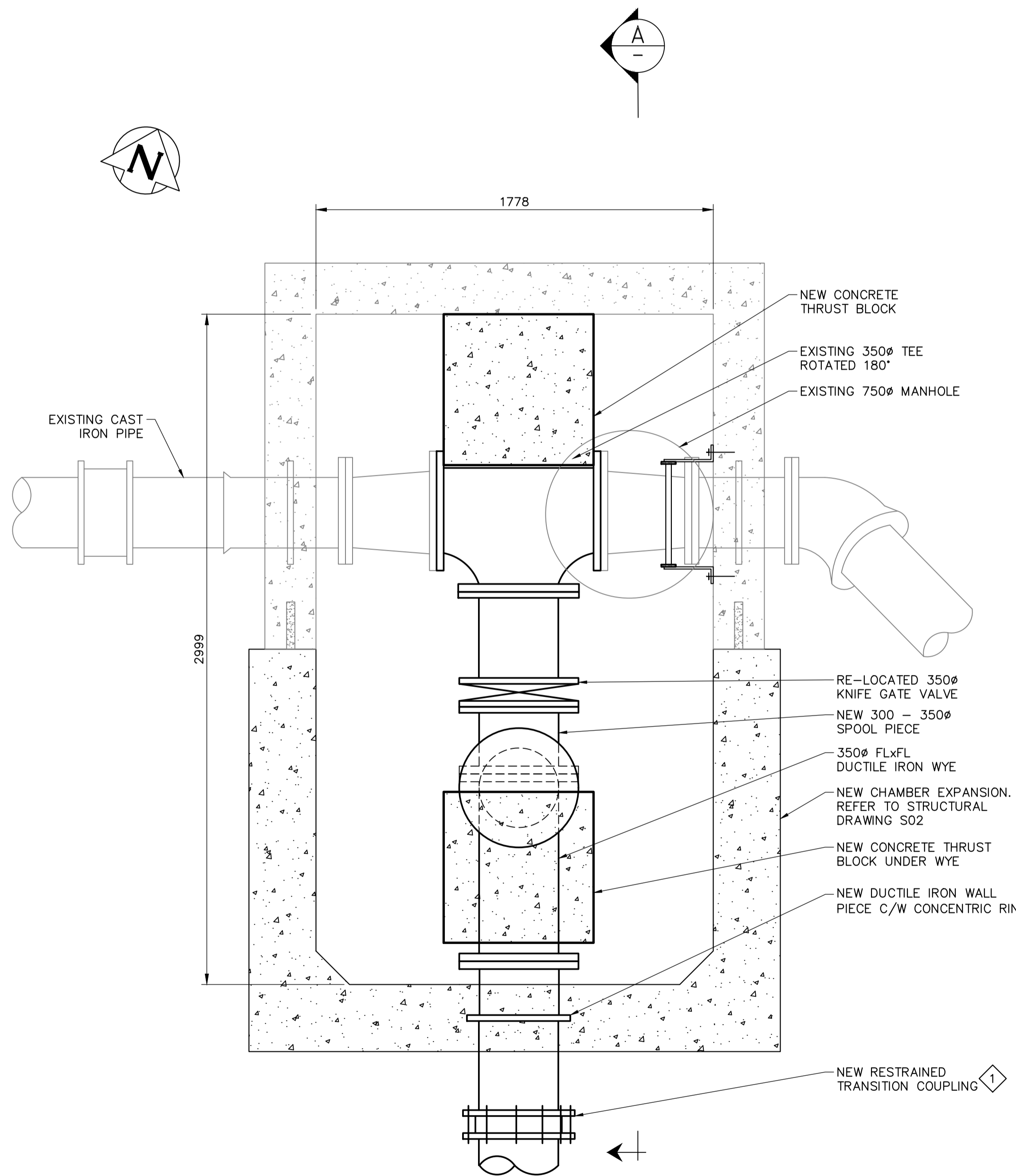
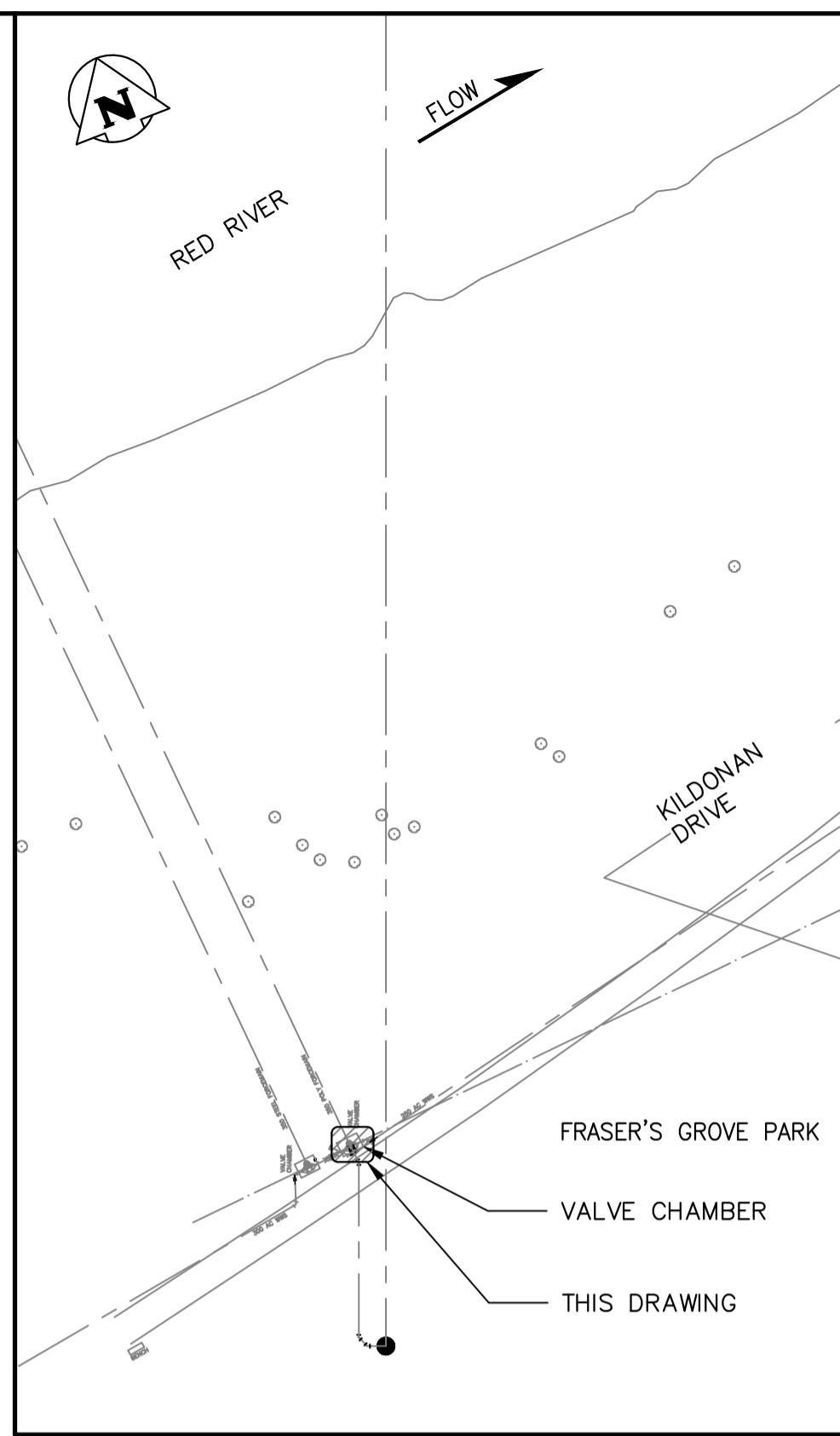
**GENERAL NOTES:**

- CONFORM TO ALL APPLICABLE CODES AND STANDARDS, INCLUDING AWWA/ANSI C600 (INSTALLATION OF DUCTILE IRON MAINS AND THEIR APPURTENANCES).
- DIMENSIONS AND LAYOUT IS APPROXIMATE ONLY. ALL DIMENSIONS AND LAYOUT MUST BE CONFIRMED BY THE CONTRACTOR BEFORE COMMENCING WORK.
- CONTRACTOR TO CONFIRM THAT RE-USED VALVES AND FITTINGS ARE OF ACCEPTABLE QUALITY AND FIT FOR USE AFTER THEY HAVE BEEN CLEANED AND SERVICED. IF THE CONTRACTOR DEEMS THAT THE FITTINGS AND VALVES CANNOT BE SALVAGED, AN RFI (REQUEST FOR INFORMATION) MUST BE SENT TO THE CONTRACT ADMINISTRATOR.

**KEYNOTES:**

- NEW RESTRAINED TRANSITION COUPLING TO BE DESIGNED TO AWWA C219 STANDARDS.

LEGEND	
	EXISTING PIPE/VALVES/EQUIPMENT
	NEW PIPING/VALVES



FOR INDEX PAGE  
SEE DWG \_\_\_\_\_

**METRIC**  
WHOLE NUMBERS INDICATE MILLIMETRES  
DECIMALIZED NUMBERS INDICATE METRES

LOCATION APPROVED UNDERGROUND STRUCTURES SUPV. U/G STRUCTURES COMMITTEE DATE NOTE: LOCATION OF UNDERGROUND STRUCTURES AS SHOWN ARE BASED ON THE BEST INFORMATION AVAILABLE BUT NO GUARANTEE IS GIVEN THAT ALL EXISTING UTILITIES ARE SHOWN OR THAT THE GIVEN LOCATIONS ARE EXACT. CONFIRMATION OF EXISTENCE AND EXACT LOCATION OF ALL SERVICES MUST BE OBTAINED FROM THE INDIVIDUAL UTILITIES BEFORE PROCEEDING WITH CONSTRUCTION.		B.M. ELEV.		ENGINEER'S SEAL CONSULTANT DRAWING NUMBER 22-0107-021_M202	THE CITY OF WINNIPEG WATER AND WASTE DEPARTMENT ENGINEERING DIVISION NEWTON FORCE MAIN RIVER CROSSING REPLACEMENT MECHANICAL - CONSTRUCTION SOUTH CHAMBER EXPANSION	SHEET X OF X CITY DRAWING NUMBER -
DESIGNED BY: BP (KGS) DRAWN BY: GEL (KGS) SCALE: HORIZONTAL AS NOTED VERTICAL NA DATE: 2022 10 13	CHECKED BY: APPROVED BY: RELEASED FOR CONSTRUCTION DATE:	ISSUED FOR 95% REVIEW 2022 10 13 RBD	PLOT DATE: 2022 10 13	BID OPPORTUNITY: XXX-2022B FILE PATH: P:\Projects\2022\22-0107-021\Drawg\Mun\		



