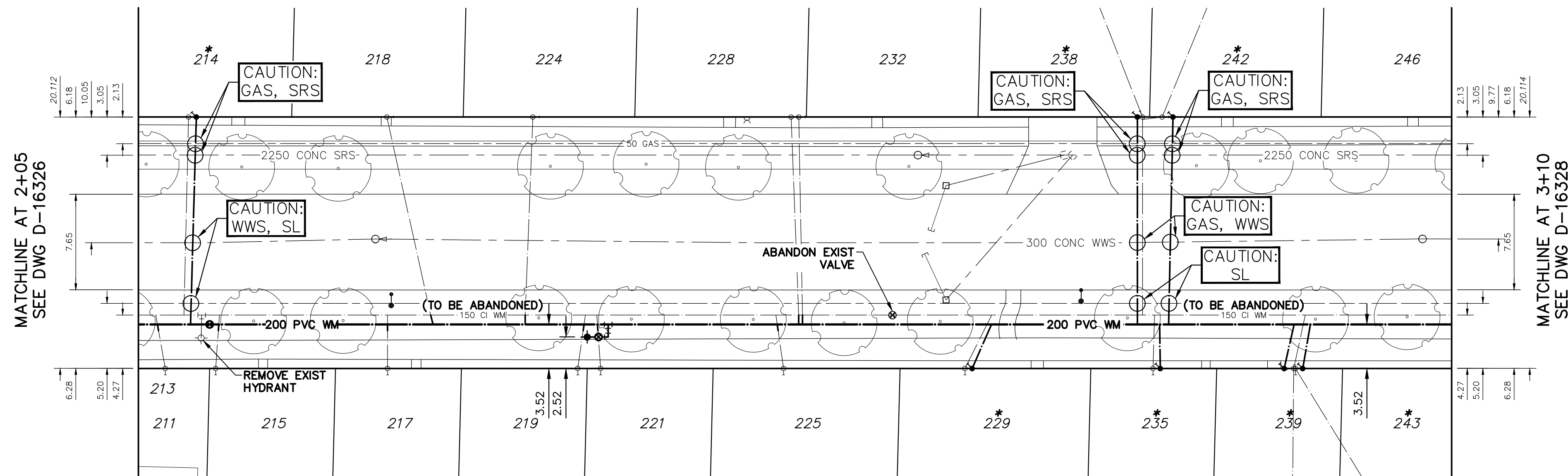


NOTE: CHAINAGES SHOWN ARE ALONG E.  $\rho$  OF SPENCE ST

SPENCE STREET



WATER SERVICE INFORMATION

ADDRESS	SIZE (mm) MATERIAL (STREET)	SIZE (mm) MATERIAL (PROP.)	SHORT & LONG MEASUREMENT	CORP. LOCATION	REMARKS
211 SPENCE ST	20	20	9.2 SNL HSE	2.5 S OF S/C	RECONNECT SERVICE
RESIDENTIAL	CU	CU	UNKN		
*214 SPENCE ST	12	12	5>NNL CELLAR WINDOW	OPP S/C	RENEW SERVICE
RESIDENTIAL	LEAD	LEAD	488>NNL BROADWAY		
215 SPENCE ST	20	20	4>NNL HSE #213	1' N OF S/C	RECONNECT SERVICE
RESIDENTIAL	CU	CU	493>NNL BROADWAY		
217 SPENCE ST	20	20	7' NSL HSE	OPP S/C	RECONNECT SERVICE
RESIDENTIAL	CU	CU	UNKN		
218 SPENCE ST	20	12	8' NSL HSE		
RESIDENTIAL	CU	LEAD	540>NNL BROADWAY	11'6" N OF S/C	RECONNECT SERVICE
219 SPENCE ST	20	20	1>NNL HSE	2 N OF S/C	RECONNECT SERVICE
RESIDENTIAL	CU	CU	UNKN		
221 SPENCE ST	20	20	7' SSL HSE	1 S OF S/C	RECONNECT SERVICE
RESIDENTIAL	CU	CU	598>NNL BROADWAY		
224 SPENCE ST	20	12	13.5 NSL HSE	2 S OF S/C	RECONNECT SERVICE
RESIDENTIAL	CU	LEAD	87' N 1ST HYDT N BROADWAY		
225 SPENCE ST	20	12	11.5 NSL HSE	2 N OF S/C	RECONNECT SERVICE
RESIDENTIAL	CU	LEAD	646>NNL BROADWAY		
228 SPENCE ST	20	20	1.5>NNL HSE	2 N OF S/C	RECONNECT SERVICE
RESIDENTIAL	CU	CU	648>NNL BROADWAY		
*229 SPENCE ST	12	12	4' SSL DOOR	7 N OF S/C	RENEW SERVICE
RESIDENTIAL	LEAD	LEAD	726' SSL PORTAGE		
232 SPENCE ST	20	20	4.5' SSL HSE	2.5 N OF S/C	RECONNECT SERVICE
RESIDENTIAL	CU	CU	648>NNL BROADWAY		
*235 SPENCE ST	12	12	12.5 SNL BLDG	OPP S/C	RENEW SERVICE
RESIDENTIAL	LEAD	LEAD	688' SSL PORTAGE		
*238 SPENCE ST	20	20	3.5' NNL #238	OPP S/C	RENEW SERVICE
RESIDENTIAL	UNKN	UNKN	216' S 1ST HYDT S PORTAGE		
*239 SPENCE ST	16	20	3.9m SNLL	10' S OF S/C	RENEW SERVICE
RESIDENTIAL	LEAD	CU	639' SSL PORTAGE		
*242 SPENCE ST	20	20	3.5' SSL OF #242		
RESIDENTIAL	UNKN	CU	215' S 1ST HYDT S PORTAGE	OPP S/C	RENEW SERVICE W/ 238 SPENCE
*243 SPENCE ST	16	12	3.8m SNLL	649' SSL PORTAGE	RENEW SERVICE
RESIDENTIAL	LEAD	LEAD	UNKN		DOUBLE SERVICE W/ 239 SPENCE

\*SERVICES TO BE RENEWED TO  $\rho$ . ALL OTHERS TO BE RECONNECTED

NOTE: ALL VALVES TO BE INSTALLED COUNTERCLOCKWISE TO CLOSE

METRIC  
WHOLE NUMBERS INDICATE MILLIMETRES  
DECIMALIZED NUMBERS INDICATE METRES



WARNING

IF POWER EQUIPMENT OR EXPLOSIVES ARE TO BE USED FOR EXCAVATION ON THIS PROJECT THE CONTRACTOR MUST:

- 1) NOTIFY THE GAS COMPANY OF THE PROPOSED LOCATION OF EXCAVATION.
- 2) TAKE PRECAUTION TO AVOID DAMAGE TO GAS COMPANY INSTALLATIONS.

SEE PROVINCIAL REGULATION 21072 FOR DETAILS

LOCATION APPROVED UNDERGROUND STRUCTURES

SUPV. U/G STRUCTURES COMMITTEE DATE

NOTE:  
LOCATION OF UNDERGROUND STRUCTURES AS SHOWN ARE BASED ON THE BEST INFORMATION AVAILABLE BUT NO GUARANTEE IS GIVEN THAT ALL EXISTING UTILITIES ARE SHOWN OR THAT THE GIVEN LOCATIONS ARE EXACT. CONFIRMATION OF EXISTENCE AND EXACT LOCATION OF ALL SERVICES MUST BE OBTAINED FROM THE INDIVIDUAL UTILITIES BEFORE PROCEEDING WITH CONSTRUCTION.

B.M. ELEV.

NO.	REVISIONS	DATE	BY
C	ISSUED FOR TENDER	22/05/12	R.H.
B	DETAILED DESIGN SUBMISSION	22/05/03	R.H.
A	PRELIMINARY DESIGN SUBMISSION	22/04/22	R.H.



1600 Buffalo Place  
Winnipeg, Manitoba  
R3T 6B8 Canada  
Phone: 204-477-6650  
Fax: 204-474-2864  
wsp.com

DESIGNED BY	K.G.	CHECKED BY	S.M.
DRAWN BY	K.G.	APPROVED BY	S.M.
DATE	2022 05 12	RELEASED FOR CONSTRUCTION	

ENGINEER'S SEAL

CONSULTANT DRAWING NUMBER  
221-02275-00-09



THE CITY OF WINNIPEG  
WATER AND WASTE DEPARTMENT  
ENGINEERING DIVISION

2022 WATER MAIN RENEWALS - CONTRACT 9

SHEET 09 OF 10

SPENCE STREET  
145.2>NNL BROADWAY  
135.1' SSL ST MARY AVENUE

CITY DRAWING NUMBER

D-16327