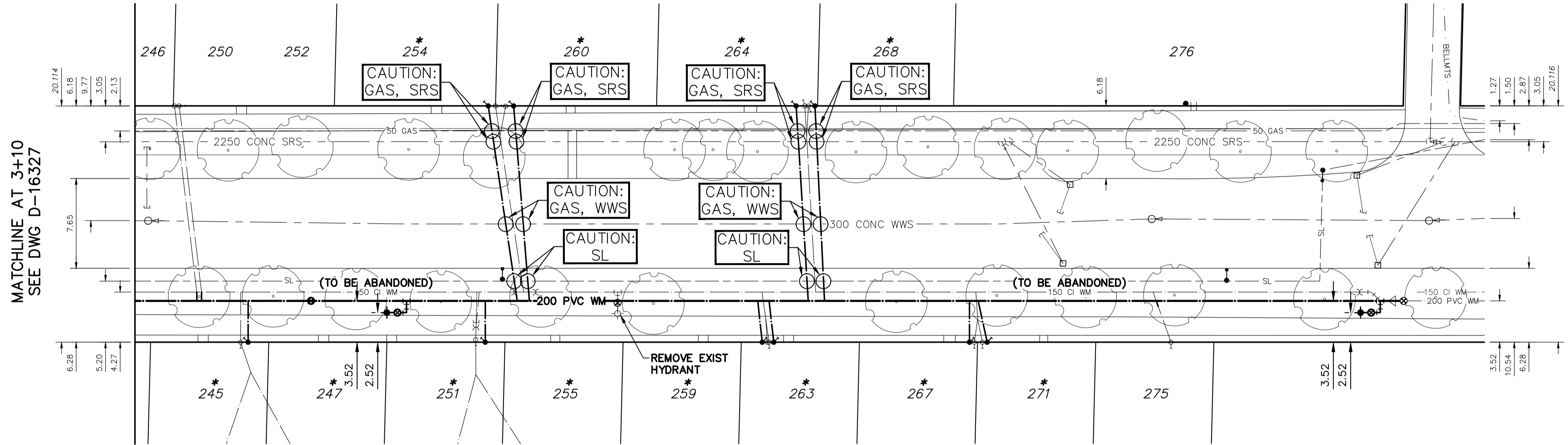


NOTE: CHAINAGES SHOWN ARE ALONG E. P. OF SPENCE ST

SPENCE STREET



WATER SERVICE INFORMATION

ADDRESS	SIZE (mm) MATERIAL (STREET)	SIZE (mm) MATERIAL (PROP.)	SHORT & LONG MEASUREMENT	CORP. LOCATION	REMARKS
*245 SPENCE ST	16	12	7 SNL OF HSE	OPP S/C	RENEW SERVICE
RESIDENTIAL	LEAD	LEAD	581 SSL PORTAGE		DOUBLE SERVICE W/ 247 SPENCE
246 SPENCE ST	20	20	0.1m NNLL	1.9m N OF S/C	RECONNECT SERVICE
RESIDENTIAL	CU	CU	UNKN		
*247 SPENCE ST	16	12	7 SNL OF HSE	OPP S/C	RENEW SERVICE
RESIDENTIAL	LEAD	LEAD	681 SSL PORTAGE		DOUBLE SERVICE W/ 245 SPENCE
250 SPENCE ST	20	20	0.5m NSPL	1.9m N OF S/C	RECONNECT SERVICE
RESIDENTIAL	CU	CU	UNKN		DOUBLE SERVICE W/ 252 SPENCE
*251 SPENCE ST	16/20	12	2.5m SNLL	0.2m N OF S/C	RENEW SERVICE
RESIDENTIAL	LEAD/CU	LEAD	515' SSL PORTAGE		DOUBLE SERVICE W/ 255 SPENCE
252 SPENCE ST	20	20	0.5m NSPL	1.9m N OF S/C	RECONNECT SERVICE
RESIDENTIAL	CU	CU	UNKN		DOUBLE SERVICE W/ 250 SPENCE
*254 SPENCE ST	UNKN	12	1.5 SSL OF HSE #260	5 N OF S/C #260	RENEW SERVICE
RESIDENTIAL	UNKN	LEAD	36 N 1ST HYD S PORTAGE		DOUBLE SERVICE W/ 260 SPENCE
*255 SPENCE ST	16/20	12	2.5m SNLL	0.2m N OF S/C	RENEW SERVICE
RESIDENTIAL	LEAD/CU	LEAD	515' SSL PORTAGE		DOUBLE SERVICE W/ 251 SPENCE
*259 SPENCE ST	UNKN	12	1.5' SSL HSE #260	1.5' S OF S/C	RENEW SERVICE
RESIDENTIAL	UNKN	LEAD	UNKN		DOUBLE SERVICE W/ 263 SPENCE
*260 SPENCE ST	UNKN	12	4 SSL HSE #260	5 N OF S/C	RENEW SERVICE
RESIDENTIAL	UNKN	LEAD	36 N 1ST HYD S PORTAGE		DOUBLE SERVICE W/ 254 SPENCE
*263 SPENCE ST	UNKN	12	1' SSL HSE	2' S OF S/C	RENEW SERVICE
RESIDENTIAL	UNKN	LEAD	UNKN		DOUBLE SERVICE W/ 259 SPENCE
264 SPENCE ST	20	20	10.5' SSL OF HSE #268	3' N OF S/C	RENEW SERVICE
RESIDENTIAL	UNKN	LEAD	UNKN		DOUBLE SERVICE W/ 268 SPENCE
267 SPENCE ST	UNKN	12	4.5 NNL OF HSE	OPP S/C	RENEW SERVICE
RESIDENTIAL	XXX	LEAD	275 SSL PORTAGE		DOUBLE SERVICE W/ 217 SPENCE
268 SPENCE ST	20	20	1.85m SSRL	2' N OF S/C	RENEW SERVICE
RESIDENTIAL	CU	LEAD	9'6" SSL OF HSE		DOUBLE SERVICE W/ 264 SPENCE
271 SPENCE ST	UNKN	12	4 SSL OF HSE	275 S PORTAGE	RENEW SERVICE
RESIDENTIAL	UNKN	CU	271 S OF PORTAGE		DOUBLE SERVICE W/ 267 SPENCE
276 SPENCE ST	20	20	12 SNL OF HSE	5 S OF S/C	RECONNECT SERVICE
RESIDENTIAL	CU	CU	321 SSL PORTAGE		

*SERVICES TO BE RENEWED TO P. ALL OTHERS TO BE RECONNECTED

MATCHLINE AT 3+10
SEE DWG D-16327

NOTE: ALL VALVES TO BE INSTALLED COUNTERCLOCKWISE TO CLOSE

METRIC
WHOLE NUMBERS INDICATE MILLIMETRES
DECIMALIZED NUMBERS INDICATE METRES



WARNING

IF POWER EQUIPMENT OR EXPLOSIVES ARE TO BE USED FOR EXCAVATION ON THIS PROJECT THE CONTRACTOR MUST:

- NOTIFY THE GAS COMPANY OF THE PROPOSED LOCATION OF EXCAVATION.
- TAKE PRECAUTION TO AVOID DAMAGE TO GAS COMPANY INSTALLATIONS.

SEE PROVINCIAL REGULATION 21072 FOR DETAILS

LOCATION APPROVED
UNDERGROUND STRUCTURES

SUPV. U/G STRUCTURES COMMITTEE DATE

NOTE:

LOCATION OF UNDERGROUND STRUCTURES AS SHOWN ARE BASED ON THE BEST INFORMATION AVAILABLE BUT NO GUARANTEE IS GIVEN THAT ALL EXISTING UTILITIES ARE SHOWN OR THAT THE GIVEN LOCATIONS ARE EXACT. CONFIRMATION OF EXISTENCE AND EXACT LOCATION OF ALL SERVICES MUST BE OBTAINED FROM THE INDIVIDUAL UTILITIES BEFORE PROCEEDING WITH CONSTRUCTION.

B.M. ELEV.

C	ISSUED FOR TENDER	22/05/12	R.H.
B	DETAILED DESIGN SUBMISSION	22/05/03	R.H.
A	PRELIMINARY DESIGN SUBMISSION	22/04/22	R.H.
NO.	REVISIONS	DATE	BY

wsp

1600 Buffalo Place
Winnipeg, Manitoba
R3T 6B8 Canada
Phone: 204-477-6650
Fax: 204-474-2864
wsp.com

DESIGNED BY: K.G. CHECKED BY: S.M.
DRAWN BY: K.G. APPROVED BY: S.M.
RELEASED FOR CONSTRUCTION

DATE: 2022 05 12

ENGINEER'S SEAL

CONSULTANT DRAWING NUMBER
221-02275-00-10

THE CITY OF WINNIPEG
WATER AND WASTE DEPARTMENT
ENGINEERING DIVISION

2022 WATER MAIN RENEWALS – CONTRACT 9

SPENCE STREET
135.1 SSL ST MARY AVENUE
27.0 SSL ST MARY AVENUE

SHEET 10 OF 10
CITY DRAWING NUMBER
D-16328

ENGINEERS
GEOLOGICISTS
MANITOBA

Certificate of Authorization
WSP Canada Inc.
No. 5750