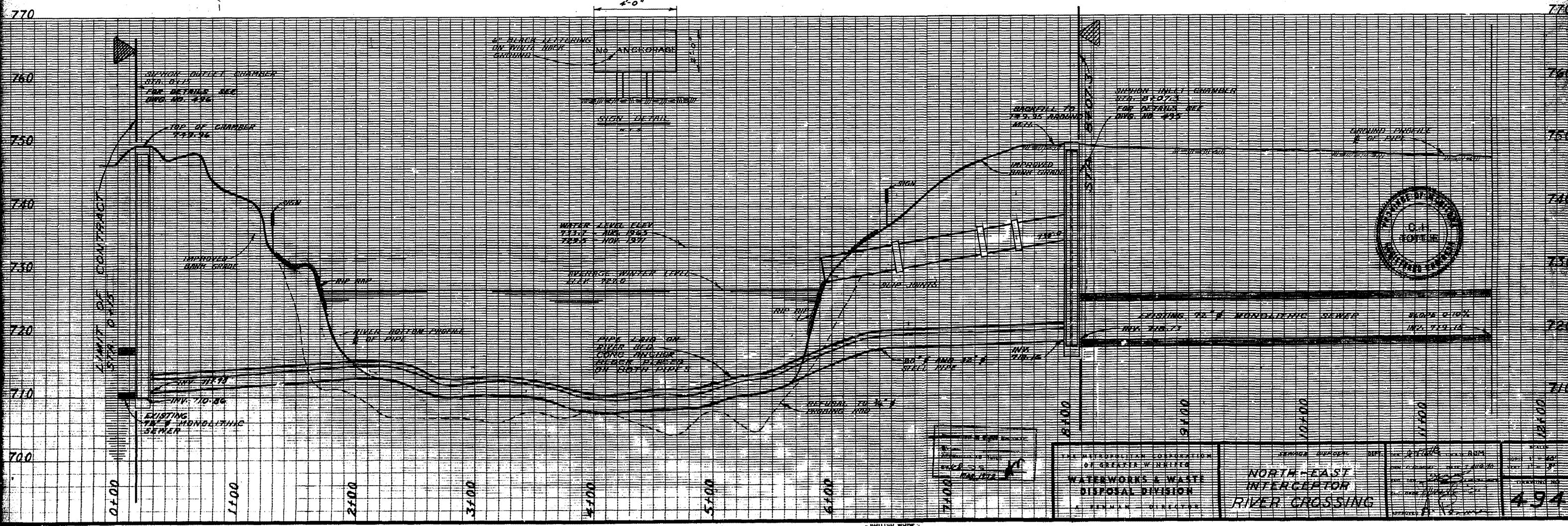
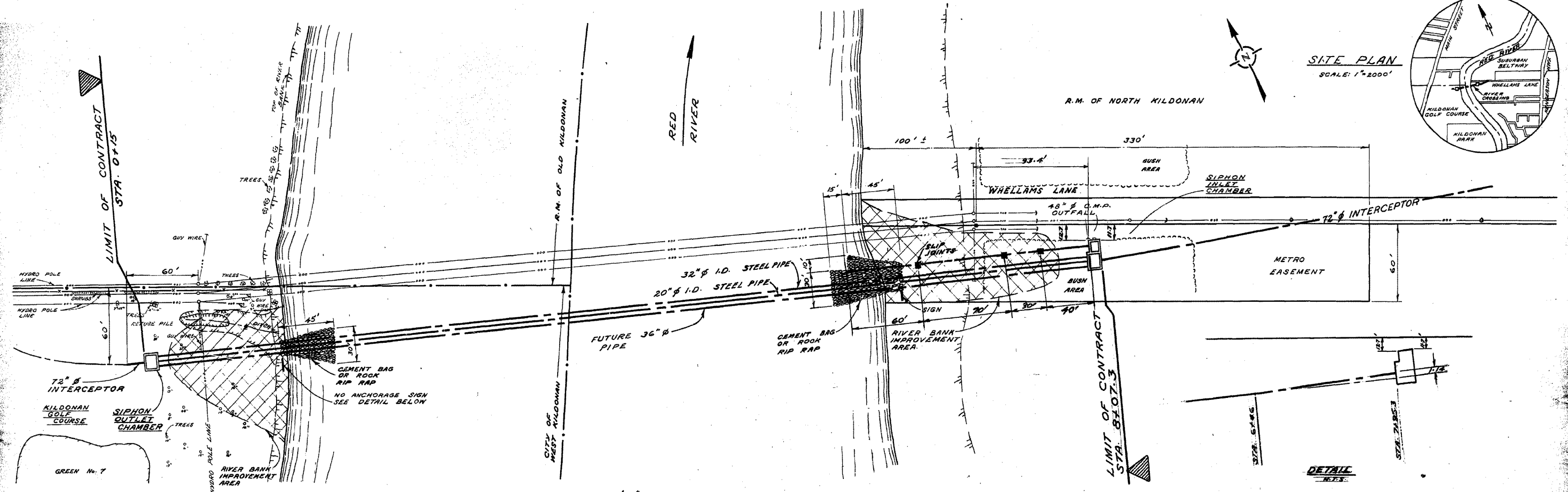
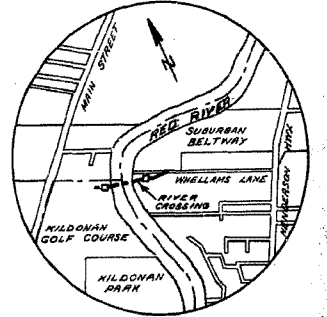
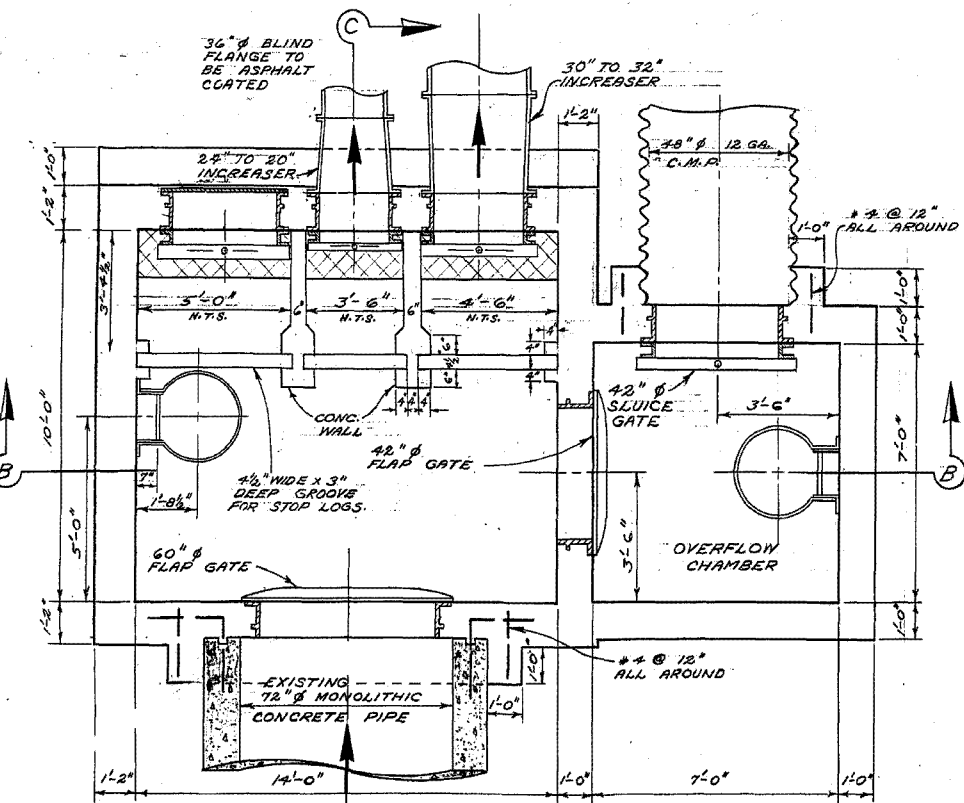
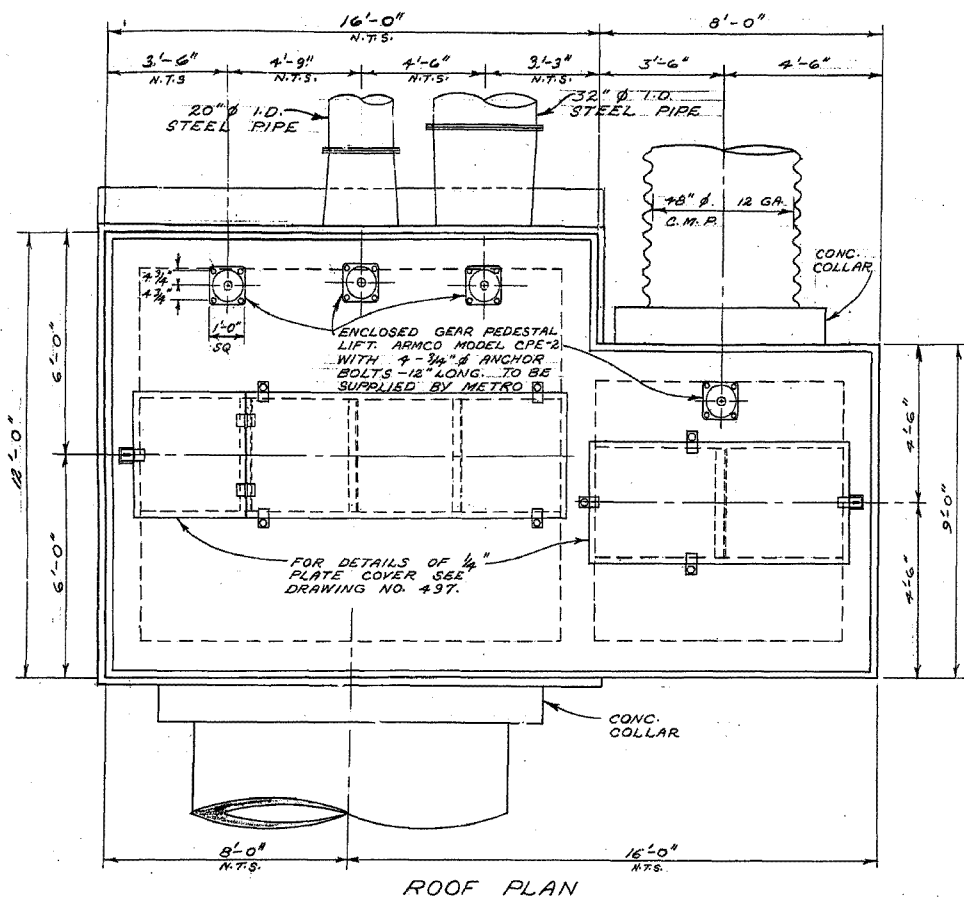


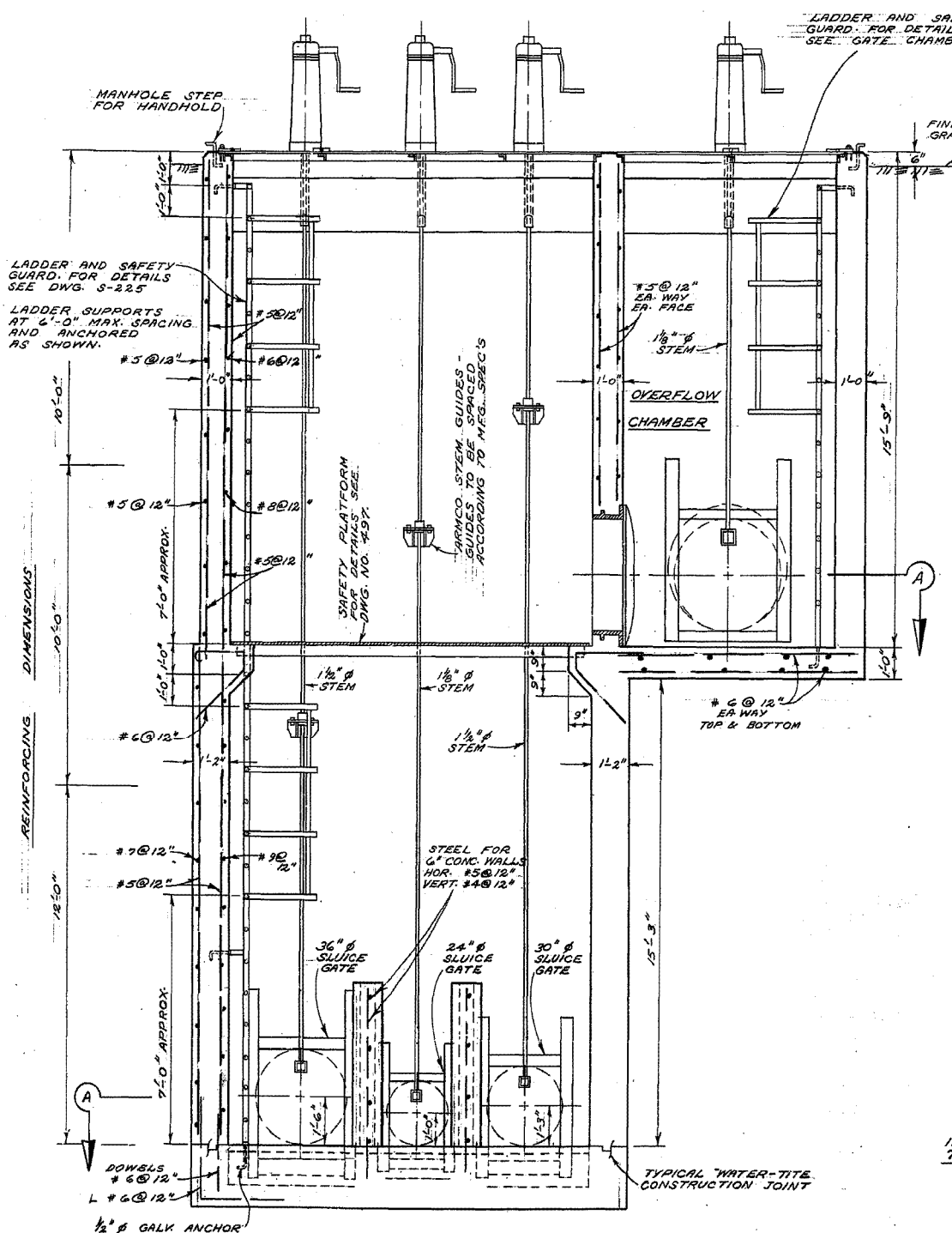
SITE PLAN
SCALE: 1"=2000'



THE METROPOLITAN CORPORATION WATERWORKS & WASTE DISPOSAL DIVISION		NORTH-EAST INTERCEPTOR RIVER CROSSING		494
---	--	---	--	-----



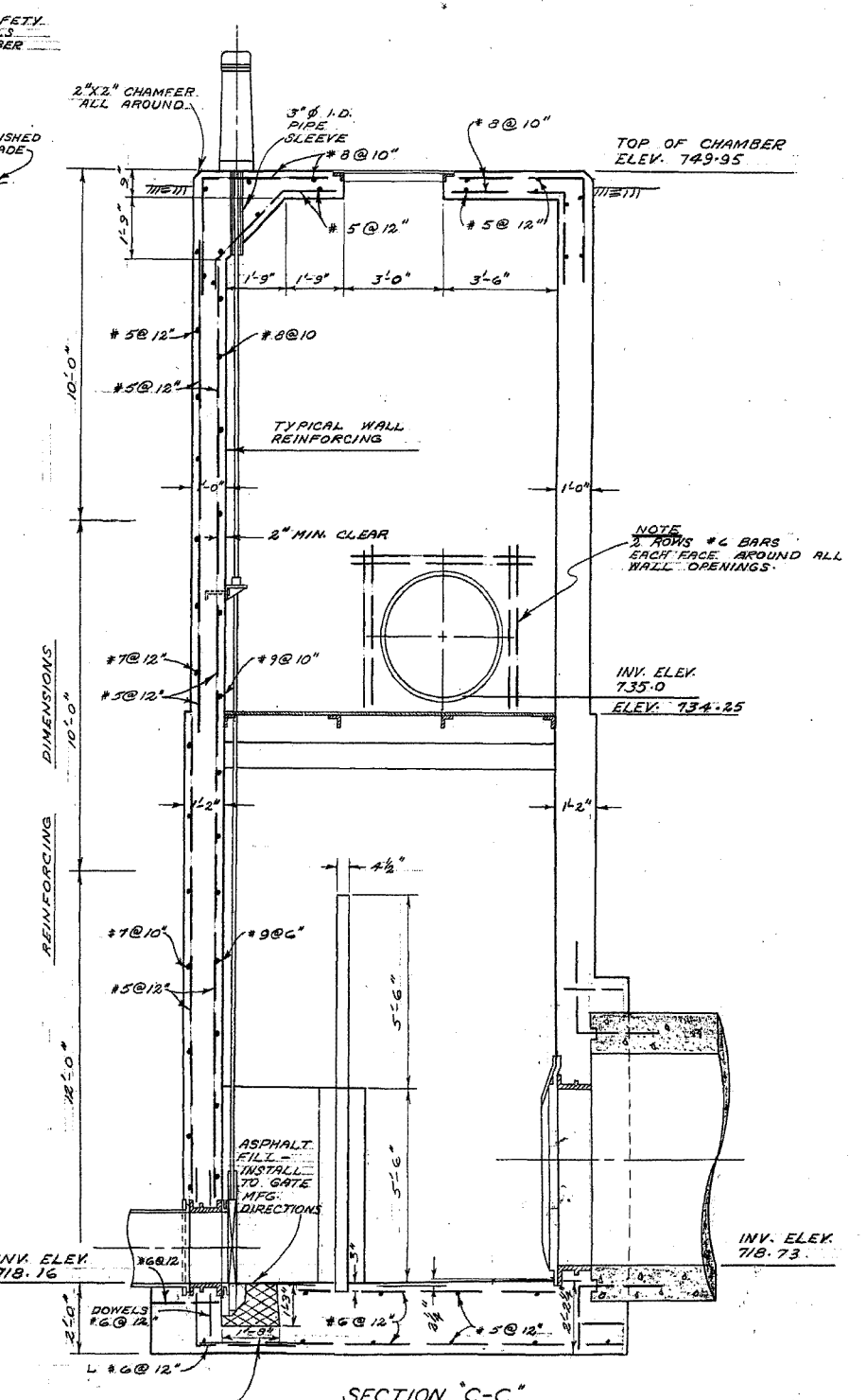
FLOOR PLAN
SECTION 'A-A'



SECTION 'B-B'

NOTES

1. 24", 30" & 36" SLUDGE GATES TO BE ARMCO MODEL 55-10 FLANGE BACK FLUSH BOTTOM HEAVY DUTY.
2. 42" SLUDGE GATE TO BE MODEL 55-10 FLANGE BACK STANDARD CLOSURE, MEDIUM DUTY.
3. 42" & 60" FLAP GATE TO BE ARMCO FLAT BACK HEAVY DUTY.
4. 24", 30" & 36" WALL THIMBLES TO BE SQUARE FLANGED ROUND OPENING ARMCO TYPE 'E'.
5. 42" & 60" WALL THIMBLE TO BE SQUARE FLANGED ROUND OPENING ARMCO TYPE 'F'.



SECTION 'C-C'

THESE DIMENSIONS ACCORDING TO GATE MANUFACTURERS SPECS.

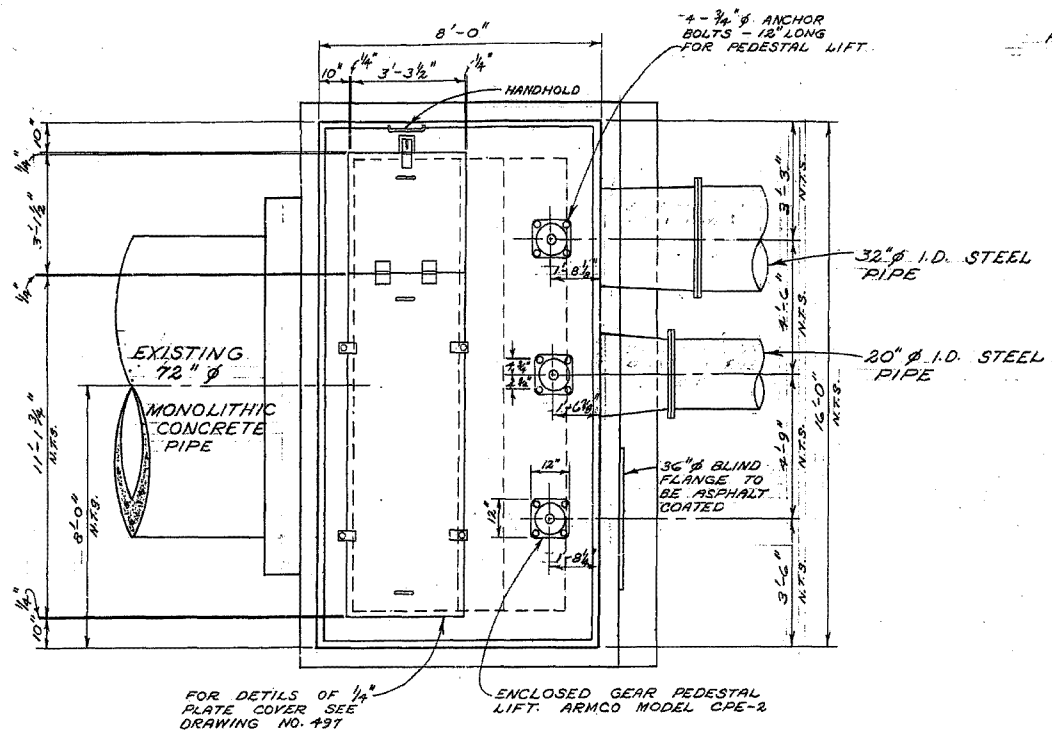
SURVEYED & PLAN CHECKED
BY
APPROVED AS BUILT
DATE MAR 1972

THE METROPOLITAN CORPORATION OF GREATER WINNIPEG
WATERWORKS & WASTE DISPOSAL DIVISION
A. PENMAN - DIRECTOR

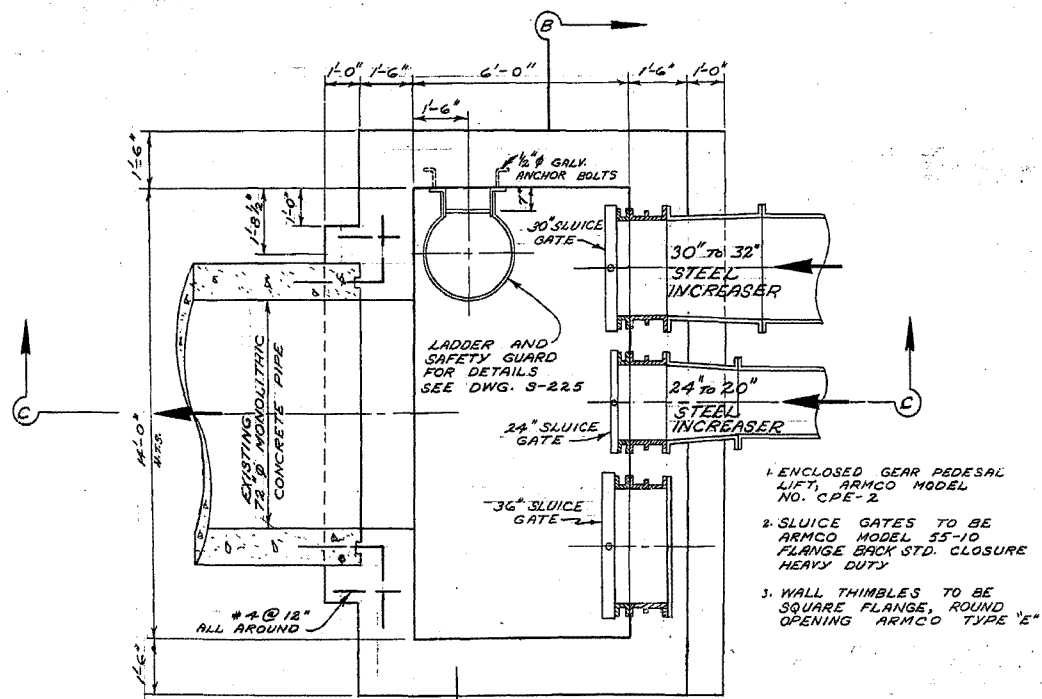
SEWAGE DISPOSAL DEPT.
NORTH-EAST INTERCEPTOR RIVER CROSSING
SIPHON INLET CHAMBER
DATE: MAR 31 1972



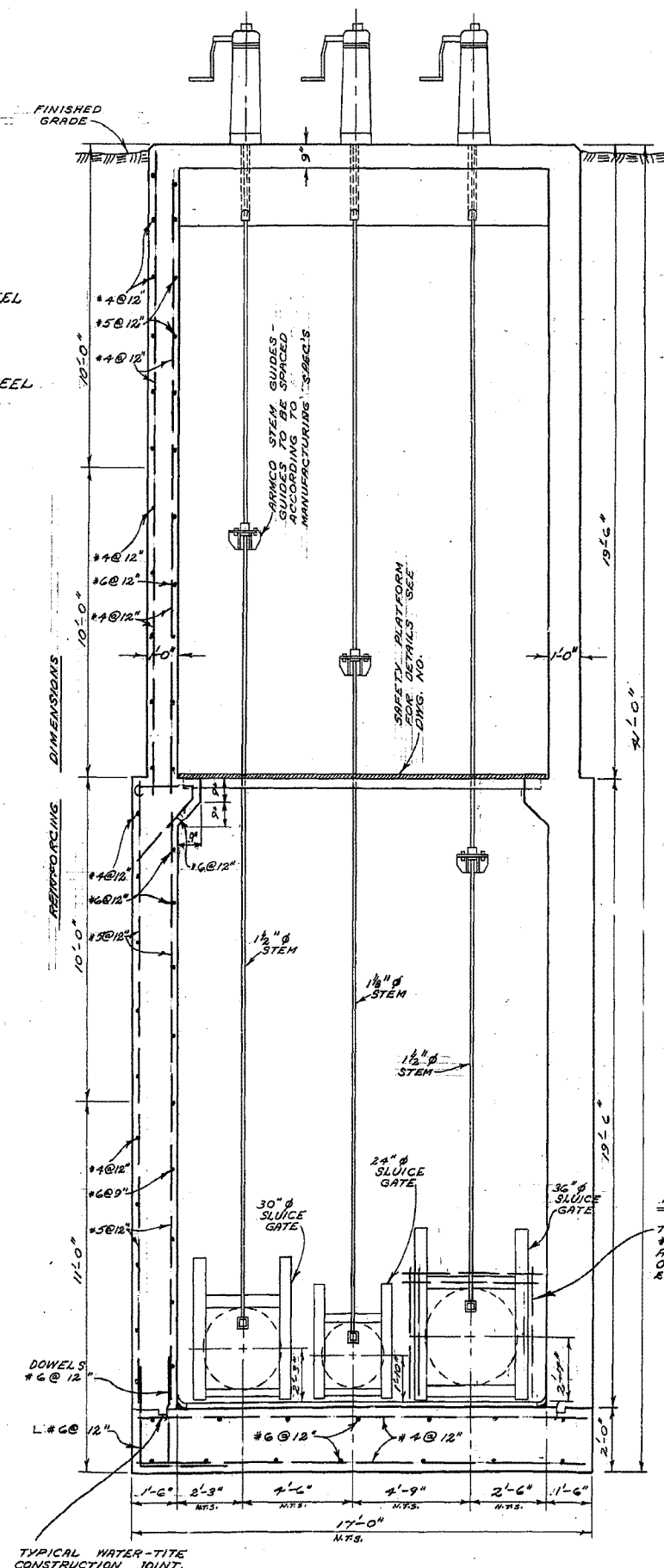
SCALE: 3/8" = 1'-0"
DRAWING NO. 495



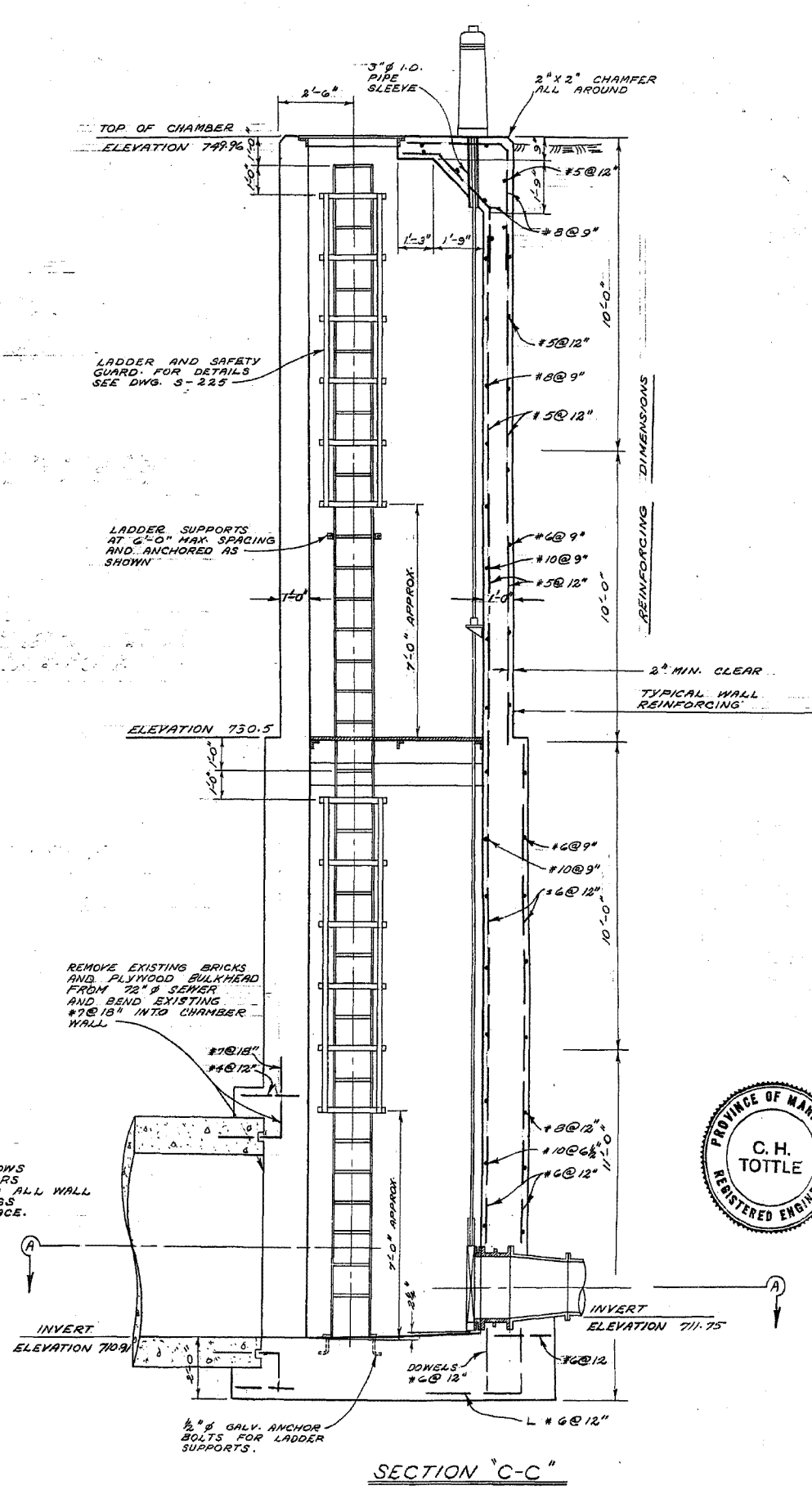
ROOF PLAN



SECTION A-A



SECTION B-B



SECTION C-C

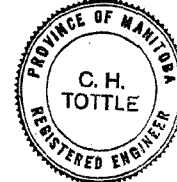
SURVEYED & PLAN CHECKED
 BY: [Signature]
 APPROVED AS BUILT
 BY: [Signature]
 MAR. 1972

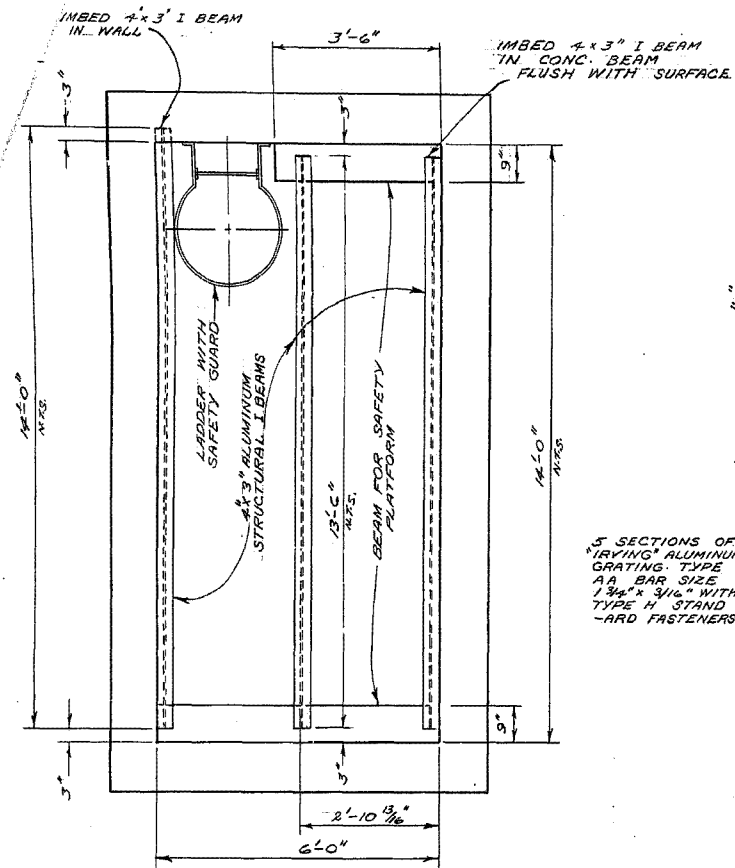
THE METROPOLITAN CORPORATION
 OF GREATER WINNIPEG
**WATERWORKS & WASTE
 DISPOSAL DIVISION**
 A. PENMAN - DIRECTOR

SEWER DISPOSAL DEPT.
 NORTH-EAST INTERCEPTOR
 RIVER CROSSING
 SIPHON OUTLET CHAMBER

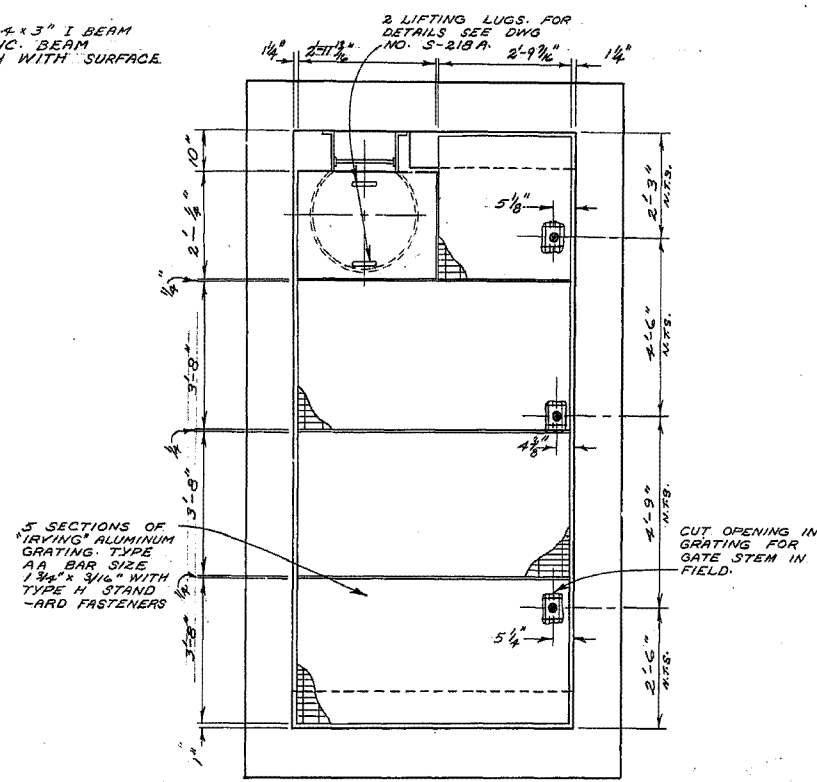
DES. [Signature] CH'KD. [Signature]
 DRN. V. GUMORE DATE JULY 1970
 ENG. DES. [Signature]
 ENG. [Signature]
 APPROVED [Signature]

SCALES
 3/8" = 1'-0"
 DRAWING NO.
496



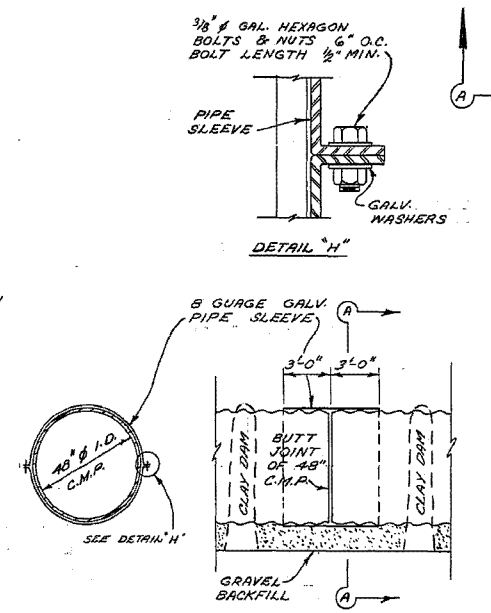


CONCRETE BEAMS AND ANGLE IRON DETAILS



GRATING DETAIL

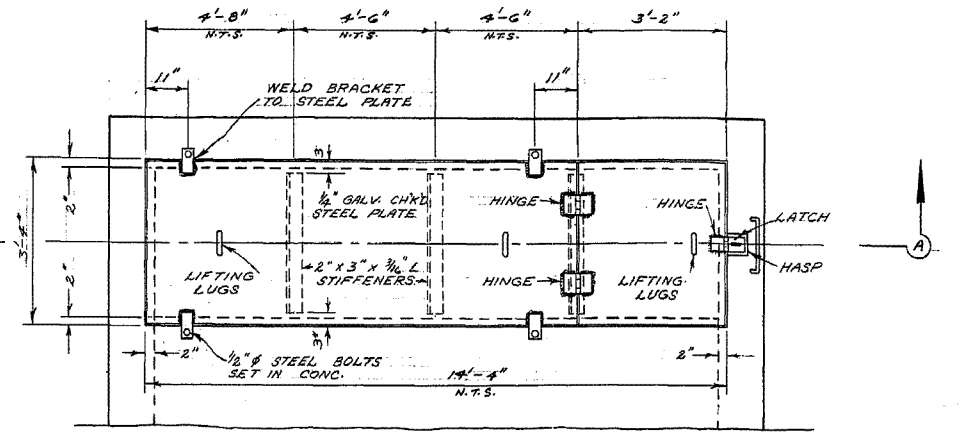
DETAIL OF SAFETY PLATFORM SIPHON OUTLET CHAMBER



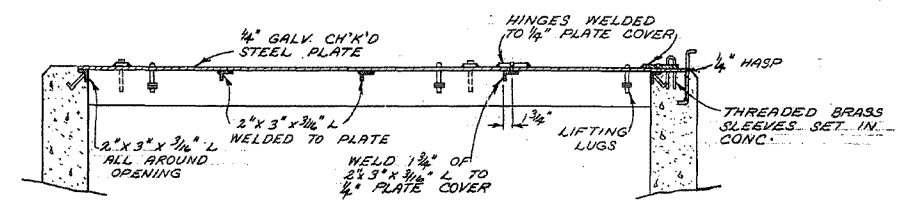
SECTION "A-A"

LONGITUDINAL SECTION

SLIP JOINT DETAIL

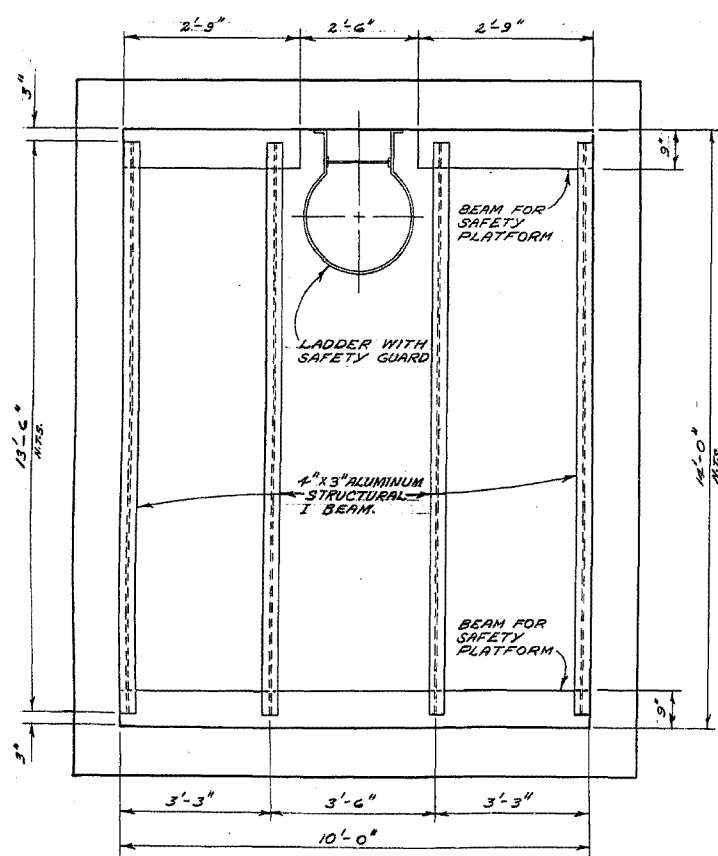


PLAN

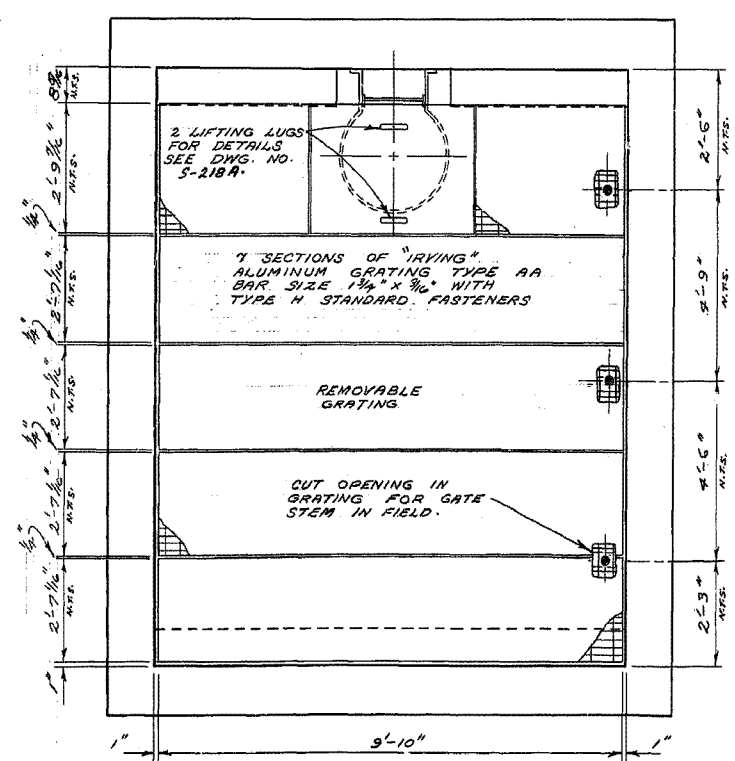


SECTION "A-A"

PLATE COVER FOR INLET AND OUTLET CHAMBERS

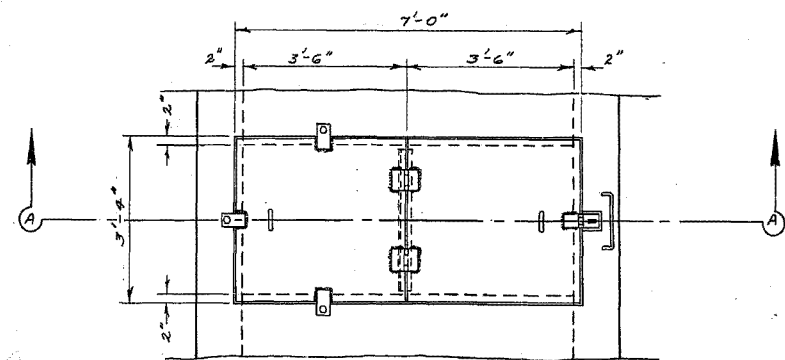


CONCRETE BEAM AND ANGLE IRON DETAIL

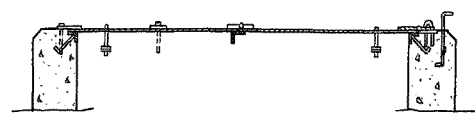


GRATING DETAIL

DETAIL OF SAFETY PLATFORM SIPHON INLET CHAMBER

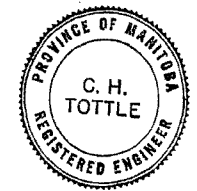


PLAN



SECTION "A-A"

PLATE COVER FOR OVERFLOW CHAMBER



SURVEYED & PLAN CHECKED BY APPROVED AS BUILT BY *AD D.S.* MAR. 1972

THE METROPOLITAN CORPORATION OF GREATER WINNIPEG WATERWORKS & WASTE DISPOSAL DIVISION PENMAN - DIRECTOR

SEWAGE DISPOSAL DEPT. NORTH-EAST INTERCEPTOR RIVER CROSSING MISC. DETAILS

DES. *att* CHK'D. *att* DRN. *YOUNG* DATE. SEPT. 3/70 ENG. DES. *att* ENG. *att* APPROVED *att*

SCALE 1/2" = 1'-0" DRAWING NO. 497