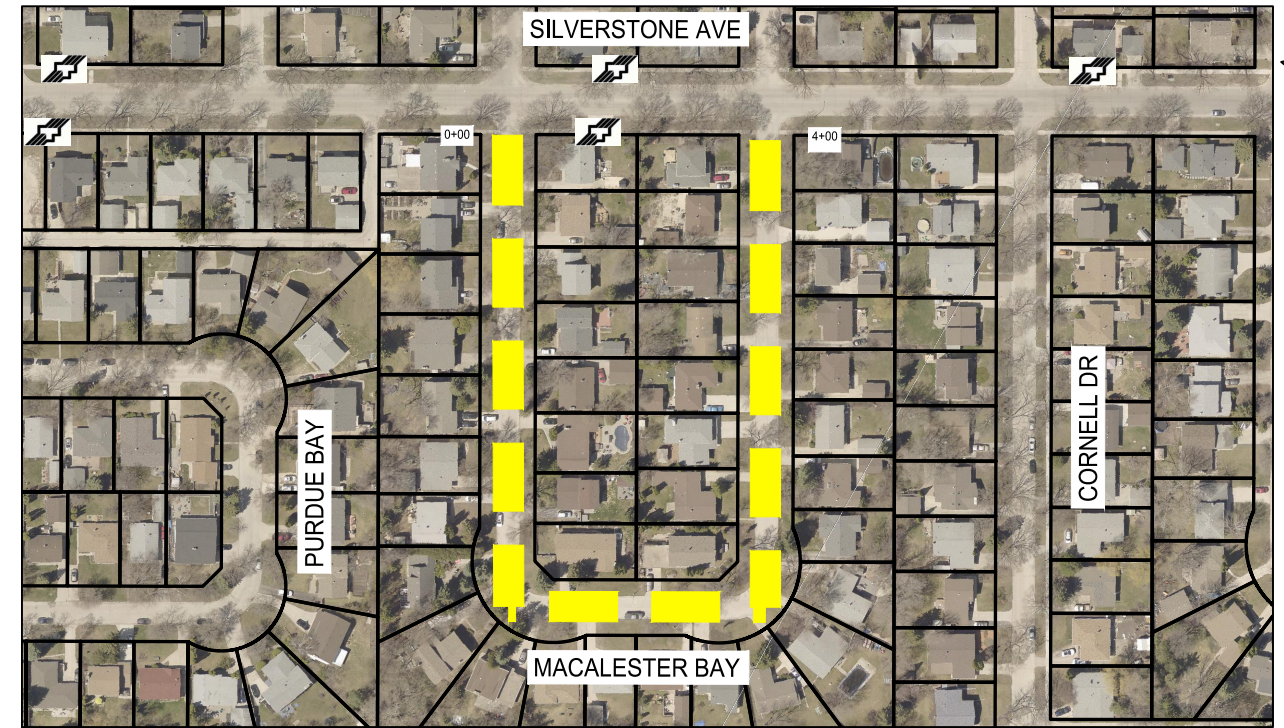


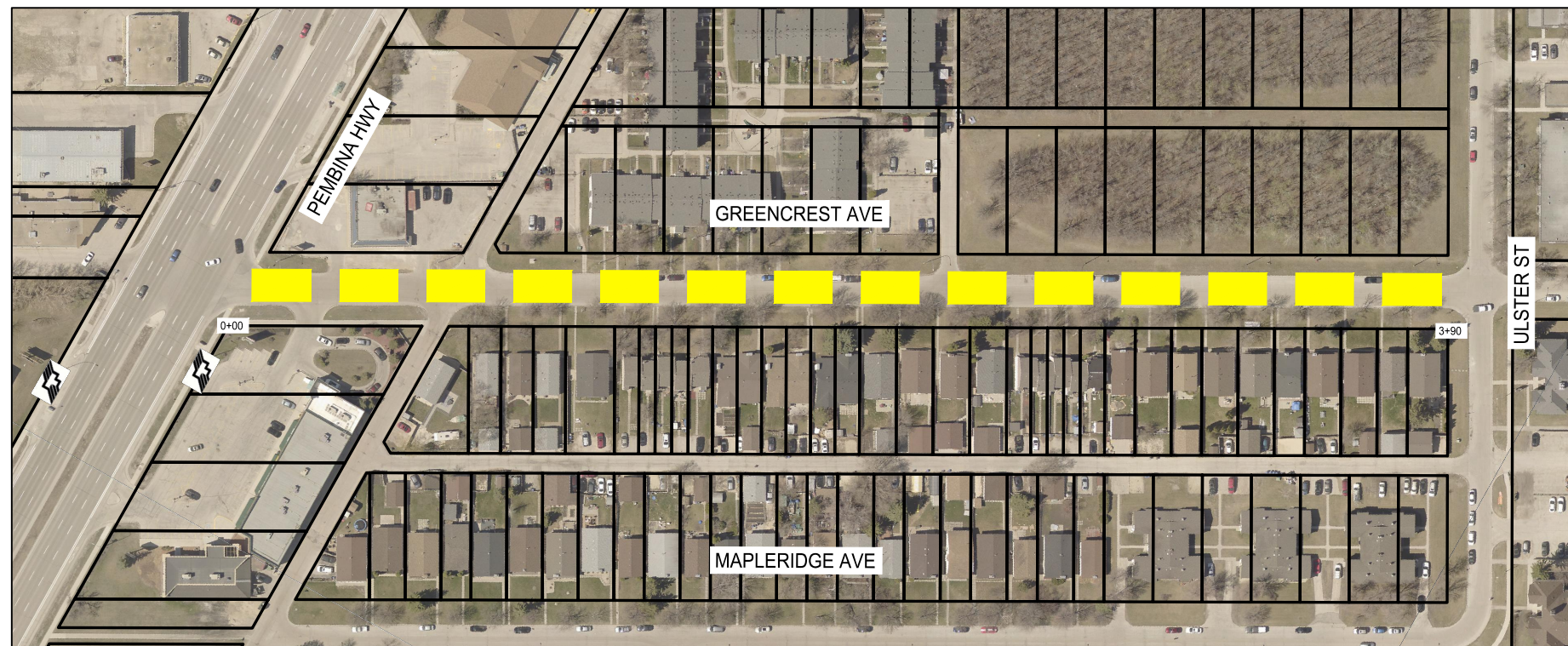
TULANE BAY - PASADENA AVE TO PASADENA AVE

1:2000



MACALESTER BAY - SILVERSTONE AVE TO SILVERSTONE AVE

1:2500



GREENCREST AVE - PEMBINA HWY TO ULSTER ST

1:2000

FOR TENDER

LEGEND



BUS ROUTE



SCHOOL LOCATION



LIMIT OF CONSTRUCTION

NOTE:
These design documents are prepared solely for the use by the party with whom the design professional has entered into a contract and there are no representations of any kind made by the design professional to any party with whom the design professional has not entered into a contract.

METRIC

WHOLE NUMBERS INDICATE MILLIMETRES
DECIMALIZED NUMBERS INDICATE METRES



LOCATIONS APPROVED UNDERGROUND STRUCTURES

SIGNED BY: _____ DATE _____
SUPV UG STRUCTURES _____ DATE _____

LOCATION OF UNDERGROUND STRUCTURES AS SHOWN ARE BASED ON THE BEST INFORMATION AVAILABLE BUT NO GUARANTEE IS GIVEN THAT ALL EXISTING UTILITIES ARE SHOWN OR THAT THE GIVEN LOCATIONS ARE EXACT CONFIRMATION OF EXISTENCE AND EXACT LOCATION OF ALL SERVICES MUST BE OBTAINED FROM THE INDIVIDUAL UTILITIES BEFORE PROCEEDING WITH CONSTRUCTION.

NO.	REVISIONS	DATE	BY
B	ISSUED FOR TENDER	21/07/22	AB
A	DETAILED DESIGN REVIEW	15/07/22	AB

wsp		1600 Buffalo Place Winnipeg, MB R3T 6B8 1.204.477.6650 1.204.474.2864 www.wsp.com	
DESIGNED BY	MS	CHECKED BY	VM
DRAWN BY	TW	APPROVED BY	VM
HOR. SCALE	VARIES	RELEASED FOR CONSTRUCTION	DATE
VERTICAL	-		
DATE	JULY-2022		

ENGINEER'S SEAL	CONSULTANT ACAD DWG. NO. 221-03150-00-12
-----------------	---

THE CITY OF WINNIPEG
PUBLIC WORKS DEPARTMENT
ENGINEERING SERVICES DIVISION

2022 THIN BITUMINOUS OVERLAY (TBO) PROGRAM

TULANE BAY, MACALESTER BAY, GREENCREST AVE,
ASPHALT OVERLAY

CITY DRAWING NUMBER
SHEET 12 OF 12

BID NO.
541-2022