



LEGEND	
(CB)	CATCH BASIN
(⊕)	HYDRO POLE
●☀	STREET LIGHT
⊙	PARKING LIGHT
(G)	GARBAGE

S1

CITY OF WINNIPEG  
TELEPHONE: 311  
UNAUTHORIZED  
PARKING  
PROHIBITED

S4

PROTECTING YOUR  
PARKED VEHICLE  
VALUABLES OUT OF SIGHT?  
ANTI-THEFT DEVICE ON?  
DOORS LOCKED?  
MPT

S45



S51



S648

MONITORED BY  
24 HOUR  
SURVEILLANCE

TOTAL SNOW CLEARING AREA = 13,020 FT<sup>2</sup>  
TOTAL SWEEP CLEARING AREA = 13,020 FT<sup>2</sup>

TOTAL STALLS	STAFF	VISITOR	ACCESSIBILITY
24	20	3	1

No:	REVISION/DESCRIPTION	BY	DATE

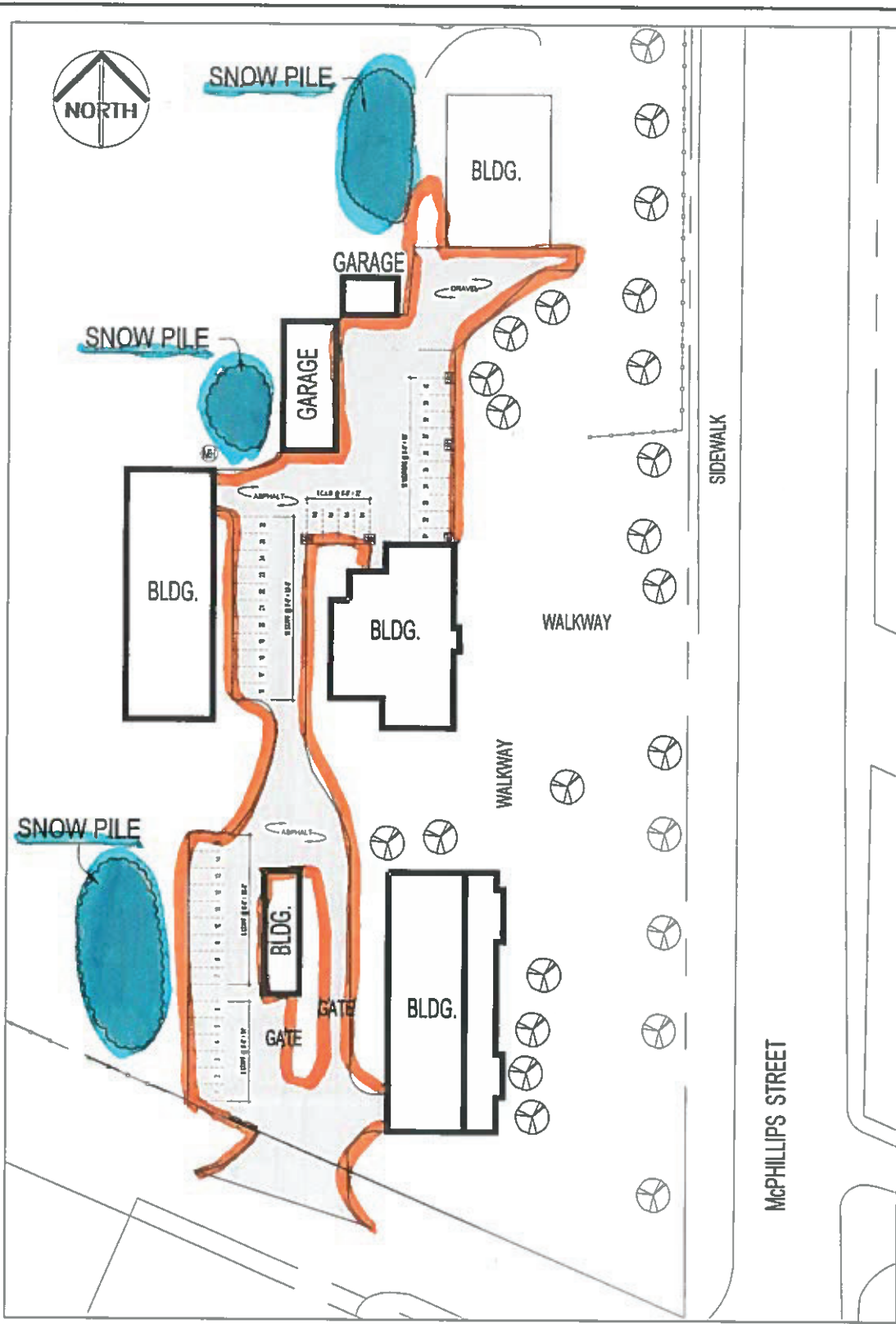
THE CITY OF WINNIPEG PLANNING, PROPERTY AND DEVELOPMENT DEPARTMENT MUNICIPAL ACCOMMODATIONS DIVISION 3-65 GARRY STREET				INNER CITY DOG POUND ENLARGED SITE PLAN WITH AREAS WPA LOT#45 1057 LOGAN AVENUE			
DRAWN: POT	APPROVED:	SCALE: N.T.S.	DATE: 2016.09.08	PROJECT: 2016-105	MAXIMO: CB-02, SP-047	DRAWING: C3	



SNOW PILE

SNOW PILE

SNOW PILE



LEGEND	
	WATER VALVE
	MANHOLE
	CATCH BASIN
	WATER METER W/VALVE
	FIRE HYDRANT
	GAS METER
	GAS VALVE W/ SHUT-OFF
	HYDRO POLE W/LIGHT
	STREET/PROPERTY LIGHT
	LIGHT
	DUPLEX RECEPTACLE
	HYDRO POLE
	ELECTRICITY METER
	ELECTRICITY PANEL
	PARKING FENCE
	DECIDUOUS TREE
	CONIFEROUS TREE
	GRASS

S802 VISITOR PARKING ONLY

S806 CITY OF WINNIPEG DEPARTMENT VEHICLES ONLY

SWEEP CLEARING AREA = 26,606 FT<sup>2</sup>  
 SNOW CLEARING AREA = 29,500 FT<sup>2</sup>

TOTAL STALLS	VISITOR	STAFF	WPA RSVD	CoW MARKED	CoW UNMARKED	ACCESSIBILITY
36	10	26	0	0	0	0

THE CITY OF WINNIPEG  
 PLANNING, PROPERTY AND DEVELOPMENT  
 DEPARTMENT MUNICIPAL ACCOMMODATIONS DIVISION  
 3-65 GARRY STREET

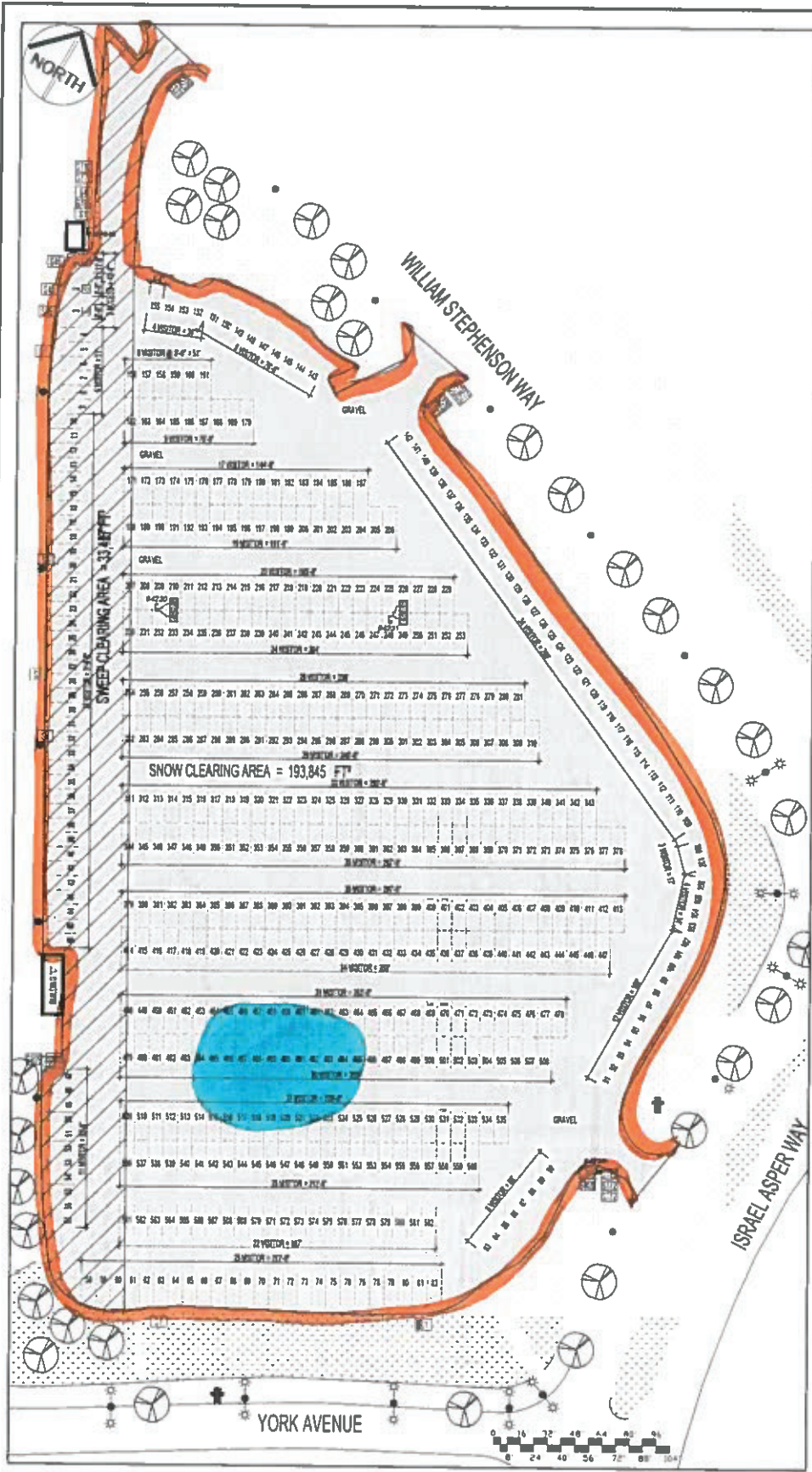
Winnipeg

DRAWN: JKR/DTA APPROVED: SCALE: DATE: NOV 14, 2018 PROJECT: 2016-105

WWD - McPHILLIPS PUMPING STATION  
 ENLARGED SITE PLAN  
 WPA LOT #135  
 360 McPHILLIPS STREET

MAXIMO: SB-28, SB-46 DRAWING: SNOW PILES

No.	REVISION/DESCRIPTION	BY	DATE



- S1 CITY OF WINNIPEG  
PHONE: 311  
UNAUTHORIZED  
PARKING  
PROHIBITED
- S4 PROTECTING YOUR  
PARKED VEHICLE  
VALUABLES OUT OF SIGHT?  
ANTI-THEFT DEVICE ON?  
DOORS LOCKED? W1
- S13 (P) (R)
- S45 (P) (R) (E)
- S131 (P) (R)
- S276 STOP
- S765 (P) Parking  
Purchases  
at this  
location  
are valid  
only at this  
location.
- S772 (P) (R) WPA  
LOT #117  
WATERFRONT  
PERMIT OR PAYMENT REQUIRED  
24 HOURS  
METER 8 AM - 6 PM  
\$2.00 PER 15 MIN  
DAILY 6 AM - 6 PM  
BI-DAILY MAX  
EVENING 6 PM - 6 AM  
\$2.00 PER 15 MIN \$8.00 MAX  
If business is daily your stall must  
be marked "DAILY".  
Please park your vehicle within  
the lines of your stall.
- S782 (P) The  
City of Winnipeg is  
not responsible for  
any loss,  
theft or  
damage to vehicle or  
contents.  
Park at your  
own risk.

LEGEND	
(W)	WATER VALVE
(M)	MANHOLE
(CB)	CATCH BASIN
(WV)	WATER METER W/VALVE
(FH)	FIRE HYDRANT
(GM)	GAS METER
(GVS)	GAS VALVE W/ SHUT-OFF
(HPL)	HYDRO POLE W/LIGHT
(SPL)	STREET PROPERTY LIGHT
(L)	LIGHT
(DR)	DUPLEX RECEPTACLE
(HP)	HYDRO POLE
(EM)	ELECTRICITY METER
(EP)	ELECTRICITY PANEL
(PF)	PARKING FENCE
(T)	TREE
(G)	GRASS

S808 (P) WPA  
LOT #117  
WATERFRONT  
PUBLIC PARKING 24 HOURS  
Please park your vehicle within the lines and double back up at your vehicle dash.

S809 AN IMMEDIATE  
\$300 FINE  
ALL IS ASSIGNED TO AVOID CLASHES  
ILLEGALLY DUMPING  
ZERO TOLERANCE POLICY IN EFFECT  
THIS SITE IS MONITORED

SWEEP CLEARING AREA = 33,437 FT<sup>2</sup>  
SNOW CLEARING AREA = 193,845 FT<sup>2</sup>

No:	REVISION/DESCRIPTION	BY	DATE
1	ADDED STALL NUMBERS, UPDATED SIGNS	P.D.	AUG 03, 2018

TOTAL STALLS	CoW	STAFF	WPA RSDV	VISITOR	ACCESSIBILITY
582	0	0	0	579	3

THE CITY OF WINNIPEG  
PLANNING, PROPERTY AND DEVELOPMENT  
DEPARTMENT MUNICIPAL ACCOMMODATIONS DIVISION  
3-65 GARRY STREET

DRAWN: DTA APPROVED: SCALE: N.T.S. DATE: 2017.02.02 PROJECT: 2016-105

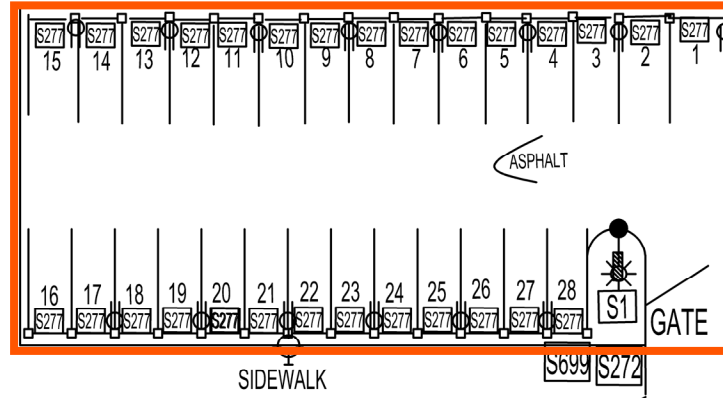
SURFACE PARKING LOT  
SITE PLAN (CLEARING AREAS)  
WPA LOT #117  
106 ISRAEL ASPER WAY

MAXIMO: DRAWING: C2



TACHE STREET

SIDEWALK



**SNOW TO BE HAULED  
SAME NIGHT WHEN  
CLEARED**

DOLLARD BOULEVARD

LEGEND	
	PARKING LIGHT
	CATCH BASIN
	STREET LIGHT

S1

CITY OF WINNIPEG  
TELEPHONE: 311  
UNAUTHORIZED  
PARKING  
PROHIBITED

S277

**P** Winnipeg Parking Authority  
This stall absolutely  
**RESERVED**  
6 AM - 6 PM Weekdays only  
Visitors welcome at all other times.

Unauthorized or improperly parked vehicles may be ticketed and towed at owner's expense and liability.

S272

**P** Winnipeg Parking Authority  
LOT #188  
115 DOLLARD  
BLVD.  
PUBLIC PARKING AFTER 6:00  
PM WEEKDAYS, ALL DAY  
SATURDAY & SUNDAY  
Please purchase Hourly Permit from PayByPhone.  
LOCATION # 204466

Unauthorized or improperly parked vehicles may be ticketed or towed at owner's expense and liability.

S699

**pay by phone**  
download mobile app  
paybyphone.com  
or call 204-957-7275  
Location 204466  
Payment

TOTAL CLEARING AREA = 10,022 FT<sup>2</sup>  
SERVICE PROVIDER = 10,022 FT<sup>2</sup>

TOTAL STALLS	STAFF MARKED
28	0

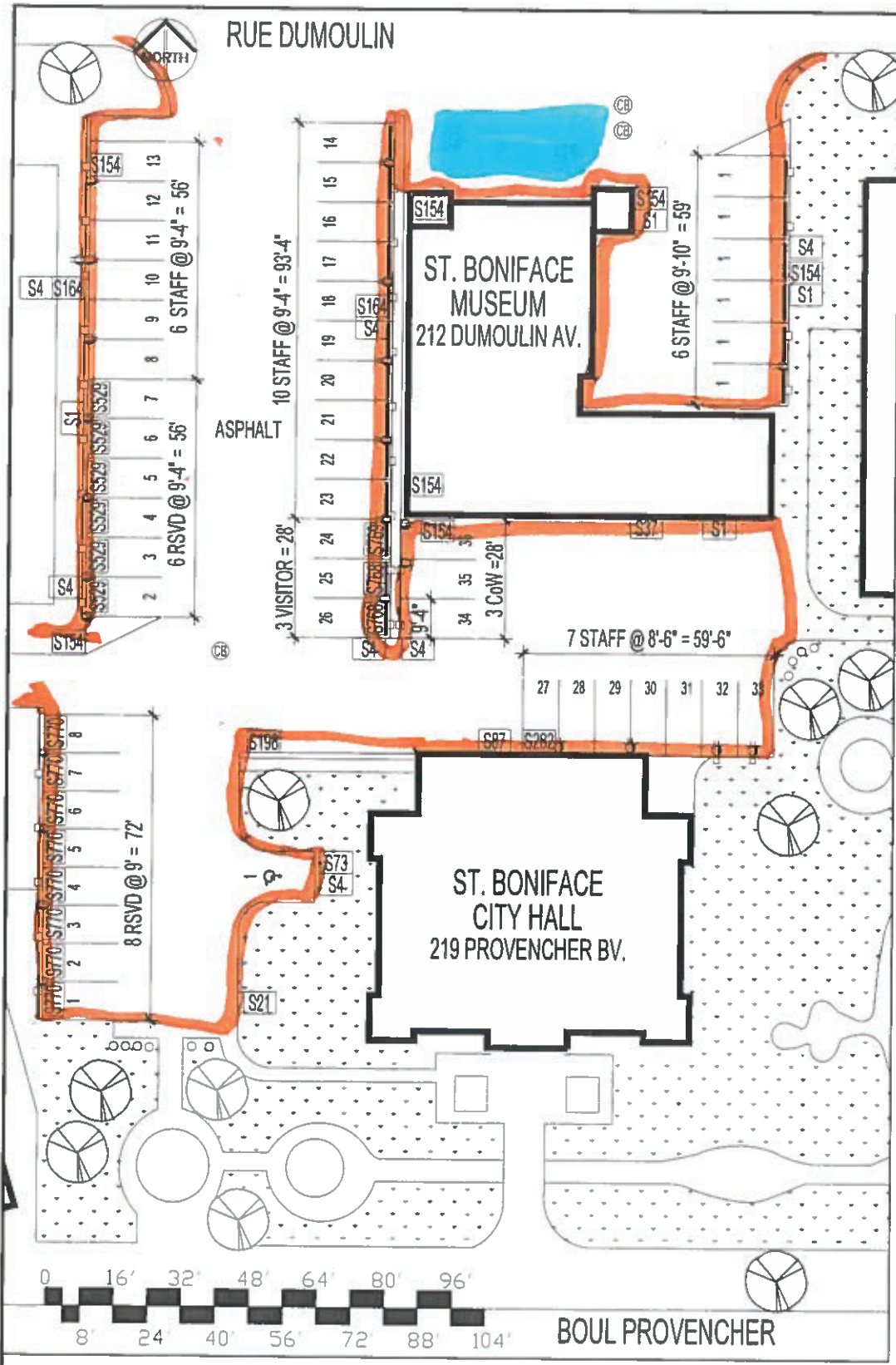
No:	REVISION/DESCRIPTION	BY	DATE
1			

THE CITY OF WINNIPEG  
PLANNING, PROPERTY AND DEVELOPMENT  
DEPARTMENT MUNICIPAL ACCOMMODATIONS DIVISION  
3-65 GARRY STREET

**Winnipeg**

PAVEMENT MARKING FACILITY  
ENLARGED SITE PLAN WITH AREAS  
PARKING LOT #188  
115 DOLLARD BLVD

DRAWN: PDT APPROVED: SCALE: N.T.S DATE: AUG 16, 2022 PROJECT: 2016-105 MAXIMO: PW-18, PW-20, SP-69 DRAWING: SLA



LEGEND	
	WATER VALVE
	MANHOLE
	CATCH BASIN
	WATER METER W/VALVE
	FIRE HYDRANT
	GAS METER
	GAS VALVE W/ SHUT-OFF
	HYDRO POLE W/LIGHT
	STREET/PROPERTY LIGHT
	LIGHT
	DUPLEX RECEPTACLE
	HYDRO POLE
	ELECTRICITY METER
	ELECTRICITY PANEL
	PARKING FENCE
	DECIDUOUS TREE
	CONIFEROUS TREE
	GRASS

- S1** CITY OF WINNIPEG  
PHONE 311  
**UNAUTHORIZED  
PARKING  
PROHIBITED**
- S4** PROTECTING YOUR  
PARKEE VEHICLE  
VALUABLES OUT OF SIGHT?  
ANTI-THEFT DEVICE ON?  
DOORS LOCKED?  
MP
- S21**
- S37** CITY OF WINNIPEG  
**NO  
PARKING**
- S87** **S73**
- S154** VILLE DE WINNIPEG  
311  
PROPRIETE PRIVEE  
STATIONNEMENT INTERDIT  
SANS AUTORISATION
- S164** ARRÊTEZ  
LE MOTEUR  
  
LES COLLECTIBLES  
NE MARCHENT PAS  
AU MARCHÉ
- S198** CITY OF WINNIPEG  
PHONE 311  
**NO  
PARKING**
- S282** **S529** **MSBA**  
24 Hour Reserved
- S770** Tremont Centre Touristique  
Marché des artistes  
Visiteur - Visiteur  
**RESERVED - 24 HOURS**

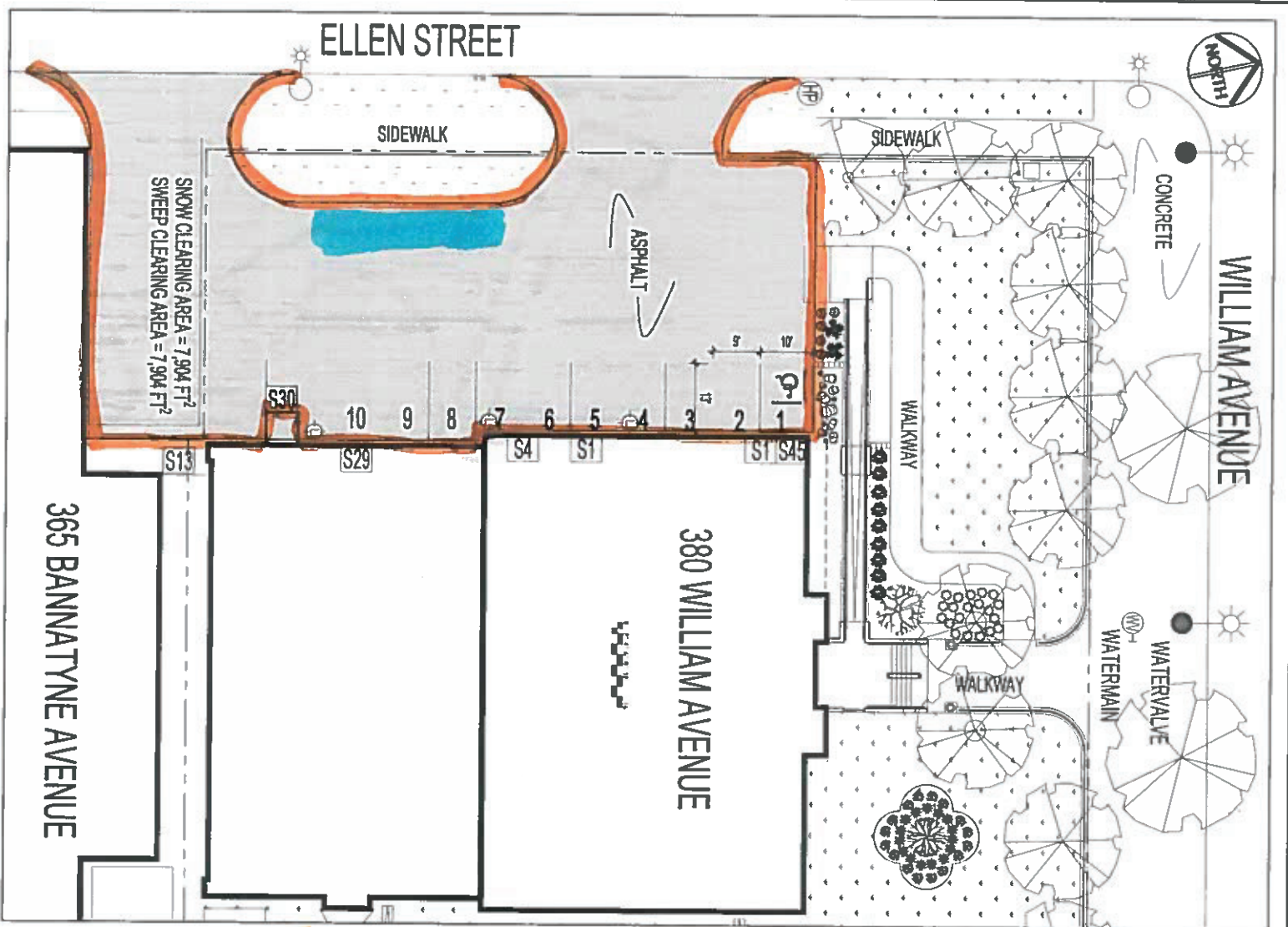
TOTAL STALLS #83	VISITOR	STAFF	WPA RSVD	CoW MARKED	CoW UNMARKED	ACCESSIBILITY
44	3	23	14	0	3	1
TOTAL STALLS #84	VISITOR	STAFF	WPA RSVD	CoW MARKED	CoW UNMARKED	ACCESSIBILITY
8	0	6	0	0	0	0

No.	REVISION/DESCRIPTION	BY	DATE
1	UPDATED SIGNS	P.D	AUG 07, 2018

THE CITY OF WINNIPEG  
 PLANNING, PROPERTY AND DEVELOPMENT  
 DEPARTMENT MUNICIPAL ACCOMMODATIONS DIVISION  
 3-65 GARRY STREET

**ST. BONIFACE COMMUNITY OFFICE & MUSEUM  
 SITE PLAN  
 WPA LOT #83, #84  
 219 PROVENCHER BV. & 212 DUMOULIN AV.**

DRAWN: DTA    APPROVED:    SCALE: N.T.S.    DATE: 2017.01.27    PROJECT: 2016-107    MAXIMO: CB-39, SP-49, LO-01, SP-26    DRAWING: C1



LEGEND	
○*	HYDRO POLE W/LIGHT
⊕	HYDRO POLE
☀	STREET/PROPERTY LIGHT
⊕	PARKING LIGHT

**S1**  
 CITY OF WINNIPEG  
 PHONE: 311  
 UNAUTHORIZED  
 PARKING  
 PROHIBITED

**S4**  
 PROTECTING YOUR  
 PARKED VEHICLE  
 VALUABLES OUT OF SIGHT?  
 ANTI-THEFT DEVICE ON?  
 DOORS LOCKED?

**S13**

**S29**

**S30**  
  
 CITY OF WINNIPEG  
 ARCHIVES & RECORDS  
 SERVICES CONTROL CENTER  
 SHIPPING AND RECEIVING ONLY /  
 ALL VISITORS  
 MUST REPORT TO THE  
 FRONT ENTRANCE FACING BANNATYNE

**S30**

SNOW CLEARING AREA = 7,904 FT<sup>2</sup>  
 SWEEP CLEARING AREA = 7,904 FT<sup>2</sup>

365 BANNATYNE AVENUE

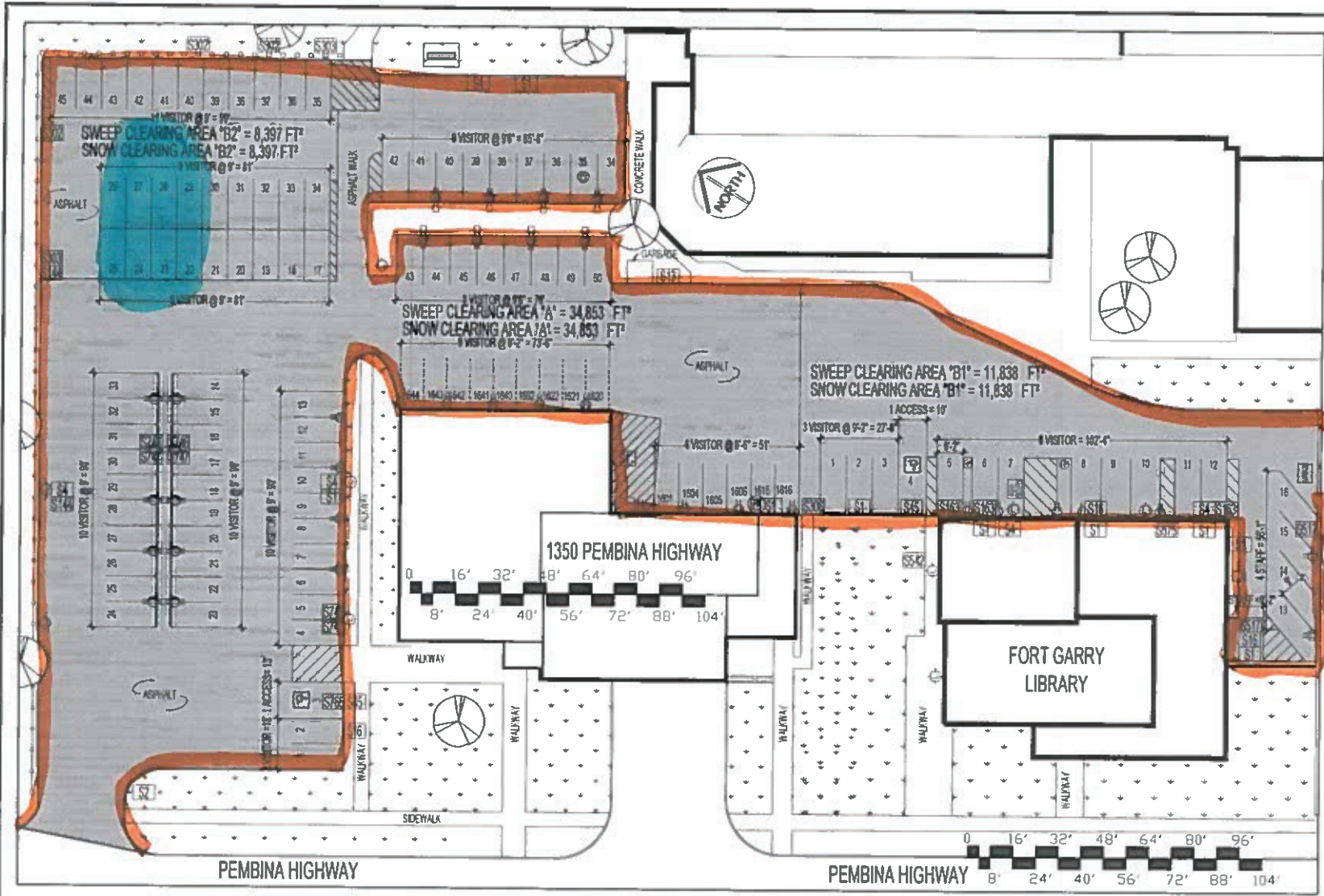
380 WILLIAM AVENUE

No.	REVISION/DESCRIPTION	BY	DATE

TOTAL STALLS	STAFF MARKED	ACCESSIBILITY
10	9	1

 PLANNING, PROPERTY AND DEVELOPMENT DEPARTMENT MUNICIPAL ACCOMMODATIONS DIVISION 365 GARRY STREET	THE CITY OF WINNIPEG
	ARCHIVES ENLARGED SITE PLAN WITH AREAS WPA LOT #108 380 WILLIAM AVENUE
DRAWN: P01 APPROVED: [Signature] SCALE: N.T.S. DATE: 2016.07.11 PROJECT: 2016-105	MAXIMO: HB-19, SP-118 DRAWING: C3



LEGEND	
	WATER VALVE
	MANHOLE
	CATCH BASIN
	WATER METER W/VALVE
	FIRE HYDRANT
	GAS METER
	GAS VALVE W/ SHUT-OFF
	HYDRO POLE W/ LIGHT
	LIGHT
	DUPLEX RECEPTACLE
	HYDRO POLE
	ELECTRICITY METER
	ELECTRICITY PANEL
	PARKING FENCE
	TREE
	GRASS

**S765** **P** Parking Purchasers at this location - see valid only at this location.

**S747** **pay by phone**  
 download mobile app  
 paybyphone.com  
 call 204-981-2775  
 Location: 5475

**S746** **P** **LOT #71**  
 1350 PEMBINA HWY  
 Public Property - see map

**S575** **FIRE EXIT**

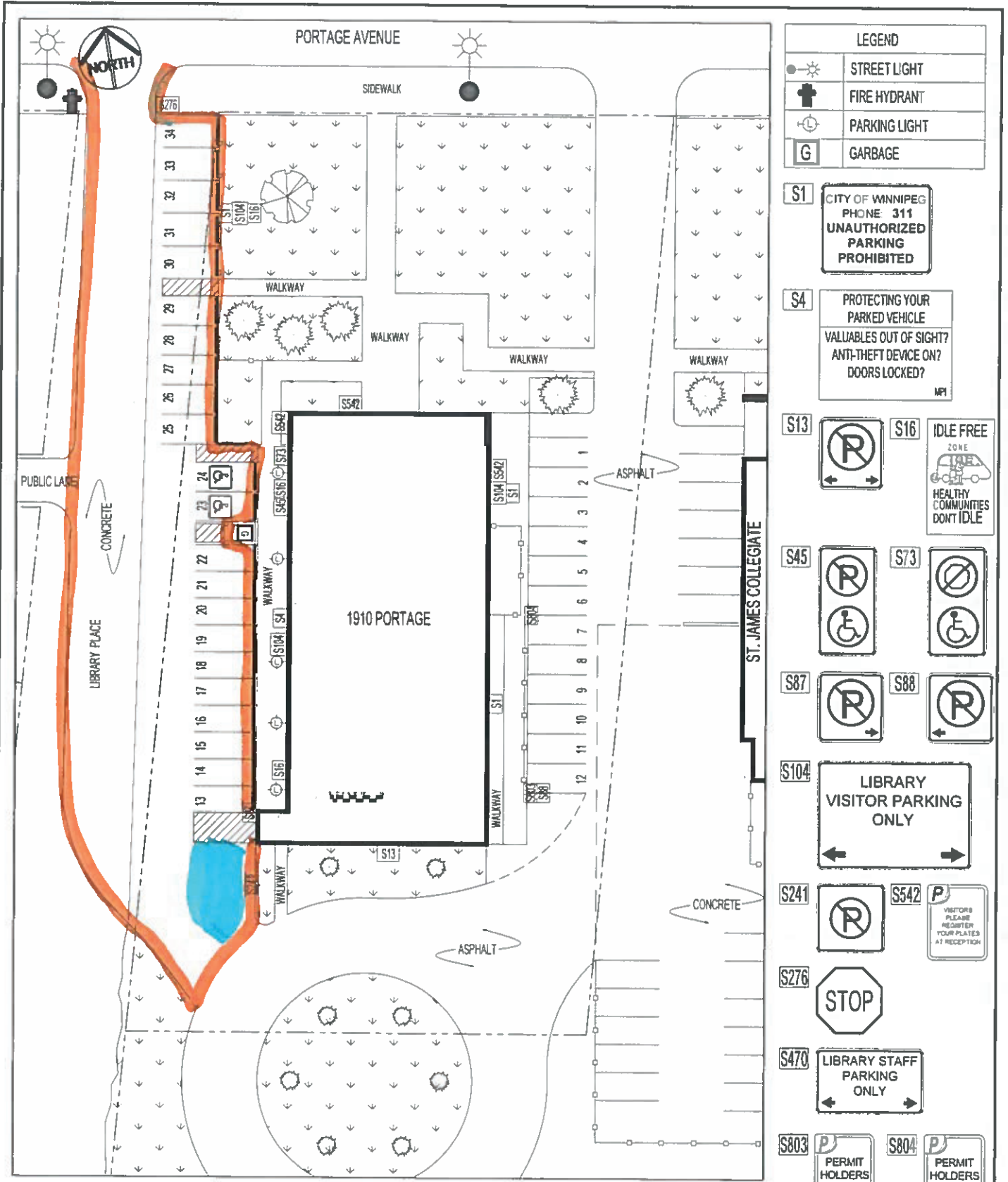
- S1** CITY OF WINNIPEG PHONE: 311 UNAUTHORIZED PARKING PROHIBITED
- S2** THIS PROPERTY ADMINISTERED BY THE WINNIPEG PARKING AUTHORITY 311
- S4** PROTECTING YOUR PARKED VEHICLE VALUABLES OUT OF SIGHT? ANTI-THEFT DEVICE ON? DOORS LOCKED?
- S13**
- S16** **IDLE FREE ZONE** HEALTHY COMMUNITIES DON'T IDLE
- S144** CITY OF WINNIPEG **NO PARKING**
- S163** **LIBRARY VISITOR PARKING**
- S303** **LIBRARY OVERFLOW PARKING** ALL VEHICLES MUST REGISTER
- S306** **LIBRARY PATRON PARKING ONLY**
- S517** **STAFF ONLY**
- S542** **VISITORS PLEASE REGISTER YOUR PLATES AT RECEPTION**

TOTAL STALLS	VISITOR	STAFF	WPA RSV'D	CoW MARKED	CoW UNMARKED	ACCESSIBILITY
85	64	0	0	0	0	1
TOTAL STALLS LOT #72 (P)	VISITOR	STAFF	WPA RSV'D	CoW MARKED	CoW UNMARKED	ACCESSIBILITY
48	40	5	0	0	0	1

**S45** **S302** **THIS AREA RESERVED** CITY OF WINNIPEG COMMUNITY SERVICES **LIBRARY VISITORS** PLEASE REGISTER YOUR LICENSE PLATE AT THE LIBRARY AND POOL FRONT COUNTER ALL OF OUR HALLS ARE HEATED AND FINISHED \*INDOOR AIRSPACE ONLY\*

SWEEP CLEARING AREA 'A' = 34,853 FT²  
 SNOW CLEARING AREA 'A' = 34,853 FT²  
 SWEEP CLEARING AREA 'B' = 20,235 FT² = 8,397 + 11,838 FT²  
 SNOW CLEARING AREA 'B' = 20,235 FT² = 8,397 + 11,838 FT²

THE CITY OF WINNIPEG  
 PLANNING, PROPERTY AND DEVELOPMENT  
 DEPARTMENT MUNICIPAL ACCOMMODATIONS DIVISION  
 3-65 GARRY STREET  
 FORT GARRY POLICE (SURPLUS) & FORT GARRY LIBRARY  
 SITE PLAN (CLEARING AREAS)  
 WPA LOT #71 & 72  
 1350 & 1360 PEMBINA HIGHWAY  
 DRAWN: DTA APPROVED: N.T.S. SCALE: DATE: 2017.01.23 PROJECT: 2016-106 MAXIMO: PS-14, SP-76, LB-20, SP-77 DRAWING: C2



LEGEND	
	STREET LIGHT
	FIRE HYDRANT
	PARKING LIGHT
	GARBAGE

**S1** CITY OF WINNIPEG  
PHONE 311  
**UNAUTHORIZED  
PARKING  
PROHIBITED**

**S4** PROTECTING YOUR  
PARKED VEHICLE  
VALUABLES OUT OF SIGHT?  
ANTI-THEFT DEVICE ON?  
DOORS LOCKED?  
MP1

**S13**

**S16** IDLE FREE  
ZONE  
  
HEALTHY  
COMMUNITIES  
DON'T IDLE

**S45**

**S73**

**S87**

**S88**

**S104** LIBRARY  
VISITOR PARKING  
ONLY

**S241**

**S542**

**S276** STOP

**S470** LIBRARY STAFF  
PARKING  
ONLY

**S803**

**S804**

No.	REVISION/DESCRIPTION	BY	DATE
1	UPDATED ENTIRE LOT TO INCLUDE THE NEW BUS LOOP ADDED THE NEW STALLS AND SIGNS	P.D	SEP 25, 2015
TOTAL STALLS	STAFF	VISITOR	ACCESS.
34	6	26	2

THE CITY OF WINNIPEG  
PLANNING, PROPERTY AND DEVELOPMENT  
DEPARTMENT MUNICIPAL ACCOMMODATIONS DIVISION  
3-65 GARRY STREET

ST. JAMES LIBRARY  
ENLARGE SITE PLAN  
WPA LOT #76  
1910 PORTAGE AVENUE

DRAWN: P.D	APPROVED:	SCALE: N.T.S	DATE: SEP 25, 2018	PROJECT: 2016-105	MAXIMO: LB-08, SP-82	DRAWING: C1
------------	-----------	--------------	--------------------	-------------------	----------------------	-------------





SNOW CLEARING AREA = 8,435 FT<sup>2</sup>  
 SWEEP CLEARING AREA = 8,435 FT<sup>2</sup>

SNOW CLEARING AREA = 8,435 FT<sup>2</sup>  
 SWEEP CLEARING AREA = 8,435 FT<sup>2</sup>

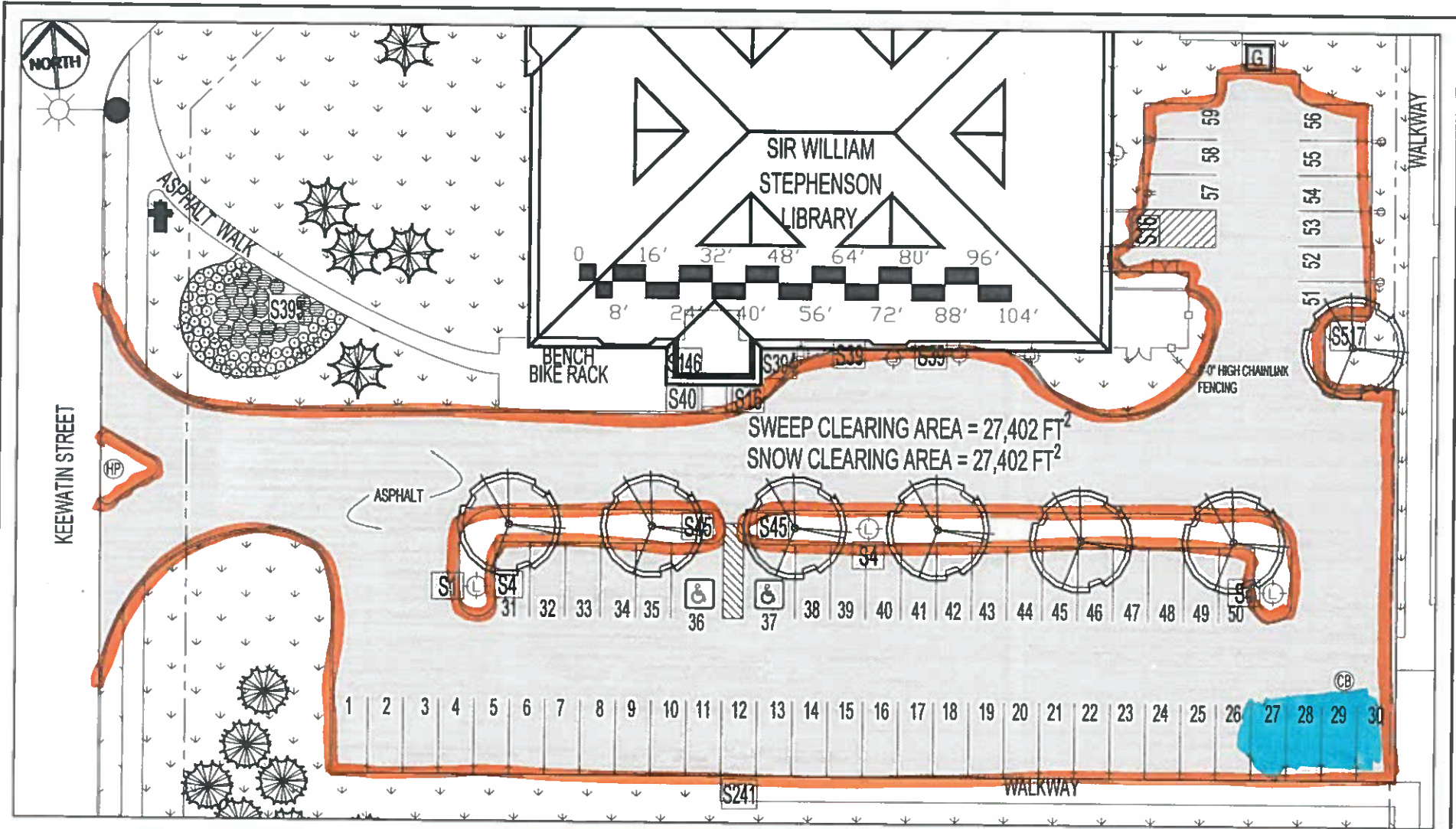
LEGEND	
	MANHOLE
	CATCH BASIN
	HYDRO POLE W/LIGHT
	HYDRO POLE
	ELECTRICITY METER
	GARBAGE

<b>S1</b> CITY OF WINNIPEG TELEPHONE: 311 UNAUTHORIZED PARKING PROHIBITED	<b>S2</b> THIS PROPERTY ADMINISTERED BY THE WINNIPEG PARKING AUTHORITY 311	<b>S4</b> PROTECTING YOUR PARKED VEHICLE VALUABLES OUT OF SIGHT? ANTI-THEFT DEVICE ON? DOORS LOCKED? <small>UP</small>	<b>S15</b> WEST KILDONAN LIBRARY VISITOR PARKING ← STALLS 8-14 →	<b>S16</b> IDLE FREE ZONE  HEALTHY COMMUNITIES DON'T IDLE	<b>S23</b>	<b>S24</b> STAFF PARKING ONLY
<b>S196</b> CITY OF WINNIPEG TELEPHONE: 311 NO PARKING ←	<b>S354</b> CITY OF WINNIPEG TELEPHONE: 311 NO PARKING →	<b>S25</b> LIBRARY STAFF PARKING ONLY	<b>S26</b> ONE VEHICLE ONLY			

TOTAL STALLS	STAFF	VISITOR	ACCESSIBILITY
17	7	9	1

No.	REVISION/DESCRIPTION	BY	DATE

THE CITY OF WINNIPEG PLANNING, PROPERTY AND DEVELOPMENT DEPARTMENT MUNICIPAL ACCOMMODATIONS DIVISION 3-65 GARRY STREET				WEST KILDONAN LIBRARY ENLARGED SITE PLAN WITH AREAS WPA LOT#41 365 JEFFERSON AVENUE	
DRAWN: PDT	APPROVED:	SCALE: N.T.S.	DATE: 2016.08.30	PROJECT: 2016-105	MAXIMO: LB-11, SP-043
					DRAWING: C3



LEGEND	
	FIRE HYDRANT
	CATCH BASIN
	STREET LIGHT
	HYDRO POLE
	GARBAGE

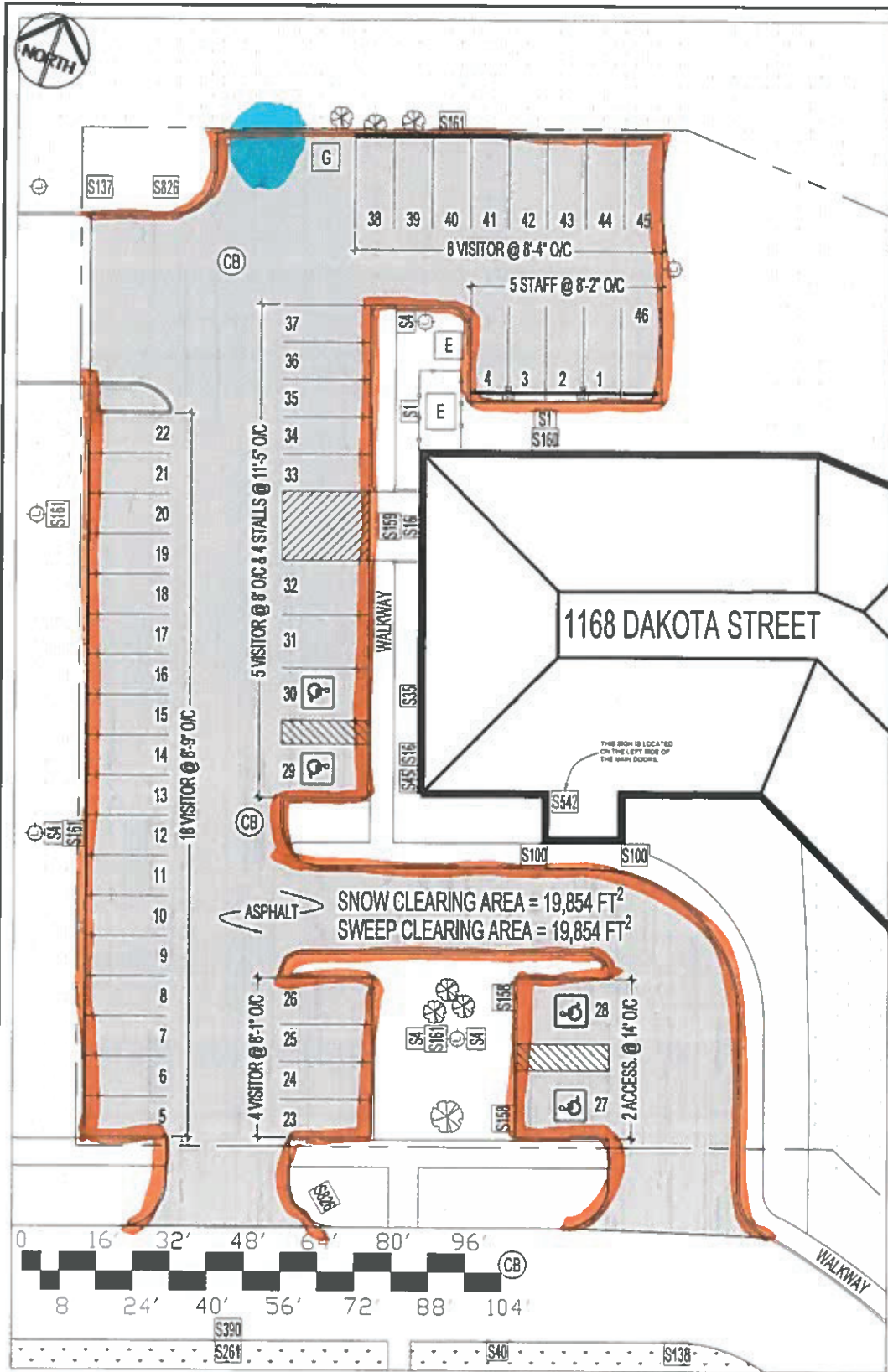
CITY OF WINNIPEG TELEPHONE: 311 UNAUTHORIZED PARKING PROHIBITED	PROTECTING YOUR PARKED VEHICLE VALUABLES OUT OF SIGHT? ANTI-THEFT DEVICE ON? DOORS LOCKED? <small>WPA</small>	IDLE FREE ZONE HEALTHY COMMUNITIES DON'T IDLE			AREA MONITORED BY SURVEILLANCE CAMERA				STAFF ONLY	LIBRARY
---	---	---	--	--	---------------------------------------	--	--	--	------------	---------

SWEEP CLEARING AREA = 27,402 FT<sup>2</sup>  
SNOW CLEARING AREA = 27,402 FT<sup>2</sup>

TOTAL STALLS	STAFF	VISITOR	ACCESSIBILITY
59	9	48	2

No:	REVISION/DESCRIPTION	BY	DATE

THE CITY OF WINNIPEG PLANNING, PROPERTY AND DEVELOPMENT DEPARTMENT MUNICIPAL ACCOMMODATIONS DIVISION 365 GARRY STREET				SIR WILLIAM STEPHENSON LIBRARY ENLARGED SITE PLAN WITH AREAS WPA LOT#42 765 KEEWATIN STREET		
DRAWN: PDT	APPROVED:	SCALE: N.T.S.	DATE: 2016.09.01	PROJECT: 2016-105	MAXIMO: LB-23, SP-045	DRAWING: C3



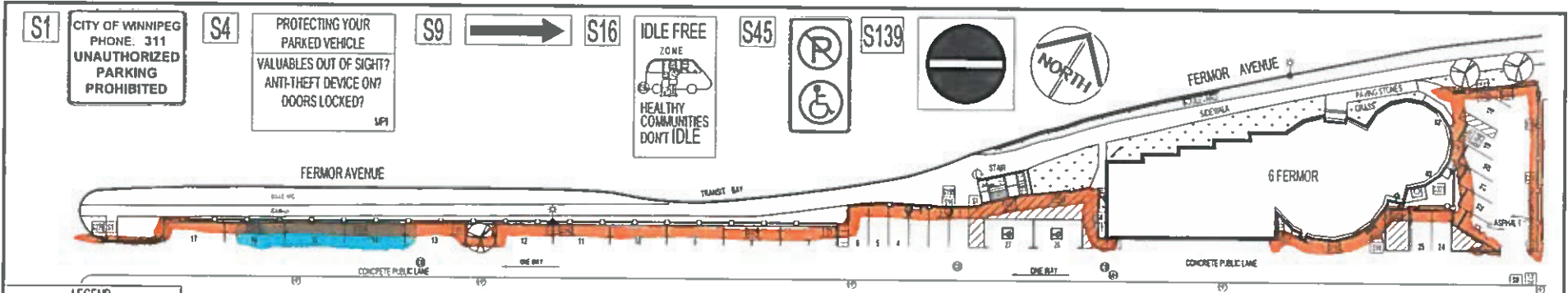
- S1 CITY OF WINNIPEG  
PHONE 311  
UNAUTHORIZED  
PARKING  
PROHIBITED
- S4 PROTECTING YOUR  
PARKED VEHICLE  
VALUABLES OUT OF SIGHT?  
ANTI-THEFT DEVICE ON?  
DOORS LOCKED?  
MPI
- S16 IDLE FREE  
ZONE  
  
HEALTHY COMMUNITIES  
DON'T IDLE
- S35   
PARKING  
ONLY
- S40   
FIRE LANE  
By City Ordinance
- S45   
  
S100   
FIRE LANE
- S137   
FIRE LANE  
S138
- S159   
LOADING
- S158
- S160 EMPLOYEE PARKING  
STALLS 1 - 4
- S161 LIBRARY PATRON  
PARKING ONLY  
STATIONNEMENT  
RÉSERVÉ AU USAGES DE  
LA BIBLIOTHÈQUE
- S261 One Way
- S390
- S542   
VISITORS  
PLEASE  
REGISTER  
YOUR PLATES  
AT RECEPTION
- S826   
DAKOTA  
FIELDHOUSE

No.	REVISION/DESCRIPTION	BY	DATE
1	UPDATED SIGNS, ADDED THE ENTRANCE FOR DAKOTA FIELD HOUSE	PD	SEPT 18, 2018

TOTAL STALLS	RESERVED	STAFF	VISITOR	ACCESS.	UNMARKED
46	0	5	37	4	0

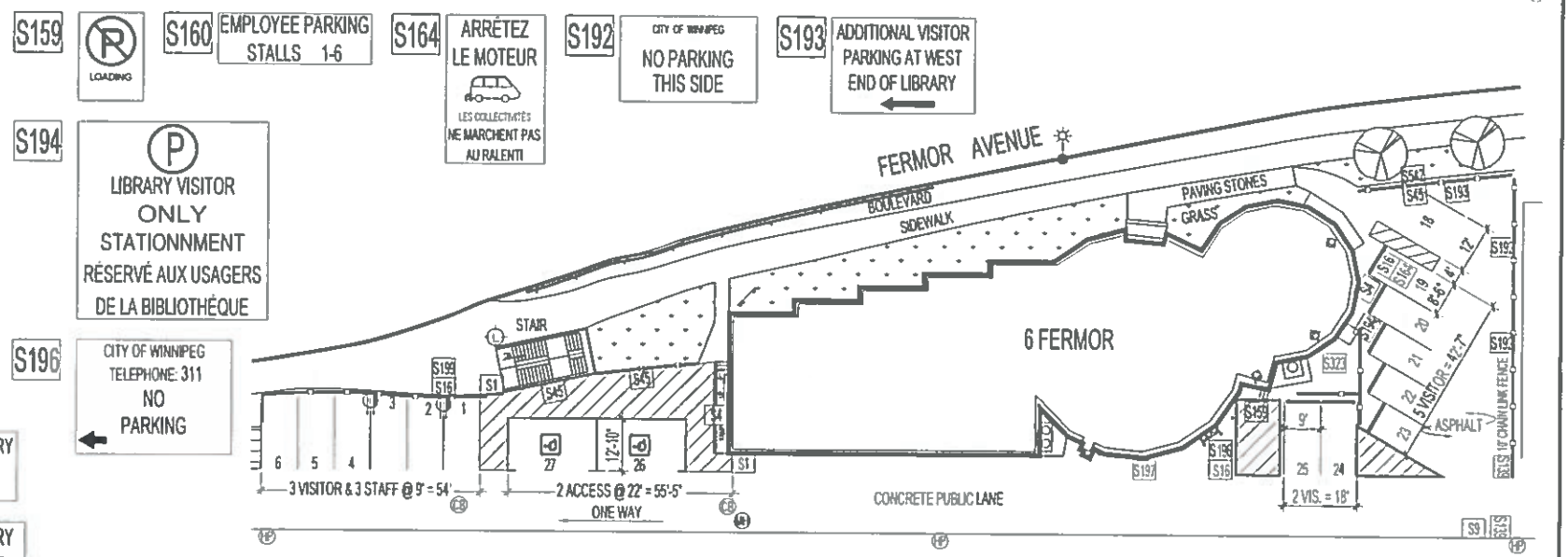
  

THE CITY OF WINNIPEG PLANNING, PROPERTY AND DEVELOPMENT DEPARTMENT MUNICIPAL ACCOMMODATIONS DIVISION 3-65 GARRY STREET		LOUIS RIEL LIBRARY SITE PLAN WPA LOT # 22 1168 DAKOTA STREET				
DRAWN: BRD	APPROVED:	SCALE: N.T.S.	DATE: 2016.09.19	PROJECT: 2016-107	MAXIMO: SP-023	DRAWING: C2

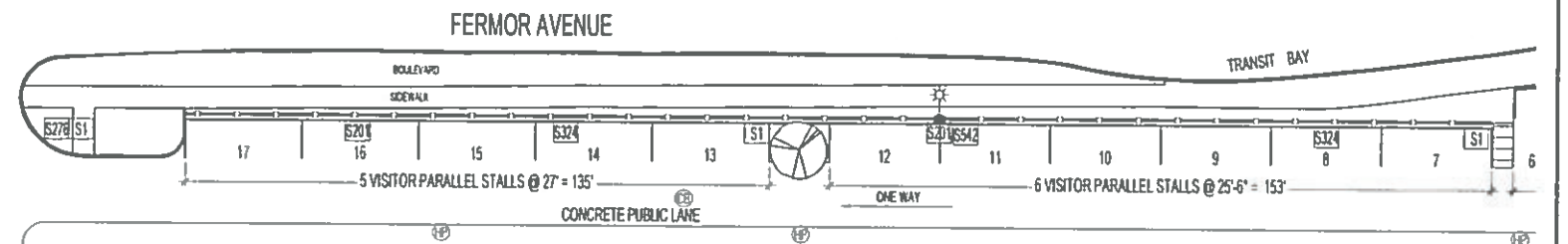


**LEGEND**

	WATER VALVE
	MANHOLE
	CATCH BASIN
	WATER METER W/VALVE
	FIRE HYDRANT
	GAS METER
	GAS VALVE W/ SHUT-OFF
	HYDRO POLE WAUGHT
	STREET/PROPERTY LIGHT
	LIGHT
	DUPLEX RECEPTACLE
	HYDRO POLE
	ELECTRICITY METER
	ELECTRICITY PANEL
	PARKING FENCE
	TREE
	GRASS



- S197 ADDITIONAL LIBRARY PARKING
- S199 St. VITAL LIBRARY STAFF PARKING ONLY STALLS 1-3
- S200 LIBRARY VISITOR ONLY
- S201 LIBRARY VISITOR PARKING PARALLEL ONLY
- S276 STOP



SWEEP CLEARING AREA "A" = 3,387 FT<sup>2</sup>  
 SNOW CLEARING AREA "A" = 3,387 FT<sup>2</sup>  
 SWEEP CLEARING AREA "B" = 6,086 FT<sup>2</sup>  
 SNOW CLEARING AREA "B" = 6,086 FT<sup>2</sup>

TOTAL STALLS	VISITOR	STAFF	WPA RSVD	CoW MARKED	CoW UNMARKED	ACCESSIBILITY
27	22	3	0	0	0	2

**St. Vital Library**  
 Bibliothèque de Saint-Vital

ENTRANCE / ENTREE

S542 VISITORS PLEASE REGISTER YOUR PLATES AT RECEPTION

No.	REVISION/DESCRIPTION	BY	DATE
1	UPDATED SIGNS & STALLS	PD	JUN 26, 2018

THE CITY OF WINNIPEG  
 PLANNING, PROPERTY AND DEVELOPMENT  
 DEPARTMENT MUNICIPAL ACCOMMODATIONS DIVISION  
 3-65 GARRY STREET 2016-107 0006FM.dwg

ST. VITAL LIBRARY  
 SITE PLAN  
 WPA LOT #29  
 6 FERMOR AVENUE

MAXIMO: LB-16, SP-030

DRAWN: DTA APPROVED: SCALE: N.T.S. DATE: 2017.01.15 PROJECT: 2016-107 DRAWING: C1