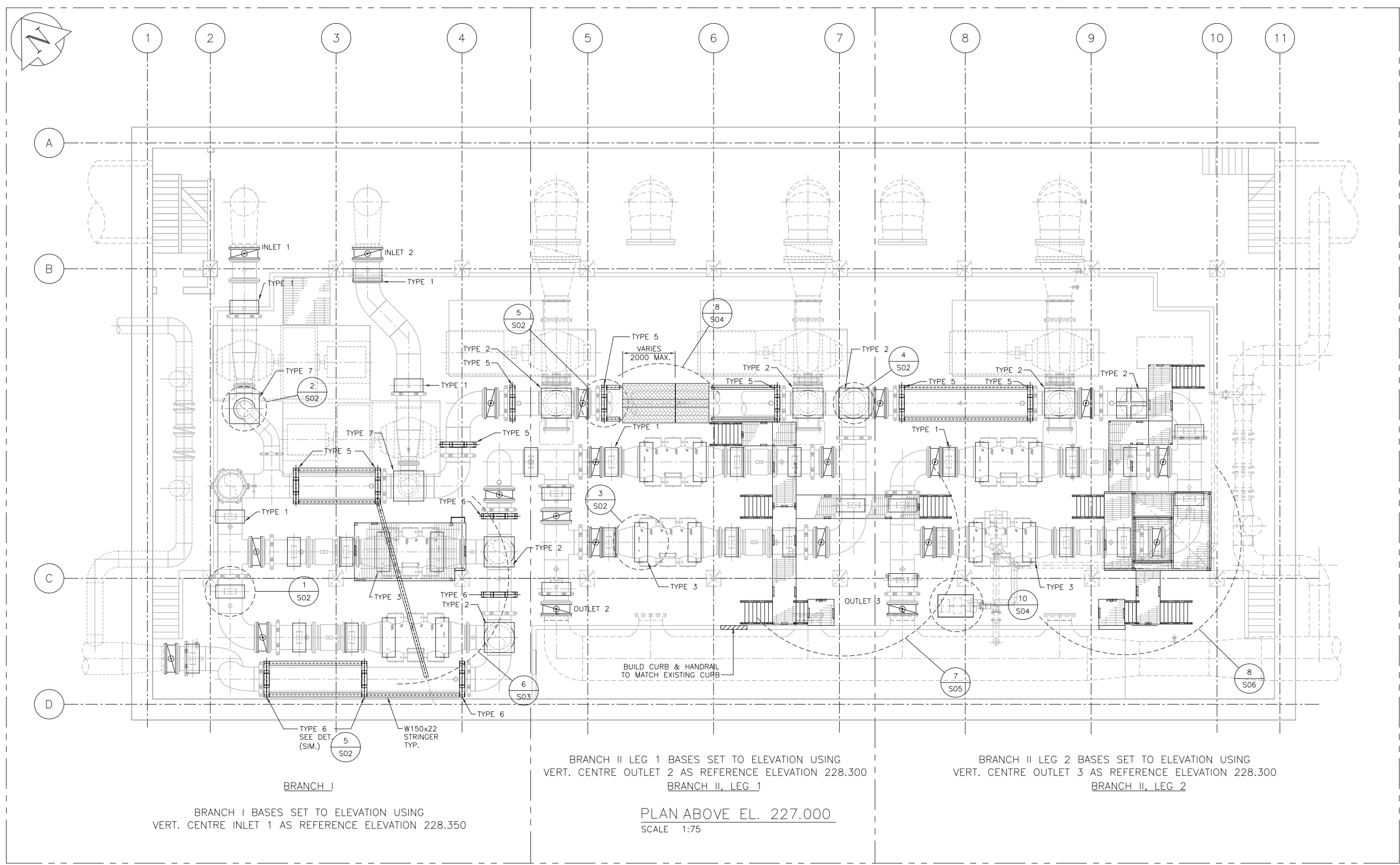


SHEET: CWP-A1- (1/2003) P:\121979-WINNIPEG\DELIVERABLES\04-03-18-FC-REV2\CS01.DWG MAR 18 2004 1:34 p.m. LAYOUT: Levou11 USER: tcb01



BRANCH I BASES SET TO ELEVATION USING VERT. CENTRE INLET 1 AS REFERENCE ELEVATION 228.350

BRANCH II LEG 1 BASES SET TO ELEVATION USING VERT. CENTRE OUTLET 2 AS REFERENCE ELEVATION 228.300
BRANCH II, LEG 1

BRANCH II LEG 2 BASES SET TO ELEVATION USING VERT. CENTRE OUTLET 3 AS REFERENCE ELEVATION 228.300
BRANCH II, LEG 2

PLAN ABOVE EL. 227.000
SCALE 1:75

- NOTES:
- GALVANIZED GRATING, LADDER, STAIR TREADS AND LIFTING EYES.
 - PAINTED STEEL FABRICATIONS FOR HANDRAILS, PLATFORMS, PIPE SUPPORT FRAMES AND MONORAIL BEAMS.
 - PIPE SUPPORTS:
TYPE 1: 30; TYPE 2: 7; TYPE 3: 12; TYPE 5: 8; TYPE 6: 5; TYPE 7: 2.
SEE DRAWING D-8389 FOR DETAILS
 - L.L. FOR PLATFORM AND WALKWAY:
L.L. FOR WALKWAY 2.5kN/m²; L.L. FOR PLATFORM 13.5 kN/m².

RECORD DRAWING

APECM
Certificate of Authorization
Earth Tech Canada Inc.
No. 730 Expiry: April 30, 2004

NO.	REVISIONS	DATE	BY	DATE
3	RECORD DRAWING	07/01/30	SRP	
2	AS BUILT	05/01/19	NH	
2	SUPPORTS REVISED	04/03/18	TAR	
1	ISSUED FOR CONSTRUCTION	04/02/27	TAR	
0	ISSUED FOR TENDER	03/12/12	WW	

DESIGNED BY	DRAWN BY	HOR. SCALE:	VERTICAL SCALE:	DATE
WW	WW	1:75		2003/11/12

CHECKED BY	APPROVED BY	RELEASED FOR CONSTRUCTION BY:	DATE
DK	DT		

ENGINEER'S SEAL	ORIGINAL SIGNED BY	DATE	CONSULTANT DRAWING NO.
	D. KRUGER	03/12/13	63672-C5-S01

THE CITY OF WINNIPEG
Winnipeg WATER AND WASTE DEPARTMENT

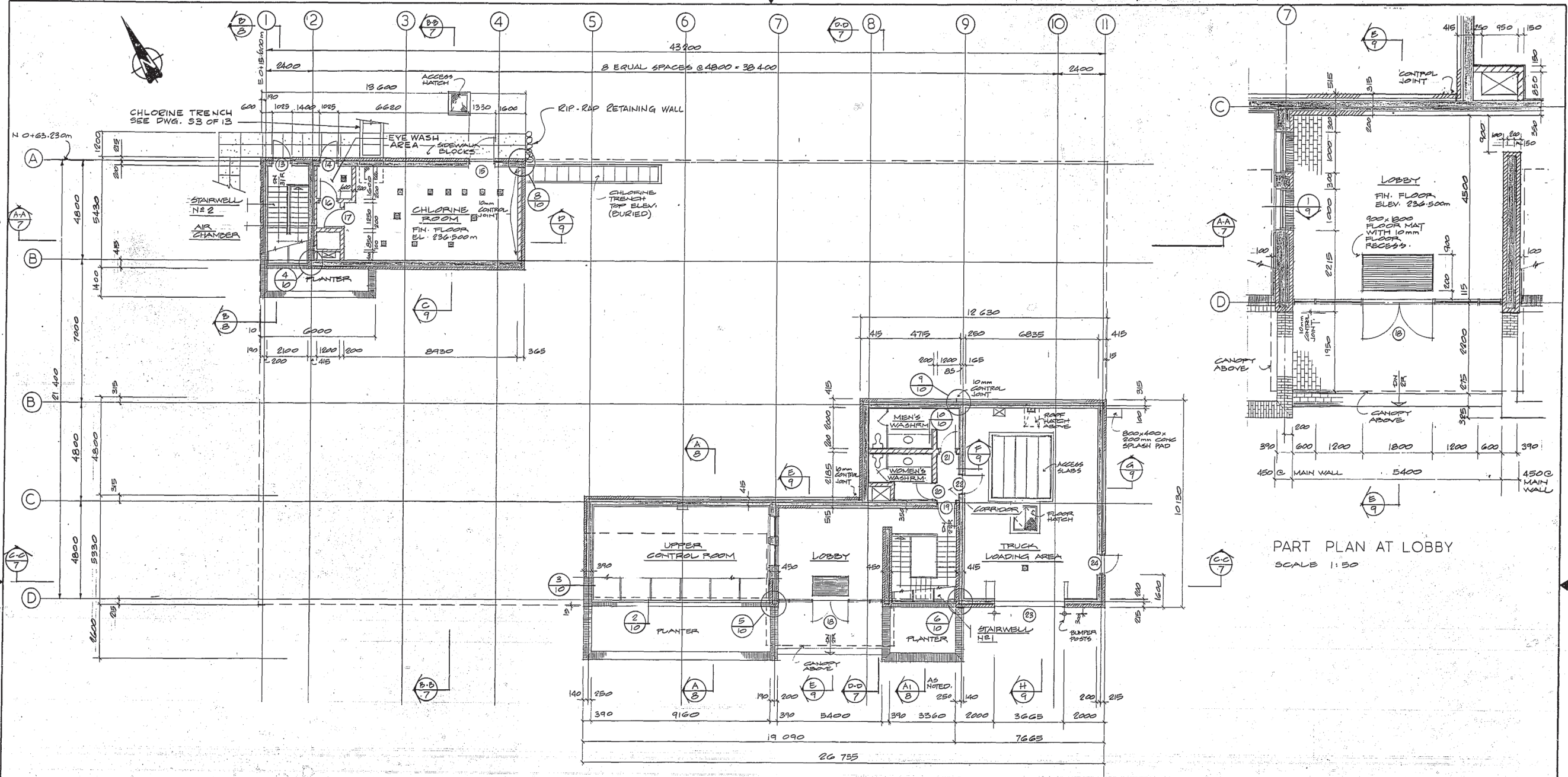
DEACON ULTRAVIOLET (UV) LIGHT DISINFECTATION PROJECT

STRUCTURAL - UV INSTALLATION OVERALL PLAN

CITY FILE NUMBER
SHEET 1 OF 10
CITY DRAWING NUMBER
D-8388

REF. or DRAWING No. _____
DETAILS

DBP-5
 Part Plan Above Elev. 236.500 m



PLAN ABOVE FLOOR ELEV. 236.500 m
 SCALE 1:100

PART PLAN AT LOBBY
 SCALE 1:50

DIMENSIONS IN MILLIMETRES
 EXCEPT AS NOTED

COMBINATION OF DIVISIONS OF ENGINEERING OFFICE	CENTRAL FILE	ENGINEERING OFFICE	DATE FILMED
	DRAWING FILE NUMBER		
GRID CO-ORDINATES MICROFILMING	WORKS & OPERATIONS DEPARTMENT		

REV.	DESCRIPTION	BY	DATE
1	REVISED TO AS BUILT	RM	APR 80

JAMES F. MACLAREN LIMITED
 CONSULTING ENGINEERS, PLANNERS AND SCIENTISTS
 WINNIPEG - LONDON - WINDSOR - WATERLOO - TORONTO

DRAWN BY: T.F. DESIGNED BY: T.F.
 CHECKED BY: C.V.W. APPROVED BY: *[Signature]* DATE

THE CITY OF WINNIPEG
 WATERWORKS, WASTE AND DISPOSAL DIVISION
 DEACON BOOSTER PUMPING STATION

ARCHITECTURAL
 PART PLAN ABOVE ELEV. 236.500 m

13/01/81
AS BUILT



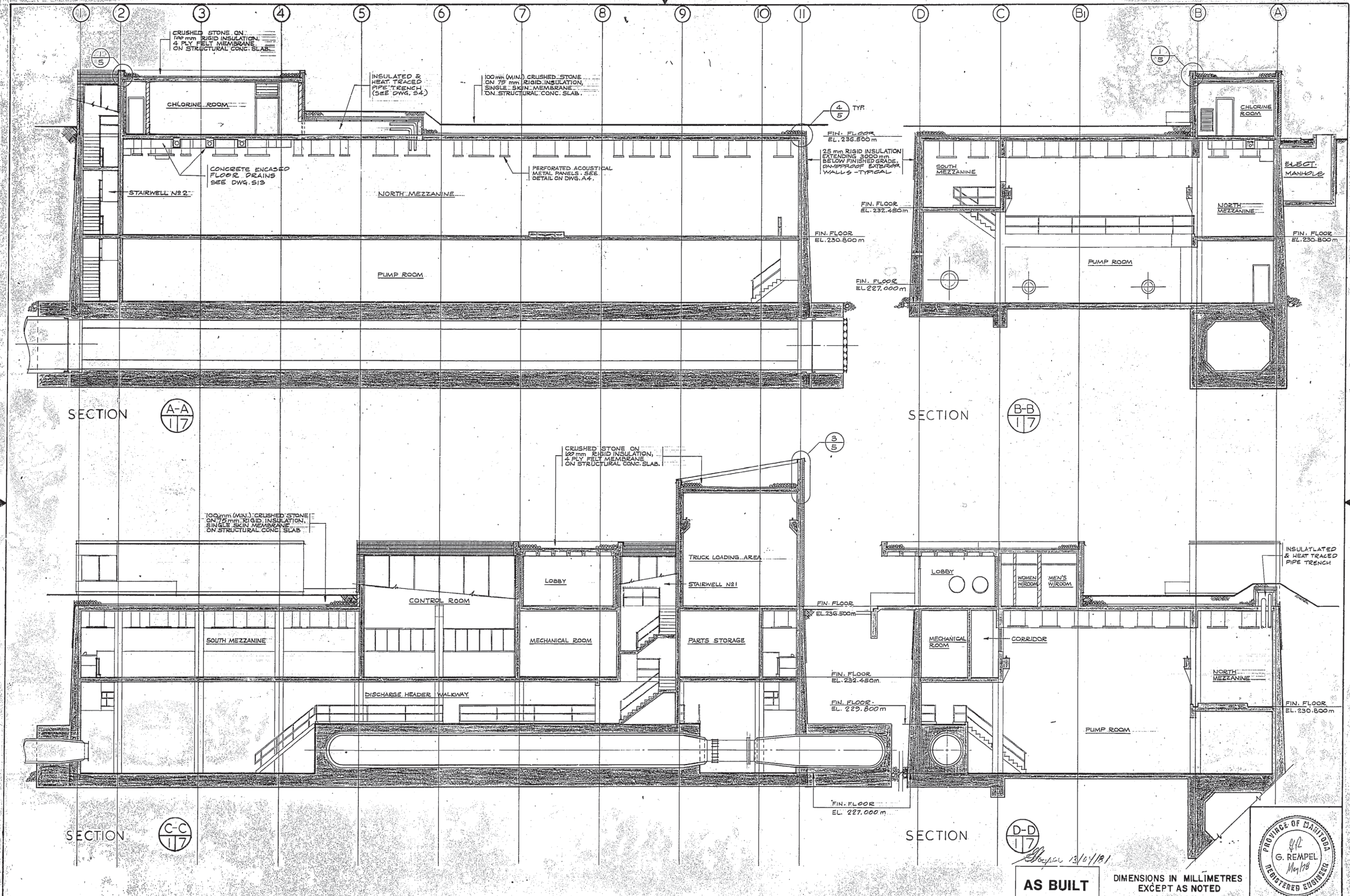
SCALE: AS SHOWN
 DATE: MAY 30, 1978
 CONSULTANT DRAWING No. A 3 of 12
 CITY DRAWING No. DBP-5

BASE DWG IV-A
 PREPARED BY T.F. 8 SEPT. 77
 UPDATED BY T.F. 7 OCT. 77
 BY T.F. 24 NOV. 77
 BY ND. 25 MAY 78

BVA

FINAL

3x



DBP - 9
 Building Cross Sections
 REF. or DRAWING No.
 DETAILS

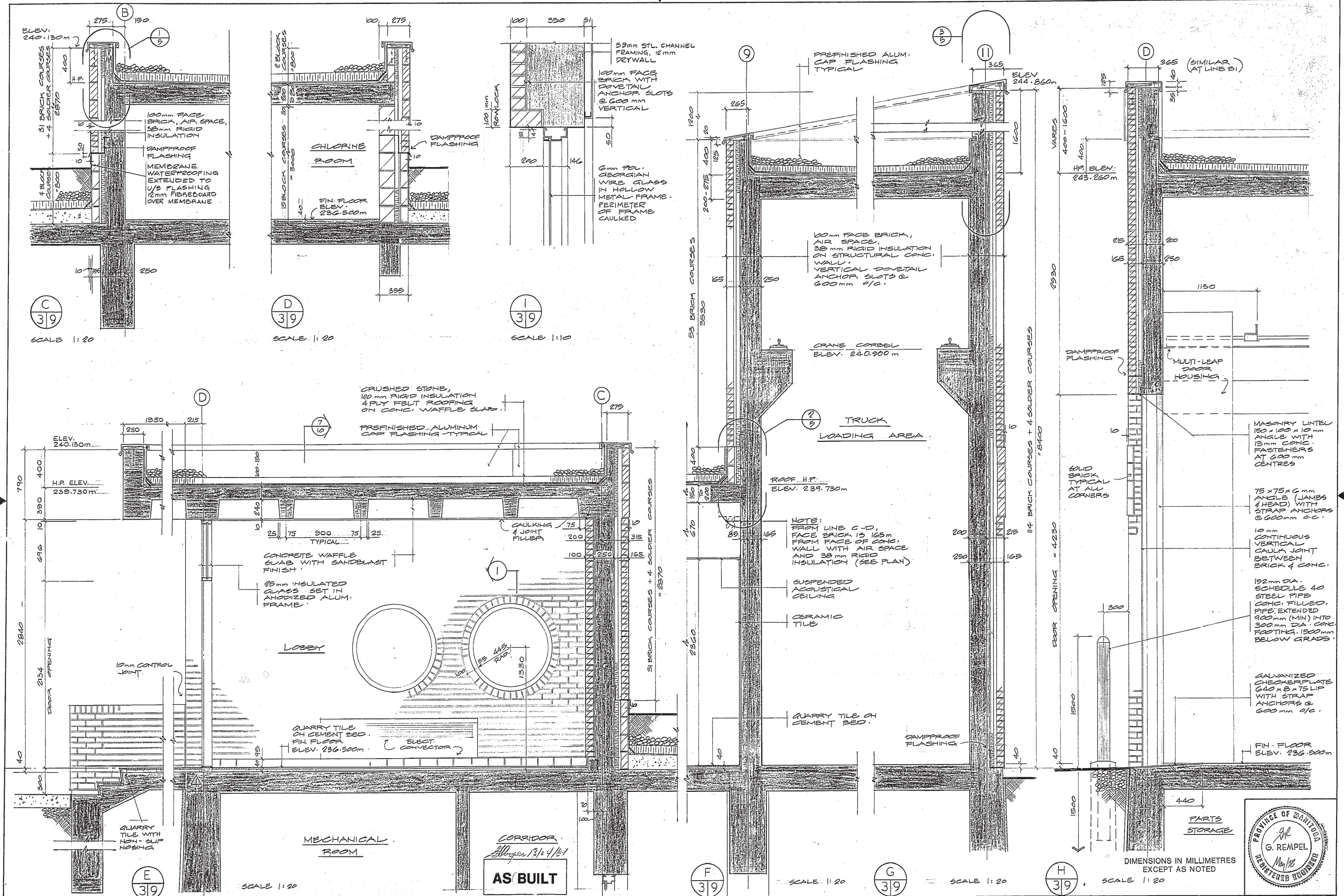
AS BUILT
 DIMENSIONS IN MILLIMETRES
 EXCEPT AS NOTED
 G. REMPEL
 REGISTERED ENGINEER

CONSULTANT JAMES F. MACLAREN LIMITED CONSULTING ENGINEERS, PLANNERS AND SCIENTISTS WINNIPEG - LONDON - WINNIPEG - WATERLOO - TORONTO		THE CITY OF WINNIPEG WATERWORKS, WASTE AND DISPOSAL DIVISION DEACON BOOSTER PUMPING STATION ARCHITECTURAL BUILDING CROSS SECTIONS		SCALE: 1:100 DATE: MAY 30, 1978 CONSULTANT DRAWING No. A7 of 12 CITY DRAWING No. DBP - 9
DRAWING FILE NUMBER WORKS & OPERATIONS DEPARTMENT		DRAWN BY: T.F. DESIGNED BY: T.F. CHECKED BY: C.V.W. APPROVED BY:		REV. 1 DESCRIPTION: REVISED TO AS BUILT BY: T.F. DATE: APR 80

OWENS

FILE 10819-A1-10352

DBP - 11
Sections and Details
REF. or DRAWING No.
DETAILS



CONSULTANT	CENTRAL FILE ENGINEERING OFFICE
DIVISION OF ENGINEERING OFFICE	
DRAWING FILE NUMBER	
GRID CO-ORDINATES	WORKS & OPERATIONS DEPARTMENT
MICROFILMING	
SHEET NO.	
NO. OF SHEETS	
SIZE	
SECTION	
FRAME NO.	
NO. OF FRAMES	
REFERENCE NO.	
DATE FILMED	

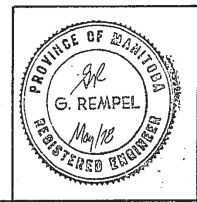
REV.	DESCRIPTION	BY	DATE
1	REVISED TO AS BUILT	JEM	APR 80

JAMES F. MacLAREN LIMITED
CONSULTING ENGINEERS, PLANNERS AND SCIENTISTS
WINNIPEG • LONDON • WINDSOR • WATERLOO • TORONTO

DRAWN BY: T.F.
DESIGNED BY: T.F.
CHECKED BY: C.V.W.
APPROVED BY: *[Signature]*

THE CITY OF WINNIPEG
WATERWORKS, WASTE AND DISPOSAL DIVISION
DEACON BOOSTER PUMPING STATION

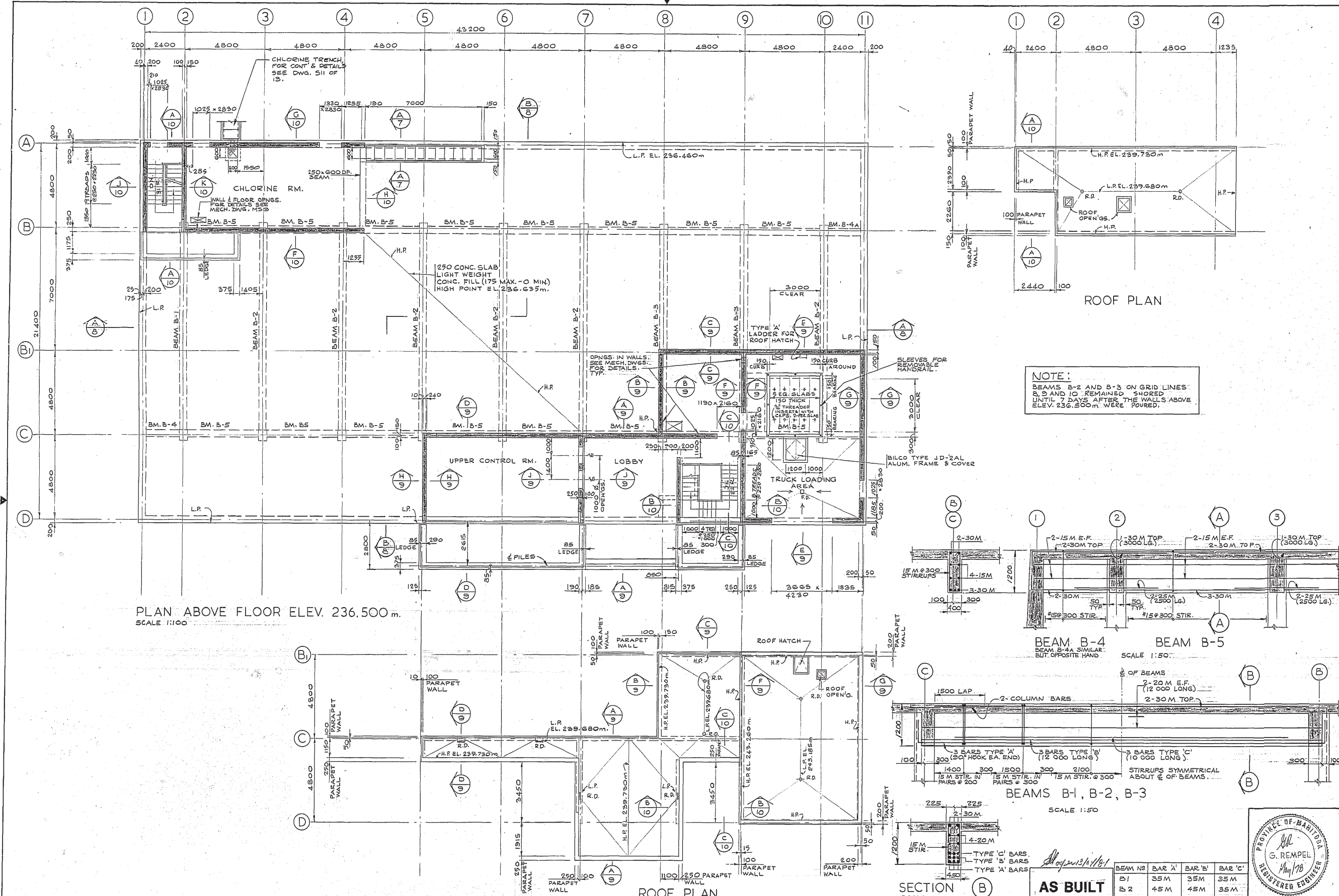
ARCHITECTURAL
SECTIONS & DETAILS



SCALE: AS NOTED
DATE: MAY 30, 1978
CONSULTANT DRAWING No.
A9 of 12
CITY DRAWING No.
DBP - 11

DBP - 18
Plan Above Elev. 236.500 m
and Roof Plans

REF. or DRAWING NO.
DETAILS



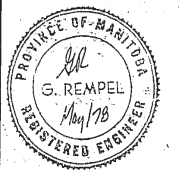
NOTE:
BEAMS B-2 AND B-3 ON GRID LINES B, 9 AND 10 REMAINED SHORED UNTIL 7 DAYS AFTER THE WALLS ABOVE ELEV. 236.500 m WERE POURED.

PLAN ABOVE FLOOR ELEV. 236.500 m.
SCALE 1:100

BEAM B-4 BEAM B-5
SCALE 1:50

BEAMS B-1, B-2, B-3
SCALE 1:50

SECTION B AS BUILT
SCALE 1:50



BEAM NO	BAR 'A'	BAR 'B'	BAR 'C'
B1	35M	35M	35M
B2	45M	45M	35M
B3	45M	45M	45M

CONTRACT NO.	CENTRAL FILE	ENGINEERING OFFICE
DRAWING FILE NUMBER	SHEET NO.	NO. OF SHEETS
GRID CO-ORDINATES	SIZE	SECURITY
MICROFILMING	WORKS & OPERATIONS DEPARTMENT	DATE FILMED

REV.	DESCRIPTION	BY	DATE	CHECKED BY
1	REVISED TO AS BUILT	M.J.M.	MAY 80	C.V.W.

JAMES F. MACLAREN LIMITED
CONSULTING ENGINEERS, PLANNERS AND SCIENTISTS
WINNIPEG · LONDON · WINDSOR · WATERLOO · TORONTO

DRAWN BY: M.J.M. DESIGNED BY: N.R.
APPROVED BY: [Signature] DATE: [Blank]

THE CITY OF WINNIPEG
WATERWORKS, WASTE AND DISPOSAL DIVISION
DEACON BOOSTER PUMPING STATION

STRUCTURAL
PLAN ABOVE ELEV. 236.500 m
AND ROOF PLANS

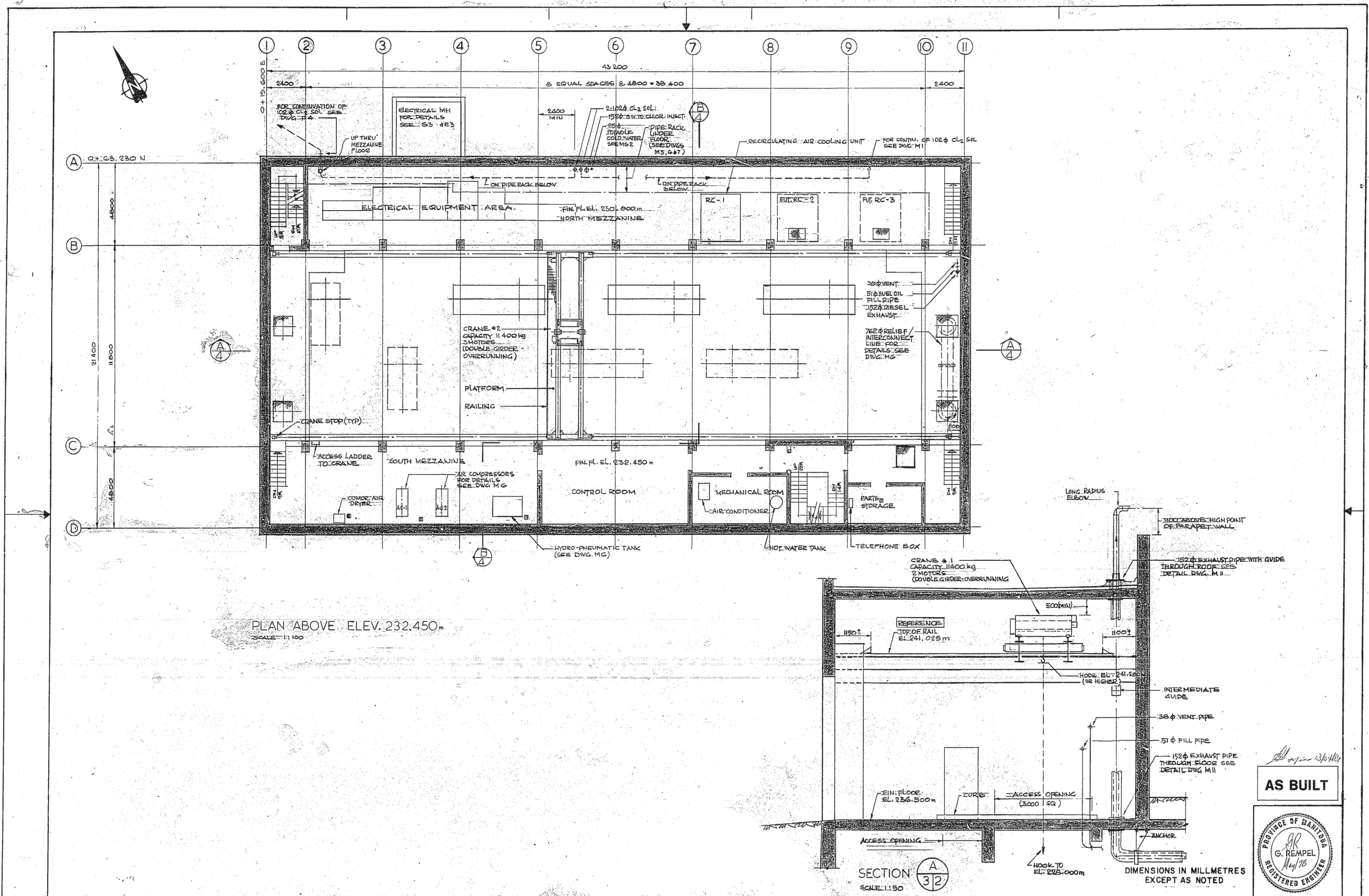
SCALE: AS SHOWN
DATE: MAY 30, 1978.
CONSULTANT DRAWING No.
S4 of 13
CITY DRAWING No.
DBP-18

BASE DRAWING
 PREPARED BY
 UPDATE

BT

STARTS @ 232.450
 9 R & 183: -1650
 8 TH & 250 -2000

FINAL



REF. or DRAWING No. _____
 DETAILS _____

CONTRACTOR	CENTRAL FILE	ENGINEERING OFFICE	DATE FILMED
DRAWING FILE NUMBER	NO. OF SHEETS	NO. OF SHEETS	NO. OF SHEETS
GRID CO-ORDINATES	WORKS & OPERATIONS DEPARTMENT		

REV.	DESCRIPTION	BY	DATE
1	REVISED TO AS BUILT		JUN 80

JAMES F. MACLAREN LIMITED
 CONSULTING ENGINEERS, PLANNERS AND SCIENTISTS
 WINNIPEG • LONDON • WINDSOR • WATERLOO • TORONTO

DRAWN BY: L.M.
 DESIGNED BY: G.A.A.
 CHECKED BY: G.A.A.
 APPROVED BY: _____

THE CITY OF WINNIPEG
 WATERWORKS, WASTE AND DISPOSAL DIVISION
DEACON BOOSTER PUMPING STATION

MECHANICAL
PLAN ABOVE ELEV. 232.450 m

AS BUILT

PROVINCE OF MANITOBA
G. REMPEL
 REGISTERED ENGINEER

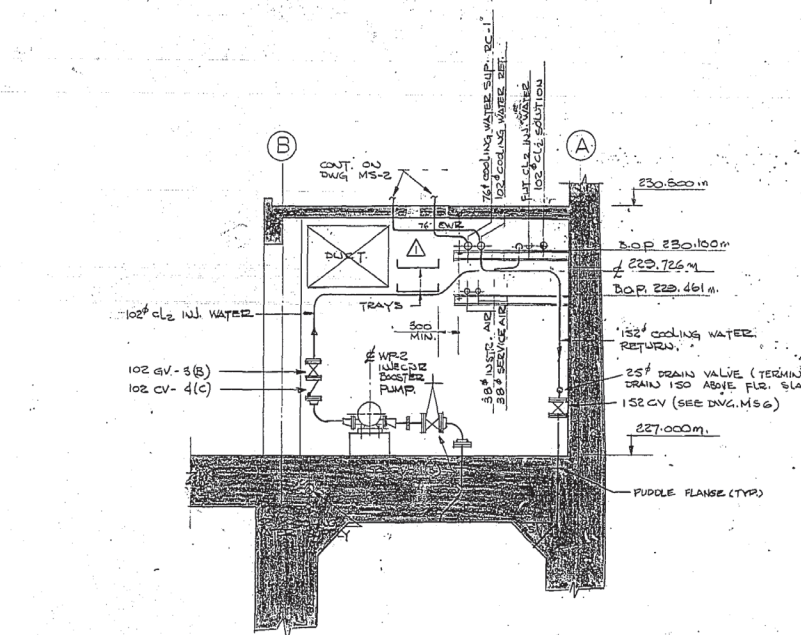
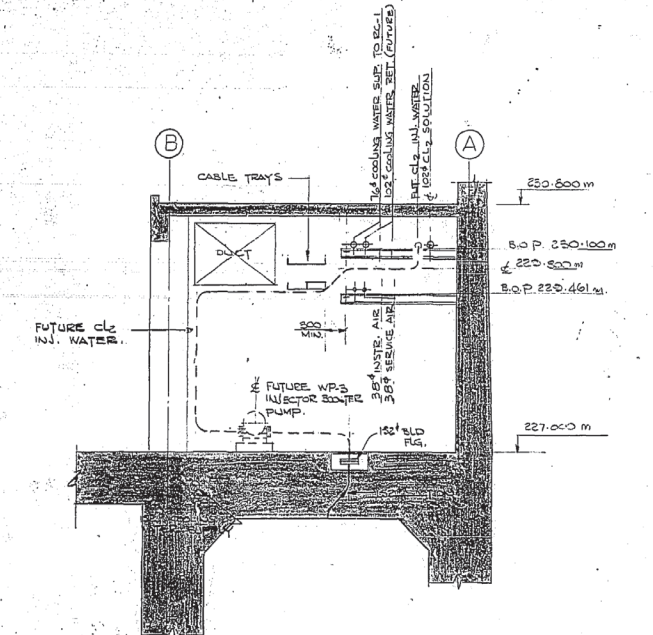
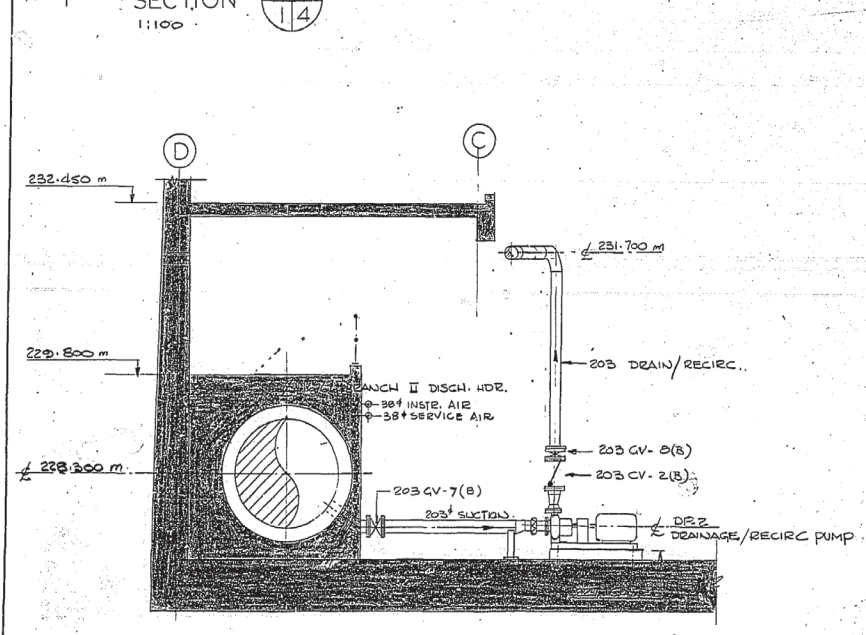
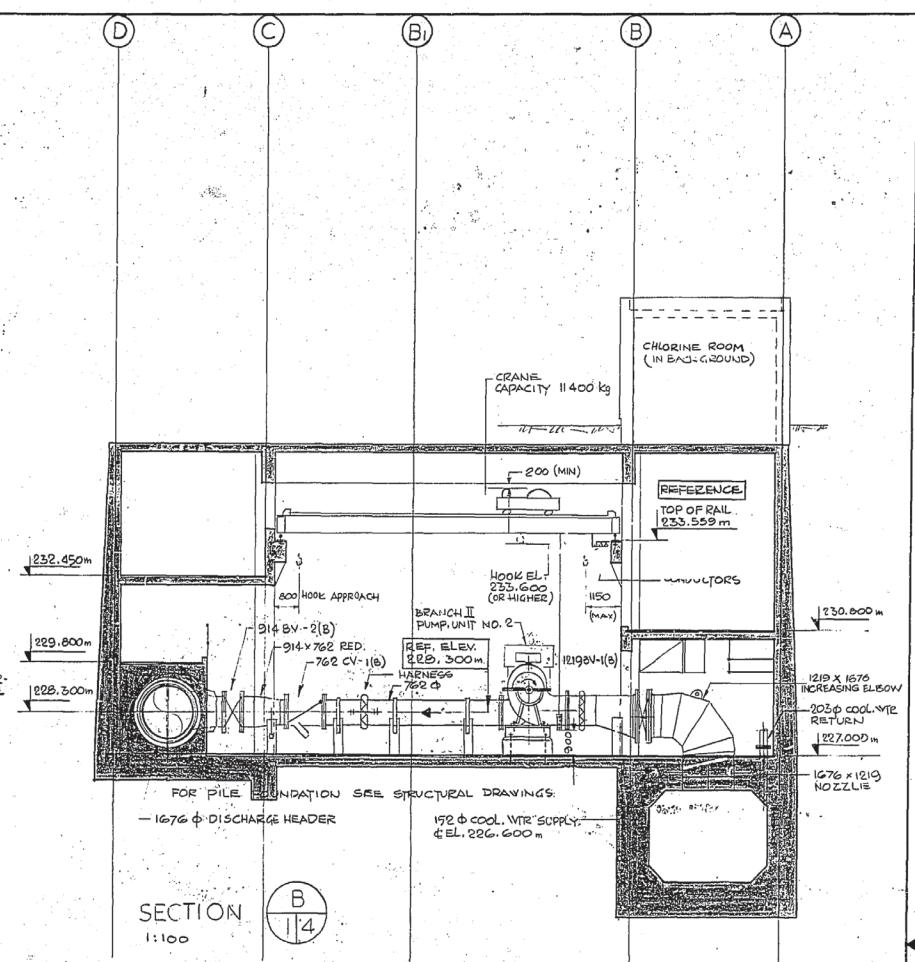
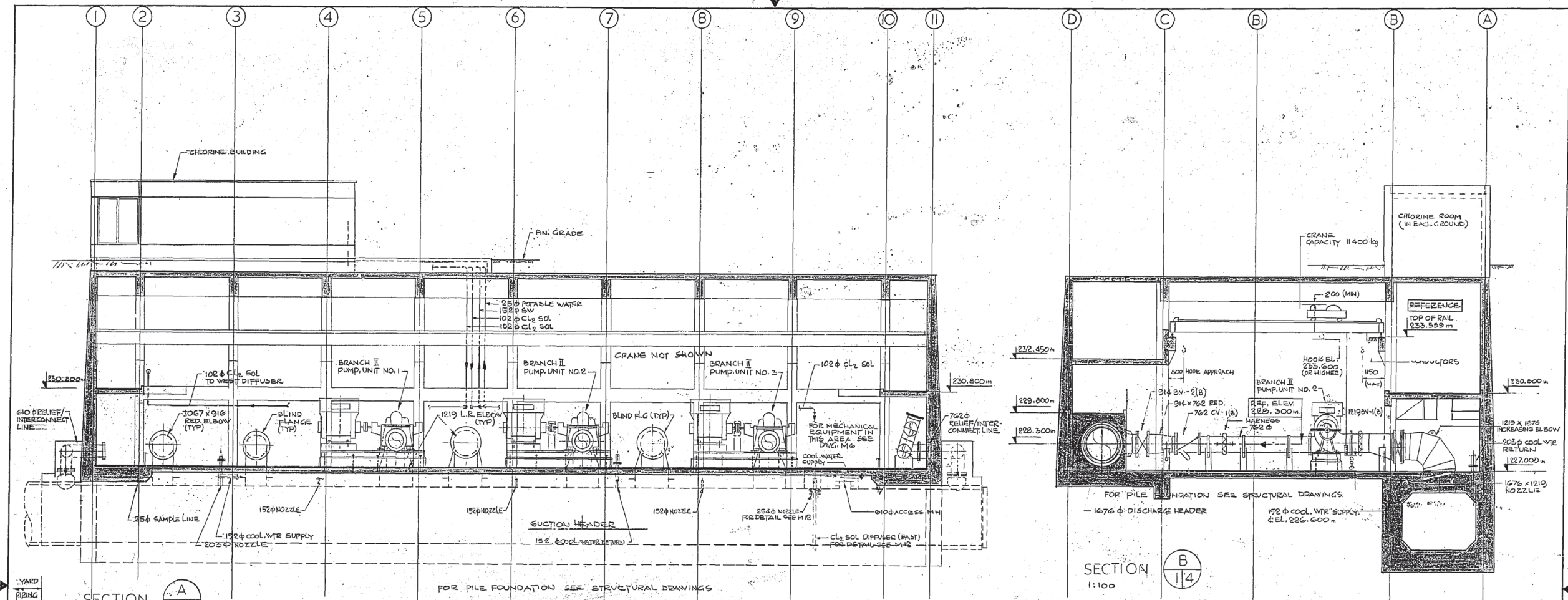
SCALE: AS SHOWN
 DATE: MAY 30, 1978
 CONSULTANT DRAWING No.
M2 of 12
 CITY DRAWING No.
 DBP-29

BASE DWG. V
 PREPARED BY L.M. 26 JULY 77
 UPDATED BY T.F. 7 SEPT 77
 BY T.F. 7 OCT. 77
 BY W.D. 25 MAY 78

BTV

FINAL

4x



AS BUILT



CONTRACT NO.	CENTRAL FILE	ENGINEERING OFFICE	SHEET NO.	NO. OF SHEETS	DATE FILMED
DIVISION	DRAWING FILE NUMBER		SIZE		
UTILITY			MEDIUM		
OFFICE			SECURITY		
			FRAME NO.		
			NO. OF FRAMES		
			REFERENCE NO.		

REV.	DESCRIPTION	BY	DATE
1	REVISED TO AS BUILT	W.D.	JUN 80

JAMES F. MACLAREN LIMITED
 CONSULTING ENGINEERS, PLANNERS AND SCIENTISTS
 WINNIPEG - LONDON - WINDSOR - WATERLOO - TORONTO

DRAWN BY: L.M./C.S. DESIGNED BY: G.A.A.
 CHECKED BY: G.A.A. APPROVED BY: *[Signature]*

THE CITY OF WINNIPEG
 WATERWORKS, WASTE AND DISPOSAL DIVISION
DEACON BOOSTER PUMPING STATION

MECHANICAL SECTIONS

SCALE: AS SHOWN
 DATE: MAY 30, 1978
 CONSULTANT DRAWING NO.
M4 of 12
 CITY DRAWING NO.
 DBP-31