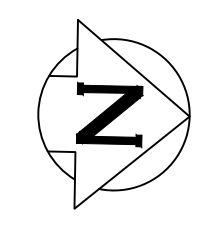
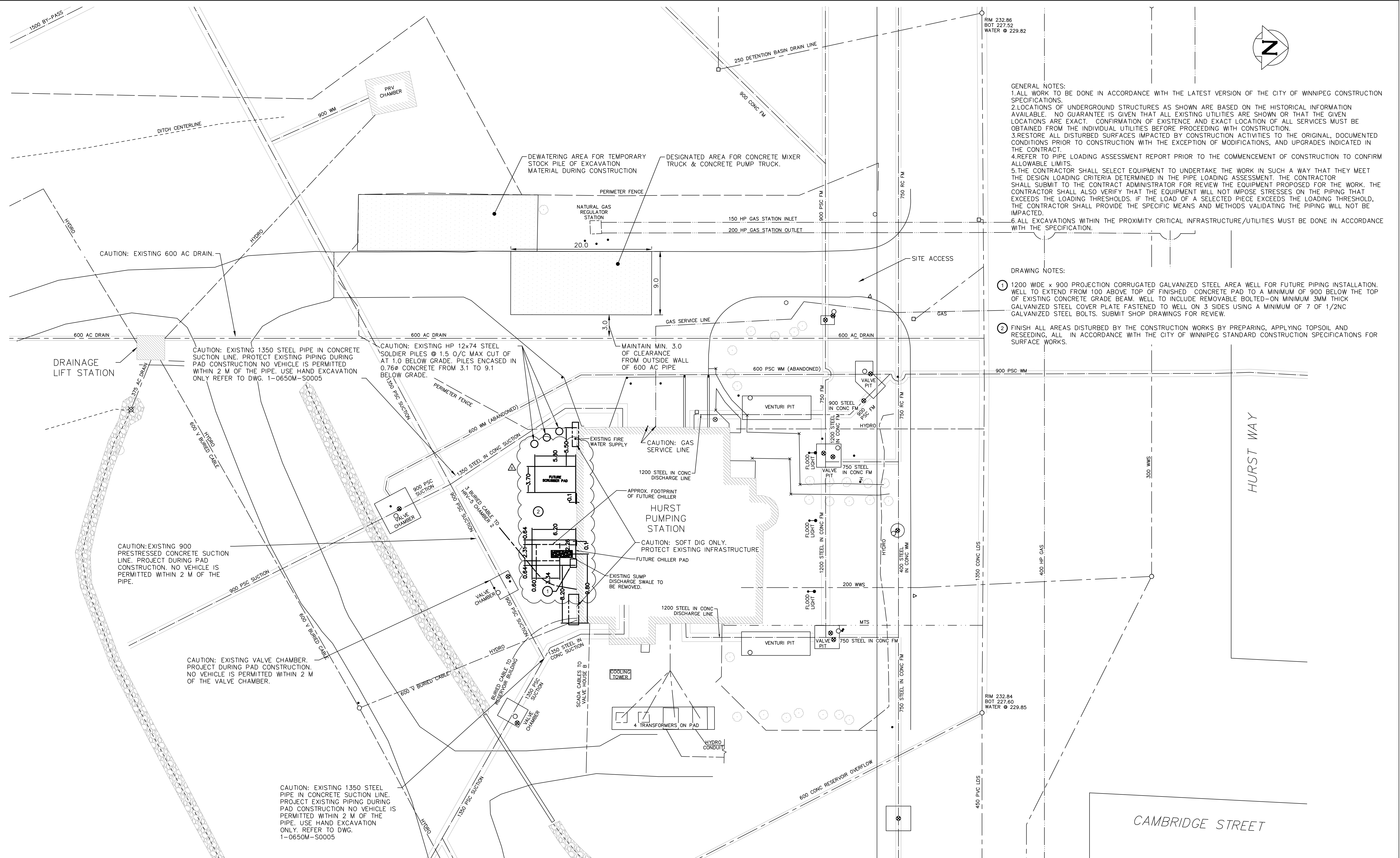


AT SIZE: 84mm x 84mm
 LAST SAVE: 2023/02/28 8:53 PM
 PATH: C:\Users\Aurora\OneDrive\Downloads\2023-02-28\2023-02-28\1-0650A-C0001-001_V2.dwg



GENERAL NOTES:
 1. ALL WORK TO BE DONE IN ACCORDANCE WITH THE LATEST VERSION OF THE CITY OF WINNIPEG CONSTRUCTION SPECIFICATIONS.
 2. LOCATIONS OF UNDERGROUND STRUCTURES AS SHOWN ARE BASED ON THE HISTORICAL INFORMATION AVAILABLE. NO GUARANTEE IS GIVEN THAT ALL EXISTING UTILITIES ARE SHOWN OR THAT THE GIVEN LOCATIONS ARE EXACT. CONFIRMATION OF EXISTENCE AND EXACT LOCATION OF ALL SERVICES MUST BE OBTAINED FROM THE INDIVIDUAL UTILITIES BEFORE PROCEEDING WITH CONSTRUCTION.
 3. RESTORE ALL DISTURBED SURFACES IMPACTED BY CONSTRUCTION ACTIVITIES TO THE ORIGINAL, DOCUMENTED CONDITIONS PRIOR TO CONSTRUCTION WITH THE EXCEPTION OF MODIFICATIONS, AND UPGRADES INDICATED IN THE CONTRACT.
 4. REFER TO PIPE LOADING ASSESSMENT REPORT PRIOR TO THE COMMENCEMENT OF CONSTRUCTION TO CONFIRM ALLOWABLE LIMITS.
 5. THE CONTRACTOR SHALL SELECT EQUIPMENT TO UNDERTAKE THE WORK IN SUCH A WAY THAT THEY MEET THE DESIGN LOADING CRITERIA DETERMINED IN THE PIPE LOADING ASSESSMENT. THE CONTRACTOR SHALL SUBMIT TO THE CONTRACT ADMINISTRATOR FOR REVIEW THE EQUIPMENT PROPOSED FOR THE WORK. THE CONTRACTOR SHALL ALSO VERIFY THAT THE EQUIPMENT WILL NOT IMPOSE STRESSES ON THE PIPING THAT EXCEEDS THE LOADING THRESHOLDS. IF THE LOAD OF A SELECTED PIECE EXCEEDS THE LOADING THRESHOLD, THE CONTRACTOR SHALL PROVIDE THE SPECIFIC MEANS AND METHODS VALIDATING THE PIPING WILL NOT BE IMPACTED.
 6. ALL EXCAVATIONS WITHIN THE PROXIMITY CRITICAL INFRASTRUCTURE/UTILITIES MUST BE DONE IN ACCORDANCE WITH THE SPECIFICATION.

DRAWING NOTES:
 ① 1200 WIDE x 900 PROJECTION CORRUGATED GALVANIZED STEEL AREA WELL FOR FUTURE PIPING INSTALLATION. WELL TO EXTEND FROM 100 ABOVE TOP OF FINISHED CONCRETE PAD TO A MINIMUM OF 900 BELOW THE TOP OF EXISTING CONCRETE GRADE BEAM. WELL TO INCLUDE REMOVABLE BOLTED-ON MINIMUM 3MM THICK GALVANIZED STEEL COVER PLATE FASTENED TO WELL ON 3 SIDES USING A MINIMUM OF 7 OF 1/2NC GALVANIZED STEEL BOLTS. SUBMIT SHOP DRAWINGS FOR REVIEW.
 ② FINISH ALL AREAS DISTURBED BY THE CONSTRUCTION WORKS BY PREPARING, APPLYING TOPSOIL AND RESEEDING, ALL IN ACCORDANCE WITH THE CITY OF WINNIPEG STANDARD CONSTRUCTION SPECIFICATIONS FOR SURFACE WORKS.

1-0640A-C0002-001	STRUCTURAL REPAIRS AND DRAINAGE BUILDING UPGRADES MUNICIPAL GRADING PLAN
WH5621-1	WILKES AVE. RESERVOIRS NO. 1 & 2 GENERAL ARRANGEMENT
WH5621-4	WILKES AVE. RESERVOIRS NO. 1 & 2 DRAINAGE SEWER DETAILS
WH5621-17	WILKES AVE. RESERVOIRS NO. 1 & 2 DETAILS OF VALVE PITS 'G' & 'H' FOR 48" BUTTERFLY VALVES
WH5621-19	WILKES AVE. RESERVOIRS NO. 1 & 2 DETAILS OF VALVE PIT 'C' FOR 2-36" AND 1-24: BUTTERFLY VALVES
WH5622-18	WILKES AVE. PUMPING STATION SITE PLAN SHOWING PIPE LAYOUT
WH5622-20	WILKES AVE. PUMPING STATION MAIN PIPE LAYOUT SECTIONS
WH5622-26	WILKES AVE. PUMPING STATION DETAILS OF VALVE PITS 'C', 'D', AND 'E'
WH5622-27	WILKES AVE. PUMPING STATION VENTURI METER PITS DET'S
D-1027	WILKES AVE. FEEDERMAIN, WILKES AVE. -460 FT. W. OF WAVERLEY TO W.D. HURST PUMPING STATION
DRAWING NUMBER	REFERENCE DRAWINGS

METRIC
 WHOLE NUMBERS INDICATE MILLIMETRES
 DECIMALIZED NUMBERS INDICATE METRES
 NOTE: ALL VALVES INSTALLED COUNTERCLOCKWISE TO CLOSE

NO.	REVISIONS	DATE	DESIGN	CHECK
0	ISSUED FOR TENDER	2023/03/27	CF	CC
1	ISSUED AS-BUILT	2022/04/14	-	-
00	ISSUED FOR CONSTRUCTION	2020/06/18	-	-

AECOM

DESIGNED BY: CC
 CHECKED BY: RC
 DRAWN BY: RJ
 APPROVED BY: BP
 SCALE: 1:250
 DATE: 2023/01/30
 CONSULTANT NO.: 60664207

ENGINEER'S SEAL

THE CITY OF WINNIPEG
 WATER AND WASTE DEPARTMENT

HURST PUMPING STATION
 STRUCTURAL REPAIRS AND DRAINAGE BUILDING UPGRADES
 MUNICIPAL
 SITE PLAN

CITY DRAWING NUMBER: 1-0650A-C0001
 SHEET: 001
 REV: 2
 SIZE: A1