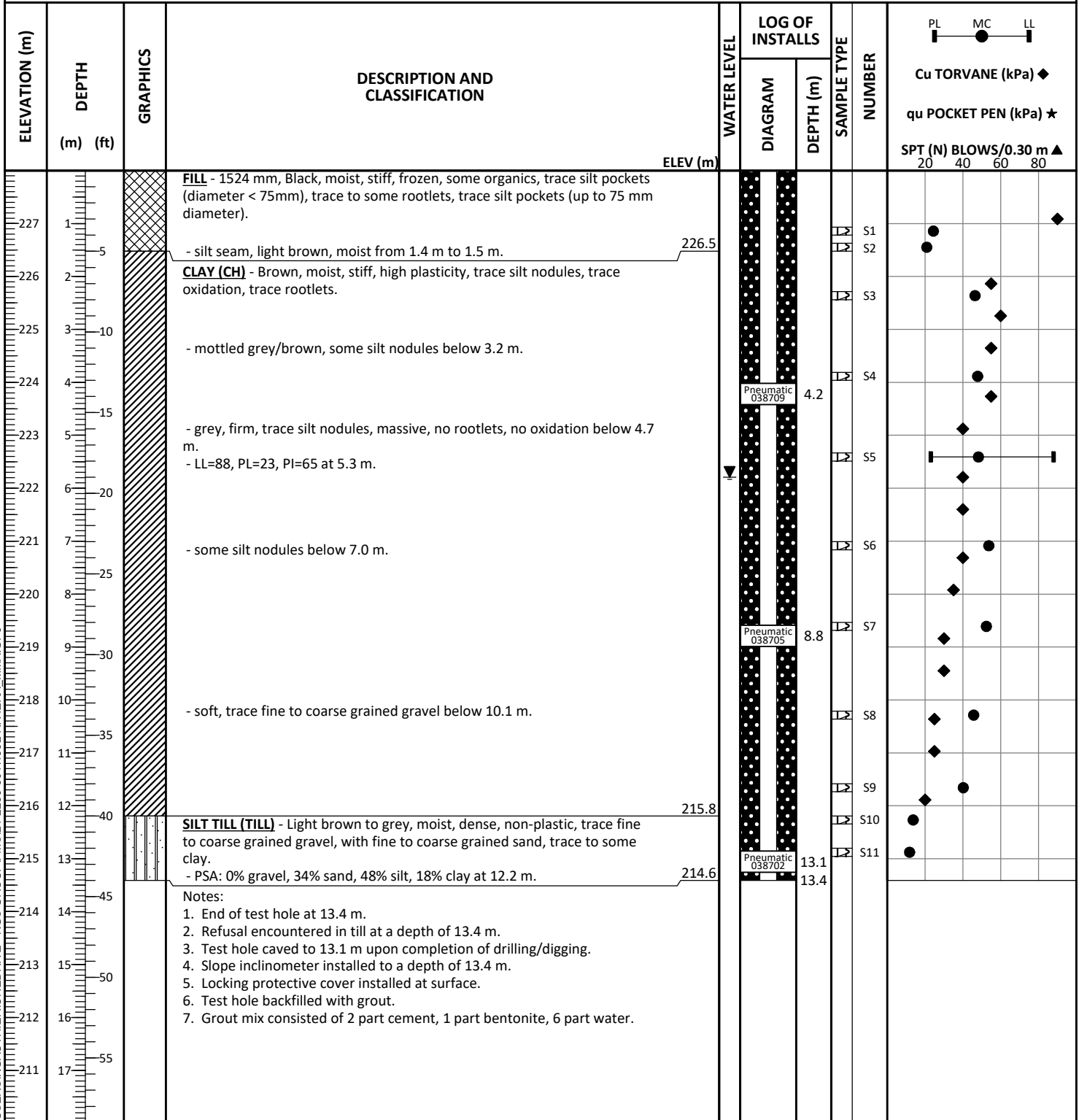


APPENDIX C

SOIL LOG INFORMATION

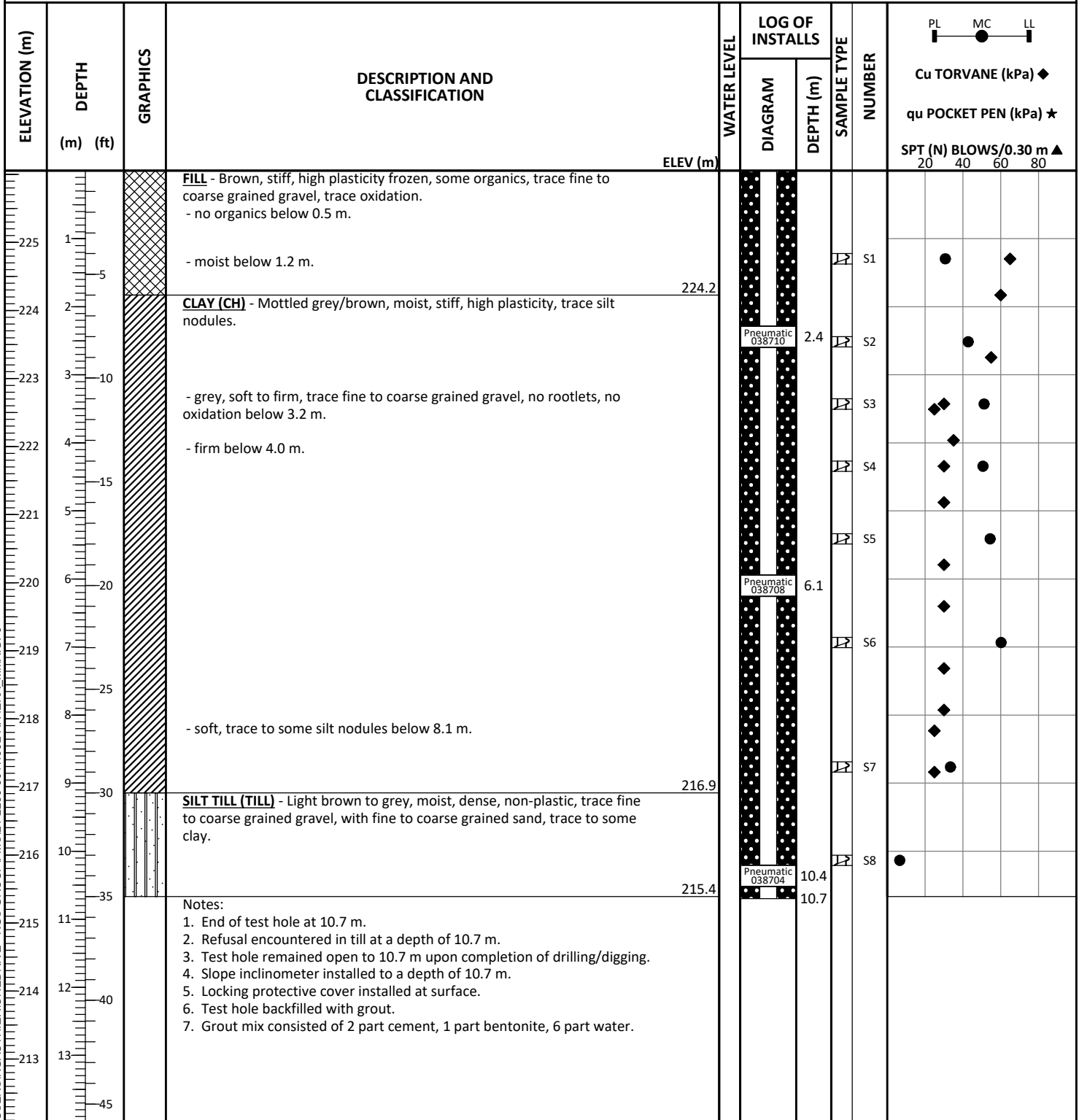
CLIENT	TRI-CORE PROJECTS MANITOBA LTD.	PROJECT NO.	21-2290-001
PROJECT	1002 Riviera Crescent Geotechnical Instrumentation	SURFACE ELEV.	228.00 m
LOCATION	1002 Riviera Crescent	TOC STICK-UP / ELEV.	1.07 m / 229.07 m (Standpipe)
DESCRIPTION	Midbank (toe of upper bank)	TOC STICK-UP / ELEV.	1.07 m / 229.07 m (Inclinometer)
DRILL RIG / HAMMER	Acker Renegade Track Mounted Drill Rig	START DATE	3-15-2021
METHOD(S)	0.0 m to 13.4 m: 125 mm ø SSA	UTM (m)	N 5,521,495.18 E 633,083.6 Zone 14 U



WATER LEVELS	During Drilling/Digging	on 3-15-2021 None Encountered	CONTRACTOR Maple Leaf Drilling Ltd.	INSPECTOR M. ALFARO
	Upon Completion	5.79 m on 3-15-2021		
			APPROVED A. CHAN	DATE 11-4-2022

KGS_LOG_C:\USERS\KGAUTHIER\DRIVE - KGS GROUP\FMS\21-2290-001\1002 RIVIERA_MM.GPJ

CLIENT	TRI-CORE PROJECTS MANITOBA LTD.	PROJECT NO.	21-2290-001
PROJECT	1002 Riviera Crescent Geotechnical Instrumentation	SURFACE ELEV.	226.05 m
LOCATION	1002 Riviera Crescent	TOC STICK-UP / ELEV.	0.98 m / 227.03 m (Standpipe)
DESCRIPTION	Lower bank (downslope of the sink hole)	TOC STICK-UP / ELEV.	0.98 m / 227.04 m (Inclinometer)
DRILL RIG / HAMMER	Acker Renegade Track Mounted Drill Rig	START DATE	3-16-2021
METHOD(S)	0.0 m to 10.7 m: 125 mm ϕ SSA	UTM (m)	N 5,521,485 E 633,103.73 Zone 14 U






KGS_LOG_C:\USERS\KGAUTHIER\DRIVE - KGS GROUP\FMS\21-2290-001\1002 RIVIERA_MMMA.GPJ

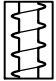
WATER LEVELS	▽ During Drilling/Digging	on 3-16-2021 None Encountered	CONTRACTOR Maple Leaf Drilling Ltd.	INSPECTOR M. ALFARO
	▼ Upon Completion	on 3-16-2021 Dry		
	None Encountered		APPROVED A. CHAN	DATE 11-4-2022

KEY TO SYMBOLS

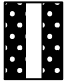
LITHOLOGIC SYMBOLS

-  Clay (CH, high plasticity)
-  Fill (made ground)
-  Silt Till

SAMPLER SYMBOLS

-  Auger Grab

WELL CONSTRUCTION SYMBOLS

-  Slope Incliner (grout)

ABBREVIATIONS

- | | |
|---|---|
| <ul style="list-style-type: none"> LL - Liquid Limit PL - Plastic Limit PI - Plastic Index MC - Moisture Content DD - Dry Density NP - Non-Plastic -200 - Percent Passing No. 200 Sieve TV - Torvane (kPa) PP - Pocket Penetrometer (kPa) PSA - Particle Size Analysis TOC - Top Of Casing | <ul style="list-style-type: none"> PN - Pneumatic Piezometer VW - Vibrating Wire Piezometer PID - Photoionization Detector ppm - Parts Per Million ∇ - Water Level During Drilling ▼ - Water Level Upon Completion of Drilling ∇ - Water Level Remeasured/Static |
|---|---|