

SUBSTRATE LEGEND

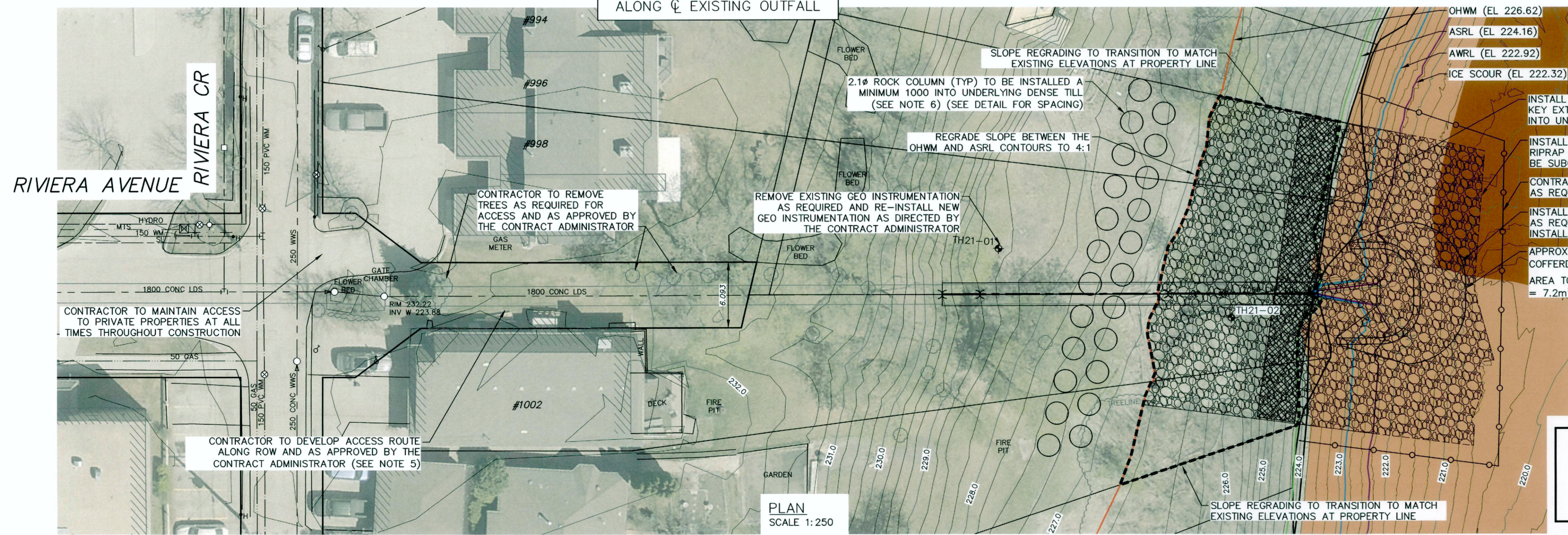
	CLAY WITH GRAVEL/COBBLE
	SILTY CLAY

SUBSTRATE TYPES BELOW ICE SCOUR AFFECTED BY THE PROJECT

EXISTING SUBSTRATE	PERMANENT AREA (m ²)
CLAY WITH GRAVEL/COBBLE	47.0
SILTY CLAY	212.2
TOTAL AREA AFFECTED	259.2

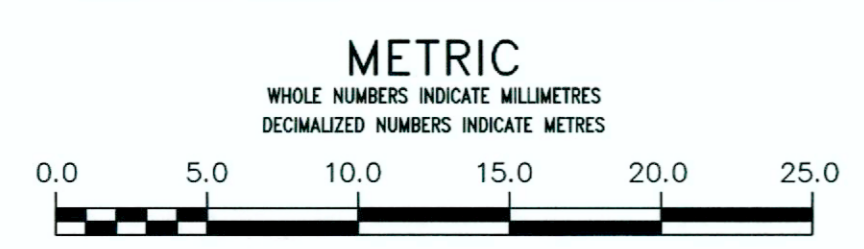
- NOTES:**
- ALL EXCAVATED MATERIAL WITHIN 107.0 OF THE ASRL (AVERAGE SUMMER RIVER LEVEL) MUST BE REMOVED FROM SITE (NO STOCKPILING).
 - CONTRACTOR TO PROTECT EXISTING TREES DURING CONSTRUCTION.
 - CONTRACTOR TO RESTORE SITE, INCLUDING ROAD, CURBS, AND LANDSCAPING FEATURES, TO PRE-CONSTRUCTION CONDITION.
 - CONTRACTOR IS ADVISED THAT TEMPORARY CONSTRUCTION ACCESS AGREEMENTS WITH ADJACENT PROPERTY OWNERS ARE EXPECTED TO BE IN PLACE AT TIME OF CONSTRUCTION. CONTRACTOR TO DEVELOP SUITABLE ACCESS ALONG 6.093 WIDE ROW AND PRIVATE PROPERTIES AS REQUIRED TO FACILITATE CONSTRUCTION, HOWEVER SHALL MAKE EVERY REASONABLE EFFORT TO MINIMIZE CONSTRUCTION FOOTPRINT AND SURFACE DAMAGE. CONTRACTOR TO PROVIDE ACCESS PLAN AND EQUIPMENT LIST TO CONTRACT ADMINISTRATOR FOR REVIEW AND APPROVAL PRIOR TO STARTING CONSTRUCTION.
 - AN ALLOWANCE FOR BUILDING INSPECTIONS AND INSTALLATION OF VIBRATION MONITORS IS INCLUDED IN THE CONTRACT (REFERENCE E35).
 - CONTRACTOR SHALL VIBROCOMPACT ROCKFILL COLUMNS AND SHEAR KEY STARTING IN THE MIDDLE/AT PIPE ALIGNMENT AND WORK TOWARDS NORTH EXTENT. COLUMNS AND SHEAR KEY SOUTH OF THE PIPE ALIGNMENT SHALL BE VIBROCOMPACTED FOLLOWING THE NORTH HALF COMPACTION. VIBROCOMPACTION OF ROCKFILL COLUMNS AND SHEAR KEY SHALL BE COMPLETED IN ADVANCE OF PIPE INSTALLATION WORKS.

NOTE: CHAINAGES SHOWN ARE ALONG ϕ EXISTING OUTFALL



ENGINEERS GEOSCIENTISTS MANITOBA
 Certificate of Authorization
 KGS Group
 No. 245

FOR INDEX PAGE SEE DWG
 1-03030-D0011-001



WARNING
 IF POWER EQUIPMENT OR EXPLOSIVES ARE TO BE USED FOR EXCAVATION ON THIS PROJECT THE CONTRACTOR MUST:
 1) NOTIFY THE GAS COMPANY OF THE PROPOSED LOCATION OF EXCAVATION.
 2) TAKE PRECAUTION TO AVOID DAMAGE TO GAS COMPANY INSTALLATIONS.
 SEE PROVINCIAL REGULATION 21072 FOR DETAILS

LOCATION APPROVED UNDERGROUND STRUCTURES
 SUPV. U/G STRUCTURES COMMITTEE DATE
 NOTE:
 LOCATION OF UNDERGROUND STRUCTURES AS SHOWN ARE BASED ON THE BEST INFORMATION AVAILABLE BUT NO GUARANTEE IS GIVEN THAT ALL EXISTING UTILITIES ARE SHOWN OR THAT THE GIVEN LOCATIONS ARE EXACT. CONFIRMATION OF EXISTENCE AND EXACT LOCATION OF ALL SERVICES MUST BE OBTAINED FROM THE INDIVIDUAL UTILITIES BEFORE PROCEEDING WITH CONSTRUCTION.

B.M. ELEV.

NO.	ISSUED FOR TENDER	DATE	BY
0	ISSUED FOR TENDER	2022 11 07	AKC
	REVISIONS	DATE	BY

KGS GROUP

DESIGNED BY NGV CHECKED BY AKC
 DRAWN BY GEL APPROVED BY AKC
 SCALE: HORIZONTAL 1:250 VERTICAL 1:50
 DATE 2022 11 08
 RELEASED FOR CONSTRUCTION

ENGINEER'S SEAL
 CONSULTANT DRAWING NUMBER
 1-03030-C0064-001

THE CITY OF WINNIPEG
 WATER AND WASTE DEPARTMENT
 ENGINEERING DIVISION

RIVERA CRESCENT OUTFALL REHABILITATION
 RIVERA CRESCENT OUTFALL
 GEOTECHNICAL PLAN AND PROFILE
 S-MA70007648

SHEET 4 OF 6
 CITY DRAWING NUMBER
 1-03030-C0064-001