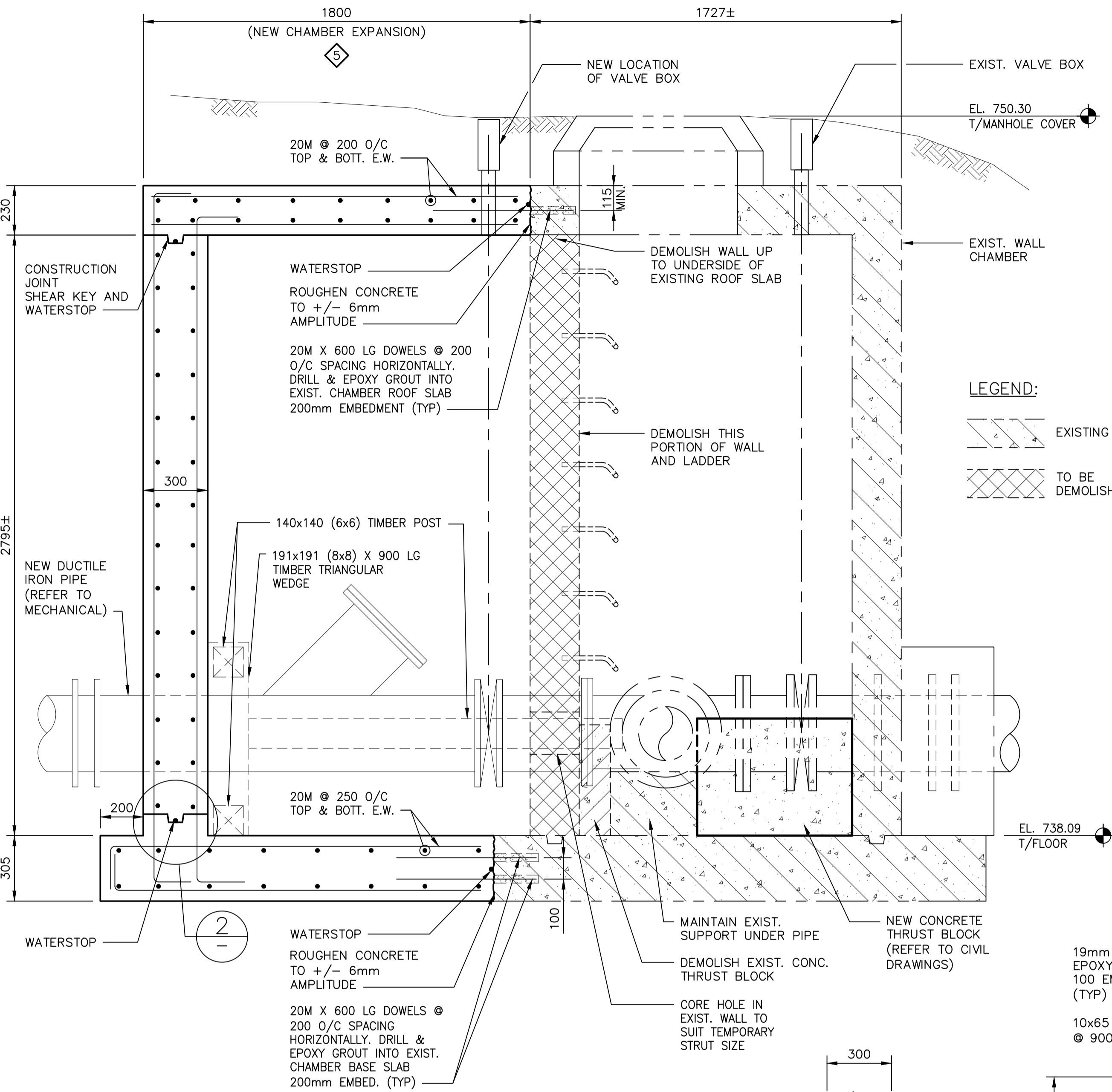


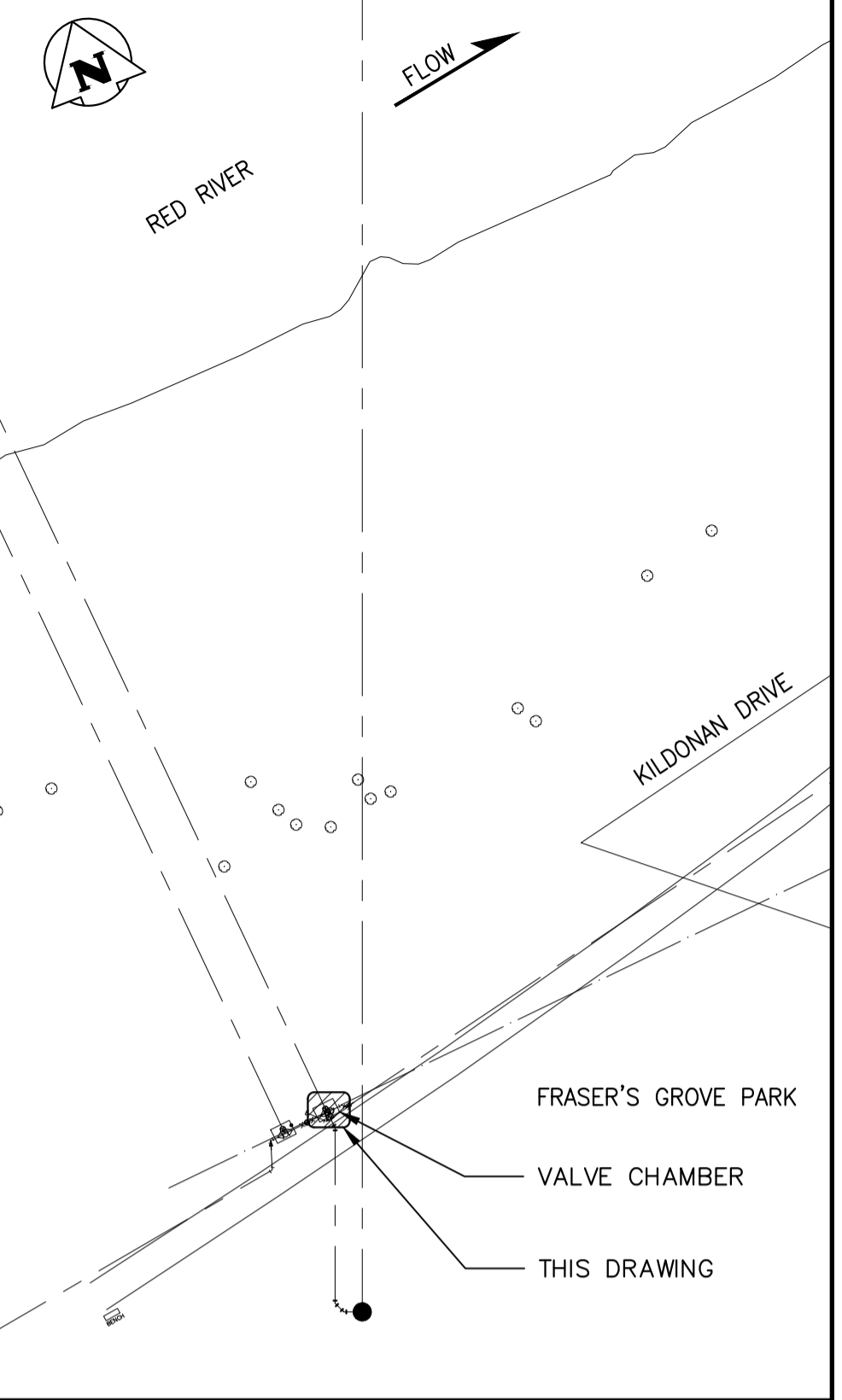
PLAN - SOUTH CHAMBER EXPANSION

SCALE: 1:15



SECTION A-A

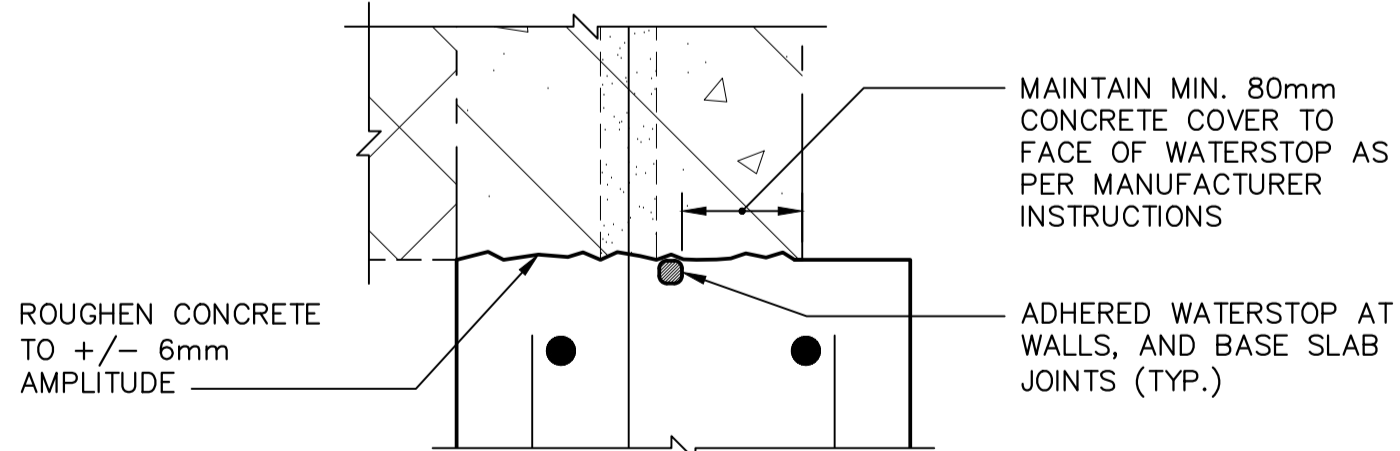
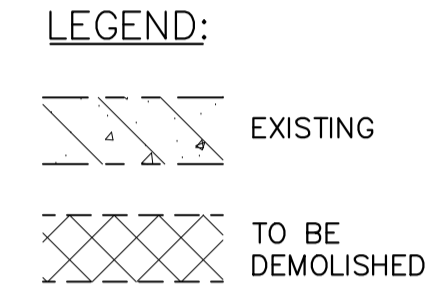
SCALE: 1:15



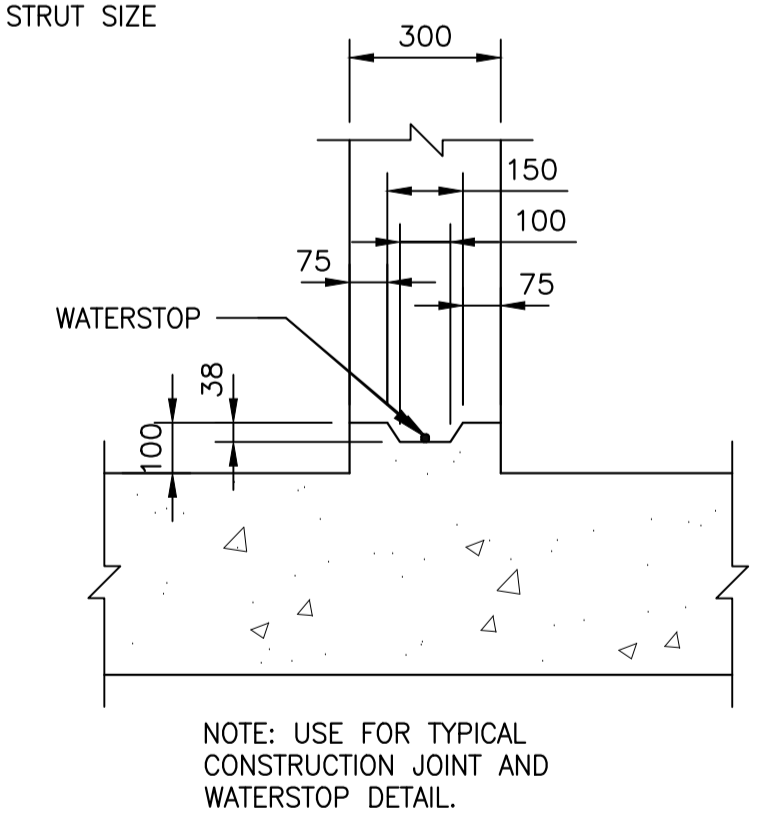
KEYPLAN  
N.T.S.

CONSTRUCTION SEQUENCE:

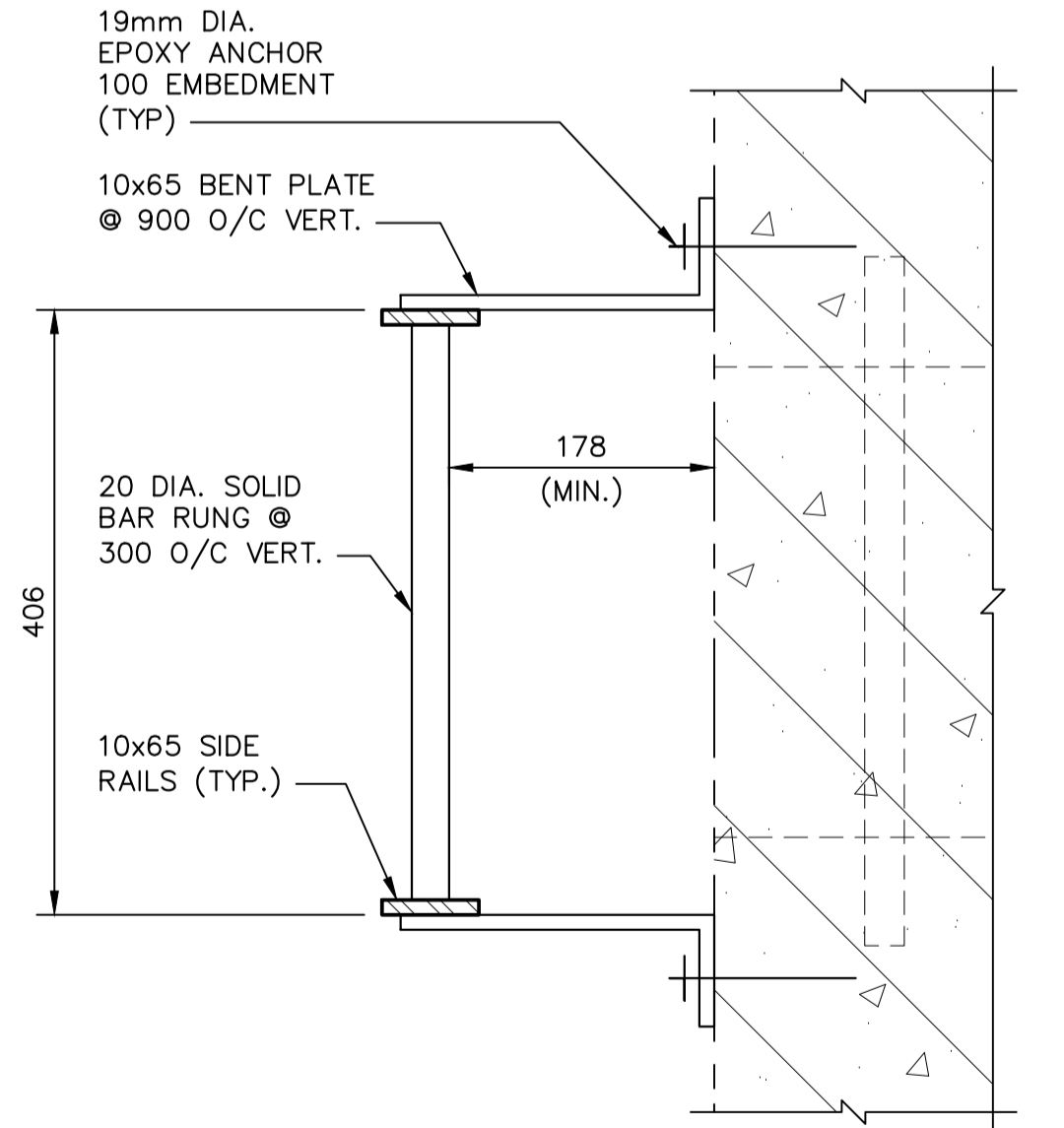
- 1 EXCAVATE, SHORE AND INSTALL NEW CHAMBER EXPANSION BASE SLAB AND WALLS.
- 2 CORE HOLES IN THE EXISTING CHAMBER WALL TO SUIT TEMPORARY STRUT SIZE. INSTALL TEMPORARY COMPRESSION STRUTS.
- 3 DEMOLISH EXISTING CHAMBER WALL.
- 4 DEMOLISH EXISTING PORTION OF PIPE AND INSTALL NEW CONCRETE THRUST BLOCK.
- 5 INSTALL NEW CHAMBER EXPANSION ROOF.



1  
SCALE: 1:5



2  
SCALE: 1:15



3  
SCALE: 1:5

NO.	DRAWING NUMBER	REFERENCE DRAWING TITLE

REFERENCE DRAWINGS

**ENGINEERS  
GEOSCIENTISTS  
MANITOBA**

Certificate of Authorization  
**KGS Group**  
No. 245

NO.	ISSUED FOR TENDER	REVISIONS	DATE	BY
0	ISSUED FOR TENDER		2023 03 14	JW

**KGS GROUP**

DESIGNED BY: J. WALTER  
DRAWN BY: F. VALENCIA  
SCALE: AS SHOWN

CHECKED BY: [Signature]  
APPROVED BY: JMW  
RELEASED FOR CONSTRUCTION: [Signature]

DATE: 22 06 13

ENGINEER'S SEAL

CONSULTANT DRAWING NUMBER  
22-0107-021\_S02

**THE CITY OF WINNIPEG**  
WATER AND WASTE DEPARTMENT  
ENGINEERING DIVISION

NEWTON FORCEMAIN RIVER CROSSING  
SOUTH CHAMBER EXPANSION

PLAN, SECTION AND DETAILS

CITY DRAWING NUMBER 1-0221S-S0004-001  
SHEET 1 OF 1