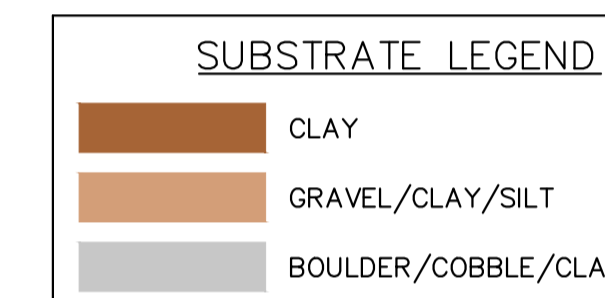


PIPE OUTLET
DATE: 2022-11

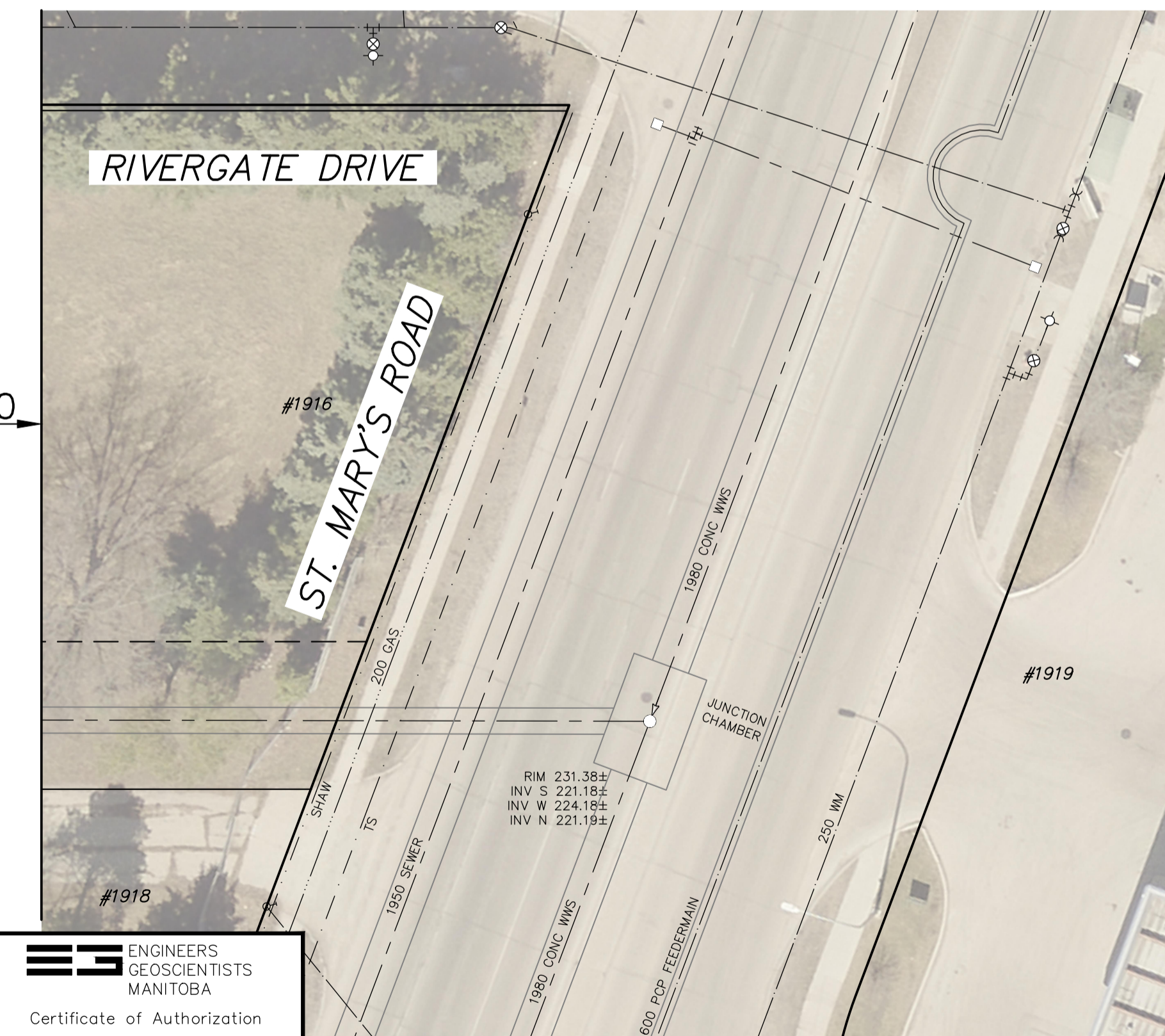
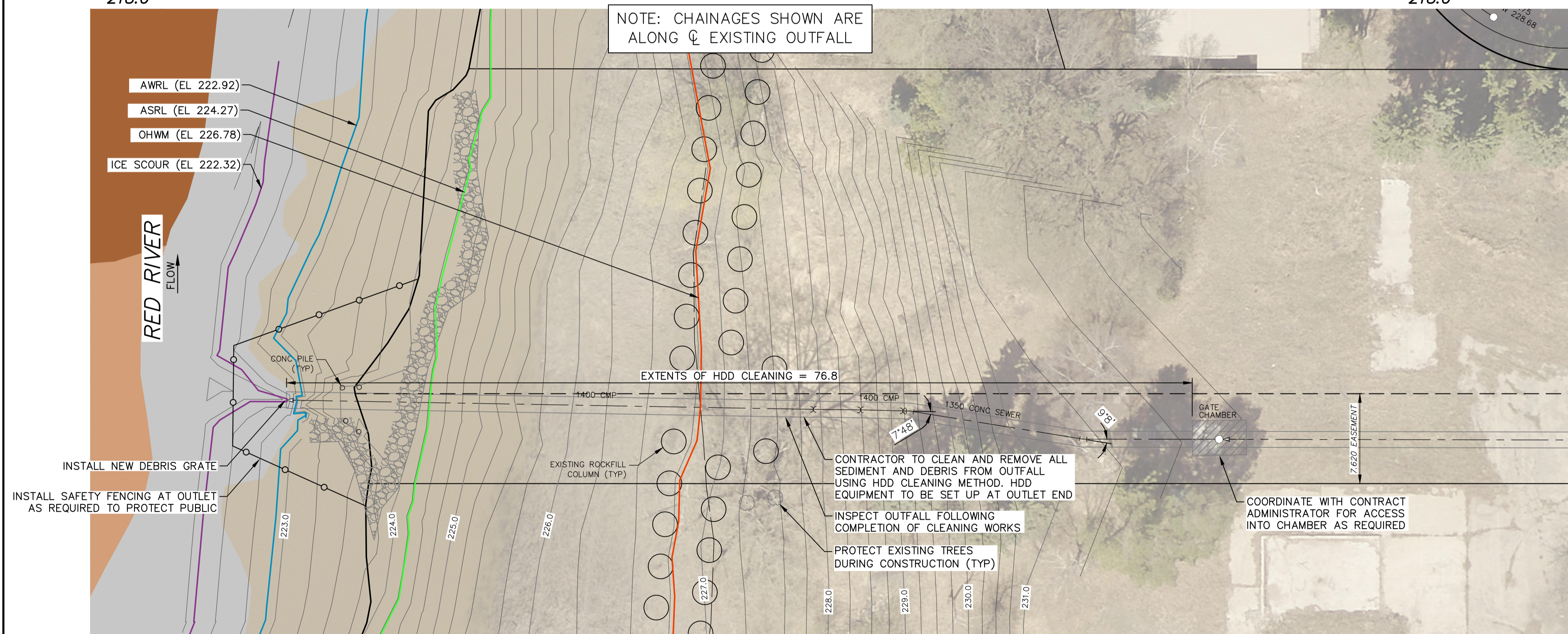


INSIDE CHAMBER LOOKING DOWNSTREAM INTO OUTFALL
DATE: 2022-11



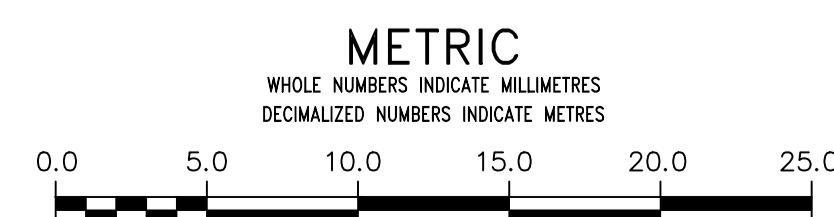
NOTES:

1. ALL EXCAVATED MATERIAL WITHIN 107.0 OF THE ASRL MUST BE REMOVED FROM SITE (NO STOCKPILING).
2. CONSTRUCT TEMPORARY CLAY COFFERDAM AT RIVER AS REQUIRED (SEE DWG 1-03030-C0075-001)
3. PERMITS AS REQUIRED FOR CONSTRUCTION OF TEMPORARY ACCESS ARE THE RESPONSIBILITY OF THE CONTRACTOR.
4. ALL MATERIALS, INCLUDING TEMPORARY MATERIAL PLACED TO CONSTRUCT EQUIPMENT PADS AND ACCESS RAMPS, MUST BE REMOVED FROM SITE FOLLOWING COMPLETION OF WORKS.
5. REFERENCE APPENDIX A FOR EXISTING OUTFALL CHAMBER AND LIFT STATION RECORD DRAWINGS.
6. CONTRACTOR IS ADVISED THAT TEMPORARY CONSTRUCTION ACCESS AGREEMENTS WITH ADJACENT PRIVATE PROPERTY OWNER(S) ARE EXPECTED TO BE IN PLACE AT TIME OF CONSTRUCTION. CONTRACTOR TO PROVIDE ACCESS PLAN AND EQUIPMENT LIST TO THE CONTRACT ADMINISTRATOR FOR REVIEW AND APPROVAL PRIOR TO CONSTRUCTION.



ES ENGINEERS
GEOSCIENTISTS
MANITOBA
Certificate of Authorization
KGS Group
No. 245

FOR INDEX PAGE SEE
DWG 1-03030-D0013-001



WARNING
IF POWER EQUIPMENT OR EXPLOSIVES ARE TO BE USED FOR EXCAVATION ON THIS PROJECT THE CONTRACTOR MUST:
1) NOTIFY THE GAS COMPANY OF THE PROPOSED LOCATION OF EXCAVATION.
2) TAKE PRECAUTION TO AVOID DAMAGE TO GAS COMPANY INSTALLATIONS.
SEE PROVINCIAL REGULATION 210/72 FOR DETAILS

LOCATION APPROVED UNDERGROUND STRUCTURES
SUPV. U/G STRUCTURES COMMITTEE DATE
NOTE:
LOCATION OF UNDERGROUND STRUCTURES AS SHOWN ARE BASED ON THE BEST INFORMATION AVAILABLE BUT NO GUARANTEE IS GIVEN THAT ALL EXISTING UTILITIES ARE SHOWN OR THAT THE GIVEN LOCATIONS ARE EXACT. CONFIRMATION OF EXISTENCE AND EXACT LOCATION OF ALL SERVICES MUST BE OBTAINED FROM THE INDIVIDUAL UTILITIES BEFORE PROCEEDING WITH CONSTRUCTION.

B.M.	ELEV.	NO.	REVISIONS	DATE	BY
1			PREVIOUSLY ISSUED FOR TENDER - RBO	2022 12 13	RBO
0			ISSUED FOR TENDER	2022 12 02	RBO

KGS GROUP		DESIGNED BY	NGV	CHECKED BY	RBO
		DRAWN BY	GEL	APPROVED BY	
SCALE:		RELEASSED FOR CONSTRUCTION			
HORIZONTAL		1:250			
VERTICAL		1:50			
DATE	2022 12 13	DATE			

ENGINEER'S SEAL
ORIGINAL DRAWING
SEALED BY:
R.B. OFMAN
2022/12/02
CONSULTANT DRAWING NUMBER
1-03030-C0074-001

THE CITY OF WINNIPEG
WATER AND WASTE DEPARTMENT
ENGINEERING DIVISION
2022 OUTFALL PROGRAM
27 RIVERGATE DRIVE OUTFALL
PLAN AND PROFILE
S-MA70053500
SHEET 10 OF 12
CITY DRAWING NUMBER
1-03030-C0074-001