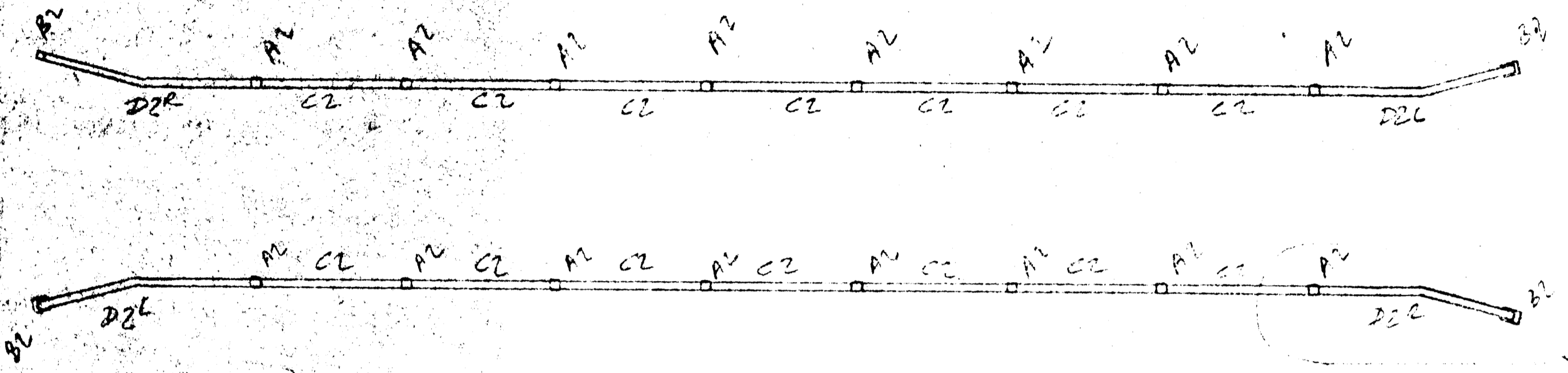
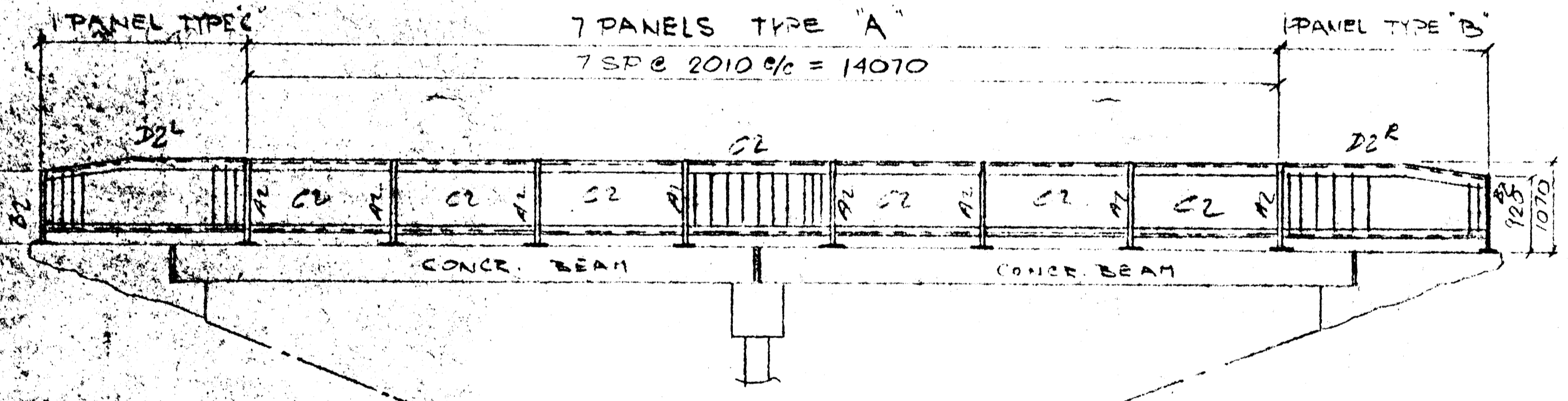


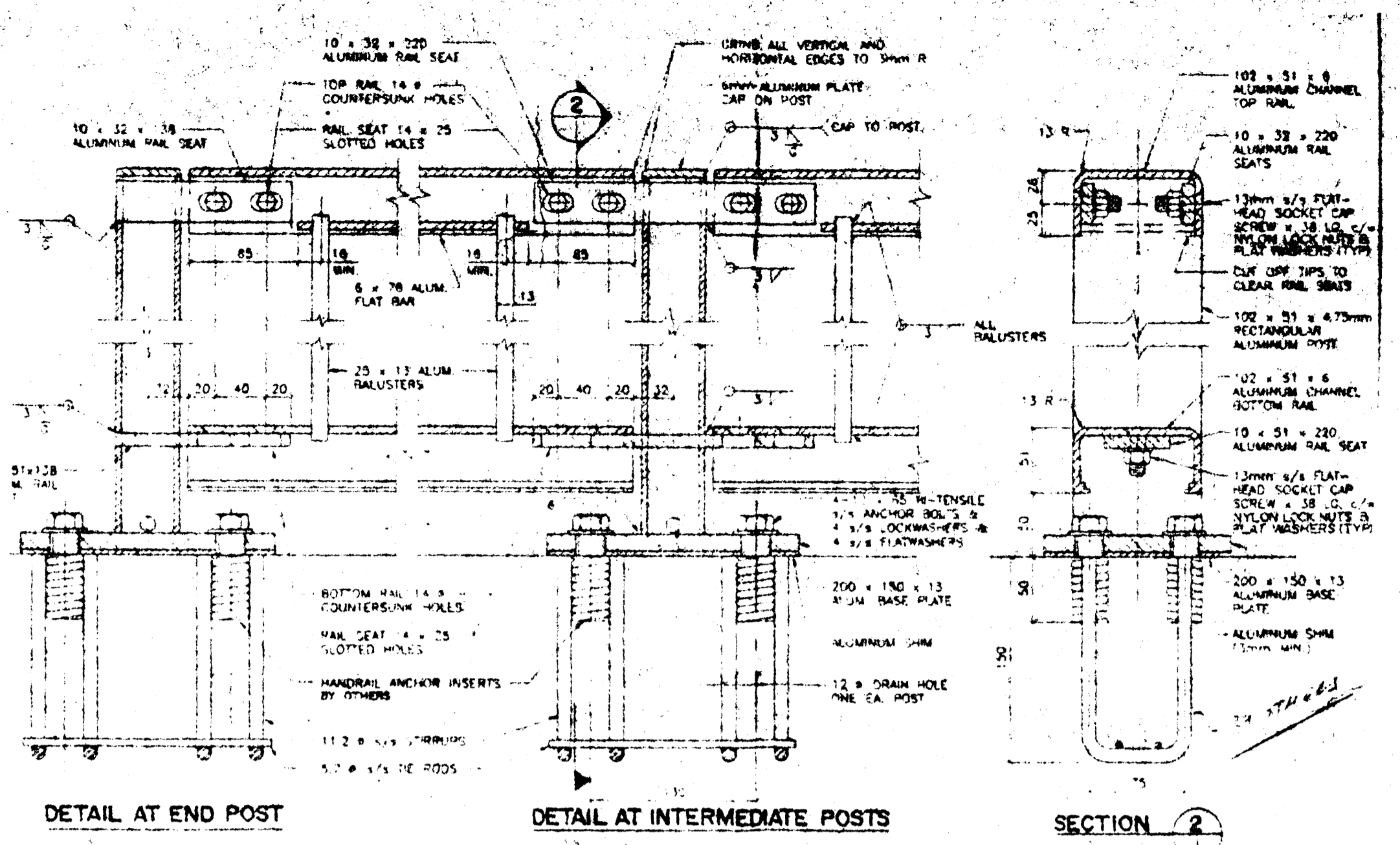
**APPENDIX B**  
**UXBRIDGE ROAD SOUTH PEDESTRIAN**  
**BRIDGE RECORD DRAWINGS**



PLAN  
(3 BRIDGE RAILS)



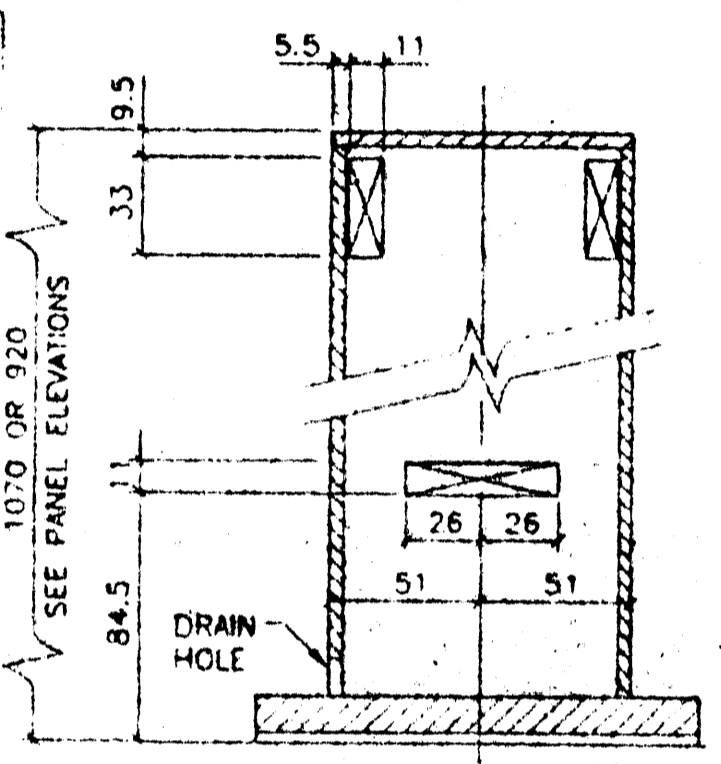
ELEVATION



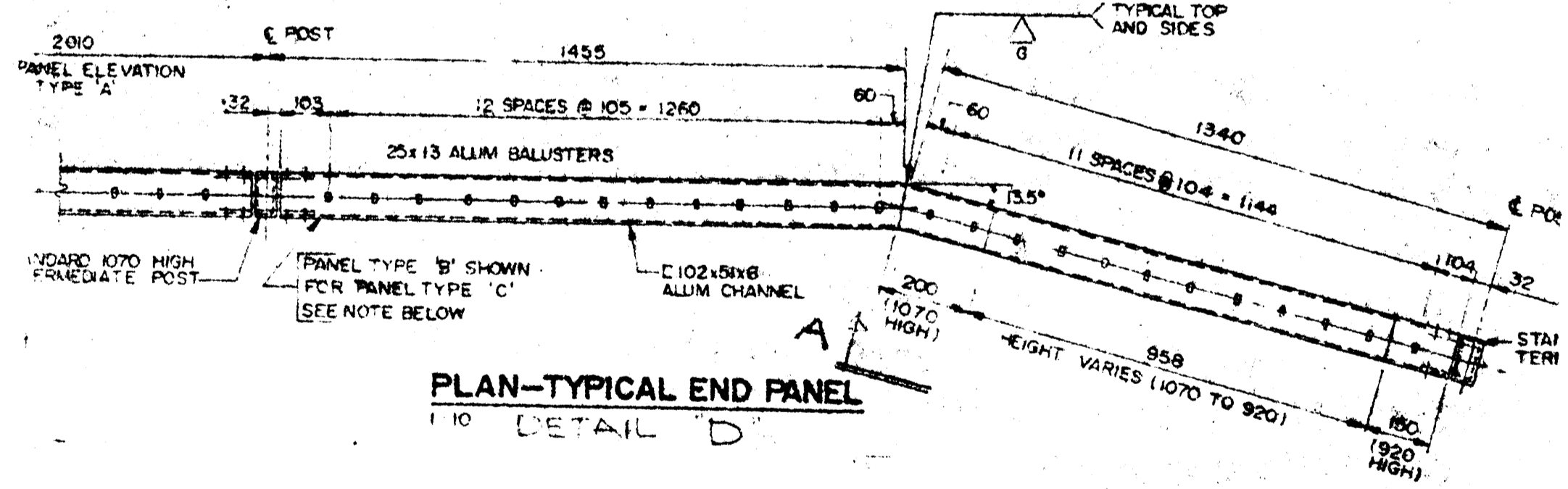
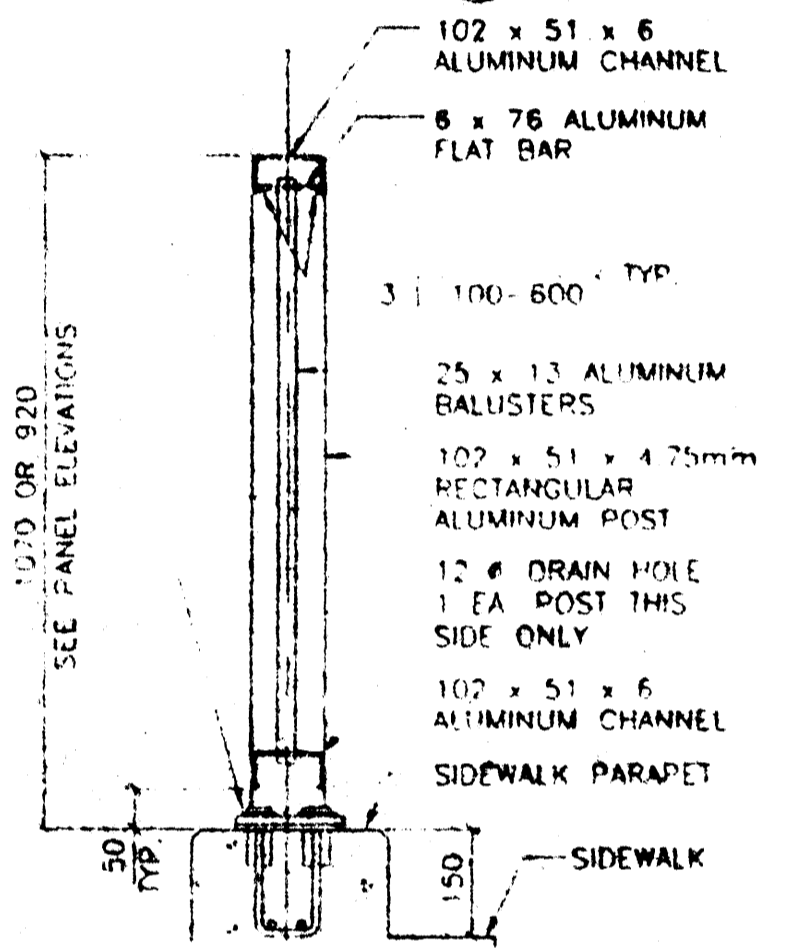
DETAIL AT END POST

DETAIL AT INTERMEDIATE POSTS

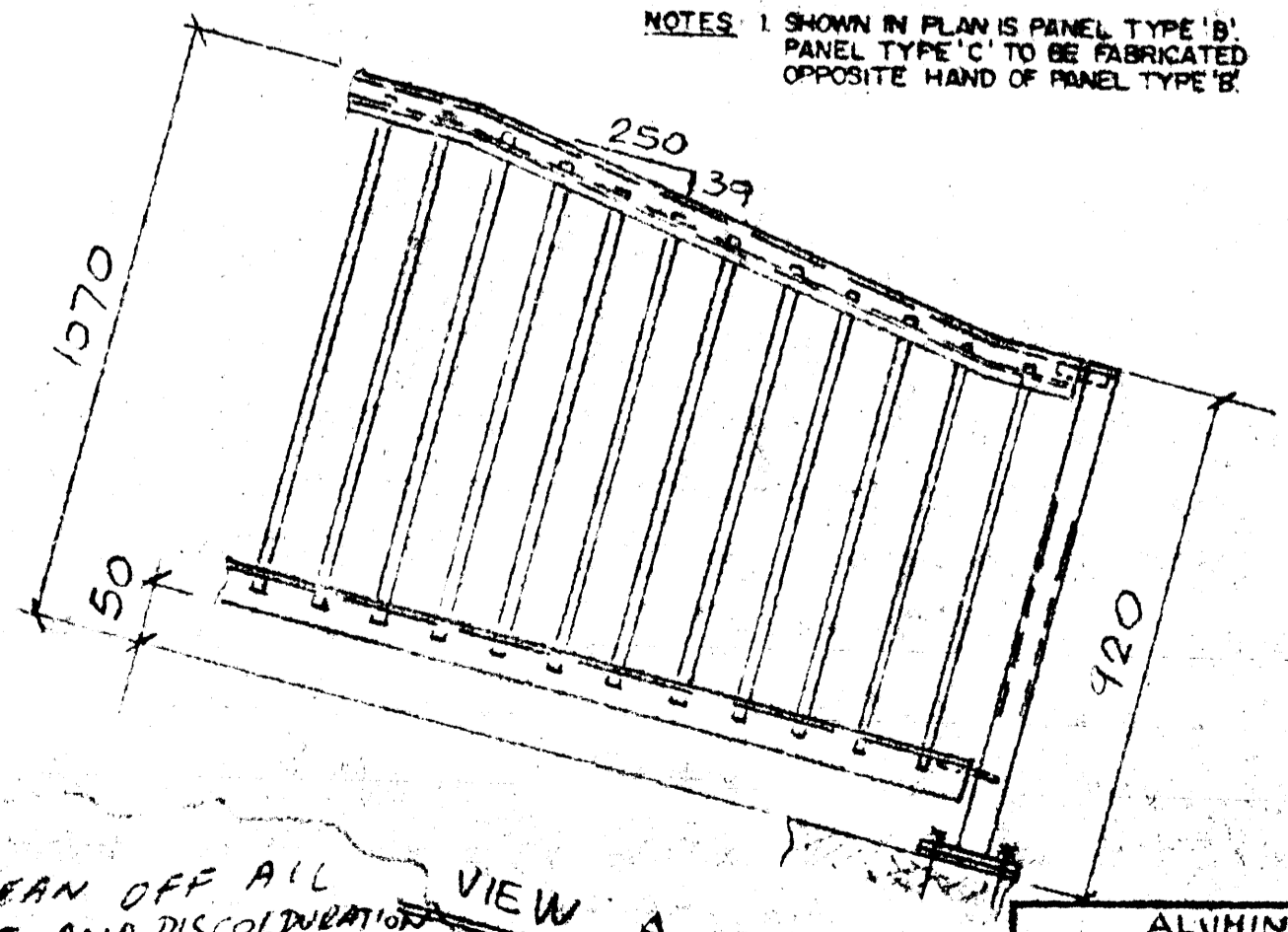
SECTION 2



POST DETAIL  
SHOWING SLOTS FOR RAIL SEATS  
1:2.5



PLAN-TYPICAL END PANEL  
1:10 DETAIL D



FINISH: 1) CLEAN OFF ALL DIRT AND DISCOLORATION  
2) REMOVE ALL MARKS & SCRATCHES  
3) POLISH TOP RAIL

BILL OF MATERIAL						MADE BY	CONTRACT NUMBER	DRWG. NO.
ITEM	MARK	NO.	MATERIAL	FT.	INS.	REMARKS	WEIGHT	
1								
2								
3								
4								
5								
6								
7								
8								
9								
10								
11								
12								
13								
14								
15								
16								
17								
18								
19								
20								
21								
22								
23								
24								
25								
26								
27								
28								
29								
30								
31								
32								
33								
34								
35								
36								
37								
38								
39								
40								
41								
42								
43								
44								
45								
46								
47								
48								
49								
50								
51								
52								
53								
54								
55								
56								
57								
58								
59								
60								
61								
62								
63								
64								

SHOP DRAWING REVIEW  
THIS DRAWING HAS BEEN REVIEWED FOR CONFORMANCE WITH THE GENERAL DESIGN CONCEPT ONLY. SUCH REVIEW SHALL NOT RELIEVE THE CONTRACTOR OF HIS RESPONSIBILITY FOR ERRORS OR OMISSIONS OR OF MEETING THE REQUIREMENTS OF THE CONTRACT DOCUMENTS.

NO COMMENT  
SEE COMMENTS  
AMEND & RESUBMIT

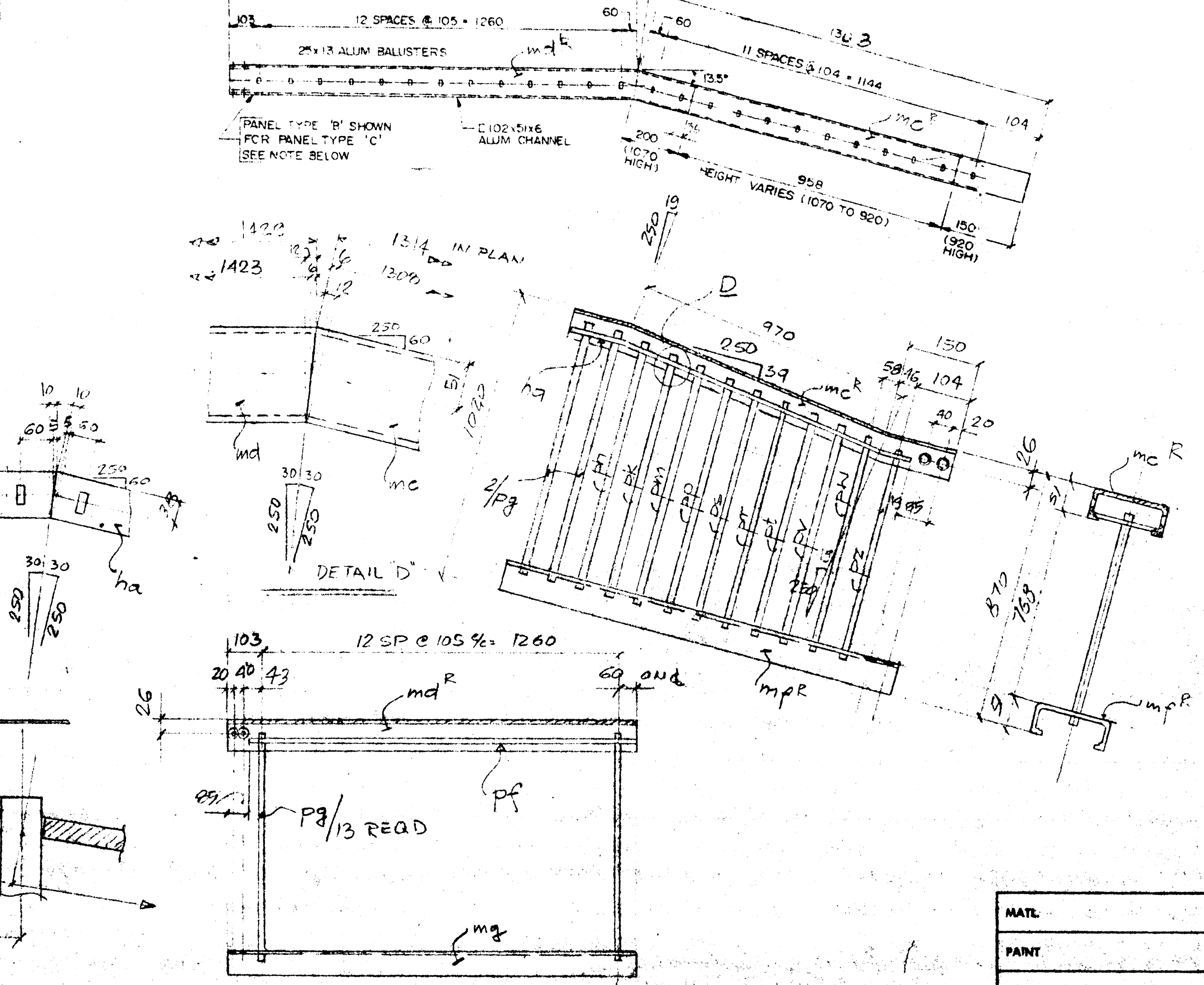
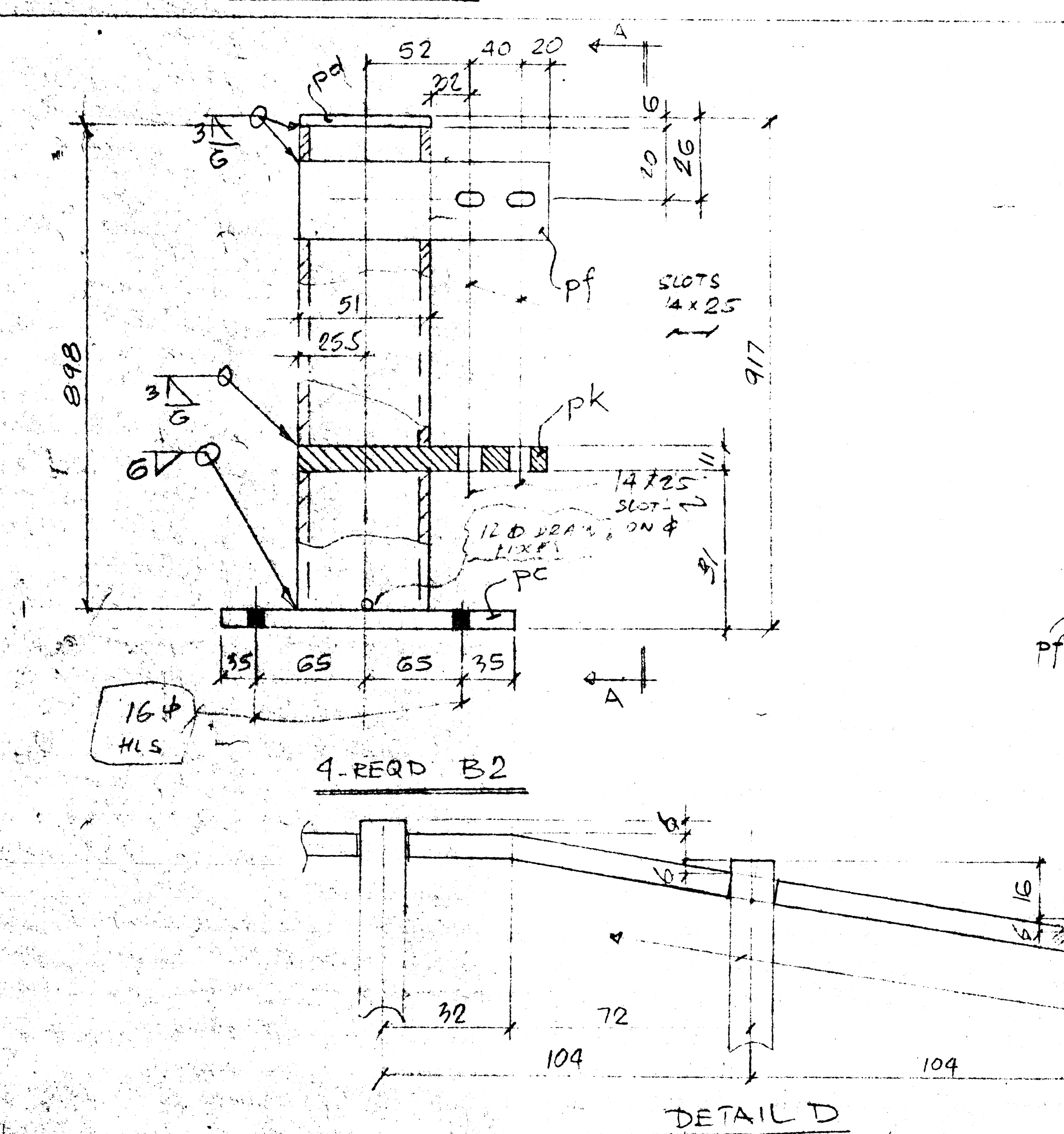
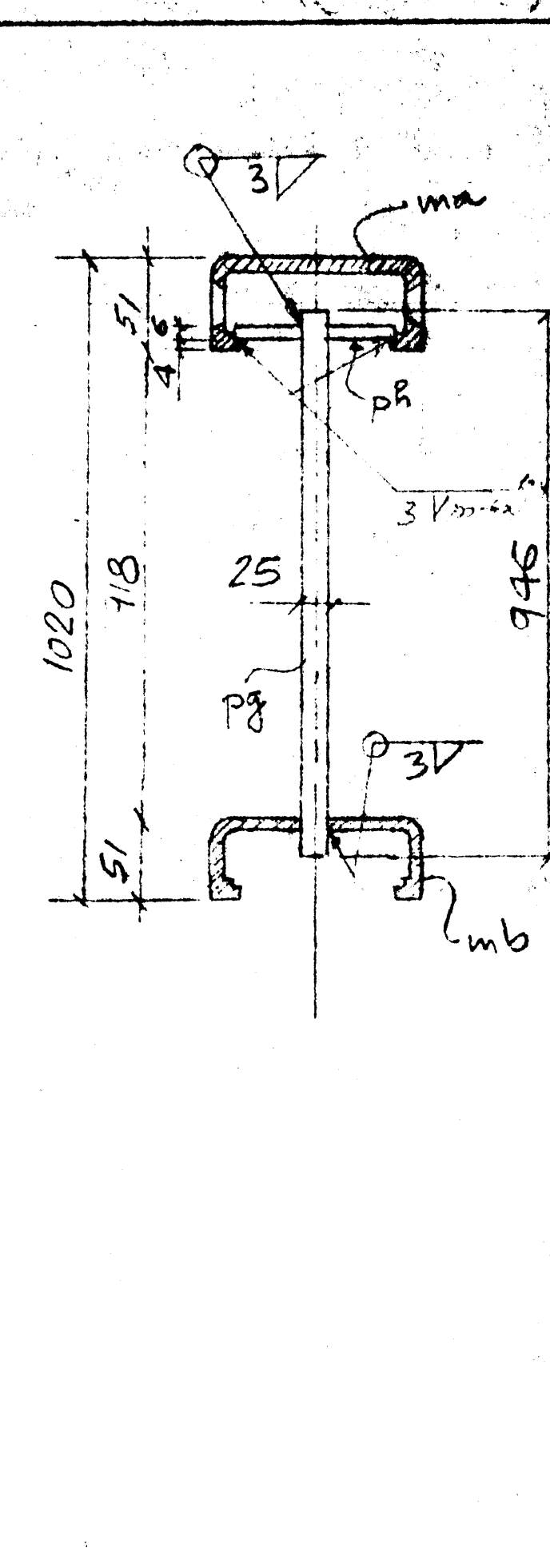
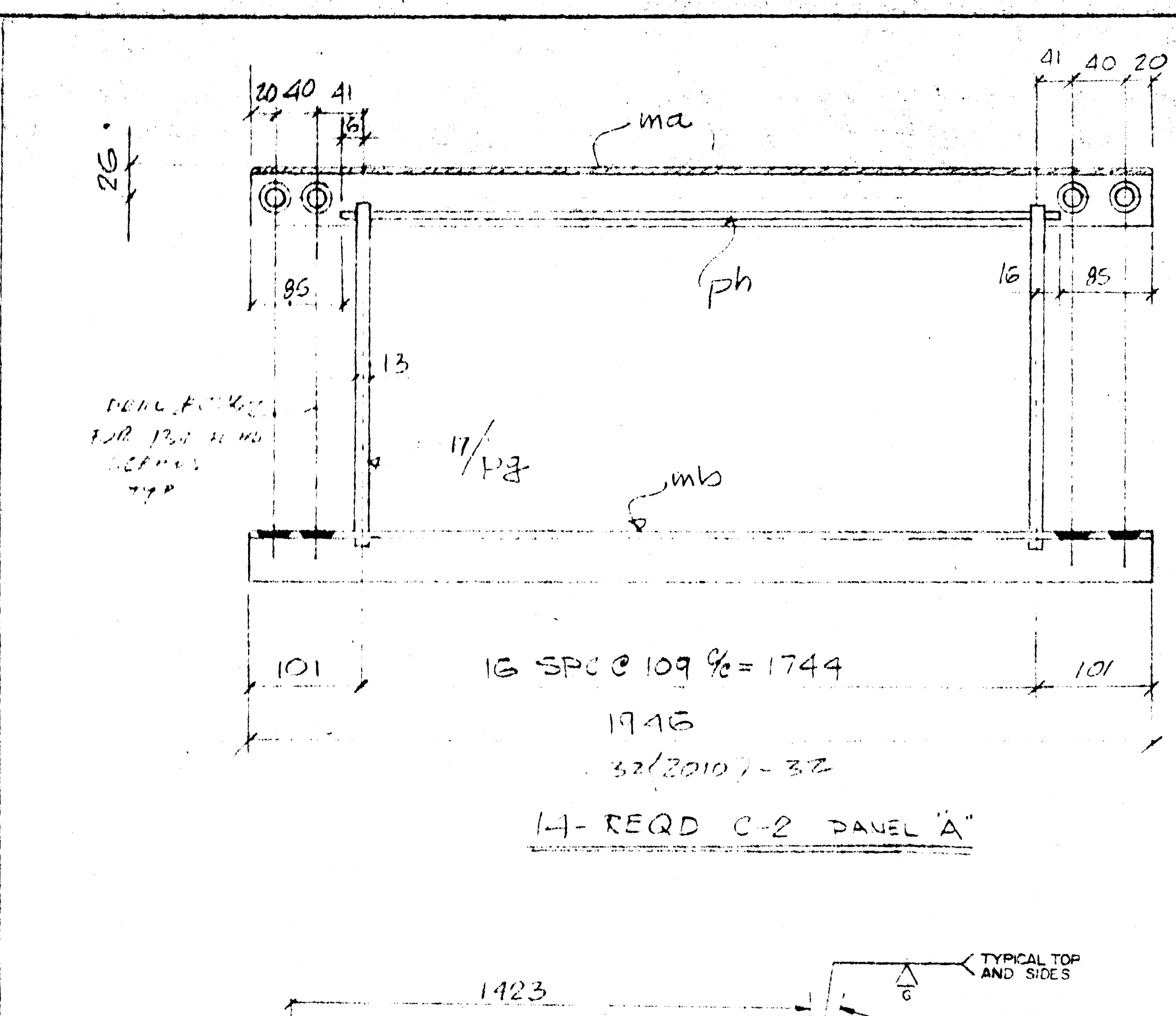
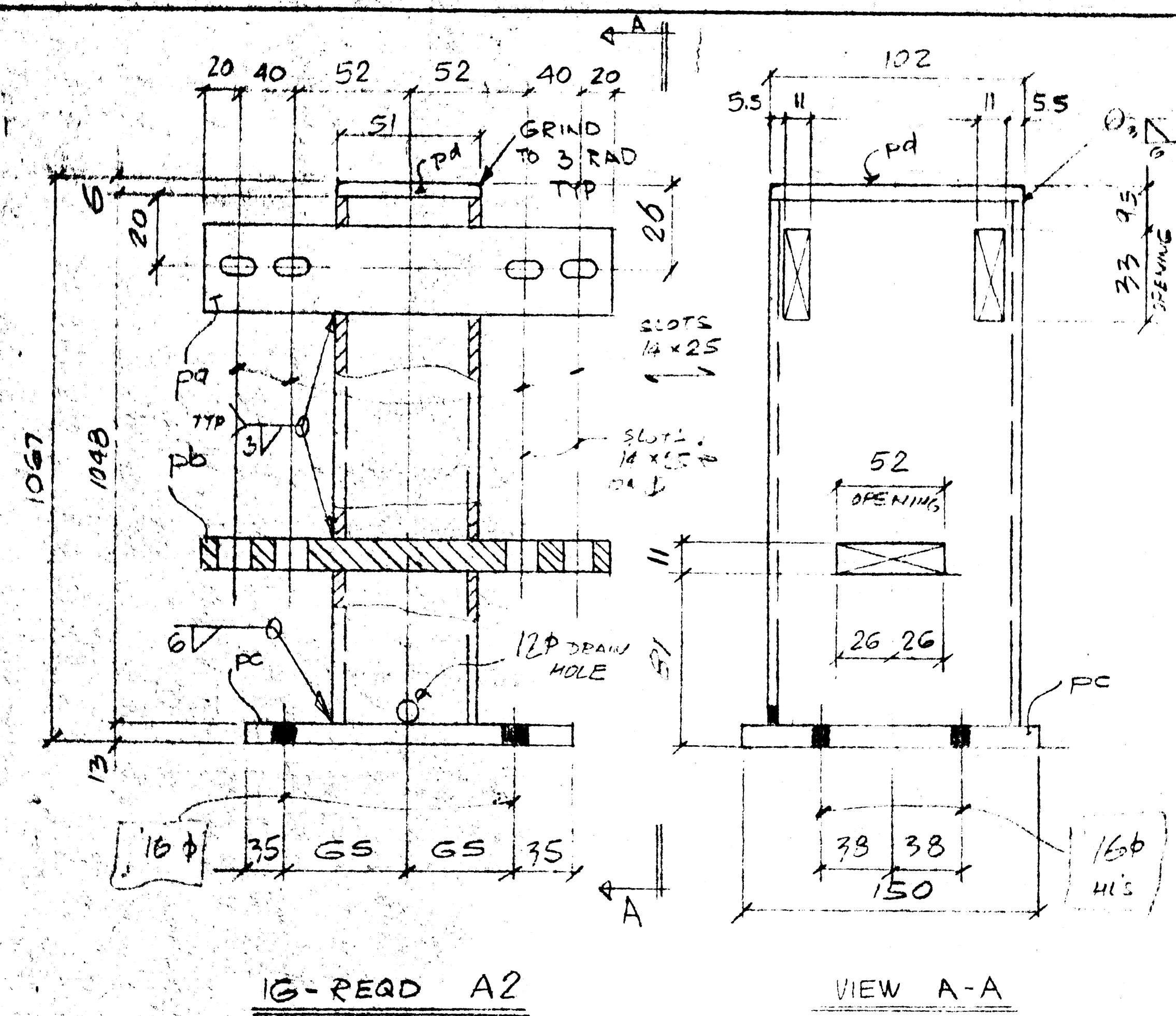
By: [Signature]  
Date: 26/11/92

M. M. DILLON LIMITED  
YORKSHIRE

TO SUIT APPROVAL - 14. NOV 92

CUSTOMER	A. POST ALUMINUM FABRICATORS
STRUCTURE	ALUMINUM PEDESTRIAN HANDRAIL
LOCATION	UXBRIDGE ROAD, WINDSORE
Drawn	PG
Date	NOV 92
Contract	994-72
Checked	
Date	NOV 92
DRAWING NO.	1-02





BILL OF MATERIAL						MADE BY:	CONTRACT NUMBER:	DRW. NO.:
ITEM	MARK	NO.	MATERIAL	QTY	REMARKS	WEIGHT		
1	A2	16	HSS 102x51x5	1		248		
2	pa	32	R 10x32	1		224		
3	pb	16	R 10x51	1		224		
4	pc	16	R 3x150	1		200		
5	pd	16	R 6x57	1		102		
6								
7	B2	4	HSS 102x51x5	1		898		
8								
9	pp	8	R 10x32	1		137		
10	pk	4	R 10x51	1		137		
11	pc	4	R 3x150	1		200		
12	pd	4	R 6x51	1		102		
13								
14								
15								
16	C2	4	PANEL TYPE A	1		946		
17								
18	ma	4	C102x51x6	1		946		
19	mb	4	C102x51x6	1		946		
20								
21	dg	218	BAR 13x25	1		446		
22	ph	4	BAR 76x6	1		176		
23								
24								
25								
26								
27	D2	4	HANDEIL	2	2-R; 2-L	497		
28								
29								
30	mc	4	C102x51x6	1	BENT/BIE	326		
31	md	4		1		429		
32	mf	4		1		314		
33	mg	4		1		429		
34								
35	na	4	BAR 76x6	1	BENT/BIE	240		
36	pb	4	BAR 76x6	1	B.I.E.	344		
37	pa	80	BAR 13x25	1		216		
38	ppa	4		1		929		
39	pk	4		1		319		
40	pm	4		1		303		
41	pp	4		1		887		
42	pb	4		1		871		
43	pc	4		1		871		
44	pd	4		1		879		
45	pe	4		1		879		
46	pf	4		1		807		
47	pg	4		1		807		
48	ph	4		1		800		
49								
50								
51								
52								
53								
54								
55								
56								
57								
58								
59								
60								
61								
62								
63								
64								

NOTE: MULTIPLY X 3 FOR TOTAL ORDER

SHOP DRAWING REVIEW

THE DRAWING HAS BEEN REVIEWED FOR CONFORMANCE WITH THE ORIGINAL DESIGN. CHECK ONLY. SUCH REVIEW SHALL NOT RELIEVE THE CONTRACTOR OF HIS RESPONSIBILITY FOR ERRORS OR OMISSIONS OR OF MEETING THE REQUIREMENTS OF THE CONTRACT DOCUMENTS.

NO COMMENTS

SEE COMMENTS

AMEND & RESUBMIT

M. N. DILLON LIMITED

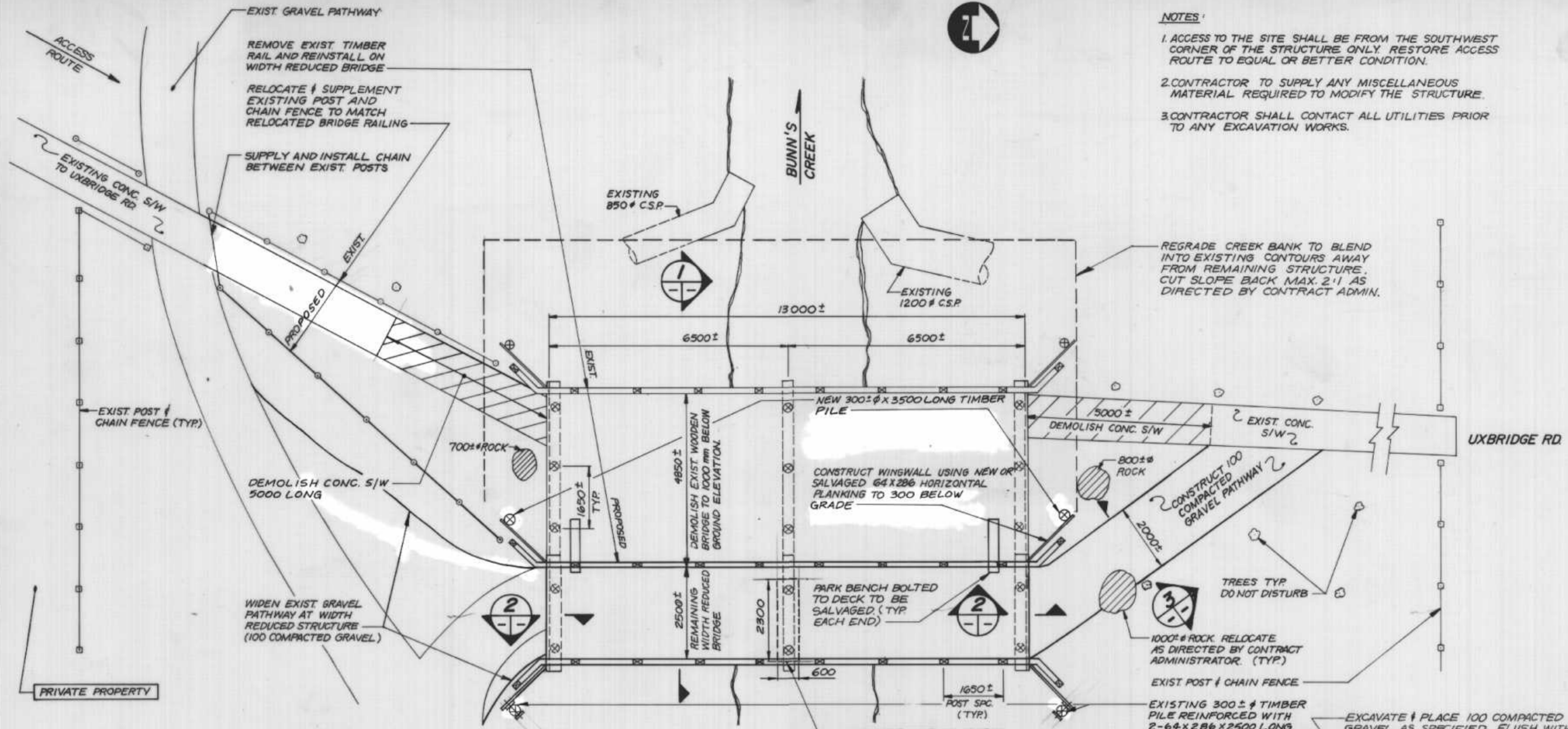
WARRIOR

CUSTOMER	A. POST ALUMINUM FABRICATORS		
STRUCTURE	ALUMINUM PEDESTRIAN HANDBAR		
LOCATION	UXBRIDGE ROAD WINNIPEG		
MATERIAL	DATE	CONTRACT	DRAWING NO.
PAIN	PG	NOV 92	2-OF-2
HOLES	CHK JK	NOV 92	92-92

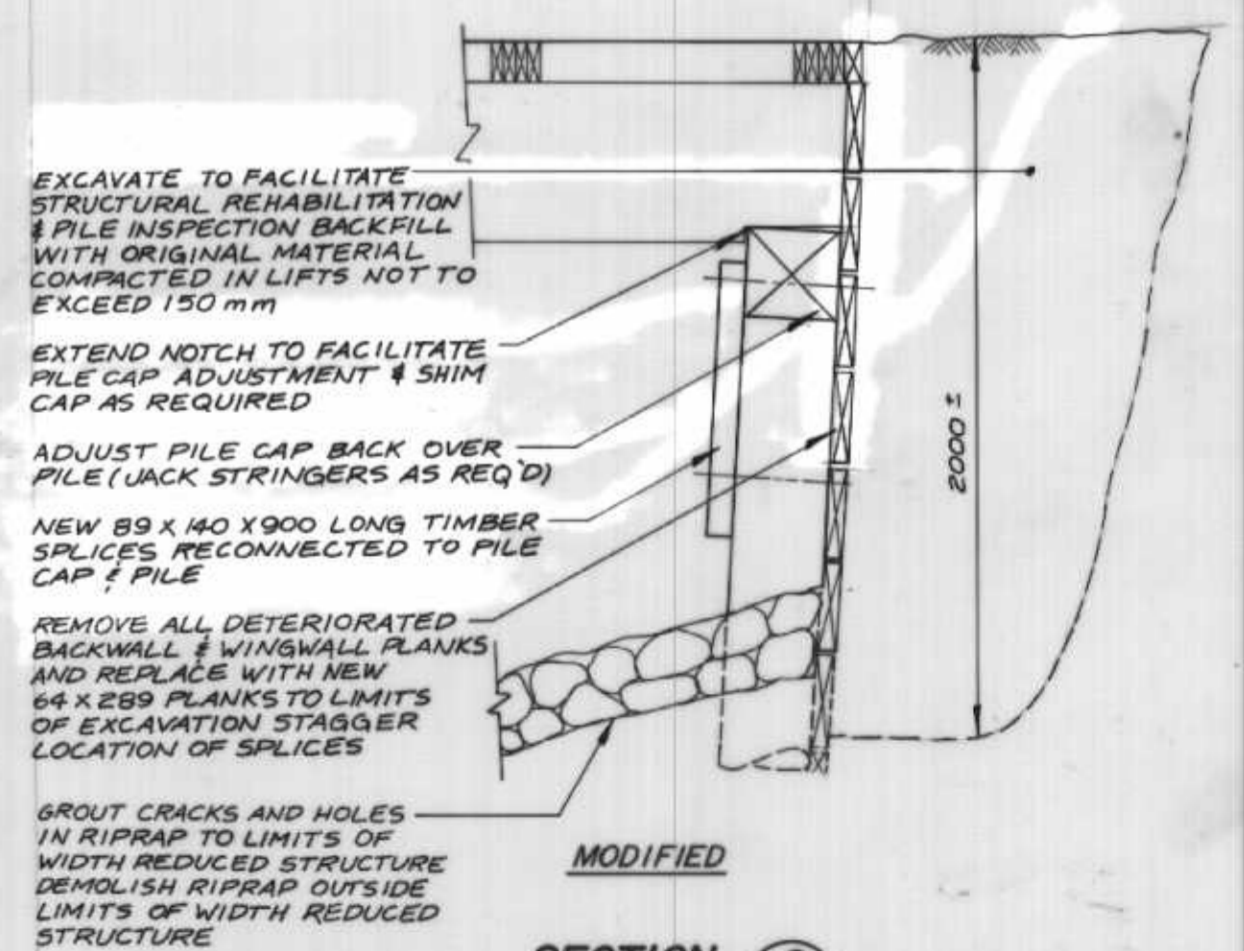
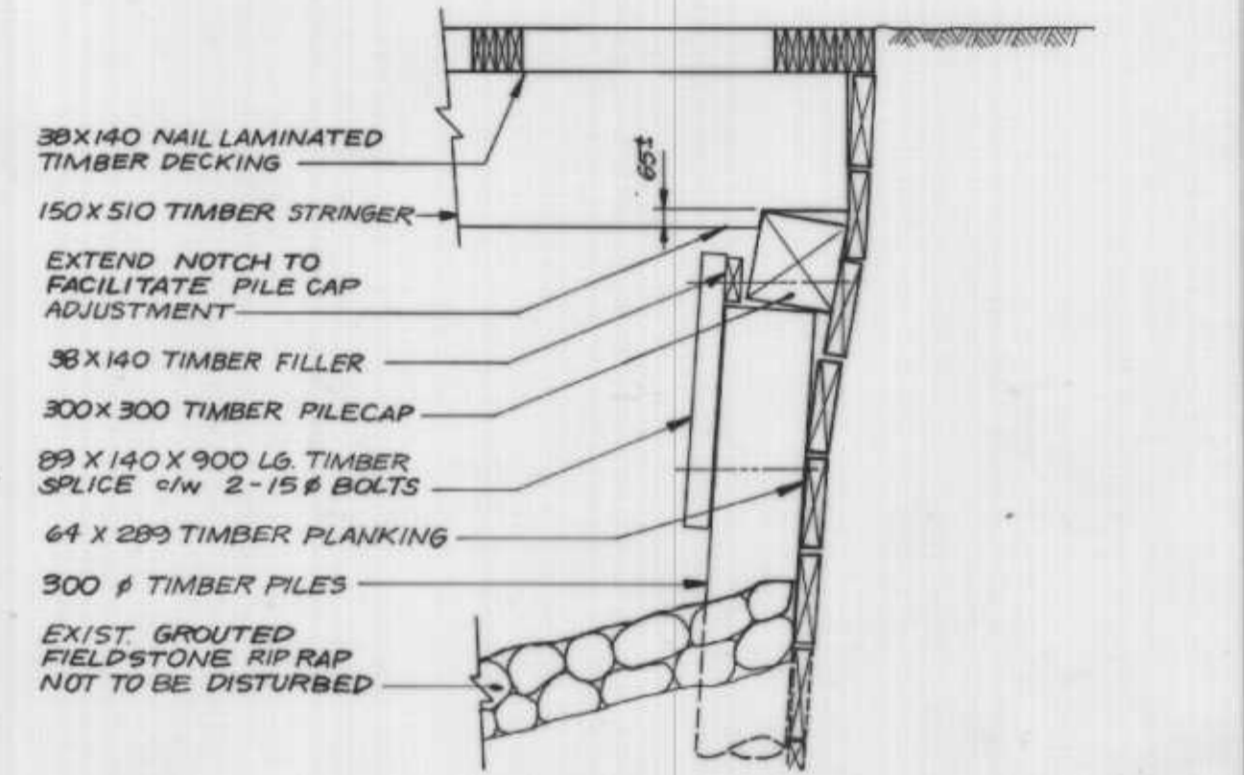
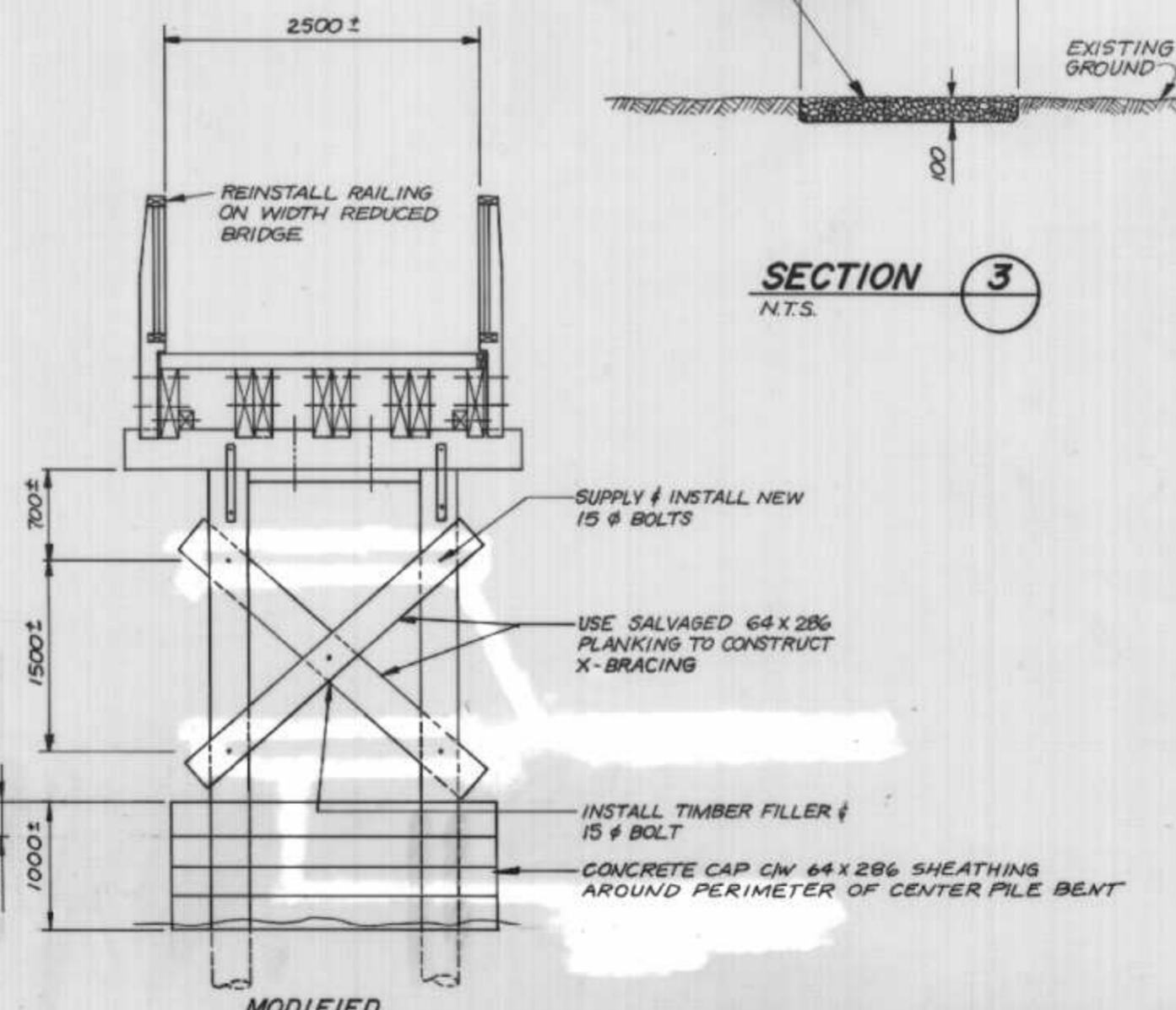
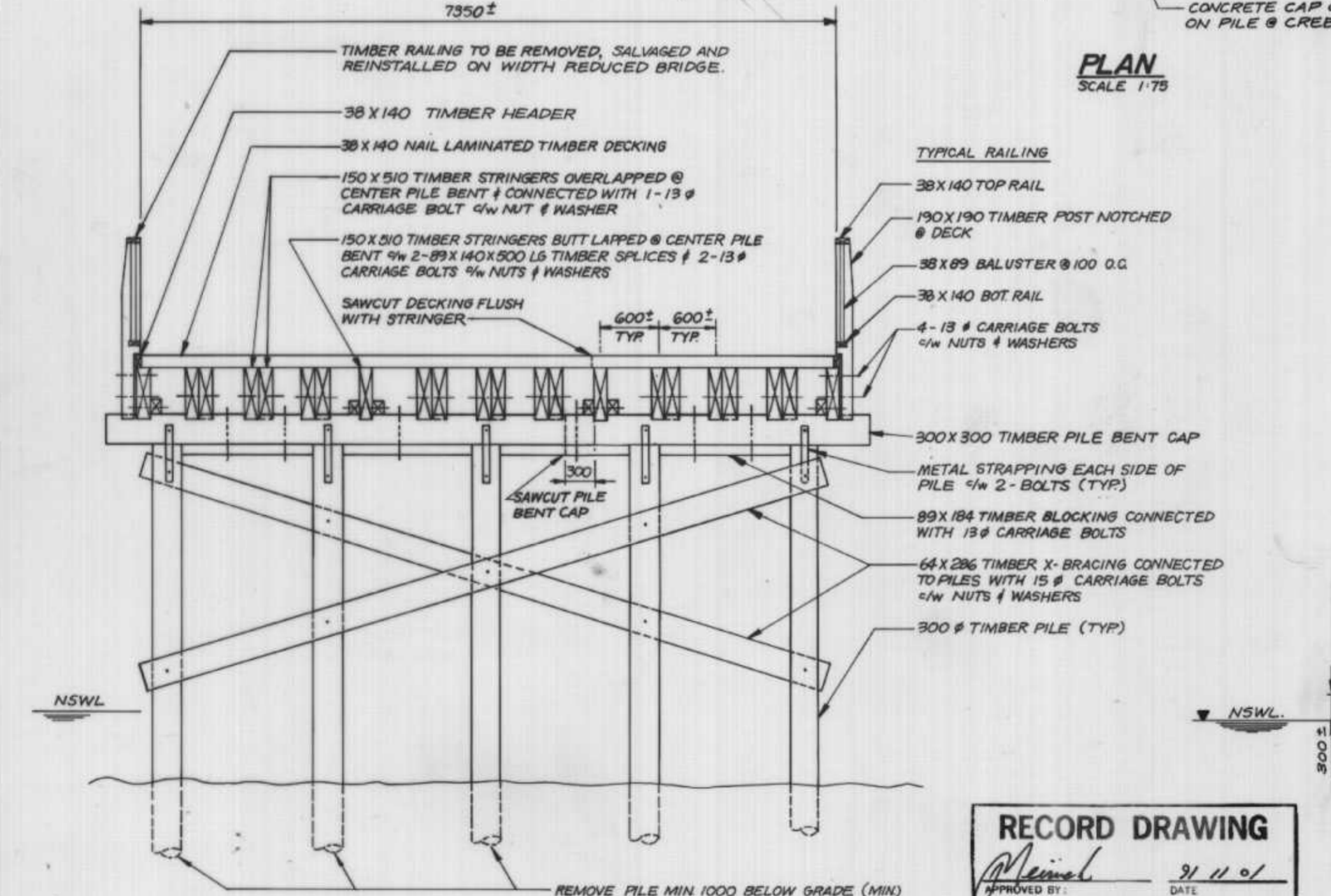
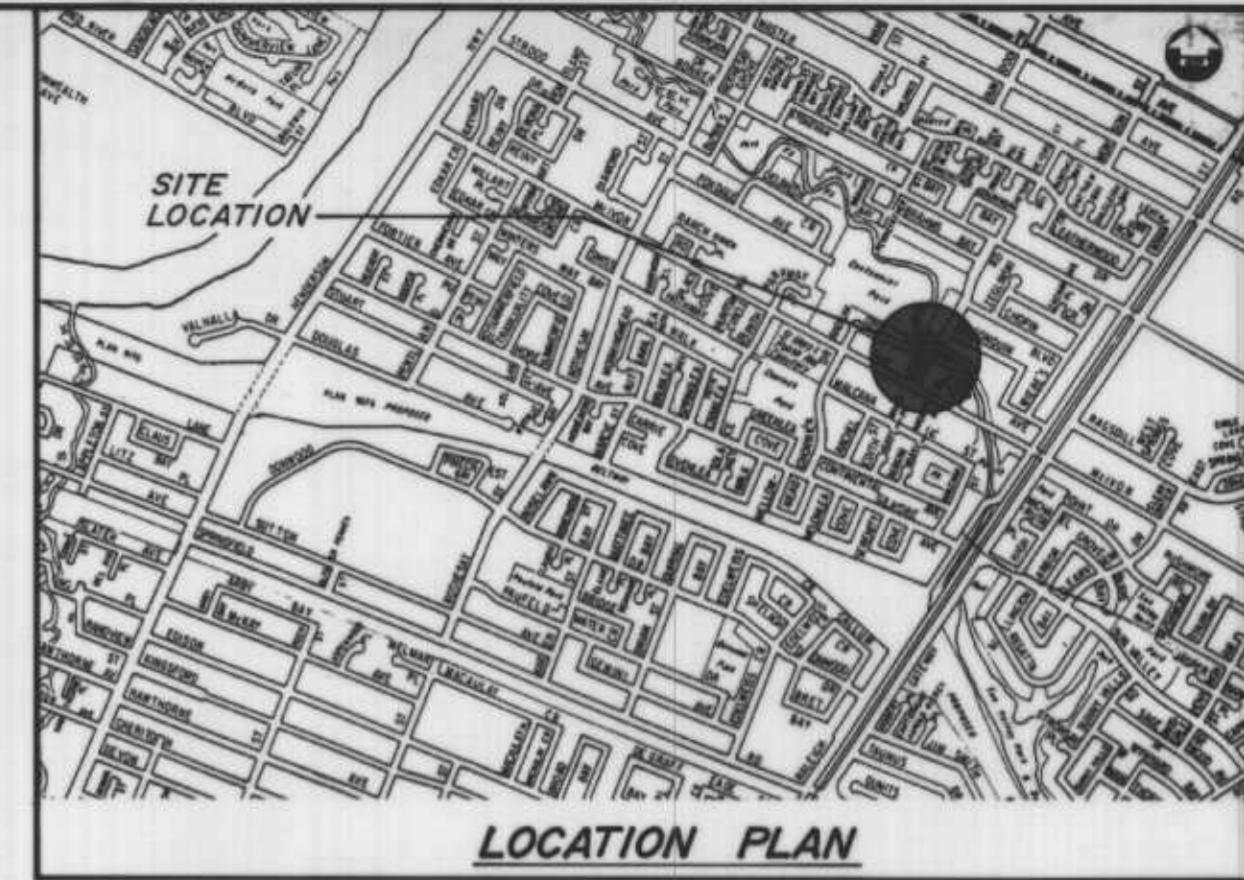








- NOTES:**
1. ACCESS TO THE SITE SHALL BE FROM THE SOUTHWEST CORNER OF THE STRUCTURE. ONLY RESTORE ACCESS ROUTE TO EQUAL OR BETTER CONDITION.
  2. CONTRACTOR TO SUPPLY ANY MISCELLANEOUS MATERIAL REQUIRED TO MODIFY THE STRUCTURE.
  3. CONTRACTOR SHALL CONTACT ALL UTILITIES PRIOR TO ANY EXCAVATION WORKS.



**RECORD DRAWING**  
APPROVED BY: [Signature] DATE: 9/11/01

**SECTION 1**  
SCALE 1:40

B.M. ELEV.					
<b>DILLON</b> Consulting Engineers - Planners Environmental Scientists					
DESIGNED BY	BAN.	CHECKED BY	BAN.		
DRAWN BY	L.G.	APPROVED BY	[Signature]		
HOR. SCALE	AS SHOWN	AUTHORIZED BY	[Signature]		
VERTICAL		DATE	9/6/07		
NO. REVISIONS		DATE	JUNE 1999		



**THE CITY OF WINNIPEG**  
WORKS AND OPERATIONS DIVISION  
STREETS AND TRANSPORTATION DEPARTMENT

**1991 BRIDGE MAINTENANCE**  
UXBRIDGE RD. PEDESTRIAN BRIDGE

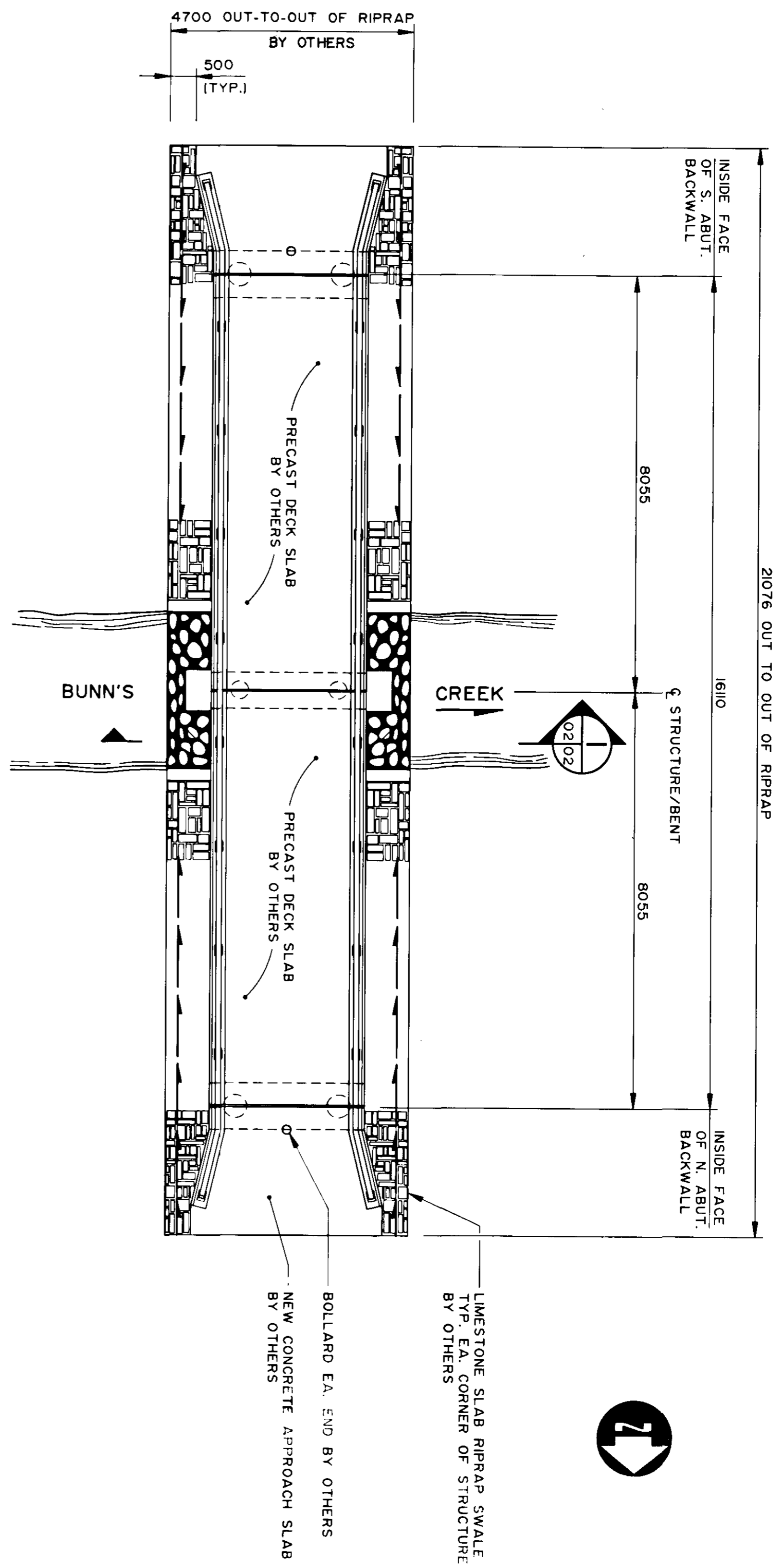
PARTIAL DEMOLITION, STRUCTURAL MODIFICATION AND RELATED SITE WORKS

CITY DRAWING NUMBER: B161-91-01  
SHEET 1 OF 1

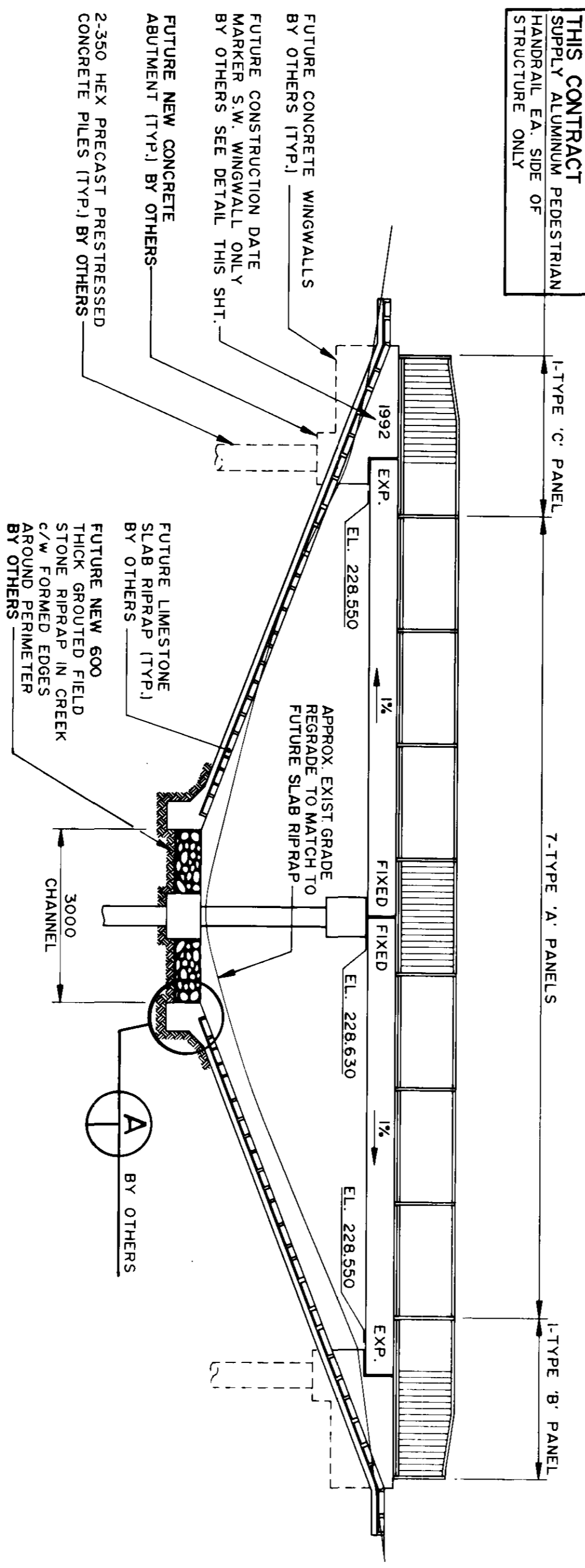
**B-5888**



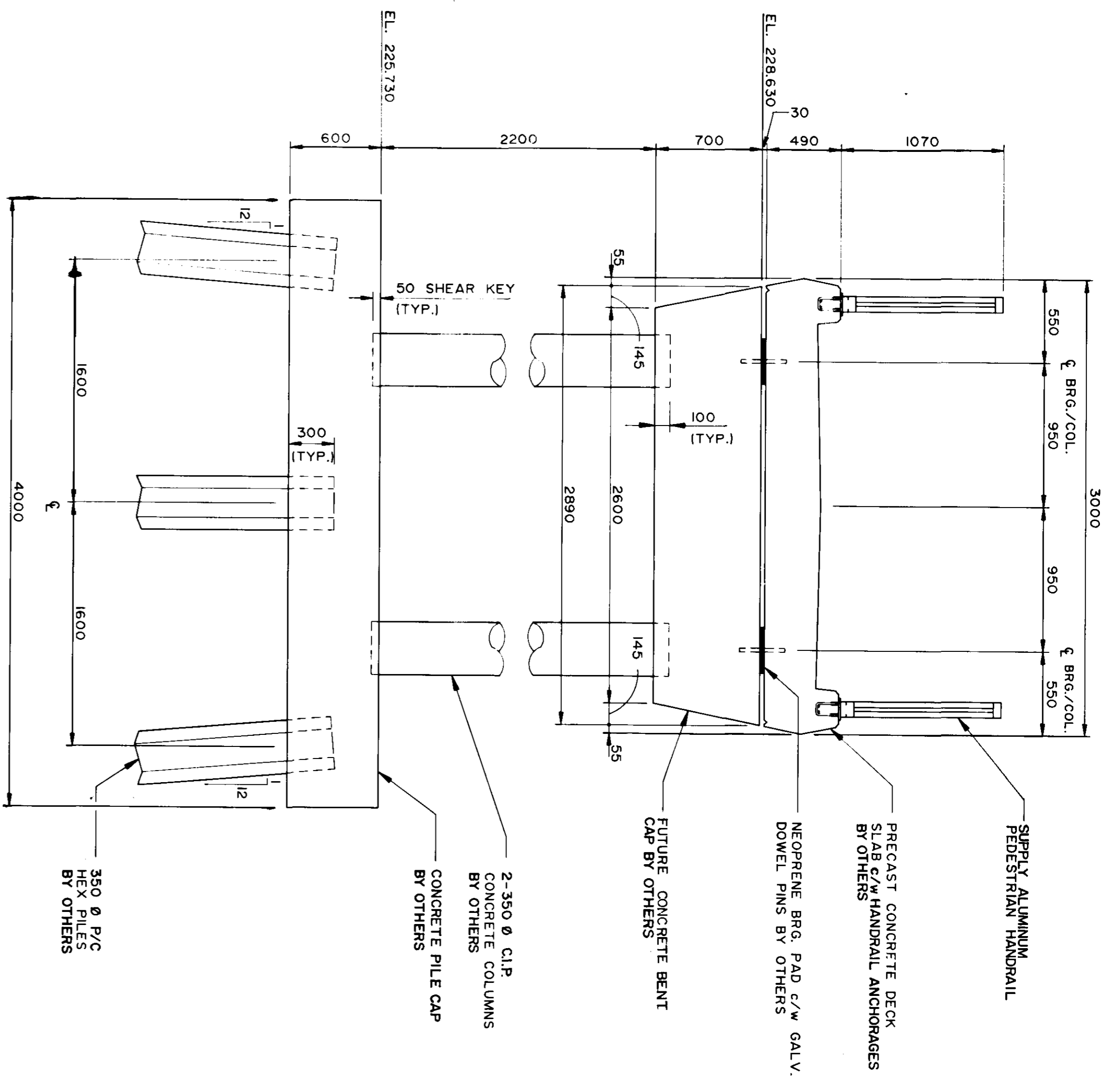




PLAN  
1/75



ELEVATION  
1/75



SECTION  
1/25  
\* 02.04

1. THIS CONTRACT IS FOR THE SUPPLY OF ALUMINUM PEDESTRIAN HANDRAIL ONLY. ALL OTHER WORKS ARE BY OTHERS.

**RECORD DRAWING**  
APPROVED BY: *[Signature]*  
DATE: 02.04

Consulting Engineers - Planners Environmental Scientists		ENGINEER'S SEAL B.A.J. MERINICK REGISTERED PROFESSIONAL ENGINEER		THE CITY OF WINNIPEG WORKS AND OPERATIONS DIVISION STREETS AND TRANSPORTATION DEPARTMENT	
NO. 1 REVISIONS	DATE	BY	DATE	1992 BRIDGE MAINTENANCE UXBRIDGE ROAD PEDESTRIAN BRIDGE	CITY DRAWING NUMBER B161-92-02
B.M. ELEV.	HORIZ. SCALE AS NOTED VERTICAL	DRAWN BY S.K.B. CHECKED BY B.A.N.	DATE SEPTEMBER/92	ALUMINUM PEDESTRIAN HANDRAIL ELEVATION	SHEET 1 OF 2
B-5923-2					



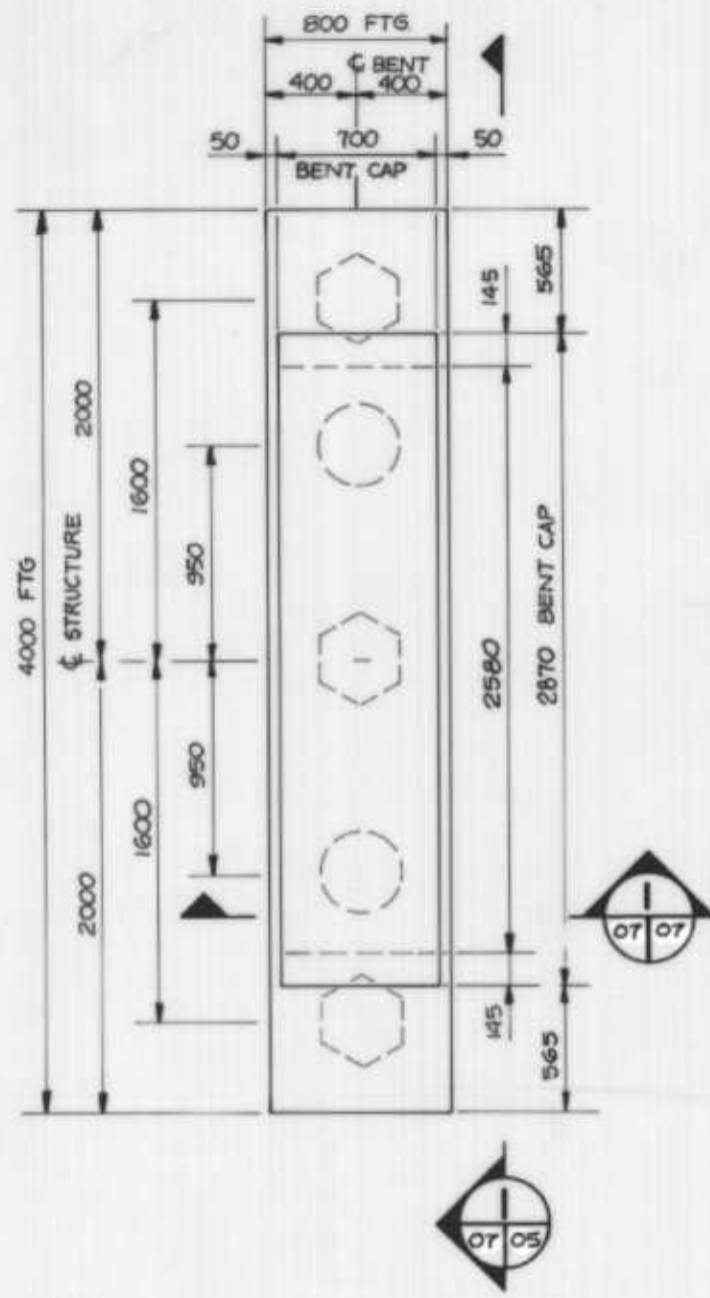




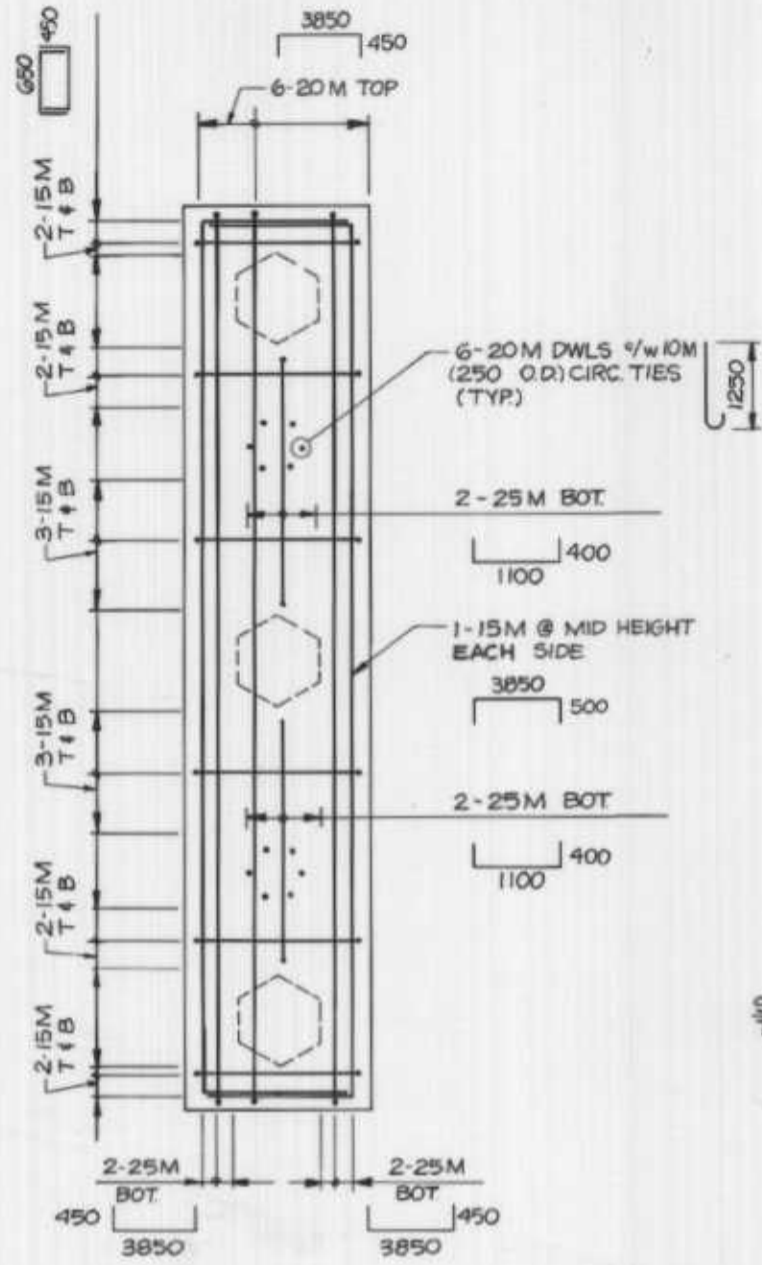




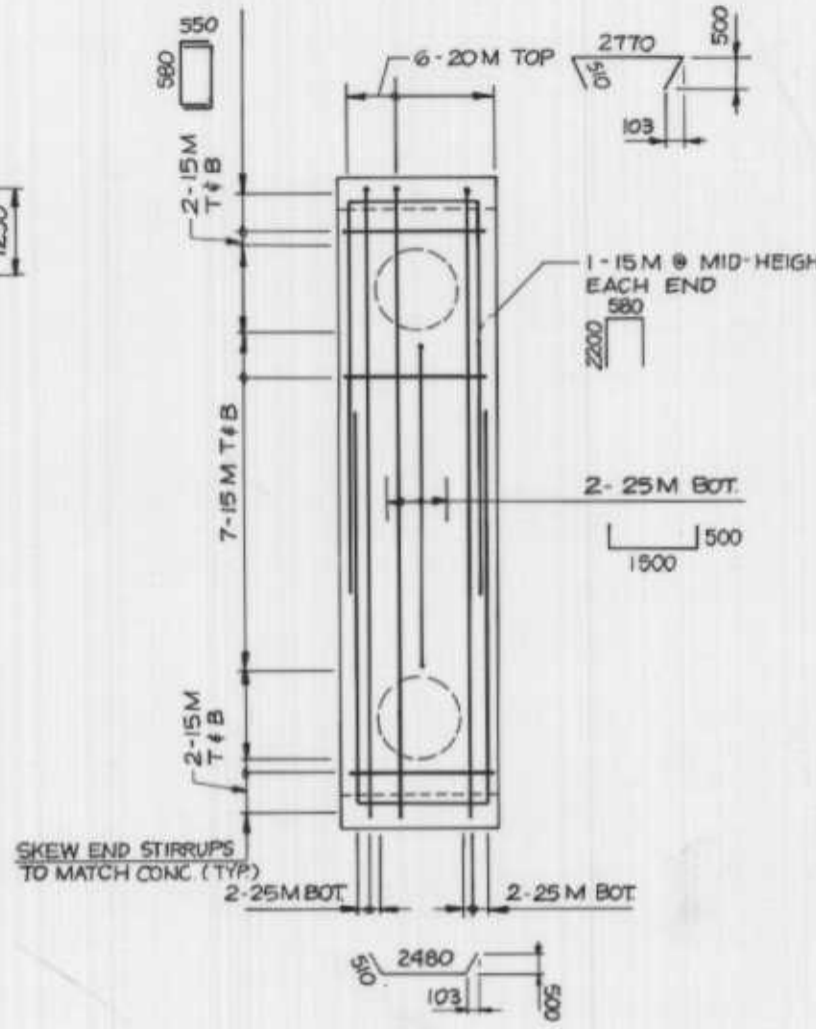




CONCRETE

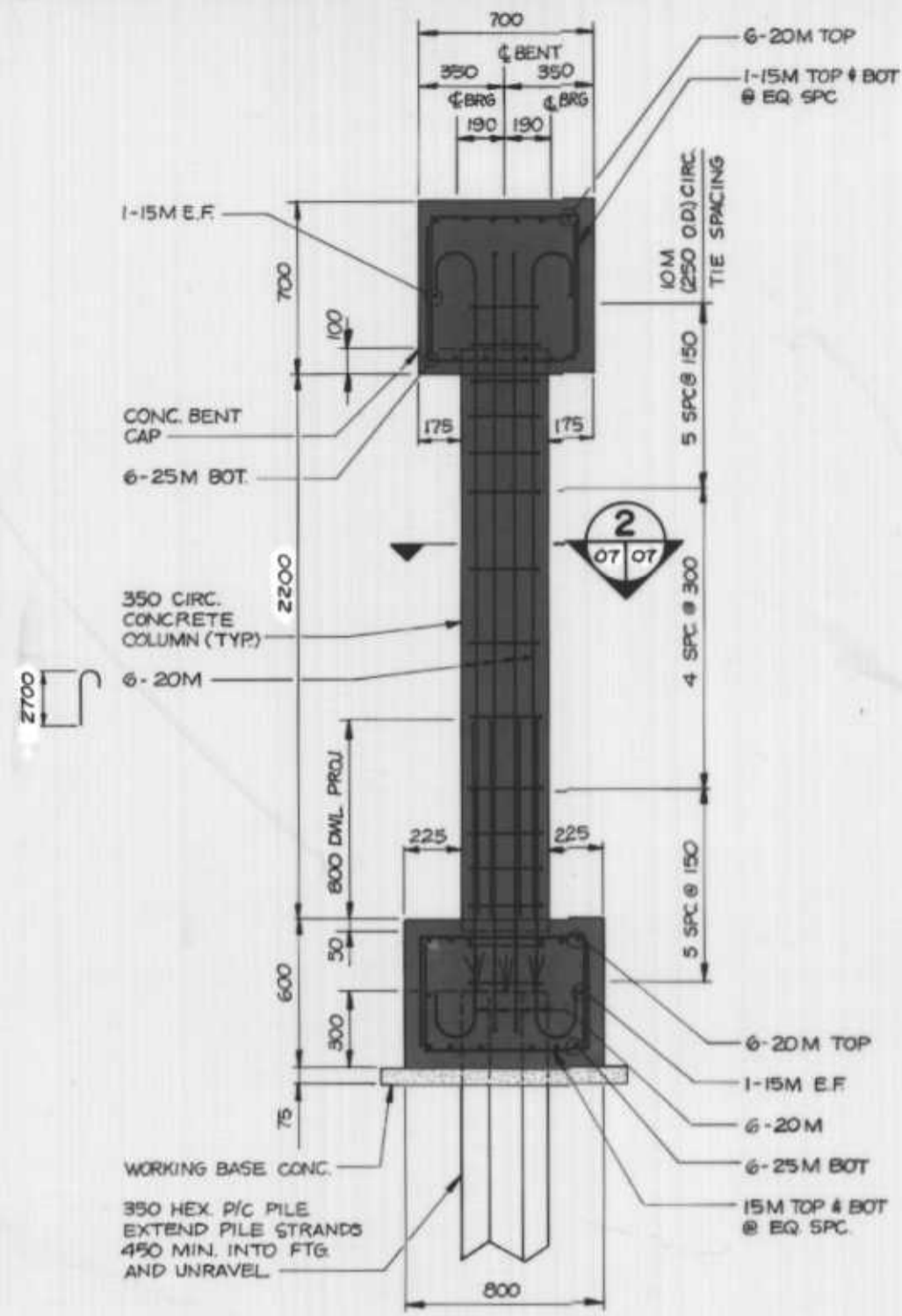


REINFORCING-FOOTING

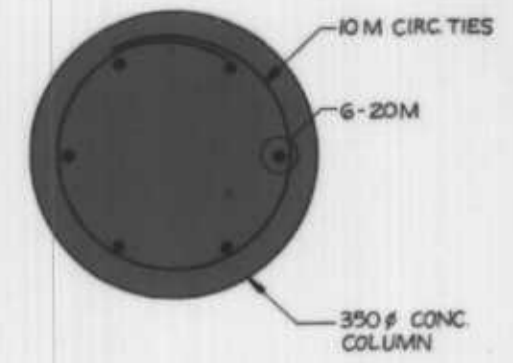


REINFORCING-BENT CAP

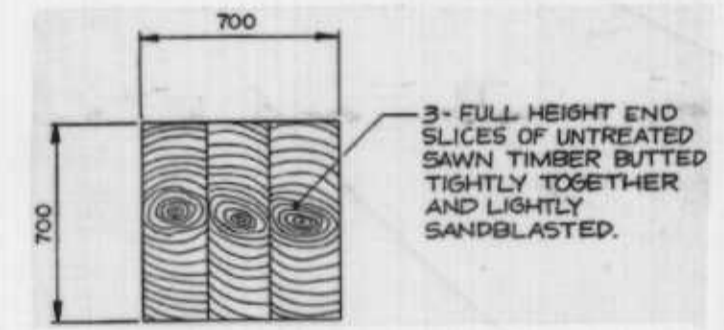
PLAN-CENTER BENT  
1:25



SECTION 1  
1:20



SECTION 2  
N.T.S.



FORMLINER DETAIL  
-BENT CAP ENDS  
N.T.S.

- NOTES:
1. VERTICAL SURFACES OF THE COLUMN BENT CAP PERPENDICULAR TO THE SPAN SHALL HAVE A HORIZONTAL WOOD PLANK FORMLINER FINISH. PLANKS SHALL BE SUPPLIED, PREPARED AND INSTALLED AS SPECIFIED.
  2. VERTICAL SURFACES AT THE ENDS OF THE COLUMN BENT CAP SHALL HAVE A SAWN TIMBER FORMLINER FINISH. THE SAWN TIMBER SLICES SHALL BE UNTREATED, PREPARED AND INSTALLED AS SPECIFIED. SEE ARRANGEMENT DETAIL THIS DRAWING.

RECORD DRAWING  
APPROVED BY: *[Signature]* DATE: 23-07-05

LOCATION APPROVED UNDERGROUND STRUCTURES  
N/A  
SURV. U/G STRUCTURES COMMITTEE DATE  
NOTE:  
LOCATION OF UNDERGROUND STRUCTURES AS SHOWN ARE BASED ON THE BEST INFORMATION AVAILABLE BUT NO GUARANTEE IS GIVEN THAT ALL EXISTING UTILITIES ARE SHOWN OR THAT THE GIVEN LOCATIONS ARE EXACT. COORDINATION OF EXISTING AND EXACT LOCATION OF ALL SERVICES MUST BE OBTAINED FROM THE INDIVIDUAL UTILITIES BEFORE PROCEEDING WITH CONSTRUCTION.

NO	REVISIONS	DATE	BY

**DILLON**  
Consulting Engineers • Planners  
Environmental Scientists

DESIGNED BY: BAN.	CHECKED BY: RAW.
DRAWN BY: LLG.	APPROVED BY: <i>[Signature]</i>
HOR SCALE: AS NOTED	DATE: 22-07-05
VERTICAL: AS NOTED	DATE: 22-07-05

ENGINEER'S SEAL  
PROVINCE OF MANITOBA  
22-07-05  
B.A.J. NEIRINCK  
REGISTERED PROFESSIONAL ENGINEER

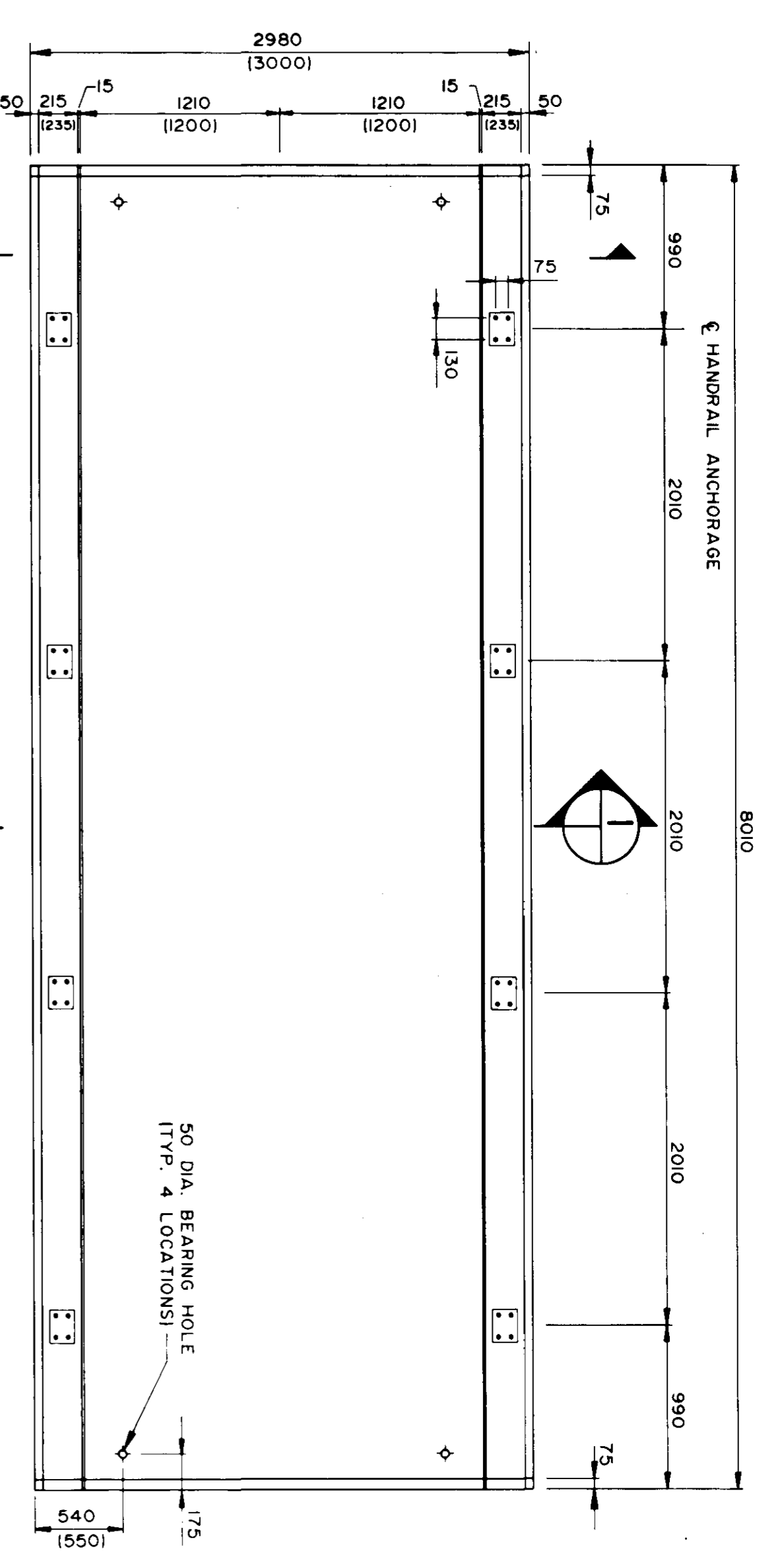
**THE CITY OF WINNIPEG**  
WORKS AND OPERATIONS DIVISION  
STREETS AND TRANSPORTATION DEPARTMENT

1992 BRIDGE MAINTENANCE  
UXBRIDGE ROAD  
PEDESTRIAN BRIDGE

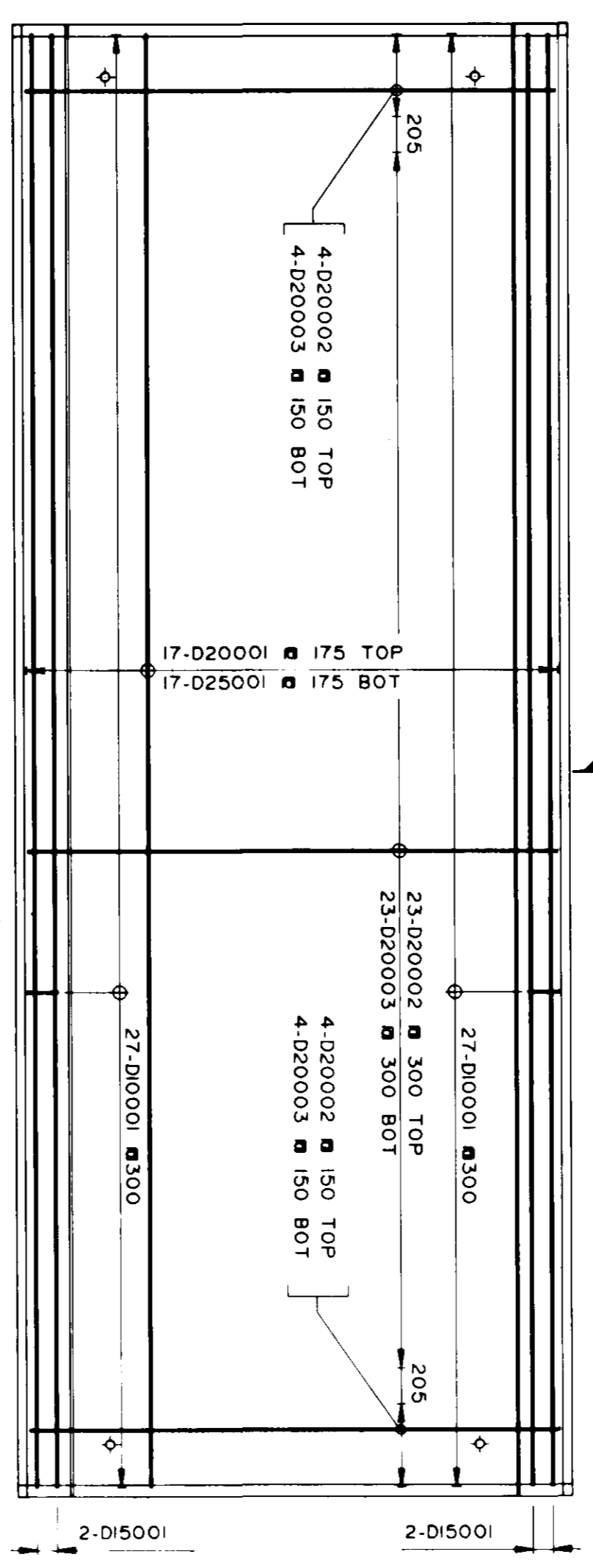
CITY DRAWING NUMBER: B161-92-07  
SHEET 4 OF 7

CENTER BENT  
B-5923-7

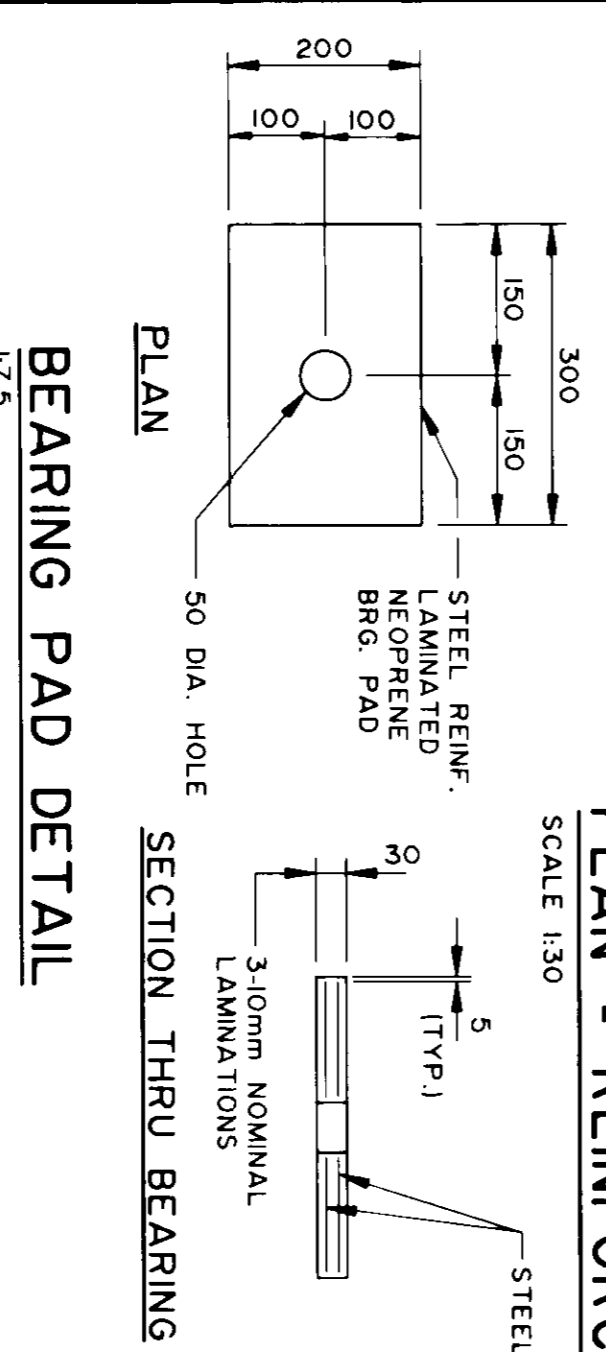




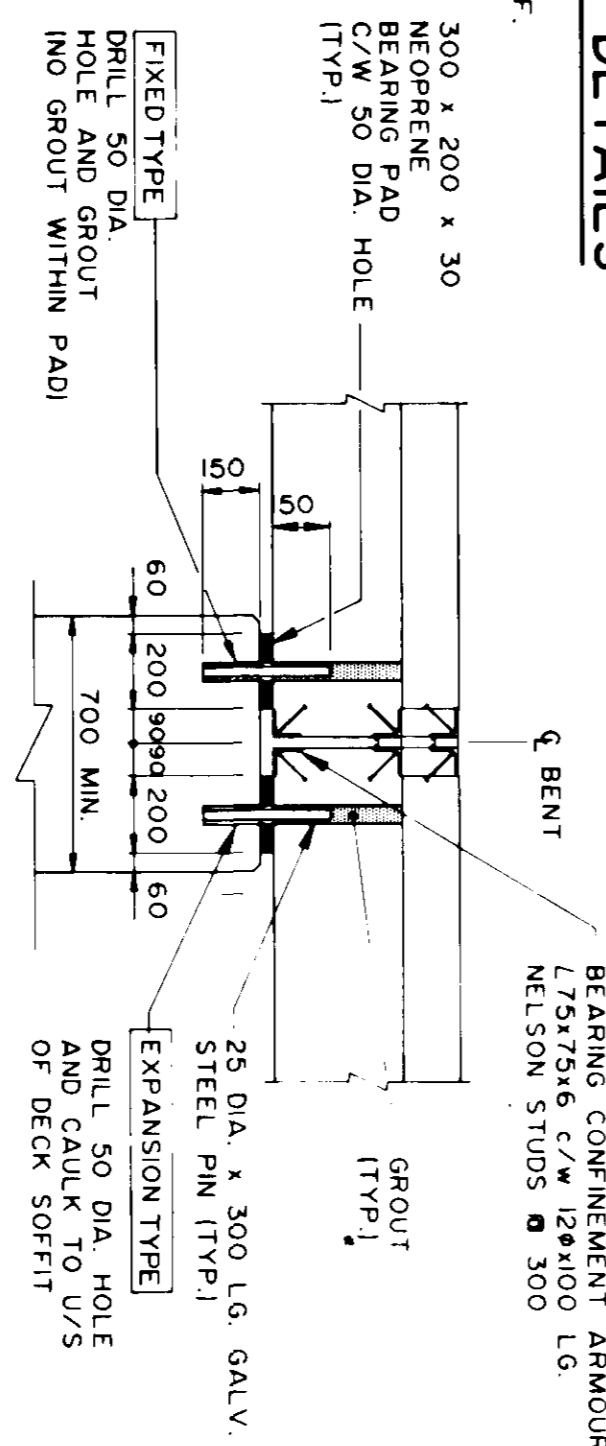
PLAN - CONCRETE DETAILS  
SCALE 1:30



PLAN - REINFORCING DETAILS  
SCALE 1:30



BEARING PAD DETAIL  
SCALE 1:7.5

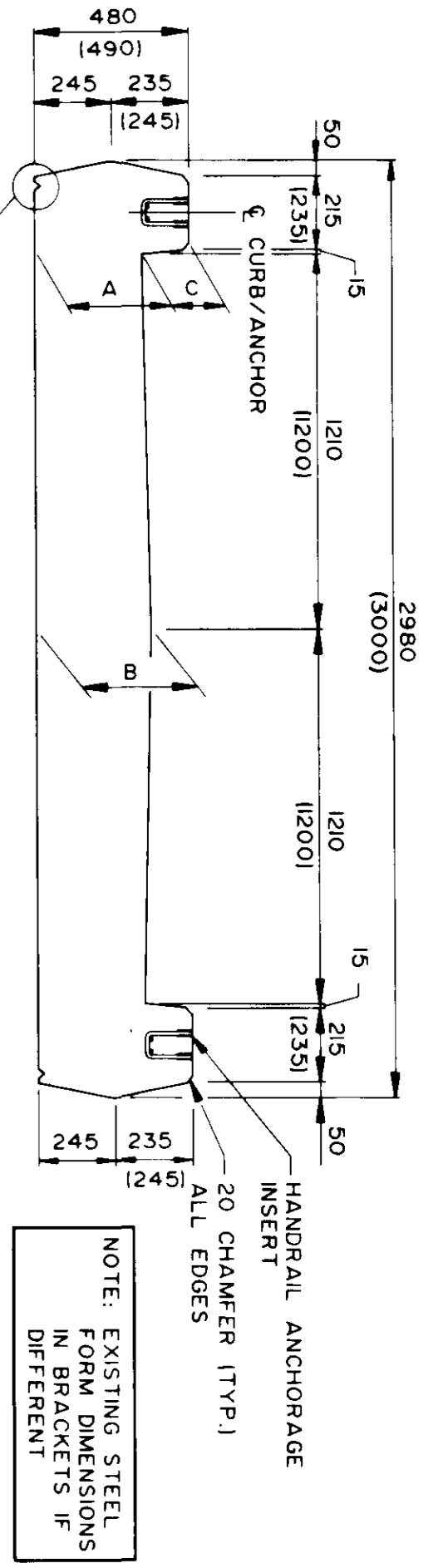


TYPICAL BEARING DETAIL AT BENT CAP  
SCALE 1:20

NOTE: SEE ELEVATION ON DWG 02 FOR ACTUAL LOCATIONS OF FIXED AND EXPANSION BEARINGS

**REINFORCING SCHEDULE**

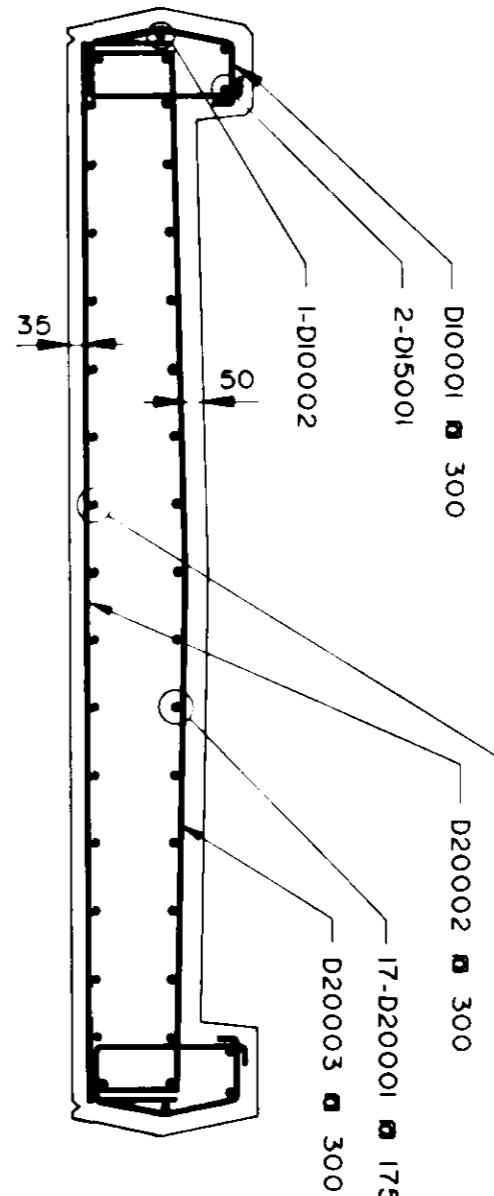
MARK	NO. BARS	SIZE	LENGTH	SHAPE	MASS
D10001	54	10	1242	135	52.7
D10002	2	10	7900	STRAIGHT	12.4
D15001	4	15	7900	STRAIGHT	49.6
D20001	17	20	8330	7900	333.5
D20002	31	20	3480	2750	232.1
D20003	31	20	3180	2750	232.1
D25001	17	25	8330	7900	555.8
TOTAL MASS					1468.2



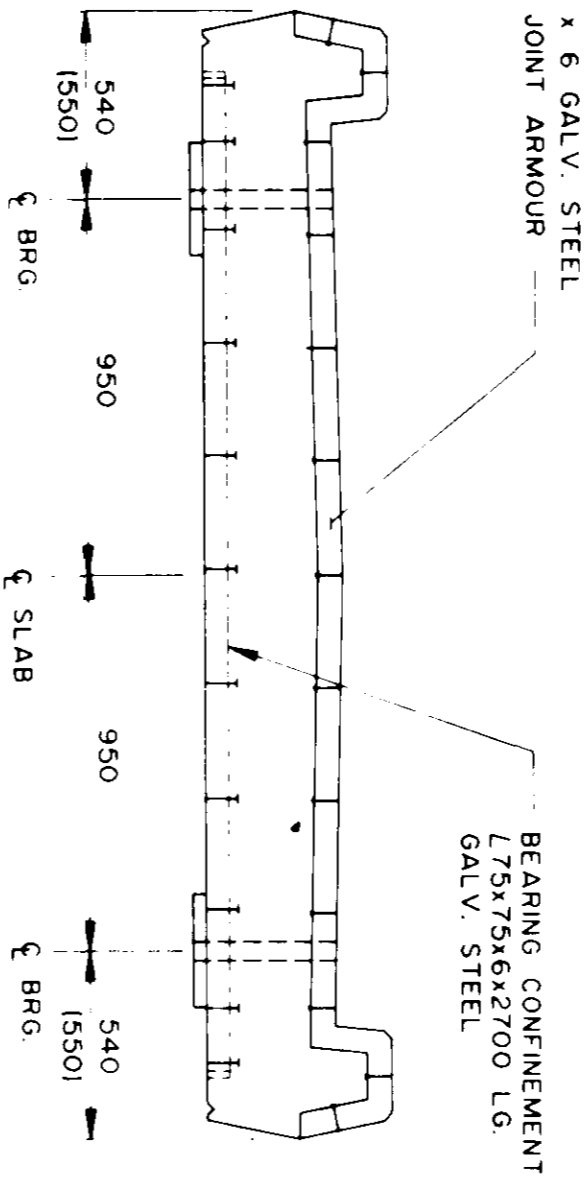
SECTION 1  
SCALE 1:20

LOCATION	ENOS	MIDSPAN
A	330	340
B	1340	1350
C	1350	1375
	150	140

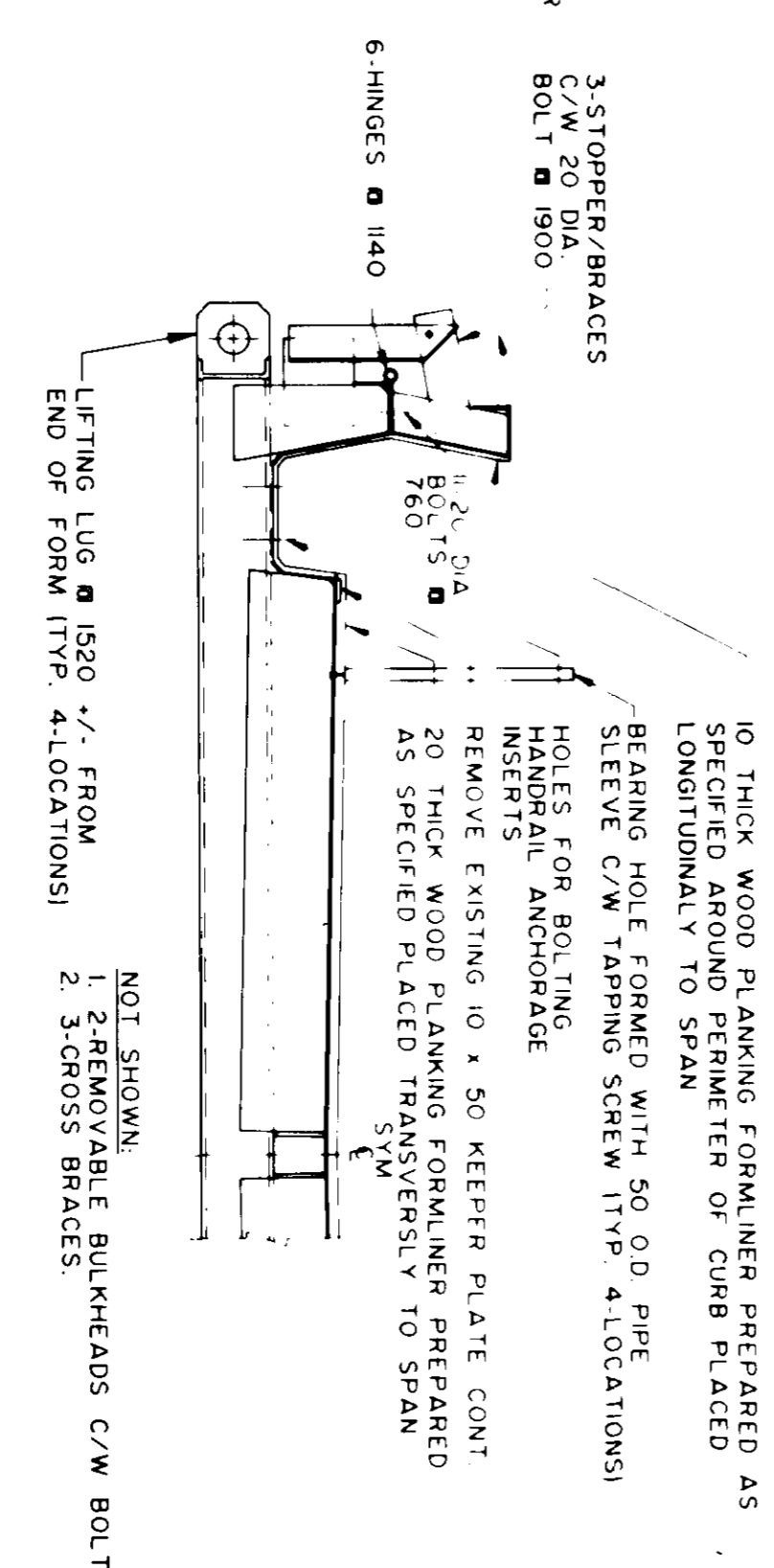
NOTE: EXISTING STEEL FORM DIMENSIONS DIFFERENT



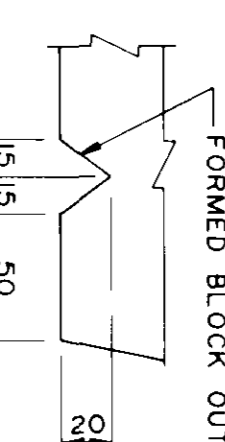
SECTION 2  
SCALE 1:20



SECTION 3  
SCALE 1:20



DETAIL - EXISTING STEEL FORM  
SCALE 1:15



DRIP CHECK DETAIL  
SCALE 1:3

**RECORD DRAWING**  
DATE: 23-07-92

**DILLON**  
Consulting Engineers - Planners  
Environmental Scientists

APPROVED BY: [Signature]  
DATE: 23-07-92

PROJECT OF WINNIPEG  
BA.1  
MERINCK  
PROFESSIONAL ENGINEER

**THE CITY OF WINNIPEG**  
WORKS AND OPERATIONS DEPARTMENT  
STREETS AND TRANSPORTATION DIVISION  
1992 BRIDGE MAINTENANCE  
UXBRIDGE ROAD  
PEDESTRIAN BRIDGE  
STANDARD 8.0m  
PRECAST CONCRETE  
PEDESTRIAN DECK SLAB

CITY DRAWING NUMBER  
B161-92-08  
SHEET 5 OF 7  
B-5923-8

**DESIGN DATA**

- DESIGN SPECIFICATIONS**
- CAN/CSA-S6-88
  - ONTARIO HIGHWAY BRIDGE DESIGN CODE 1983
- LIVE LOAD**
- PEDESTRIAN LOAD = 5.0MPa
  - ONTARIO HIGHWAY BRIDGE MAINTENANCE
  - REAR AXLE = 70kN MAX SPEED = 25km/h
- CONCRETE**
- f<sub>c</sub> = 40MPa AT 28 DAYS
  - f<sub>ci</sub> = 25MPa AT STRIPPING
  - f<sub>ci</sub> = 30MPa BEFORE TURNING SLAB OVER
- REINFORCING STEEL**
- CSA G30.12-M77 GRADE 400
  - ALL REINFORCING STEEL IS EPOXY COATED
  - 35mm BOTTOM DECK SLAB
  - 40mm ALL OTHER SURFACES UNLESS OTHERWISE NOTED

**GENERAL NOTES**

- PRECAST CONCRETE DECK SLABS SHALL BE CAST WITH THE WEARING SURFACE FINISH DOWN. THE SLABS SHALL BE TURNED OVER AFTER REMOVAL FROM FORM. THE CONTRACTOR SHALL LIMIT HANDLING OF THE PRECAST CONCRETE DECK SLABS IN THE UPSIDE DOWN POSITION TO A MINIMUM.
- THE CONTRACTOR SHALL BE RESPONSIBLE FOR THE DESIGN, SUPPLY, AND INSTALLATION OF ADEQUATE LIFTING DEVICES SO THAT THE STRESSES PRODUCED FROM FORM STRIPPING, HANDLING, TRANSPORTATION, AND ERECTION ARE WITHIN ACCEPTABLE LIMITS TO CONTROL CRACKING. FOR THE CHOSEN METHOD OF CONSTRUCTION, LIFTING DEVICES SHALL BE CUT OFF 35mm BELOW THE SURFACE OF THE CONCRETE. AT THE CONTRACTOR AND ADMINISTRATION APPROVED UNLESS OTHERWISE APPROVED BY THE CONTRACT ADMINISTRATION.
- ALL EDGES SHALL BE CHAMFERED.
- STEEL FOR EXPANSION JOINT ARMOUR SHALL CONFORM TO CAN/CSA-G40.21-M87 GRADE 300W. ANCHOR STUDS SHALL CONFORM TO ASTM A307 FABRICATED OR OF EQUIVALENT QUALITY. THE STEEL SHALL BE GALVANIZED ACCORDING TO CSA STANDARD G64-M81 TO A NET RETENTION OF 600g/m<sup>2</sup>. ALLOWANCE FOR CHAMFERED EDGES SHALL BE PROVIDED.
- HANDRAIL ANCHOR INSERTS SHALL BE STAINLESS STEEL. ACROW-RICHMOND TYPE DGR-1. ANCHORAGE BOLTS SHALL BE 13 DIA. x 625 LG. HIGH TENSILE, STAINLESS STEEL COMPLETE WITH STAINLESS STEEL WASHERS.
- BEARINGS SHALL BE 300 x 200 x 30 STEEL REINF. LAMINATED NEOPRENE BOLTS SHALL BE 25 DIA GALVANIZED STEEL.
- PRECAST CONCRETE DECK SLAB DIMENSIONING TOLERANCES  
LENGTH +/- 3mm  
WIDTH +/- 3mm  
HEIGHT +/- 3mm
- WOOD PLANK FORMLINER SHALL BE SUPPLIED AND PREPARED AS SPECIFIED. ATTACHMENT METHODS FOR INSTALLING THE PLANKS SHALL BE AS APPROVED AS BY THE CONTRACT ADMINISTRATION. MECHANICAL FASTENERS SHALL NOT MAR THE FINISHED CONCRETE SURFACE.

**ERECTION NOTES**

- THE CONTRACTOR SHALL PROVIDE ADEQUATE BRACING OF CONCRETE DECK SLABS AT ALL STAGES TO PREVENT TOPPING OFF. THE PERMANENT BEARINGS OR TEMPORARY SUPPORTS.
- BEARINGS SHALL BE INSTALLED ON BENTS OR ABUTMENTS ACCORDING TO FIELD MEASUREMENTS OF THE PRECAST CONCRETE DECK SLABS PRIOR TO ERECTION.
- THE PRECAST CONCRETE DECK SLABS SHALL ONLY BE HANDLED AT THE LIFTING DEVICES.

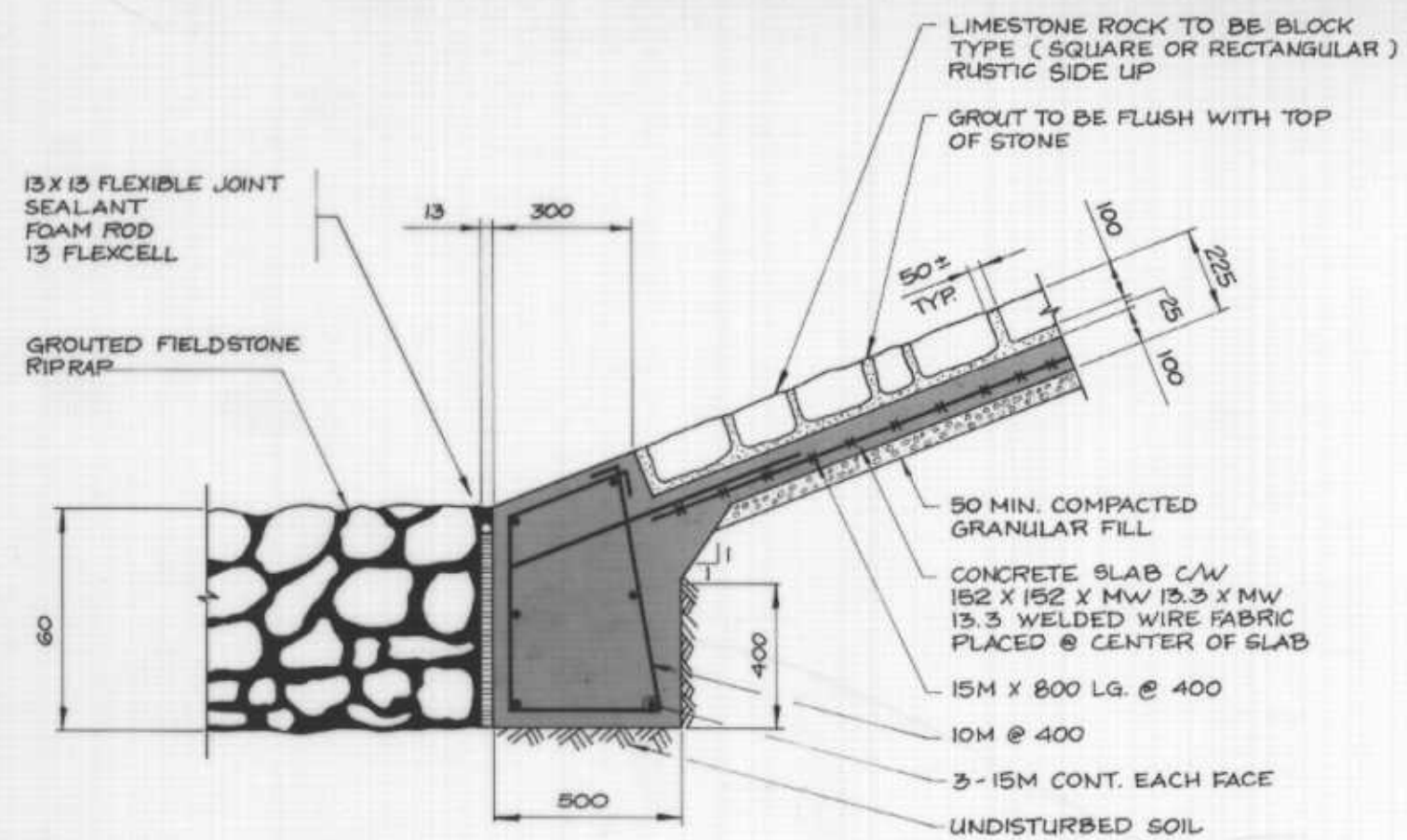
**BILL OF MATERIALS**

ITEM	NO. REQ'D
1. PRECAST CONCRETE DECK SLABS	2
2. 300 x 200 x 30 STEEL REINF. LAMINATED NEOPRENE BEARING PAD C/W 50 DIA. HOLE IN CENTER	8
3. 25 DIA. x 335 LG. STEEL GALV. DOWEL PIN	8
4. EXPANSION JOINTS (INCLUDES FABRICATED STEEL JOINT AND NEOPRENE COMPRESSION SEAL)	3
5. BEARING CONFINEMENT ARMOUR	4
6. STAINLESS STEEL HANDRAIL ANCHORAGE INSERTS ACROW-RICHMOND TYPE DGR-1	20
7. HANDRAIL ANCHORAGE BOLTS C/W 1/3 DIA. x 50 LG. 5/5 BOLT 5/5 LOCK WASHER & 5/5 FLAT WASHERS	80

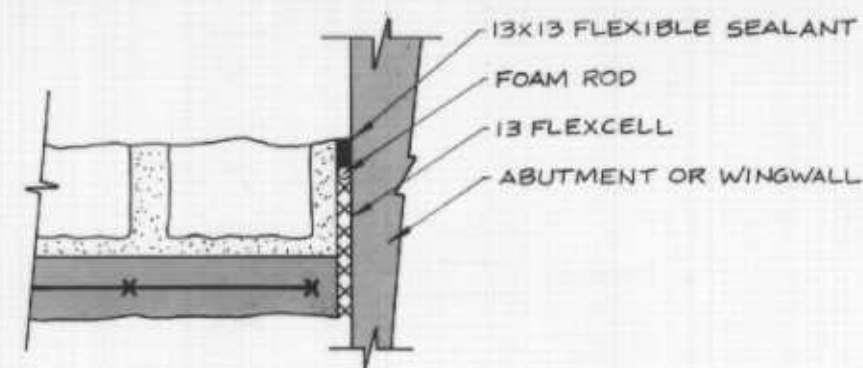
FOR INFORMATION ONLY  
SUPPLIED AND DELIVERED BY OTHERS  
INSTALLED BY CONTRACTOR



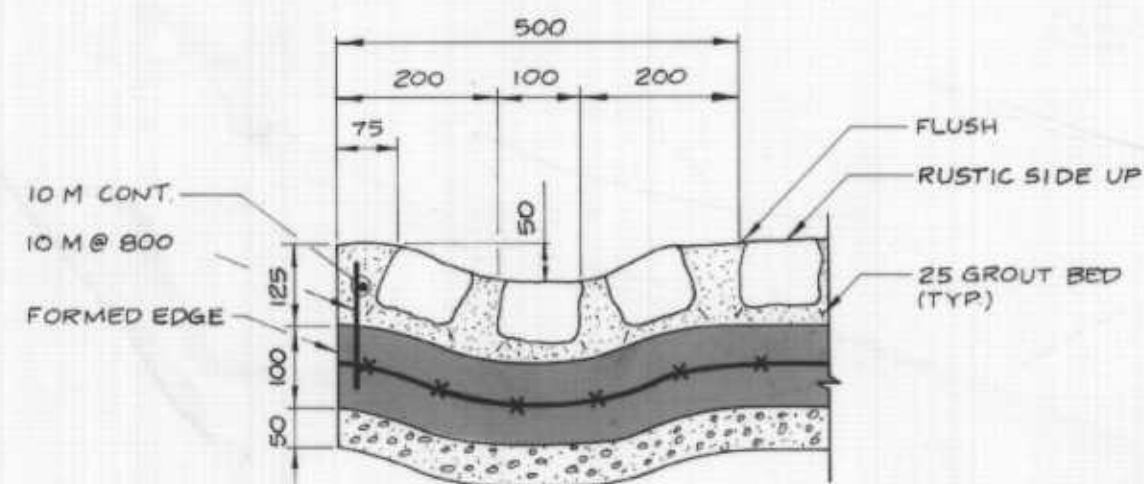




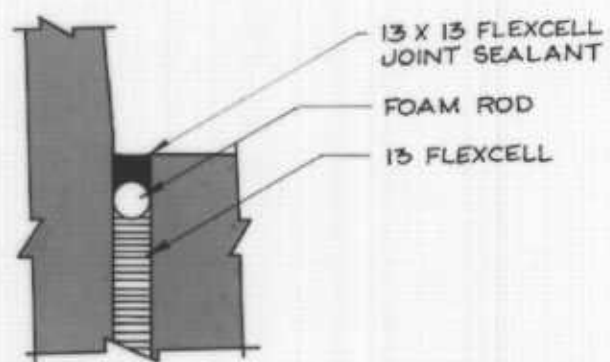
DETAIL A  
1:10



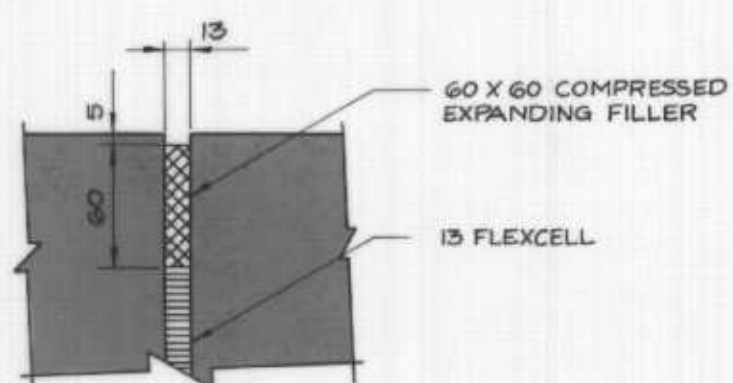
DETAIL B  
N.T.S.



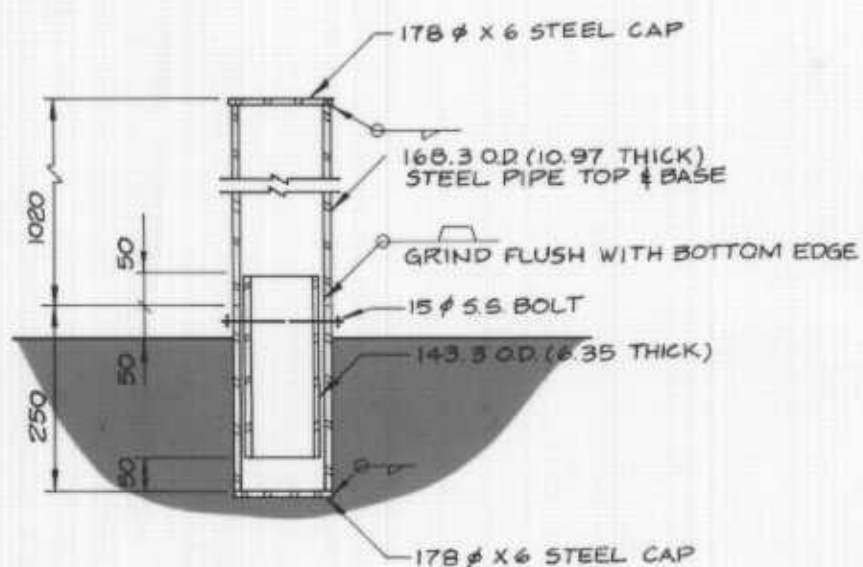
TYPICAL RIPRAP SWALE DETAIL  
1:7.5



DETAIL C  
N.T.S.



DETAIL D  
N.T.S.



BOLLARD DETAIL  
1:10

NOTE: HOT DIP GALVANIZED AFTER FABRICATION.

RECORD DRAWING  
APPROVED BY: *[Signature]* DATE: 93.07.05

LOCATION APPROVED UNDERGROUND STRUCTURES	B.M. ELEV.
N/A	
SUPV. U/G STRUCTURES COMMITTEE	
DATE	
NOTE:	
LOCATION OF UNDERGROUND STRUCTURES AS SHOWN ARE BASED ON THE BEST INFORMATION AVAILABLE BUT NO GUARANTEE IS GIVEN THAT ALL EXISTING UTILITIES ARE SHOWN OR THAT THE GIVEN LOCATIONS ARE EXACT. CONFIRMATION OF EXISTENCE AND EXACT LOCATION OF ALL SERVICES MUST BE OBTAINED FROM THE INDIVIDUAL UTILITIES BEFORE PROCEEDING WITH CONSTRUCTION.	
NO. REVISIONS	DATE BY

DESIGNED BY	B.A.N.	CHECKED BY	R.A.W.
DRAWN BY	G.J.T.	APPROVED BY	<i>[Signature]</i>
HOR. SCALE	AS SHOWN	AUTHORIZED BY	<i>[Signature]</i>
VERTICAL	AS SHOWN	DATE	22.09.92
DATE	SEPTEMBER/92	DATE	22.09.92

**DILLON**  
Consulting Engineers • Planners  
Environmental Scientists

ENGINEER'S SEAL  
PROVINCE OF MANITOBA  
B.A.J. NEJIRICK  
REGISTERED PROFESSIONAL ENGINEER

**THE CITY OF WINNIPEG**  
WORKS AND OPERATIONS DIVISION  
STREETS AND TRANSPORTATION DEPARTMENT

1992 BRIDGE MAINTENANCE  
UXBRIDGE ROAD  
PEDESTRIAN BRIDGE

MISCELLANEOUS DETAILS

CITY DRAWING NUMBER: B161-92-10  
SHEET 7 OF 7  
B-5923-10