

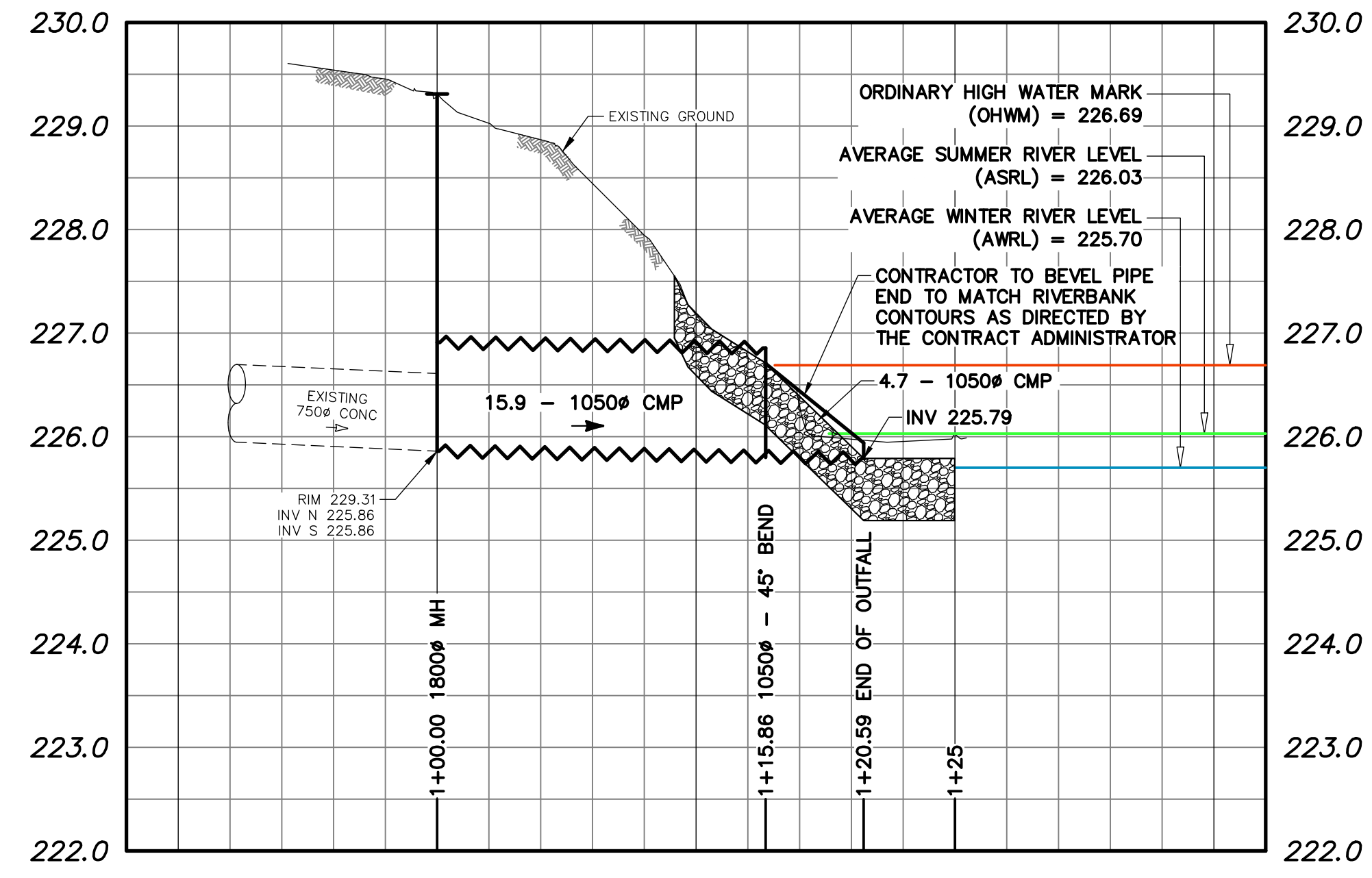
SE BRIDGE CORNER
DATE: 2022-07



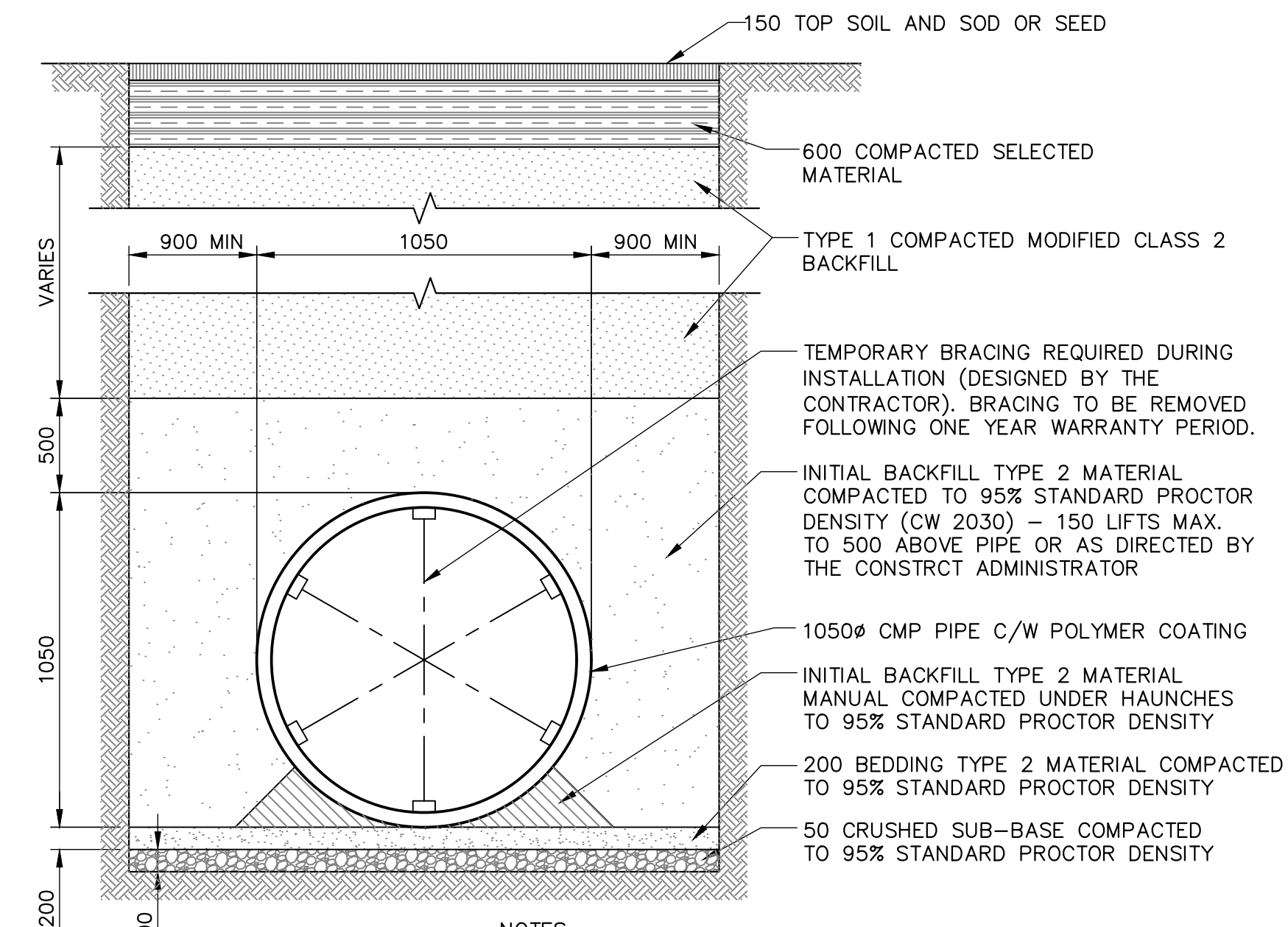
SW BRIDGE CORNER
DATE: 2022-07



LOOKING NORTH
DATE: 2022-07

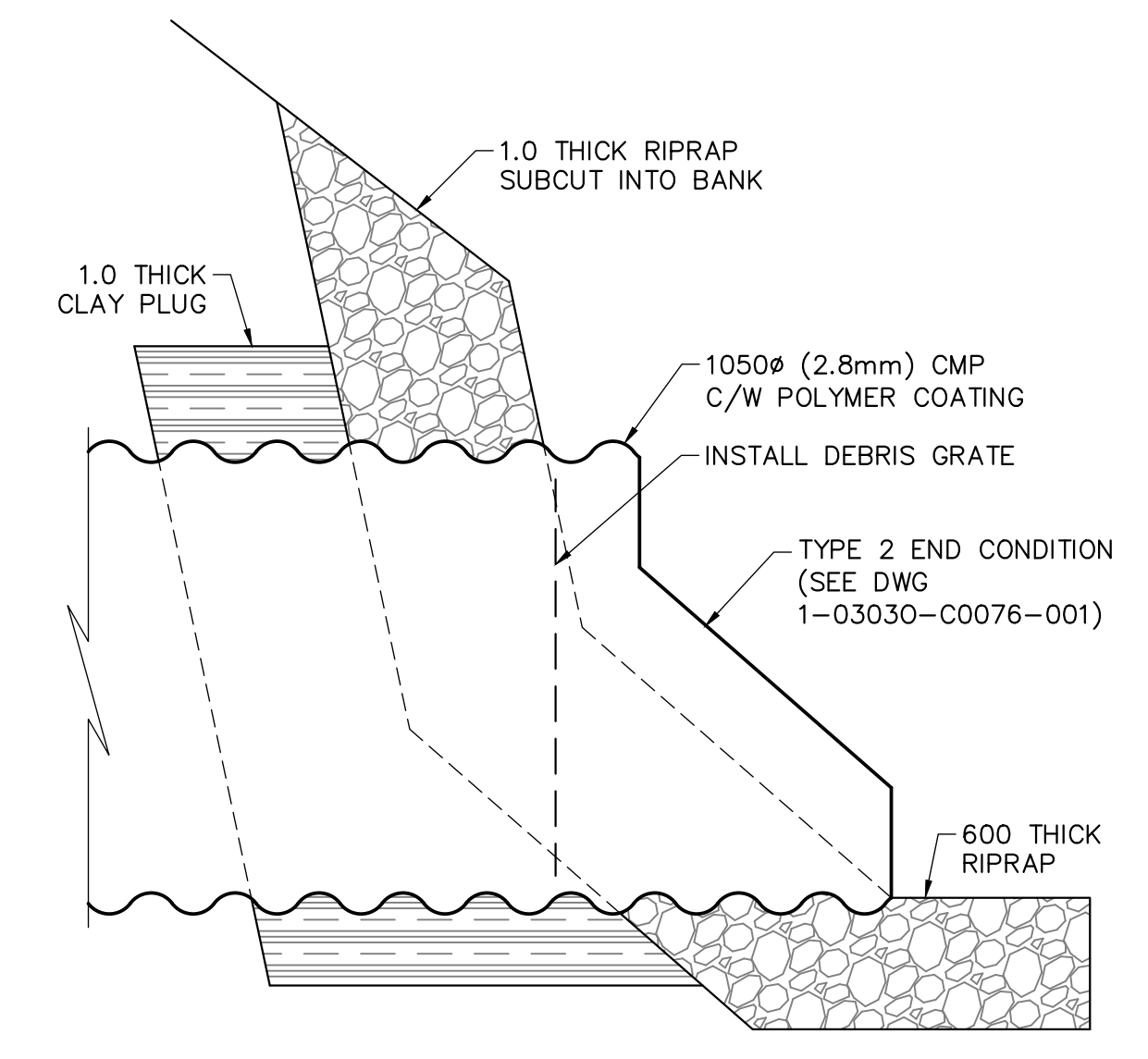


NOTE: CHAINAGES SHOWN ARE ALONG ϕ PROPOSED OUTFALL



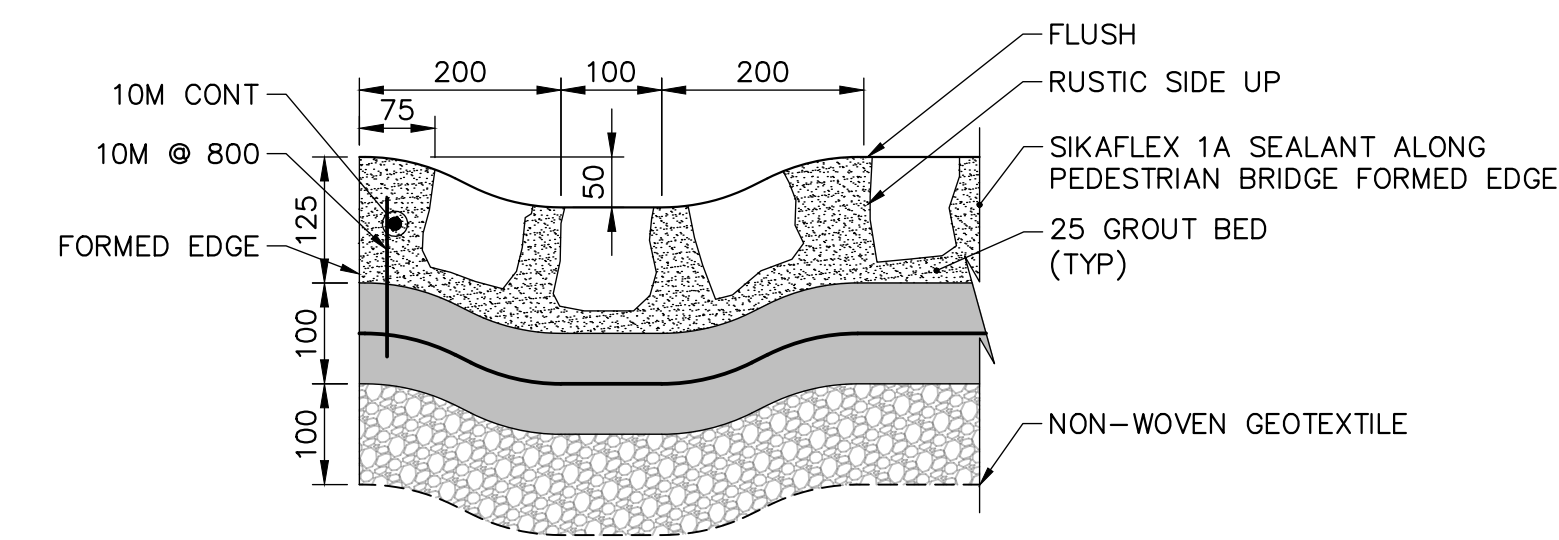
- NOTES:
1. THE CONTRACTOR TO PROVIDE TEMPORARY SHORING WHERE REQUIRED IN ACCORDANCE WITH SPECIFICATIONS.
 2. CONTRACTOR TO SUPPLY HEATING AND HOARDING TO ACHIEVE COMPACTION OF BEDDING AND BACKFILL.

PIPE BEDDING DETAIL
SCALE: N.T.S.

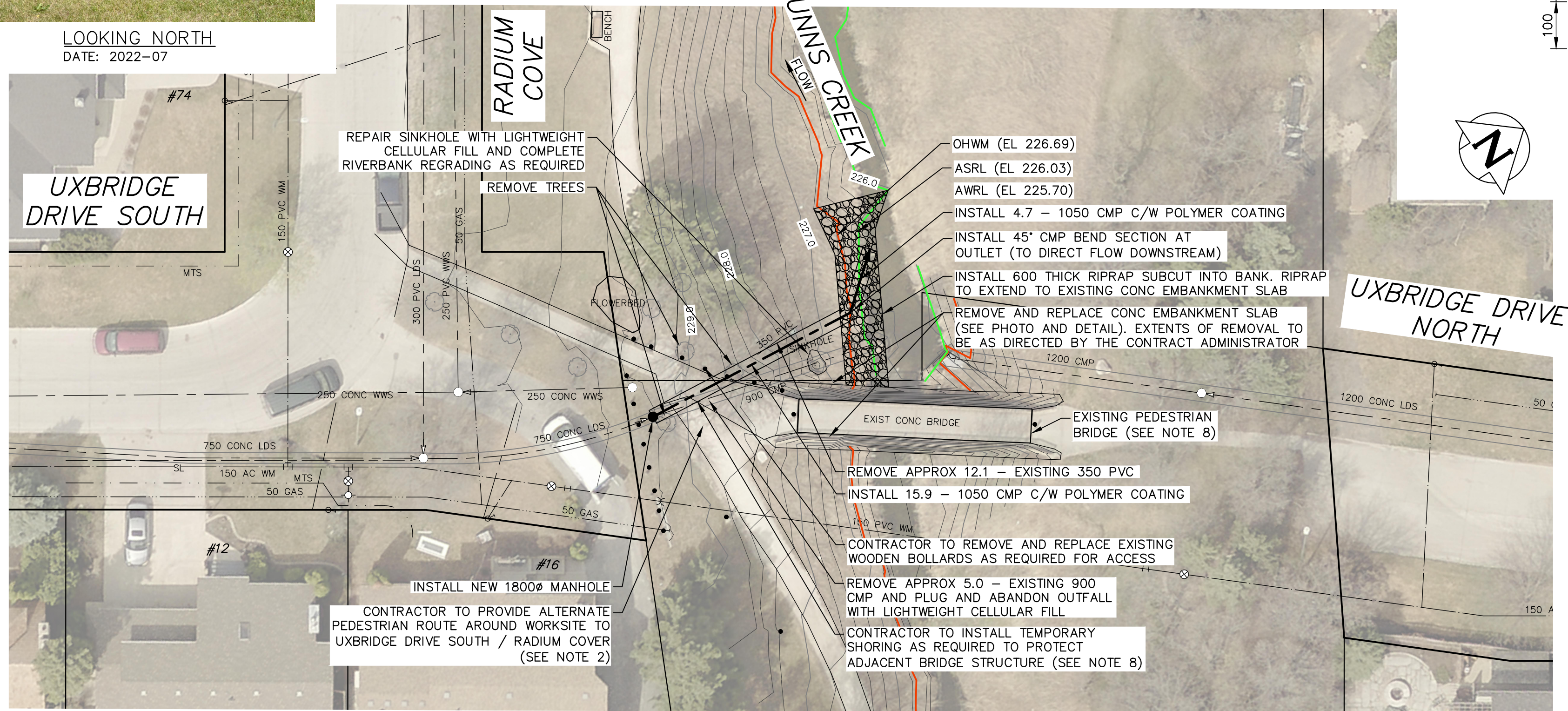


- NOTES:
1. ALL EXCAVATED MATERIAL WITH 76.0 OF THE ASRL MUST BE REMOVED FROM SITE (NO STOCKPILING).
 2. CONTRACTOR TO PROVIDE AND INSTALL PROPER WARNING SIGNS ALONG ACCESS ROUTE AND PEDESTRIAN ROUTES CONCERNING WORK SITE AS REQUIRED. CONTRACTOR TO PROVIDE ALTERNATE PEDESTRIAN ACCESS ROUTE AS REQUIRED.
 3. CONTRACTOR TO RESTORE SITE, INCLUDING ROAD, CURBS, SIDEWALK, PATHWAYS, AND LANDSCAPING FEATURES, TO PRE-CONSTRUCTION CONDITION.
 4. PERMITS AS REQUIRED FOR CONSTRUCTION OF TEMPORARY ACCESS IS THE RESPONSIBILITY OF THE CONTRACTOR.
 5. CONTRACTOR TO MARK ALL TREES FOR REMOVAL AND/OR PRUNING FOR REVIEW AND APPROVAL BY THE CONTRACT ADMINISTRATOR PRIOR TO CONSTRUCTION.
 6. CONTRACTOR TO SUBMIT ACCESS PLAN AND EQUIPMENT LIST TO THE CONTRACT ADMINISTRATOR A MINIMUM OF FIVE (5) BUSINESS DAYS PRIOR TO STARTING CONSTRUCTION. CONTRACTOR TO NOT ACCESS SITE PRIOR TO CONTRACT ADMINISTRATOR'S APPROVAL.
 7. CONSTRUCT TEMPORARY CLAY COFFERDAM AT CREEK AS REQUIRED (SEE DWG 1-03030-C0075-001)
 8. CONTRACTOR SHALL PROVIDE TEMPORARY SHORING AS REQUIRED TO PROTECT THE ADJACENT PEDESTRIAN BRIDGE CROSSING. RECORD DRAWING INFORMATION FOR THE PEDESTRIAN BRIDGE IS PROVIDED IN APPENDIX B.
 9. CONTRACTOR TO VERIFY LOCATION AND ELEVATION OF UTILITIES USING SOFT DIGGING METHODS AS REQUIRED PRIOR TO CONSTRUCTION.

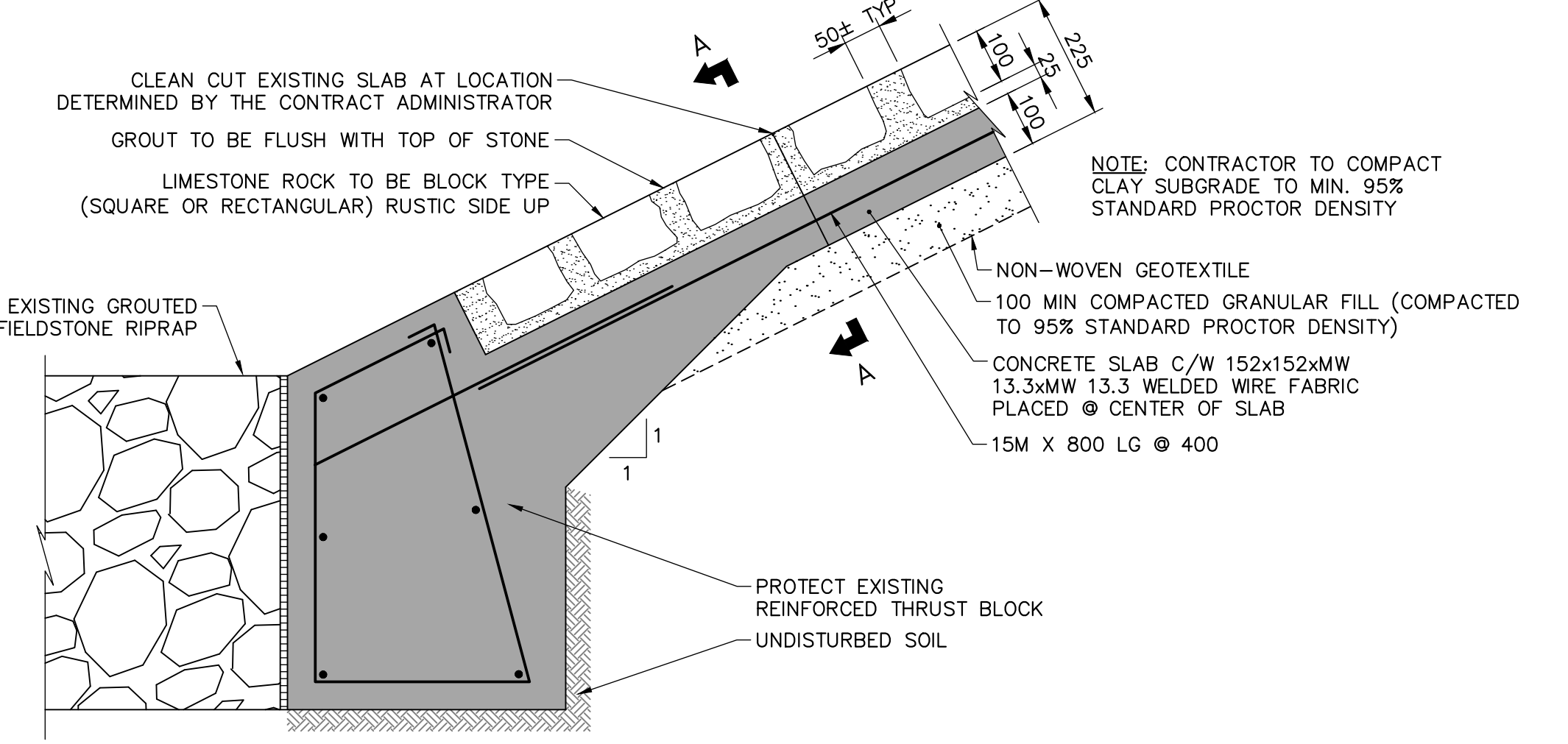
CULVERT END DETAIL
SCALE: N.T.S.



SECTION A - A
SCALE: 1:7.5



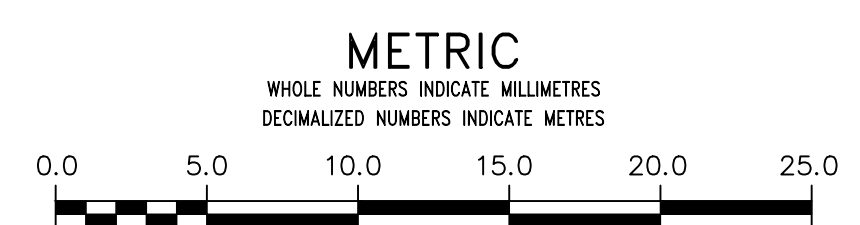
PLAN
SCALE 1:250



CONC SLAB REPAIR DETAIL
SCALE: 1:10

ES ENGINEERS
GEOSCIENTISTS
MANITOBA
Certificate of Authorization
KGS Group
No. 245

FOR INDEX PAGE SEE
DWG 1-03030-D0013-001



WARNING
IF POWER EQUIPMENT OR EXPLOSIVES ARE TO BE USED FOR EXCAVATION ON THIS PROJECT THE CONTRACTOR MUST:
1) NOTIFY THE GAS COMPANY OF THE PROPOSED LOCATION OF EXCAVATION.
2) TAKE PRECAUTION TO AVOID DAMAGE TO GAS COMPANY INSTALLATIONS.
SEE PROVINCIAL REGULATION 210/72 FOR DETAILS

LOCATION APPROVED
UNDERGROUND STRUCTURES
SUPV. U/G STRUCTURES COMMITTEE DATE
NOTE:
LOCATION OF UNDERGROUND STRUCTURES AS SHOWN ARE BASED ON THE BEST INFORMATION AVAILABLE BUT NO GUARANTEE IS GIVEN THAT ALL EXISTING UTILITIES ARE SHOWN OR THAT THE GIVEN LOCATIONS ARE EXACT. CONFIRMATION OF EXISTENCE AND EXACT LOCATION OF ALL SERVICES MUST BE OBTAINED FROM THE INDIVIDUAL UTILITIES BEFORE PROCEEDING WITH CONSTRUCTION.

B.M. ELEV.	NO.	ISSUED FOR TENDER	DATE	BY
	0	ISSUED FOR TENDER	2022 12 02	RBO
		REVISIONS	DATE	BY

KGS GROUP
DESIGNED BY NGV
DRAWN BY GEL
SCALE: HORIZONTAL 1:250, VERTICAL 1:50
CHECKED BY RBO
APPROVED BY
RELEASED FOR CONSTRUCTION
DATE 2022 12 02

ENGINEER'S SEAL
CONSULTANT DRAWING NUMBER
1-03030-C0069-001

THE CITY OF WINNIPEG
WATER AND WASTE DEPARTMENT
ENGINEERING DIVISION
2022 OUTFALL PROGRAM
16 UXBRIDGE ROAD SOUTH OUTFALL
PLAN AND PROFILE
S-MA70031497
SHEET 5 OF 12
CITY DRAWING NUMBER
1-03030-C0069-001