

NOTE: CHAINAGES SHOWN ARE ALONG  $\phi$  EXISTING OUTFALL

**NOTES:**

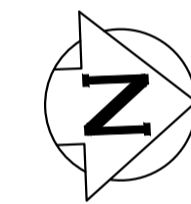
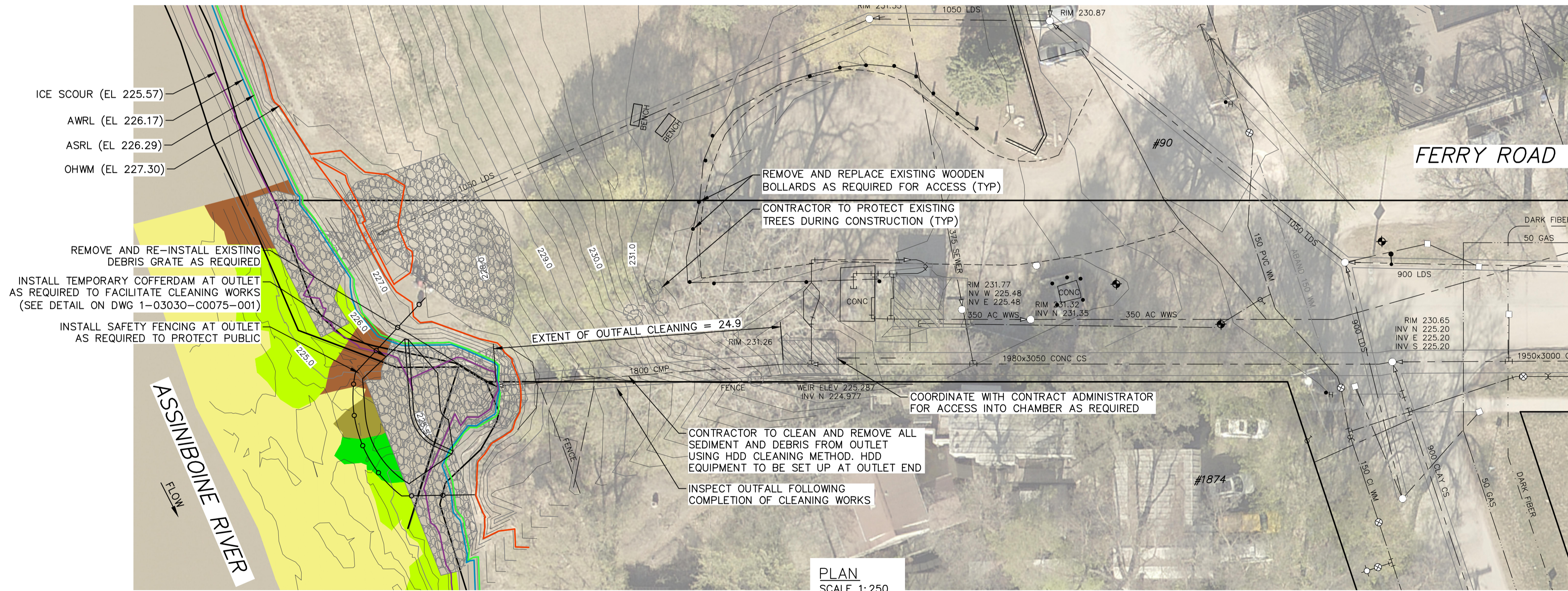
1. ALL EXCAVATED MATERIAL WITHIN 107.0 OF THE ASRL MUST BE REMOVED FROM SITE (NO STOCKPILING).
2. CONSTRUCT TEMPORARY CLAY COFFERDAM AT RIVER AS REQUIRED (SEE DWG 1-03030-C0075-001)
3. PERMITS AS REQUIRED FOR CONSTRUCTION OF TEMPORARY ACCESS ARE THE RESPONSIBILITY OF THE CONTRACTOR.
4. ALL MATERIALS, INCLUDING TEMPORARY MATERIAL PLACED TO CONSTRUCT EQUIPMENT PADS AND ACCESS RAMPS, MUST BE REMOVED FROM SITE FOLLOWING COMPLETION OF WORKS.
5. REMOVE AND RE-INSTALL DEBRIS GRATE AS REQUIRED.
6. REFERENCE APPENDIX A FOR EXISTING OUTFALL CHAMBER AND LIFT STATION RECORD DRAWINGS.



PIPE OUTLET  
DATE: 2022-07



PIPE OUTLET  
DATE: 2022-11



**SUBSTRATE LEGEND**

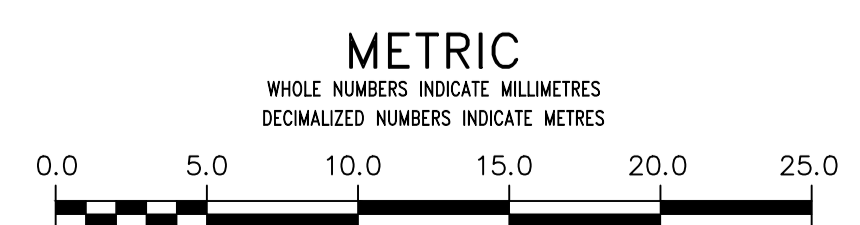
	SILTY SAND WITH CLAY AND ORGANIC MATTER
	CLAY/SILT WITH SOME SAND
	ORGANIC MATTER WITH CLAY/SILT
	ORGANIC MATTER WITH SAND/CLAY/SILT
	RIPRAP
	SAND

**SUBSTRATE TYPES BELOW ICE SCOUR AFFECTED BY THE PROJECT**

EXISTING SUBSTRATE	PERMANENT AREA (m <sup>2</sup> )	TEMPORARY AREA (m <sup>2</sup> )
RIPRAP	0.0	45.8
CLAY/SILT WITH SOME SAND	0.0	2.1
ORGANIC MATTER WITH CLAY/SILT	0.0	3.8
ORGANIC MATTER WITH SAND/CLAY/SILT	0.0	4.3
TOTAL AREA AFFECTED	0.0	56.0

**ENGINEERS GEOSCIENTISTS MANITOBA**  
Certificate of Authorization  
KGS Group  
No. 245

FOR INDEX PAGE SEE  
DWG 1-03030-D0013-001



**WARNING**  
IF POWER EQUIPMENT OR EXPLOSIVES ARE TO BE USED FOR EXCAVATION ON THIS PROJECT THE CONTRACTOR MUST:  
1) NOTIFY THE GAS COMPANY OF THE PROPOSED LOCATION OF EXCAVATION.  
2) TAKE PRECAUTION TO AVOID DAMAGE TO GAS COMPANY INSTALLATIONS.  
SEE PROVINCIAL REGULATION 210/72 FOR DETAILS

**LOCATION APPROVED UNDERGROUND STRUCTURES**  
SUPV. U/G STRUCTURES COMMITTEE DATE  
NOTE:  
LOCATION OF UNDERGROUND STRUCTURES AS SHOWN ARE BASED ON THE BEST INFORMATION AVAILABLE BUT NO GUARANTEE IS GIVEN THAT ALL EXISTING UTILITIES ARE SHOWN OR THAT THE GIVEN LOCATIONS ARE EXACT. CONFIRMATION OF EXISTENCE AND EXACT LOCATION OF ALL SERVICES MUST BE OBTAINED FROM THE INDIVIDUAL UTILITIES BEFORE PROCEEDING WITH CONSTRUCTION.

B.M. ELEV.	NO.	ISSUED FOR TENDER	DATE	BY
	0	ISSUED FOR TENDER	2022 12 02	RBO
		REVISIONS	DATE	BY

**KGS GROUP**

DESIGNED BY	NGV	CHECKED BY	RBO
DRAWN BY	GEL	APPROVED BY	
SCALE:	HORIZONTAL 1:250	RELEASED FOR CONSTRUCTION	
	VERTICAL 1:50	DATE	2022 12 02

ENGINEER'S SEAL  
CONSULTANT DRAWING NUMBER  
1-03030-C0070-001

**THE CITY OF WINNIPEG**  
WATER AND WASTE DEPARTMENT  
ENGINEERING DIVISION

2022 OUTFALL PROGRAM

**40 FERRY ROAD OUTFALL**  
PLAN AND PROFILE  
S-MA70019346

SHEET 6 OF 12  
CITY DRAWING NUMBER  
1-03030-C0070-001