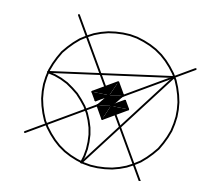
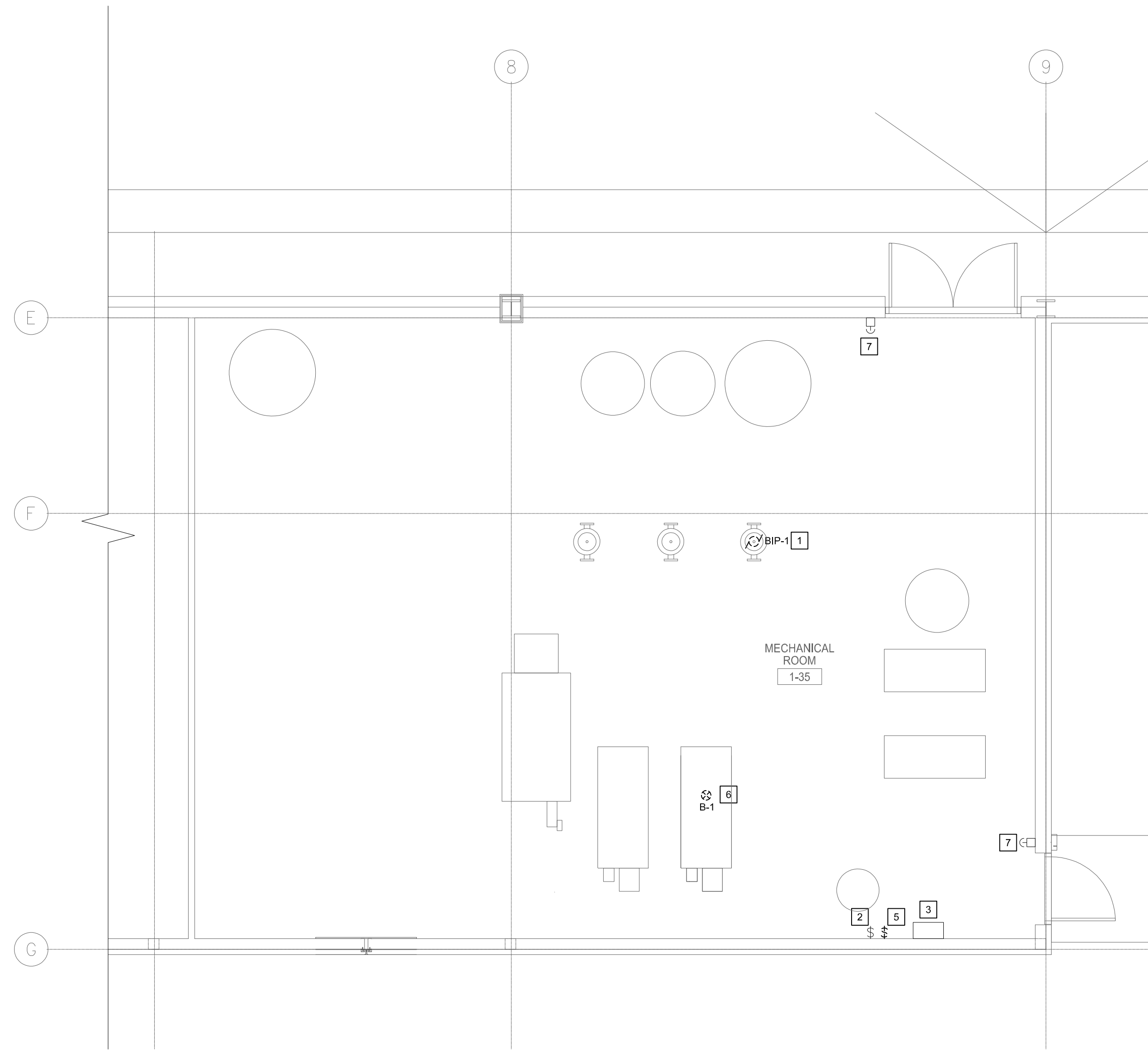


**1 PARTIAL MAIN FLOOR PLAN - ELECTRICAL - DEMOLITION PART A**  
E101 SCALE: 1:50



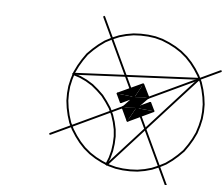
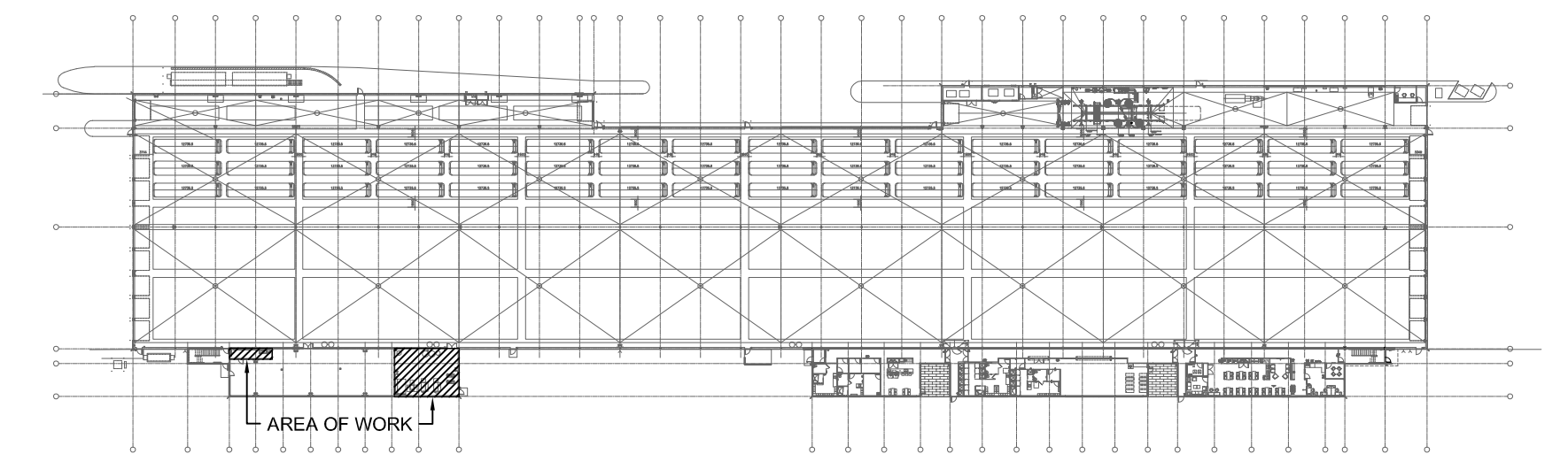
**2 PARTIAL MAIN FLOOR PLAN - ELECTRICAL - DEMOLITION PART B**  
E101 SCALE: 1:50

**GENERAL NOTES**

- A. CONTRACTOR TO VISIT SITE DURING BID AND VERIFY ALL EXISTING SERVICES ON SITE PRIOR TO SUBMITTING BID. REPORT ANY DISCREPANCIES TO CONTRACT ADMINISTRATOR DURING BID PERIOD.
- B. ALL EXISTING ELECTRICAL OUTLETS, CONDUITS, WIRING ETC. REQUIRED TO BE REMOVED ARE NOT NECESSARILY SHOWN ON THIS DRAWING. CONTRACTOR SHALL REMOVE ALL UNNECESSARY EXISTING ELECTRICAL OUTLETS, WIRING CONDUIT ETC. IN PORTIONS OF EXISTING BUILDING WHICH ARE BEING ALTERED AND REMODELED. ANY ELECTRICAL OUTLETS, WIRING ETC. ADJACENT TO THE AREA BEING RENOVATED WHICH ARE NECESSARY FOR THE OPERATION OF THE EXISTING BUILDING SHALL BE RELOCATED AS REQUIRED AND RECONNECTED TO SUIT. CONTRACTOR TO ADVISE GENERAL CONTRACTOR TO PATCH, REPAIR AND PAINT EXISTING WALLS WHERE EXISTING ELECTRICAL DEVICES HAVE BEEN REMOVED (INSTALLATION OF BLANK COVERPLATES OVER ABANDONED OUTLETS IS NOT ACCEPTABLE, UNLESS NOTED OTHERWISE).
- C. ALL EQUIPMENT, DEVICES, FIXTURES REMOVED UNDER DEMOLITION SCOPE WILL BE FIRST OFFERED TO THE CITY FOR REFUSAL FOLLOWED BY CONTRACTOR AND FINALLY TO BE LEGALLY DISPOSED OF.
- D. FOR ALL EXISTING ELECTRICAL DEVICES, EQUIPMENT, ETC. THAT ARE TO BE REMOVED, REMOVE EXISTING CONDUIT, WIRING, ETC. BACK TO SOURCE.
- E. CO-ORDINATE FULLY WITH MECHANICAL FOR THE SEQUENCE OF DEMOLITION AND CONSTRUCTION. REFER TO MECHANICAL DRAWINGS FOR PHASING OF WORK.
- F. CO-ORDINATE WITH THE CITY PRIOR TO SHUT-DOWN OF EQUIPMENT.

**DEMOLITION KEY NOTES**

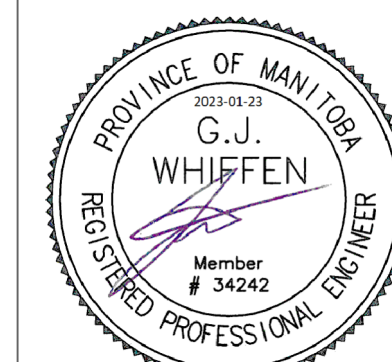
- 1. DISCONNECT AND REMOVE WIRING ASSOCIATED WITH EXISTING MOTOR FOR PUMP BIP-1 BACK TO "PANEL A" LOCATED IN ELECTRICAL ROOM 1-37. COORDINATE REMOVAL WITH MECHANICAL CONTRACTOR.
- 2. REMOVE EXISTING GENERAL PURPOSE SWITCH ASSOCIATED WITH BIP-1. PROVIDE BLANK COVER PLATE.
- 3. REMOVE EXISTING MOTOR OVERLOAD LOCATED IN STARTER ENCLOSURE ASSOCIATED WITH BIP-1. RE-USE RESET ADAPTER ACCESSORY FOR NEW INSTALLATION. TURNOVER DEVICE TO THE CITY. REFER TO NEW CONSTRUCTION FOR FURTHER INFORMATION.
- 4. BREAKER IN "PANEL A" ASSOCIATED WITH DEMOLISHED BIP-1 TO REMAIN AS SPARE. UPDATE PANEL DIRECTORY.
- 5. DISCONNECT AND REMOVE WIRING ASSOCIATED WITH EXISTING BOILER B-1 BACK TO EXISTING GENERAL PURPOSE SWITCH. EXISTING CIRCUIT TO REMAIN. COORDINATE REMOVAL WITH MECHANICAL CONTRACTOR.
- 6. DISCONNECT AND REMOVE WIRING ASSOCIATED WITH EXISTING BOILER B-1 DEVICES: LOW WATER CUTOFF (LWCO), AND HILIMIT SWITCH. COORDINATE REMOVAL WITH MECHANICAL CONTRACTOR.
- 7. EXISTING BOILER B-1 EMERGENCY SHUTDOWN SWITCH TO REMAIN. RE-USE SWITCH TO SHUT DOWN NEW BOILER. RECONFIGURE WIRING AS REQUIRED. REFER TO NEW CONSTRUCTION FOR FURTHER INFORMATION.



**KEY PLAN**  
SCALE: NTS

FILE NAME AND PATH: G:\PROJECTS\2022\2022-207 Terminal Garage Boiler Replacement\A\3 CAD\Rev\A\1 E101\_CAD\_1.dwg DATE PLOTTED: October 26, 2022 10:15:54 AM LAYOUT: E101 LAST SAVED BY: wsm

LETTER OR NUMBER	DESCRIPTION	BY	DDMMYY
0	ISSUED FOR CONSTRUCTION	GW	23/10/23



Project Title  
**WINNIPEG TRANSIT  
BRANDON GARAGE  
BOILER REPLACEMENT**

WINNIPEG MANITOBA

Drawing Title  
**PARTIAL MAIN FLOOR PLAN -  
ELECTRICAL -  
DEMOLITION**

Drawn By  
WPD

Checked By  
JWB

Approved By  
GW

Scale  
AS NOTED

Date  
OCTOBER 2022

Project No.  
22-267-01

Revision Number  
**0**

Drawing Number  
**E101**

Sheet Order  
2 OF 3