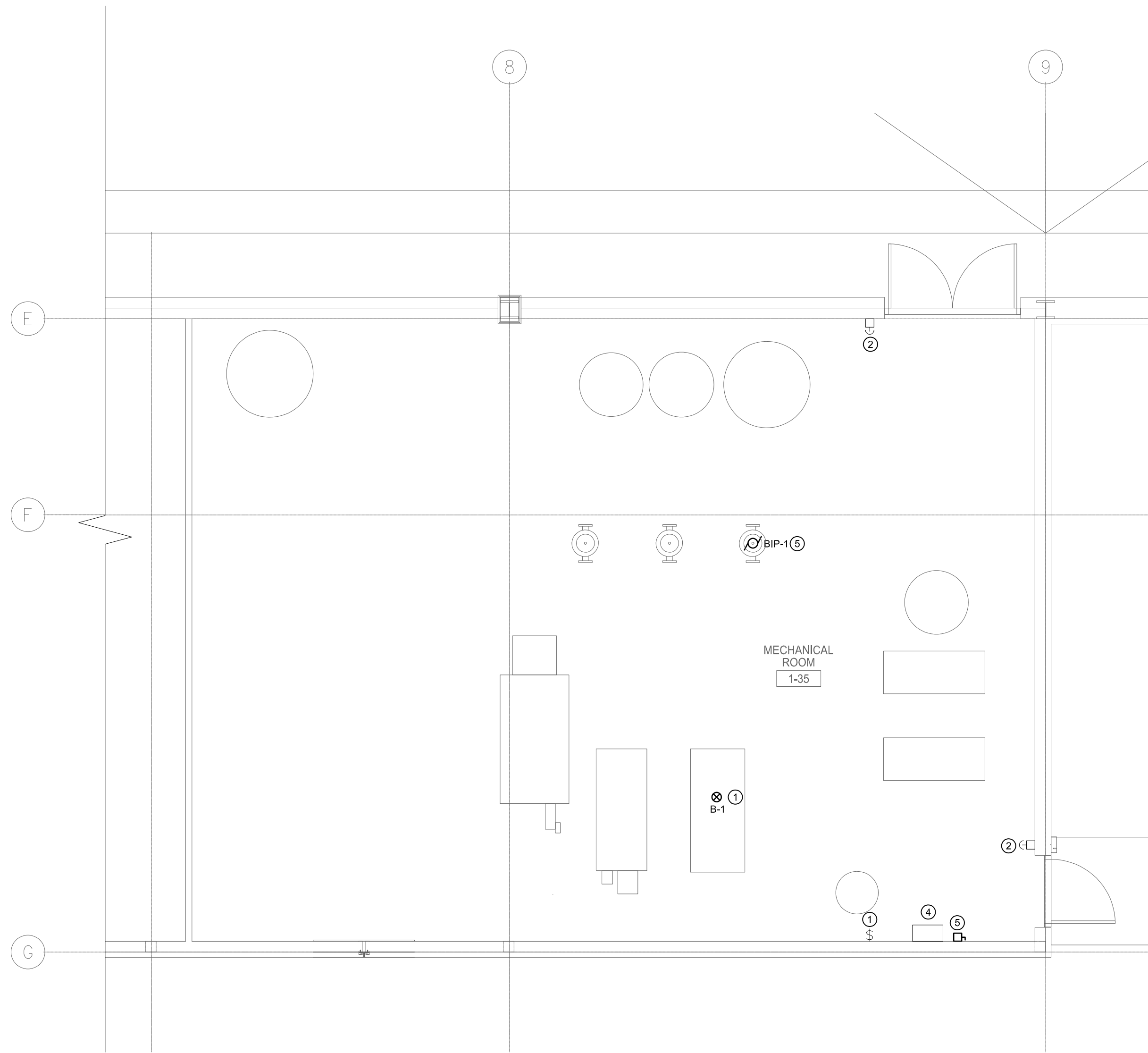


1 PARTIAL MAIN FLOOR PLAN - ELECTRICAL - NEW CONSTRUCTION PART A
SCALE: 1:50



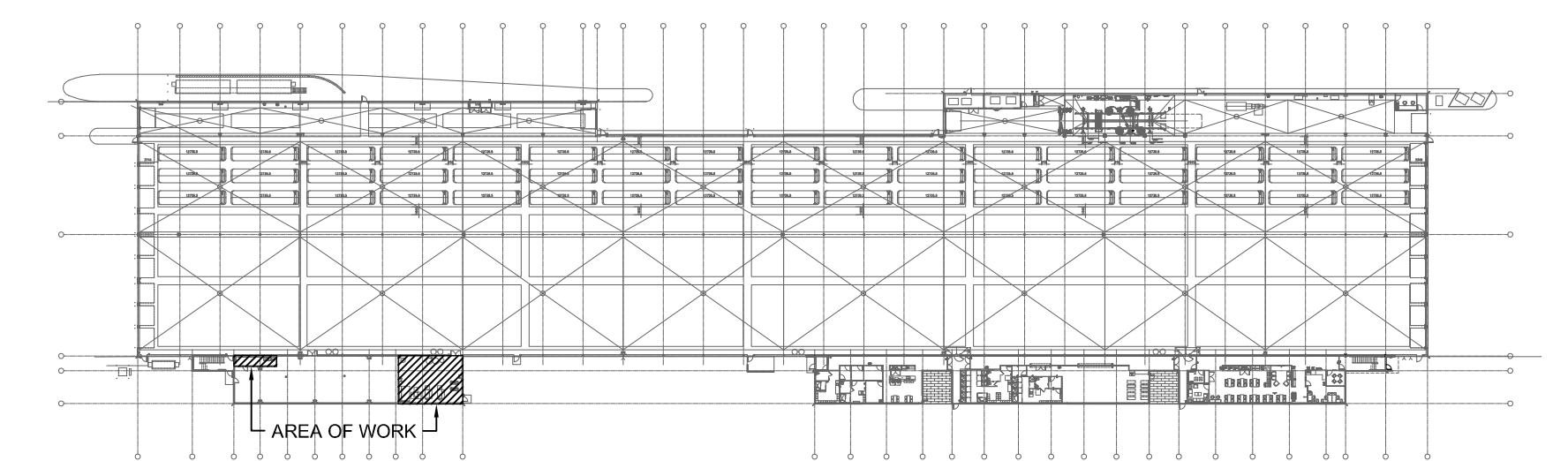
2 PARTIAL MAIN FLOOR PLAN - ELECTRICAL - NEW CONSTRUCTION PART B
SCALE: 1:50

GENERAL NOTES

- A. CONTRACTOR TO VISIT SITE DURING BID AND VERIFY ALL EXISTING SERVICES ON SITE PRIOR TO SUBMITTING BID. REPORT ANY DISCREPANCIES TO CONTRACT ADMINISTRATOR DURING BID PERIOD.
- B. CONTRACTOR SHALL BE RESPONSIBLE FOR COORDINATING EXACT LAYOUT, ROUTING, ETC. VERIFY EXISTING SERVICES ON SITE.
- C. VERIFY ALL EXISTING EQUIPMENT BEING RE-USED ARE WORKING PRIOR TO INSTALLATION. SUPPLY NEW EQUIPMENT IF NECESSARY.
- D. CONTRACTOR TO DETERMINE EXACT CABLE ROUTES ON SITE. WHERE POSSIBLE FOLLOW EXISTING CABLE ROUTES THROUGH BUILDING. RE-USE EXISTING WALL OPENINGS AND PENETRATIONS TO ROUTE CABLES. PROVIDE NEW PENETRATIONS WHERE EXISTING CANNOT BE RE-USED. SEAL ALL PENETRATIONS.
- E. SEAL ALL PENETRATIONS THROUGH FIRE RATED WALLS WITH FIRE STOP MATERIALS AS REQUIRED TO MAINTAIN ASSEMBLY RATING.
- F. CONTRACTOR TO COORDINATE WITH MECHANICAL FOR SEQUENCE OF DEMOLITION AND CONSTRUCTION.
- G. COORDINATE WITH THE CITY PRIOR TO SHUT DOWN OF EQUIPMENT.
- H. PROVIDE LIQUID TIGHT CONNECTORS ON ALL CONNECTIONS.
- I. WHERE RELOCATION OF EQUIPMENT IS SHOWN (FIRE ALARM DEVICES, MECHANICAL EQUIPMENT ETC.), EXTEND WIRE AND CONDUIT AS NECESSARY.
- J. FINAL CONNECTIONS TO EQUIPMENT AND INTER-CONNECTIONS BETWEEN EQUIPMENT WHERE NECESSARY ARE TO BE MADE BY ELECTRICAL CONTRACTOR.
- K. CONFIRM ALL EQUIPMENT CONNECTIONS AND ELECTRICAL REQUIREMENTS WITH EQUIPMENT SUPPLIER PRIOR TO ROUGH-IN. MAKE ADJUSTMENTS AND INSTALL AS PER SUPPLIERS REQUIREMENTS AT NO ADDITIONAL CHARGE.
- L. ALL CONTROL WIRING BY OTHERS.
- M. PATCH AND REPAIR SURFACES AS REQUIRED.

KEY NOTES

- 1. NEW BOILER B-1 PROVIDED BY MECHANICAL. ELECTRICAL CONTRACTOR TO WIRE AND CONNECT BOILER TO EXISTING GENERAL PURPOSE SWITCH.
- 2. RE-WIRE AND CONNECT EXISTING BOILER EMERGENCY SHUT DOWN SWITCH TO NEW BOILER B-1 AS REQUIRED. VERIFY OPERATION AFTER INSTALLATION.
- 3. PROVIDE NEW 15A-3P BREAKER LOCATED IN "PANEL 100" FOR NEW MOTOR ASSOCIATED WITH BIP-1. BREAKER TO MATCH EXISTING IN ALL RESPECTS. UPDATE PANEL DIRECTORY. REFER TO SINGLE LINE DIAGRAM FOR FURTHER DETAILS.
- 4. PROVIDE WIRING, CONDUIT, ETC. TO CONNECT NEW 15A-3P BREAKER TO EXISTING STARTER. APPROXIMATE DISTANCE IS 35 METRES. REFER TO SINGLE LINE DIAGRAM FOR FURTHER DETAILS.
- 5. PROVIDE NEW ALLEN-BRADLEY OVERLOAD RELAY 193-1EEDB, OR APPROVED EQUIVALENT. TO BE LOCATED IN STARTER ENCLOSURE ASSOCIATED WITH BIP-1. RE-USE RESET ADAPTER FOR EXTERNAL RESET. ADJUST TRIP SETTING AS PER GSA C22.1 RULE 28-306.
- 6. PROVIDE WIRING, CONDUIT, ETC. TO CONNECT NEW MOTOR FOR BIP-1 SUPPLIED BY MECHANICAL TO EXISTING STARTER. PROVIDE DISCONNECT SWITCH.



KEY PLAN
SCALE: NTS

FILE NAME AND PATH: G:\PROJECTS\2022\2022-2077 Termal Brandon Garage Boiler Replacement\AUS Layouts\New\AUS E102_OA_1.mwg
LAST SAVED BY: wsm
DATE PLOTTED: October 26, 2022 10:15:54 AM

| | | | | | | | | | | |
|------------------|-------------------------|----|----------|---|--|--|--|---|--------------------------|-------------------------------|
| 0 | ISSUED FOR CONSTRUCTION | GW | 23/01/23 | <p>SMS Engineering Ltd. Certificate of Authorization No. 166</p> | <p>G.J. WHIFFEN REGISTERED PROFESSIONAL ENGINEER Member # 34242</p> | <p>SMS Engineering 770 Bradford Street Winnipeg, Canada (204) 775-0291 smseng.com</p> | <p>Project Title WINNIPEG TRANSIT BRANDON GARAGE BOILER REPLACEMENT</p> | <p>Drawing Title PARTIAL MAIN FLOOR PLAN - ELECTRICAL - NEW CONSTRUCTION</p> | Drawn By WPD | Revision Number 0 |
| LETTER OR NUMBER | DESCRIPTION | BY | DDMMYY | | | | | | Checked By JWB | Drawing Number E102 |
| | | | | | | | | | Approved By GW | Scale AS NOTED |
| | | | | | | | | | Date OCTOBER 2022 | Sheet Order 3 OF 3 |
| | | | | | | | | | Project No. 22-267-01 | |