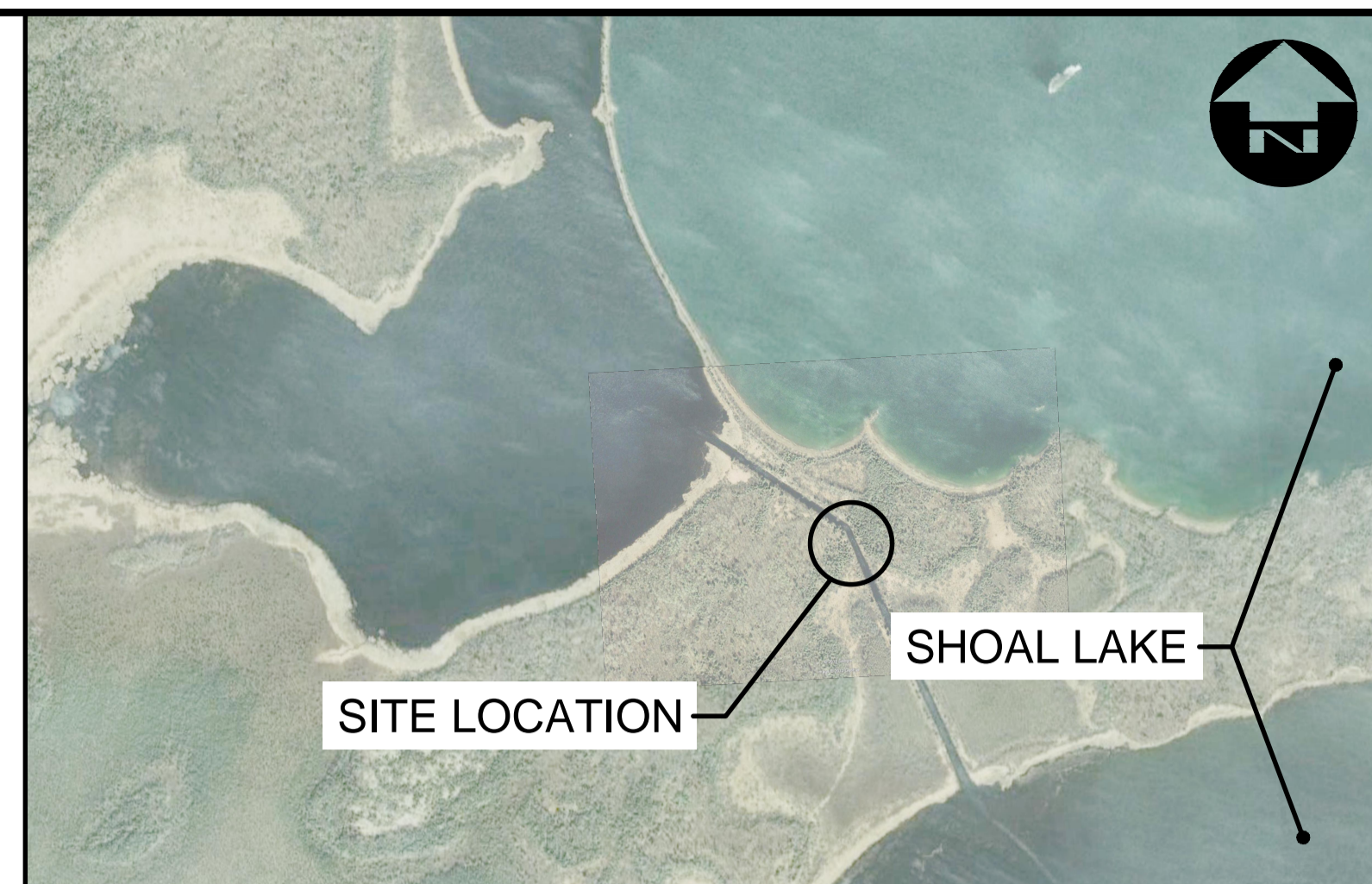


PLAN
1:200



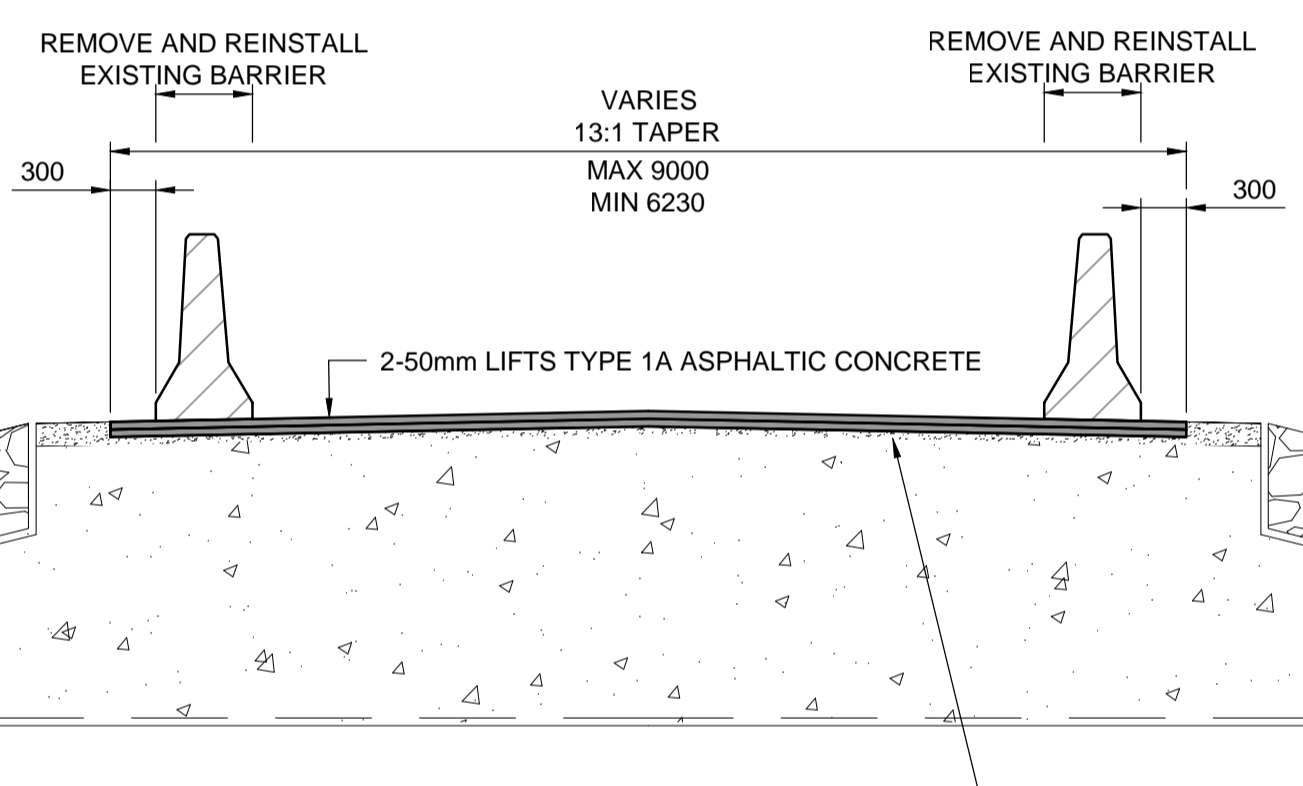
LOCATION PLAN
NTS

NOTES:

- CONSTRUCTION INFORMATION**
- FOR CONSTRUCTION DRAWINGS AND SPECIFICATIONS, INCLUDING DESIGN DATA, REFER TO CITY OF WINNIPEG BID OPPORTUNITY 114-2014.
 - CONTRACTOR TO MAKE REASONABLE EFFORT TO LIMIT THE DISRUPTION OF EXISTING NATURAL VEGETATION AND SLOPE STABILIZATION.
 - CONTRACTOR TO MAKE REASONABLE EFFORT TO LIMIT THE DEBRIS THAT FALLS INTO THE WATERWAY DURING DECK REPLACEMENT WORKS.
- TRAFFIC STAGING**
- CONTRACTOR TO LIMIT DISRUPTIONS TO TRAFFIC DURING PEAK HOURS OF ROADWAY OPERATION.
 - CONTRACTOR TO COMPLETE ALL IN-PROGRESS WORKS AT THE END OF THE WORKING DAY. BRIDGE AND ROADWAY SHALL BE FULLY OPEN TO TRAFFIC DURING EVENING AND OVERNIGHT PERIODS.
 - CONTRACTOR SHALL ALLOW PASSENGER VEHICLES TO CROSS THE BRIDGE AT ONE HOUR INTERVALS DURING CONSTRUCTION ACTIVITIES.
 - CONTRACTOR SHALL ALLOW IMMEDIATE ACCESS TO EMERGENCY VEHICLES IF ACCESS ACROSS THE BRIDGE IS REQUIRED.
 - CONTRACTOR SHALL NOTIFY STAKEHOLDERS OF THEIR EXPECTED START/END DATE AND DURATION OF CONSTRUCTION AT LEAST 48 HOURS IN ADVANCE OF MOBILIZATION.

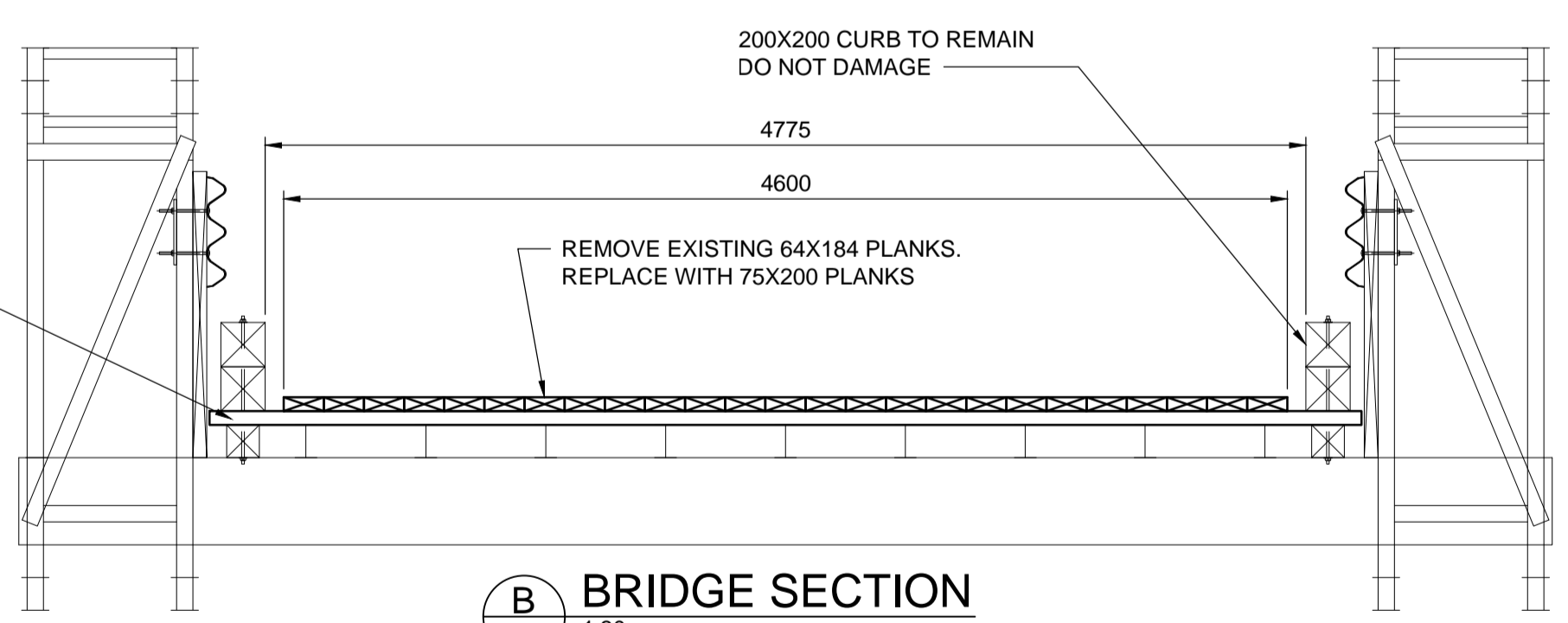


HAZARD MARKER INSTALLATION

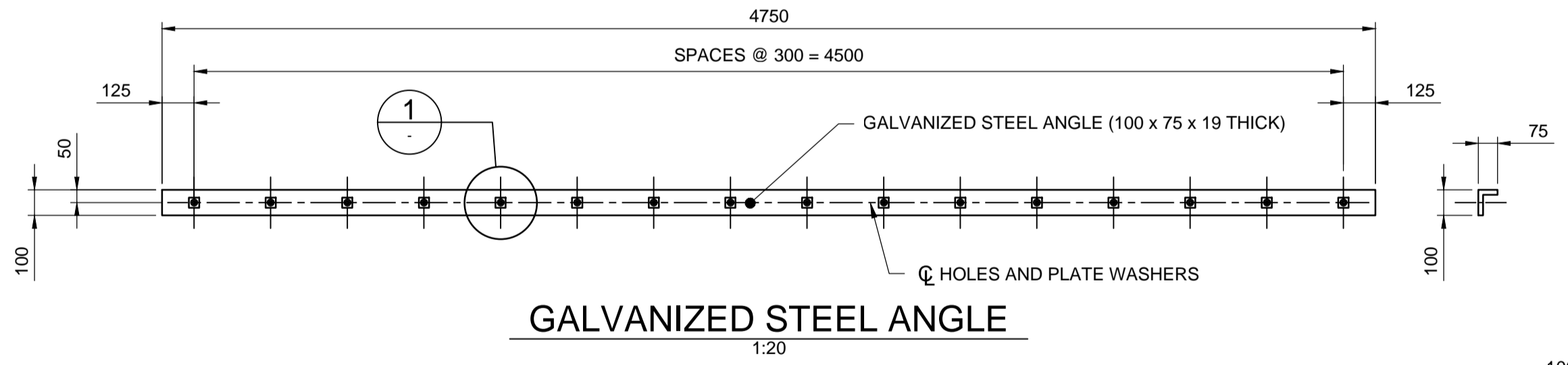


A APPROACH SECTION
1:50

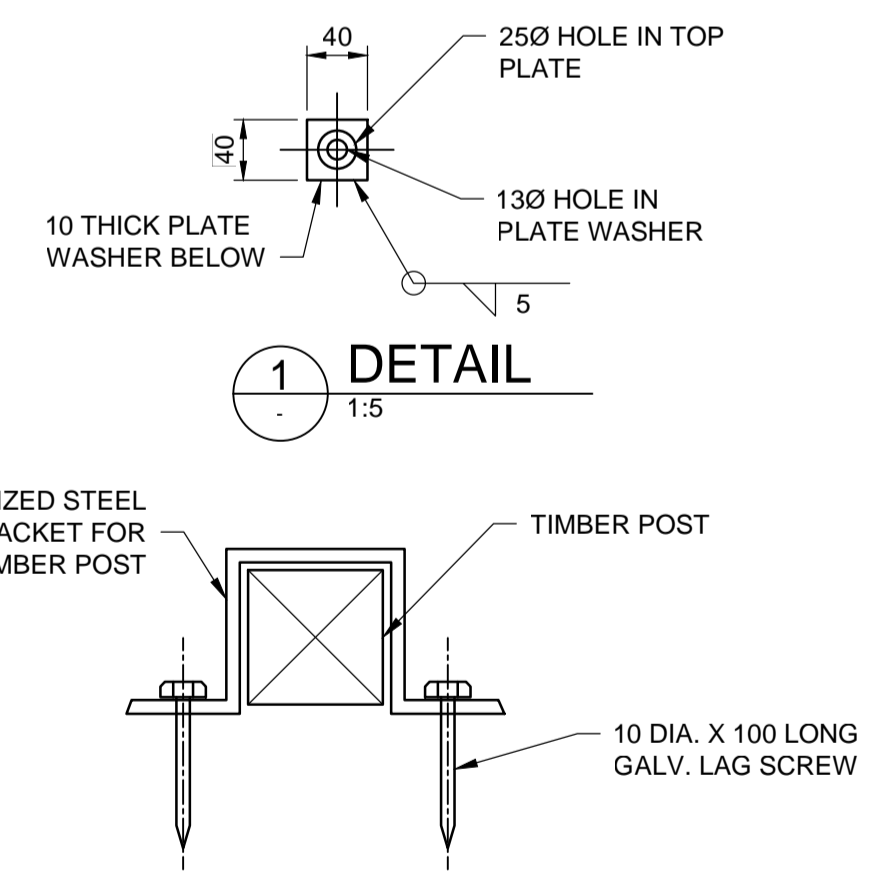
REMOVE 100mm OF EXISTING TRAFFIC GRAVEL AND PREPARE BASE IN ACCORDANCE WITH SPECIFICATIONS. BLEND ALL REMOVED GRAVEL INTO EXISTING ROADWAY GRAVEL AND RE-GRADE.



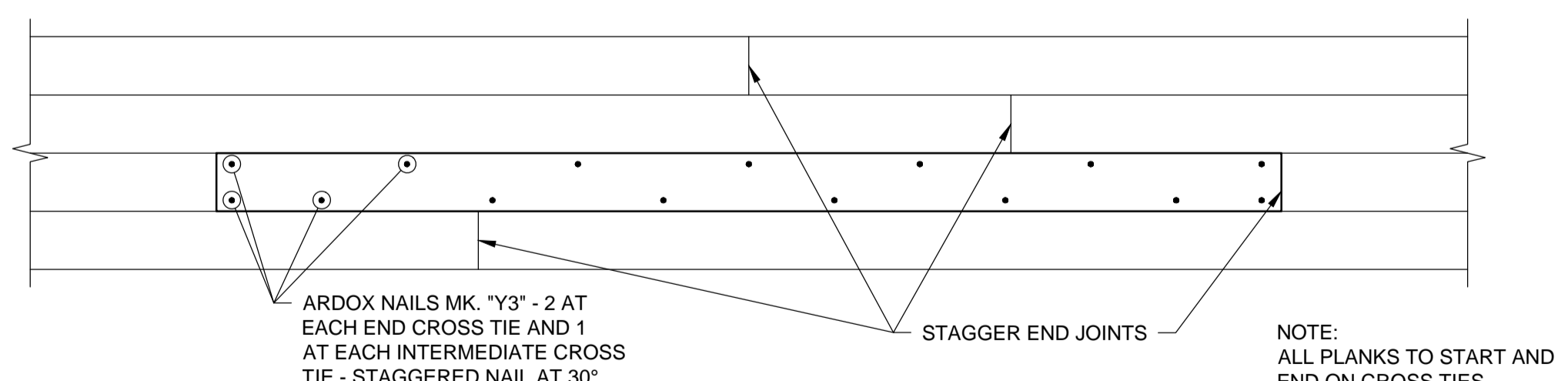
B BRIDGE SECTION
1:30



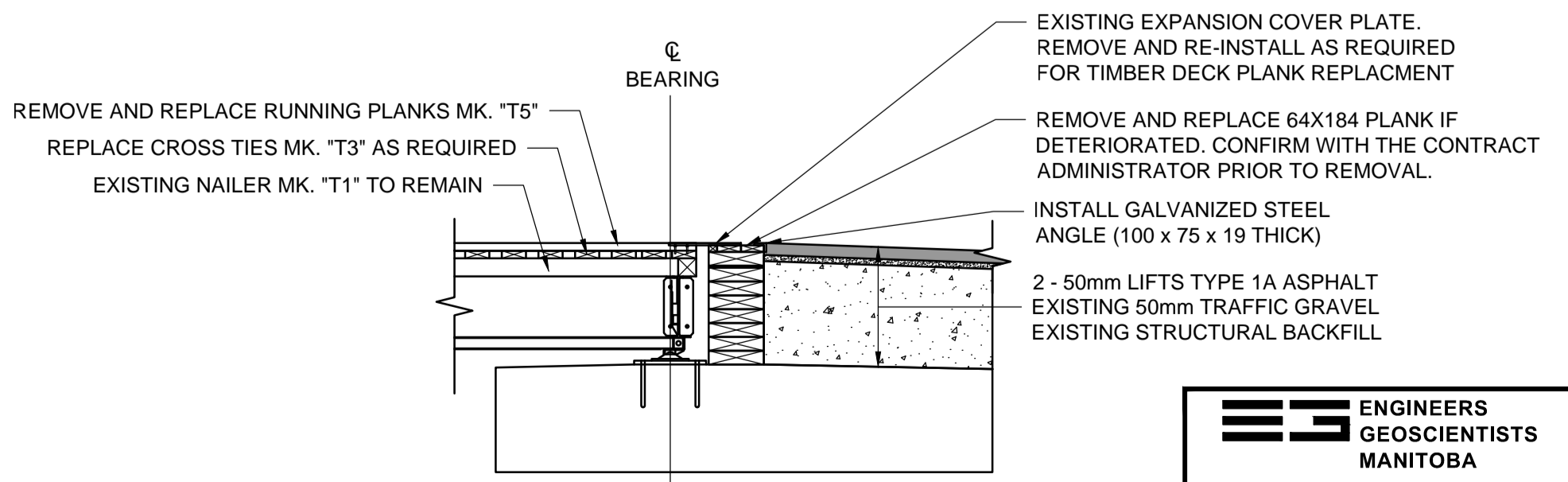
GALVANIZED STEEL ANGLE
1:20



POST BRACKET DETAIL
1:5



RUNNING PLANK NAILING PATTERN - PARTIAL PLAN
1:20



C APPROACH SECTION
1:50

ENGINEERS GEOSCIENTISTS MANITOBA
Certificate of Authorization
Dillon Consulting Limited (MB)
No. 1789 Date: 2022/12/20

B.M. ELEV.	DESIGNED BY GCL	ENGINEER'S SEAL	ENGINEER'S SEAL
	DRAWN BY MJP		
	CHECKED BY MDG		
	APPROVED BY GCL	CONSULTANT PROJECT NUMBER 22-3230	
	HOR. SCALE --	RELEASED FOR CONSTRUCTION	
	VERTICAL --	DATE: 2022/12/20	
NO. REVISIONS	DATE	BY	DATE

THE CITY OF WINNIPEG
WATER AND WASTE DEPARTMENT

REPAIRS TO FREEDOM ROAD BRIDGES AND ASSOCIATED ROADWORKS

FALCON RIVER DIVERSION BRIDGE DECK PLANK REPLACEMENT AND APPROACH PAVING

CITY DRAWING NUMBER --- SHEET 02 OF 03

CONSULTANT DRAWING NUMBER 22-3230-02

C:\pwworking\directory\projects\2022\dillon_40mg\tms01529\223230_GENERAL_ARRANGEMENT.dwg