

LOCATION PLAN
NTS

NOTES

- CONSTRUCTION INFORMATION**
- FOR CONSTRUCTION DRAWINGS AND SPECIFICATIONS, INCLUDING DESIGN DATA, REFER TO CITY OF WINNIPEG BID OPPORTUNITY 114-2014.
 - CONTRACTOR TO MAKE REASONABLE EFFORT TO LIMIT THE DISRUPTION OF EXISTING NATURAL VEGETATION AND SLOPE STABILIZATION.
- TRAFFIC STAGING**
- CONTRACTOR TO LIMIT DISRUPTIONS TO TRAFFIC DURING PEAK HOURS OF ROADWAY OPERATION.
 - CONTRACTOR TO COMPLETE ALL IN-PROGRESS WORKS AT THE END OF THE WORKING DAY. BRIDGE AND ROADWAY SHALL BE FULLY OPEN TO TRAFFIC DURING EVENING AND OVERNIGHT PERIODS.
 - CONTRACTOR SHALL ALLOW PASSENGER VEHICLES TO CROSS THE BRIDGE AT ONE HOUR INTERVALS DURING CONSTRUCTION ACTIVITIES.
 - CONTRACTOR SHALL ALLOW IMMEDIATE ACCESS TO EMERGENCY VEHICLES IF ACCESS ACROSS THE BRIDGE IS REQUIRED.
 - CONTRACTOR SHALL NOTIFY STAKEHOLDERS OF THEIR EXPECTED START/END DATE AND DURATION OF CONSTRUCTION AT LEAST 48 HOURS IN ADVANCE OF MOBILIZATION.

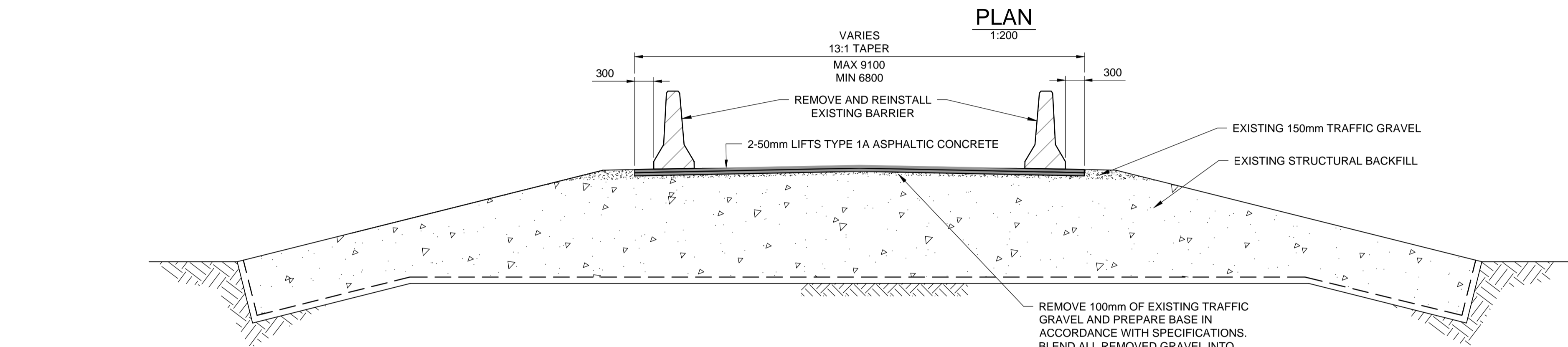
GPS INFORMATION

COORDINATES PROVIDED TAKEN FROM SURVEY DATA TYING INTO THE SHOAL LAKE AQUEDUCT CONTROL SURVEY WHICH IS REFERENCED TO ZONE 14 N, ACTUAL LOCATION OF BRIDGE IS IN ZONE 15 N.

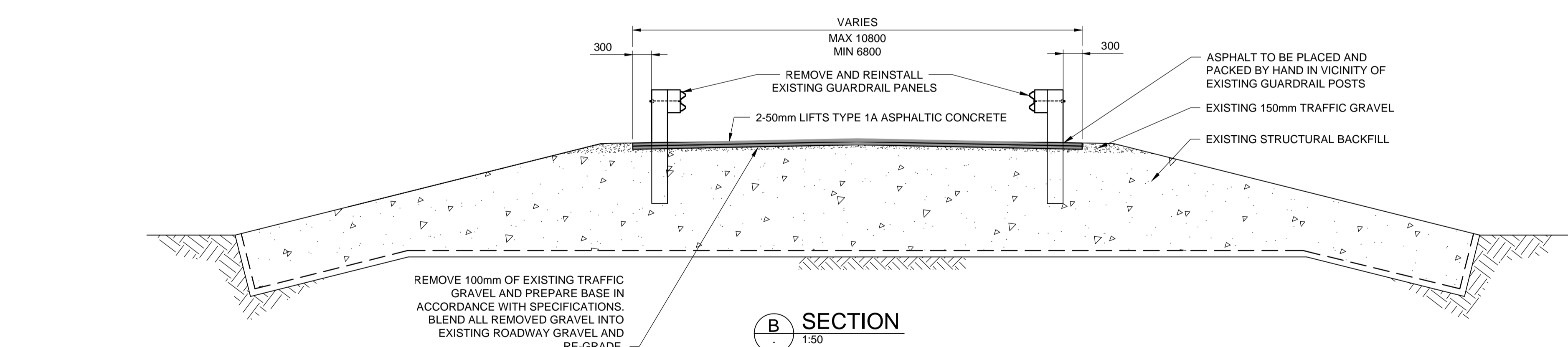
- UTM COORDINATES: AT OF BRIDGE 14 N EASTING = 767632.66, NORTHING = 5503438.74
- LATITUDE = 49°37'26.83"N, LONGITUDE = 95°17'38.46"W

BRIDGE INFORMATION

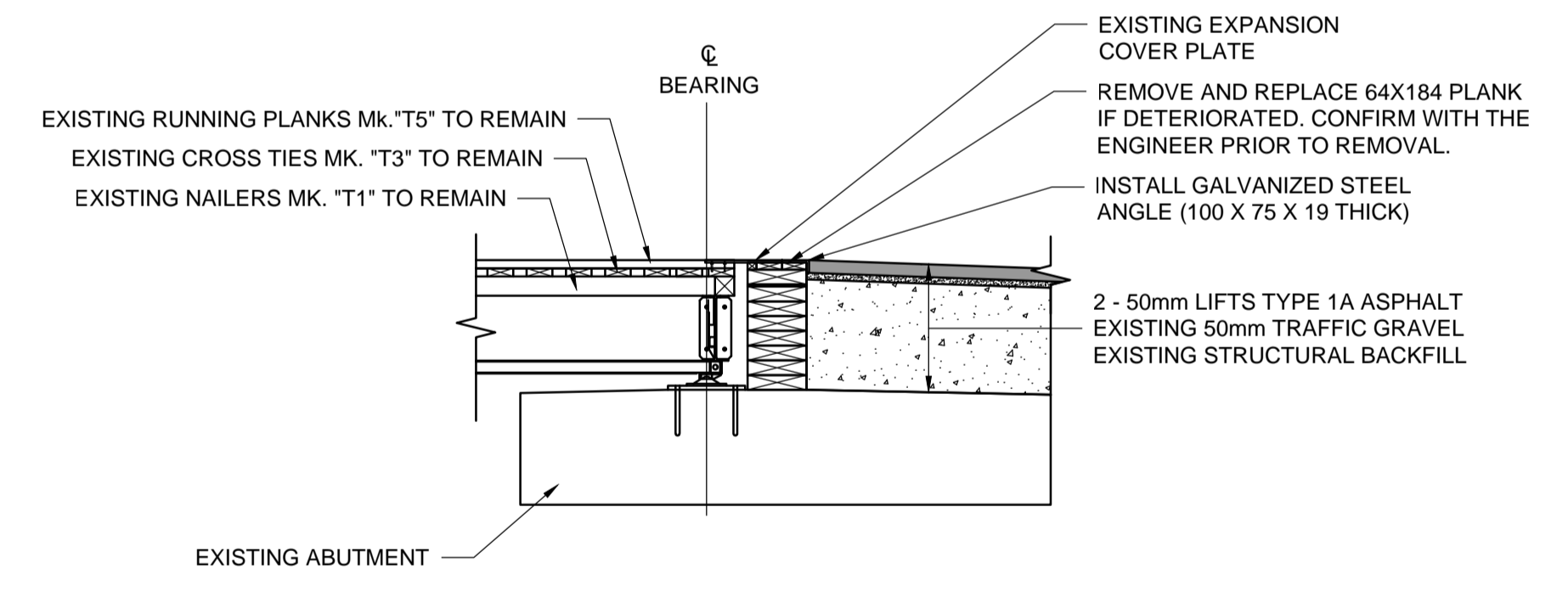
- BRIDGE DIMENSIONS: 33.528 m LONG (110'), 5.79 m WIDE (19'-0") INSIDE TRUSS TO INSIDE TRUSS.



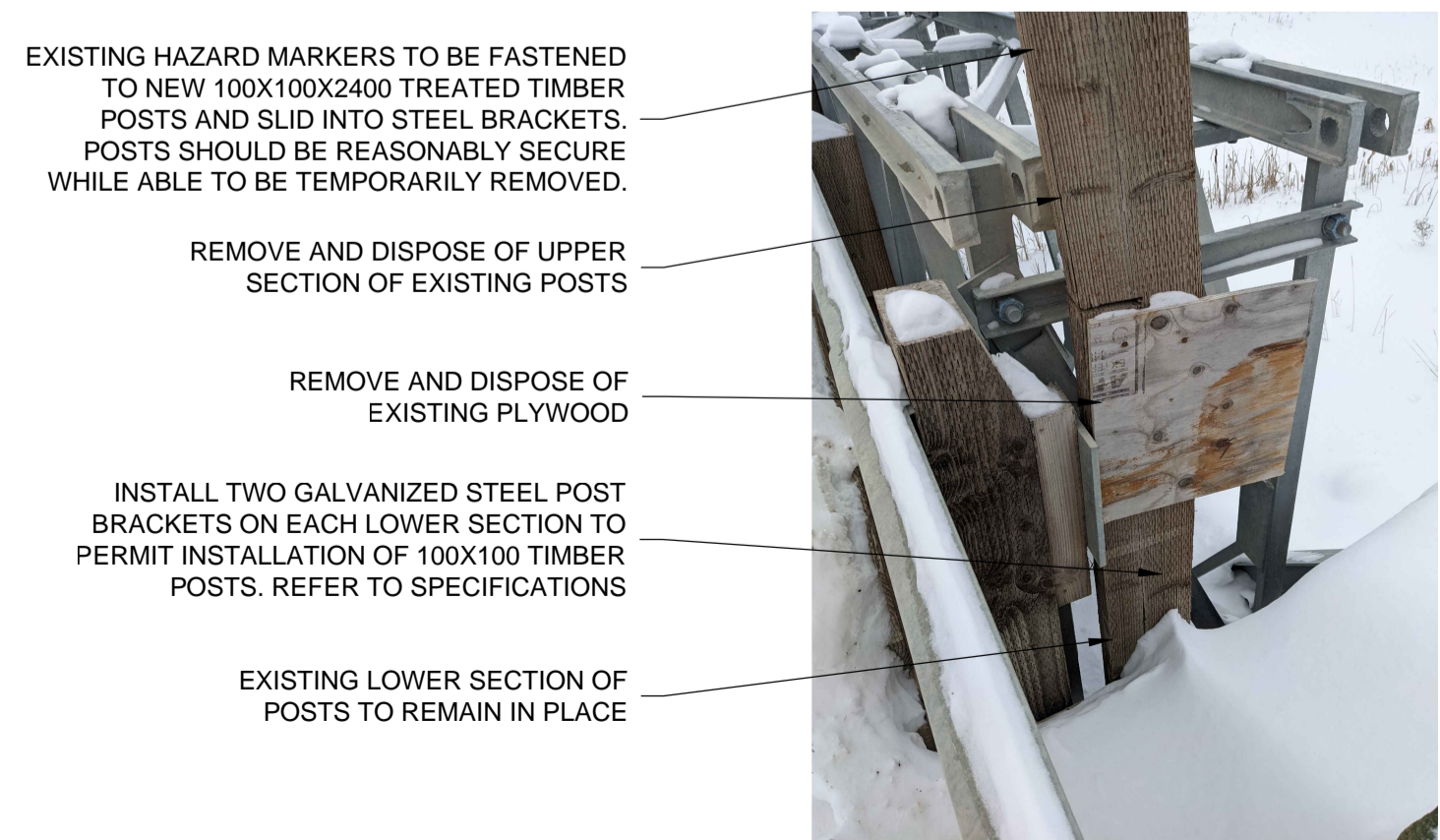
SECTION A
1:50



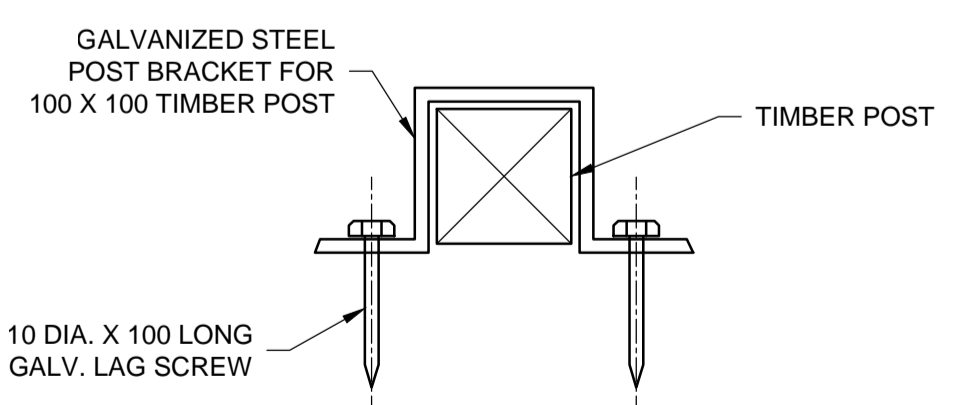
SECTION B
1:50



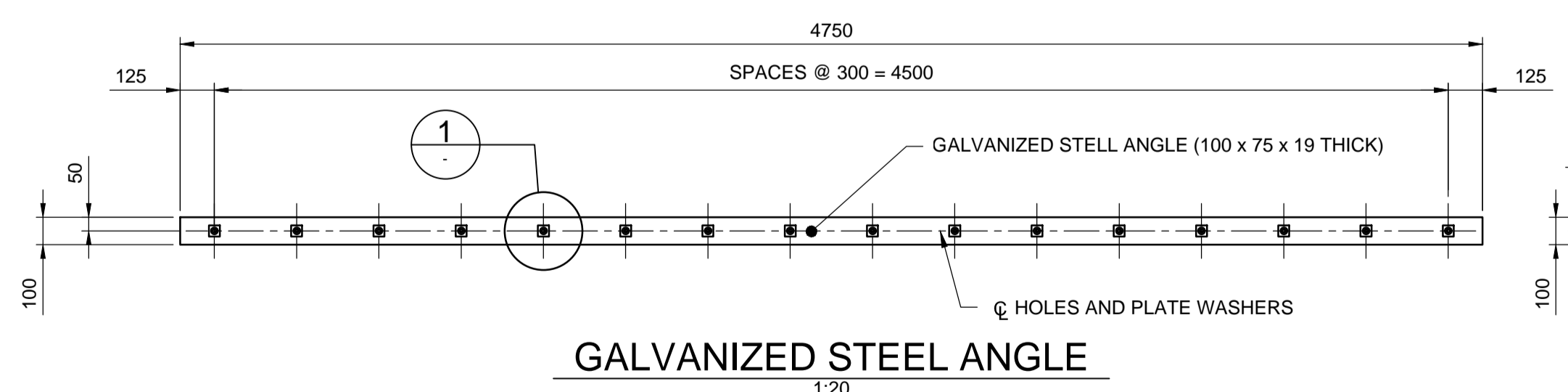
SECTION C APPROACH SECTION
1:50 TYPICAL AT BOTH ENDS



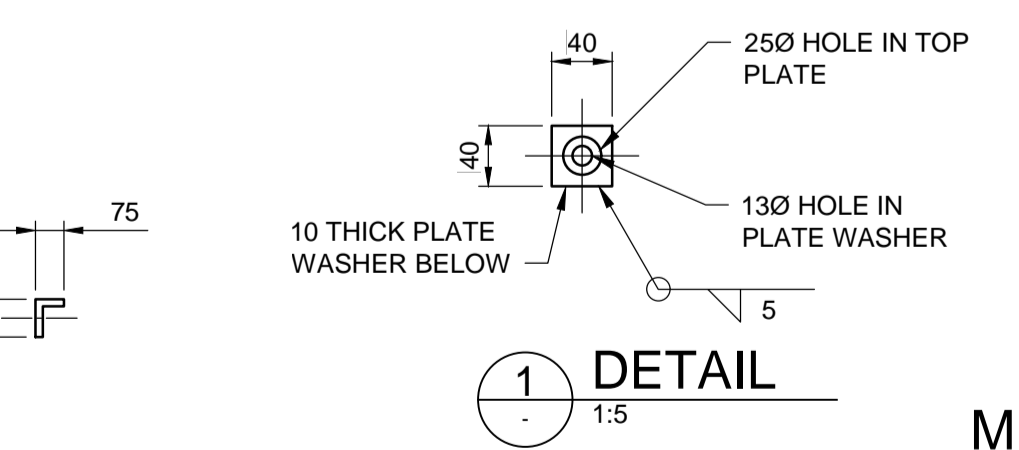
HAZARD MARKER INSTALLATION



POST BRACKET DETAIL
1:5



GALVANIZED STEEL ANGLE
1:20



DETAIL 1
1:5

METRIC

WHOLE NUMBERS INDICATE MILLIMETRES
DECIMALIZED NUMBERS INDICATE METRES

B.M. ELEV.		DESIGNED BY: GCL		ENGINEER'S SEAL	ENGINEER'S SEAL			
		DRAWN BY: MJP			THE CITY OF WINNIPEG WATER AND WASTE DEPARTMENT			
		CHECKED BY: MDG			REPAIRS TO FREEDOM ROAD BRIDGES AND ASSOCIATED ROADWORKS		CITY DRAWING NUMBER: ---	
		APPROVED BY: GCL			SHOAL LAKE AQUEDUCT BRIDGE APPROACH PAVING		SHEET 03 OF 03	
0 ISSUED FOR TENDER 22/12/20 GCL		HOR. SCALE: --	RELEASED FOR CONSTRUCTION		CONSULTANT PROJECT NUMBER: 22-3230		CONSULTANT DRAWING NUMBER: 22-3230-03	
NO. REVISIONS		DATE	DATE: 2022/12/20					

C:\pwworking\directory\projects\2022\dillon_40mg\mns01529\223230_GENERAL_ARRANGEMENT_SUA.dwg