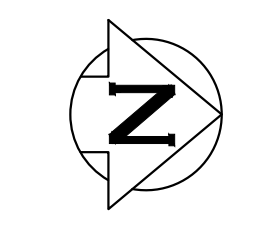


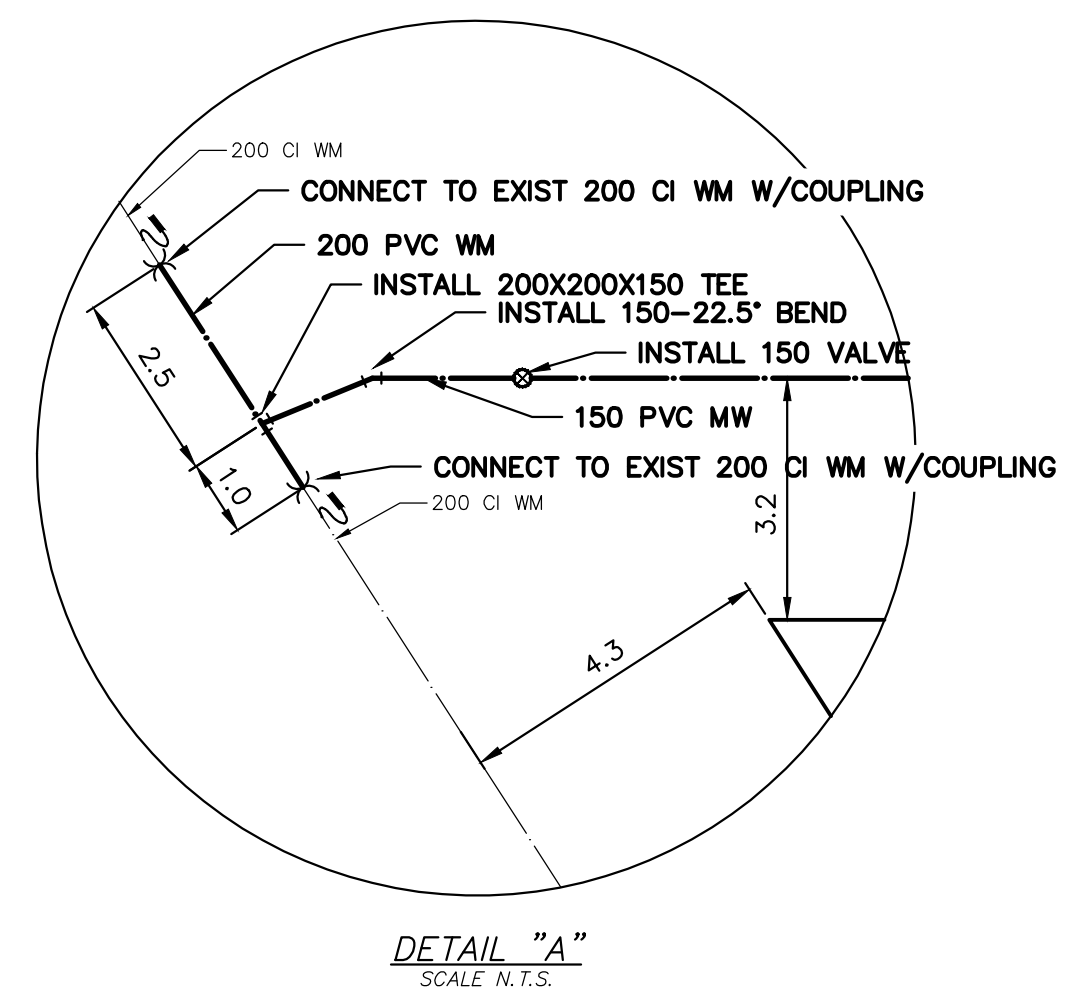
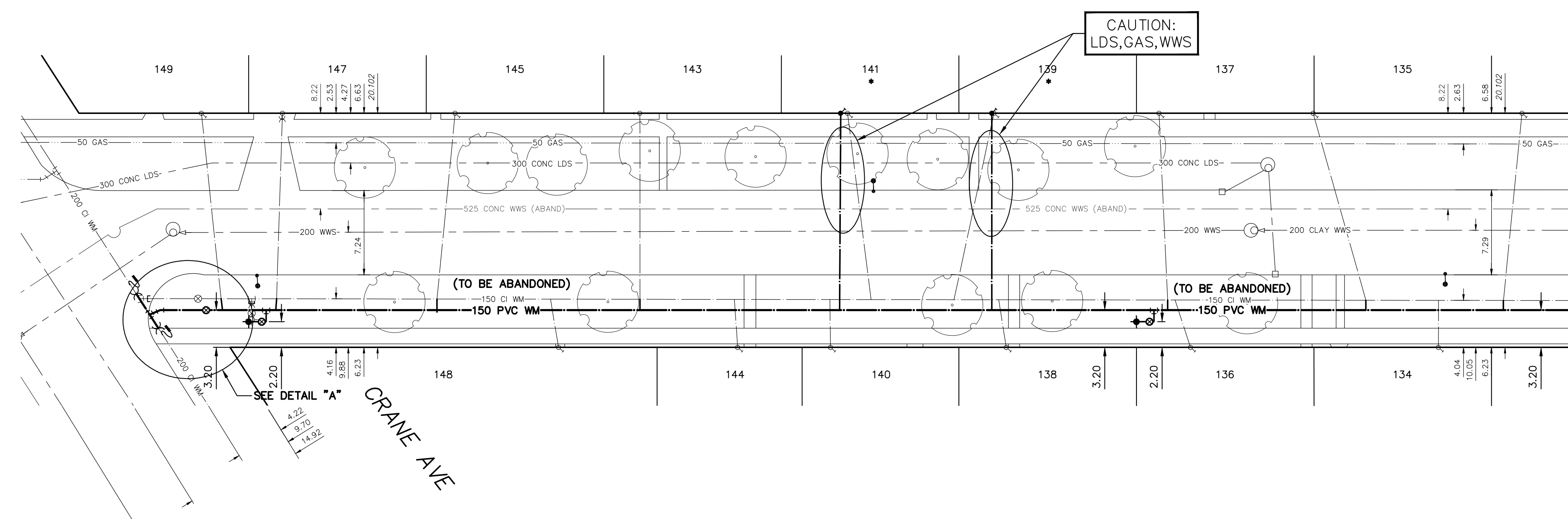
WATER SERVICE INFORMATION					
ADDRESS	SIZE (mm) MATERIAL (STREET)	SIZE (mm) MATERIAL (PROP.)	SHORT & LONG MEASUREMENT	LINEAR DISTANCE (1) CORP LOCATION (2)	REMARKS
149 BUXTON RD	20	CU	6.28 NSL HSE	0.7 S OF S/C	RECONNECT SERVICE
148 BUXTON RD	20	CU	2.414 NSL CRANE AVE	1.8 N OF S/C	RECONNECT SERVICE
147 BUXTON RD	20	CU	28.195 NSL CRANE AVE	0.5 S OF S/C	RECONNECT SERVICE
146 BUXTON RD	20	CU	0.65 NSL HSE	1.5 W OF S/C	RECONNECT SERVICE
145 BUXTON RD	20	CU	4.487 NSL CRANE AVE	0.4 S OF S/C	RECONNECT SERVICE
144 BUXTON RD	20	CU	1.10 NSL HSE	0.4 S OF S/C	RECONNECT SERVICE
143 BUXTON RD	20	CU	19.312 NSL CRANE AVE	OPP OF S/C	RECONNECT SERVICE
142 BUXTON RD	20	CU	5.53 NSL HSE	0.4 S OF S/C	RECONNECT SERVICE
141 BUXTON RD	20	CU	43.567 NSL CRANE AVE	1.9 N OF S/C	RENEW TO R W/20 CU PREVIOUSLY FROZEN
140 BUXTON RD	20	CU	35.225 NSL CRANE AVE	OPP OF S/C	RECONNECT SERVICE
139 BUXTON RD	20	CU	51.282 NSL CRANE AVE	3.5 S OF S/C	RENEW TO R W/20 CU PREVIOUSLY FROZEN
138 BUXTON RD	20	CU	1.46 NSL HSE	0.7 S OF S/C	RECONNECT SERVICE
137 BUXTON RD	20	CU	66.563 NSL CRANE AVE	0.7 W OF S/C	RECONNECT SERVICE
136 BUXTON RD	20	CU	1.15 NSL HSE	0.7 W OF S/C	RECONNECT SERVICE
135 BUXTON RD	20	CU	79.770 NSL CRANE AVE	1.4 S OF S/C	RECONNECT SERVICE
134 BUXTON RD	20	CU	2.50 NSL HSE	4.6 N OF S/C	RECONNECT SERVICE
133 BUXTON RD	20	CU	93.020 NSL CRANE AVE	OPP OF S/C	RECONNECT SERVICE
132 BUXTON RD	20	CU	7.65 NSL HSE	OPP OF S/C	RECONNECT SERVICE
131 BUXTON RD	20	CU	103.695 NSL CRANE AVE		

\* SERVICES TO BE RENEWED TO R. ALL OTHERS TO BE RECONNECTED

NOTE: CHAINAGES SHOWN ARE ALONG E. R. OF BUXTON RD



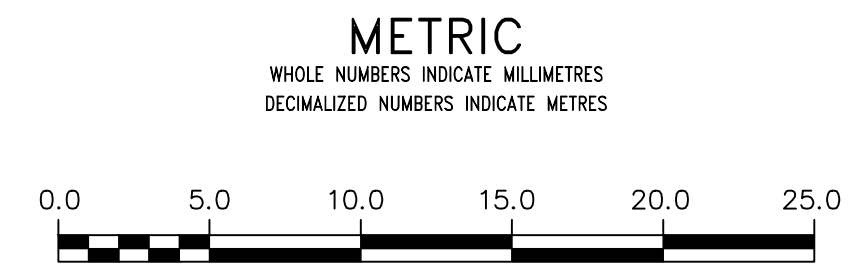
BUXTON ROAD



MATCHLINE 2+15.00  
SEE D-16442

FOR INDEX SEE D-16440

NOTE: ALL VALVES TO BE INSTALLED CLOCKWISE TO CLOSE

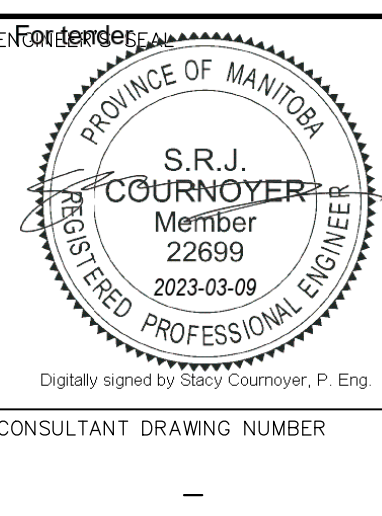


**WARNING**  
IF POWER EQUIPMENT OR EXPLOSIVES ARE TO BE USED FOR EXCAVATION ON THIS PROJECT THE CONTRACTOR MUST:  
1) NOTIFY THE GAS COMPANY OF THE PROPOSED LOCATION OF EXCAVATION.  
2) TAKE PRECAUTION TO AVOID DAMAGE TO GAS COMPANY INSTALLATIONS.  
SEE PROVINCIAL REGULATION 210/72 FOR DETAILS

**LOCATION APPROVED UNDERGROUND STRUCTURES**  
SUPV. U/G STRUCTURES COMMITTEE DATE  
NOTE:  
LOCATION OF UNDERGROUND STRUCTURES AS SHOWN ARE BASED ON THE BEST INFORMATION AVAILABLE BUT NO GUARANTEE IS GIVEN THAT ALL EXISTING UTILITIES ARE SHOWN OR THAT THE GIVEN LOCATIONS ARE EXACT. CONFIRMATION OF EXISTENCE AND EXACT LOCATION OF ALL UTILITIES MUST BE OBTAINED FROM THE INDIVIDUAL UTILITIES BEFORE PROCEEDING WITH CONSTRUCTION.

VERTICAL DATUM: CGVD28 (HT2.0 Geoid)			
HORIZONTAL DATUM: NAD83 (June 1990), Zone 14			
NO.	REVISIONS	DATE	BY

DESIGNED BY	RG	CHECKED BY	SC
DRAWN BY	RS	APPROVED BY	KZ
SCALE:		RELEASED FOR CONSTRUCTION	
HORIZONTAL	1:250		
VERTICAL	1:50		
DATE	2023 03 03	DATE	Mar 9, 2023



**THE CITY OF WINNIPEG**  
WATER AND WASTE DEPARTMENT  
ENGINEERING DIVISION

2023 WATER MAIN RENEWALS  
CONTRACT 12  
BUXTON ROAD  
CRANE AVENUE TO  
115 N OF CRANE AVENUE

SHEET 3 OF 13  
CITY DRAWING NUMBER  
D-16441