

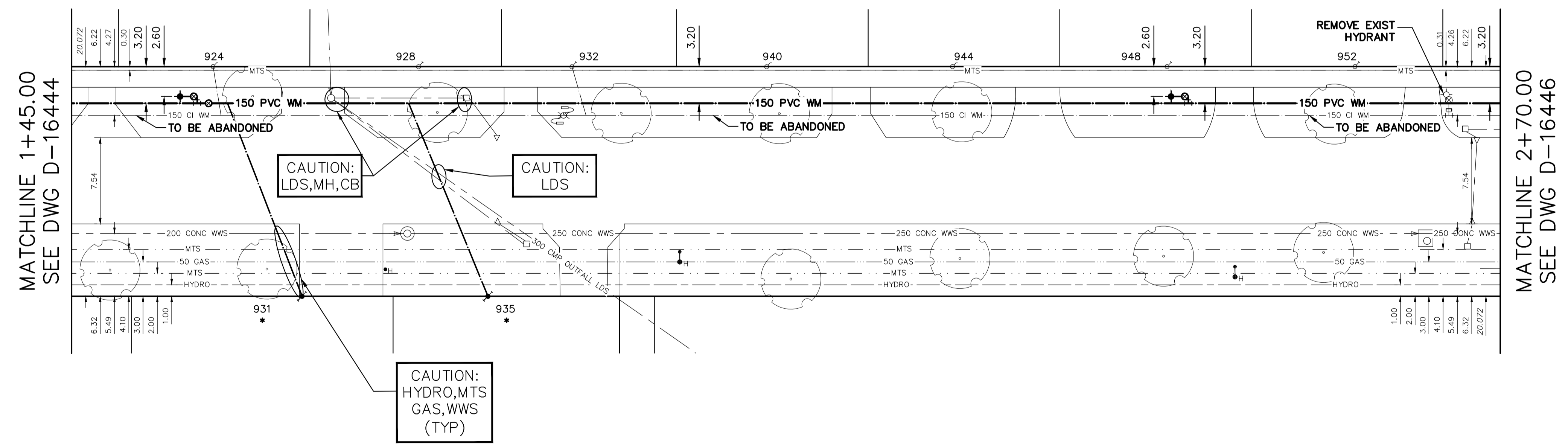
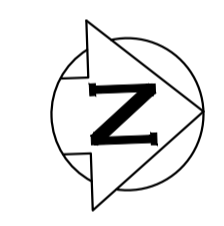
WATER SERVICE INFORMATION

ADDRESS	SIZE (mm) MATERIAL (STREET)	SIZE (mm) MATERIAL (PROP.)	SHORT & LONG MEASUREMENT	CORP LOCATION	REMARKS
924 ISBISTER ST RESIDENTIAL	20 CU	20 CU	4.99 SNL BLDG 125.570>NNL HAMILTON AVE	0.7 N OF S/C	RECONNECT SERVICE
928 ISBISTER ST RESIDENTIAL	- CU	20 CU	6.00 NSL BLDG 143.580>NNL HAMILTON AVE	-	RECONNECT SERVICE
931 ISBISTER ST RESIDENTIAL	- CU	20 CU	6.01 SNL BLDG 136.820>NNL HAMILTON AVE	-	RENEW TO R W/20 CU PREVIOUSLY FROZEN
932 ISBISTER ST RESIDENTIAL	20 CU	20 CU	2.90 NSL BLDG 156.970>NNL HAMILTON AVE	1.2 N OF S/C	RECONNECT SERVICE
935 ISBISTER ST RESIDENTIAL	- CU	20 CU	4.54 SNL BLDG 100.290>SSL CAPULET CR	-	RENEW TO R W/20 CU PREVIOUSLY FROZEN
940 ISBISTER ST RESIDENTIAL	- CU	20 CU	5.63 SNL BLDG 75.900>SSL CAPULET CR	-	RECONNECT SERVICE
944 ISBISTER ST RESIDENTIAL	- CU	20 CU	5.42 NSL BLDG 59.650>SSL CAPULET CR	-	RECONNECT SERVICE
948 ISBISTER ST RESIDENTIAL	20 CU	20 CU	7.50 NSL BLDG 40.870>SSL CAPULET CR	-	RECONNECT SERVICE
952 ISBISTER ST RESIDENTIAL	- CU	20 CU	3.37 NSL BLDG 100.290>SSL CAPULET CR	-	RECONNECT SERVICE

* SERVICES TO BE RENEWED TO R. ALL OTHERS TO BE RECONNECTED

NOTE: CHAINAGES SHOWN ARE ALONG W. R. OF (ISBISTER STREET)

ISBISTER STREET

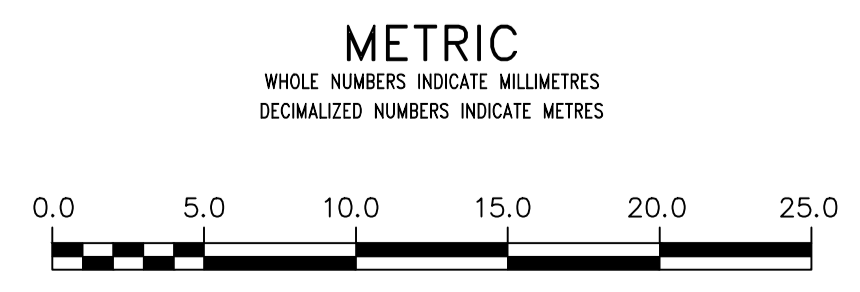


MATCHLINE 1+45.00 SEE DWG D-16444

MATCHLINE 2+70.00 SEE DWG D-16446

FOR INDEX SEE D-16440

NOTE: ALL VALVES TO BE INSTALLED CLOCKWISE TO CLOSE



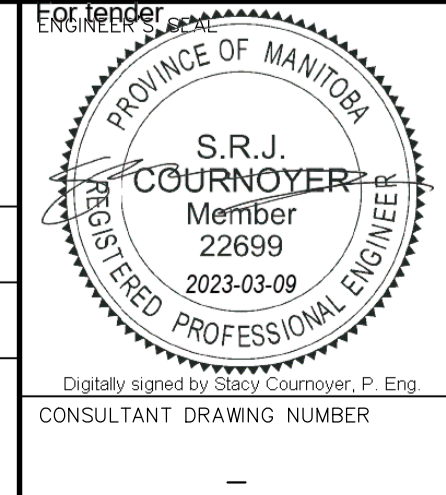
WARNING
IF POWER EQUIPMENT OR EXPLOSIVES ARE TO BE USED FOR EXCAVATION ON THIS PROJECT THE CONTRACTOR MUST:
1) NOTIFY THE GAS COMPANY OF THE PROPOSED LOCATION OF EXCAVATION.
2) TAKE PRECAUTION TO AVOID DAMAGE TO GAS COMPANY INSTALLATIONS.
SEE PROVINCIAL REGULATION 210/72 FOR DETAILS

LOCATION APPROVED UNDERGROUND STRUCTURES
SUPV. U/G STRUCTURES COMMITTEE DATE
NOTE:
LOCATION OF UNDERGROUND STRUCTURES AS SHOWN ARE BASED ON THE BEST INFORMATION AVAILABLE BUT NO GUARANTEE IS GIVEN THAT ALL EXISTING UTILITIES ARE SHOWN OR THAT THE GIVEN LOCATIONS ARE EXACT. CONFIRMATION OF EXISTENCE AND EXACT LOCATION OF ALL SERVICES MUST BE OBTAINED FROM THE INDIVIDUAL UTILITIES BEFORE PROCEEDING WITH CONSTRUCTION.

VERTICAL DATUM: CGVD28 (HT2.0 Geoid)
HORIZONTAL DATUM: NAD83 (June 1990), Zone 14

NO.	REVISIONS	DATE	BY

DESIGNED BY	RG	CHECKED BY	SC
DRAWN BY	AJ	APPROVED BY	KZ
SCALE:			
HORIZONTAL	1:250		
VERTICAL	1:50		
DATE	2023 03 01		
DATE	Mar 9, 2023		



THE CITY OF WINNIPEG
WATER AND WASTE DEPARTMENT
ENGINEERING DIVISION

2023 WATER MAIN RENEWALS
CONTRACT 12
ISBISTER STREET
155 S OF CAPULET CRESCENT TO
30 S OF CAPULET CRESCENT

SHEET 7 OF 13
CITY DRAWING NUMBER
D-16445