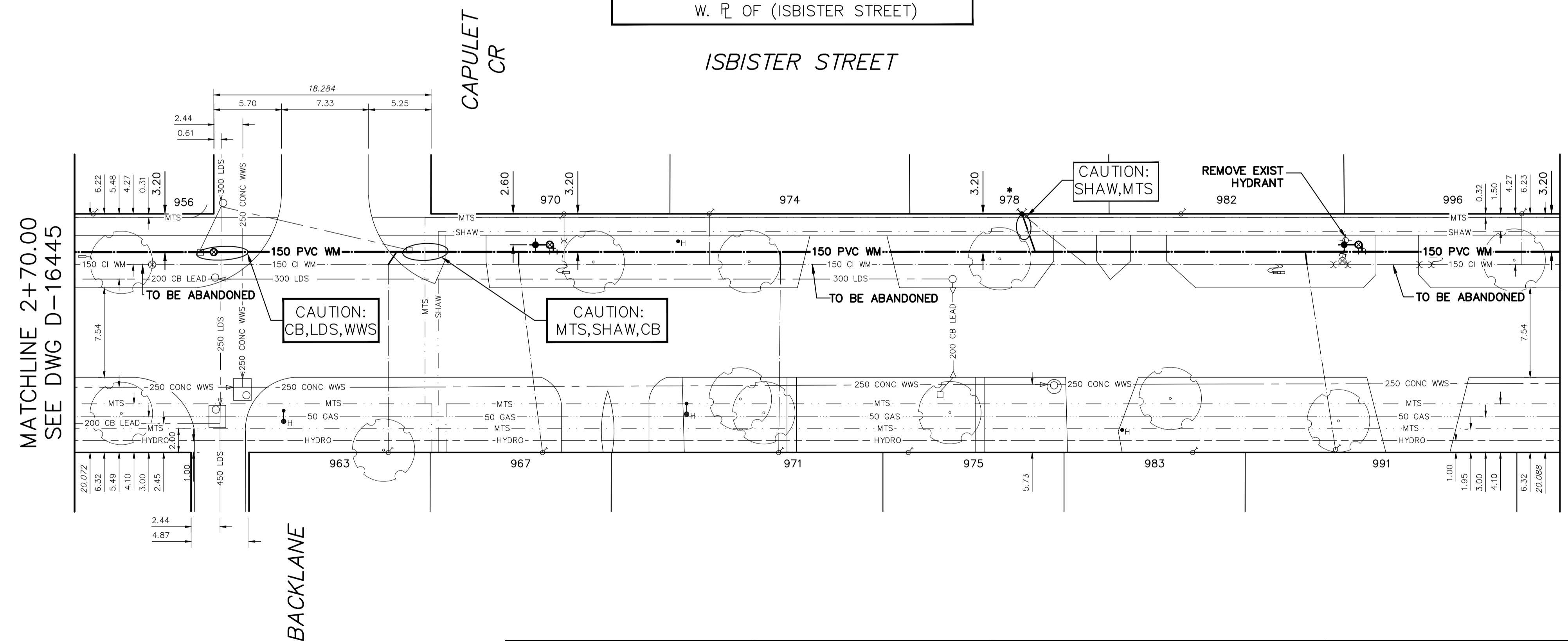
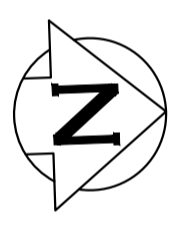


WATER SERVICE INFORMATION

ADDRESS	SIZE (mm) MATERIAL (STREET)	SIZE (mm) MATERIAL (PROP.)	SHORT & LONG MEASUREMENT	CORP LOCATION	REMARKS
956 ISBISTER ST RESIDENTIAL	-	20 CU	6.50 SNL BLDG 28.410 SNL CAPULET CR	-	RECONNECT SERVICE
963 ISBISTER ST RESIDENTIAL	20 CU	20 CU	2.50 SNL BLDG 3.600 SNL CAPULET CR	OPP OF S/C	RECONNECT SERVICE
967 ISBISTER ST RESIDENTIAL	20 CU	20 CU	2.72 SNL BLDG 9.380 NNL CAPULET CR	2.0 S OF S/C	RECONNECT SERVICE
970 ISBISTER ST RESIDENTIAL	20 CU	20 CU	0.21 SNL BLDG 11.200 NNL CAPULET CR	OPP OF S/C	RECONNECT SERVICE
971 ISBISTER ST RESIDENTIAL	20 CU	20 CU	4.09 SNL BLDG 29.250 NNL CAPULET CR	OPP OF S/C	RECONNECT SERVICE
974 ISBISTER ST RESIDENTIAL	20 CU	20 CU	15.95 SNL BLDG 23.420 NNL CAPULET CR	OPP OF S/C	RECONNECT SERVICE
975 ISBISTER ST RESIDENTIAL	-	20 CU	0.51 SNL BLDG 40.150 NNL CAPULET CR	-	RECONNECT SERVICE
* 978 ISBISTER ST RESIDENTIAL	20 CU	20 CU	7.78 SNL BLDG 49.730 NNL CAPULET CR	5.38 N OF S/C	RENEW TO R W/20 CU
982 ISBISTER ST RESIDENTIAL	-	20 CU	0.22 SNL BLDG 63.110 NNL CAPULET CR	-	RECONNECT SERVICE
983 ISBISTER ST RESIDENTIAL	-	20 CU	9.25 SNL BLDG 64.100 NNL CAPULET CR	-	RECONNECT SERVICE
991 ISBISTER ST RESIDENTIAL	-	20 CU	2.79 SNL BLDG 76.110 NNL CAPULET CR	2.4 S OF S/C	RECONNECT SERVICE
996 ISBISTER ST RESIDENTIAL	-	20 CU	14.56 SNL BLDG 91.790 NNL CAPULET CR	OPP OF S/C	RECONNECT SERVICE

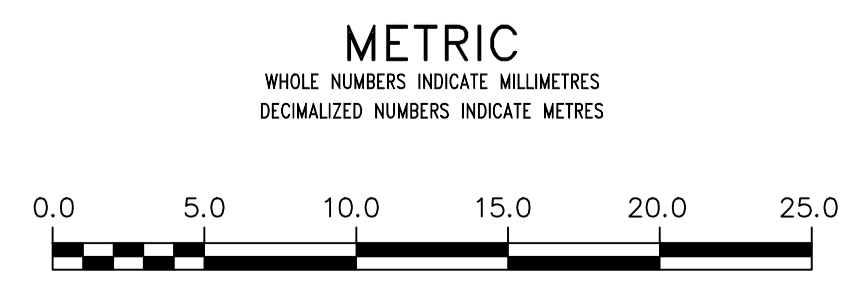
* SERVICES TO BE RENEWED TO R. ALL OTHERS TO BE RECONNECTED

NOTE: CHAINAGES SHOWN ARE ALONG W. R. OF (ISBISTER STREET)



FOR INDEX SEE D-16440

NOTE: ALL VALVES TO BE INSTALLED CLOCKWISE TO CLOSE



WARNING

IF POWER EQUIPMENT OR EXPLOSIVES ARE TO BE USED FOR EXCAVATION ON THIS PROJECT THE CONTRACTOR MUST:

- 1) NOTIFY THE GAS COMPANY OF THE PROPOSED LOCATION OF EXCAVATION.
- 2) TAKE PRECAUTION TO AVOID DAMAGE TO GAS COMPANY INSTALLATIONS.

SEE PROVINCIAL REGULATION 210/72 FOR DETAILS

LOCATION APPROVED UNDERGROUND STRUCTURES

SUPV. U/G STRUCTURES COMMITTEE DATE

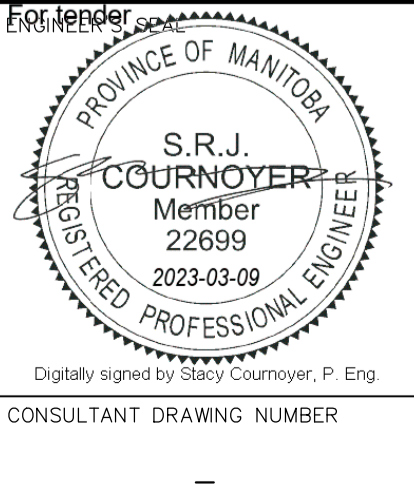
NOTE: LOCATION OF UNDERGROUND STRUCTURES AS SHOWN ARE BASED ON THE BEST INFORMATION AVAILABLE BUT NO GUARANTEE IS GIVEN THAT ALL EXISTING UTILITIES ARE SHOWN OR THAT THE GIVEN LOCATIONS ARE EXACT. CONFIRMATION OF EXISTENCE AND EXACT LOCATION OF ALL SERVICES MUST BE OBTAINED FROM THE INDIVIDUAL UTILITIES BEFORE PROCEEDING WITH CONSTRUCTION.

VERTICAL DATUM: CGVD28 (HT2.0 Geoid)

HORIZONTAL DATUM: NAD83 (June 1990), Zone 14

NO.	REVISIONS	DATE	BY

DESIGNED BY	RG	CHECKED BY	SC
DRAWN BY	AJ	APPROVED BY	KZ
SCALE:		RELEASED FOR CONSTRUCTION	
HORIZONTAL	1:250		
VERTICAL	1:50		
DATE	2023 03 01	DATE	Mar 9, 2023
PLOT DATE:	2023 03 01		



THE CITY OF WINNIPEG
WATER AND WASTE DEPARTMENT
ENGINEERING DIVISION

2023 WATER MAIN RENEWALS
CONTRACT 12
ISBISTER STREET
30 S OF CAPULET CRESCENT
95 N OF CAPULET CRESCENT

SHEET 8 OF 13
CITY DRAWING NUMBER
D-16446