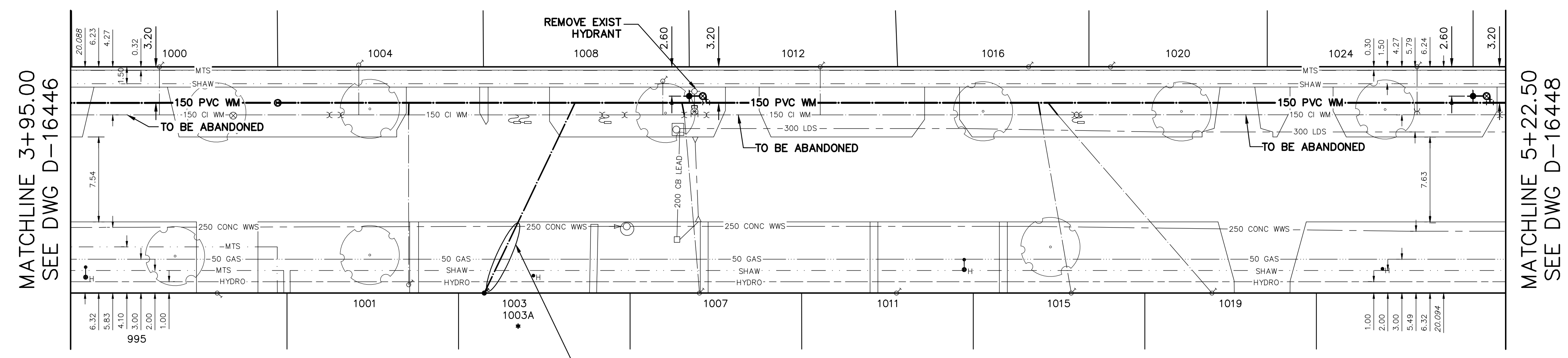
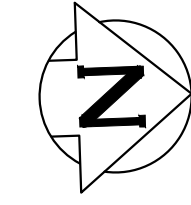


WATER SERVICE INFORMATION					
ADDRESS	SIZE (mm) MATERIAL (STREET)	SIZE (mm) MATERIAL (PROP.)	SHORT & LONG MEASUREMENT	CORP LOCATION	REMARKS
995 ISBISTER ST RESIDENTIAL	-	20 CU	4.43 SNL BLDG 128.120 SSL LUMSDEN AVE	-	RECONNECT SERVICE
1000 ISBISTER ST RESIDENTIAL	20 CU	20 CU	7.04 NSL BLDG 133.250 SSL LUMSDEN AVE	OPP OF S/C	RECONNECT SERVICE
1001 ISBISTER ST RESIDENTIAL	20 CU	20 CU	10.22 NSL BLDG 111.120 SSL LUMSDEN AVE	OPP OF S/C	RECONNECT SERVICE
1003 ISBISTER ST RESIDENTIAL	-	20 CU	2.00 NSL BLDG 104.400 SSL LUMSDEN AVE	-	RENEW TO P W/20 CU PREVIOUSLY FROZEN
1004 ISBISTER ST RESIDENTIAL	20 CU	20 CU	9.33 SNL BLDG 115.550 SSL LUMSDEN AVE	OPP OF S/C	RECONNECT SERVICE
1007 ISBISTER ST RESIDENTIAL	20 CU	20 CU	5.11 NSL BLDG 85.280 SSL LUMSDEN AVE	1.4 S OF S/C	RECONNECT SERVICE
1008 ISBISTER ST RESIDENTIAL	20 CU	20 CU	13.61 NSL BLDG 88.330 SSL LUMSDEN AVE	OPP OF S/C	RECONNECT SERVICE
1011 ISBISTER ST RESIDENTIAL	-	20 CU	7.56 NSL BLDG 67.770 SSL LUMSDEN AVE	-	RECONNECT SERVICE
1012 ISBISTER ST RESIDENTIAL	20 CU	20 CU	10.74 NSL BLDG 74.550 SSL LUMSDEN AVE	OPP OF S/C	RECONNECT SERVICE
1015 ISBISTER ST RESIDENTIAL	20 CU	20 CU	5.56 NSL BLDG 52.250 SSL LUMSDEN AVE	2.7 S OF S/C	RECONNECT SERVICE
1016 ISBISTER ST RESIDENTIAL	-	20 CU	3.95 NSL BLDG 56.640 SSL LUMSDEN AVE	-	RECONNECT SERVICE
1019 ISBISTER ST RESIDENTIAL	20 CU	20 CU	5.16 NSL BLDG 39.750 SSL LUMSDEN AVE	13.7 S OF S/C	RECONNECT SERVICE
1020 ISBISTER ST RESIDENTIAL	-	20 CU	8.89 SNL BLDG 48.760 SSL LUMSDEN AVE	OPP OF S/C	RECONNECT SERVICE
1024 ISBISTER ST RESIDENTIAL	20 CU	20 CU	3.67 SNL BLDG 21.530 SSL LUMSDEN AVE	OPP OF S/C	RECONNECT SERVICE

\* SERVICES TO BE RENEWED TO P. ALL OTHERS TO BE RECONNECTED

NOTE: CHAINAGES SHOWN ARE ALONG W. R. OF (ISBISTER STREET)

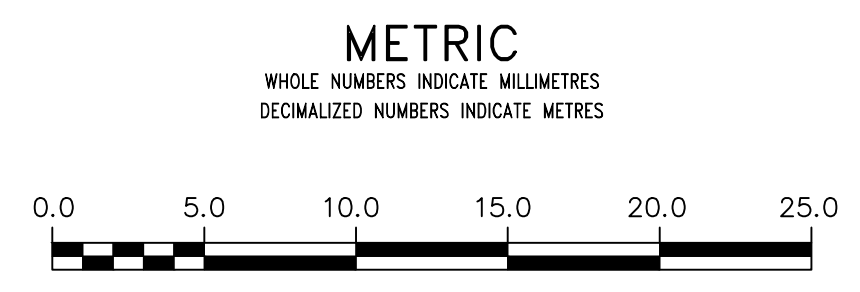
ISBISTER STREET



CAUTION: HYDRO, SHAW GAS, WWS

FOR INDEX SEE D-16440

NOTE: ALL VALVES TO BE INSTALLED CLOCKWISE TO CLOSE

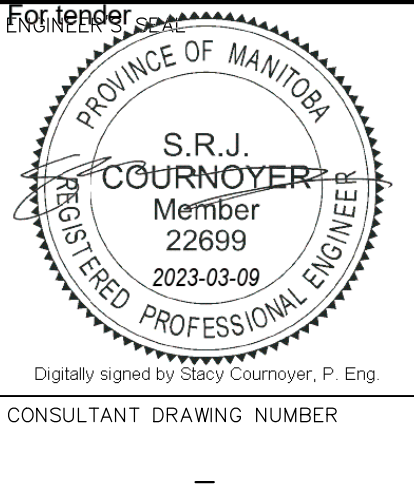


**WARNING**  
IF POWER EQUIPMENT OR EXPLOSIVES ARE TO BE USED FOR EXCAVATION ON THIS PROJECT THE CONTRACTOR MUST:  
1) NOTIFY THE GAS COMPANY OF THE PROPOSED LOCATION OF EXCAVATION.  
2) TAKE PRECAUTION TO AVOID DAMAGE TO GAS COMPANY INSTALLATIONS.  
SEE PROVINCIAL REGULATION 210/72 FOR DETAILS

**LOCATION APPROVED UNDERGROUND STRUCTURES**  
SUPV. U/G STRUCTURES COMMITTEE DATE  
NOTE:  
LOCATION OF UNDERGROUND STRUCTURES AS SHOWN ARE BASED ON THE BEST INFORMATION AVAILABLE BUT NO GUARANTEE IS GIVEN THAT ALL EXISTING UTILITIES ARE SHOWN OR THAT THE GIVEN LOCATIONS ARE EXACT. CONFIRMATION OF EXISTENCE AND EXACT LOCATION OF ALL SERVICES MUST BE OBTAINED FROM THE INDIVIDUAL UTILITIES BEFORE PROCEEDING WITH CONSTRUCTION.

VERTICAL DATUM: CGVD28 (HT2.0 Geoid)			
HORIZONTAL DATUM: NAD83 (June 1990), Zone 14			
NO.	REVISIONS	DATE	BY

DESIGNED BY	RG	CHECKED BY	SC
DRAWN BY	AJ	APPROVED BY	KZ
SCALE:	HORIZONTAL 1:250 VERTICAL 1:50		
DATE	2023 03 01	RELEASED FOR CONSTRUCTION	<i>[Signature]</i>
PLOT DATE:	2023 03 01	DATE	Mar 9, 2023



**THE CITY OF WINNIPEG**  
WATER AND WASTE DEPARTMENT  
ENGINEERING DIVISION

2023 WATER MAIN RENEWALS  
CONTRACT 12  
ISBISTER STREET  
95 N OF CAPULET CRESCENT TO  
13.5 S OF LUMSDEN AVENUE

SHEET 9 OF 13  
CITY DRAWING NUMBER  
D-16447