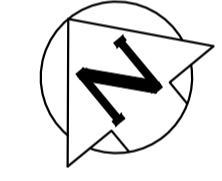


WATER SERVICE INFORMATION

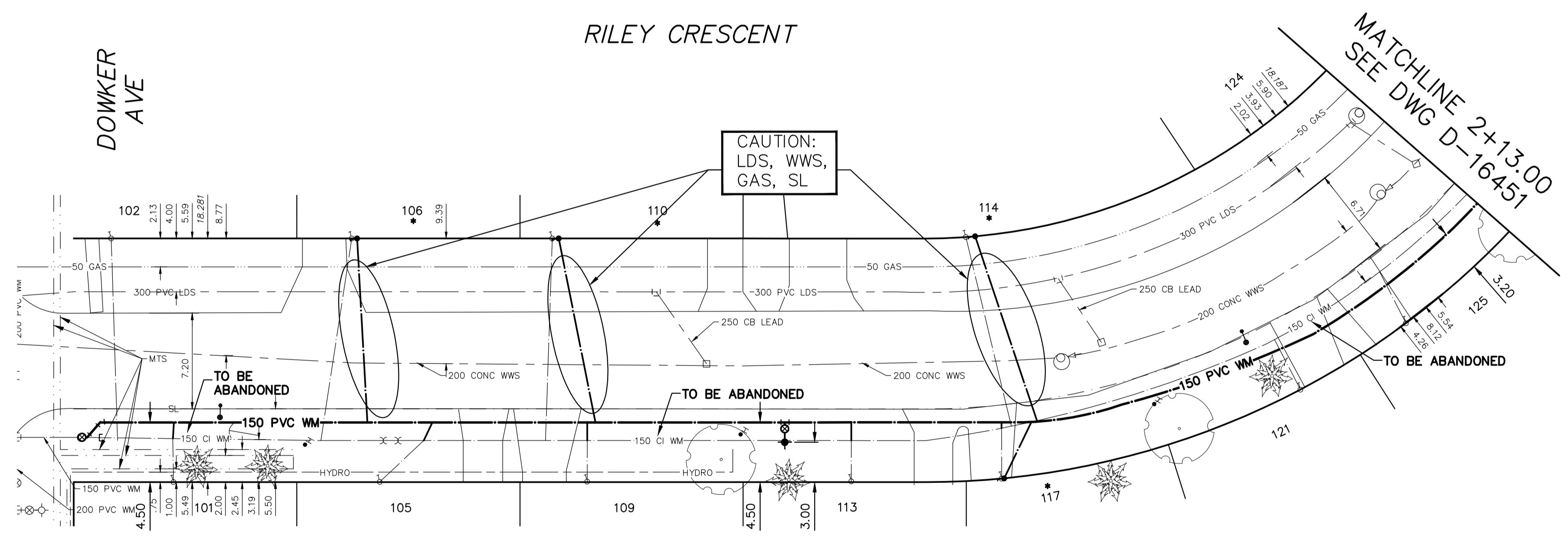
ADDRESS	SIZE (mm) MATERIAL (STREET)	SIZE (mm) MATERIAL (PROP.)	SHORT & LONG MEASUREMENT	LINEAR DISTANCE (1) CORP LOCATION (2)	REMARKS
101 RILEY CR RESIDENTIAL	-	-	7.08 NSL HSE	16.3	RECONNECT SERVICE
102 RILEY CR RESIDENTIAL	-	-	7.493 SNL DOWKER AVE	OPP OF S/C	RECONNECT SERVICE
105 RILEY CR RESIDENTIAL	-	-	12.33 NSL HSE	16.3	RECONNECT SERVICE
106 RILEY CR RESIDENTIAL	-	-	2.820 SNL DOWKER AVE	0.5 N OF S/C	RECONNECT SERVICE
109 RILEY CR RESIDENTIAL	-	-	4.89 SNL HSE	N/A	RECONNECT SERVICE
109 RILEY CR RESIDENTIAL	-	-	22.993 SNL DOWKER AVE	3.4 S OF S/C	RECONNECT SERVICE
* 106 RILEY CR RESIDENTIAL	20 CU	20 CU	0.62 SNL HSE	N/A	RENEW TO R W/20 CU
109 RILEY CR RESIDENTIAL	-	-	20.887 SNL DOWKER AVE	2.3 N OF S/C	PREVIOUSLY FROZEN
109 RILEY CR RESIDENTIAL	-	-	2.18 SNL HSE	N/A	RECONNECT SERVICE
109 RILEY CR RESIDENTIAL	-	-	38.573 SNL DOWKER AVE	OPP OF S/C	RECONNECT SERVICE
* 110 RILEY CR RESIDENTIAL	-	-	0.8 SNL HSE	N/A	RENEW TO R W/20 CU
110 RILEY CR RESIDENTIAL	-	-	35.945 SNL DOWKER AVE	0.5 N OF S/C	PREVIOUSLY FROZEN
113 RILEY CR RESIDENTIAL	-	-	3.81 NSL HSE	16.3	RECONNECT SERVICE
114 RILEY CR RESIDENTIAL	20 CU	-	58.406 SNL DOWKER AVE	OPP OF S/C	RECONNECT SERVICE
* 114 RILEY CR RESIDENTIAL	-	-	5.03 EWL HSE	16.3	RENEW TO R W/20 CU
114 RILEY CR RESIDENTIAL	-	-	67.006 SNL DOWKER AVE	1.8 E OF S/C	PREVIOUSLY FROZEN
* 117 RILEY CR RESIDENTIAL	-	-	1.15 WWL HSE	N/A	RENEW TO R W/20 CU
117 RILEY CR RESIDENTIAL	-	-	69.843 SNL DOWKER AVE	0.3 W OF S/C	PREVIOUSLY FROZEN
121 RILEY CR RESIDENTIAL	-	-	8.35 WEL HSE	N/A	RECONNECT SERVICE
121 RILEY CR RESIDENTIAL	-	-	93.266 SNL DOWKER AVE	OPP OF S/C	RECONNECT SERVICE
124 RILEY CR RESIDENTIAL	-	-	7.03 WEL HSE	N/A	RECONNECT SERVICE
124 RILEY CR RESIDENTIAL	-	-	124.581 WWL BUXTON RD	2.3 E OF S/C	RECONNECT SERVICE
129 RILEY CR RESIDENTIAL	-	-	1.27 WWL HSE	N/A	RECONNECT SERVICE
129 RILEY CR RESIDENTIAL	-	-	102.632 SNL DOWKER AVE	0.8 E OF S/C	RECONNECT SERVICE
129 RILEY CR RESIDENTIAL	-	-	OPP WL HSE	16.3	RECONNECT SERVICE
129 RILEY CR RESIDENTIAL	-	-	125.269 WWL BUXTON RD	0.3 W OF S/C	RECONNECT SERVICE
132 RILEY CR RESIDENTIAL	-	-	OPP WL HSE	16.3	RECONNECT SERVICE
132 RILEY CR RESIDENTIAL	-	-	98.153 WWL BUXTON RD	0.9 W OF S/C	RECONNECT SERVICE
133 RILEY CR RESIDENTIAL	-	-	4.43 WEL HSE	N/A	RECONNECT SERVICE
137 RILEY CR RESIDENTIAL	-	-	102.732 WWL BUXTON RD	4.7 W OF S/C	RECONNECT SERVICE
137 RILEY CR RESIDENTIAL	-	-	7.31 EWL HSE	N/A	RECONNECT SERVICE
137 RILEY CR RESIDENTIAL	-	-	86.631 WWL BUXTON RD	1.5 W OF S/C	RECONNECT SERVICE
137 RILEY CR RESIDENTIAL	-	-	2.31 EWL HSE	N/A	RECONNECT SERVICE
137 RILEY CR RESIDENTIAL	-	-	91.631 WWL BUXTON RD	0.6 E OF S/C	RECONNECT SERVICE
139 RILEY CR RESIDENTIAL	-	-	9.37 WEL HSE	16.3	RECONNECT SERVICE
140 RILEY CR RESIDENTIAL	-	-	73.587 WWL BUXTON RD	0.9 W OF S/C	RECONNECT SERVICE
140 RILEY CR RESIDENTIAL	-	-	4.95 EWL HSE	16.3	RECONNECT SERVICE
140 RILEY CR RESIDENTIAL	-	-	69.950 WWL BUXTON RD	1.9 W OF S/C	RECONNECT SERVICE
143 RILEY CR RESIDENTIAL	-	-	10.28 WEL HSE	N/A	RECONNECT SERVICE
144 RILEY CR RESIDENTIAL	20 CU	20 CU	59.595 WWL BUXTON RD	2.4 W OF S/C	RECONNECT SERVICE
* 144 RILEY CR RESIDENTIAL	-	-	0.63 EWL HSE	N/A	RENEW TO R W/20 CU
* 144 RILEY CR RESIDENTIAL	-	-	60.517 WWL BUXTON RD	3.2 W OF S/C	RECONNECT SERVICE

(1) LINEAR DISTANCE FROM THE S/C TO THE CORP USED ALONG BENDS & CURVED R.O.W.
 (2) DIRECTION FROM S/C
 * SERVICES TO BE RENEWED TO R. ALL OTHERS TO BE RECONNECTED

NOTE: CHAINAGES SHOWN ARE ALONG S. R. OF RILEY CR

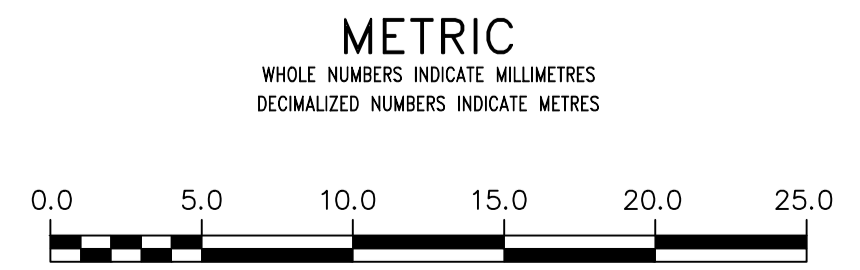


RILEY CRESCENT



FOR INDEX SEE D-16440

NOTE: ALL VALVES TO BE INSTALLED CLOCKWISE TO CLOSE



WARNING
 IF POWER EQUIPMENT OR EXPLOSIVES ARE TO BE USED FOR EXCAVATION ON THIS PROJECT THE CONTRACTOR MUST:
 1) NOTIFY THE GAS COMPANY OF THE PROPOSED LOCATION OF EXCAVATION.
 2) TAKE PRECAUTION TO AVOID DAMAGE TO GAS COMPANY INSTALLATIONS.
 SEE PROVINCIAL REGULATION 210/72 FOR DETAILS

LOCATION APPROVED UNDERGROUND STRUCTURES
 SUPV. U/C STRUCTURES COMMITTEE DATE
 NOTE:
 LOCATION OF UNDERGROUND STRUCTURES AS SHOWN ARE BASED ON THE BEST INFORMATION AVAILABLE BUT NO GUARANTEE IS GIVEN THAT ALL EXISTING UTILITIES ARE SHOWN OR THAT THE GIVEN LOCATIONS ARE EXACT. CONFIRMATION OF EXISTENCE AND EXACT LOCATION OF ALL SERVICES MUST BE OBTAINED FROM THE INDIVIDUAL UTILITIES BEFORE PROCEEDING WITH CONSTRUCTION.

VERTICAL DATUM: CGVD28 (HT2.0 Geoid)
 HORIZONTAL DATUM: NAD83 (June 1990), Zone 14

NO.	REVISIONS	DATE	BY

DESIGNED BY	RG	CHECKED BY	SC
DRAWN BY	RS	APPROVED BY	KZ
SCALE:		RELEASED FOR CONSTRUCTION	<i>[Signature]</i>
HORIZONTAL	1: 250	DATE	2023 03 03
VERTICAL	1: 50	DATE	Mar 9, 2023
PLOT DATE:	2023 03 03		



THE CITY OF WINNIPEG
 WATER AND WASTE DEPARTMENT
 ENGINEERING DIVISION

2023 WATER MAIN RENEWALS
 CONTRACT 12
RILEY CRESCENT
 DOWKER AVENUE TO
 113 E OF DOWKER AVENUE

SHEET 12 OF 13
 CITY DRAWING NUMBER
D-16450