

WATER SERVICE INFORMATION

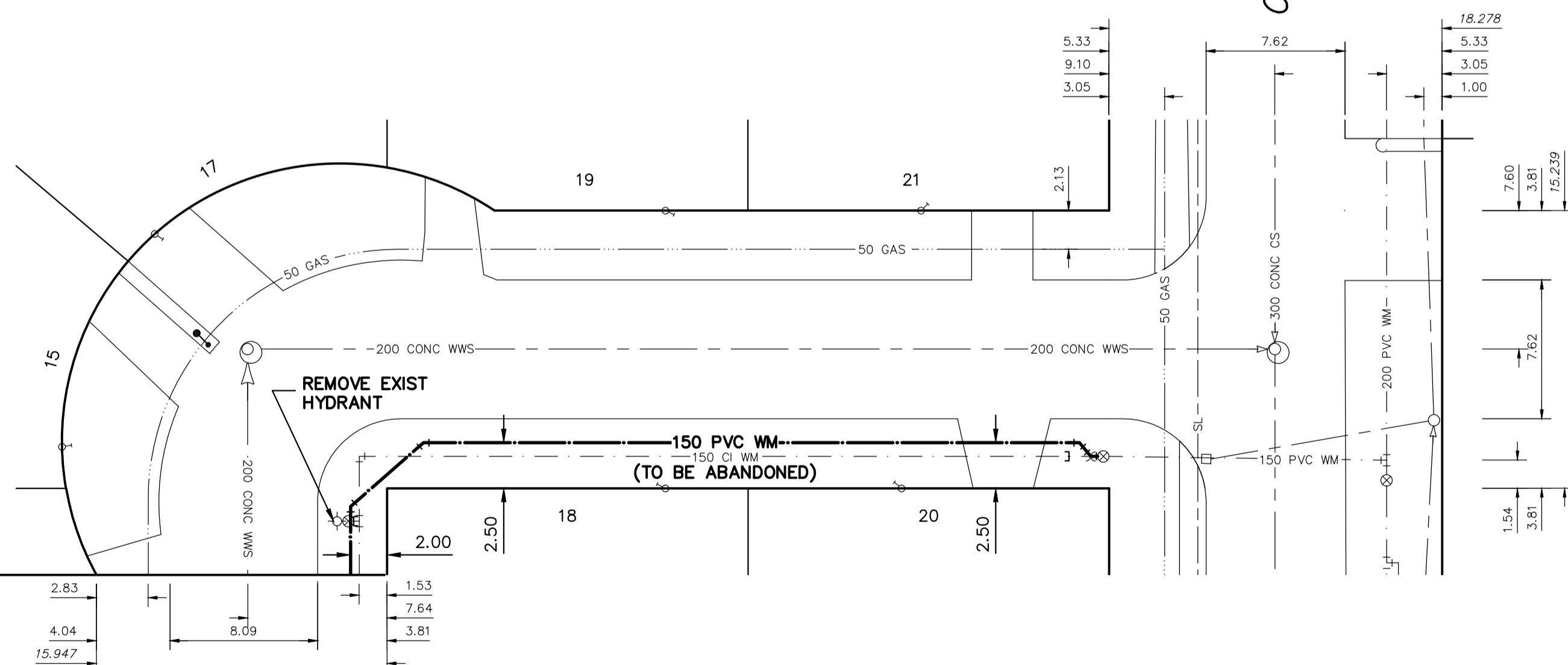
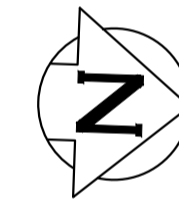
ADDRESS	SIZE (mm) MATERIAL (STREET)	SIZE (mm) MATERIAL (PROP.)	SHORT & LONG MEASUREMENT	CORP LOCATION	REMARKS
15 CHIPPAWA BAY RESIDENTIAL	-	20 CU	0.17 WEL HSE	-	RECONNECT SERVICE
17 CHIPPAWA BAY RESIDENTIAL	-	20 CU	57.451 SSL COMANCHE RD	-	RECONNECT SERVICE
18 CHIPPAWA BAY RESIDENTIAL	-	20 CU	52.360 SSL COMANCHE RD	-	RECONNECT SERVICE
19 CHIPPAWA BAY RESIDENTIAL	-	20 CU	2.10 SNL HSE	-	RECONNECT SERVICE
20 CHIPPAWA BAY RESIDENTIAL	-	20 CU	24.342 SSL COMANCHE RD	-	RECONNECT SERVICE
21 CHIPPAWA BAY RESIDENTIAL	-	20 CU	2.34 SNL HSE	-	RECONNECT SERVICE
22 CHIPPAWA BAY RESIDENTIAL	-	20 CU	24.342 SSL COMANCHE RD	-	RECONNECT SERVICE
23 CHIPPAWA BAY RESIDENTIAL	-	20 CU	5.3 NSL HSE	-	RECONNECT SERVICE
24 CHIPPAWA BAY RESIDENTIAL	-	20 CU	11.384 SSL COMANCHE RD	-	RECONNECT SERVICE
25 CHIPPAWA BAY RESIDENTIAL	-	20 CU	6.31 NSL HSE	-	RECONNECT SERVICE
26 CHIPPAWA BAY RESIDENTIAL	-	20 CU	10.316 SSL COMANCHE RD	-	RECONNECT SERVICE

• SERVICES TO BE RENEWED TO R. ALL OTHERS TO BE RECONNECTED

NOTE: CHAINAGES SHOWN ARE ALONG W LEG OF CHIPPAWA BAY (W-LEG)

CHIPPAWA BAY (W-LEG)

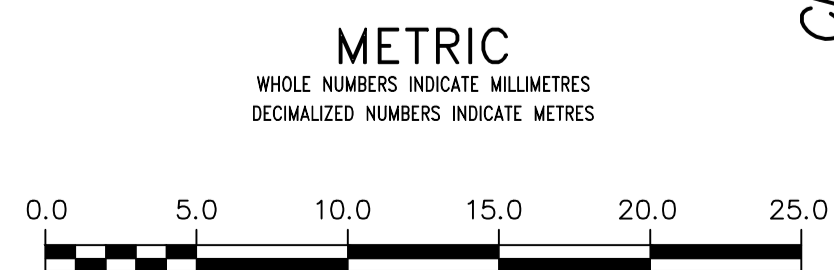
COMANCHE RD



FOR CONTINUATION SEE DWG D-16505

FOR INDEX SEE D-16501

NOTE: ALL VALVES TO BE INSTALLED CLOCKWISE TO CLOSE



CHIPPAWA BAY (S-LEG)

<p>WARNING</p> <p>IF POWER EQUIPMENT OR EXPLOSIVES ARE TO BE USED FOR EXCAVATION ON THIS PROJECT THE CONTRACTOR MUST:</p> <ol style="list-style-type: none"> 1) NOTIFY THE GAS COMPANY OF THE PROPOSED LOCATION OF EXCAVATION. 2) TAKE PRECAUTION TO AVOID DAMAGE TO GAS COMPANY INSTALLATIONS. <p>SEE PROVINCIAL REGULATION 210/72 FOR DETAILS</p>	<p>LOCATION APPROVED UNDERGROUND STRUCTURES</p> <p>SUPV. U/G STRUCTURES COMMITTEE DATE</p> <p>NOTE:</p> <p>LOCATION OF UNDERGROUND STRUCTURES AS SHOWN ARE BASED ON THE BEST INFORMATION AVAILABLE BUT NO GUARANTEE IS GIVEN THAT ALL EXISTING UTILITIES ARE SHOWN OR THAT THE GIVEN LOCATIONS ARE EXACT. CONFIRMATION OF EXISTENCE AND EXACT LOCATION OF ALL SERVICES MUST BE OBTAINED FROM THE INDIVIDUAL UTILITIES BEFORE PROCEEDING WITH CONSTRUCTION.</p>	<p>VERTICAL DATUM: CGVD28 (HT2.0 Geoid)</p> <p>HORIZONTAL DATUM: NAD83 (June 1990), Zone 14</p>		<p>DESIGNED BY: JB</p> <p>CHECKED BY: SC</p> <p>DRAWN BY: AOM</p> <p>APPROVED BY: KZ</p> <p>RELEASED FOR CONSTRUCTION</p> <p>DATE: 2023 03 22</p>	<p>CONSULTANT DRAWING NUMBER</p>	<p>THE CITY OF WINNIPEG</p> <p>WATER AND WASTE DEPARTMENT</p> <p>ENGINEERING DIVISION</p> <p>2023 WATER MAIN RENEWALS</p> <p>CONTRACT 5</p> <p>CHIPPAWA BAY (W-LEG)</p> <p>CHIPPAWA BAY (S-LEG) TO COMANCHE ROAD</p>	<p>SHEET 5 OF 14</p> <p>CITY DRAWING NUMBER</p> <p>D-16504</p>				
		<p>REVISIONS</p> <table border="1"> <thead> <tr> <th>NO.</th> <th>REVISIONS</th> <th>DATE</th> <th>BY</th> </tr> </thead> <tbody> <tr> <td> </td> <td> </td> <td> </td> <td> </td> </tr> </tbody> </table>						NO.	REVISIONS	DATE	BY
NO.	REVISIONS	DATE	BY								