

**WATER SERVICE INFORMATION**

ADDRESS	SIZE (mm) MATERIAL (STREET)	SIZE (mm) MATERIAL (PROP.)	SHORT & LONG MEASUREMENT	CORP LOCATION	REMARKS
5 CHIPPAWA BAY	--	20	1.99 NSL HSE	--	RECONNECT SERVICE
RESIDENTIAL	--	CU	54.016 SSL COMANCHE RD	--	RECONNECT SERVICE
7 CHIPPAWA BAY	--	20	1.21 EWL HSE	--	RECONNECT SERVICE
RESIDENTIAL	--	CU	55.968 SSL COMANCHE RD	--	RECONNECT SERVICE
9 CHIPPAWA BAY	--	20	10.45 EWL HSE	--	RECONNECT SERVICE
RESIDENTIAL	--	CU	57.798 WEL CHIPPAWA BAY (W-LEG)	--	RECONNECT SERVICE
11 CHIPPAWA BAY	--	20	4.01 EWL HSE	--	RECONNECT SERVICE
RESIDENTIAL	--	CU	26.232 WEL CHIPPAWA BAY (W-LEG)	--	RECONNECT SERVICE
13 CHIPPAWA BAY	--	20	2.94 EWL HSE	--	RECONNECT SERVICE
RESIDENTIAL	--	CU	5.798 WEL CHIPPAWA BAY (W-LEG)	--	RECONNECT SERVICE
15 CHIPPAWA BAY	--	20	0.71 WEL HSE	--	RECONNECT SERVICE
RESIDENTIAL	--	CU	57.451 SSL COMANCHE RD	--	RECONNECT SERVICE
17 CHIPPAWA BAY	--	20	2.70 NSL HSE	--	RECONNECT SERVICE
RESIDENTIAL	--	CU	52.360 SSL COMANCHE RD	--	RECONNECT SERVICE

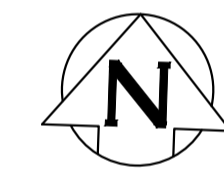
•SERVICES TO BE RENEWED TO R. ALL OTHERS TO BE RECONNECTED

NOTE: CHAINAGES SHOWN ARE ALONG  
N R OF CHIPPAWA BAY (S-LEG)

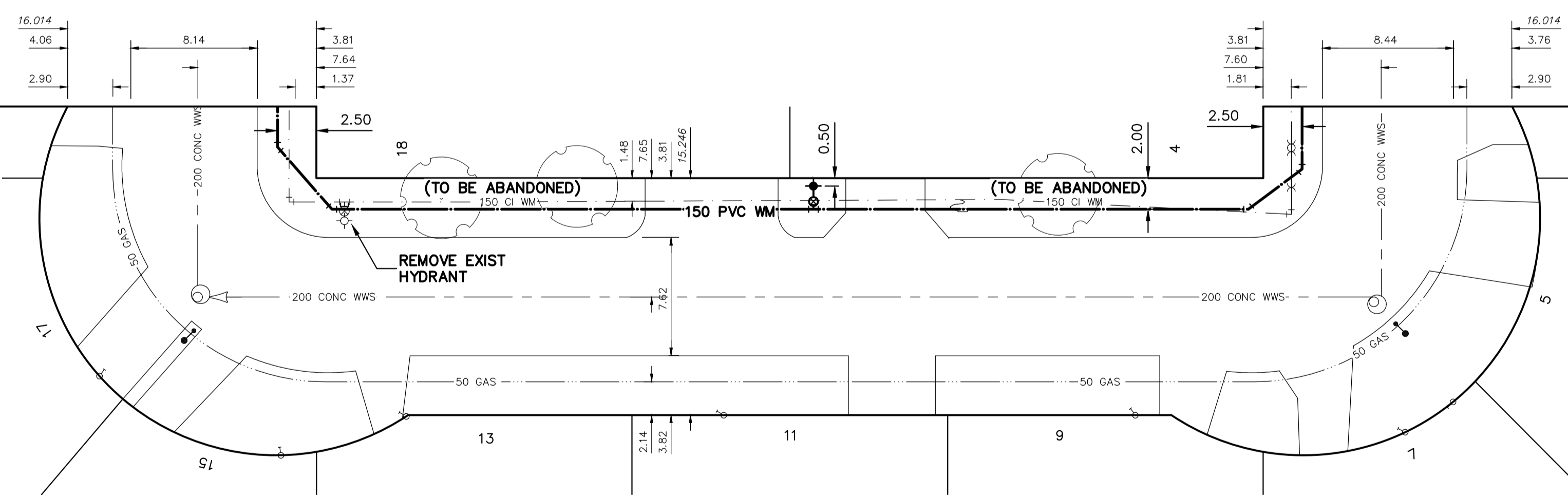
CHIPPAWA BAY  
(W-LEG)

CHIPPAWA BAY (S-LEG)

CHIPPAWA BAY  
(E-LEG)



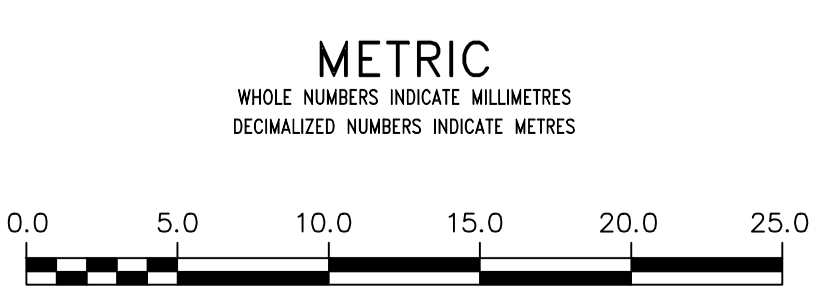
FOR CONTINUATION  
SEE DWG D-16504



FOR CONTINUATION  
SEE DWG D-16506

FOR INDEX SEE  
D-16501

NOTE: ALL VALVES TO BE INSTALLED  
CLOCKWISE TO CLOSE

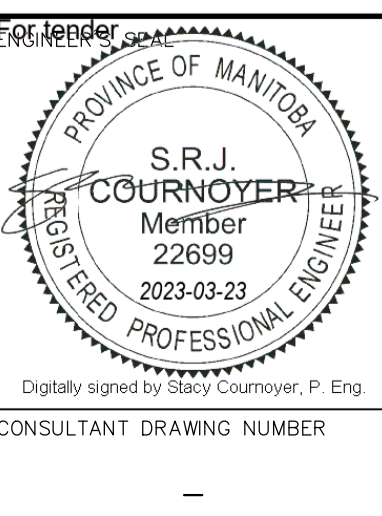


**WARNING**  
IF POWER EQUIPMENT OR EXPLOSIVES  
ARE TO BE USED FOR EXCAVATION ON  
THIS PROJECT THE CONTRACTOR MUST:  
1) NOTIFY THE GAS COMPANY OF THE  
PROPOSED LOCATION OF EXCAVATION.  
2) TAKE PRECAUTION TO AVOID DAMAGE  
TO GAS COMPANY INSTALLATIONS.  
SEE PROVINCIAL REGULATION 21072 FOR DETAILS

**LOCATION APPROVED  
UNDERGROUND STRUCTURES**  
SUPV. U/G STRUCTURES COMMITTEE DATE  
NOTE:  
LOCATION OF UNDERGROUND STRUCTURES AS  
SHOWN ARE BASED ON THE BEST INFORMATION  
AVAILABLE BUT NO GUARANTEE IS GIVEN THAT ALL  
EXISTING UTILITIES ARE SHOWN OR THAT THE GIVEN  
LOCATIONS ARE EXACT. CONFIRMATION OF  
EXISTENCE AND EXACT LOCATION OF ALL  
UTILITIES MUST BE OBTAINED FROM THE INDIVIDUAL  
UTILITIES BEFORE PROCEEDING WITH CONSTRUCTION.

VERTICAL DATUM: CGVD28 (HT2.0 Geoid)	
HORIZONTAL DATUM: NAD83 (June 1990), Zone 14	
NO.	REVISIONS
	DATE BY

DESIGNED BY	JB	CHECKED BY	SC
DRAWN BY	AOM	APPROVED BY	KZ
SCALE:		RELEASED FOR CONSTRUCTION	
HORIZONTAL	1:250		
VERTICAL	1:50		
DATE	2023 03 22	DATE	



**THE CITY OF WINNIPEG**  
WATER AND WASTE DEPARTMENT  
ENGINEERING DIVISION

2023 WATER MAIN RENEWALS  
CONTRACT 5  
**CHIPPAWA BAY (S-LEG)**  
CHIPPAWA BAY (W-LEG) TO  
CHIPPAWA BAY (E-LEG)

SHEET 6 OF 14  
CITY DRAWING NUMBER  
D-16505