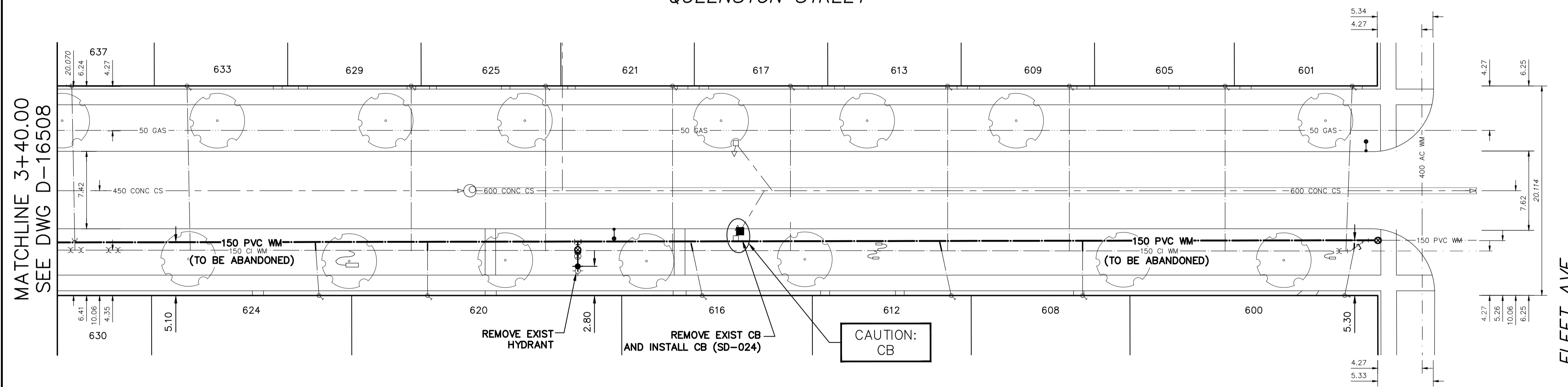


WATER SERVICE INFORMATION					
ADDRESS	SIZE (mm) MATERIAL (STREET)	SIZE (mm) MATERIAL (PROP.)	SHORT & LONG MEASUREMENT	CORP LOCATION (2)	REMARKS
600 QUEENSTON ST	20	25	3.169 SSL FLEET AVE	0.6 S OF S/C	RECONNECT SERVICE
RESIDENTIAL	CU	CU			
601 QUEENSTON ST	20	20	0.87 SSL HSE	0.9 N OF S/C	RECONNECT SERVICE
RESIDENTIAL	CU	CU	2.416 SSL FLEET AVE		
605 QUEENSTON ST	20	20	0.44 NSL HSE	OPP OF S/C	RECONNECT SERVICE
RESIDENTIAL	CU	CU	14.601 SSL FLEET AVE		
608 QUEENSTON ST	20	20	3.36 SSL HSE	OPP OF S/C	RECONNECT SERVICE
RESIDENTIAL	CU	CU	28.314 SSL FLEET AVE		
609 QUEENSTON ST	20	20	0.84 SSL HSE	OPP OF S/C	RECONNECT SERVICE
RESIDENTIAL	CU	CU	29.541 SSL FLEET AVE		
612 QUEENSTON ST	20	20	0.95 SSL HSE	OPP OF S/C	RECONNECT SERVICE
RESIDENTIAL	CU	CU	40.925 SSL FLEET AVE		
613 QUEENSTON ST	20	20	OPP NL HSE	OPP OF S/C	RECONNECT SERVICE
RESIDENTIAL	CU	CU	41.220 SSL FLEET AVE		
616 QUEENSTON ST	20	20	4.07 NSL HSE	0.9 S OF S/C	RECONNECT SERVICE
RESIDENTIAL	CU	CU	64.807 SSL FLEET AVE		
617 QUEENSTON ST	20	20	1.81 SSL HSE	OPP OF S/C	RECONNECT SERVICE
RESIDENTIAL	CU	CU	56.229 SSL FLEET AVE		
620 QUEENSTON ST	25	25	2.95 NSL HSE	OPP OF S/C	RECONNECT SERVICE
RESIDENTIAL	CU	CU	91.163 SSL FLEET AVE		
621 QUEENSTON ST	20	20	0.46 SSL HSE	OPP OF S/C	RECONNECT SERVICE
RESIDENTIAL	CU	CU	67.616 SSL FLEET AVE		
624 QUEENSTON ST	25	20	0.62 NSL HSE	0.3 S OF S/C	RECONNECT SERVICE
RESIDENTIAL	CU	CU	101.579 SSL FLEET AVE		
625 QUEENSTON ST	20	20	OPP NL HSE	OPP OF S/C	RECONNECT SERVICE
RESIDENTIAL	CU	CU	79.793 SSL FLEET AVE		
629 QUEENSTON ST	20	20	0.53 SSL HSE	OPP OF S/C	RECONNECT SERVICE
RESIDENTIAL	CU	CU	92.688 SSL FLEET AVE		
633 QUEENSTON ST	20	20	1.16 NSL HSE	0.3 N OF S/C	RECONNECT SERVICE
RESIDENTIAL	CU	CU	114.196 SSL FLEET AVE		
637 QUEENSTON ST	20	20	1.40 NSL HSE	0.3 N OF S/C	RECONNECT SERVICE
RESIDENTIAL	CU	CU	125.251 SSL FLEET AVE		

* SERVICES TO BE RENEWED TO R. ALL OTHERS TO BE RECONNECTED

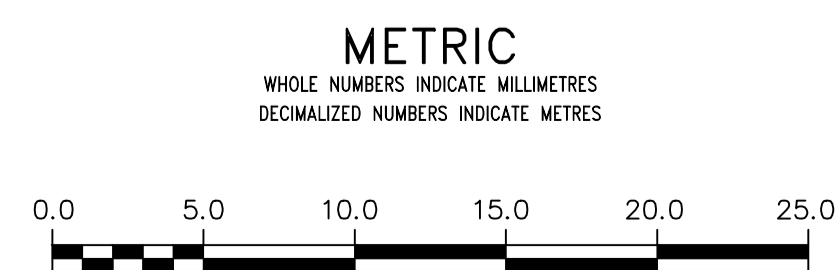
NOTE: CHAINAGES SHOWN ARE ALONG W_L OF QUEENSTON STREET

QUEENSTON STREET



FOR INDEX SEE D-16501

NOTE: ALL VALVES TO BE INSTALLED COUNTERCLOCKWISE TO CLOSE

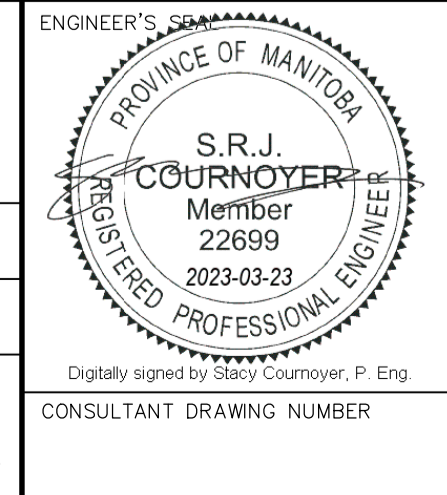


WARNING
IF POWER EQUIPMENT OR EXPLOSIVES ARE TO BE USED FOR EXCAVATION ON THIS PROJECT THE CONTRACTOR MUST:
1) NOTIFY THE GAS COMPANY OF THE PROPOSED LOCATION OF EXCAVATION.
2) TAKE PRECAUTION TO AVOID DAMAGE TO GAS COMPANY INSTALLATIONS.
SEE PROVINCIAL REGULATION 21072 FOR DETAILS

LOCATION APPROVED UNDERGROUND STRUCTURES
SUPV. U/G STRUCTURES COMMITTEE DATE
NOTE:
LOCATION OF UNDERGROUND STRUCTURES AS SHOWN ARE BASED ON THE BEST INFORMATION AVAILABLE BUT NO GUARANTEE IS GIVEN THAT ALL EXISTING UTILITIES ARE SHOWN OR THAT THE GIVEN LOCATIONS ARE EXACT. CONFIRMATION OF EXISTENCE AND EXACT LOCATION OF ALL SERVICES MUST BE OBTAINED FROM THE INDIVIDUAL UTILITIES BEFORE PROCEEDING WITH CONSTRUCTION.

VERTICAL DATUM: CGVD28 (HT2.0 Geoid)			
HORIZONTAL DATUM: NAD83 (June 1990), Zone 14			
NO.	REVISIONS	DATE	BY

DESIGNED BY	JB	CHECKED BY	SC
DRAWN BY	AOM	APPROVED BY	KZ
SCALE:		RELEASED FOR CONSTRUCTION	
HORIZONTAL	1:250		
VERTICAL	1:50		
DATE	2023 03 23	DATE	



THE CITY OF WINNIPEG
WATER AND WASTE DEPARTMENT
ENGINEERING DIVISION

2023 WATER MAIN RENEWALS
CONTRACT 5
QUEENSTON STREET
240 N OF N_R OF GRANT AVENUE
FLEET STREET

SHEET 10 OF 14
CITY DRAWING NUMBER
D-16509