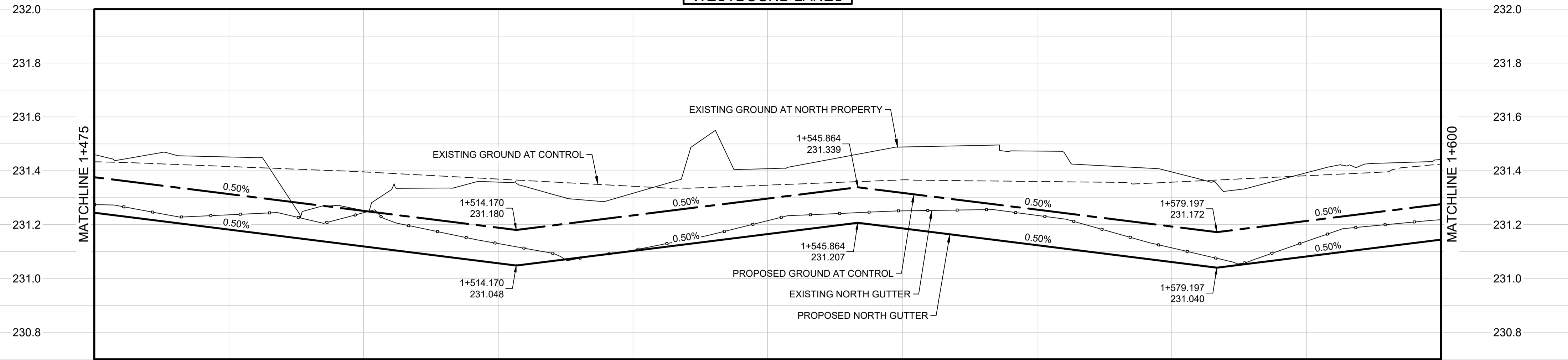
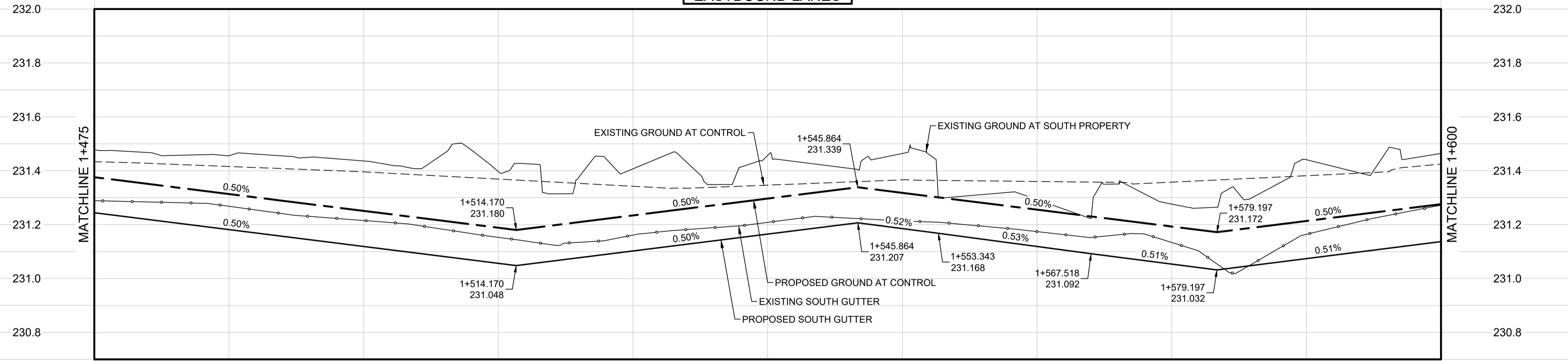


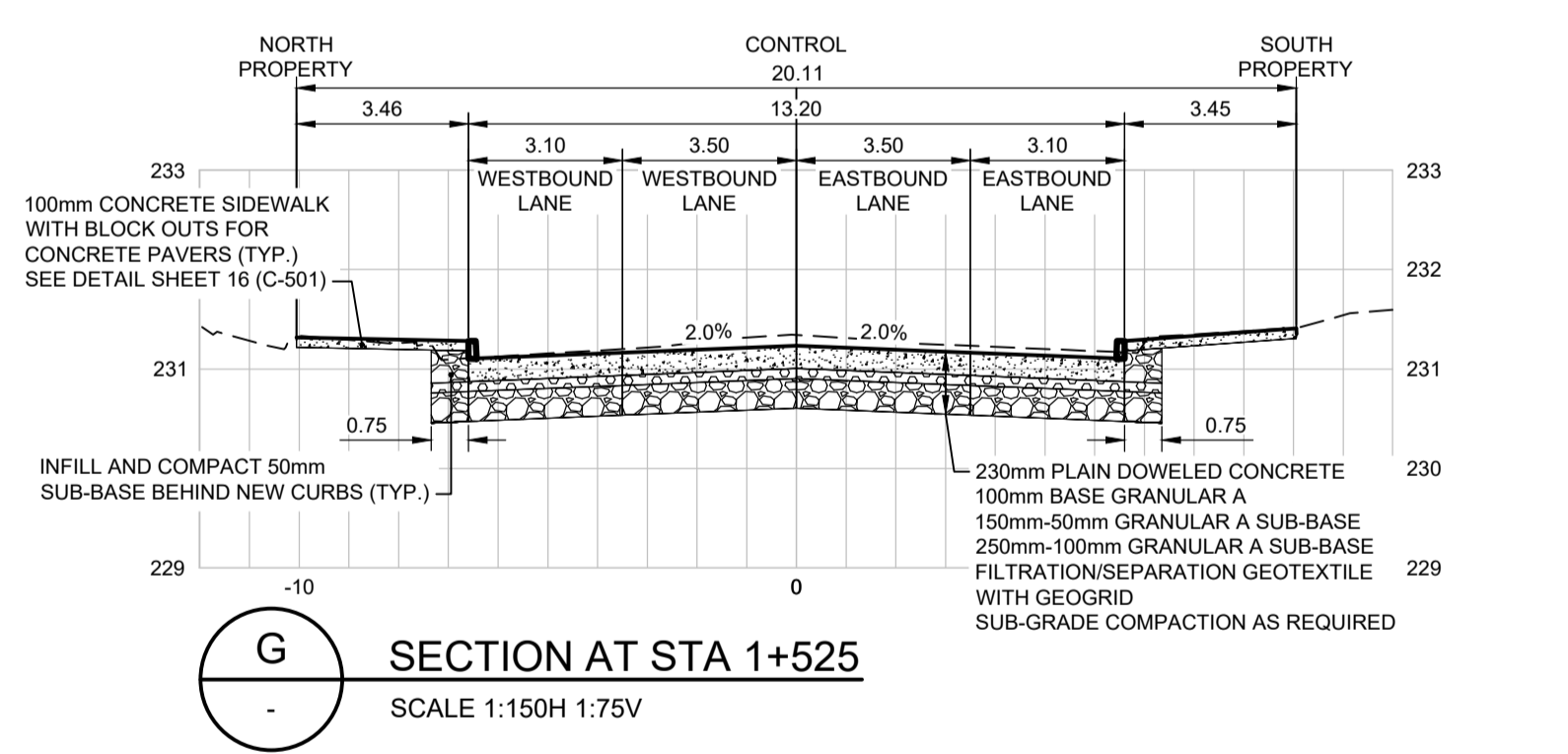
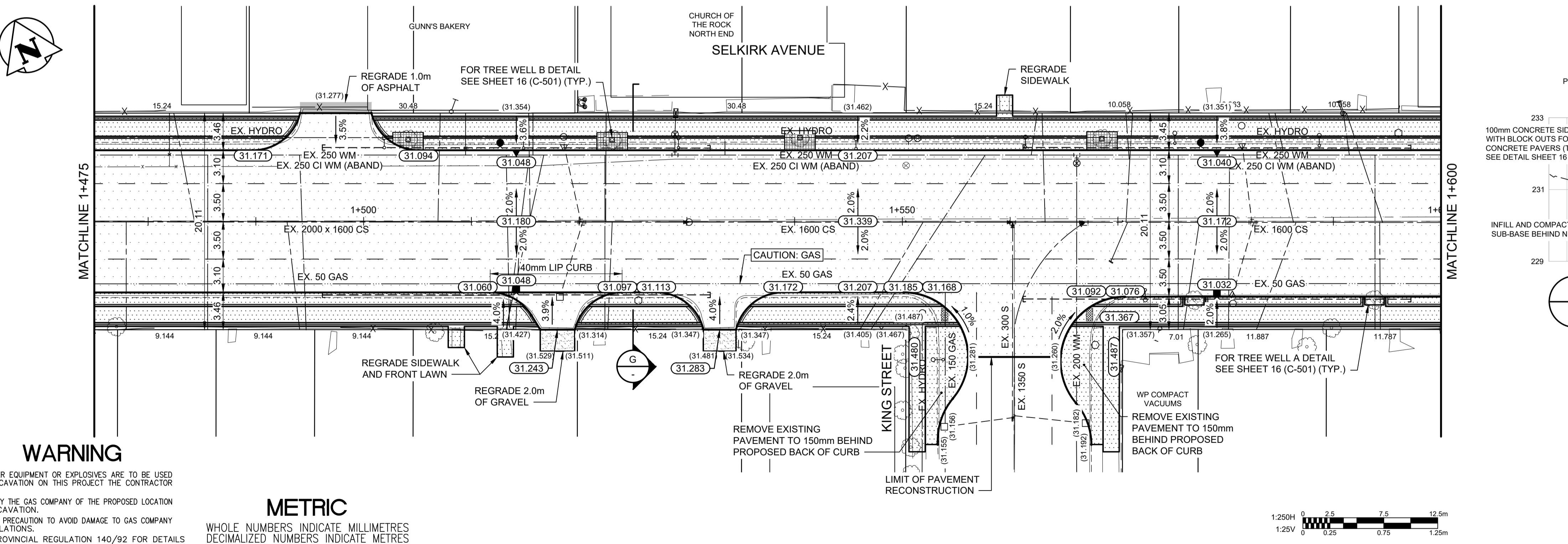
**WESTBOUND LANES**



**EASTBOUND LANES**



- NOTES:**
- ADJUST EXISTING MANHOLES AS REQUIRED.
  - ADJUST ALL AFFECTED EXISTING WATERMAIN AND WATER SERVICE VALVES TO GRADE.
  - FOR CATCHBASIN LEADS AND UNDERGROUND INFORMATION SHEETS SEE DWG U-101, U-102 AND U-103.
  - INSTALL 18.0m OF SUBDRAIN EACH SIDE OF LOW POINTS AND HIGH SIDE OF FLYBYS AS PER CITY OF WINNIPEG SPEC. SD-24 c/s CAPPED ENDS.
  - PRIVATE APPROACHES ARE 200mm REINFORCED CONCRETE WITH 100mm BASE COURSE, 225mm-50mm SUB-BASE AND NON-WOVEN GEOTEXTILE.
  - BULLNOSES, APPROACHES AND INTERSECTION RADII ARE TO BE INTEGRAL MODIFIED BARRIER CURB.
  - REMOVE AND SALVAGE ALL EXISTING BIKE RACKS AND RETURN TO SELKIRK AVENUE BIZ. LOCATION TO BE PROVIDED. INSTALL NEW BIKE RACKS AT LOCATIONS TO BE PROVIDED BY CONTRACT ADMINISTRATOR.
  - REMOVE AND REINSTALL ALL EXISTING GAS METER BOLLARDS.
  - ADJUST MANITOBA HYDRO MANHOLE FRAME AND COVER AT KING STREET AS REQUIRED.



**WARNING**

IF POWER EQUIPMENT OR EXPLOSIVES ARE TO BE USED FOR EXCAVATION ON THIS PROJECT THE CONTRACTOR MUST:  
 1) NOTIFY THE GAS COMPANY OF THE PROPOSED LOCATION OF EXCAVATION.  
 2) TAKE PRECAUTION TO AVOID DAMAGE TO GAS COMPANY INSTALLATIONS.  
 SEE PROVINCIAL REGULATION 140/92 FOR DETAILS

**METRIC**

WHOLE NUMBERS INDICATE MILLIMETRES  
 DECIMALIZED NUMBERS INDICATE METRES

EXISTING	LEGEND-PLAN	PROPOSED	EXISTING	LEGEND-PLAN	PROPOSED	EXISTING	LEGEND-PROFILE	PROPOSED
150 WM	WATERMAIN	150 WM	HYDRO	HYDRO	HYDRO	---	---	---
300 LDS	LAND DRAINAGE SEWER	300 LDS	M.T.S.	M.T.S.	M.T.S.	---	---	---
250 WWS	WASTE WATER SEWER	250 WWS	CONCRETE	CONCRETE	CONCRETE	---	---	---
○	MANHOLE	●	ASPHALT	ASPHALT	ASPHALT	---	---	---
□	CATCH BASIN	■	ASPHALT MILL & FILL	ASPHALT MILL & FILL	ASPHALT MILL & FILL	---	---	---
▽	CURB INLET/CATCH PIT	▽	STREET LIGHT	STREET LIGHT	STREET LIGHT	---	---	---
(T)	TRANSIT STOP	(T)	HYDRO POLE	HYDRO POLE	HYDRO POLE	---	---	---
---	GAS	---	SURVEY BAR	SURVEY BAR	SURVEY BAR	---	---	---
---	PROPERTY LINE	---	ELEVATION	ELEVATION	ELEVATION	---	---	---
---	LEGEND-PLAN	---	SIDEWALK RAMP	SIDEWALK RAMP	SIDEWALK RAMP	---	---	---

**LOCATION APPROVED UNDERGROUND STRUCTURES**

SUPV. U/G STRUCTURES COMMITTEE	DATE

**NOTE:**  
 LOCATION OF UNDERGROUND STRUCTURES AS SHOWN ARE BASED ON THE BEST INFORMATION AVAILABLE BUT NO GUARANTEE IS GIVEN THAT ALL EXISTING UTILITIES ARE SHOWN OR THAT THE GIVEN LOCATIONS ARE EXACT. CONFIRMATION OF EXISTENCE AND EXACT LOCATION OF ALL SERVICES MUST BE OBTAINED FROM THE INDIVIDUAL UTILITIES BEFORE PROCEEDING WITH CONSTRUCTION.

NO.	REVISIONS	YY/MM/DD	BY	DATE
0	ISSUED FOR TENDER	23.03.10	K.W.R.	

**Stantec**  
 500 - 311 Portage Avenue, Winnipeg M8 Canada R3B 2B9  
 Tel. 204.489.5900 Fax. 204.453.9012 www.stantec.com

DESIGNED BY: K.W.R. CHECKED BY: J.D.  
 DRAWN BY: A.M. APPROVED BY: K.W.R.

HOR. SCALE: 1:250  
 VERTICAL:  

RELEASED FOR CONSTRUCTION:  

DATE: 2023.03.10

**ENGINEERS GEOSCIENTISTS MANITOBA**  
 Certificate of Authorization  
 Stantec Consulting Ltd.  
 No. 1301

**THE CITY OF WINNIPEG**  
 PUBLIC WORKS DEPARTMENT  
 ENGINEERING DIVISION

2023 REGIONAL STREET RENEWAL PROGRAM  
 SELKIRK AVENUE PAVEMENT RENEWALS

SELKIRK AVENUE  
 STA 1+475 TO STA 1+600  
 PLAN / PROFILE ROADWORKS

SHEET 13 OF 17  
 CAD FILE DRAWING NUMBER: 08603c-201\_12.dwg  
 CITY DRAWING NUMBER: P-3563-39

V:\1171\csh\1171\08603\_0300\_drawing\0302\_sheel\_files\02\_civil\Vendor\_2\_Selkirk\_08603c-201\_12.dwg  
 2023.03.09 1:55 PM B:\Address\_Arty