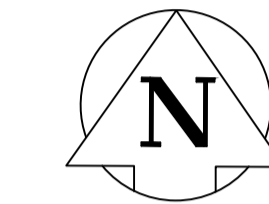
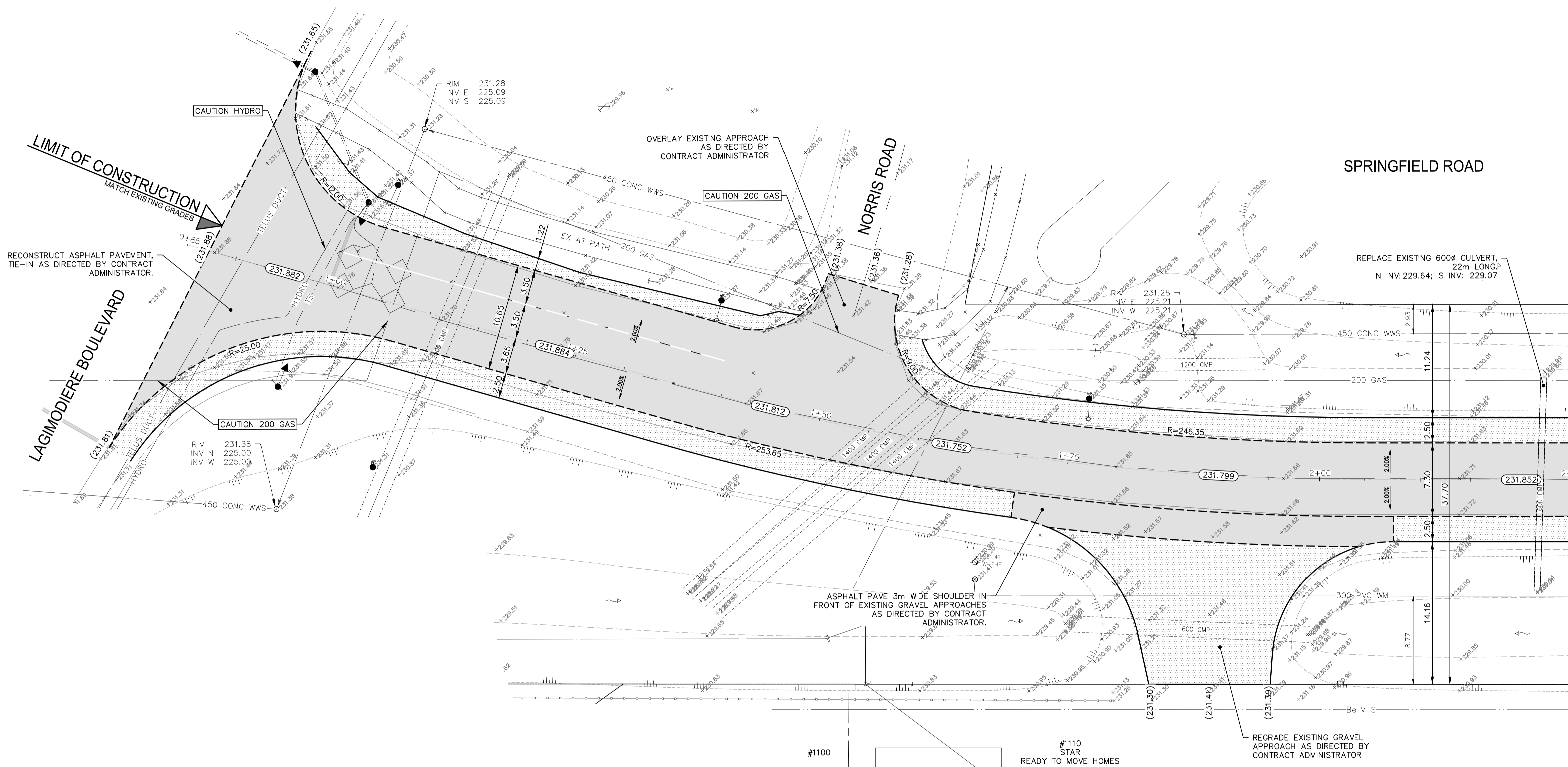


Apr 11, 2023 - 12:35pm F:\2022\221-07905-00 - 2023 Local Street Renewal 23-R1-02\4.0 Tech + Prof Services\14.11.06_Dwg\03_Work\221-07905-00_Springfield Rd_Plan&Profile.dwg - (tab: 221-07905-00-17-R0



MATCHLINE 2+25
FOR CONTINUATION SEE
DWG 221-07905-00-18

NOTES:

1. ALL WORK AND MATERIALS TO BE IN ACCORDANCE WITH THE LATEST REVISION OF THE CITY OF WINNIPEG STANDARD CONSTRUCTION SPECIFICATIONS.
2. CONTRACTOR TO CONFIRM THE LOCATION OF ALL UTILITIES/SERVICES IN THE FIELD PRIOR TO CONSTRUCTION.
3. ALL ROADWAY DIMENSIONS SHOWN ARE TO BACK OF CURB.
4. CONTRACTORS TO TAKE PRECAUTIONARY STEPS TO PROTECT EXISTING TREES WITHIN THE LIMITS OF CONSTRUCTION FROM DAMAGE FROM CONSTRUCTION ACTIVITIES AS OUTLINED IN THE SPECIFICATIONS.
5. LAMP STANDARDS, HYDRO POLES, AND ANCHORS THAT REQUIRE TEMPORARY SUPPORT, REMOVAL OR REPLACEMENT, TO BE DONE SO AT THE EXPENSE OF THE CONTRACTOR AS NECESSARY.
6. ADJUST ALL WATER VALVES, HYDRANTS, MANHOLES, AND CATCH BASINS IN WORK AREA TO GRADE.
7. ASPHALT PULVERIZATION TO BE DONE ON THE MAINLINE ROADWAY ONLY.
8. REMOVAL OF EXISTING ASPHALT FOR TIE-INS TO BE DONE AS REQUIRED AND DIRECTED BY CONTRACT ADMINISTRATOR.
9. RECONSTRUCTION OF SECTIONS OF THE ROADWAY TO BE DONE AS REQUIRED AND DIRECTED BY CONTRACT ADMINISTRATOR. CONSTRUCT 100mm OF GRANULAR A BASE, 40mm-50mm GRANULAR A SUB-BASE, CLASS A GEOGRID, AND SEPARATION/FILTRATION GEOTEXTILE FABRIC.
10. REGRADE DITCH AS DIRECTED BY CONTRACT ADMINISTRATOR.

EXISTING	LEGEND-PLAN	PROPOSED	EXISTING	LEGEND-PLAN	PROPOSED	EXISTING	LEGEND-PROFILE	PROPOSED
---	WATER MAIN	---	⊕	IRON BAR	---	---		
---	LAND DRAINAGE SEWER	---	⊕	HYDRO POLE & LIGHT STANDARD	---	---		
---	WASTE WATER SEWER	---	⊕	LIGHT STANDARD OR TRAFFIC SIGNAL	---	---		
---	HYDRO	---	HP	HYDRO POLE	---	---		
---	BelIMTS/SHAW/TELUS	---	⊕	CURB RAMP	---	---		
---	GAS	---	⊕	DETECTABLE WARNING SURFACE TILE	---	---		
---	SIGNALS	---	---	EDGE OF SIDEWALK	---	---		
○	MANHOLE	●	---	FENCE	---	---		
□	CATCH BASIN	■	---	PROPERTY LINE	---	---		
△	CURB INLET	▽	---	EDGE OF ASPHALT	---	---		
⊔	UTILITIES ADJUSTED	△ □ ○	---	EDGE OF CONCRETE	---	---		
⊔	PLUG	⊔	---	MODIFIED BARRIER CURB	---	---		
⊕	HYDRANT	⊕	---	BARRIER CURB	---	---		
⊕	VALVE	⊕	---	BARRIER CURB AND GUTTER	---	---		
⊕	CURB STOP	⊕	---	CONC SIDEWALK	---	---		
230.99	GROUND GRADE	(231.000)	---	CONCRETE SLAB	---	---		
(231.00)	PAVEMENT GRADE	(231.000)	---	ASPHALT	---	---		
---	ANCHOR	---	---	MILLED SURFACE	---	---		
#111	CIVIC ADDRESS	---	---	PAVEMENT REPAIR FABRIC	---	---		

LOCATIONS APPROVED UNDERGROUND STRUCTURES

SIGNED BY: _____ DATE: _____
SUVP UG STRUCTURES

LOCATION OF UNDERGROUND STRUCTURES AS SHOWN ARE BASED ON THE BEST INFORMATION AVAILABLE BUT NO GUARANTEE IS GIVEN THAT ALL EXISTING UTILITIES ARE SHOWN OR THAT THE GIVEN LOCATIONS ARE EXACT CONFIRMATION OF EXISTANCE AND EXACT LOCATION OF ALL SERVICES MUST BE OBTAINED FROM THE INDIVIDUAL UTILITIES BEFORE PROCEEDING

NO.	REVISIONS	DATE	BY
7			
6			
5			
4			
3			
2			
1			
0	ISSUED FOR TENDER	2023/04/11	K.G.

wsp

DESIGNED BY: **KG** CHECKED BY: **SS**
 DRAWN BY: **KC** APPROVED BY: **VM**

HOR. SCALE: **1:250**
 VERTICAL: **N/A**

RELEASED FOR CONSTRUCTION: _____
 DATE: **SEPTEMBER 2022** DATE: _____

WSP Canada Inc.
 1600 Buffalo Place
 Winnipeg, MB R3T 6B8
 t. 204.477.6650
 f. 204.474.2864
 www.wsp.com

ENGINEERS SEAL

CONSULTANT ACAD DWG. NO.
221-07905-00-17

FOR TENDER PURPOSES ONLY
NOT FOR CONSTRUCTION

METRIC
 WHOLE NUMBERS INDICATE MILLIMETRES
 DECIMALIZED NUMBERS INDICATE METRES

ENGINEERS GEOSCIENTISTS MANITOBA
 Certificate of Authorization
 WSP Canada Inc.
 No. 5750

THE CITY OF WINNIPEG
 PUBLIC WORKS DEPARTMENT
 ENGINEERING SERVICES DIVISION

2023 INDUSTRIAL STREET RENEWALS
 SPRINGFIELD ROAD

AC REHABILITATION
 STA. 0+87.80 TO STA. 2+25

CITY DRAWING NUMBER
 SHEET **01** OF **10**

TENDER NO.
182-2023