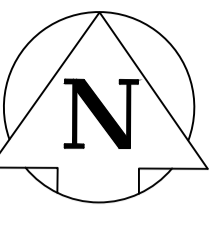


Apr 11, 2023 - 12:41pm - 2023 Local Street Renewal 23-R1-02\4.0 Tech + Prof Services\14.11.06_Dwg\03_Work\221-07905-00_Springfield Rd_Plan&Profile.dwg - tab: 221-07905-00-19-RO

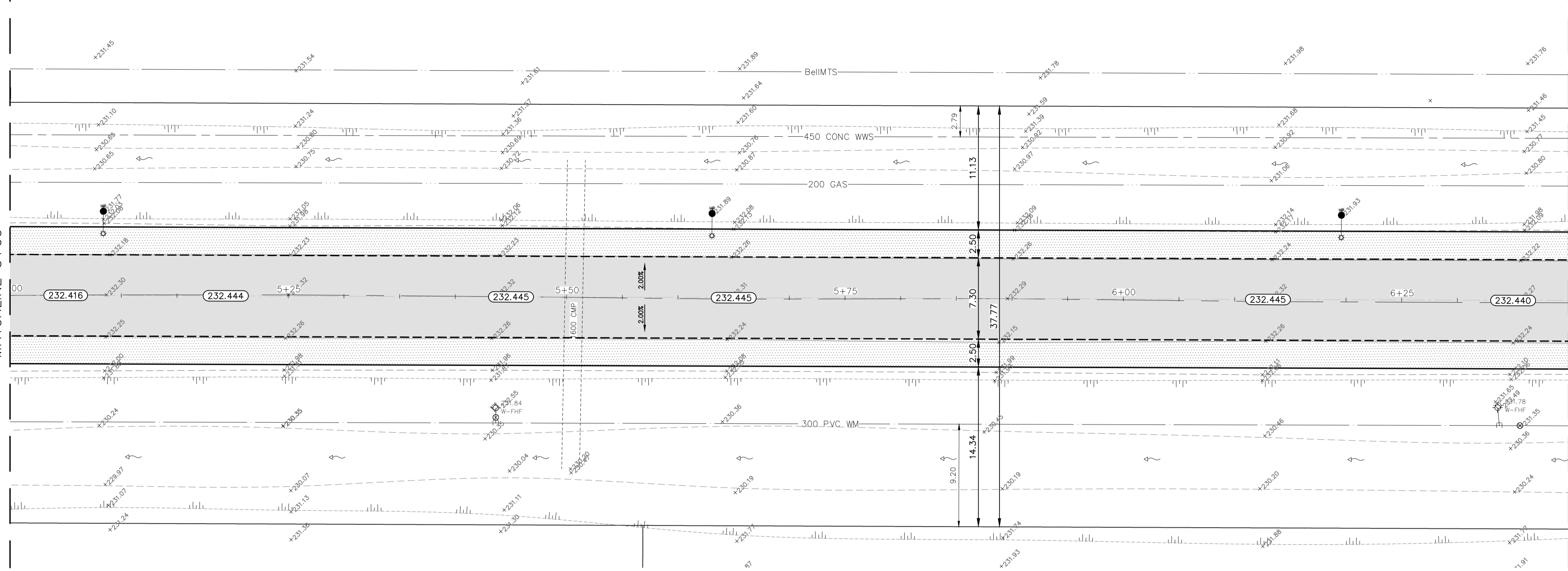
SPRINGFIELD ROAD



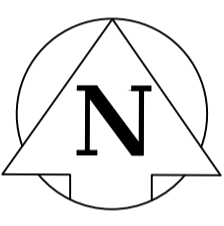
FOR CONTINUATION SEE
DWG 221-07905-00-18

MATCHLINE 5+00

MATCHLINE 6+40

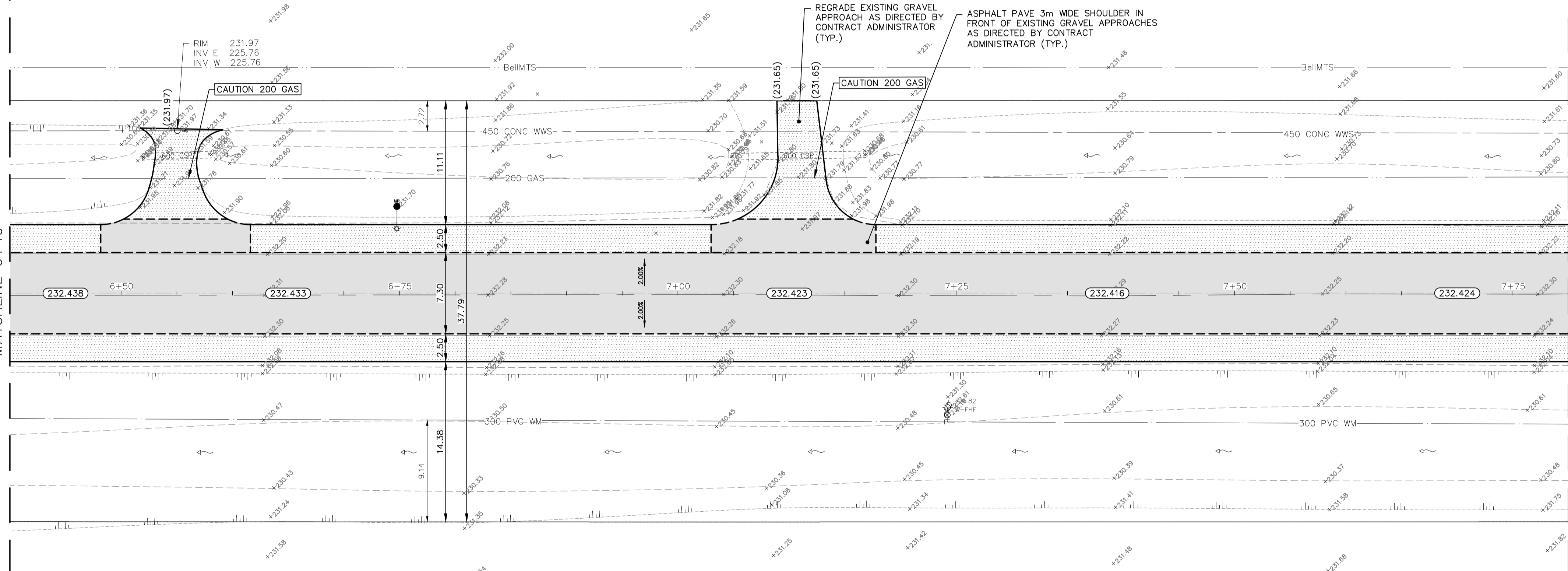


SPRINGFIELD ROAD



MATCHLINE 6+40

MATCHLINE 7+80



REGRADE EXISTING GRAVEL APPROACH AS DIRECTED BY CONTRACT ADMINISTRATOR (TYP.)
ASPHALT PAVE 3m WIDE SHOULDER IN FRONT OF EXISTING GRAVEL APPROACHES AS DIRECTED BY CONTRACT ADMINISTRATOR (TYP.)

RIM 231.97
INV E 225.76
INV W 225.76

CAUTION 200 GAS

CAUTION 200 GAS

NOTES:

1. ALL WORK AND MATERIALS TO BE IN ACCORDANCE WITH THE LATEST REVISION OF THE CITY OF WINNIPEG STANDARD CONSTRUCTION SPECIFICATIONS.
2. CONTRACTOR TO CONFIRM THE LOCATION OF ALL UTILITIES/SERVICES IN THE FIELD PRIOR TO CONSTRUCTION.
3. ALL ROADWAY DIMENSIONS SHOWN ARE TO BACK OF CURB.
4. CONTRACTORS TO TAKE PRECAUTIONARY STEPS TO PROTECT EXISTING TREES WITHIN THE LIMITS OF CONSTRUCTION FROM DAMAGE FROM CONSTRUCTION ACTIVITIES AS OUTLINED IN THE SPECIFICATIONS.
5. LAMP STANDARDS, HYDRO POLES, AND ANCHORS THAT REQUIRE TEMPORARY SUPPORT, REMOVAL OR REPLACEMENT, TO BE DONE SO AT THE EXPENSE OF THE CONTRACTOR AS NECESSARY.
6. ADJUST ALL WATER VALVES, HYDRANTS, MANHOLES, AND CATCH BASINS IN WORK AREA TO GRADE.
7. ASPHALT PULVERIZATION TO BE DONE ON THE MAINLINE ROADWAY ONLY.
8. REMOVAL OF EXISTING ASPHALT FOR TIE-INS TO BE DONE AS REQUIRED AND DIRECTED BY CONTRACT ADMINISTRATOR.
9. RECONSTRUCTION OF SECTIONS OF THE ROADWAY TO BE DONE AS REQUIRED AND DIRECTED BY CONTRACT ADMINISTRATOR. CONSTRUCT 100mm OF GRANULAR A BASE, 400mm-50mm GRANULAR A SUB-BASE, CLASS A GEOGRID, AND SEPARATION/FILTRATION GEOTEXTILE FABRIC.
10. REGRADE DITCH AS DIRECTED BY CONTRACT ADMINISTRATOR.

LOCATIONS APPROVED UNDERGROUND STRUCTURES

| NO. | ISSUED FOR TENDER | DATE | BY |
|-----|-------------------|------|----|
| 7 | | | |
| 6 | | | |
| 5 | | | |
| 4 | | | |
| 3 | | | |
| 2 | | | |
| 1 | | | |

DESIGNED BY: KG
CHECKED BY: SS
DRAWN BY: KC
APPROVED BY: VM

HOR. SCALE: 1:250
VERTICAL: N/A

NO. REVISIONS: 0
DATE: SEPTEMBER 2022

WSP Canada Inc.
1600 Buffalo Place
Winnipeg, MB R3T 6B8
t. 204.477.6650
f. 204.474.2864
www.wsp.com

ENGINEER'S SEAL
S.C. MINY
REGISTERED PROFESSIONAL ENGINEER
2023-04-11

CONSULTANT ACAD DWG. NO.
221-07905-00-19

FOR TENDER PURPOSES ONLY
NOT FOR CONSTRUCTION

METRIC
WHOLE NUMBERS INDICATE MILLIMETRES
DECIMALIZED NUMBERS INDICATE METRES

**ENGINEERS
GEOSCIENTISTS
MANITOBA**
Certificate of Authorization
WSP Canada Inc.
No. 5750

THE CITY OF WINNIPEG
PUBLIC WORKS DEPARTMENT
ENGINEERING SERVICES DIVISION

2023 INDUSTRIAL STREET RENEWALS
SPRINGFIELD ROAD
AC REHABILITATION
STA. 5+00 TO STA. 7+80

CITY DRAWING NUMBER
SHEET 03 OF 10
TENDER NO.
182-2023

| EXISTING | LEGEND-PLAN | PROPOSED | EXISTING | LEGEND-PLAN | PROPOSED | EXISTING | LEGEND-PROFILE | PROPOSED |
|----------|---------------------|----------|----------|----------------------------------|----------|----------|----------------|----------|
| | WATER MAIN | | | IRON BAR | | | | |
| | LAND DRAINAGE SEWER | | | HYDRO POLE & LIGHT STANDARD | | | | |
| | WASTE WATER SEWER | | | LIGHT STANDARD OR TRAFFIC SIGNAL | | | | |
| | HYDRO | | | HYDRO POLE | | | | |
| | BellMITS/SHAW/TELUS | | | CURB RAMP | | | | |
| | GAS | | | DETECTABLE WARNING SURFACE TILE | | | | |
| | SIGNALS | | | EDGE OF SIDEWALK | | | | |
| | MANHOLE | | | FENCE | | | | |
| | CATCH BASIN | | | PROPERTY LINE | | | | |
| | CURB INLET | | | EDGE OF ASPHALT | | | | |
| | UTILITIES ADJUSTED | | | EDGE OF CONCRETE | | | | |
| | PLUG | | | MODIFIED BARRIER CURB | | | | |
| | HYDRANT | | | BARRIER CURB | | | | |
| | VALVE | | | BARRIER CURB AND GUTTER | | | | |
| | CURB STOP | | | CONC SIDEWALK | | | | |
| | GROUND GRADE | | | CONCRETE SLAB | | | | |
| | PAVEMENT GRADE | | | ASPHALT | | | | |
| | ANCHOR | | | MILLED SURFACE | | | | |
| | CIVIC ADDRESS | | | PAVEMENT REPAIR FABRIC | | | | |
| | LEGEND-PLAN | | | LEGEND-PLAN | | | | |
| | | | | LEGEND-PROFILE | | | | |