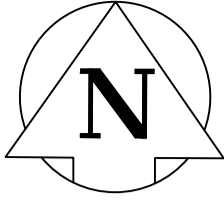


Apr 11, 2023 - 12:45pm
 F:\2022\221-07905-00 - 2023 Local Street Renewal\23-R1-02\4.0 Tech + Prof Services\14.11.06_Dwg_03_Work_Dwg\221-07905-00_Springfield_Rd_Plan&Profile.dwg - (tab:221-07905-00-20-R0)

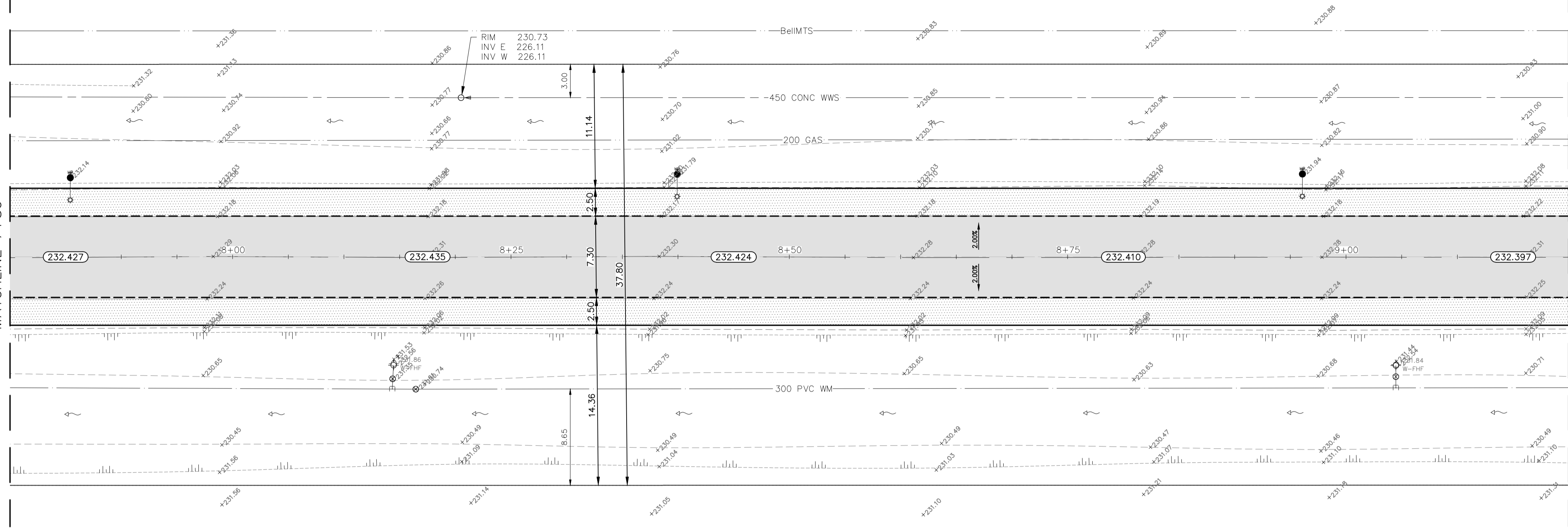
SPRINGFIELD ROAD



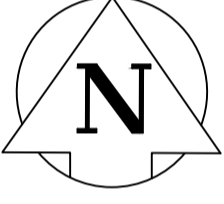
FOR CONTINUATION SEE
 DWG 221-07905-00-19

MATCHLINE 7+80

MATCHLINE 9+20

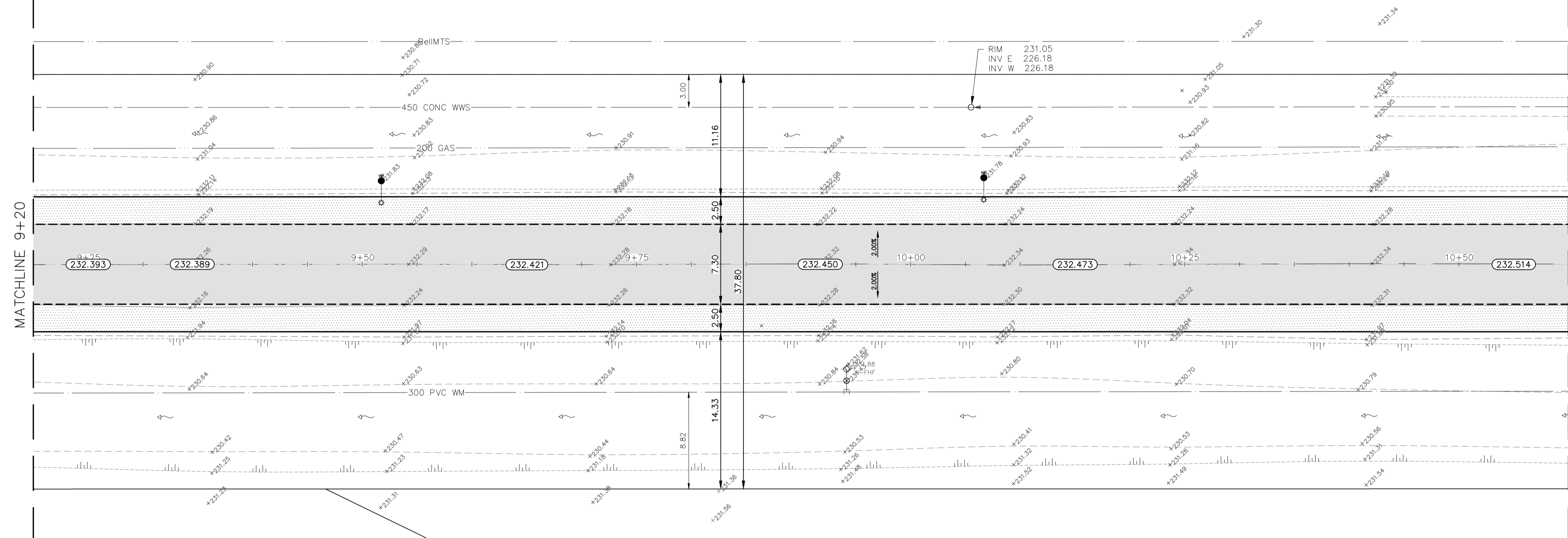


SPRINGFIELD ROAD



FOR CONTINUATION SEE
 DWG 221-07905-00-21

MATCHLINE 10+60



- NOTES:**
1. ALL WORK AND MATERIALS TO BE IN ACCORDANCE WITH THE LATEST REVISION OF THE CITY OF WINNIPEG STANDARD CONSTRUCTION SPECIFICATIONS.
 2. CONTRACTOR TO CONFIRM THE LOCATION OF ALL UTILITIES/SERVICES IN THE FIELD PRIOR TO CONSTRUCTION.
 3. ALL ROADWAY DIMENSIONS SHOWN ARE TO BACK OF CURB.
 4. CONTRACTORS TO TAKE PRECAUTIONARY STEPS TO PROTECT EXISTING TREES WITHIN THE LIMITS OF CONSTRUCTION FROM DAMAGE FROM CONSTRUCTION ACTIVITIES AS OUTLINED IN THE SPECIFICATIONS.
 5. LAMP STANDARDS, HYDRO POLES, AND ANCHORS THAT REQUIRE TEMPORARY SUPPORT, REMOVAL OR REPLACEMENT, TO BE DONE SO AT THE EXPENSE OF THE CONTRACTOR AS NECESSARY.
 6. ADJUST ALL WATER VALVES, HYDRANTS, MANHOLES, AND CATCH BASINS IN WORK AREA TO GRADE.
 7. ASPHALT PULVERIZATION TO BE DONE ON THE MAINLINE ROADWAY ONLY.
 8. REMOVAL OF EXISTING ASPHALT FOR TIE-INS TO BE DONE AS REQUIRED AND DIRECTED BY CONTRACT ADMINISTRATOR.
 9. RECONSTRUCTION OF SECTIONS OF THE ROADWAY TO BE DONE AS REQUIRED AND DIRECTED BY CONTRACT ADMINISTRATOR. CONSTRUCT 100mm OF GRANULAR A BASE, 400mm-50mm GRANULAR A SUB-BASE, CLASS A GEOGRID, AND SEPARATION/FILTRATION GEOTEXTILE FABRIC.
 10. REGRADE DITCH AS DIRECTED BY CONTRACT ADMINISTRATOR.

LOCATIONS APPROVED UNDERGROUND STRUCTURES

SIGNED BY:	DATE
SUPV UG STRUCTURES	

G.A.M. ELEV.	
7	
6	
5	
4	
3	
2	
1	
0	

WSP Canada Inc.
 1600 Buffalo Place
 Winnipeg, MB R3T 6B8
 t. 204.477.6650
 f. 204.474.2864
 www.wsp.com

DESIGNED BY: KG	CHECKED BY: SS
DRAWN BY: KC	APPROVED BY: VM
HOR. SCALE: 1:250	RELEASED FOR CONSTRUCTION
VERTICAL: N/A	
NO. REVISIONS	DATE BY
	DATE SEPTEMBER 2022

ENGINEER'S SEAL

2023-04-11

CONSULTANT ACAD DWG. NO.
221-07905-00-20

FOR TENDER PURPOSES ONLY
NOT FOR CONSTRUCTION

METRIC

WHOLE NUMBERS INDICATE MILLIMETRES
DECIMALIZED NUMBERS INDICATE METRES

**ENGINEERS
GEOSCIENTISTS
MANITOBA**
 Certificate of Authorization
 WSP Canada Inc.
 No. 5750

THE CITY OF WINNIPEG
 PUBLIC WORKS DEPARTMENT
 ENGINEERING SERVICES DIVISION

CITY DRAWING NUMBER
 SHEET **04** OF **10**
 TENDER NO.
182-2023

2023 INDUSTRIAL STREET RENEWALS

SPRINGFIELD ROAD

AC REHABILITATION
 STA. 7+80 TO STA. 10+60

EXISTING		PROPOSED		EXISTING		PROPOSED	
	WATER MAIN		IRON BAR		HYDRO POLE & LIGHT STANDARD		LIGHT STANDARD OR TRAFFIC SIGNAL
	LAND DRAINAGE SEWER		HYDRO POLE		CURB RAMP		DETECTABLE WARNING SURFACE TILE
	WASTE WATER SEWER		CURB RAMP		EDGE OF SIDEWALK		FENCE
	HYDRO		PROPERTY LINE		EDGE OF ASPHALT		EDGE OF CONCRETE
	BelIMTS/SHAW/TELUS		MODIFIED BARRIER CURB		BARRIER CURB		BARRIER CURB AND GUTTER
	GAS		CONC SIDEWALK		CONC SIDEWALK		NORTH OR WEST SIDEWALK
	SIGNALS		CONCRETE SLAB		ASPHALT		ROADWAY CENTRELINE
	MANHOLE		MILLED SURFACE		NORTH OR WEST GUTTER		SOUTH OR EAST GUTTER
	CATCH BASIN		MILLED SURFACE		SOUTH OR EAST GUTTER		
	CURB INLET		ANCHOR				
	UTILITIES ADJUSTED		CIVIC ADDRESS				
	PLUG		LEGEND-PLAN				
	HYDRANT		PROPOSED				
	VALVE						
	CURB STOP						
	GROUND GRADE						
	PAVEMENT GRADE						
	ANCHOR						
	CIVIC ADDRESS						
	EXISTING		PROPOSED		EXISTING		PROPOSED